

The Normandy Apartments

APPENDIX F

EPA ENVIRONMENTAL JUSTICE SCREENING TOOL & AMERICAN COMMUNITY SURVEY (ACS) REPORT

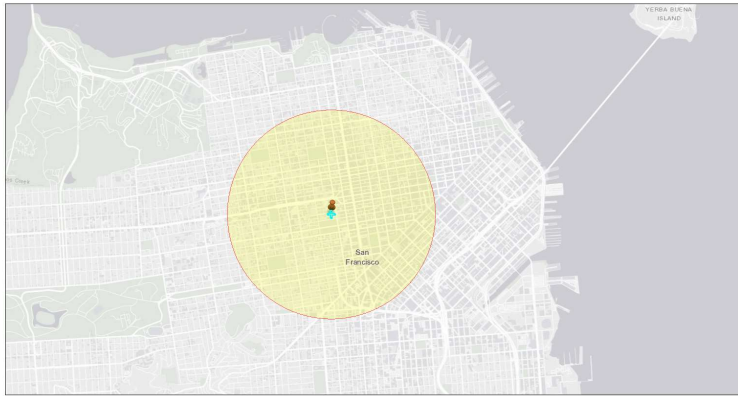
EJScreen provides environmental and socioeconomic information for user-defined areas, in this case, 1 mile radius ring around the project location, and combines that data into environmental justice and supplemental indexes. Attached is also the American Community Survey (ACS) report, with more defined information as to the area surrounding the project location.

EJScreen Community Report

This report provides environmental and socioeconomic information for user-defined areas, and combines that data into environmental justice and supplemental indexes.

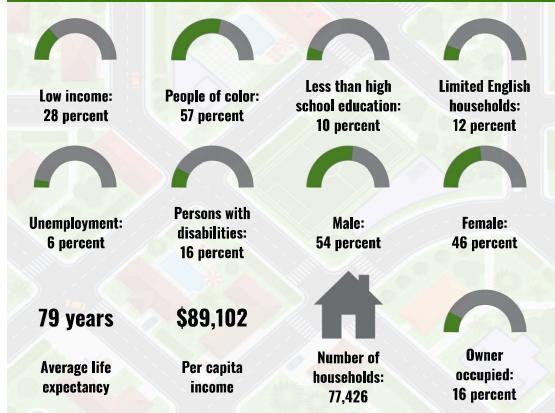
The Normandy Apartments - 1155

1 mile Ring Centered at 37.783044,-122.425095
 Population: 141,704
 Area in square miles: 3.14

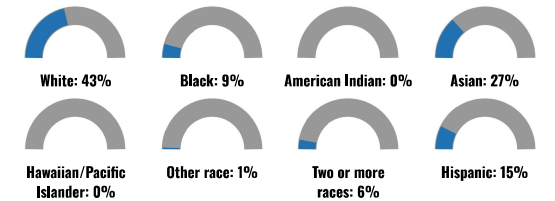


December 16, 2024
 The Normandy Apartments - 1155 Ellis St
 Search Result (point)
 Bureau of Land Management, Esri, HERE, Garmin, GeoTechnology Co., USDA, EPA, Esri, HERE

COMMUNITY INFORMATION



BREAKDOWN BY RACE



BREAKDOWN BY AGE



LIMITED ENGLISH SPEAKING BREAKDOWN



Notes: Numbers may not sum to totals due to rounding. Hispanic population can be of any race. Source: U.S. Census Bureau, American Community Survey (ACS) 2018-2022. Life expectancy data comes from the Centers for Disease Control.

LANGUAGES SPOKEN AT HOME

LANGUAGE	PERCENT
English	62%
Spanish	10%
French, Haitian, or Cajun	1%
Russian, Polish, or Other Slavic	2%
Other Indo-European	4%
Korean	2%
Chinese (including Mandarin, Cantonese)	9%
Vietnamese	2%
Tagalog (including Filipino)	3%
Other Asian and Pacific Island	3%
Arabic	1%
Other and Unspecified	1%
Total Non-English	38%

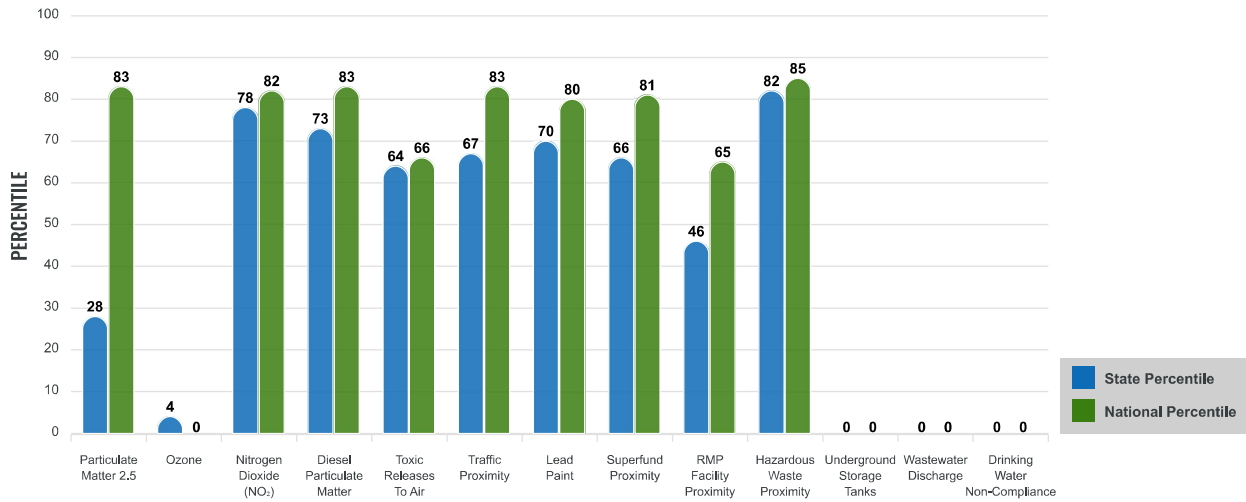
Environmental Justice & Supplemental Indexes

The environmental justice and supplemental indexes are a combination of environmental and socioeconomic information. There are thirteen EJ indexes and supplemental indexes in EJScreen reflecting the 13 environmental indicators. The indexes for a selected area are compared to those for all other locations in the state or nation. For more information and calculation details on the EJ and supplemental indexes, please visit the [EJScreen website](#).

EJ INDEXES

The EJ indexes help users screen for potential EJ concerns. To do this, the EJ index combines data on low income and people of color populations with a single environmental indicator.

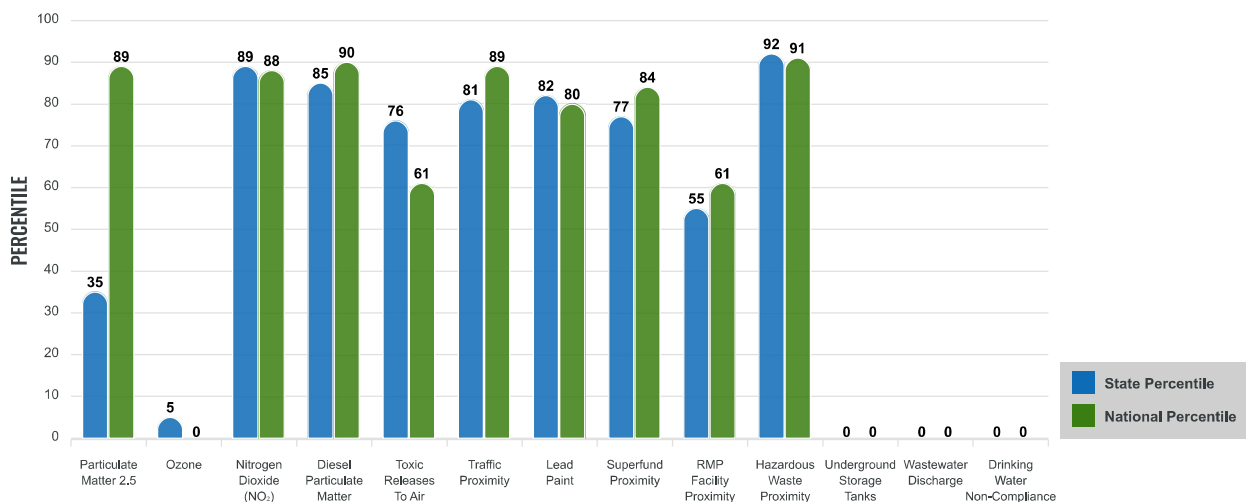
EJ INDEXES FOR THE SELECTED LOCATION



SUPPLEMENTAL INDEXES

The supplemental indexes offer a different perspective on community-level vulnerability. They combine data on percent low income, percent persons with disabilities, percent less than high school education, percent limited English speaking, and percent low life expectancy with a single environmental indicator.

SUPPLEMENTAL INDEXES FOR THE SELECTED LOCATION



Report for 1 mile Ring Centered at 37.783044,-122.425095

Report produced December 16, 2024 using EJScreen Version 2.3

EJScreen Environmental and Socioeconomic Indicators Data

SELECTED VARIABLES	VALUE	STATE AVERAGE	PERCENTILE IN STATE	USA AVERAGE	PERCENTILE IN USA
ENVIRONMENTAL BURDEN INDICATORS					
Particulate Matter 2.5 ($\mu\text{g}/\text{m}^3$)	10.3	12.3	21	8.45	88
Ozone (ppb)	45	74.2	2	61.8	0
Nitrogen Dioxide (NO_2) (ppbv)	13	9.1	96	7.8	93
Diesel Particulate Matter ($\mu\text{g}/\text{m}^3$)	0.442	0.286	81	0.191	93
Toxic Releases to Air (toxicity-weighted concentration)	560	780	62	4,600	48
Traffic Proximity (daily traffic count/distance to road)	5,300,000	4,000,000	69	1,700,000	92
Lead Paint (% Pre-1960 Housing)	0.58	0.31	77	0.3	79
Superfund Proximity (site count/km distance)	0.27	0.68	65	0.39	75
RMP Facility Proximity (facility count/km distance)	0.26	0.83	41	0.57	49
Hazardous Waste Proximity (facility count/km distance)	36	11	99	3.5	99
Underground Storage Tanks (count/ km^2)	0	0.00036	0	3.6	0
Wastewater Discharge (toxicity-weighted concentration/m distance)	0	11000	0	700000	0
Drinking Water Non-Compliance (points)	0	0.5	0	2.2	0
SOCIOECONOMIC INDICATORS					
Demographic Index USA	1.56	N/A	N/A	1.34	65
Supplemental Demographic Index USA	1.82	N/A	N/A	1.64	66
Demographic Index State	1.75	1.83	49	N/A	N/A
Supplemental Demographic Index State	1.81	1.49	70	N/A	N/A
People of Color	57%	62%	42	40%	70
Low Income	28%	28%	57	30%	52
Unemployment Rate	6%	6%	59	6%	68
Limited English Speaking Households	12%	8%	74	5%	87
Less Than High School Education	10%	16%	48	11%	58
Under Age 5	3%	5%	35	5%	37
Over Age 64	16%	16%	57	18%	49

*Diesel particulate matter index is from the EPA's Air Toxics Data Update, which is the Agency's ongoing, comprehensive evaluation of air toxics in the United States. This effort aims to prioritize air toxics, emission sources, and locations of interest for further study. It is important to remember that the air toxics data presented here provide broad estimates of health risks over geographic areas of the country, not definitive risks to specific individuals or locations. More information on the Air Toxics Data Update can be found at: <https://www.epa.gov/haps/air-toxics-data-update>.

Sites reporting to EPA within defined area:

Superfund	0
Hazardous Waste, Treatment, Storage, and Disposal Facilities	19
Water Dischargers	4
Air Pollution	3
Brownfields	6
Toxic Release Inventory	2

Other community features within defined area:

Schools	14
Hospitals	19
Places of Worship	76

Other environmental data:

Air Non-attainment	Yes
Impaired Waters	No

Selected location contains American Indian Reservation Lands*	No
Selected location contains a "Justice40 (CEJST)" disadvantaged community	Yes
Selected location contains an EPA IRA disadvantaged community	Yes

Report for 1 mile Ring Centered at 37.783044,-122.425095

Report produced December 16, 2024 using EJScreen Version 2.3

EJScreen Environmental and Socioeconomic Indicators Data

HEALTH INDICATORS

INDICATOR	VALUE	STATE AVERAGE	STATE PERCENTILE	US AVERAGE	US PERCENTILE
Low Life Expectancy	18%	18%	57	20%	37
Heart Disease	4.3	4.8	42	5.8	22
Asthma	8.8	9.6	26	10.3	13
Cancer	5.1	5.6	45	6.4	22
Persons with Disabilities	15.8%	11.3%	85	13.7%	68

CLIMATE INDICATORS

INDICATOR	VALUE	STATE AVERAGE	STATE PERCENTILE	US AVERAGE	US PERCENTILE
Flood Risk	7%	13%	55	12%	54
Wildfire Risk	0%	30%	0	14%	0

CRITICAL SERVICE GAPS

INDICATOR	VALUE	STATE AVERAGE	STATE PERCENTILE	US AVERAGE	US PERCENTILE
Broadband Internet	12%	9%	73	13%	59
Lack of Health Insurance	5%	7%	40	9%	34
Housing Burden	Yes	N/A	N/A	N/A	N/A
Transportation Access Burden	Yes	N/A	N/A	N/A	N/A
Food Desert	No	N/A	N/A	N/A	N/A

Report for 1 mile Ring Centered at 37.783044,-122.425095

Report produced December 16, 2024 using EJScreen Version 2.3

Location: User-specified polygonal location
 Ring (buffer): 3000-foot radius
 Description: The Normandy - 1155 Ellis Street

Summary of ACS Estimates		2018 - 2022
Population		52,643
Population Density (per sq. mile)		46,420
People of Color Population		32,004
% People of Color Population		61%
Households		29,595
Housing Units		34,957
Housing Units Built Before 1950		15,857
Per Capita Income		76,868
Land Area (sq. miles) (Source: SF1)		1.13
% Land Area		100%
Water Area (sq. miles) (Source: SF1)		0.00
% Water Area		0%

	2018 - 2022 ACS Estimates	Percent	MOE (±)
Population by Race			
Total	52,643	100%	669
Population Reporting One Race	47,655	91%	2,581
White	22,509	43%	574
Black	6,115	12%	615
American Indian	474	1%	329
Asian	14,563	28%	423
Pacific Islander	164	0%	242
Some Other Race	3,829	7%	398
Population Reporting Two or More Races	4,988	9%	421
Total Hispanic Population	7,771	15%	505
Total Non-Hispanic Population	44,872		
White Alone	20,639	39%	575
Black Alone	6,025	11%	615
American Indian Alone	131	0%	83
Non-Hispanic Asian Alone	14,503	28%	422
Pacific Islander Alone	164	0%	242
Other Race Alone	528	1%	217
Two or More Races Alone	2,882	5%	415
Population by Sex			
Male	28,509	54%	554
Female	24,134	46%	414
Population by Age			
Age 0-4	1,500	3%	162
Age 0-17	4,194	8%	212
Age 18+	48,448	92%	485
Age 65+	10,538	20%	353

Data Note: Detail may not sum to totals due to rounding. Hispanic population can be of any race.

N/A means not available. **Source:** U.S. Census Bureau, American Community Survey (ACS) 2018 - 2022

Location: User-specified polygonal location
 Ring (buffer): 3000-foot radius
 Description: The Normandy - 1155 Ellis Street

	2018 - 2022 ACS Estimates	Percent	MOE (±)
Population 25+ by Educational Attainment			
Total	45,352	100%	597
Less than 9th Grade	2,254	5%	262
9th - 12th Grade, No Diploma	2,409	5%	179
High School Graduate	6,682	15%	358
Some College, No Degree	6,225	14%	310
Associate Degree	2,336	5%	343
Bachelor's Degree or more	25,446	56%	469
Population Age 5+ Years by Ability to Speak English			
Total	51,143	100%	630
Speak only English	29,490	58%	463
Non-English at Home ¹⁺²⁺³⁺⁴	21,653	42%	525
¹ Speak English "very well"	11,798	23%	452
² Speak English "well"	4,407	9%	280
³ Speak English "not well"	4,160	8%	382
⁴ Speak English "not at all"	1,289	3%	161
³⁺⁴ Speak English "less than well"	5,449	11%	386
²⁺³⁺⁴ Speak English "less than very well"	9,856	19%	393
Limited English Speaking Households*			
Total	4,640	100%	238
Speak Spanish	892	19%	137
Speak Other Indo-European Languages	820	18%	226
Speak Asian-Pacific Island Languages	2,722	59%	156
Speak Other Languages	206	4%	150
Households by Household Income			
Household Income Base	29,595	100%	426
< \$15,000	5,387	18%	336
\$15,000 - \$25,000	2,532	9%	252
\$25,000 - \$50,000	3,666	12%	214
\$50,000 - \$75,000	2,925	10%	180
\$75,000 +	15,085	51%	441
Occupied Housing Units by Tenure			
Total	29,595	100%	426
Owner Occupied	4,101	14%	211
Renter Occupied	25,493	86%	425
Employed Population Age 16+ Years			
Total	48,919	100%	613
In Labor Force	31,238	64%	575
Civilian Unemployed in Labor Force	2,080	7%	280
Not In Labor Force	17,682	36%	480

Data Note: Detail may not sum to totals due to rounding. Hispanic population can be of anyrace.

N/A means not available. **Source:** U.S. Census Bureau, American Community Survey (ACS)

*Households in which no one 14 and over speaks English "very well" or speaks English only.

Location: User-specified polygonal location
 Ring (buffer): 3000-foot radius
 Description: The Normandy - 1155 Ellis Street

	2018 - 2022 ACS Estimates	Percent	MOE (±)
Population by Language Spoken at Home*			
Total (persons age 5 and above)	53,649	100%	747
English	31,090	58%	581
Spanish	5,088	9%	383
French, Haitian, or Cajun	815	2%	180
German or other West Germanic	335	1%	75
Russian, Polish, or Other Slavic	1,929	4%	258
Other Indo-European	2,321	4%	271
Korean	1,315	2%	240
Chinese (including Mandarin, Cantonese)	4,326	8%	267
Vietnamese	1,875	3%	383
Tagalog (including Filipino)	1,005	2%	404
Other Asian and Pacific Island	1,569	3%	227
Arabic	908	2%	508
Other and Unspecified	1,073	2%	289
Total Non-English	22,559	42%	940

Data Note: Detail may not sum to totals due to rounding. Hispanic population can be of any race.
 N/A means not available. **Source:** U.S. Census Bureau, American Community Survey (ACS) 2018 - 2022.
 *Population by Language Spoken at Home is available at the census tract summary level and up.