

The Normandy Apartments

APPENDIX B

COMPLIANCE DOCUMENTATION

Appendix B contains the records required to document compliance or conformance determinations for each statute, executive order, or regulation in accordance with all laws and authorities under 24 CFR 58.5 and 58.6.

Proximity to Nearest Airports

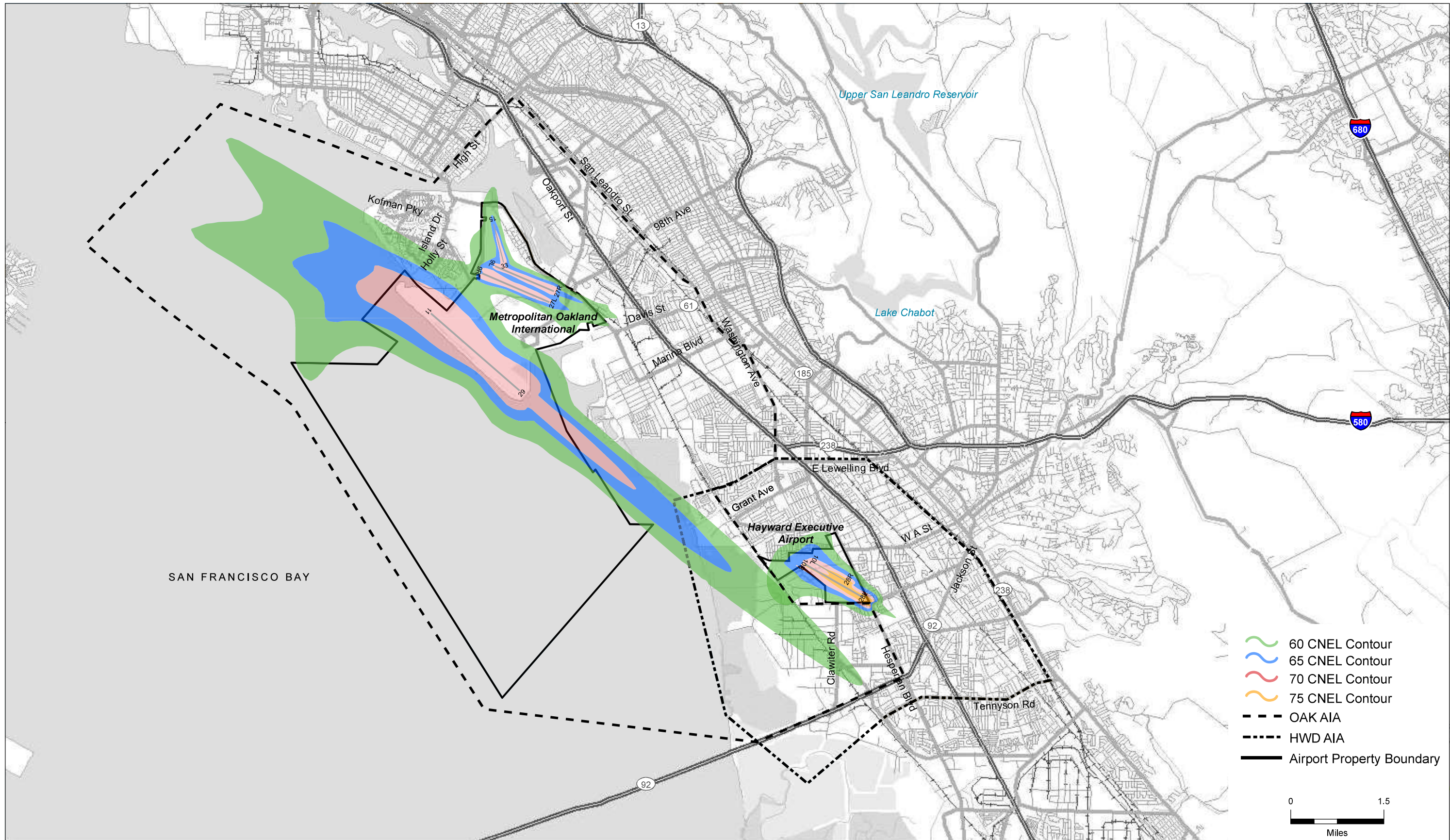
The project site sits over 59,000 ft from the nearest airport.

Legend

-  Distance in Feet: ~59,052
-  Distance in Feet: ~61,624
-  Oakland International Airport
-  San Francisco International Airport
-  The Normandy Apartments



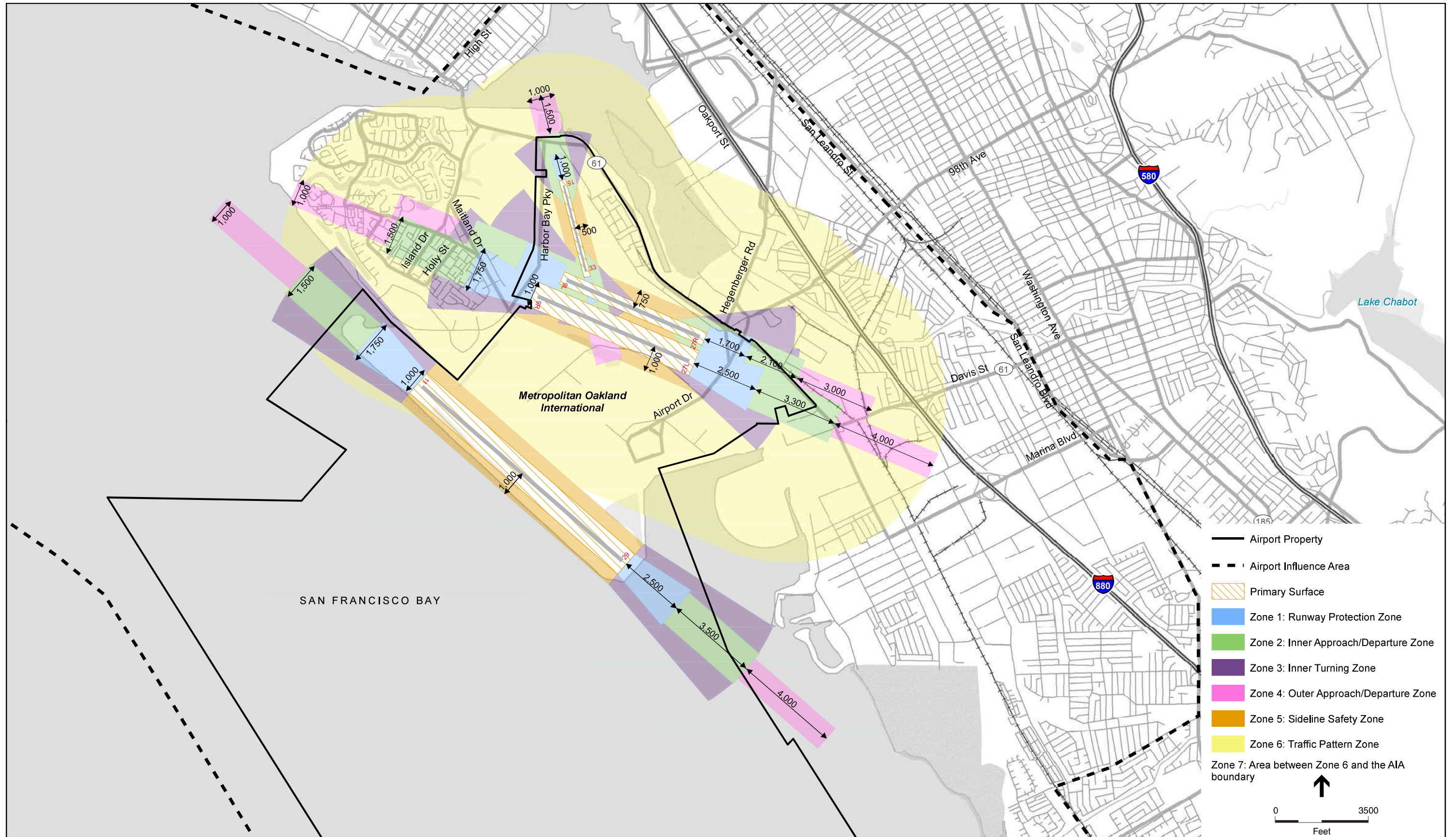
Figure 1-1



SOURCE: ESA Airports, ESRI, OAK Airport Master Plan, Caltrans California Airport Land Use Planning Handbook, 2002

Oakland International Airport Land Use Plan Update - 202229

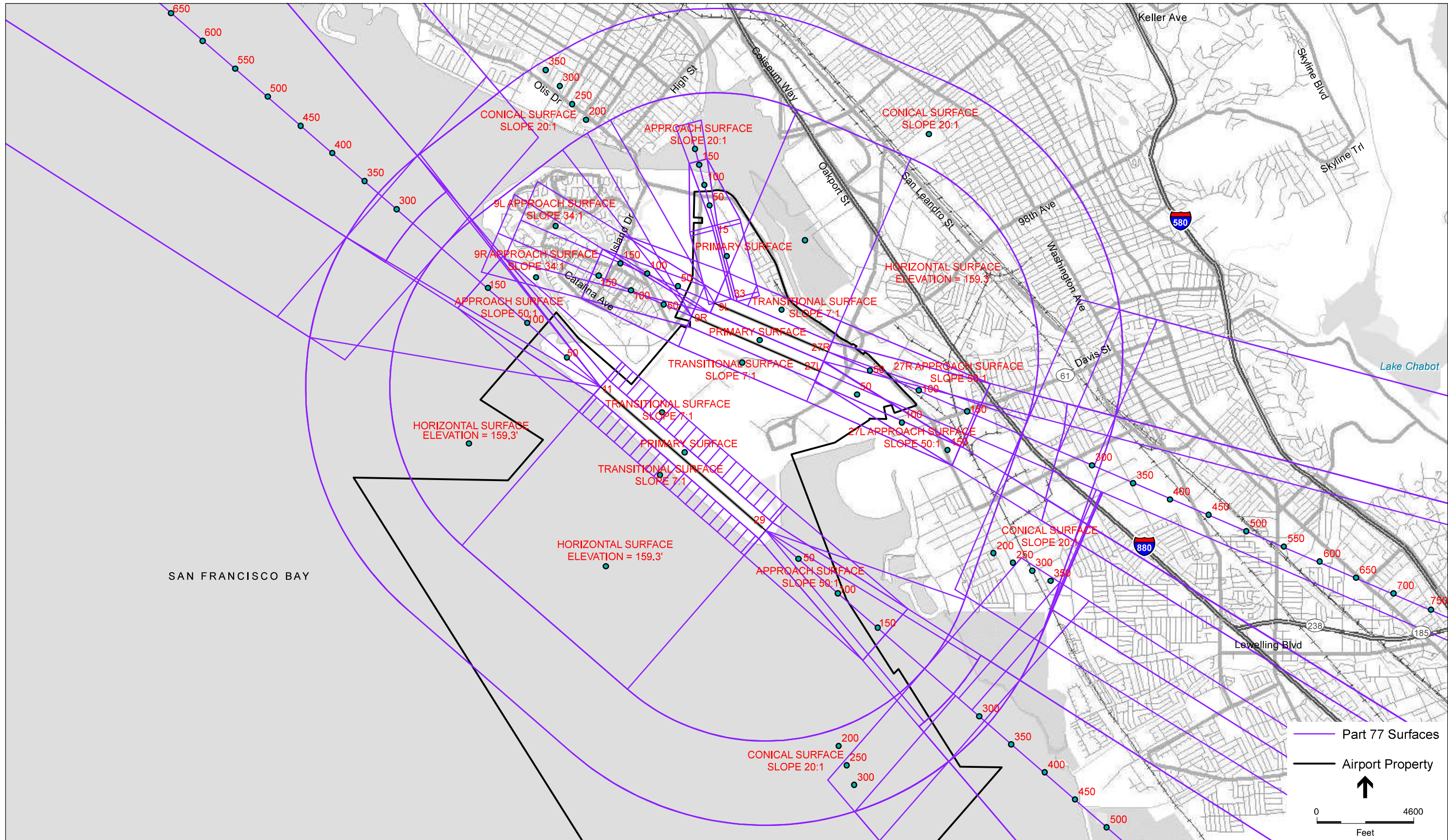
Figure 1-2
Noise Compatibility Zones

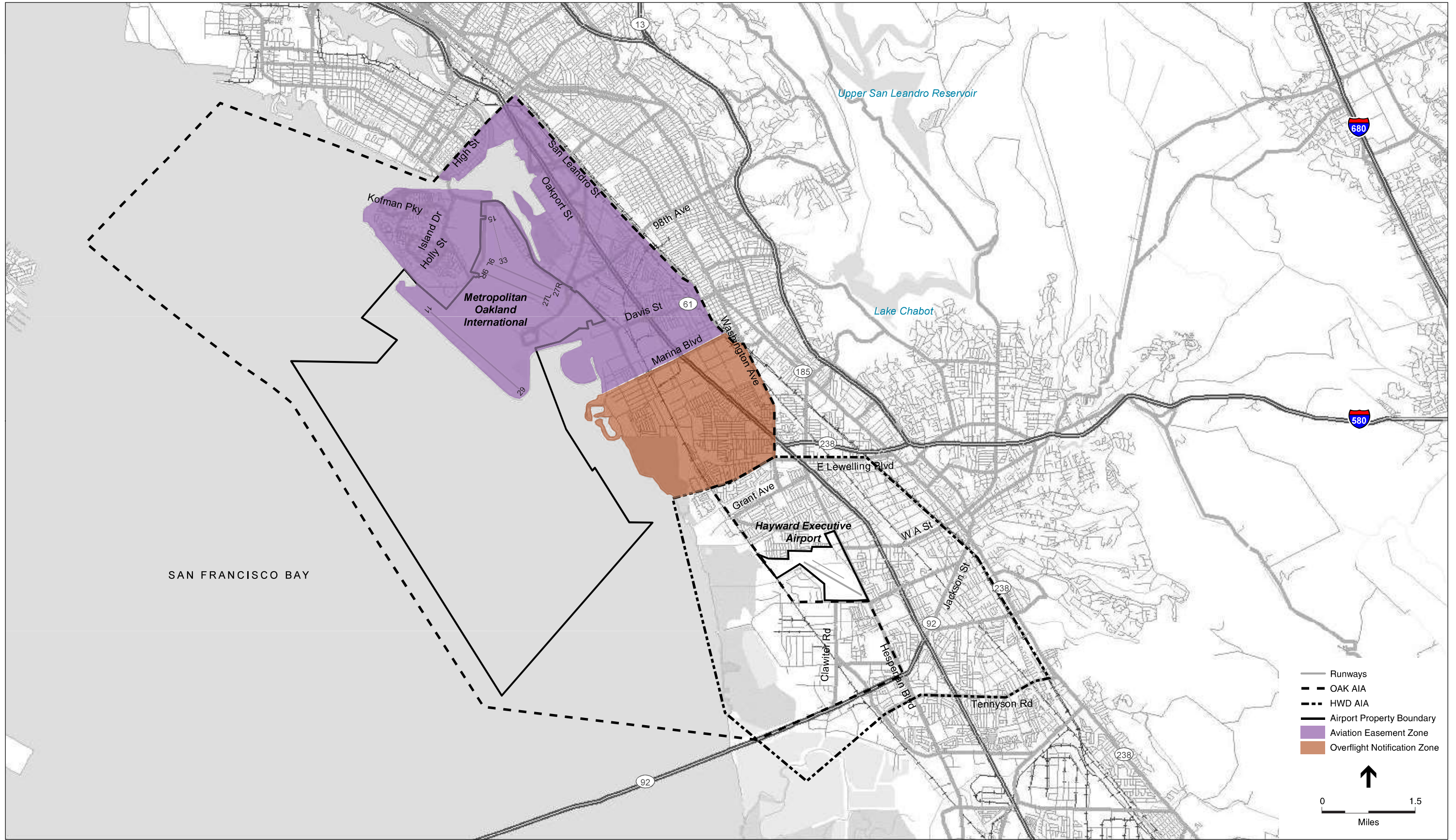


SOURCE: ESA Airports, ESRI, OAK Airport Master Plan, 2006, Caltrans California Airport Land Use Planning Handbook, 2002

Oakland International Airport Land Use Compatibility Plan . 202229

Figure 1-3
Safety Compatibility Zones

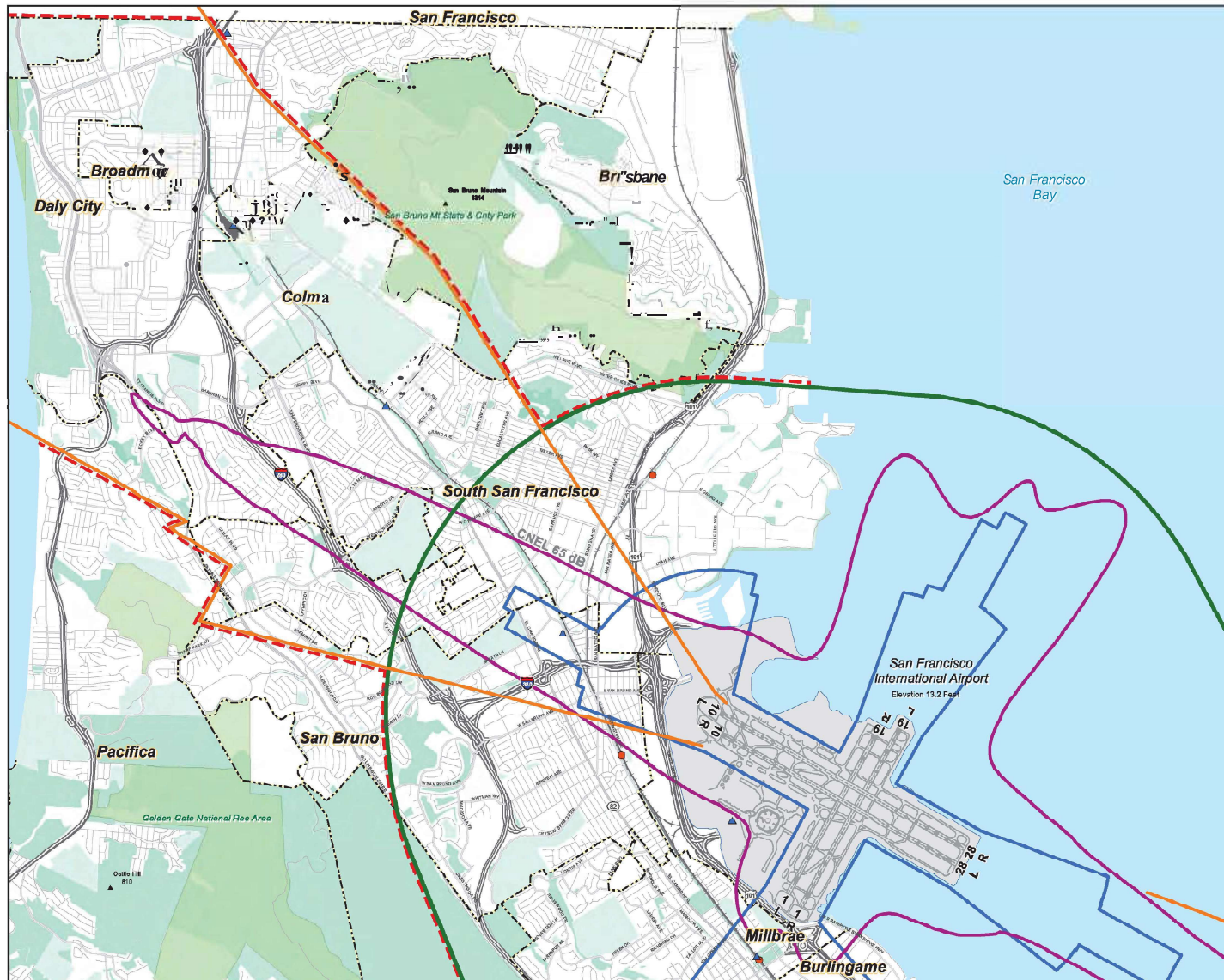




SOURCE: ESA Airports, ESRI, OAK Airport Master Plan, 2006

Oakland International Airport Land Use Compatibility Plan . 202229

Figure 1-5
OAK Overflight Compatibility Zones



- LEGEND**
- - - - - Boundary for Airport Influence Area B
 - - - - - Outer Boundary of Safety Zones
 - - - - - CNEL Contour, 2020 Forecast
 - - - - - 14 CFR Part 77 Contour Surface
 - - - - - Outer Boundary of TERPS Approach and CEI Departure Surfaces
 - [====] Airport Property
 - ◆ BART Station
 - CALTRAIN Station
 - - - - - Municipal Boundary
 - ◆ Railroad
 - ◆ Freeway
 - ◆ Road
 - Local Park, G&J Course, Cemetery
 - Regional Park or Recreation Area
 - Open Space

Sources:

1001 F M Notification Zone: Ricardo & Associates, Inc. and Jacobs Consultancy, based on 14 CFR Part 77, Subpart B, Section 77.2.

Outer Boundary of TERPS Approach and CEI Departure Surfaces: San Francisco International Airport, Jacobs Consultancy, and Planning Technology Inc., 2009

Safety Compatibility Zones: Jacobs Consultancy Team, 2009; Ricardo & Associates, Inc., 2011

Noise Contour: UFS Corporation and BridgeNet International. Draft Environmental Assessment, San Francisco International Airport Proposed Runway Safety Area Program, June 2011

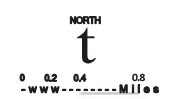


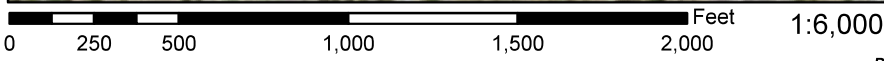
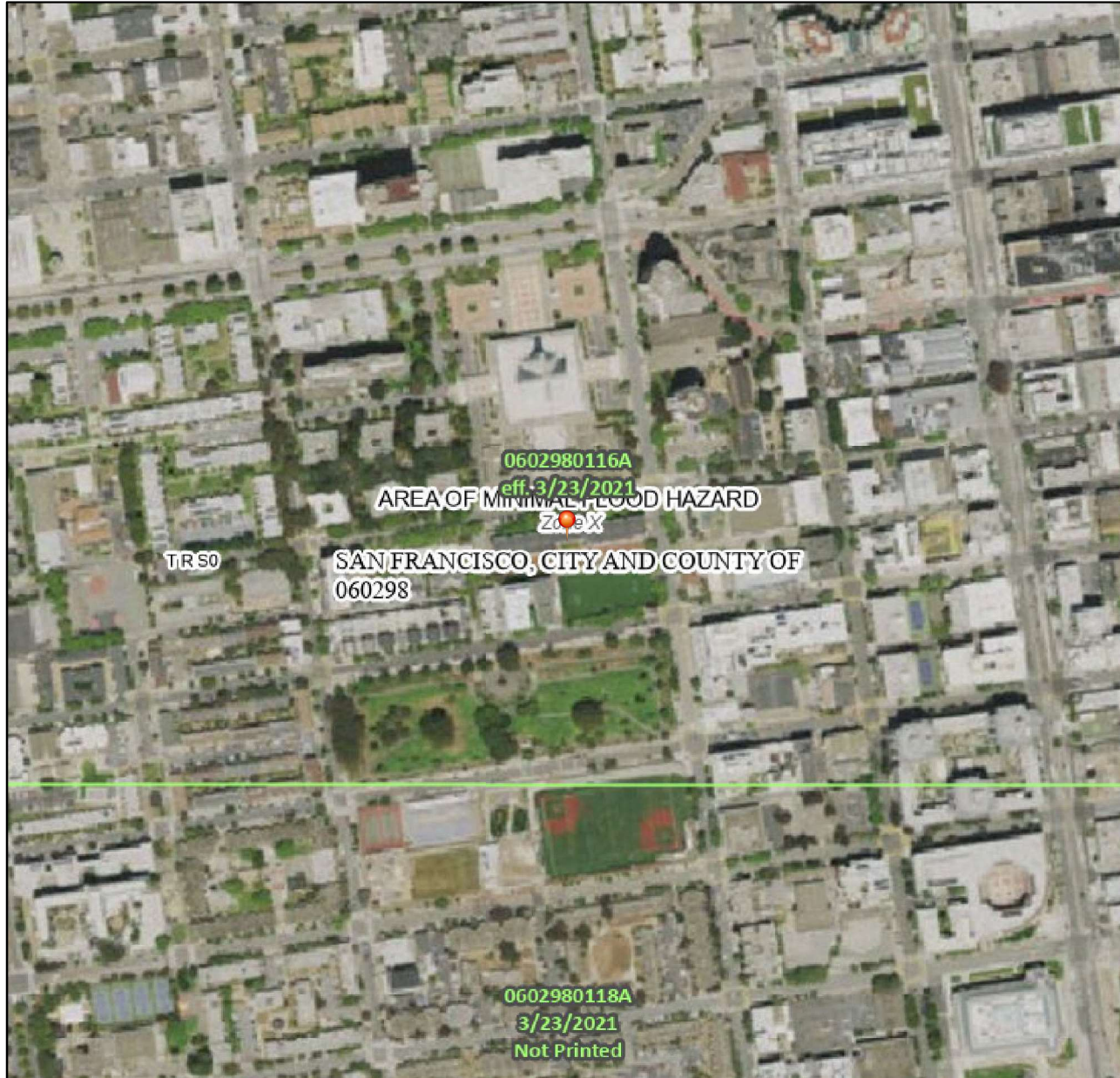
Exhibit IV-3
AIRPORT INFLUENCE AREA B - NORTH SIDE
 Comprehensive Airport Land Use Plan
 for the Environs of San Francisco International Airport
C/CAG
 City/County Association of Governments
 of San Mateo County, California

Figure 1-6

National Flood Hazard Layer FIRMette



122°25'49"W 37°47'13"N



122°25'12"W 37°46'45"N

Basemap Imagery Source: USGS National Map 2023

Legend

SEE FIS REPORT FOR DETAILED LEGEND AND INDEX MAP FOR FIRM PANEL LAYOUT

SPECIAL FLOOD HAZARD AREAS		Without Base Flood Elevation (BFE) Zone A, V, A99
		With BFE or Depth Zone AE, AO, AH, VE, AR Regulatory Floodway
OTHER AREAS OF FLOOD HAZARD		0.2% Annual Chance Flood Hazard, Areas of 1% annual chance flood with average depth less than one foot or with drainage areas of less than one square mile Zone X
		Future Conditions 1% Annual Chance Flood Hazard Zone X
		Area with Reduced Flood Risk due to Levee, See Notes, Zone X
OTHER AREAS		Area with Flood Risk due to Levee Zone D
		NO SCREEN Area of Minimal Flood Hazard Zone X Effective LOMRs
		Area of Undetermined Flood Hazard Zone D
GENERAL STRUCTURES		Channel, Culvert, or Storm Sewer
		Levee, Dike, or Floodwall
OTHER FEATURES		20.2 Cross Sections with 1% Annual Chance Water Surface Elevation
		17.5 Cross Sections with 1% Annual Chance Water Surface Elevation
		Coastal Transect
		Base Flood Elevation Line (BFE)
		Limit of Study
MAP PANELS		Jurisdiction Boundary
		Coastal Transect Baseline
		Profile Baseline
MAP PANELS		Digital Data Available
		No Digital Data Available
		Unmapped



The pin displayed on the map is an approximate point selected by the user and does not represent an authoritative property location.

This map complies with FEMA's standards for the use of digital flood maps if it is not void as described below. The basemap shown complies with FEMA's basemap accuracy standards

The flood hazard information is derived directly from the authoritative NFHL web services provided by FEMA. This map was exported on 12/12/2024 at 7:31 AM and does not reflect changes or amendments subsequent to this date and time. The NFHL and effective information may change or become superseded by new data over time.

This map image is void if the one or more of the following map elements do not appear: basemap imagery, flood zone labels, legend, scale bar, map creation date, community identifiers, FIRM panel number, and FIRM effective date. Map images for unmapped and unmodernized areas cannot be used for regulatory purposes.

Figure 2-1



FLOOD HAZARD INFORMATION

SEE FIS REPORT FOR DETAILED LEGEND AND INDEX MAP FOR FIRM PANEL LAYOUT
THE INFORMATION DEPICTED ON THIS MAP AND SUPPORTING DOCUMENTATION ARE ALSO AVAILABLE IN DIGITAL FORMAT AT [HTTPS://MSC.FEMA.GOV](https://MSC.FEMA.GOV)

SPECIAL FLOOD HAZARD AREAS		Without Base Flood Elevation (BFE) Zone A, V, A99
		With BFE or Depth Zone AE, AO, AH, VE, AR
		Regulatory Floodway
OTHER AREAS OF FLOOD HAZARD		0.2% Annual Chance Flood Hazard, Areas of 1% annual chance flood with average depth less than one foot or with drainage areas of less than one square mile Zone X
		Future Conditions 1% Annual Chance Flood Hazard Zone X
		Area with Reduced Flood Risk due to Levee See Notes Zone X
OTHER AREAS		Areas of Minimal Flood Hazard Zone X
		Area of Undetermined Flood Hazard Zone D
GENERAL STRUCTURES		Channel, Culvert or Storm Sewer
		Accredited or Provisionally Accredited Levee, Dike or Floodwall
		Non-accredited Levee, Dike or Floodwall
		Dock, Jetty, Pier, Revetment or Seawall
		Cross Sections with 1% Annual Chance Water Surface Elevation (BFE)
		Cross Sections with 1% Annual Chance Water Surface Elevation (BFE)
		Coastal Transect
		Coastal Transect Baseline
		Profile Baseline
		Hydrographic Feature
OTHER FEATURES		Base Flood Elevation Line (BFE)
		Limit of Study
		Jurisdiction Boundary

NOTES TO USERS

For information and questions about this map, available products associated with this FIRM including historic versions of this FIRM, how to order products or the National Flood Insurance Program in general, please call the FEMA Map Information eXchange at 1-877-FEMA-MAP (1-877-336-2627) or visit the FEMA Map Service Center website at <https://msc.fema.gov>. Available products may include previously issued Letters of Map Change, a Flood Insurance Study Report, and/or digital versions of this map. Many of these products can be ordered or obtained directly from the website. Users may determine the current map date for each FIRM panel by visiting the FEMA Map Service Center website or by calling the FEMA Map Information eXchange.

Communities annexing land on adjacent FIRM panels must obtain a current copy of the adjacent panel as well as the current FIRM index. These may be ordered directly from the Map Service Center at the number listed above.

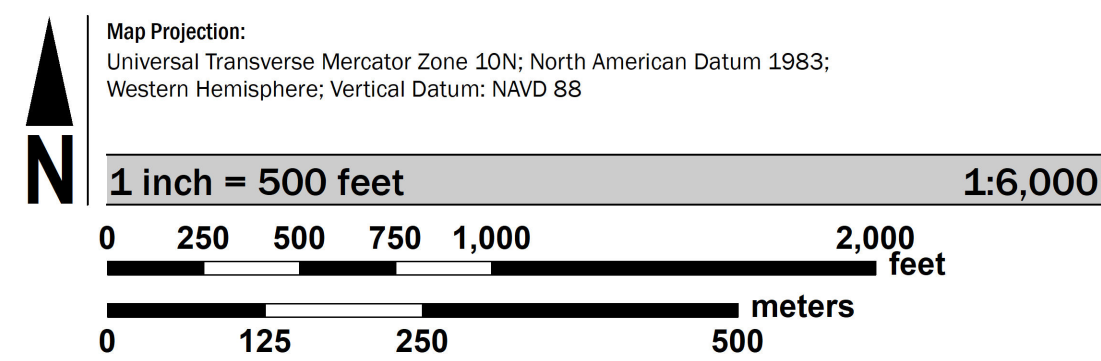
For community and countywide map dates refer to the Flood Insurance Study report for this jurisdiction.

To determine if flood insurance is available in this community, contact your Insurance agent or call the National Flood Insurance Program at 1-800-638-6620.

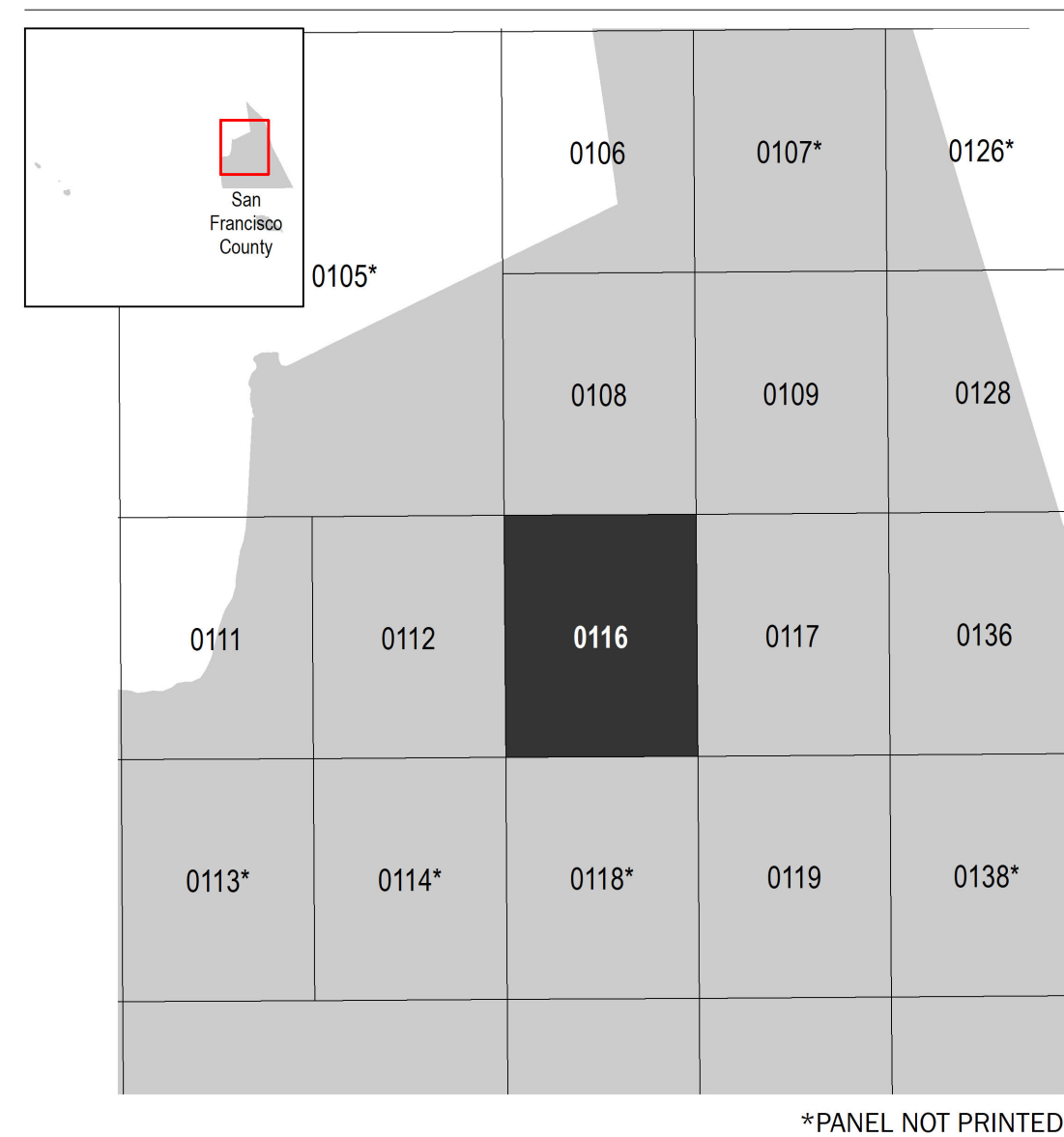
Base map information shown on this FIRM was derived from multiple sources including USDA NAIP imagery dated 2016.

Coastal Base Flood Elevations shown on the map apply only landward of 0.0' North American Vertical Datum of 1988 (NAVD88). Coastal flood elevations are also provided in the Coastal Transect Parameters table in the FIS Report for this jurisdiction. Elevations shown in the Coastal Transect Parameters table should be used for construction and/or floodplain management purposes when they are higher than the elevations shown on the FIRM.

SCALE



PANEL LOCATOR



National Flood Insurance Program

NATIONAL FLOOD INSURANCE PROGRAM
FLOOD INSURANCE RATE MAP

CITY AND COUNTY OF SAN FRANCISCO, CALIFORNIA

PANEL 116 OF 304

Panel Contains:
 COMMUNITY SAN FRANCISCO, CITY AND COUNTY OF

NUMBER PANEL SUFFIX
 060298 0116 A

FEDERAL DEPARTMENT OF HOMELAND SECURITY

FEMA

VERSION NUMBER
2.3.2.0

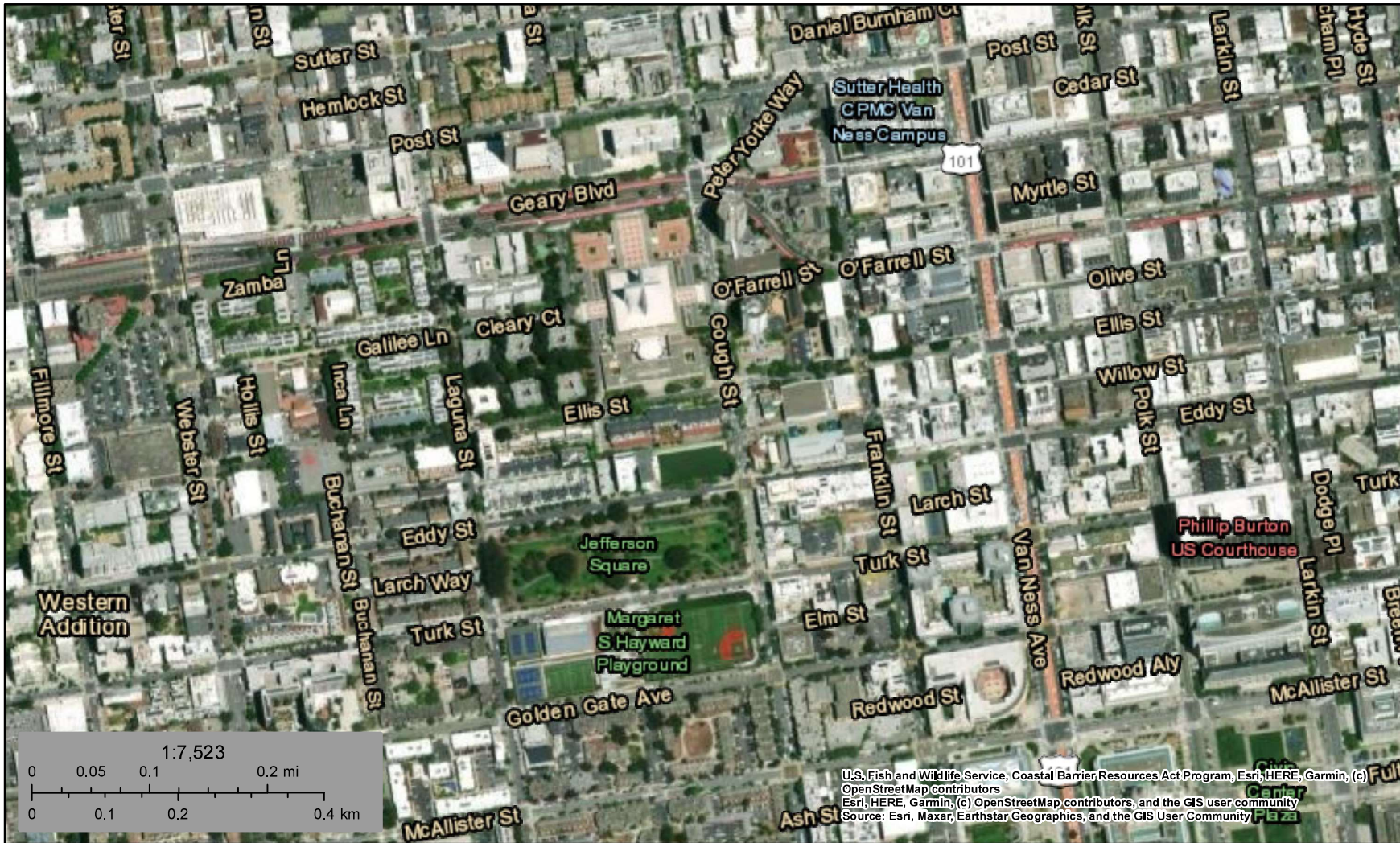
MAP NUMBER
0602980116A

EFFECTIVE DATE
MARCH 23, 2021



U.S. Fish and Wildlife Service
Coastal Barrier Resources System

1155 Ellis St



September 3, 2024

CBRS Buffer Zone

CBRS Units

- Otherwise Protected Area
- System Unit

This map is for general reference only. The Coastal Barrier Resources System (CBRS) boundaries depicted on this map are representations of the controlling CBRS boundaries, which are shown on the official maps, accessible at <https://www.fws.gov/library/collections/official-coastal-barrier-resources-system-maps>. All CBRS related data should be used in accordance with the layer metadata found on the CBRS Mapper website.

The CBRS Buffer Zone represents the area immediately adjacent to the CBRS boundary where users are advised to contact the Service for an official determination (<https://www.fws.gov/service/coastal-barrier-resources-system-property-documentation>) as to whether the property or project site is located "in" or "out" of the CBRS.




CBRS Units normally extend seaward out to the 20- or 30-foot bathymetric contour (depending on the location of the unit). The true seaward

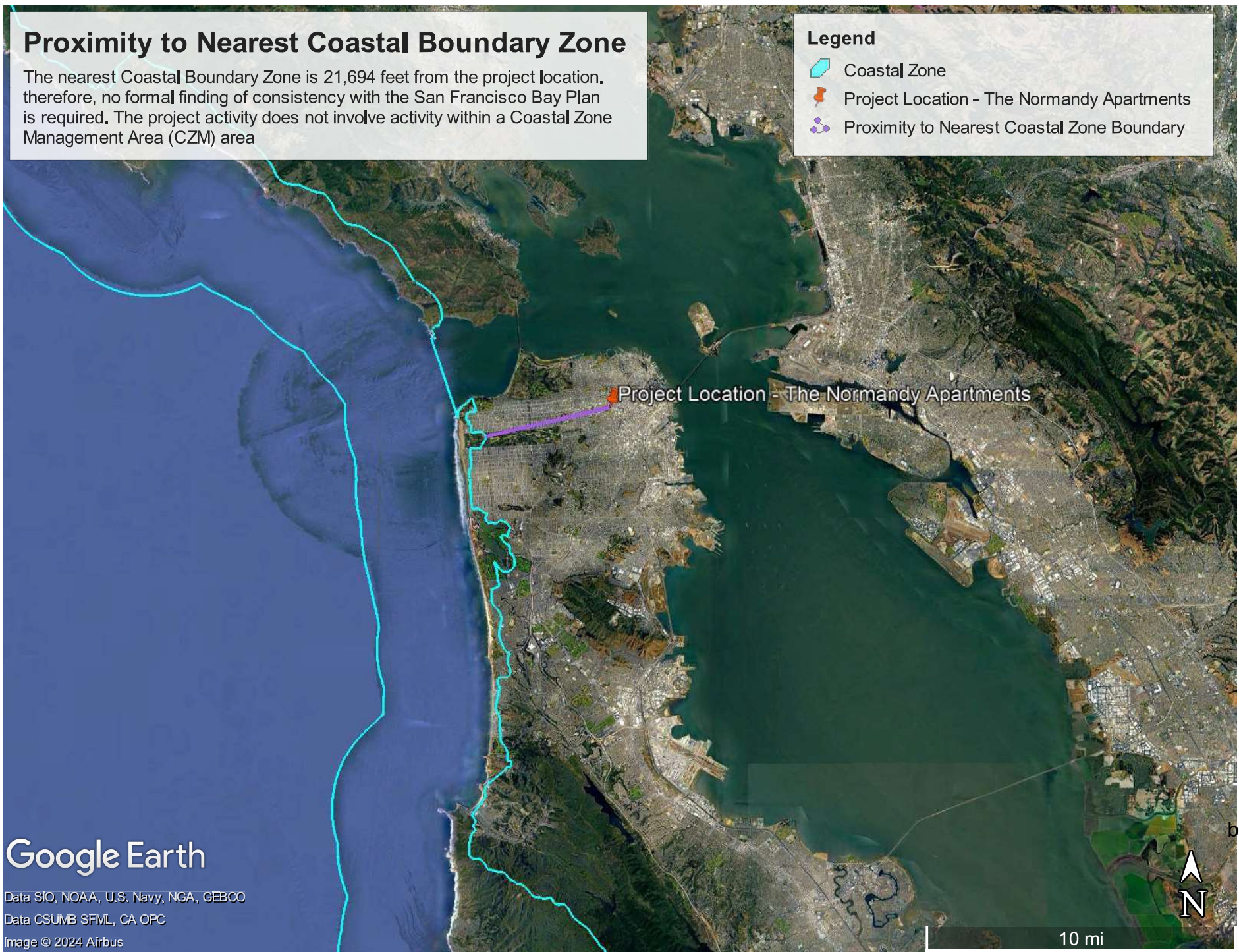
This page was produced by the CBRS Mapper

Proximity to Nearest Coastal Boundary Zone

The nearest Coastal Boundary Zone is 21,694 feet from the project location. therefore, no formal finding of consistency with the San Francisco Bay Plan is required. The project activity does not involve activity within a Coastal Zone Management Area (CZM) area

Legend

-  Coastal Zone
-  Project Location - The Normandy Apartments
-  Proximity to Nearest Coastal Zone Boundary



Google Earth

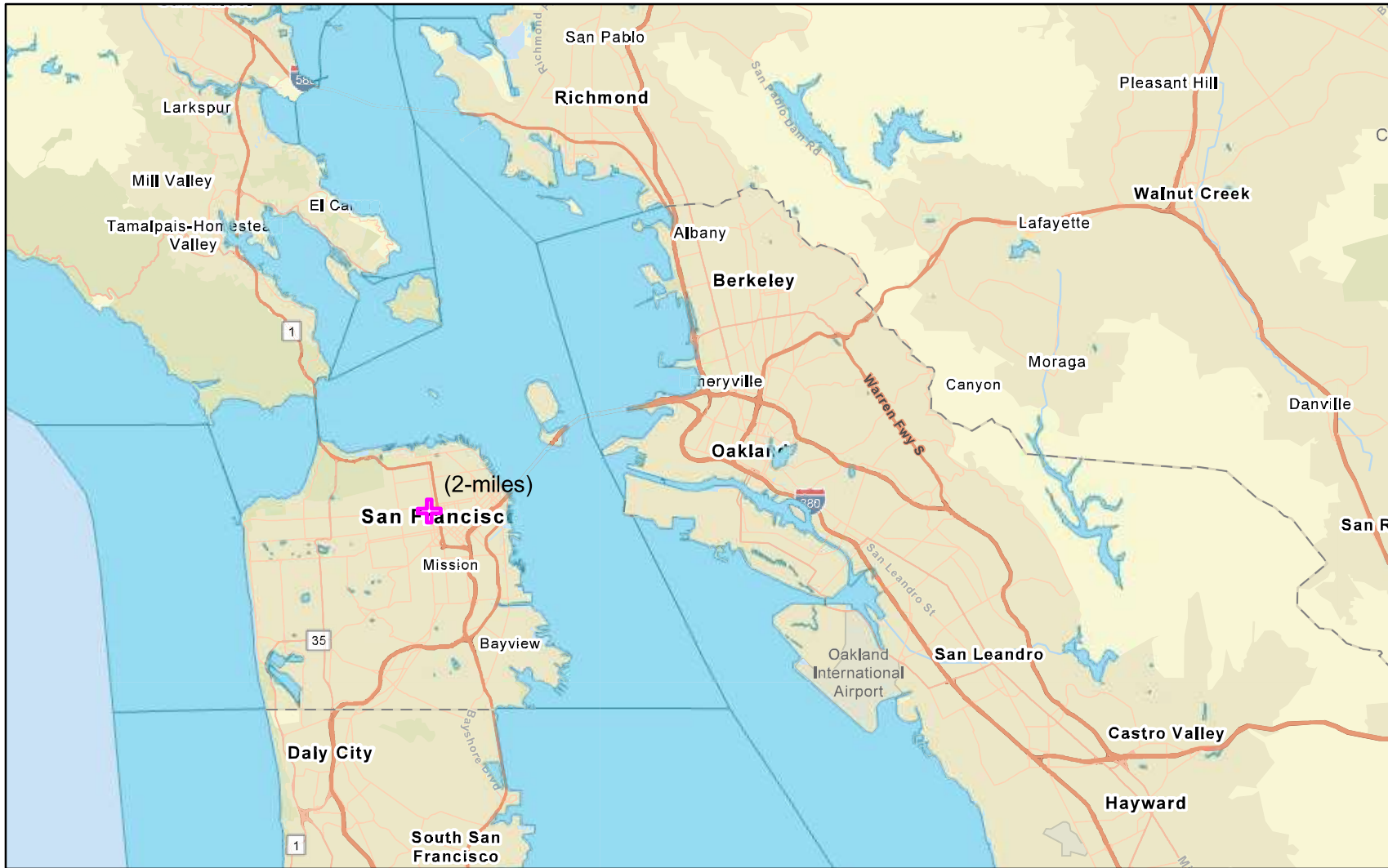
Data SIO, NOAA, U.S. Navy, NGA, GEBCO
Data CSUMB SFML, CA OPC
Image © 2024 Airbus

Figure 3-2





Figure 3-3

Distance to Nearest Body of Water

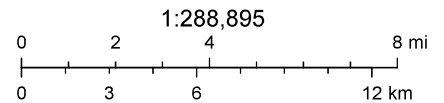


September 3, 2024

 Proposed Project

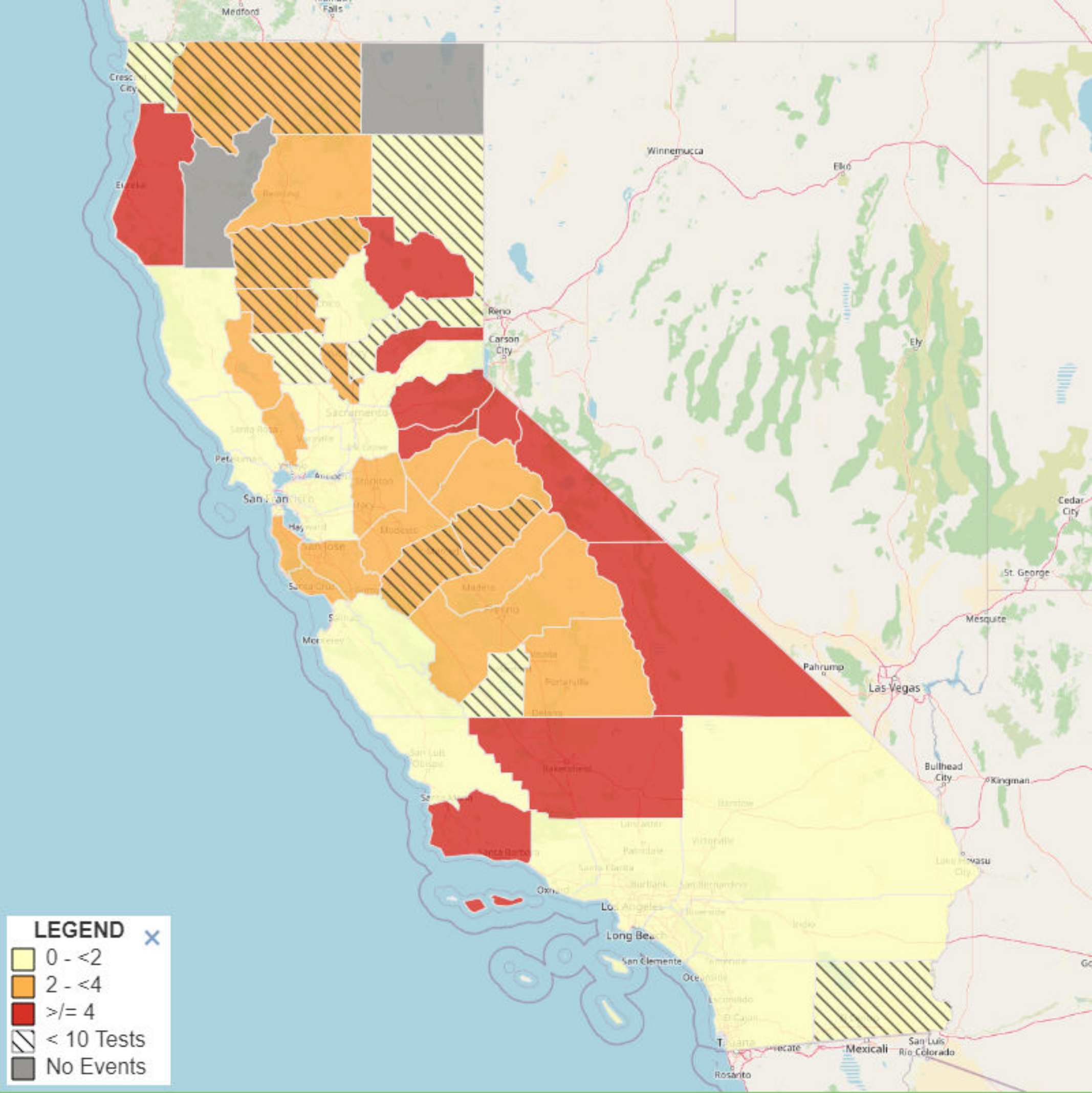
 Water Bodies

Distance to Nearest Body of Water (2-miles)



California State Parks, Esri, TomTom, Garmin, SafeGraph, METI/NASA, USGS, Bureau of Land Management, EPA, NPS, USDA, USFWS

Figure 3-4



RADON | RADON TESTS FROM LABS | MEAN PRE-MITIGATION RADON LEVEL IN TESTED BUILDINGS OVER A 10-YEAR PERIOD | CALIFORNIA | 2008-2017

Figure 4 13 of 22



Distance to Nearest Critical Habitat

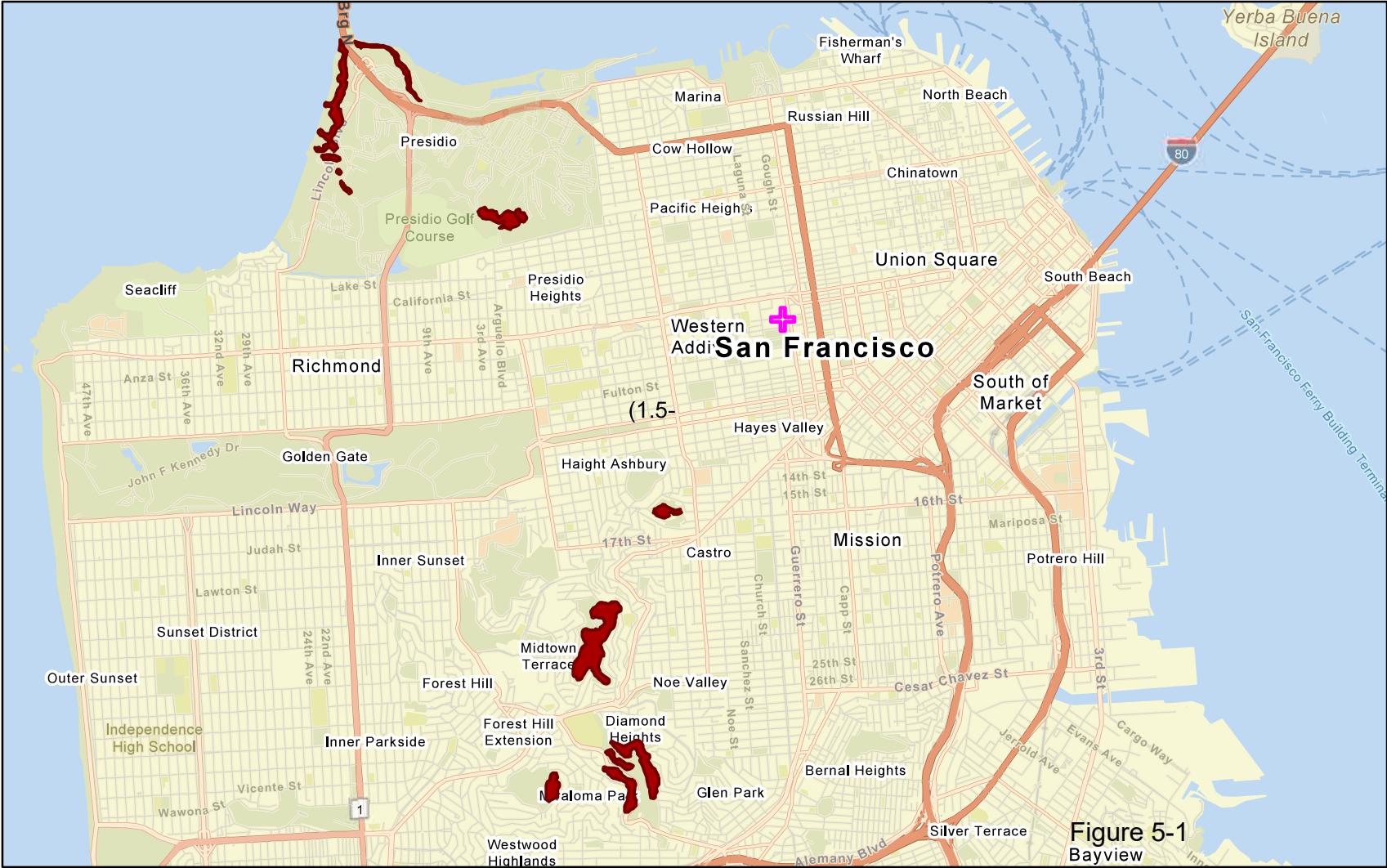
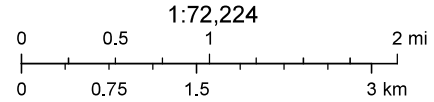


Figure 5-1
Bayview

September 3, 2024

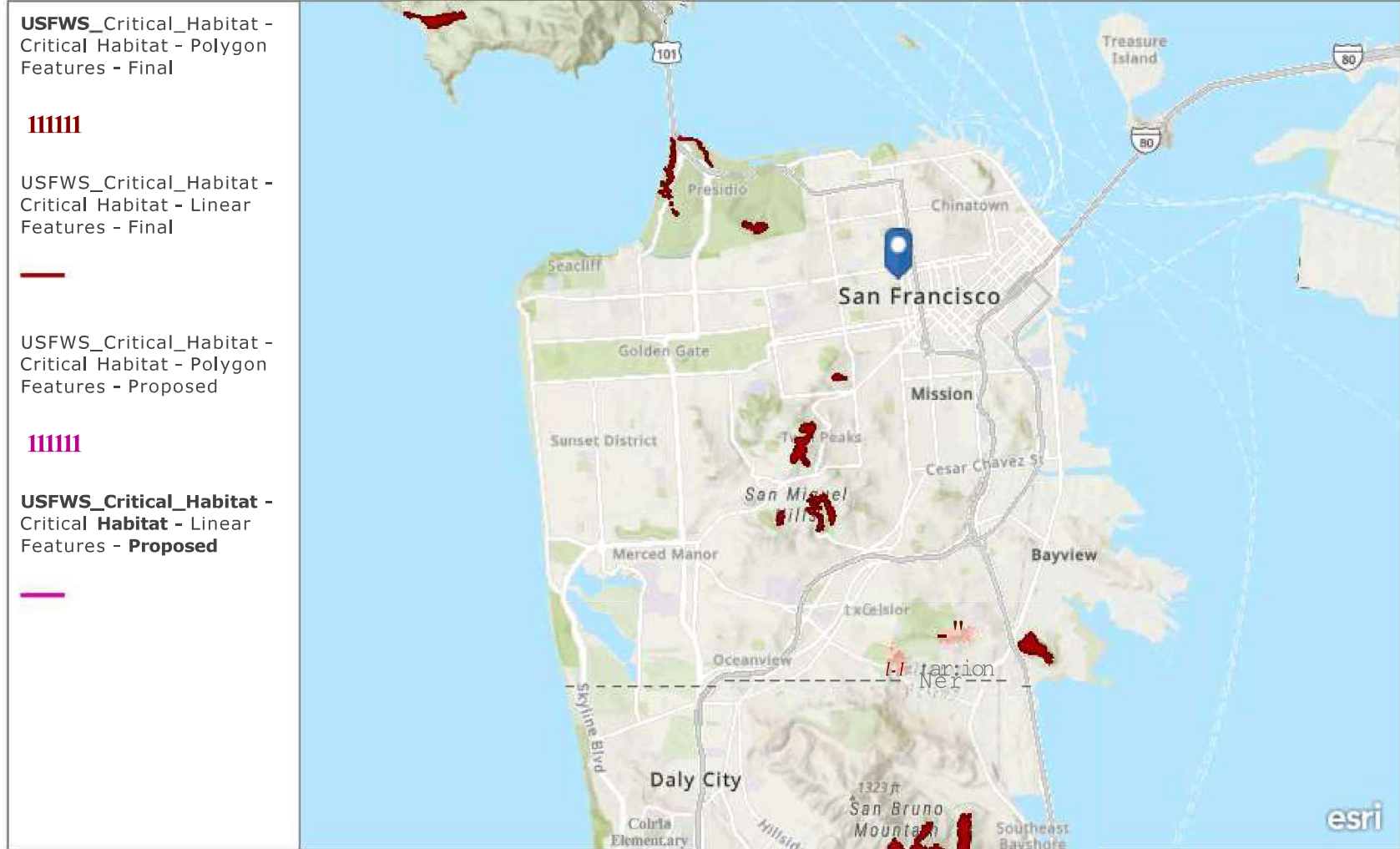
- Critical Habitat - Polygon Features - Final
- Proposed Project

Distance to nearest
Critical Habitat (1.5- miles)



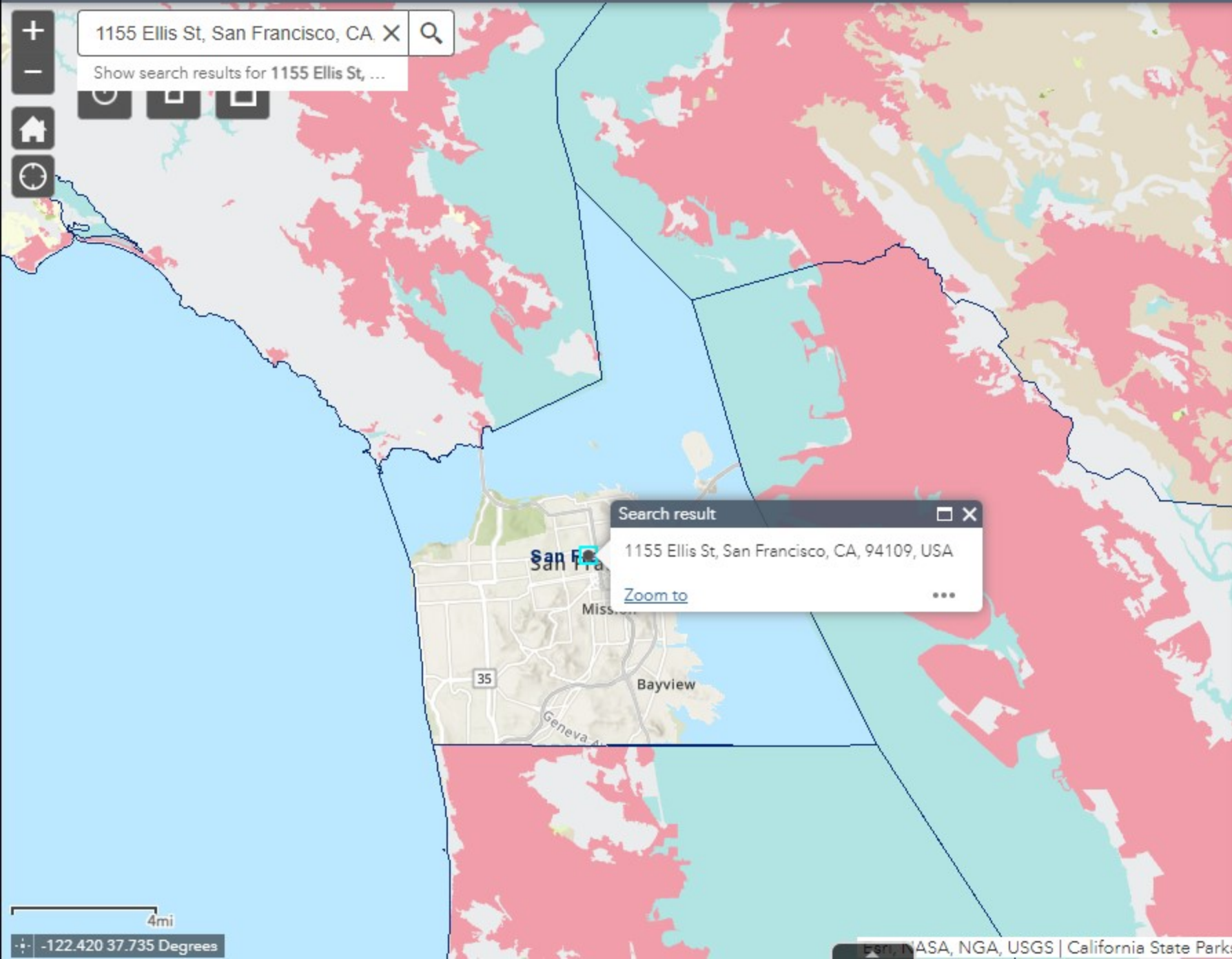
California State Parks, Esri, TomTom, Garmin, SafeGraph, GeoTechnologies, Inc, METI/NASA, USGS, Bureau of Land Management, EPA, NPS, USDA,

My Map



Esri, NASA, NGA, USGS | California State Parks, Esri, TomTom, Garmin, SafeGraph, GeoTechnologies, Inc, METI/NASA, USGS, Bureau of Land Management, EPA, NPS, USDA, USFWS

Figure 5-2



Legend

County Boundaries

County Boundaries



California Important Farmland: Most Recent

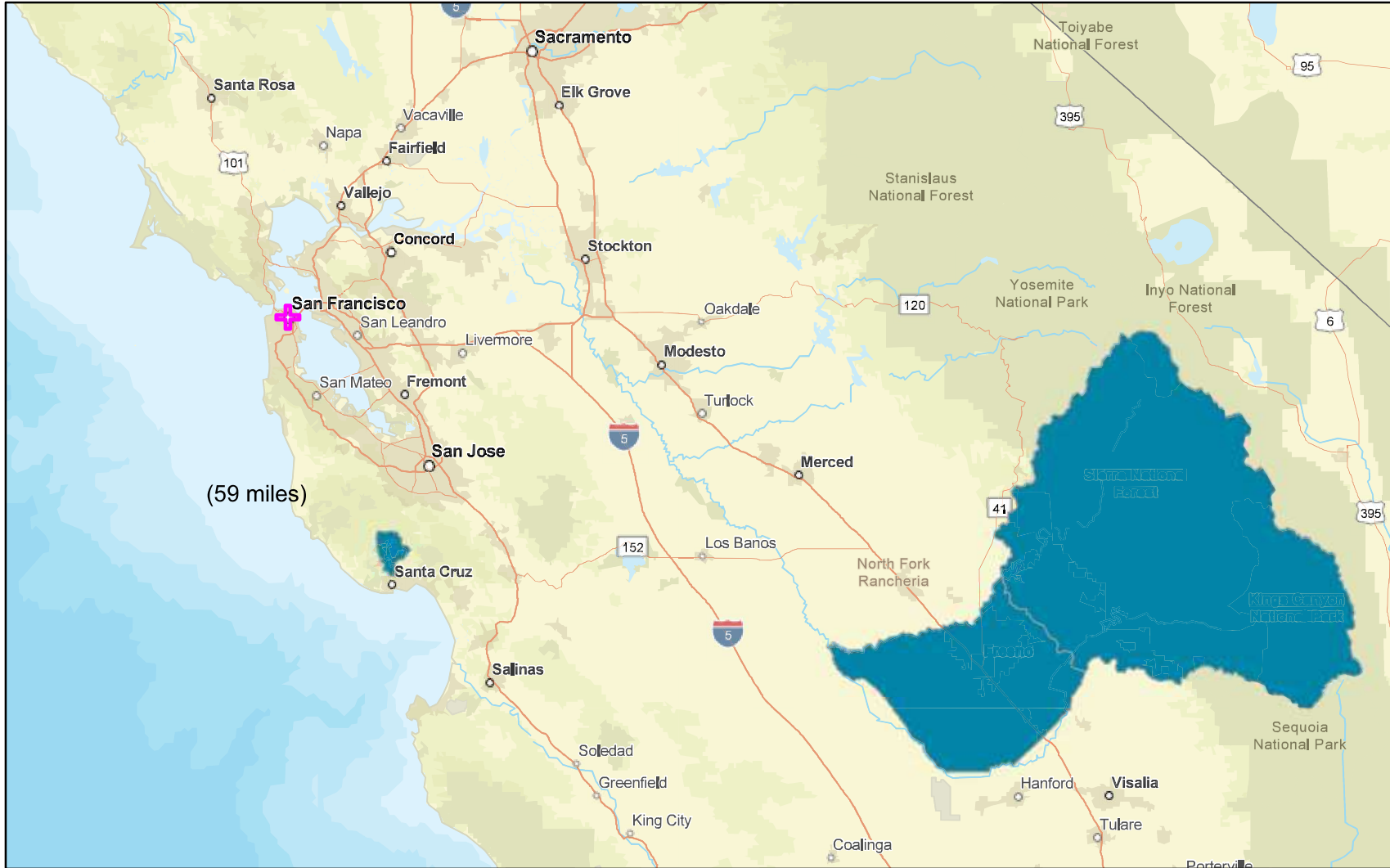
Most Recent

Polygon Type

- Prime Farmland
- Farmland of Statewide Importance
- Unique Farmland
- Grazing Land
- Farmland of Local Importance
- Farmland of Local Potential
- Other Land
- Confined Animal Agriculture
- Nonagricultural or Natural Vegetation
- Vacant or Disturbed Land
- Rural Residential Land
- Semi-agricultural and Rural Commercial Land
- Urban and Built-Up Land
- Water Area
- Irrigated Farmland
- Nonirrigated Farmland

Figure 6

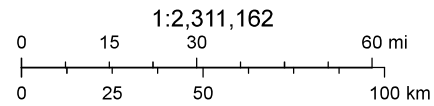
Distance to Nearest Sole Source Aquifer



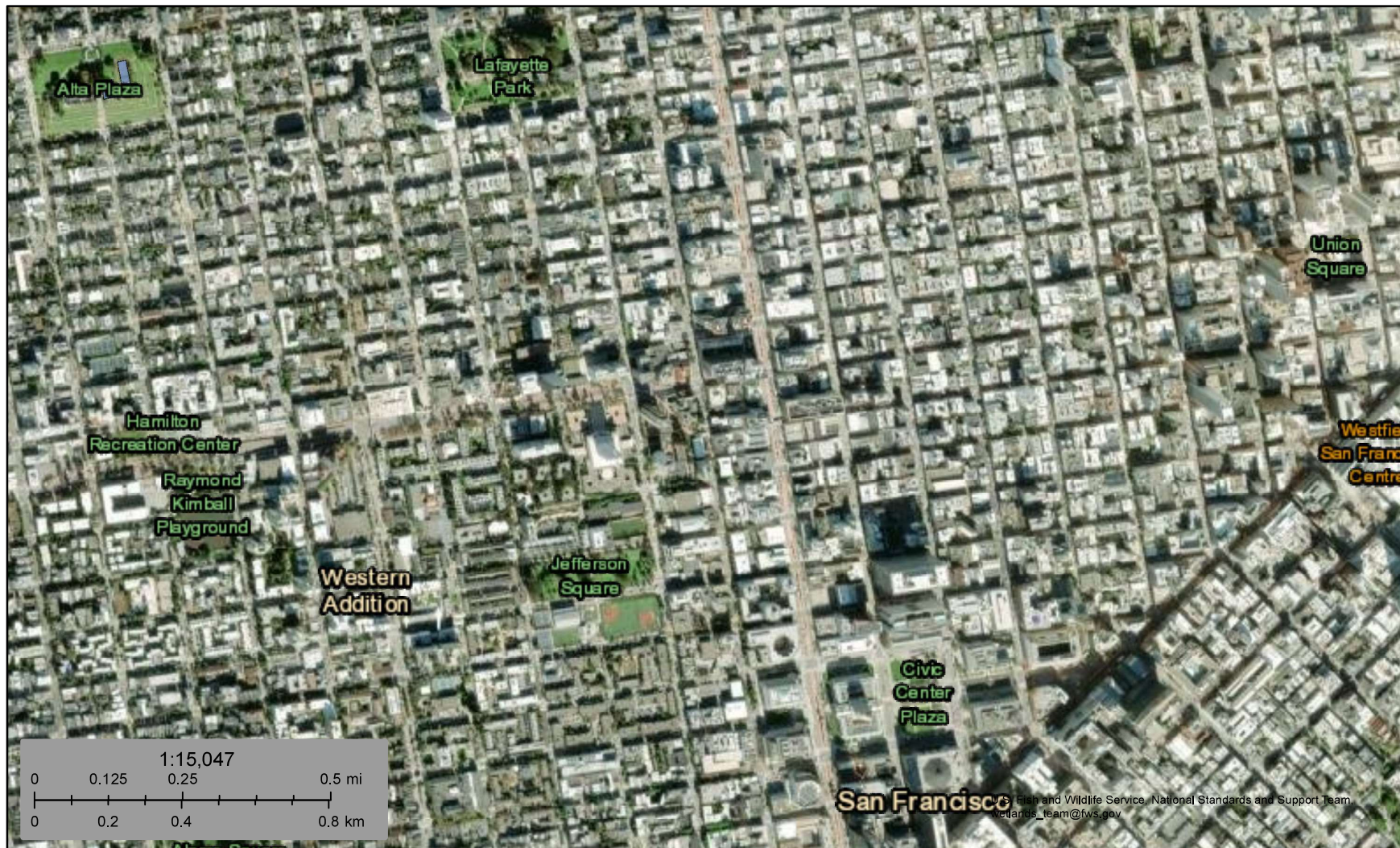
September 3, 2024

- + Proposed Project
- Sole Source Aquifers

Distance to Nearest Sole Source Aquifer (59 miles)



Merced County Association of Gov, California State Parks, Esri, TomTom, Garmin, FAO, NOAA, USGS, Bureau of Land Management, EPA, NPS.



September 4, 2024

Wetlands

- Estuarine and Marine Deepwater
- Estuarine and Marine Wetland

- Freshwater Emergent Wetland
- Freshwater Forested/Shrub Wetland
- Freshwater Pond

- Lake
- Other
- Riverine

This map is for general reference only. The US Fish and Wildlife Service is not responsible for the accuracy or currentness of the base data shown on this map. All wetlands related data should be used in accordance with the layer metadata found on the Wetlands Mapper web site.

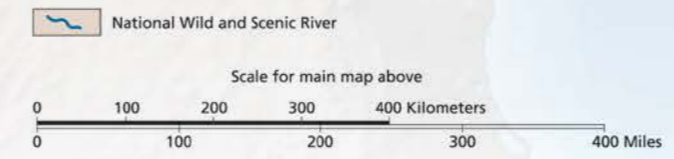
Figure 8

...the time has also come to identify and preserve free-flowing stretches of our great rivers before growth and development make the beauty of the unspoiled waterway a memory.

—President Lyndon B. Johnson, 1965



19 of 22
Figure 9-1



Cartography by National Park Service, Harpers Ferry Center, September 2018, updated by National Information Services Center, February 2023.



National Wild and Scenic Rivers System

Established by Congress under the Wild and Scenic Rivers Act of 1968, the National Wild and Scenic Rivers System was created to preserve the free flow, water quality, and outstanding natural, cultural, and recreational values of select rivers for the enjoyment of present and future generations. The Act is notable for safeguarding the special character of these rivers, while also recognizing the potential for their appropriate use and development. It encourages river management that crosses political boundaries and promotes public participation in developing goals for river protection.

For more information about the National Wild and Scenic Rivers System or specific designated rivers, visit the Interagency Wild and Scenic Rivers Coordinating Council's website, www.rivers.gov, or contact one of the federal river-administering agencies:




- U.S. Forest Service
www.fs.usda.gov
- National Park Service
www.nps.gov
- Bureau of Land Management
www.blm.gov
- U.S. Fish and Wildlife Service
www.fws.gov

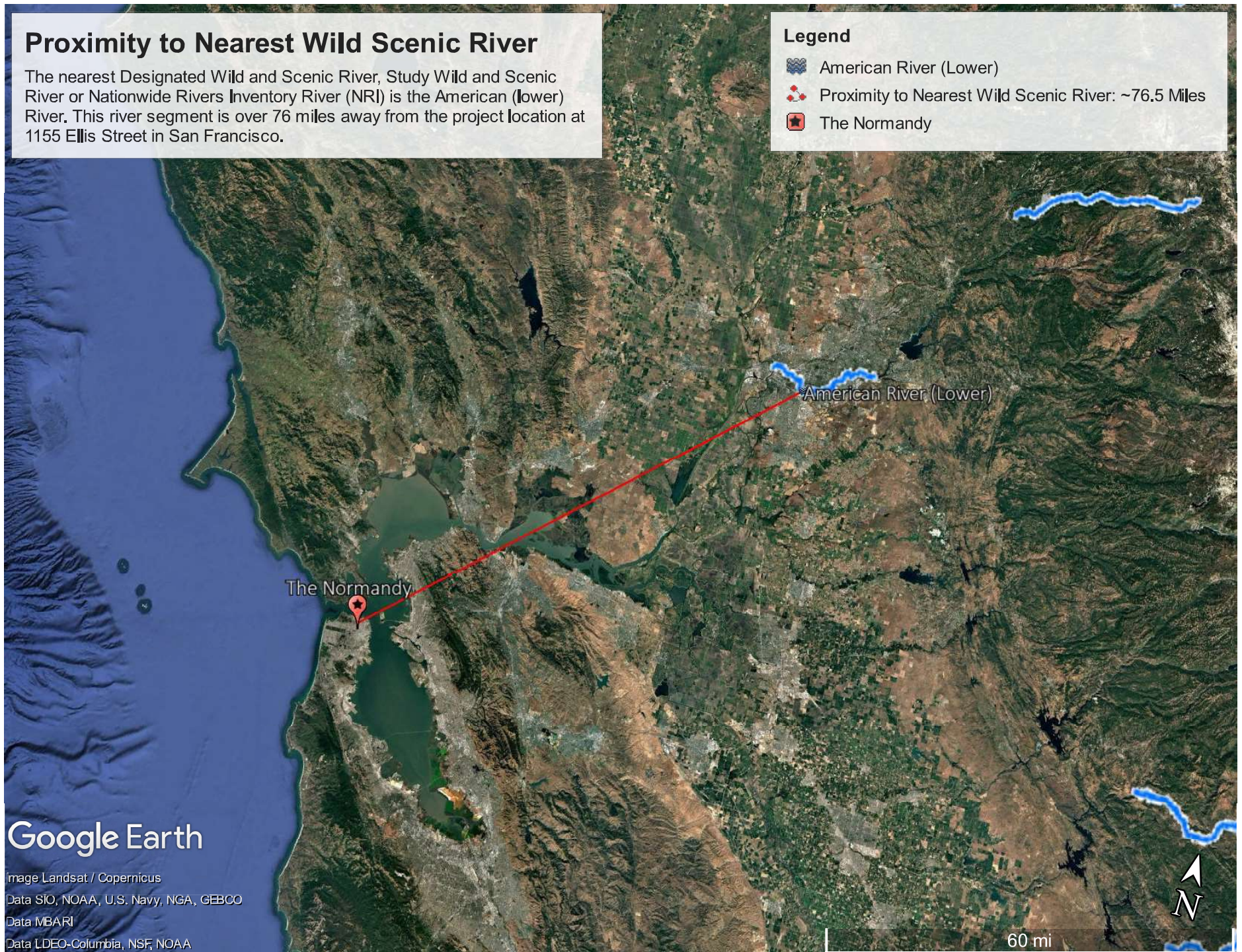


Proximity to Nearest Wild Scenic River

The nearest Designated Wild and Scenic River, Study Wild and Scenic River or Nationwide Rivers Inventory River (NRI) is the American (lower) River. This river segment is over 76 miles away from the project location at 1155 Ellis Street in San Francisco.

Legend

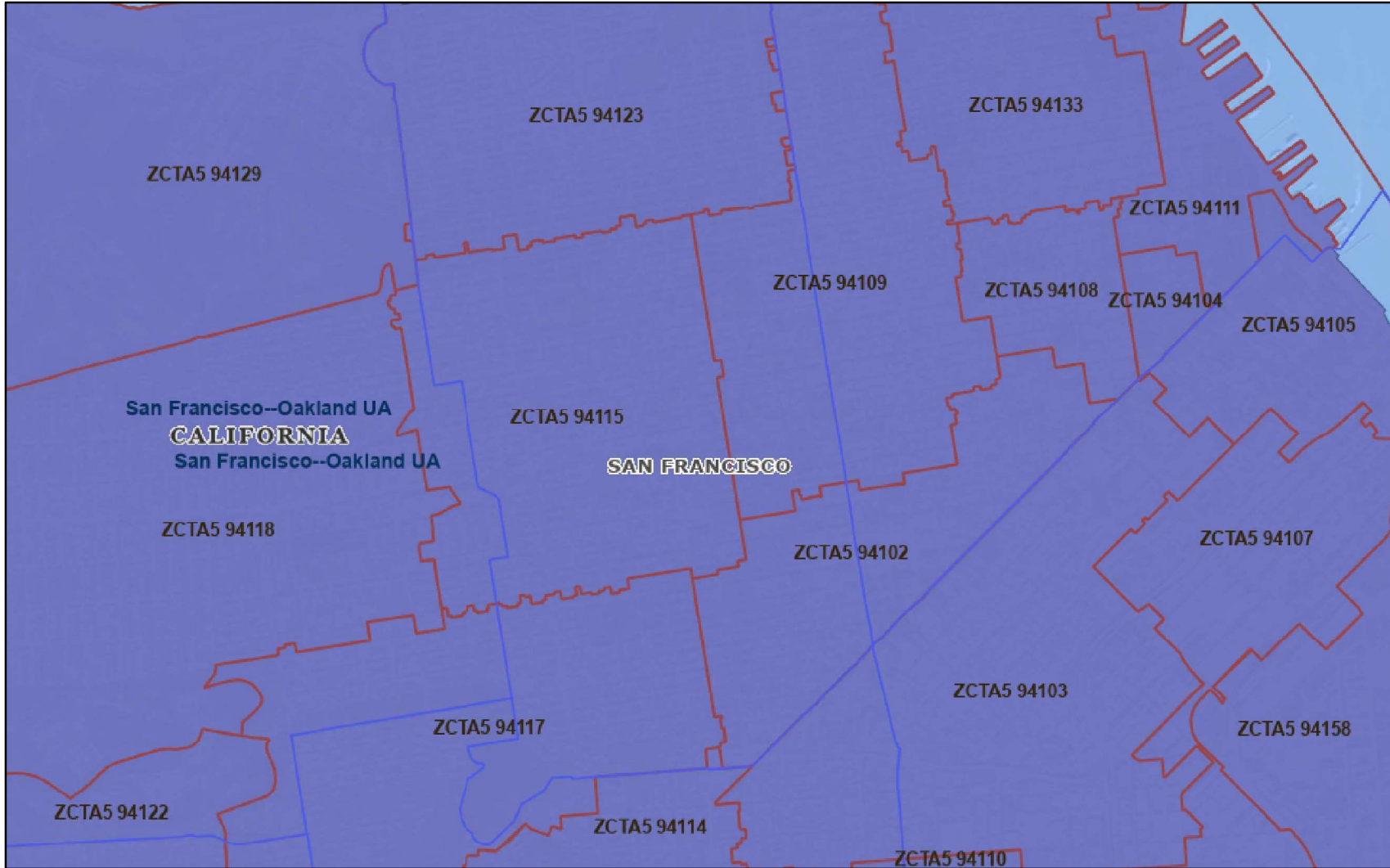
-  American River (Lower)
-  Proximity to Nearest Wild Scenic River: ~76.5 Miles
-  The Normandy



Google Earth

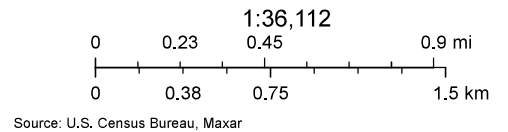
Image Landsat / Copernicus
Data SIO, NOAA, U.S. Navy, NGA, GEBCO
Data MBARI
Data LDEO-Columbia, NSF, NOAA

Normandy Apartments



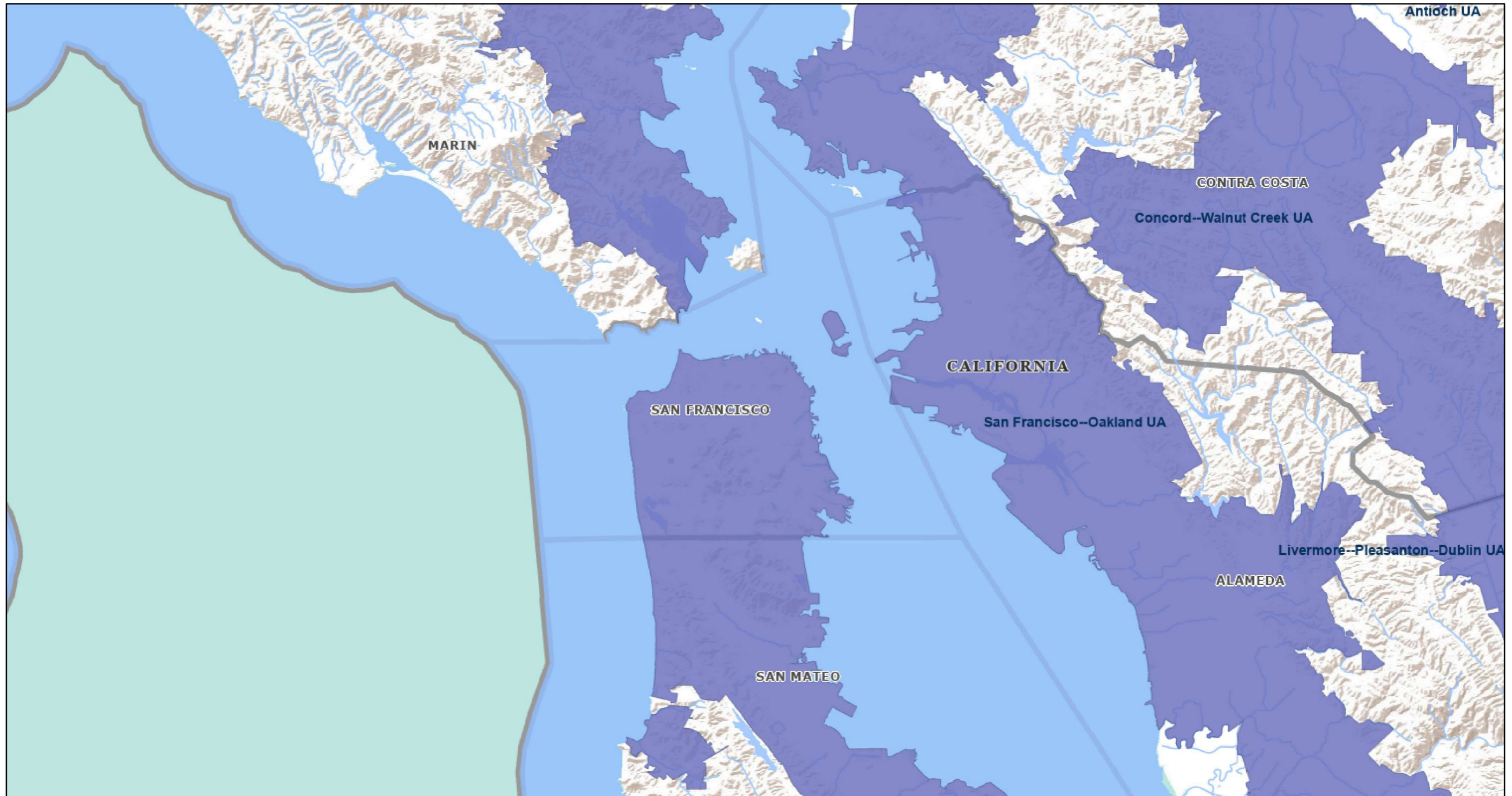
September 5, 2024

- | | | | |
|------------------|------------------------------|----------------------------|------------------------------|
| Counties | 2020 Urban Areas - Corrected | ZIP Code Tabulation Areas | 2020 Urban Areas - Corrected |
| States | ZIP Code Tabulation Areas | Public Use Microdata Areas | Counties |
| 2020 Urban Areas | Public Use Microdata Areas | 2020 Urban Areas | States |



Created with: TIGERweb
 (c)Copyright 2024 - US Census Bureau

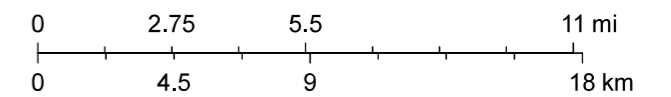
TIGERweb



September 4, 2024

1:288,895

Counties 2020 Urban Areas Counties
States 2020 Urban Areas States



Source: U.S. Census Bureau, Sources: Esri, USGS, NOAA

Created with: TIGERweb
(c)Copyright 2024 - US Census Bureau