

The Vision for Treasure Island & Yerba Buena



A Sustainable Neighborhood



- LEED-Neighborhood Development Platinum (2016)
- Habitat Preservation + Restoration
- New Wastewater Treatment Plant to Distribute Recycled Water
- Local Food Production
- Street Grid Maximizes Sun Exposure and Minimizes Wind

Transit-Oriented Development



- Development Focused Around Central Transit Node for Walk, Bike and Transit
- Mandatory Transit Passes
- High Levels of Transit Service
- Transportation Demand Management Strategies
- On Island Shuttle Service
- Bike & Car Share Programs
- Ferry Service to Downtown

An Active Neighborhood



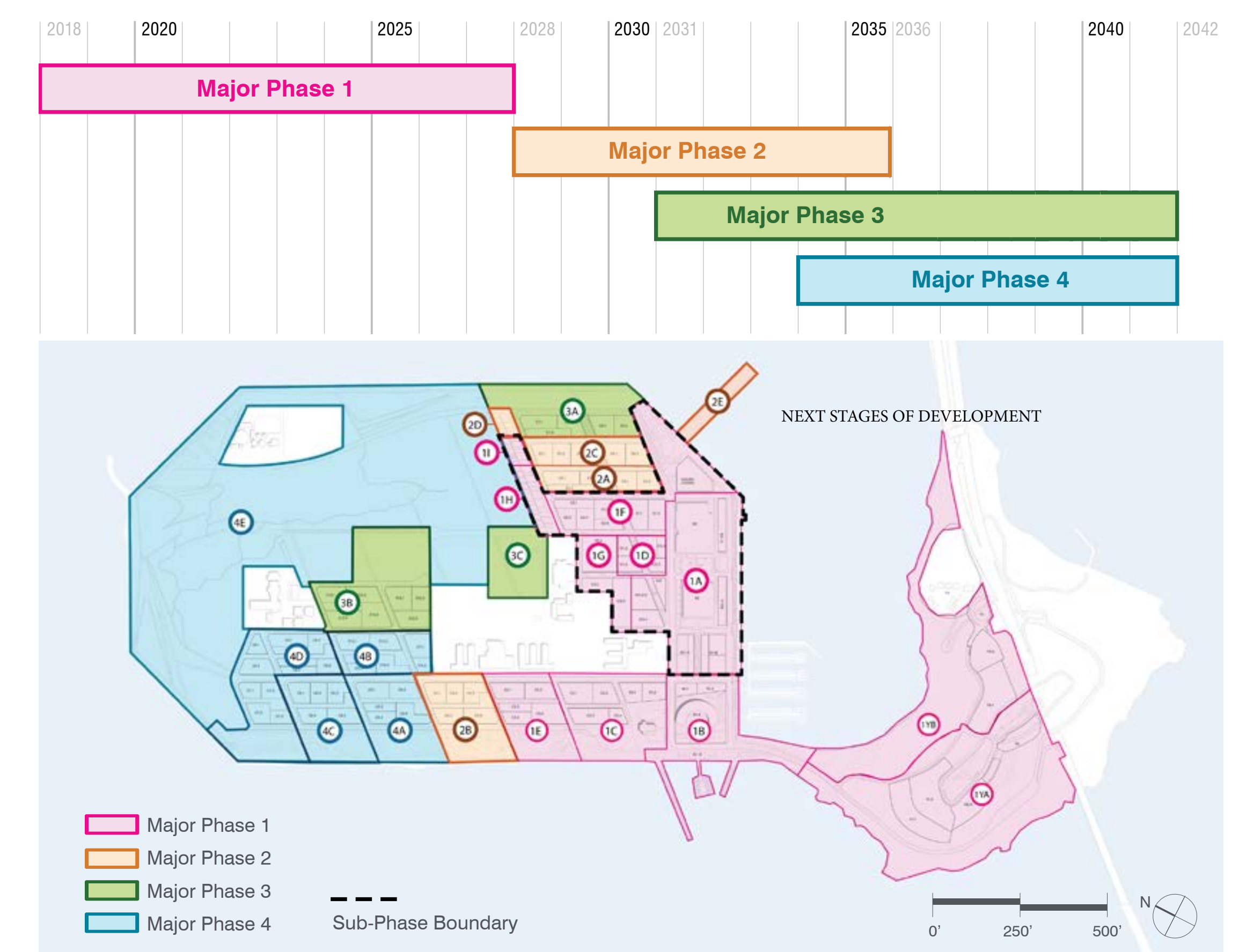
- Up to 8,000 Homes (2,173 Affordable)
- Up to 500 Hotel Rooms
- Up to 300,000 s.f. Retail and Historic Use
- Up to 100,000 s.f. Office
- Historic Building Reuse

Live Safe, Live Well



- 300 Acres of Parks and Open Space
- Transit Facilities, and Operating Subsidy
- New Utilities, Streets, Police and Fire Station, Community Facilities
- Geotechnical Improvements
- Sea Level Rise Adaptations
- 27% Affordable Housing

DEVELOPMENT SCHEDULE



Site plans, community overviews, artistic renderings, computer-enhanced or -generated renderings and other depictions of the proposed community, residences, amenities, services, and other features ("Renderings") are preliminary and for illustrative and conceptual purposes only. Renderings are merely an artist's conception and should not be relied upon, as they may not accurately represent the dimensions, condition, location or actual appearance of the item being represented.

Play Here



TI AND YBI PHASE 1 PARKS

- ① **THE ROCKS DOG PARK**
- Opened 11/2023
- ② **CLIPPER COVE BEACH ACCESS**
- Open to the Public
- ③ **PANORAMA PARK AND SIGNAL POINT**
- Opened 03/2024
- ④ **TREASURE ISLAND LANDING**
- Opened 06/2024
- ⑤ **CITYSIDE PARK - PHASE 1**
- Construction Complete Q1 2025
- Acceptance and Opening Planned Q2 2025
- ⑥ **CHAPEL GROVE**
- Construction Start Q4 2024
- Acceptance and Opening Planned Late 2025
- ⑦ **CLIPPER COVE PARK**
- Construction Start Q4 2024
- Acceptance and Opening Planned Late 2025

Recently Completed Parks

Panorama Park ③

Located at the peak of Yerba Buena Island, Panorama Park offers unrivaled 360-degree views of the Bay Area and includes the 69-foot-high Point of Infinity sculpture, installed late last year by world-renowned artist Hiroshi Sugimoto. Designed to blend seamlessly with the island’s natural landscape, Panorama Park features winding trails, lush native plantings, and serene seating areas perfect for relaxation and reflection.

Signal Point ③

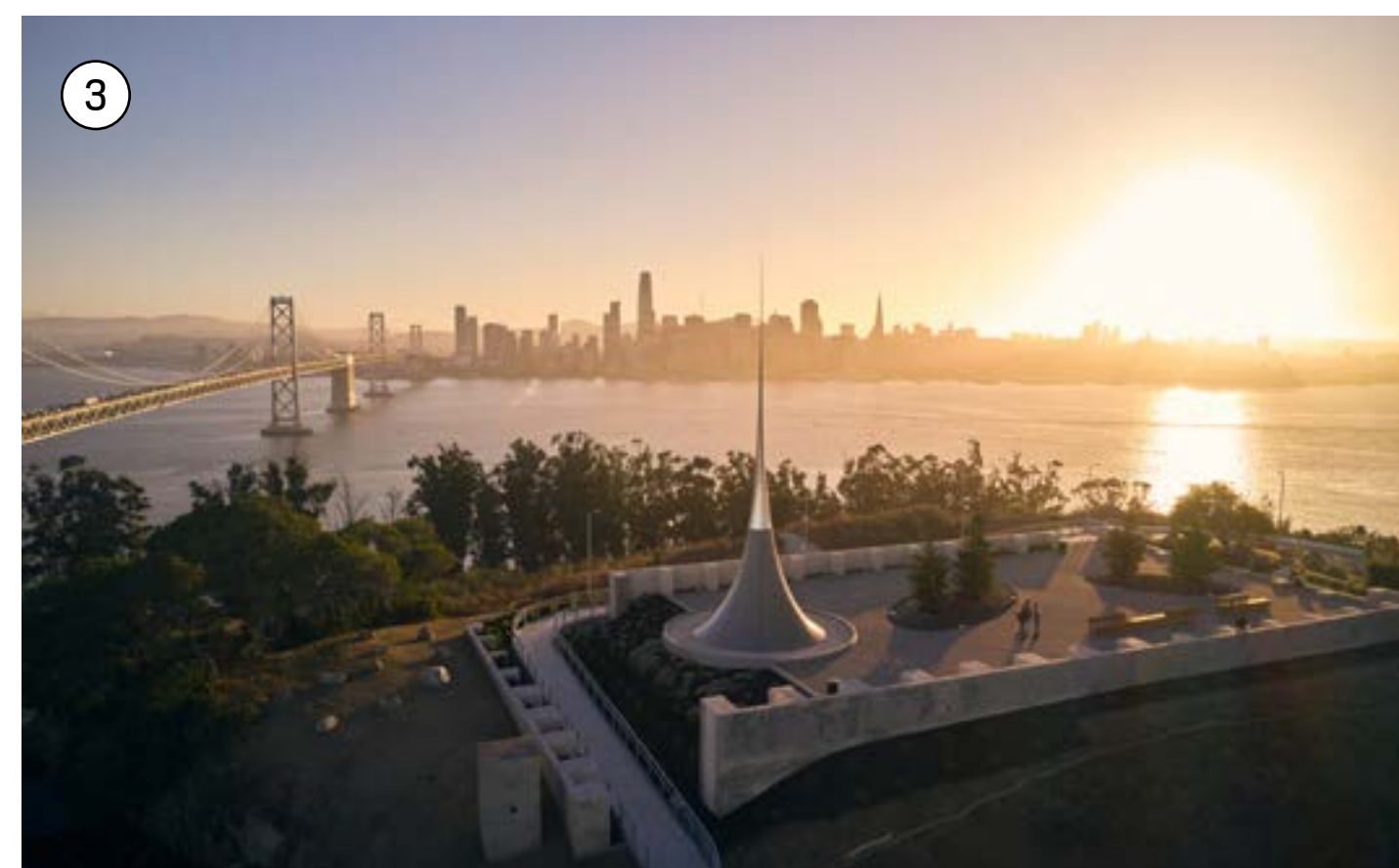
A two-acre overlook adjacent to Panorama Park surrounded by native plantings and oak trees with ample seating and expansive Bay views.

Treasure Island Landing ④

Treasure Island Landing is a vibrant and welcoming gateway to Treasure Island, offering visitors an unforgettable experience of San Francisco Bay’s dynamic waterfront. Located at the future transit center of Treasure Island, this thoughtfully designed public space serves as a bustling hub where history, community, and natural beauty converge. Treasure Island Landing features a lively promenade that invites exploration, with scenic paths, outdoor seating, and gathering areas that offer breathtaking views of the San Francisco skyline, the Bay Bridge, and the surrounding waters.

Park Hours

One hour before dawn to one hour after dusk.



Site plans, community overviews, artistic renderings, computer-enhanced or -generated renderings and other depictions of the proposed community, residences, amenities, services, and other features (“Renderings”) are preliminary and for illustrative and conceptual purposes only. Renderings are merely an artist’s conception and should not be relied upon, as they may not accurately represent the dimensions, condition, location or actual appearance of the item being represented.



San Francisco Planning

San Francisco County Transportation Authority



TREASURE ISLAND SAN FRANCISCO

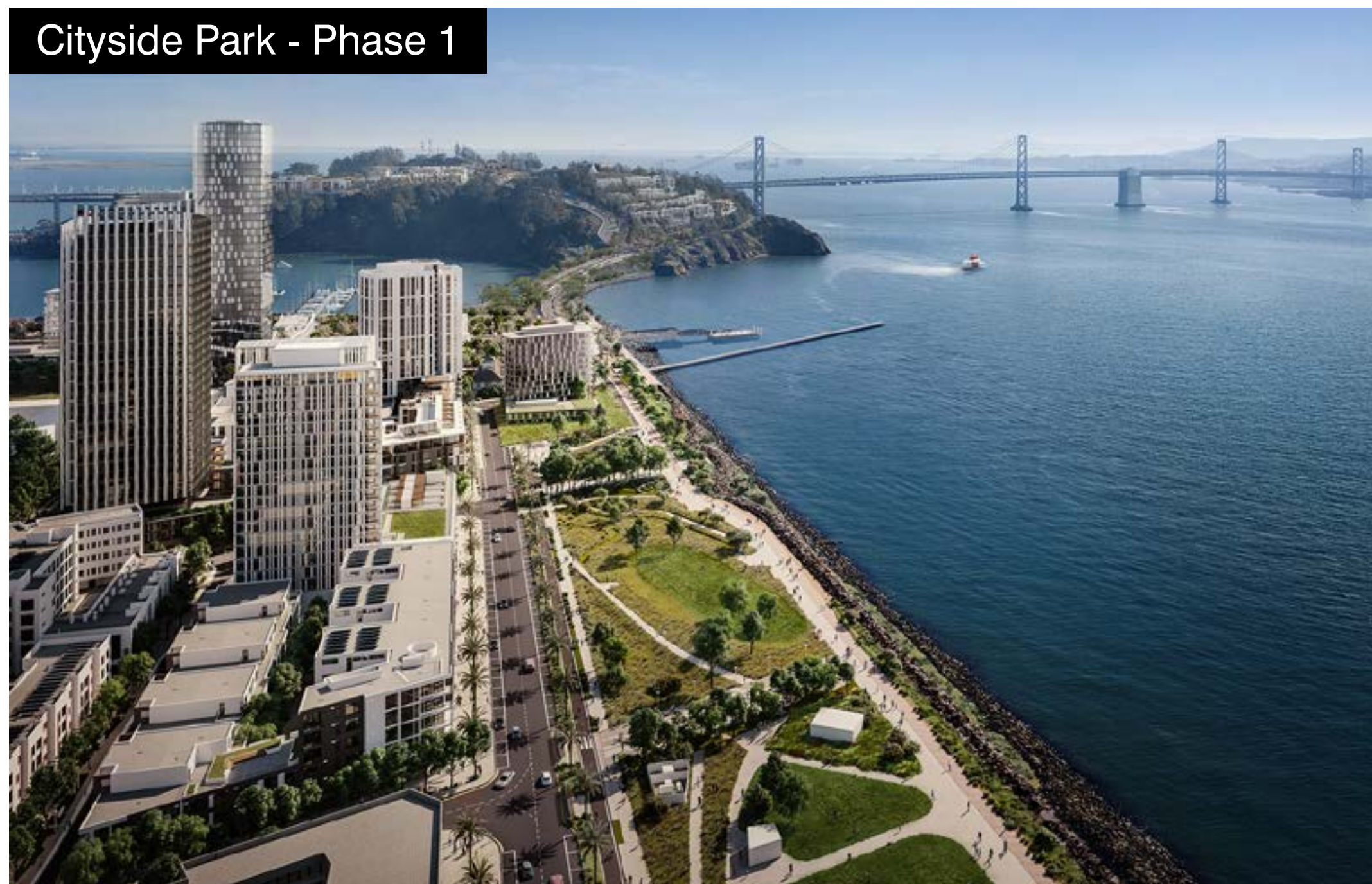


TREASURE ISLAND

METROPOLITAN TRANSPORTATION COMMISSION

Play Here

Cityside Park - Phase 1

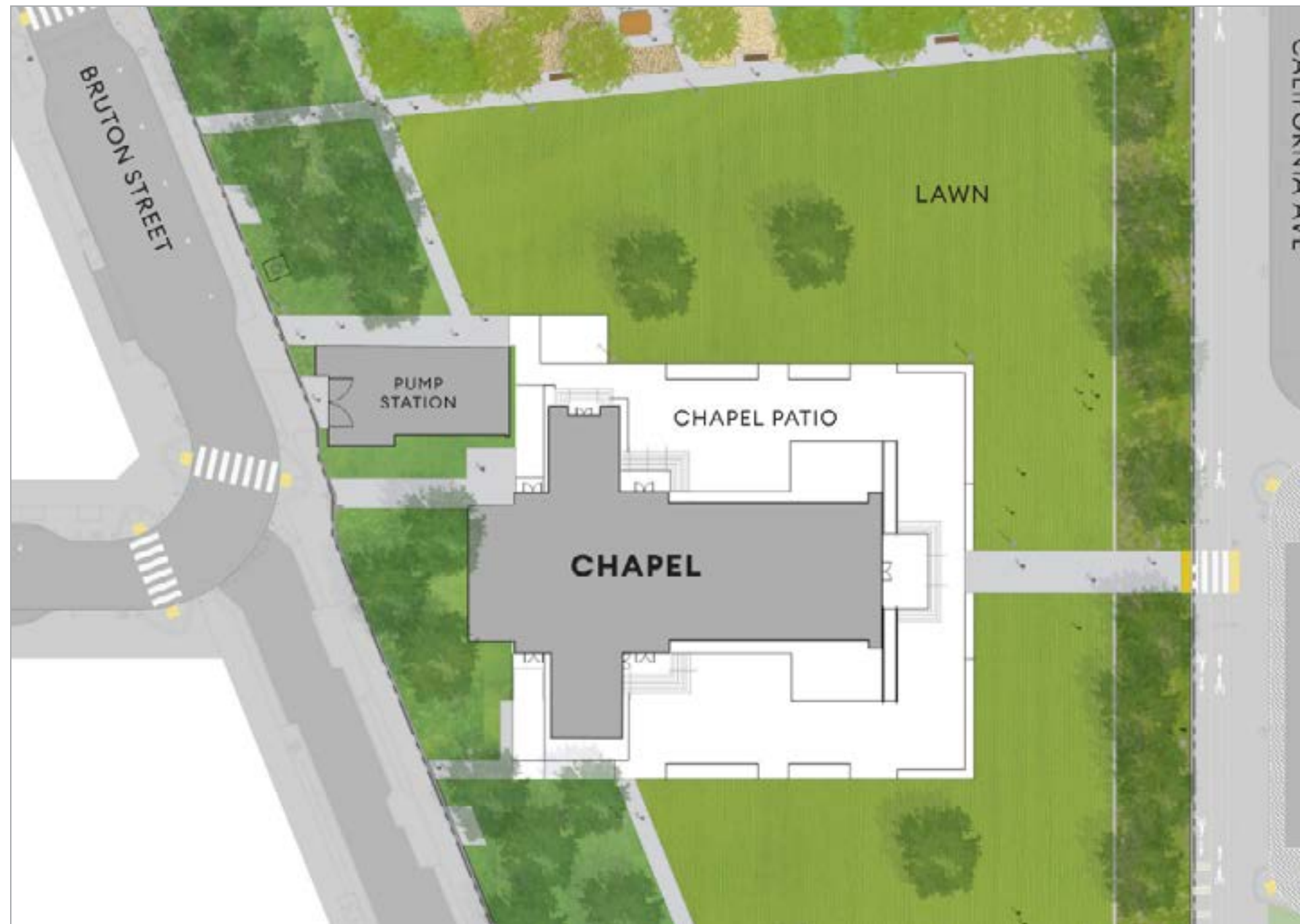


Upcoming Parks

Cityside Park - Phase 1

A waterfront park which will extend along the entire western edge of Treasure Island. The park provides sweeping views of the bay, the city skyline and both the Bay Bridge and Golden Gate Bridge. The first phase includes a large lawn in the center of the park which provides ample space for large events and day-to-day activities. The park also includes plazas and picnic areas for gatherings. The park is planted with a wide variety of plants with a high level of biodiversity and botanical interest.

Chapel Grove



Chapel Grove

Chapel Grove is a flexible open space centered around the existing historic chapel building. The park supports the chapel's community use function by providing generous open lawn areas surrounding the chapel and associated patio space. A grove of trees surround the park at its perimeter, providing shelter from winds coming off of the bay and framing views out towards the bay and city skyline. A network of formal paths connect the park with the adjacent streets and parks, including a wide promenade on the west side of the park, which serves as an extension of the Garden Walks and the neighborhood to the north.

Clipper Cove Park



Clipper Cove Park

Clipper Cove Park is nestled above Clipper Cove Beach, adjacent to the historic Quarters 10 building on Yerba Buena Island. The park offers beach access and is centered on a lawn space with adjacent patio and picnic spaces for gathering and dining. A grove of palm trees creates a vibrant and botanically rich frame to the park and lawn space. The park includes a parking lot and restroom and will be the center of activity for visitors to Clipper Cove.

Site plans, community overviews, artistic renderings, computer-enhanced or -generated renderings and other depictions of the proposed community, residences, amenities, services, and other features ("Renderings") are preliminary and for illustrative and conceptual purposes only. Renderings are merely an artist's conception and should not be relied upon, as they may not accurately represent the dimensions, condition, location or actual appearance of the item being represented.



San Francisco Planning

San Francisco County Transportation Authority



TREASURE ISLAND SAN FRANCISCO



TREASURE ISLAND

METROPOLITAN TRANSPORTATION COMMISSION

Live Here



The Bristol

124 Condos, 40% Occupied



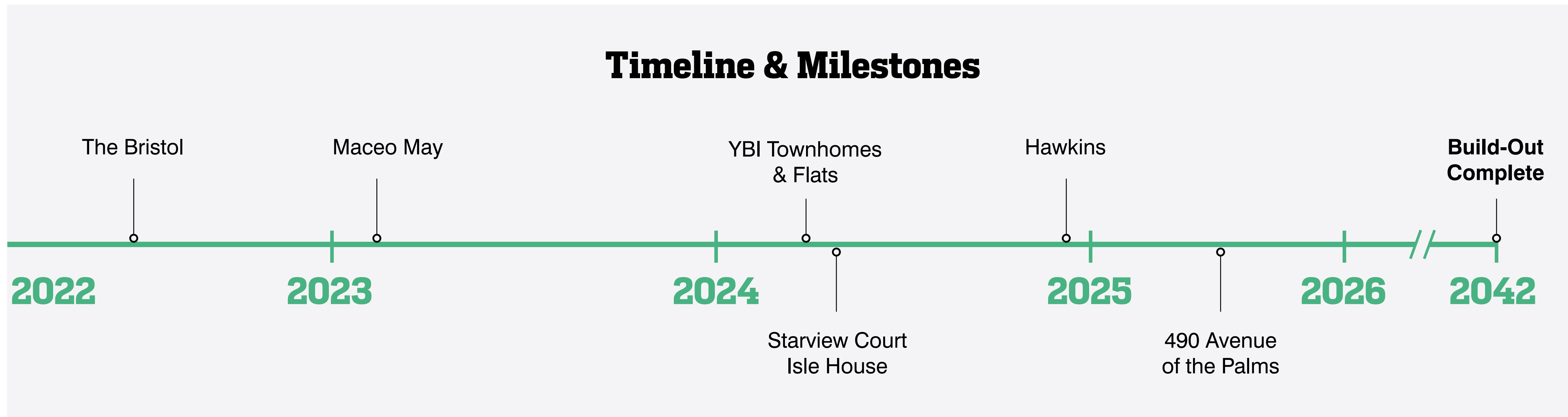
Maceo May

100% Affordable, 105 Apartments, 100% Leased



Starview Court

100% Affordable, 138 Apartments, 100% Leased



490 Avenue of the Palms

148 Condos, Under Construction



Isle House

250 Apartments, Construction Complete, Leasing Units



Hawkins

178 Apartments, Under Construction



Yerba Buena Island Townhomes & Flats

31 Townhomes and Condos, Construction Complete, Leasing Units

Site plans, community overviews, artistic renderings, computer-enhanced or -generated renderings and other depictions of the proposed community, residences, amenities, services, and other features ("Renderings") are preliminary and for illustrative and conceptual purposes only. Renderings are merely an artist's conception and should not be relied upon, as they may not accurately represent the dimensions, condition, location or actual appearance of the item being represented.

Building an Equitable Island Community

In 2024, TIDA introduced a new Equity Program aimed at creating a more inclusive and equitable community on Treasure Island and Yerba Buena Island. This initiative is in collaboration with One Treasure Island. Together, and with the involvement of our island community, we will work to promote sustainable mobility solutions, implement short-term activations, and enhance community engagement. Our ultimate goal is to create a welcoming, healthy, inclusive, and vibrant island community.



Preliminary Program Goals

1

Link Treasure Island with public transportation and city and community services

2

Plan for a diverse, sustainable economy benefiting all residents

3

Build community through programming of open spaces, community facilities and cultural experiences

4

Explore community activations to enhance daily life during the Island transition

5

Identify opportunities for legacy residents in neighborhood planning

Equity Emphasis Areas



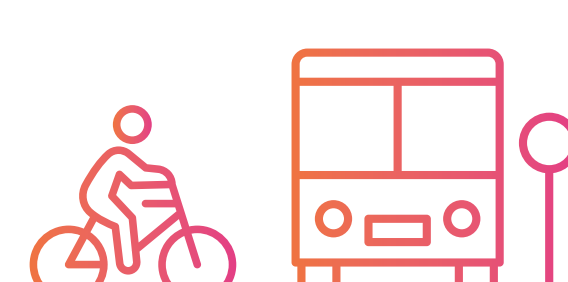
Space Activation



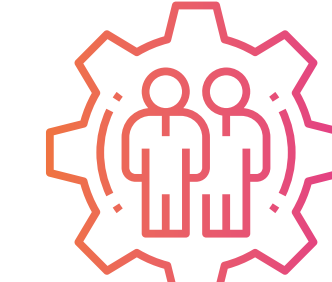
Open Space Programming



Community Facilities Planning and Phasing



Transportation



Equity Analysis



Community Engagement



Exploration of Additional Development



Retail

The Spot at Island Cove Market

In 2023, One Treasure Island, in collaboration with TIDA and Treasure Island Community Development, partnered with local economic development consulting firms to develop a plan for creating more lively and usable community space. This plan centered on promoting mixed-income inclusion, and aimed to be responsive to the realities of our current economic challenges.

Big Move #2

One of the actions in this plan was to create a low-cost set of improvements to establish an informal neighborhood gathering spot next to Island Cove Market. The plan includes adding planters, seating, bike racks, refreshing the building's façade, and exploring the possibility of micro-businesses or maker spaces in the nearby storefronts. The Equity Program is currently in the early stages of project planning, and further community outreach will be conducted to help shape the design.



Place a dot by the images that feels like a good place to relax, sit or eat!



San Francisco Planning

San Francisco County Transportation Authority



TREASURE ISLAND SAN FRANCISCO



TREASURE ISLAND

METROPOLITAN TRANSPORTATION COMMISSION

TREASURE ISLAND COMMUNITY OPEN HOUSE

Treasure Island: The Ups & Downs of Island Living

What are some good things about living on Treasure Island? What works?



Tell us about your community!

Write answers to the questions below on sticky notes.



What concerns or pain points do you have about living on Treasure Island?



San Francisco Planning



TREASURE ISLAND SAN FRANCISCO



TREASURE ISLAND



Large-Scale Infrastructure Improvements



San Francisco Planning

San Francisco County Transportation Authority



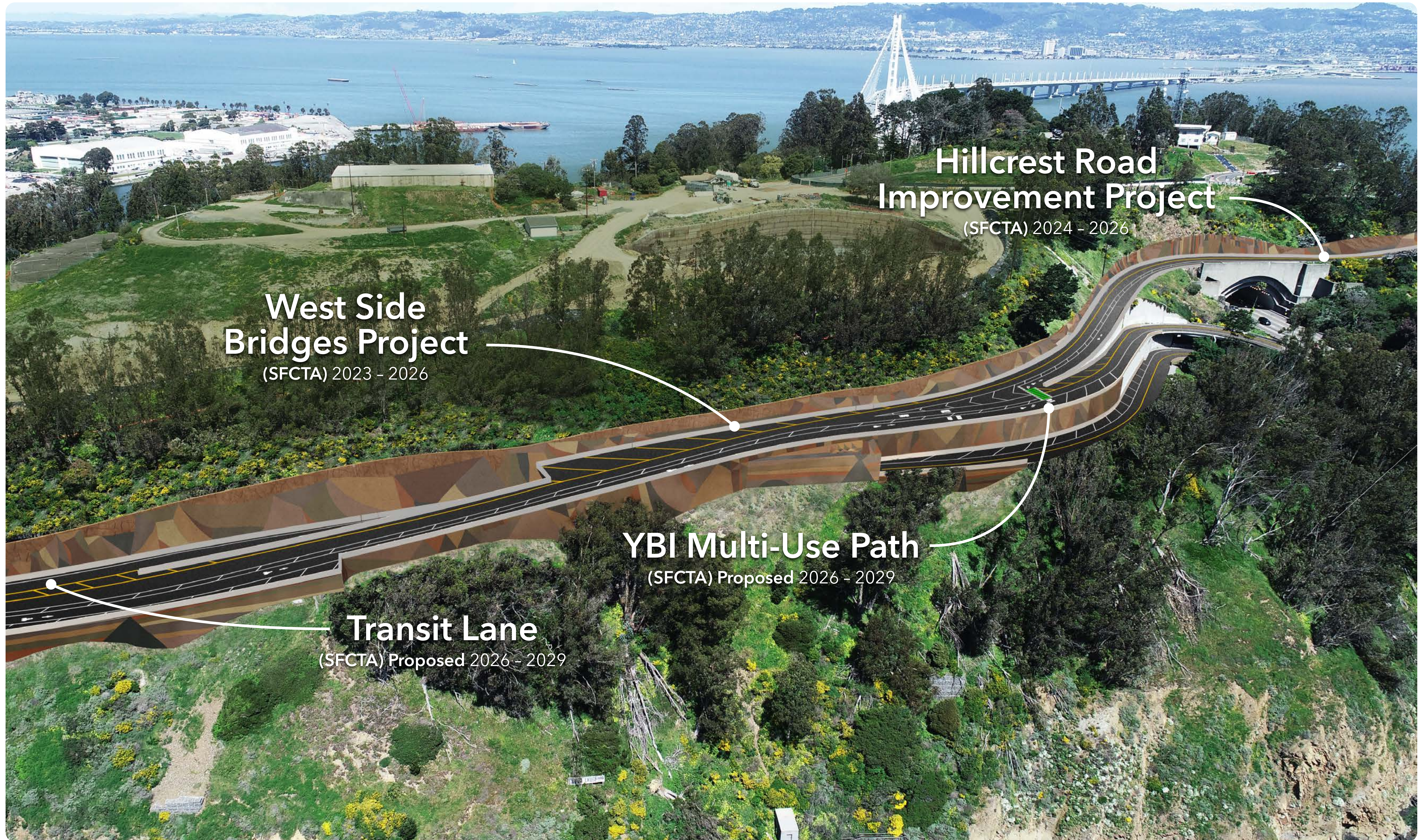
TREASURE ISLAND SAN FRANCISCO



TREASURE ISLAND

METROPOLITAN TRANSPORTATION COMMISSION

Large-Scale Infrastructure Improvements



Hillcrest Road Improvement Project
(SFCTA) 2024 - 2026

West Side Bridges Project
(SFCTA) 2023 - 2026

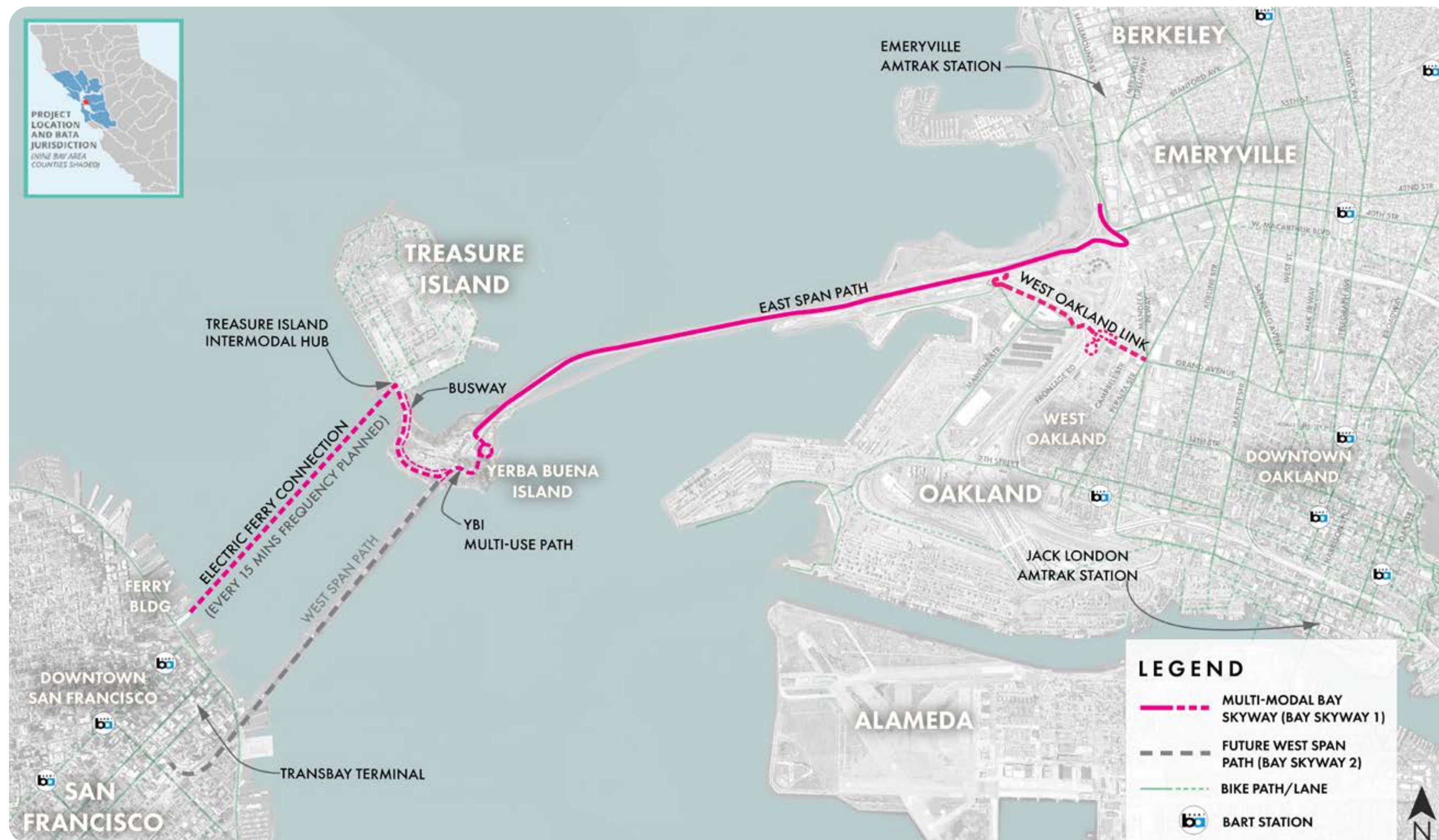
YBI Multi-Use Path
(SFCTA) Proposed 2026 - 2029

Transit Lane
(SFCTA) Proposed 2026 - 2029

Multimodal Bay Skyway

A new way to cross the Bay

The regional Bay Skyway project will provide seamless bicycle and pedestrian access from West Oakland to San Francisco via the east span of the SF-Oakland Bay Bridge and Yerba Buena/Treasure Island Multi-Use Path connecting to a clean (electric) ferry 'bridge' to SF proper (SF Ferry building).



Bay Skyway (Phase 1)

A network of multi-use paths between **West Oakland, Emeryville, and Treasure Island**, with enhanced electric ferry service to downtown SF

Bus-Only Lane

Dedicated bus lane between **Treasure Island and the Bay Bridge West Span**

Bay Skyway (Phase 2)

The ultimate transbay bike/ped path that will allow biking and walking to **downtown San Francisco** on a new West Span pathway



SEGMENT	PROJECTED OPENING YEAR
Phase 1	2028
Phase 2	2033

Project Benefits

- Provides residents of Treasure Island with **improved transit** and **bicycle access** to the East Bay and regional rail such as **BART, Capitol Corridor, and Amtrak**.
- Adds a new **sustainable** and **low-cost** way of travel to the Bay Bridge corridor
- Increases the use of bicycle/e-bike/micromobility while reducing traffic increases



Phase 2 rendering



Photo: Noah Berger

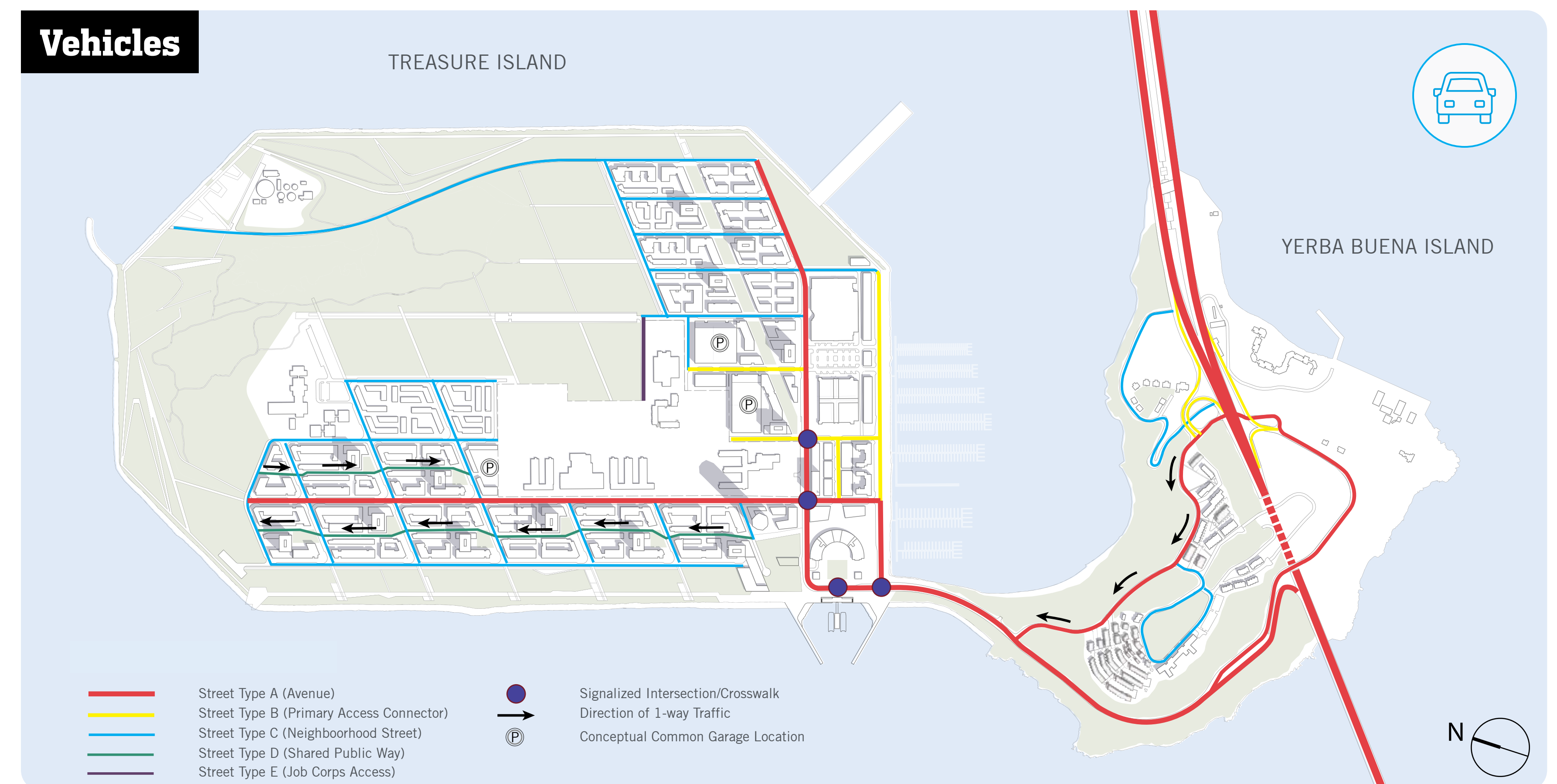
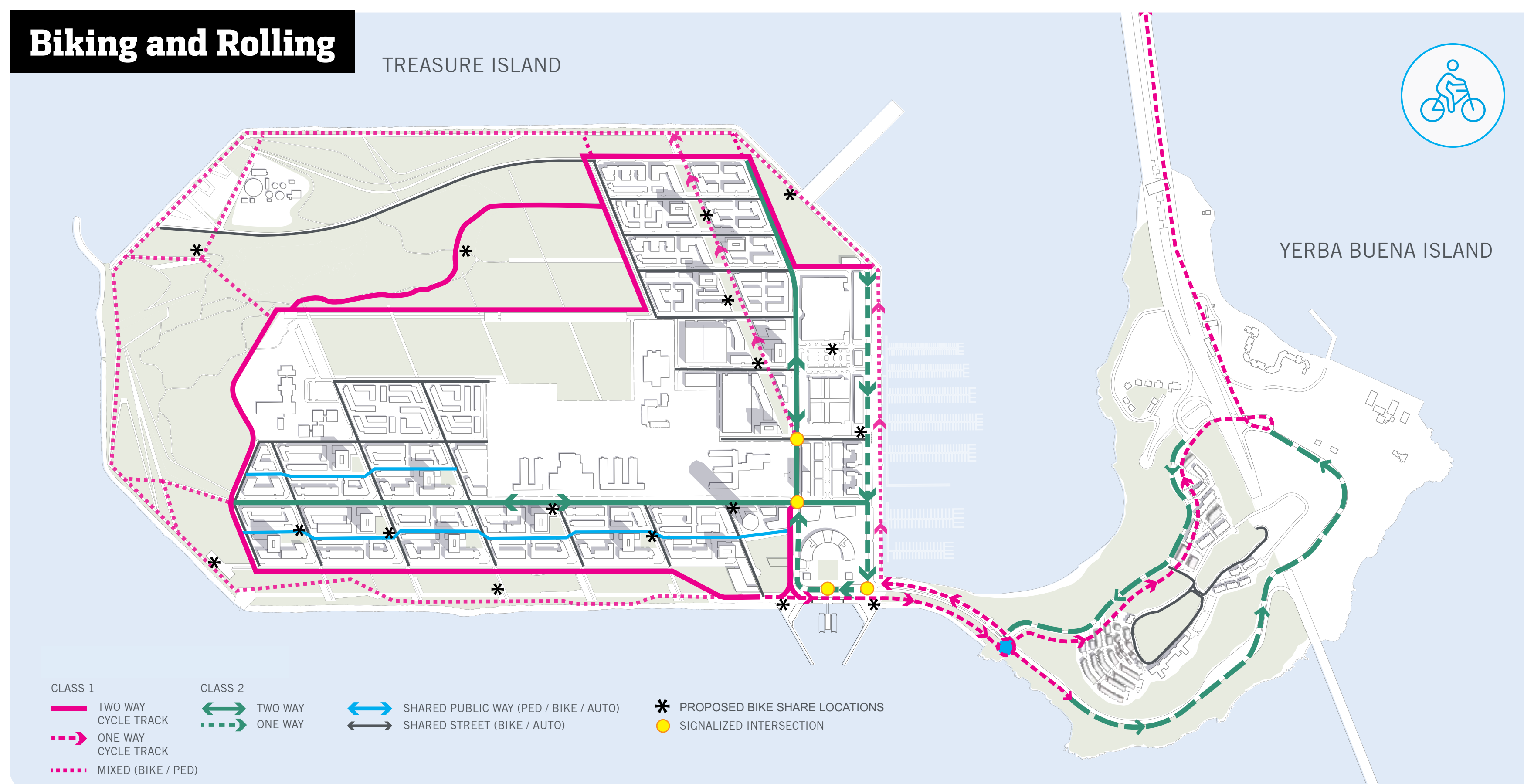
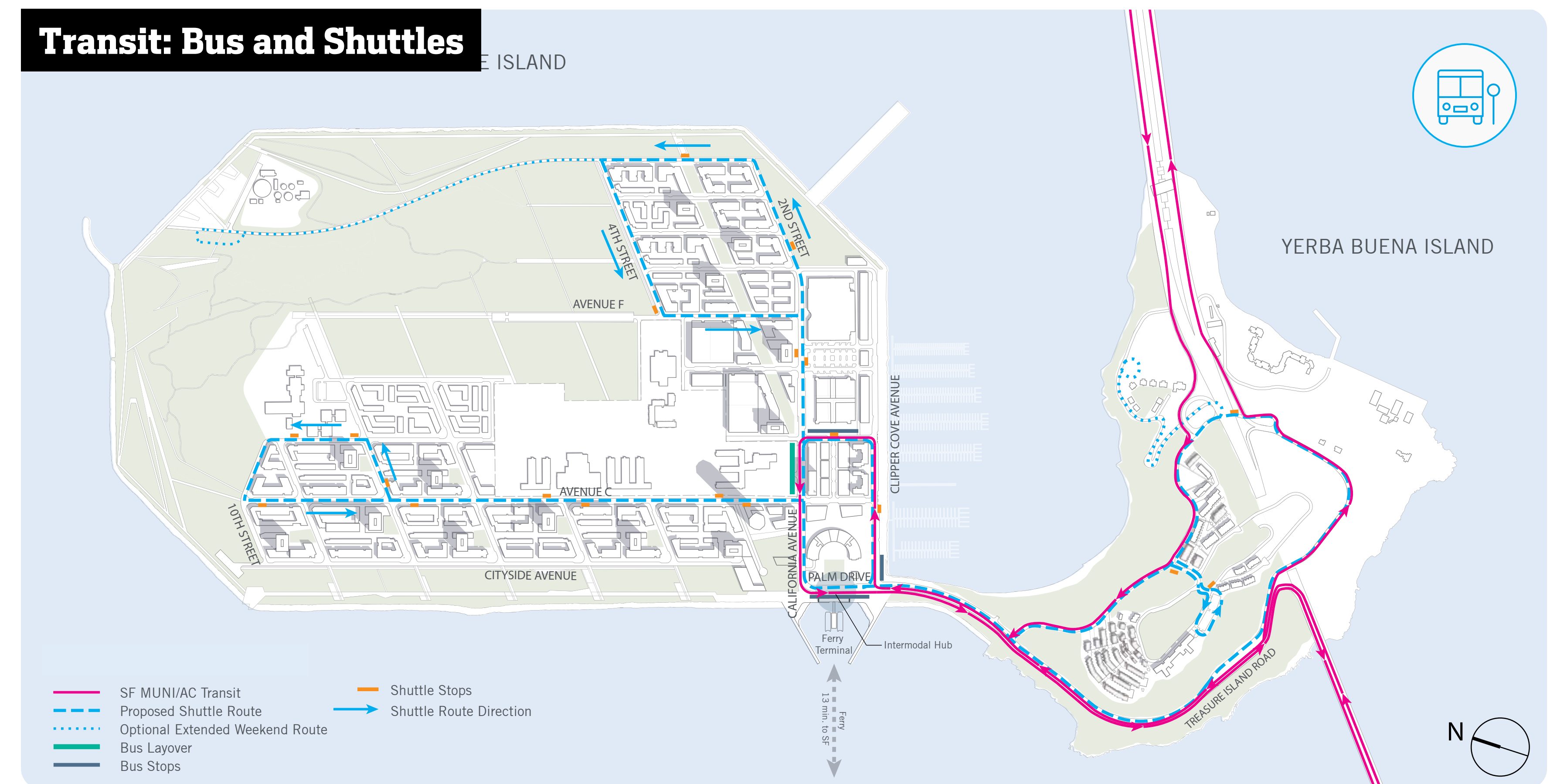
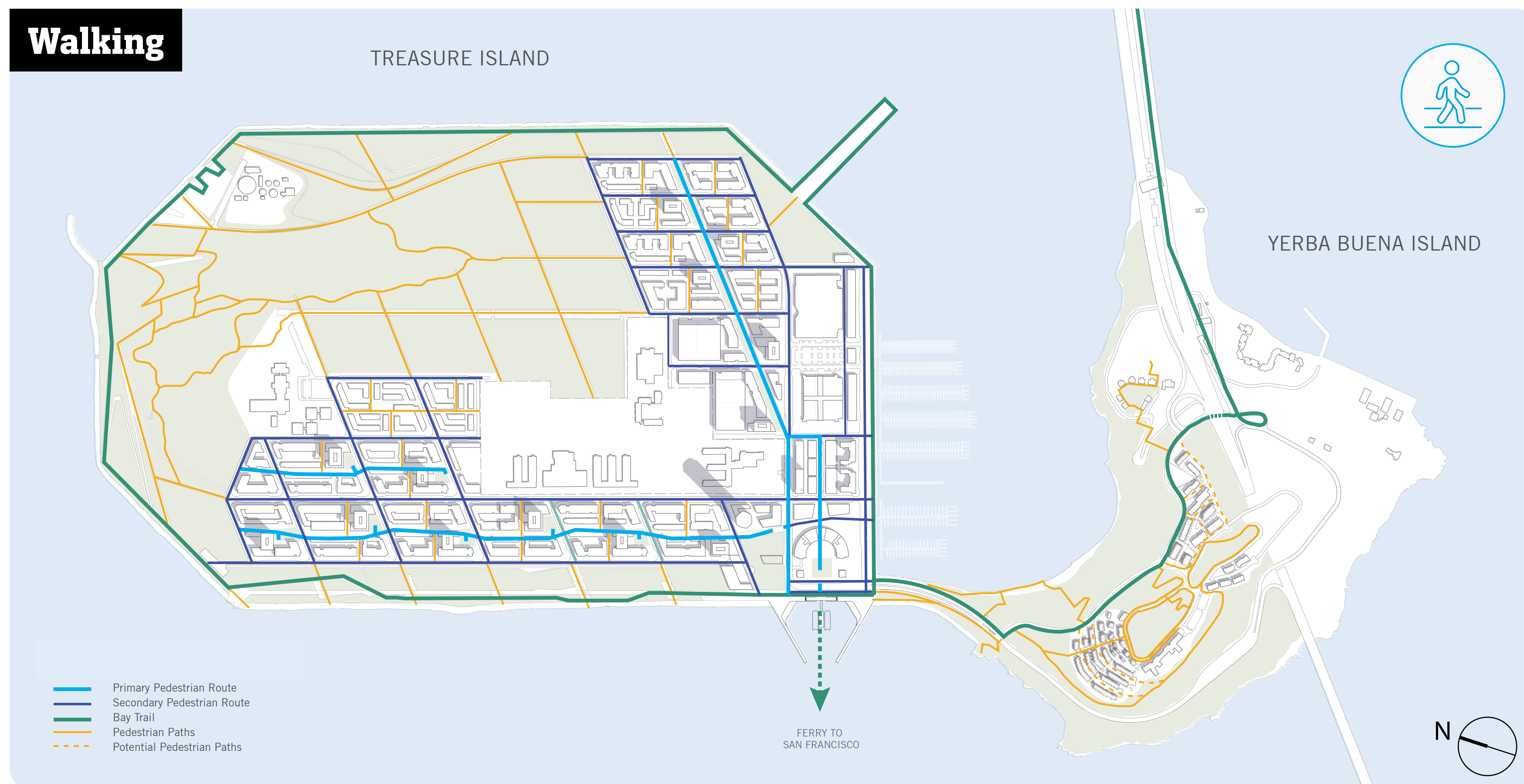


Photo: Noah Berger



Putting People First on Our Island Streets

The street design was a primary focus of the Treasure Island plan and was designed to favor pedestrians over vehicles. Streets are designed to support safe, efficient routes for pedestrians, cyclists, public transport, and private vehicles while also hosting utilities and emergency access. Streets are vital to daily life, offering spaces for interaction, relaxation, and access to the island's parks. Below is an overview of the Streetscape frameworks from the 2015 Treasure Island and Yerba Buena Island Streetscape Masterplan.



Frameworks above are from the 2015 Streetscape Masterplan and are for illustrative and conceptual purposes only.

