

The logo for the San Francisco Arts Commission, featuring the lowercase letters 'sfac' in a white, stylized, sans-serif font on a red square background.

san francisco
arts commission

San Francisco Arts Commission Visual Arts Committee Meeting

September 18, 2024

Item 1: Call to Order, Roll Call, Agenda Changes, Land Acknowledgement

- Call to order
- Roll call / Confirmation of quorum
- Agenda Changes
- Ramaytush Ohlone Land Acknowledgement

Land Acknowledgement

The San Francisco Arts Commission acknowledges that we are on the unceded ancestral homeland of the Ramaytush Ohlone who are the original inhabitants of the San Francisco Peninsula. As the indigenous stewards of this land and in accordance with their traditions, the Ramaytush Ohlone have never ceded, lost nor forgotten their responsibilities as the caretakers of this place, as well as for all peoples who reside in their traditional territory. As guests, we recognize that we benefit from living and working on their traditional homeland. We wish to pay our respects by acknowledging the ancestors, elders and relatives of the Ramaytush Community and by affirming their sovereign rights as First Peoples. As a department dedicated to promoting a diverse and equitable Arts and Culture environment in San Francisco, we are committed to supporting the traditional and contemporary evolution of the American Indian community.



Antone Family (Tohono O'odham), 2019, Photo by Hulleah Tsinhnahjinnie
Left to right: Christine [seated], Melanie, Michelle and Arianna

Item 2: General Public Comment

Discussion

(This item is to allow members of the public to comment generally on matters within the Committee's purview as well as to suggest new agenda items for the committee's consideration.)

Public Comment

Item 2: General Public Comment

Item 3: Consent Calendar

Discussion and Possible Action

Presentation Time: Approximately 3 minutes

***Please see Agenda to review the 19 motions on the consent calendar.*

Public Comment

Item 3: Consent Calendar

Item 3: Consent Calendar

Action

Motion to approve the consent calendar items.

Item 4: Treasure Island – Cityside Park

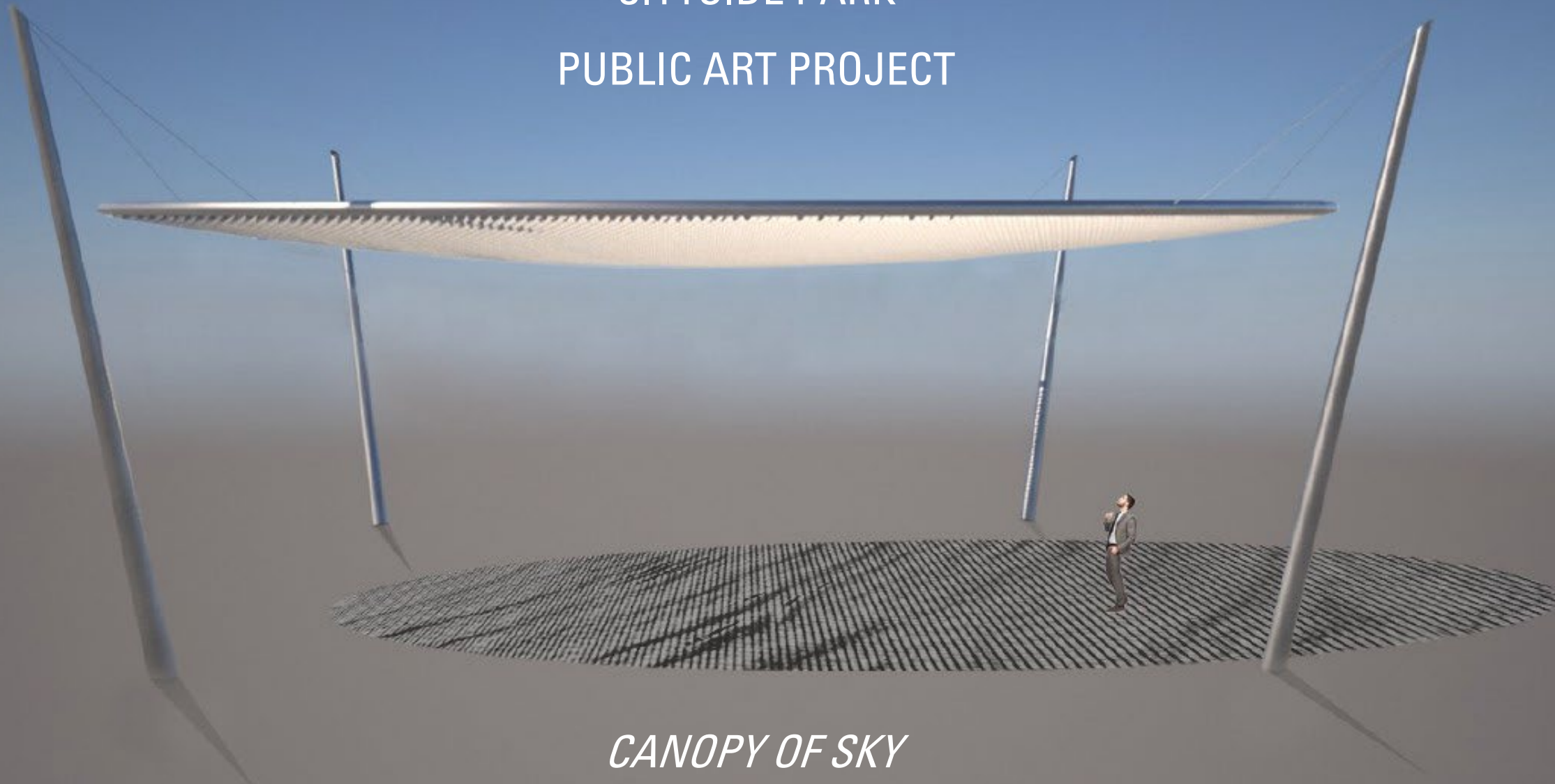
Discussion and Possible Action

Staff Presenter: Director of Public Art Trust and Special Initiatives Jill Manton

Presentation Time: Approximately 7 minutes

Discussion and possible action to authorize the Director of Cultural Affairs to enter into a contract with Ned Kahn Studios for an amount not to exceed \$350,000 for design, fabrication, transportation, and installation consultation of an artwork for the Treasure Island Cityside Park Public Art Project.

CITYSIDE PARK
PUBLIC ART PROJECT



CANOPY OF SKY

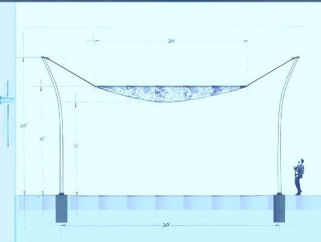
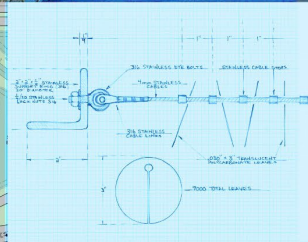
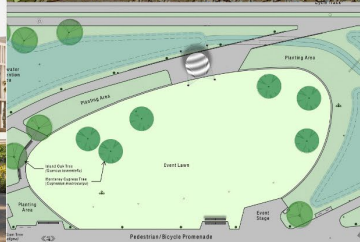
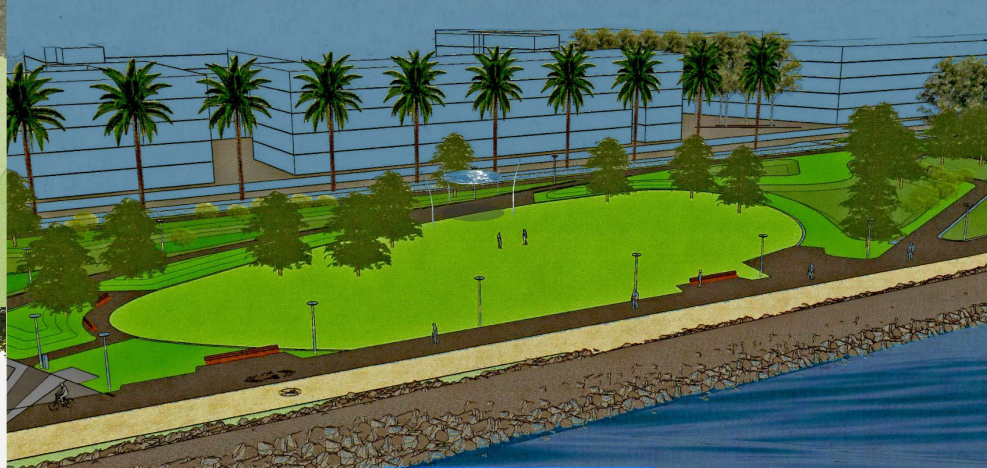
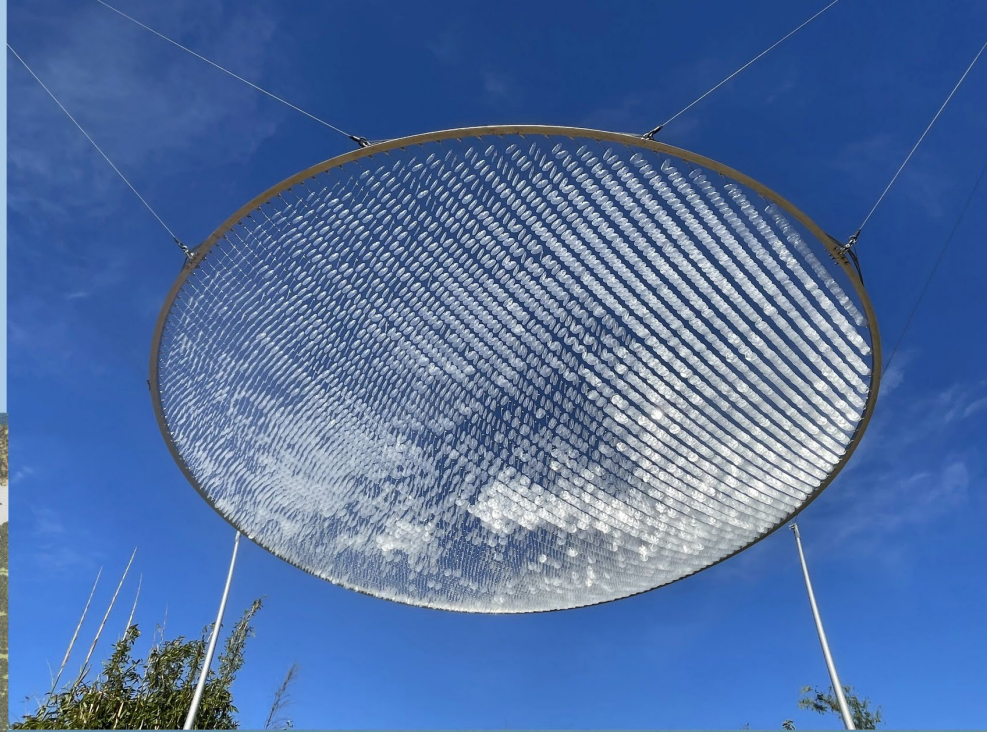
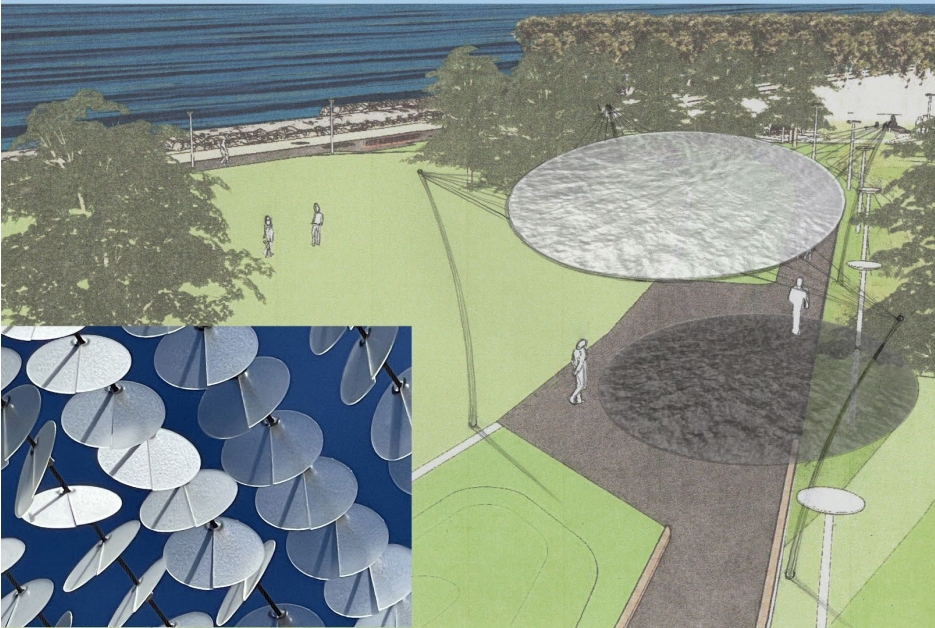
NED KAHN

Canopy of Sky

Proposal for Citywide Park, Treasure Island by Ned Kahn

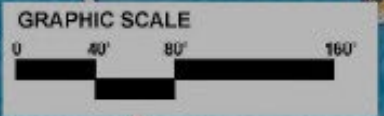
My intent is to create an artwork that opens people up to the magic of the river of ocean air that washes over Treasure Island and hopefully fosters a sense of stewardship towards the delicate envelope of air and water that surround this sphere of rock we call the Earth.

The proposed artwork will consist of a 20' diameter stainless steel ring suspended by cables connected to 4 curved aluminum poles. Stretched across this ring will be hundreds of stainless steel cables populated with 7000 translucent polycarbonate disks that will flutter in the wind like leaves. The translucency of the polycarbonate will capture light and shadow like the droplets of water in fog and clouds. Watching time-lapse video of the fog and clouds allows us to see the constant churning motion, the aliveness of the restless fog. My intent is to create an artwork that is as responsive to its environment, and as fluid, as a passing cloud.





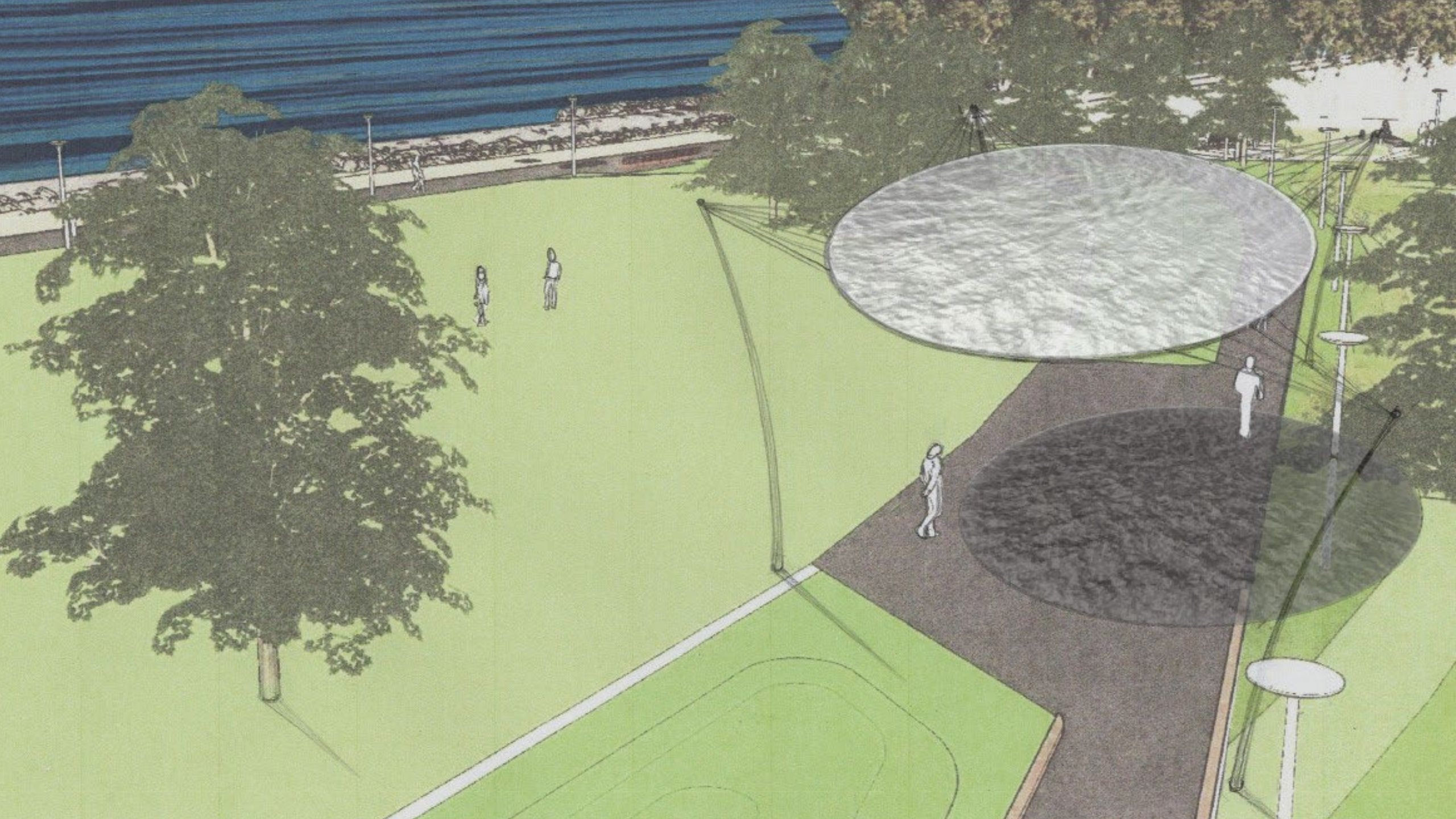
Treasure Island - Cityside Park
Art Location



Treasure Island - Cityside Park

Art Location Context Plan

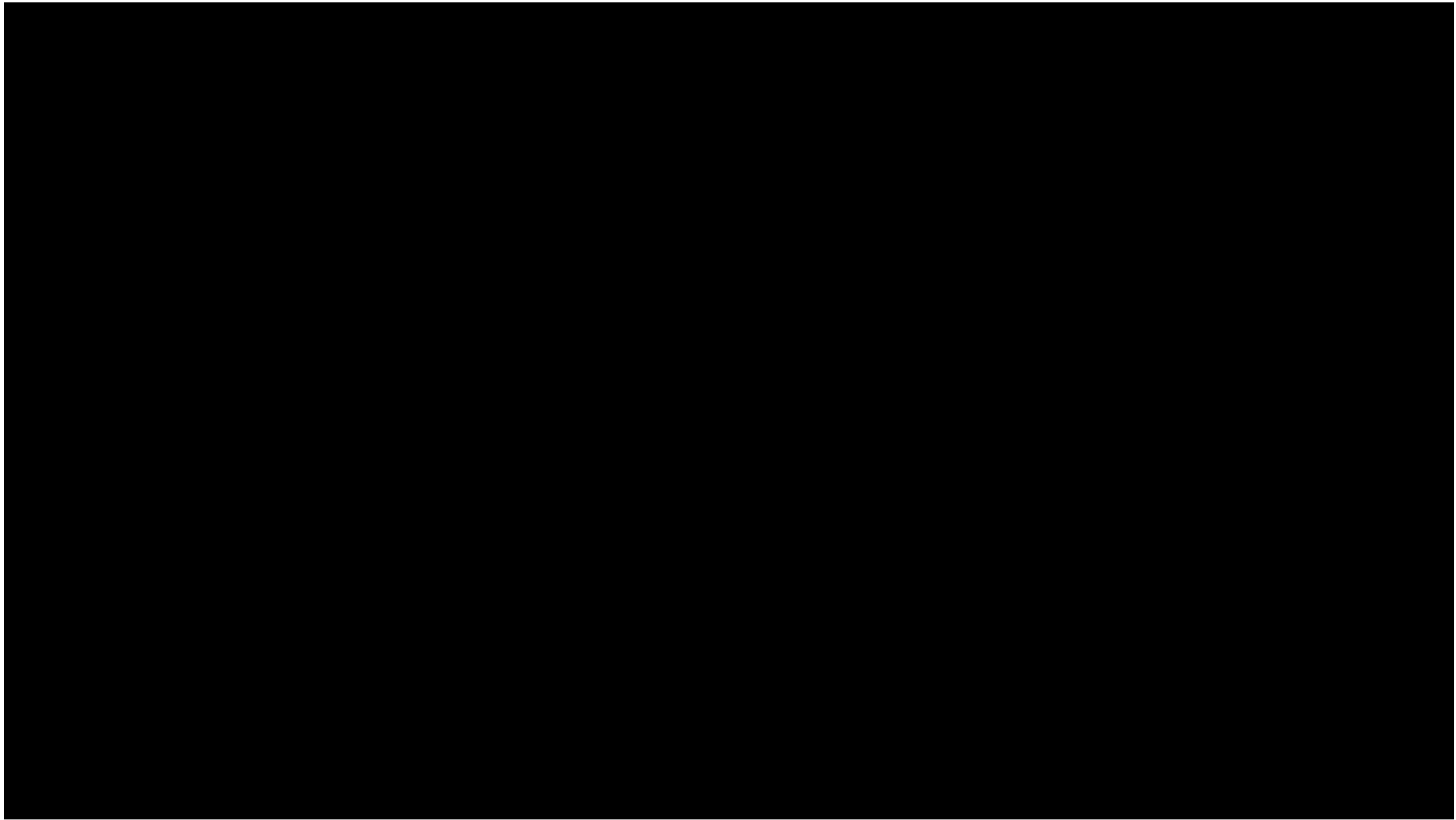


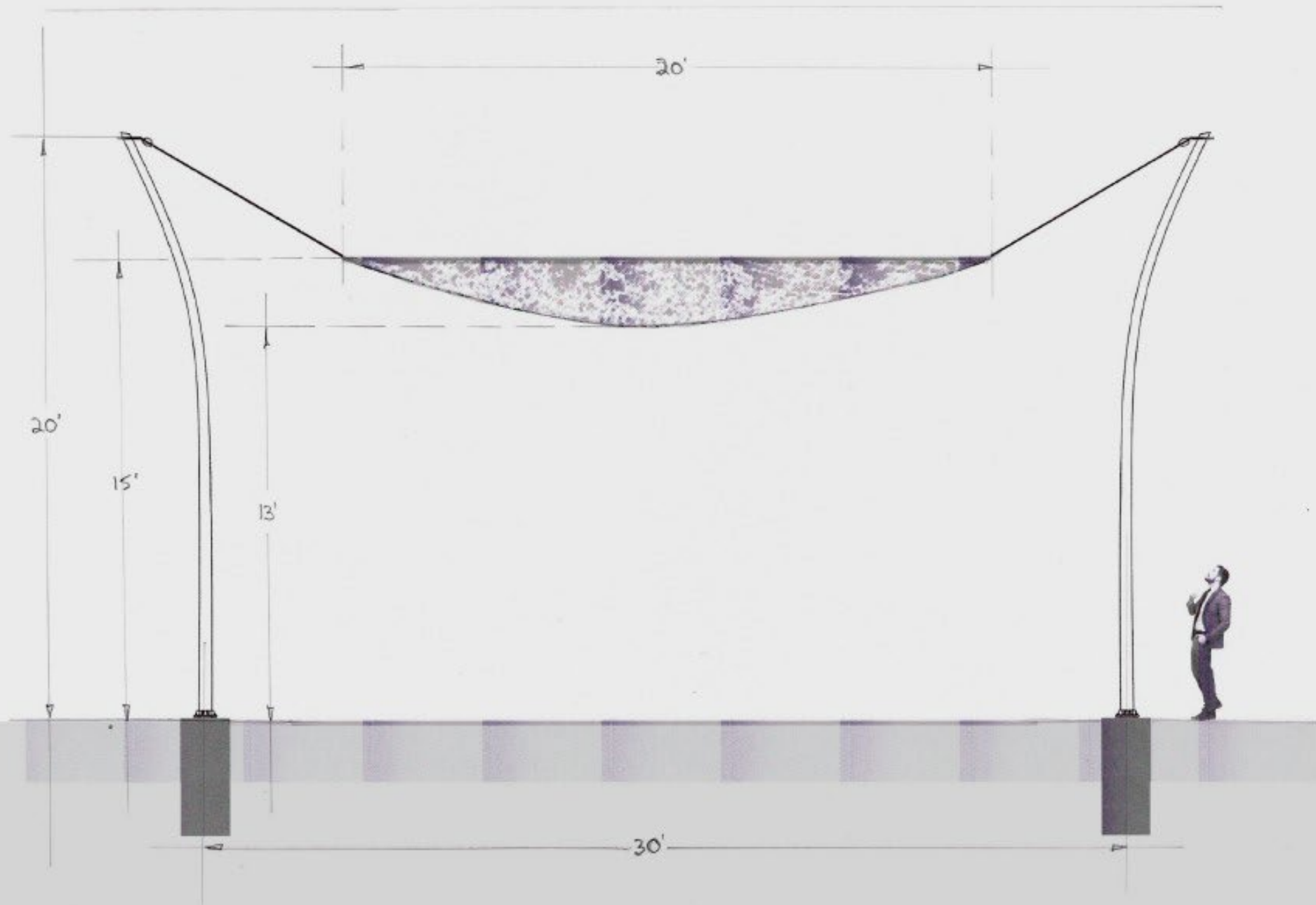


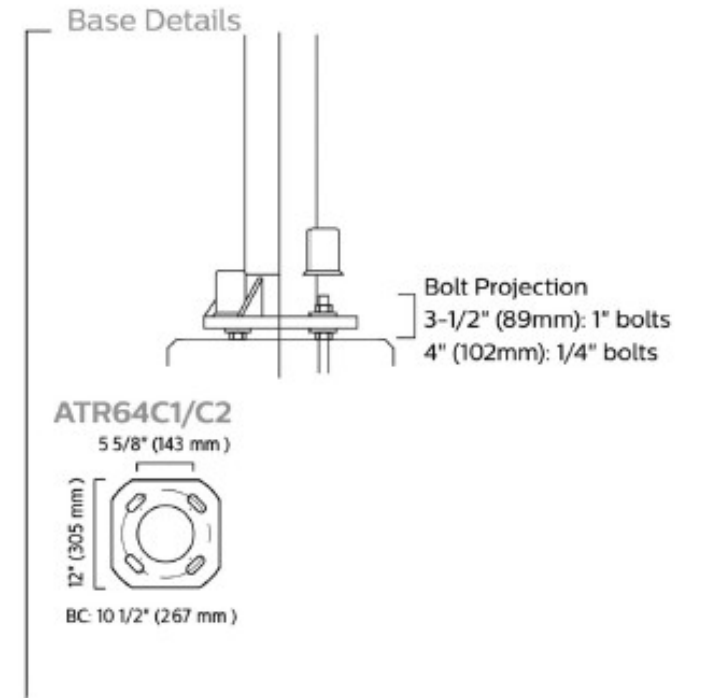
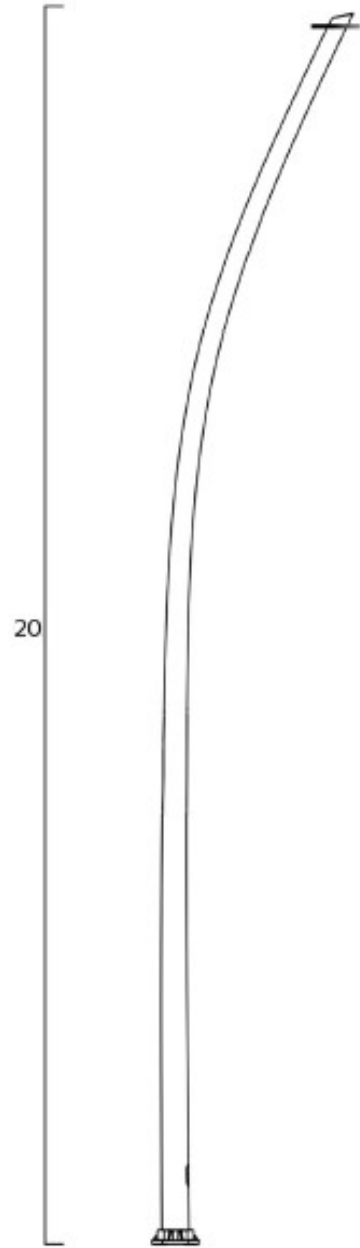
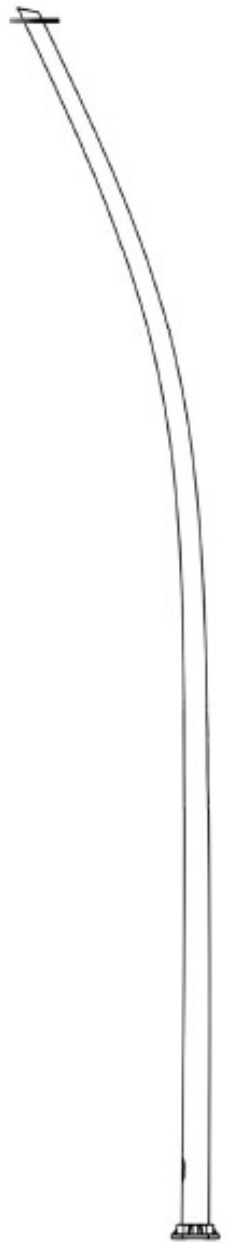


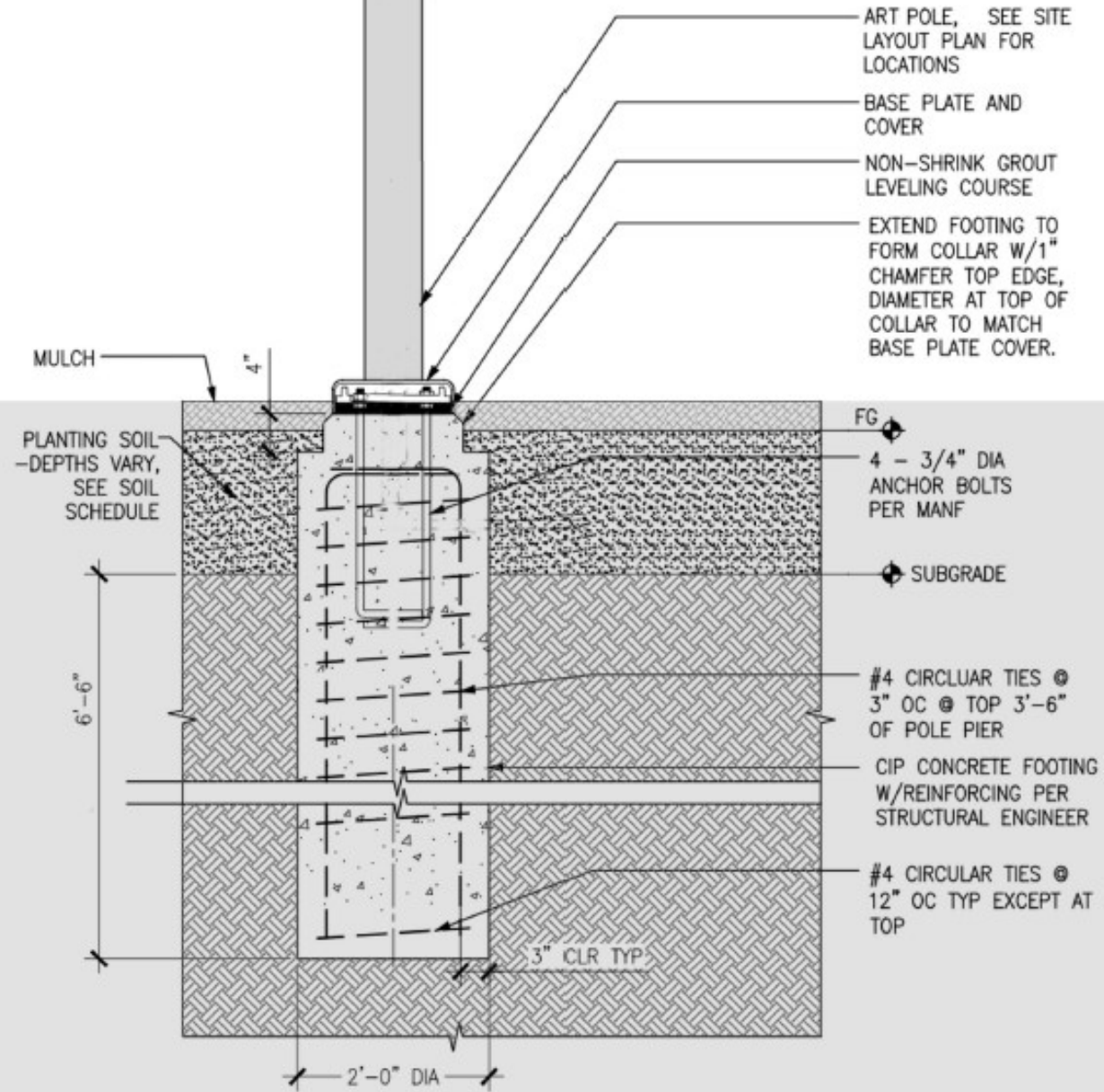




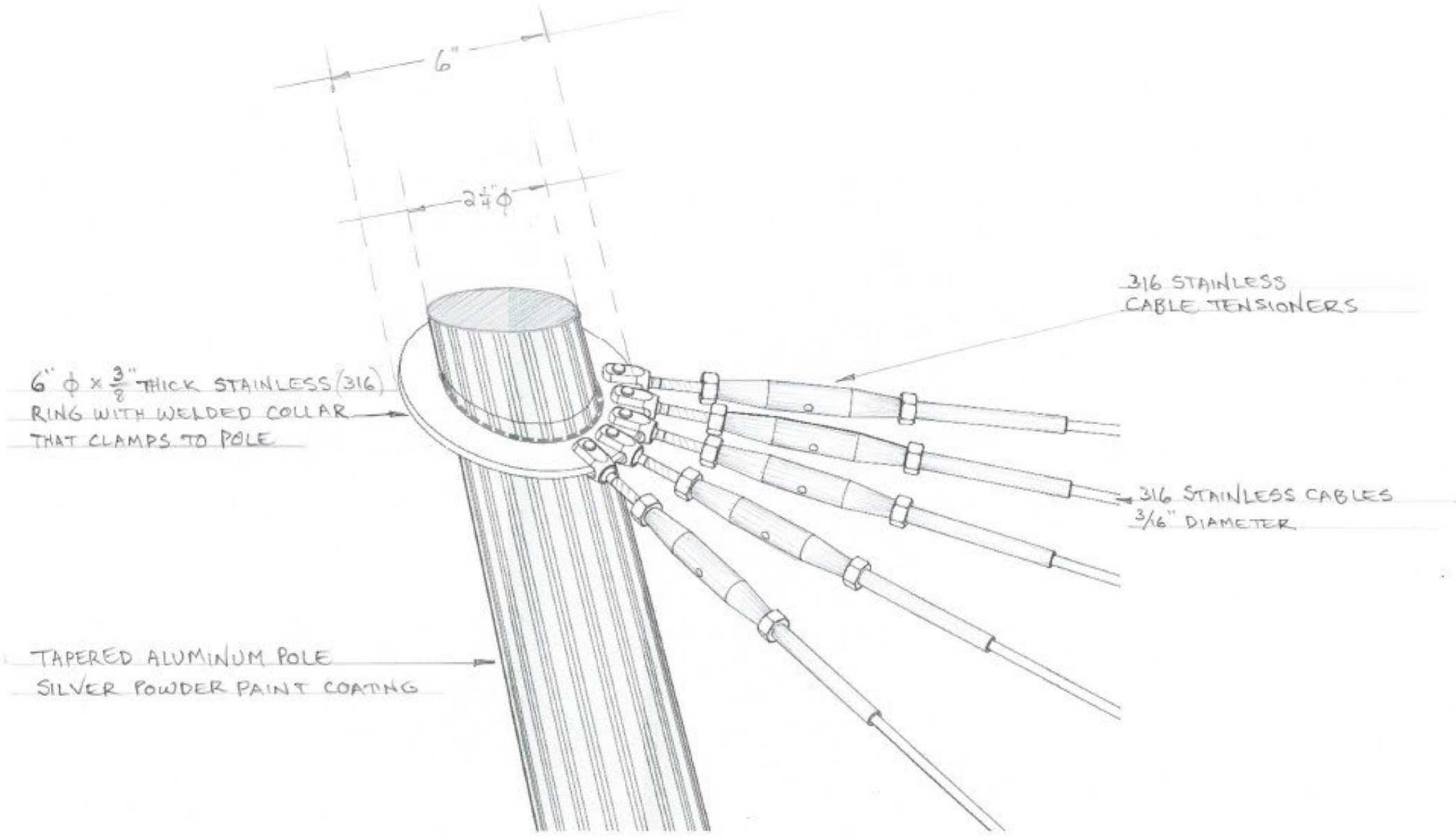








SECTION



6" ϕ x $\frac{3}{8}$ " THICK STAINLESS (316)
RING WITH WELDED COLLAR
THAT CLAMPS TO POLE

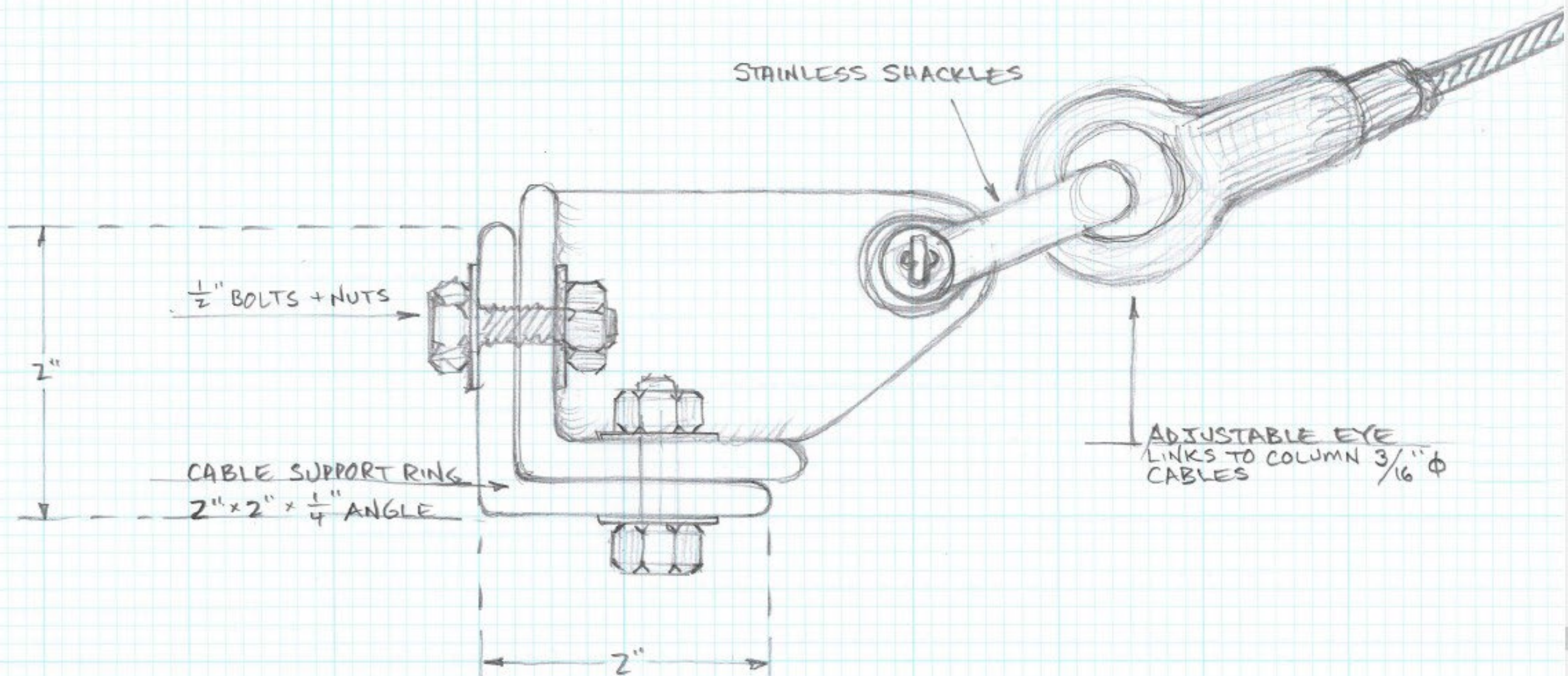
TAPERED ALUMINUM POLE
SILVER POWDER PAINT COATING

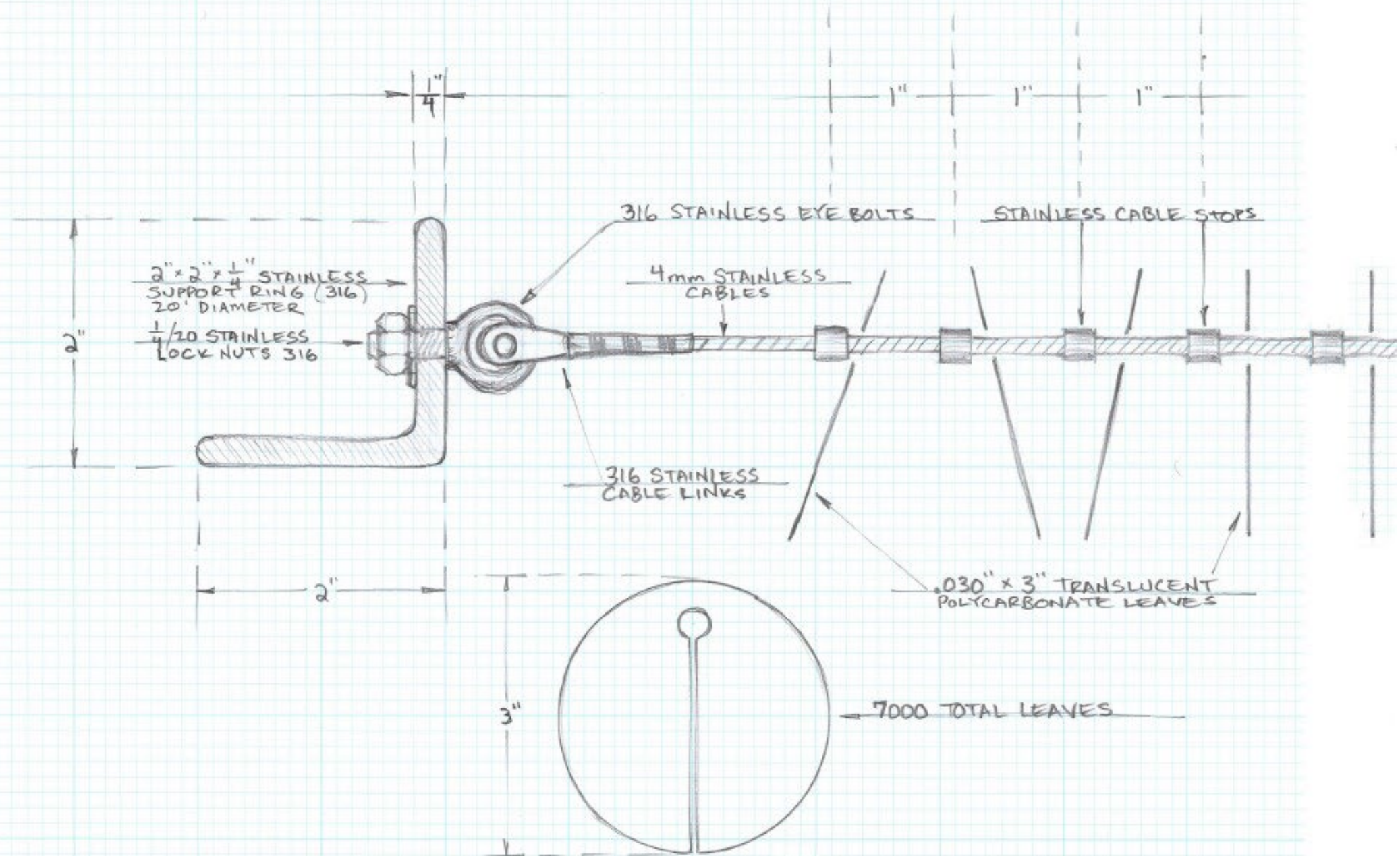
316 STAINLESS
CABLE TENSIONERS

316 STAINLESS CABLES
 $\frac{3}{16}$ " DIAMETER

CABLE CONNECTION DETAIL - TOP OF SUPPORT POLES

ALL PARTS 316 MARINE-GRADE STAINLESS STEEL





2" x 2" x 1/4" STAINLESS
SUPPORT RING (316)
20' DIAMETER
1/20 STAINLESS
LOCK NUTS 316

316 STAINLESS EYE BOLTS

STAINLESS CABLE STOPS

4mm STAINLESS
CABLES

316 STAINLESS
CABLE LINKS

.030" x 3" TRANSLUCENT
POLYCARBONATE LEAVES

7000 TOTAL LEAVES



2"

3"

1"

1"

1"

Timeline & Next Steps

May 1, 2023	Site Approval
December 14, 2023 – March 15, 2024	Request for Proposal Period
April 16, 2024	Qualification Panel
May 9, 2024	Selection Panel
June 5, 2024	Finalists Orientation
August 21, 2024	Final Selection Panel
September 11, 2024	TIDA approval of recommended finalist
October 7, 2024	Motion presented to Arts Commission to enter into contract with approved artist.
November/December, 2024	Artist enters into contract with Arts Commission

Public Comment

Item 4: Treasure Island - Cityside Park

Item 4: Treasure Island – Cityside Park

Action

Motion to authorize the Director of Cultural Affairs to enter into a contract with Ned Kahn Studios for an amount not to exceed \$350,000 for design, fabrication, transportation, and installation consultation of an artwork for the Treasure Island Cityside Park Public Art Project.

Item 5: 2024 Art on Market Street Poster Series

Discussion and Possible Action

Staff Presenter: Program Associate Craig Corpora

Presentation Time: Approximately 5 minutes

Discussion and possible action to approve the conceptual proposal by Marcelo Potosi for the 2024 Art on Market Street Poster Series

Marcelo Potosí



-NATIVE-



THIS IS

INDIGENOUS
LAND



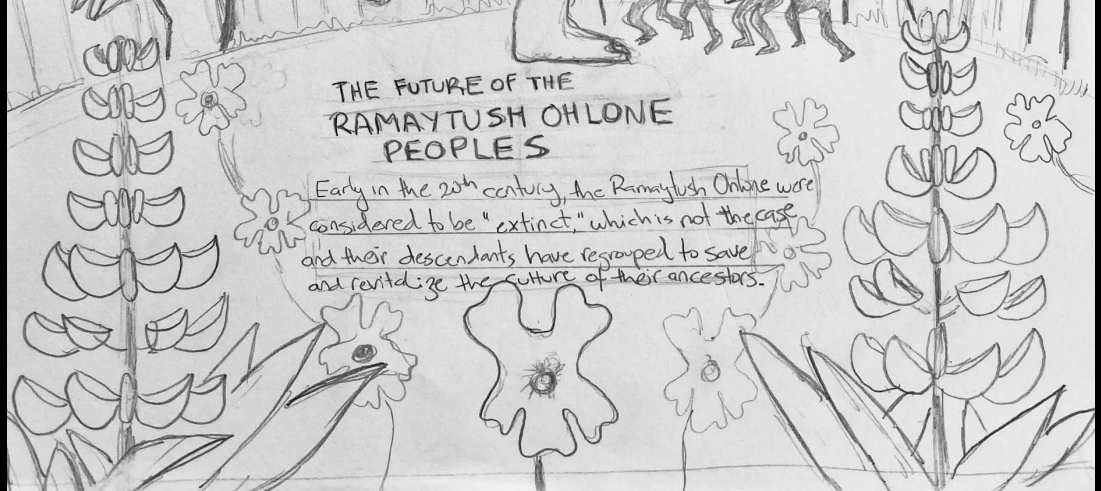
The Future of the Ramaytush Ohlone

REVITALIZING THE CULTURE



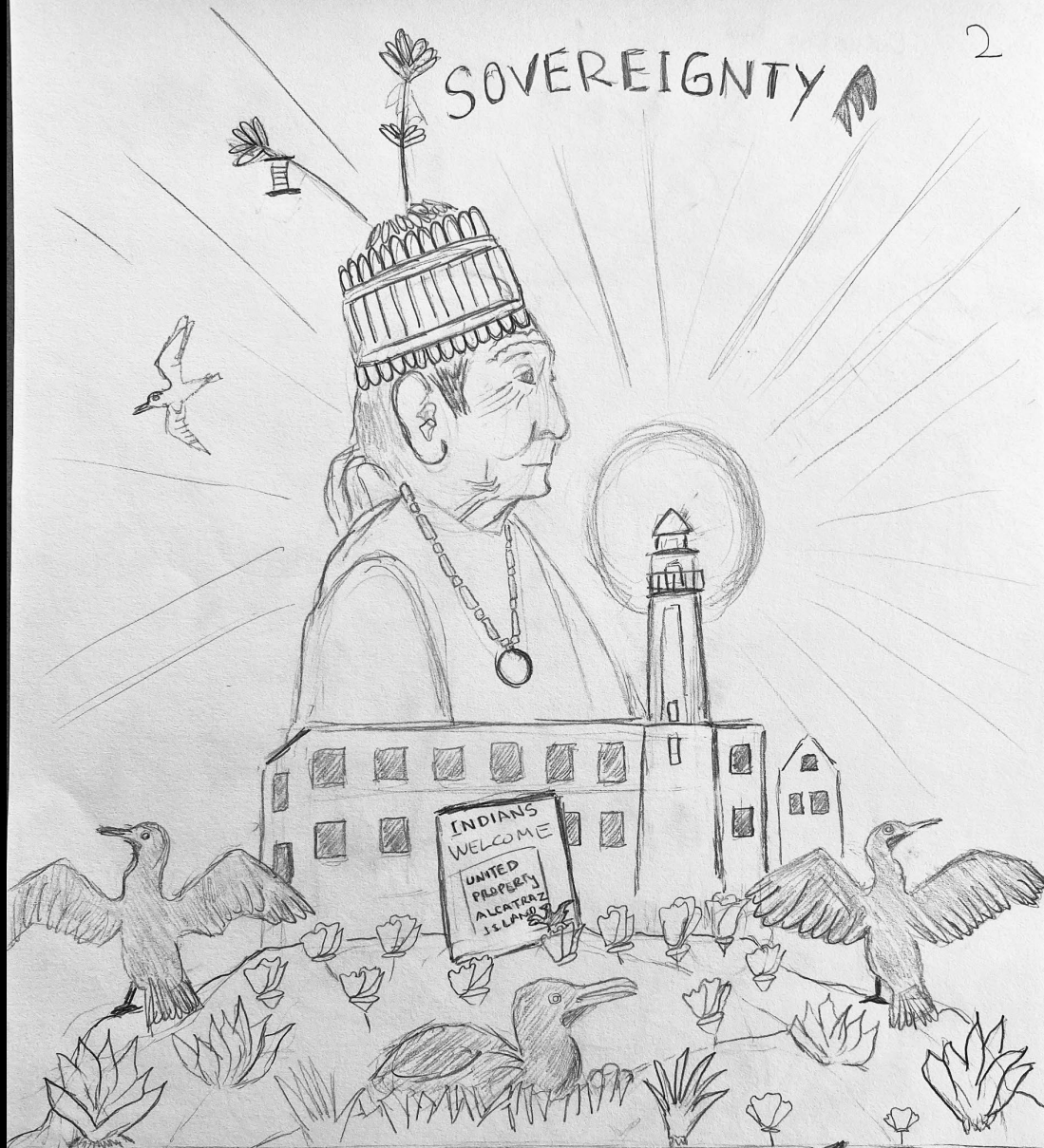
THE FUTURE OF THE RAMAYTUSH OHLONE PEOPLES

Early in the 20th century, the Ramaytush Ohlone were considered to be "extinct," which is not the case, and their descendants have regrouped to save and revitalize the culture of their ancestors.



SOVEREIGNTY

2



THE FUTURE OF THE
RAMAYTUSH OHLONE
PEOPLES

The Ramaytush Ohlone are the original peoples of the San Francisco peninsula, and cultural continuance and recognition of sovereignty, including the rights of First Peoples, are important for their growth.







Public Comment

Item 5: 2024 Art on Market Street Poster Series

Item 5: 2024 Art on Market Street Poster Series

Action

Motion to approve the conceptual proposal by Marcelo Potosi for the 2024 Art on Market Street Poster Series.

Item 6: Potrero Yard Modernization Project— 17th Street Bus Ramp

Discussion and Possible Action

Presenter: Senior Program Manager Jackie von Treskow

Presentation Time: Approximately 7 minutes

Discussion and possible action to approve artist team Twin Walls Mural Company LLC and proposal *Muni in Motion* for the Potrero Yard Modernization Project 17th Street Bus Ramp integrated glass artwork opportunity, as recommended by the artist review panel.

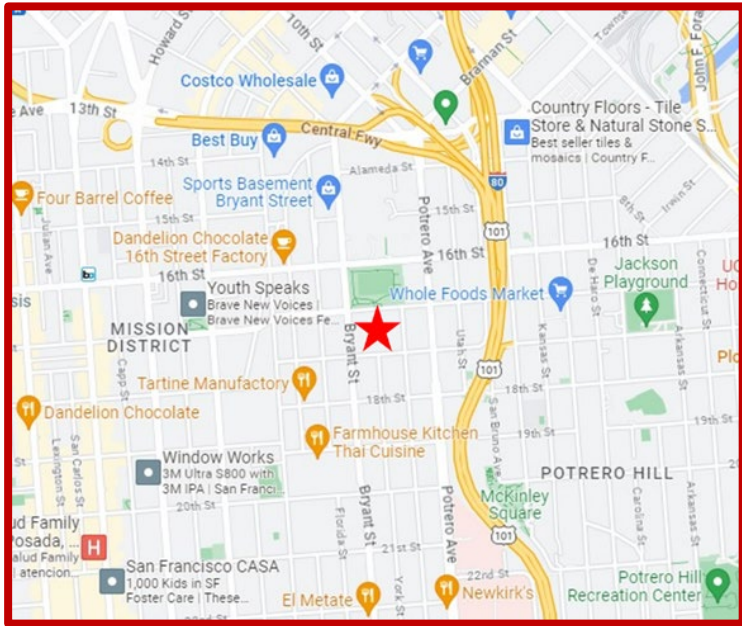
Discussion and possible action to authorize the Director of Cultural Affairs to enter into a contract with Twin Walls Mural Company LLC for an amount not to exceed \$70,000 for the design and consultation during fabrication and installation of an integrated glass artwork for the Potrero Yard Modernization Project 17th Street Bus Ramp.

Potrero Yard Modernization Public Art Project
17th Street Bus Ramp Integrated Glass Artwork
Recommended Artist + Proposal
Visual Arts Committee | September 18, 2024





The **Potrero Yard Modernization Project** will replace an obsolete, century-old bus yard with a modern, three-story, efficient bus maintenance and storage facility, equipped to serve the San Francisco Municipal Transit Agency's (MTA) growing fleet as it transitions to electric buses.





The project's lead developer is the **Potrero Neighborhood Collective (PNC)**.

- Plenary Americas US Holdings Inc
- Mission Economic Development Agency (MEDA), Young Community Developers (YCD)
- Tabernacle Community Development Corporation (TCDC).
- Arcadis IBI Group
- Y.A. Studio
- Plant Construction Company, L.P.
- The Allen Group
- WT Partnership

The **Potrero Yard Neighborhood Working Group** brings together community members to work with SFMTA staff and the PNC developer team to shape public outreach, weigh in on elements of the project design, and inform the design and program of joint development (housing above the yard).

<https://www.sfmta.com/committees/potrero-yard-neighborhood-working-group>





View of Bus Yard from Mariposa at Hampshire Street



Image of Current Potrero Bus Yard



Rendering of New Potrero Bus Yard (PNC Schematic Design)



Potrero Yard Public Art Project Goals

- Illuminate and celebrate the people, history and diverse cultures of the Potrero Hill and Mission neighborhoods, and adjacent American Indian and Calle 24 Latino and Cultural Districts.
- Highlight SFMTA's mission to promote environmental stewardship and provide reliable, safe, and affordable transportation for all.



17th Street between Hampshire and Bryant Streets

Potrero Yard Modernization Project Public Art Opportunities

1. Architecturally integrated glass artwork on the bus ramp on 17th Street, facing Franklin Square.
2. Architecturally integrated glass artwork on a multi-story stairwell located on Mariposa Street at York Street.
3. Large-scale tile artwork on the corner of 17th and Bryant Streets



HAMPSHIRE STREET

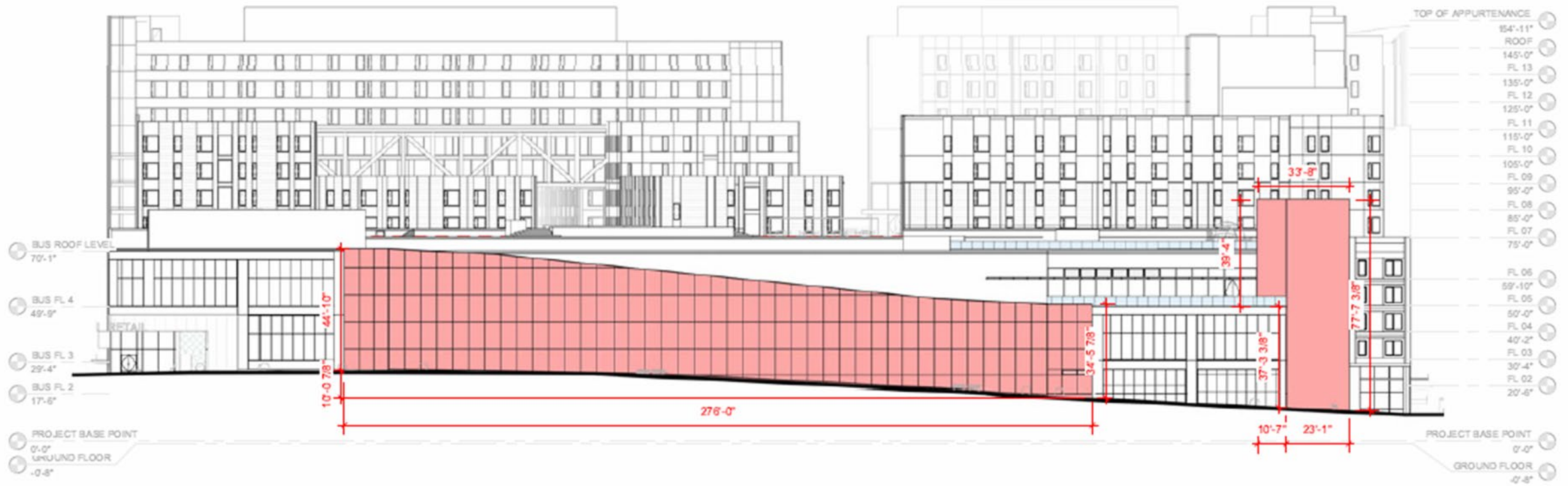
PERSPECTIVE



17TH STREET

PERSPECTIVE





2 NORTH ELEVATION ART
 SK-23 Scale: 1/32" = 1'-0"



Potrero Yard Modernization Project Art Enrichment Budget

Art	\$ 2,809,285	(70%)
Administration	\$ 802,653	(20%)
Conservation	\$ 401,326	(10%)
ART ENRICHMENT TOTAL	\$ 4,013,264	

Artist Selection	\$ 42,950	
Site Work/Preparation	\$ 200,000	
Field Expenses	\$ 2,000	
Photography + Signage	\$ 9,000	
Internal Contingency	\$ 275,335	
SUBTOTAL ART EXPENSES	\$ 364,000	

TOTAL ARTWORK BUDGET **\$ 2,280,000**

- | | | | |
|----|---|-----------|--|
| 1. | Tile Artwork | \$740,000 | |
| | <i>Inclusive of all artist's fees, as well as associated expenses for artwork design, fabrication, insurance, transportation, and installation.</i> | | |
- | | | | |
|----|--|-------------|--|
| 2. | Glass Artwork #1 (Bus Ramp)* | \$1,130,000 | |
| | Artist Contract | \$70,000 | |
| | <i>Design only, and is inclusive of all artist's fees, as well as associated expenses for design and consultation during fabrication and installation.</i> | | |
- | | | | |
|----|--|-----------|--|
| 3. | Glass Artwork #2 (Stairwell)* | \$410,000 | |
| | Artist Contract | \$40,000 | |
| | <i>Design only, and is inclusive of all artist's fees, as well as associated expenses for design and consultation during fabrication and installation.</i> | | |

**An estimated architectural credit of \$121 per square foot will be applied to the glass artwork budget in areas where the artwork replaces the existing architectural glass, with fabrication and installation to be procured outside of artists' contracts and covered by the Capital Improvement Project budget.*

Artist Qualification Panel met in February to review **225 RFQ applications** to develop a short list of 31 applicants deemed most qualified for the glass artwork opportunities.

Artist Review Panel One met on March 11 to identify **(4) finalists for each glass artwork opportunity** who were invited to develop site-specific conceptual proposals for the project.

Artist Finalist Orientation Meeting was held at the Potrero Yard on March 25.

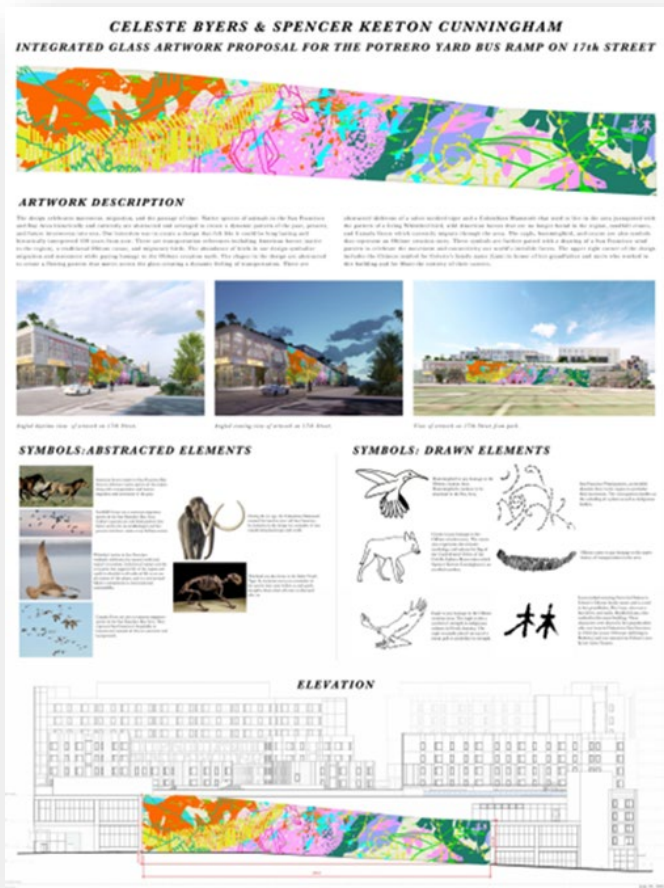


ATTENDEES:

Celeste Byers and Spencer Keeton Cunningham, Artist Team
Chris Jauregui, Vice President, Plenary Americas
Christopher Burch, Artist
Elaine Chu and Marina Perez (Twin Walls Mural Company), Artist Team
Jackie von Treskow, Senior Public Art Program Manager, San Francisco Arts Commission
Jet Martinez, Artist
John Angelico, Public Information Officer, San Francisco Municipal Transportation Agency
Jolene Yee, Friends of Franklin Square Park, Potrero Yard Neighborhood Working Group
Josue Rojas, Artist
Juana Alicia Araiza, Artist
Kathleen Crocetti and Juan R. Fuentes, Artist Team
Kerstin Magary, Section Director and Deputy Program Manager, San Francisco Municipal Transportation Agency
Mary Travis-Allen, American Indian Cultural District, Potrero Yard Neighborhood Working Group
Susan Cervantes (Precita Eyes Muralists), Artist
Tim Kempf, Senior Project Manager, Department of Public Works
Tony Gill, Architect, Arcadis IBI Group

SCHEDULE:

- 10:00 – 10:10** INTRODUCTIONS
- 10:10 – 10:30** CLIENT: SFMTA and Project Overview
 - Overview of Agency and Services
 - Sustainability and Climate Action Mission
 - Current and Future Potrero Yard
- 10:30 – 10:50** SITE: Surrounding Neighborhoods + Cultural Districts
 - Potrero Hill and the Mission
 - American Indian and Calle 24 Latino Cultural Districts
 - Franklin Square
- 10:50 – 11:15** PROJECT: Potrero Yard Modernization Project
 - Project Stakeholders + Community Engagement
 - Potrero Neighborhood Collective
 - Potrero Neighborhood Working Group
 - Current Bus Yard Design and Next Phase(s)
 - Current Project Schedule
- 11:15 – 11:40** PUBLIC ART
 - Public Art Project Goals and Criteria
 - Budget and Timeline
 - Overview of Proposal Process
- 11:45 – 12:00** DISCUSSION / Q&A
- 12:00 – 12:30** TOUR of Potrero Yard



Celeste Byers & Spencer Keeton Cunningham
Migration



Precita Eyes Muralists Association
We Move the City



Twin Walls Mural Company
Muni in Motion

SHARE YOUR FEEDBACK!

**POTRERO YARD
MODERNIZATION
PUBLIC ART PROJECT**

**DEADLINE TO SUBMIT PUBLIC COMMENT:
August 19, 2024 by 5:00 PM**

sfac san francisco
arts commission

SFMTA



Liked by midwesterror and 45 others

sf_arts_commission We want to hear from you! The San Francisco Arts Commission is seeking feedback for TWO new public art installations at the Potrero Yard Modernization... more

View all 3 comments

6 days ago

Reimagine Potrero Yard



Comment on glass artwork proposals on the 17th Street bus ramp:
Comparta sus comentarios sobre propuestas de obras de arte en vidrio para la rampa de autobuses en 17th Street:
SFArtsCommission.org/PotreroYardBusRampProposals
August 5 – August 19, 2024
5 de agosto – 19 de agosto de 2024

Reimagina el Potrero Yard

Stairwell on Mariposa Street
La escalera en Mariposa Street



Christopher Burch
Monday on the 48
Lunes en el 48



José Rojas
A Transfer to Tomorrow
Un transbordo a mañana



Juan R. Fuentes
Mariposas en la Misión



Jet Martinez
Hogar

Comment on the artwork proposals for the stairwell on Mariposa Street:
Comparta comentarios sobre las propuestas de obras de arte en la escalera en Mariposa St:
SFArtsCommission.org/PotreroYardStairwellProposals
August 5 – August 19, 2024
5 de agosto – 19 de agosto de 2024

We Want To Hear From You

Share your feedback on the glass artwork proposals for the Potrero Yard Modernization Project! The San Francisco Arts Commission (SFAC) is conducting a review process to choose an artist or artist teams for two public art opportunities on the upcoming new Muni bus facility. View images of the artists' conceptual design proposals inside this mailer. Comment by August 19 online.

- Architecturally integrated glass artwork on the 17th Street bus ramp between Hampshire and Bryant streets
SFArtsCommission.org/PotreroYardBusRampProposals
- Architecturally integrated glass artwork on a multi-story stairwell on Mariposa Street at York Street
SFArtsCommission.org/PotreroYardStairwellProposals

The full proposals are on view for public comment from August 5 – August 19 online at the links above and in person at the Potrero Yard at 17th and Bryant streets and at Mariposa and York streets. Comments may also be submitted via email sfacpubliccomment@sfgov.org. For information about the Potrero Yard Modernization Project, visit: SFMTA.com/PotreroYard

Queremos su opinión

¡Comparta sus comentarios sobre las propuestas de obras de arte en vidrio para el Proyecto de Modernización de Potrero Yard! La Comisión de Artes de San Francisco (SFAC) está llevando a cabo un proceso para elegir un artista o equipos de artistas para dos oportunidades de arte público en el próximo nuevo edificio de autobuses Muni.

- Obras de arte en vidrio integradas arquitectónicamente en la rampa de autobuses de la calle 17 entre las calles Hampshire y Bryant:
SFArtsCommission.org/PotreroYardBusRampProposals
- Obras de arte en vidrio integradas arquitectónicamente en una escalera de varios pisos en Mariposa Street and York Street:
SFArtsCommission.org/PotreroYardStairwellProposals

Las propuestas completas están disponibles en línea para comentarios públicos del 5 al 19 de agosto en los enlaces arriba y en persona en Potrero Yard localizado en las calles 17 y Bryant y en las calles Mariposa y York. Los comentarios también pueden enviarse por correo electrónico a sfacpubliccomment@sfgov.org. Para obtener información sobre el Proyecto de Modernización de Potrero Yard, visite: SFMTA.com/PotreroYard



Sue Hepler
870 Market Street #1128
San Francisco, CA 94102



Comment on Public Art Proposals
August 5, 2024 - August 19, 2024

Comenta sobre propuestas de arte público
5 de agosto de 2024 - 19 de agosto de 2024

¡El SFAC busca lenguaje e ideas nuevas! ¡Ayuda a dar forma con el idioma! ¡Escribanos tus ideas, representaciones, representaciones y/o dibujos! ¡Dibujos, dibujos para la web y/o dibujos! ¡94102 Market Street / 94102 Market Street / 94102 Market Street / 94102 Market Street!



Reimagine Potrero Yard
Reimagina el Potrero Yard

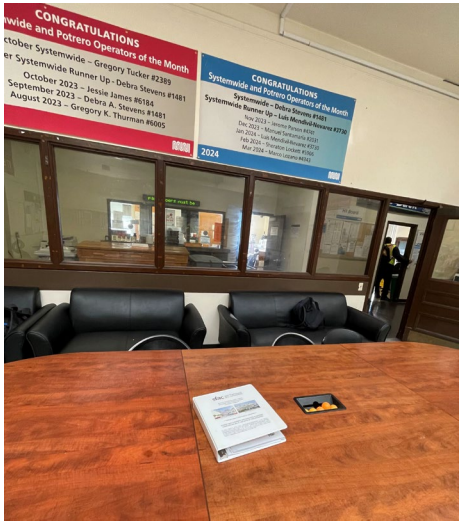
Share your feedback on glass artwork proposals for the Potrero Yard Modernization Project.

Public Comment Period:
August 5, 2024 – August 19, 2024

Comparta sus comentarios sobre propuestas de obras de arte en vidrio para el Proyecto de Modernización de Potrero Yard.

Período de comentarios públicos:
5 de agosto de 2024 – 19 de agosto de 2024







POTRERO YARD MODERNIZATION PROJECT | 17th STREET BUS RAMP
ARTIST REVIEW PANEL TWO SUMMARY

MEETING DATE
August 28, 2024

VOTING SELECTION PANELISTS

Chris Jauregui, Vice President, Plenary Americas (shared vote with Yancey Clayton)
Fátima Ramirez, Executive Director, Acción Latina
John Angelico, Public Information Officer, SFMTA (shared vote with Kerstin Magary)
Jolene Yee, Community Representative, Friends of Franklin Square Park
Kerstin Magary, Deputy Program Manager, SFMTA (shared vote with John Angelico)
Mary Chou, Civic Art Collection and Public Art Director, SFAC
Mary Travis-Allen, Community Representative, American Indian Cultural District
Rhiannon Evans MacFadyen, Curator, Artist, Consultant
Trisha Lagaso Goldberg, Independent Curator
Yancey Clayton, Principal/Associate Director, Arcadis IBI Group (shared vote with Chris Jauregui)

PROCESS

Three artist finalists presented their proposals for the Potrero Yard Modernization 17th Street Bus Ramp Public Art Project. The Artist Review Panel discussed the finalists' proposals and scored each artist on the following criteria (1= low score):

Artistic Merit (1-10)
Relevant Skills and Experience (1-5)
Meets Project and Civic Art Collection Goals (1-10)
Appropriate to Site (1-5)

RESULTS

Twin Walls Mural Company	233
Celeste Byers & Spencer Keeton Cunningham	205
Precita Eyes Muralist Association	203

Artist Review Panel Two Composition

San Francisco Arts Commission

Mary Chou, Director of Public Art Program and Civic Art Collection

SFMTA Representatives

John Angelico, Public Information Officer, Building Progress Program

*Kerstin Magary, Section Director, CSO Facilities and Real Property Management,
Deputy Building Progress Program Manager*

Design Team Representatives

Yancey Clayton, Principal/Associate Director, Arcadis IBI Group

Chris Jauregui, Vice President, Plenary Americas

Arts Professionals

Rhiannon Evans MacFadyen, Curator, Artist, Consultant

Trisha Lagaso Goldberg, Artist and Independent Curator

Fátima Ramirez, Executive Director, Acción Latina

Community Representatives

Mary Travis-Allen, Potrero Neighborhood Working Group, American Indian Cultural District

Jolene Yee, Potrero Neighborhood Working Group, Friends of Franklin Square Park

Twin Walls Mural Company



Twin Walls Mural Company (Elaine Chu and Marina Perez-Wong) is committed to addressing the perspectives of community, from human rights, highlighting injustices through the lens of oppressed people and revealing ancestral traumas to celebrating life through culture and color. Manifesting health, healing and connection, TWMC also encourages environmental stewardship.



MUNI in Motion

An ode to the routes that raised us in our city by the Bay.

TWIN WALLS MURAL COMPANY Elaine Chu and Marina Perez-Wong

Integrated Glass Artwork Proposal for the Potrero Yard Bus Ramp on 17th Street



In our 7x7 universe the city and its modes of transportation have always been reflective of cultural and political changes. Our diversity, our collective struggles and triumphs, the celebrations we share and the care we have for one another are valued in a way unlike any other part of the world. We aim to celebrate this connectivity by illustrating a woven tapestry of people and places throughout time in San Francisco, starting at Potrero Division.

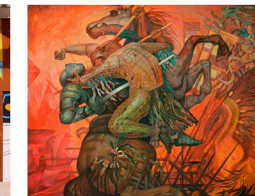
Our design reads from right to left beginning with an indigenous Yelamu Ramaytush Ohlone landscape and ending with native birds soaring through a clear sky, a symbol of hope for our future and respect for our past. The five criss-cross pattern shapes that stretch across our mural are inspired by a pattern in an Ohlone basket woven by Linda Yemane, a descendent of the Ohlone tribe.

Our primary goal is to foster better stewards of this beautiful land we share as well as working on our own personal health and the healing of our communities. Connection is an important factor in creating lasting change. In many cultures weaving is an art of recognizing health and wholeness as a root and overcoming blockages of seemingly broken connections. We use lines/ cables and by extension the buses and people within them as well as elements in the natural world as visual symbols of how our collective energy is woven into the fabric, or in this case basket, of life.

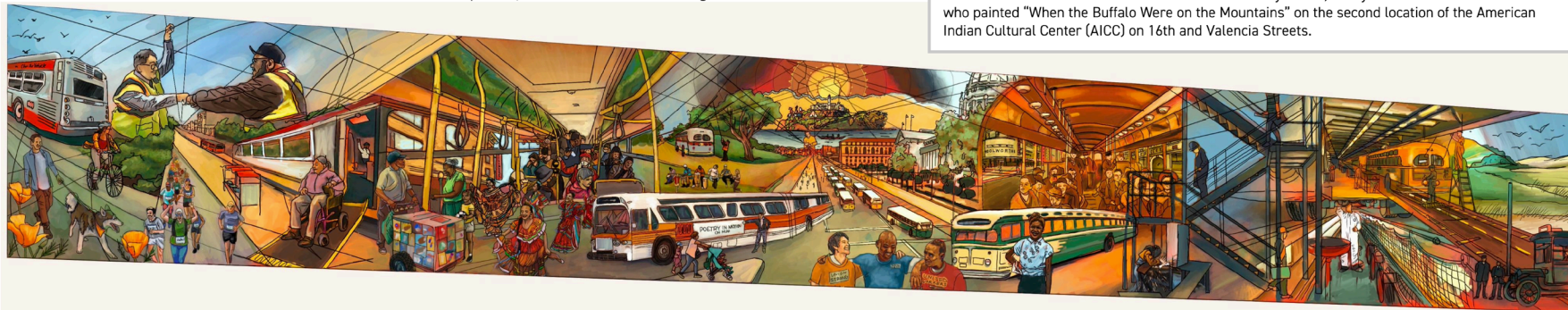
The color palate we chose consists of greens, earth tones, reds and orange hues. The greens serve to channel sustainability and healing energy. Earth tones depict the roots that provide stability and balance. The reds and oranges are a tribute to two colors most associated with our unique city and historic SF MUNI.

The heart of this mural is people; we showcase connections between passengers, bus riders, drivers and pedestrians. We celebrate our home landscape as it shifts, highlighting local communities of today and nostalgically recalling San Francisco of the 1940s up to the present across space and time.

MUNI is not just a mode of transportation for getting from place to place. It is a portal for viewing San Francisco through different lenses. It can be a place of comfort, a place of friendship, a place to rest and reflect, or a place of entertainment. One can take a bus that begins Downtown and ends in the Marina District, having passed by some of the oldest buildings in San Francisco and meeting someone who claims to have "jammed with Santana in '75." Everyone has an unforgettable MUNI story and we are all connected through these gems. MUNI is inseparable from San Francisco and the paths it weaves through on its routes unite communities, art, and history. Our intention for this design is to capture the spirit of San Francisco, composing a visual narrative that celebrates our past, embraces our present, and beckons us towards a brighter future.



We were inspired by many artists including Diego Rivera, David Alfaro Siqueiros, Jorge Gonzalez Camarena, Dr. Maya Angelou who grew up in San Francisco and was one of the first black women to be a Muni conductor and the muralists Gary McGill, Sheryl Graves and Barbara Cameron who painted "When the Buffalo Were on the Mountains" on the second location of the American Indian Cultural Center (AICC) on 16th and Valencia Streets.

















Potrero Yard Modernization Public Art Project
17th Street Bus Ramp Integrated Glass Artwork
Recommended Artist + Proposal
Twin Walls Mural Company | *Muni in Motion*



Public Comment

Item 6: Potrero Yard Modernization Project—
17th Street Bus Ramp

Item 6: Potrero Yard Modernization Project— 17th Street Bus Ramp

Action

Motion to approve artist team Twin Walls Mural Company LLC and proposal *Muni in Motion* for the Potrero Yard Modernization Project 17th Street Bus Ramp integrated glass artwork opportunity, as recommended by the artist review panel.

Motion to authorize the Director of Cultural Affairs to enter into a contract with Twin Walls Mural Company LLC for an amount not to exceed \$70,000 for the design and consultation during fabrication and installation of an integrated glass artwork for the Potrero Yard Modernization Project 17th Street Bus Ramp.

Item 7: Potrero Yard Modernization Project— Mariposa Street Stairwell

Discussion and Possible Action

Presenter: Senior Program Manager Jackie von Treskow

Presentation Time: Approximately 7 minutes

Discussion and possible action to approve artist Josué Gamaliel Rojas and proposal *A Transfer to Tomorrow* for the Potrero Yard Modernization Project Mariposa Stairwell integrated glass artwork opportunity, as recommended by the artist review panel.

Discussion and possible action to authorize the Director of Cultural Affairs to enter into a contract with Josué Gamaliel Rojas for an amount not to exceed \$40,000 for the design and consultation during fabrication and installation of an integrated glass artwork for the Potrero Yard Modernization Project Mariposa Street Stairwell.

Potrero Yard Modernization Public Art Project
Mariposa Stairwell Integrated Glass Artwork
Recommended Artist + Proposal
Visual Arts Committee | September 18, 2024









6 SOUTH ELEVATION ART
 SK-23 Scale: 1/32" = 1'-0"

Mariposa Stairwell Artist Conceptual Design Proposals

Hogar Integrated Glass Artwork for Potrero Yard Stairwell on Mariposa at York Street

THE STORY
This concept is inspired by Adolfo de Vito (Tito) sculptures from the Central Mexican states of Mexico and Morelos. These clay sculptures feature brightly painted faces often depicting people, animals and flowers. They represent a way of life in small towns, depicting scenes of daily rural life and representations of crops. In this case, the tree represents the Mission District and the larger San Francisco community. It represents the idea of home, hence the title Hogar (Home).

The actual imagery depicts a familiar Mexican symbol, that resonates with many of the Latin American cultures represented in the Mission District. While primarily inspired by a joyful and uplifting traditional image, it is primarily also a nod to the Mission's beautiful and strong Latino heritage and identity.

The vivid, natural imagery speaks to Muni's mission of providing clean, more environmentally friendly public transportation for our community.

SYMMETRY
The structure of the tree features a symmetrical composition. This reinforces an inherent structure, harmony. The birds, however, introduce an element of asymmetry, representing disorder and chaos. The notion of creating tension between these two concepts of order and disorder speaks to the idea that our home, our community, and the extension Muni, is in a constant flow, seeking to create order and harmony amidst other diversity in our land.

THE FLOWERS
This section represents the flowers that are often found in the sculptures. The colors are vibrant and bright, representing the joy and life that is often found in these communities.

THE TREE TRUNK
The trunk of the tree is a central element, representing the foundation of the community. It is a symbol of strength and stability, providing a sense of direction and purpose.

THE BIRDS
The birds are a key element of the artwork, representing freedom and movement. They are a symbol of hope and aspiration, reaching towards the sky and the future.

THE GOLD
The gold is a central element of the artwork, representing wealth and prosperity. It is a symbol of success and achievement, representing the dreams and aspirations of the community.

Jet Martinez
Hogar

Potrero Yard Modernization Project: A Transfer to Tomorrow
Artist: Josué Rojas

Transfer to tomorrow is a site-specific tribute to the SF Muni workers, the East Mission Neighborhood – past present and future community and the state of the art in transportation, housing and educational activities that will take place at the site. The new main yard and housing will take shape in the context of the rich cultural & historic space that is San Francisco. In San Francisco, we hold a strong tradition of creative culture-making and art making. At the same time we are on the cutting edge of technology, innovation in sustainable green practices and the arts.

Transfer to tomorrow is a celebration, a tribute and a prayer for a more responsible tomorrow. This mural invites the viewer to think about the natural world, the city of SF and where – and how – we source our energy and transportation.

Artist Josué Rojas has designed a modern approach to a traditional artwork. Emerging from the traditional folk artistry in the Latin American, the artwork is filled with legions of wildlife, animals, birds and the natural world. As a result of the neighborhood and a clear line through all of its parts, the artist carefully highlights the working class employees and workers of the Muni System. The artist chose both vibrant and traditional colors to represent the diversity of color and history within a symbol of hope and aspiration. The artwork is a nod to the past, as it pays tribute to the workers and their families. In addition, vibrant colors and traditional colors are woven into a tapestry of color and history within a symbol of hope and aspiration. The artwork is a nod to the past, as it pays tribute to the workers and their families. In addition, vibrant colors and traditional colors are woven into a tapestry of color and history within a symbol of hope and aspiration.

Transfer to tomorrow is inspired by the history, current and future culture of the neighborhood and transportation innovation. Muni is a vital service, providing equitable access to mobility and is seen as a vital lifeline for the city. An all-electric fleet of buses to be housed at the site represents a new dawn on the horizon for Muni, this neighborhood and the city of San Francisco – it is a tribute to past workers and an honor for future workers and riders of Muni.

The work will be made of hand-made painting, digital artwork that will be digitally printed on glass and installed on the South entrance of the Potrero Yard Modernization Yard. The mural proposal is being and digital, the final artwork will be a combination of hand-painted with digital components. The final image will be photographed and will be digitally printed on glass.

In preparing for the design of this piece, artist Josué Rojas spoke to neighbors and representatives of the project – Jonathan Gordon, Executive Director of the association of the Mission Home, Jorge Diaz, veteran SF Muni worker and union rep, Chris Guadalupe, former neighborhood push services, Potrero Yard rep of Q22, 'Rightwheel' and Rodrigo Duran, Executive Director of Central SF – San Francisco's largest union for bus.

Sustainable Power:
Hetch Hetchy

A focus on the future & honoring memory

Josué Rojas
A Transfer to Tomorrow

MONDAY ON THE 48
Christopher Burch Integrated Glass Artwork for the Potrero Yard Stairwell on Mariposa at York Street

VIEW FROM YORK ST

VIEW FROM YORK ST

COMMUNITY ENGAGEMENT
Placeholder images in the mock-up will evolve through deeper community engagement. Collaborating with the Potrero Hill Neighborhood House Organization and the residents of the Potrero Terrace and Annex housing developments will ensure the thoughtful inclusion of residents' photos. Collaboration with Indigenous community members, such as Dorela Doria and Jorge Guillermo Perez Molina, ensures respectful use of their images and integration of Indigenous ceremonial knowledge into the final design.

CONNECTING COMMUNITY
SF SFMTRA

Christopher Burch
Monday on the 48

Juan R. Fuentes Integrated Glass Artwork for the Potrero Yard Stairwell on Mariposa at York Street

My concept for this glass mural focuses on a young family in the Mission. They are the future Chicanos or Latinx children whose families may have migrated to San Francisco in search of a better future. They are on Mission Street possibly celebrating Cinco de Mayo, Carnaval, or Día de los Muertos, along with the low-rider community, all a possibility. As a senior artist and grandfather, I'm hoping that when young people in the Mission see this mural and image that they see themselves and it makes them feel proud of their community and culture.

Cultural Symbols
The mural features a young family, a bus, and a low-rider, representing the community and culture. The colors are vibrant and bright, representing the joy and life that is often found in these communities.

Mural References
The mural is inspired by the history, current and future culture of the neighborhood and transportation innovation. Muni is a vital service, providing equitable access to mobility and is seen as a vital lifeline for the city. An all-electric fleet of buses to be housed at the site represents a new dawn on the horizon for Muni, this neighborhood and the city of San Francisco – it is a tribute to past workers and an honor for future workers and riders of Muni.

Elevation View
The mural is a combination of hand-painted with digital components. The final image will be photographed and will be digitally printed on glass.

VIEW FROM YORK ST

VIEW FROM YORK ST

COMMUNITY ENGAGEMENT

Juan R. Fuentes
Mariposas en la Misión



POTRERO YARD MODERNIZATION PROJECT | MARIPOSA STAIRWELL
ARTIST REVIEW PANEL TWO SUMMARY

MEETING DATE

August 29, 2024

VOTING SELECTION PANELISTS

Chris Jauregui, Vice President, Plenary Americas (shared vote with Yancey Clayton)
Fátima Ramirez, Executive Director, Acción Latina
John Angelico, Public Information Officer, SFMTA (shared vote with Kerstin Magary)
Jolene Yee, Community Representative, Friends of Franklin Square Park
Kerstin Magary, Deputy Program Manager, SFMTA (shared vote with John Angelico)
Mary Chou, Civic Art Collection and Public Art Director, SFAC
Mary Travis-Allen, Community Representative, American Indian Cultural District
Rhiannon Evans MacFadyen, Curator, Artist, Consultant
Trisha Lagaso Goldberg, Independent Curator
Yancey Clayton, Principal/Associate Director, Arcadis IBI Group (shared vote with Chris Jauregui)

PROCESS

Four artist finalists presented their proposals for the Potrero Yard Modernization Mariposa Stairwell Public Art Project. The Artist Review Panel discussed the finalists' proposals and scored each artist on the following criteria (1= low score):

Artistic Merit (1-10)
Relevant Skills and Experience (1-5)
Meets Project and Civic Art Collection Goals (1-10)
Appropriate to Site (1-5)

RESULTS

Josué Rojas	230
Jet Martinez	225
Juan R. Fuentes	201
Christopher Burch	186

Artist Review Panel Two Composition

San Francisco Arts Commission

Mary Chou, Director of Public Art Program and Civic Art Collection

SFMTA Representatives

John Angelico, Public Information Officer, Building Progress Program

*Kerstin Magary, Section Director, CSO Facilities and Real Property Management,
Deputy Building Progress Program Manager*

Design Team Representatives

Yancey Clayton, Principal/Associate Director, Arcadis IBI Group

Chris Jauregui, Vice President, Plenary Americas

Arts Professionals

Rhiannon Evans MacFadyen, Curator, Artist, Consultant

Trisha Lagaso Goldberg, Artist and Independent Curator

Fátima Ramirez, Executive Director, Acción Latina

Community Representatives

Mary Travis-Allen, Potrero Neighborhood Working Group, American Indian Cultural District

Jolene Yee, Potrero Neighborhood Working Group, Friends of Franklin Square Park

Josué Rojas



As an artist, educator and Mission native, Josué Rojas has more than 20 years of experience in fine arts, community arts, arts leadership, and bilingual and ethnic media in the San Francisco Bay Area. Throughout his many endeavors, his work and vision have been characterized by a commitment to San Francisco's cherished values of community arts and media, civic engagement, social justice and empowerment for migrant communities and marginalized communities at large.



Potrero Yard Modernization Project: A Transfer to Tomorrow Artist: Josué Rojas

Transfer to tomorrow is a site-specific tribute to the SF Muni workers, the East Mission Neighborhood — past present and future community and the state of the art transportation, housing and educational activities that will take place at the site. The new muni yard and housing will take shape in the context of the rich cultural & historical space that is San Francisco. In San Francisco, we hold a strong tradition of creative culture-bearing and art making. At the same time we are on the cutting edge of technology, innovation in sustainable green practices and the arts.

Transfer to tomorrow: is a celebration, a tribute and a prayer for a more responsible tomorrow.

This mural invites the viewer to think about the natural world, the city of SF and where —and how— we source our energy and transportation.

Artist Josué Rojas has designed a modern approach to a traditional artform. Embarking from the Salvadoran Folk Tapestry in the La Palma style, the artwork is filled with depictions of wildlife, animals, buses and the natural world. As a native of this neighborhood and a Muni rider throughout all of his youth, the artist specifically highlights the working class employees and ridership of the Muni System. The artist utilizes both realistic and posterized imagery for delivery of bright, fun colors. In addition, abstract patterns and formations are woven into a tapestry of color and flowing rainbow — a symbol of hope. This piece is an expression of joy, sure to both tap into nostalgia and inspire young people to know more about their own cultural and natural roots, including the natural history of San Francisco and the Bay Area.

Transfer to tomorrow is inspired by the history, current and future culture of the environment and transportation innovation. Muni is a vital service, providing equitable access to mobility and is seen as a vital lifeline for the city. An all-electric fleet of buses to be housed at the site represents a new dawn on the horizon for Muni, this neighborhood and the city of San Francisco — it is a tribute to past workers and an honor for future workers and riders of Muni.

The work will be made of hand-made painting, digital artwork that will be digitally printed/ manufactured in glass and installed on the South entryway of the Potrero Modernization Yard. The mural proposal is analog and digital, the final artwork will be a combination of hand-painted with digital components. The final image will be photographed and will be digitally printed on glass.

In preparing for the design of this piece, artist Josué Rojas spoke to neighbors and stakeholders of the project — Jonathan Corder, Executive Director of the association of the Rmaytush Ohlone, Jorge Elias, veteran SF Muni worker and union rep, Chris Cuadrado of Horizons unlimited youth services, Pendarvis Harshaw of KQED 'Rightnowish' and Rodrigo Duran, Executive Director of Carnaval SF — San Francisco's largest outdoor festival.



Sustainable Power:
Hetch Hetchy



A focus on the future
& honoring memory



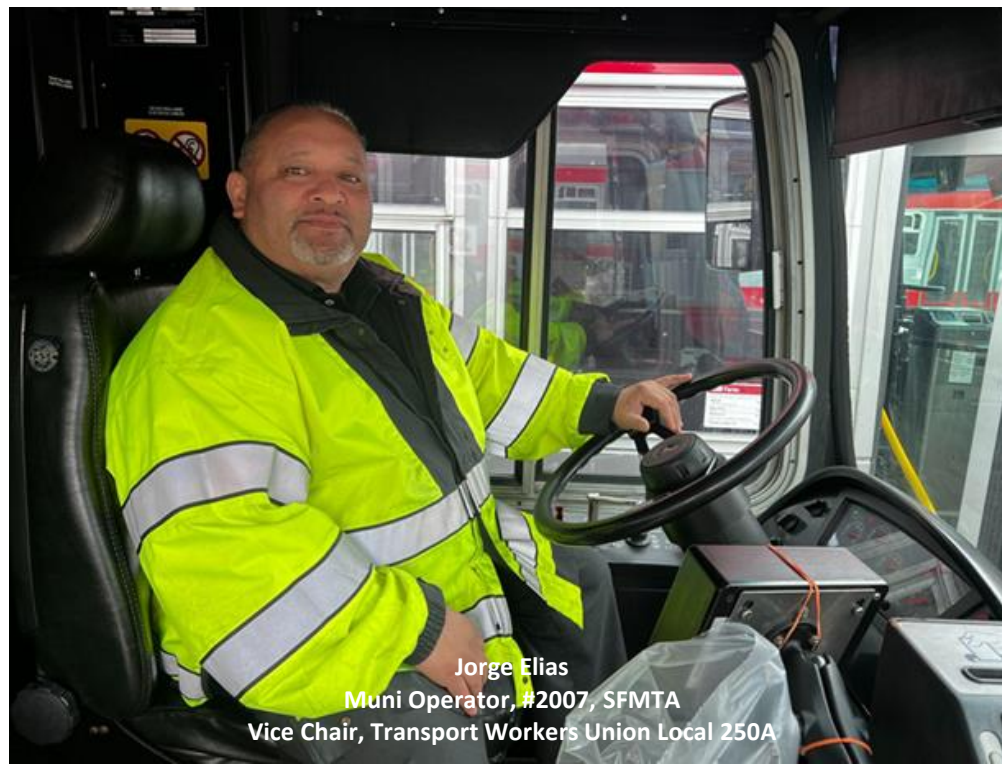
Rodrigo Ehecatl Durán
Executive Director
Carnaval San Francisco



Jonathan Cordero, PhD
Founder and Executive Director
Association of Ramaytush Ohlone



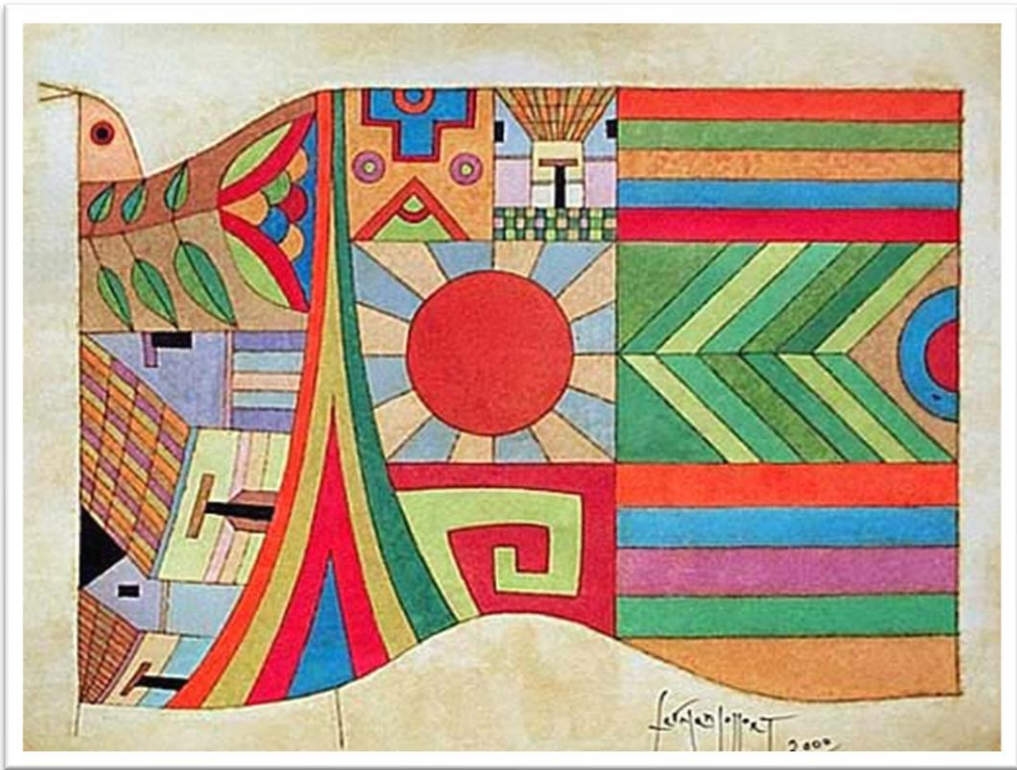
Christian "L7" Cuadrado
Program Coordinator, Prevention/DJ Project
Horizons Unlimited



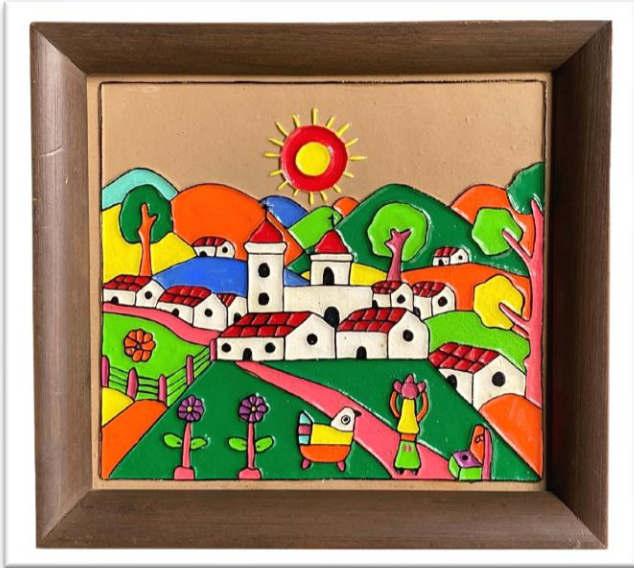
Jorge Elias
Muni Operator, #2007, SFMTA
Vice Chair, Transport Workers Union Local 250A

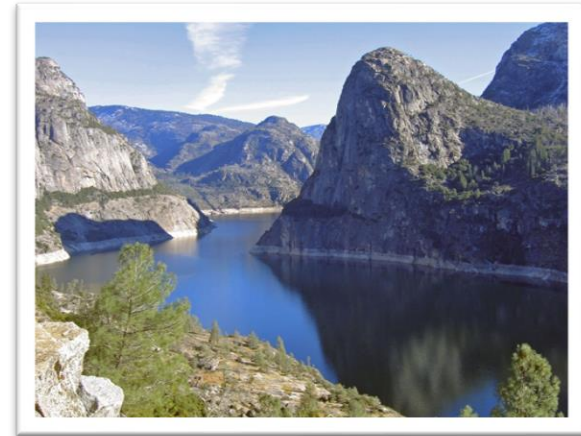


Pendarvis Harshaw
Columnist and Host, Rightnowish
KQED



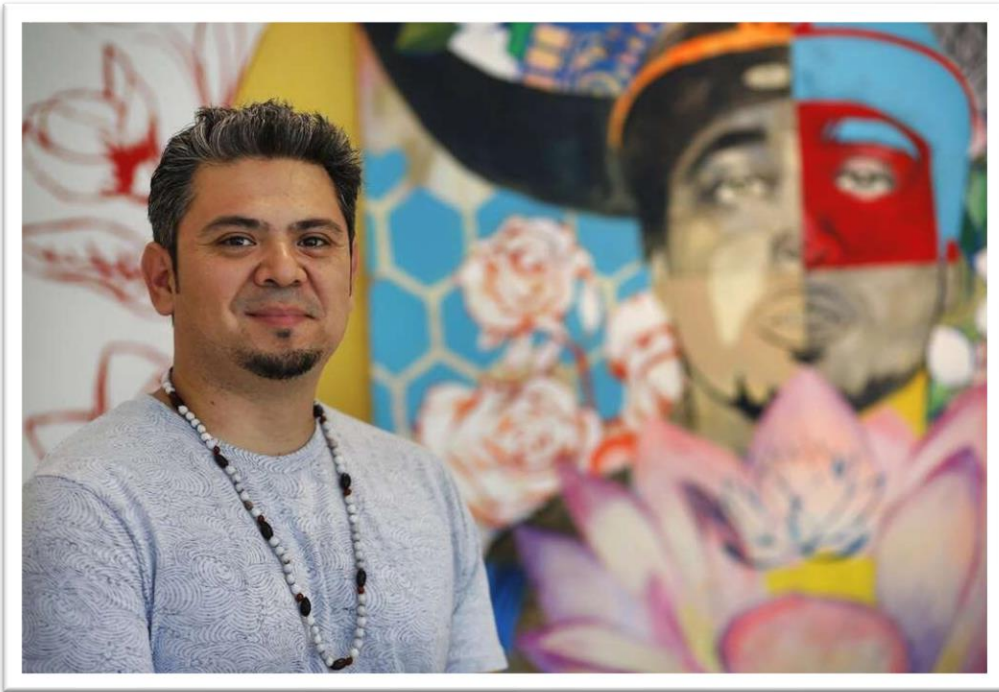
Fernando Llort
Herald of the Dawn







Potrero Yard Modernization Public Art Project
 Mariposa Stairwell Integrated Glass Artwork
 Recommended Artist + Proposal
 Josué Rojas | *A Transfer to Tomorrow*



Potrero Yard
 Modernization
 Project:
**A Transfer to
 Tomorrow**
 Artist: Josué Rojas

Transfer to tomorrow is a site-specific tribute to the SF Muni workers, the East Mission Neighborhood — past present and future community and the state of the art transportation, housing and educational activities that will take place at the site. The new muni yard and housing will take shape in the context of the rich cultural & historical space that is San Francisco. In San Francisco, we hold a strong tradition of creative culture-bearing and art making. At the same time we are on the cutting edge of technology, innovation in sustainable green practices and the arts.

Transfer to tomorrow: is a celebration, a tribute and a prayer for a more responsible tomorrow.
 This mural invites the viewer to think about the natural world, the city of SF and where —and how— we source our energy and transportation.

Artist Josué Rojas has designed a modern approach to a traditional artform. Embarking from the Salvadoran Folk Tapestry in the La Palma style, the artwork is filled with depictions of wildlife, animals, buses and the natural world. As a native of this neighborhood and a Muni rider throughout all of his youth, the artist specifically highlights the working class employees and ridership of the Muni System. The artist utilizes both realistic and posterized imagery for delivery of bright, fun colors. In addition, abstract patterns and formations are woven into a tapestry of color and flowing rainbow — a symbol of hope. This piece is an expression of joy, sure to both tap into nostalgia and inspire young people to know more about their own cultural and natural roots, including the natural history of San Francisco and the Bay Area.

Transfer to tomorrow is inspired by the history, current and future culture of the environment and transportation innovation. Muni is a vital service, providing equitable access to mobility and is seen as a vital lifeline for the city. An all-electric fleet of buses to be housed at the site represents a new dawn on the horizon for Muni, this neighborhood and the city of San Francisco — it is a tribute to past workers and an honor for future workers and riders of Muni.

The work will be made of hand-made painting, digital artwork that will be digitally printed/ manufactured in glass and installed on the South entryway of the Potrero Modernization Yard. The mural proposal is analog and digital, the final artwork will be a combination of hand-painted with digital components. The final image will be photographed and will be digitally printed on glass.

In preparing for the design of this piece, artist Josué Rojas spoke to neighbors and stakeholders of the project — Jonathan Corder, Executive Director of the association of the Rmaysush Oklone, Jorge Elias, veteran SF Muni worker and union rep, Chris Cuadrado of Horizons unlimited youth services, Pendarvis Harshaw of KQED 'Righthnowish' and Rodrigo Duran, Executive Director of Carnaval SF — San Francisco's largest outdoor festival.



Sustainable Power:
 Hetch Hetchy



A focus on the future
 & honoring memory

Public Comment

Item 7: Potrero Yard Modernization Project—
Mariposa Street Stairwell

Item 7: Potrero Yard Modernization Project— Mariposa Street Stairwell

Action

Motion to approve artist Josué Gamaliel Rojas and proposal *A Transfer to Tomorrow* for the Potrero Yard Modernization Project Mariposa Stairwell integrated glass artwork opportunity, as recommended by the artist review panel.

Motion to authorize the Director of Cultural Affairs to enter into a contract with Josué Gamaliel Rojas for an amount not to exceed \$40,000 for the design and consultation during fabrication and installation of an integrated glass artwork for the Potrero Yard Modernization Project Mariposa Street Stairwell.

.

Item 8: 900 Innes - India Basin Waterfront Park Project (Previously India Basin Shoreline Park)

Discussion and Possible Action

Presenter: Project Manager Arianne G. Davidian

Presentation Time: Approximately 7 minutes

Discussion and possible action to approve as installed the completed artwork titled *Lady Bayview*, 2024, by Raylene Gorum for the India Basin Waterfront Park Project at 900 Innes Ave. The artwork is a concrete paving, approximately 6,900 sq. ft., installed on Pier 2.



900 INNES - INDIA BASIN SHORLINE PARK

"INDIA BASIN WATERFRONT PARK"

PUBLIC ART PROJECT

LADY BAYVIEW

RAYLENE GORUM

(AS-INSTALLED)

SEPTEMBER 18, 2024
VISUAL ARTS COMMITTEE MEETING

sfac



PUBLIC ART OPPORTUNITY – 900 INNES

Artist-designed paving for Pier 2. The Artist's scope will be to produce a 2D design that will be integrated into the construction documents for the pier. The design will be implemented by the general contractor in lithocrete, lithomosaic, or other concrete finish for the pier. The current estimate could allow for the artist's design to cover almost 4/5 of the 6900 sq. ft. surface area of the pier. The artist's design will be accessioned into the Civic Art Collection, but not the finished product on the pier.

PUBLIC ART PROJECT GOALS – 900 INNES

- Serve as a welcome beacon for India Basin, and be an icon and asset for the community and an expression of neighborhood identity.
- The artwork should be a placemaker and support the new park as a destination.
- It should be a large, landmark scale with high visibility.
- And draw residents and visitors into the park and waterfront shoreline.
- Lastly, the artwork should provide a community benefit, which includes providing opportunities for artists with a meaningful connection to the Bayview.

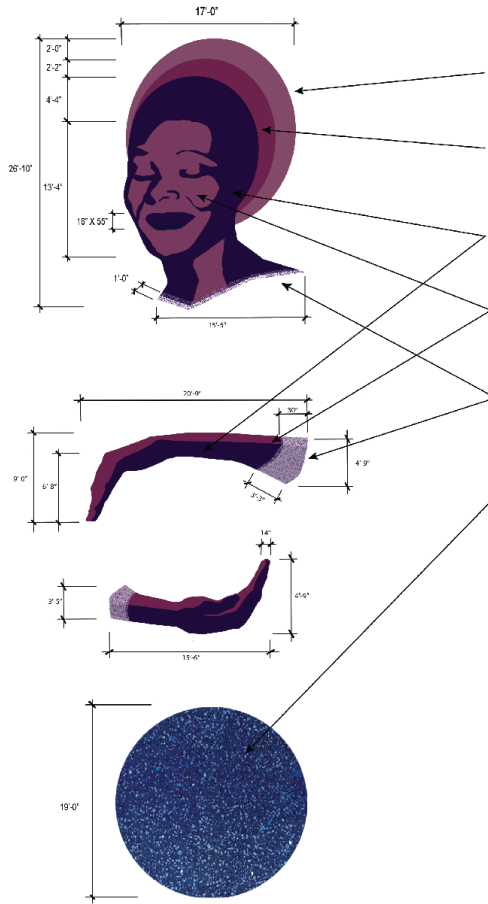
ART LOCATION



FINAL DESIGN

COMPONENT DETAILS

LITHOCRETE PORTIONS - VECTOR DRAWINGS TO BE PROVIDED TO CONTRACTOR BY ARTIST FOR TEMPLATE AND LAYOUT



LITHOCRETE COLOR / MATERIAL SCHEDULE

ALL BM COLORS MATCHED TO BENJAMIN MOORE COLOR WHEEL

	OUTER RING OF HEAD MELROSE PINK BM: 1395 SAMPLE # 20-034w-sd
	INNER RING OF HEAD / LOWER HAND SHADOW MILBERRY (W/ RUBY GLASS) BM: 2074-30 SAMPLE # 20-034u-sd
	HAIR / FACE FEATURES + HAND SHADOWS MAJESTIC VIOLET BM: 2088-10 SAMPLE # 20-034b-sd
	FACE / HANDS MILBERRY (W/ PURPLE GLASS) BM: 2075-20 SAMPLE # 20-034d-sd
	OMBRE LITHOCRETE GLASS FADES AT BASE OF NECK; HANDS DARK PURPLE / LIGHT PURPLE AND RUBY GLASS AGGREGATE SAMPLE # 20-034aa-sd
	UNIVERSE / SKY CIRCLE BLUE WITH GLASS FLECKS SAMPLE # 20-034e-sd
	MAIN CONCRETE FIELD (BACKGROUND) SAMPLE # 20-034f-sd
	SHIPS TO BE BLACK TEMPLATED ON WHITE (SLIGHT RECESS) SAMPLE # 20-034g-sd
	WINDBARB GREYS SAMPLE # 20-034h-sd

LEGEND FOR WINDBARB TEMPLATES

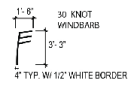
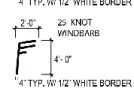
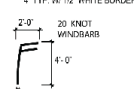
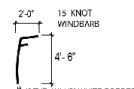
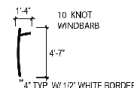
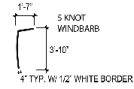
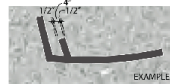
NOTE: VINYL TEMPLATES TO BE CUT FOR BLACK AND WHITE WINDBARBS AND REUSED AS INDICATED ON FULL DRAWING. CONTRACTOR TO COORDINATE WITH ARTIST'S FAC PRIOR TO MOCKUP AND LAYOUT. ARTIST TO PROVIDE VECTOR DRAWINGS FOR TEMPLATE.

MATERIALS SPECIFICATIONS:

Windbarbs: 20-034i-sd



NOTE: DO NOT TEMPLATE TO HAVE LIGHTER COLOR UNIFORMS AND DARKER GREY COLOR INSET BY 1/2" ON TOP

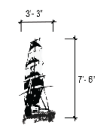
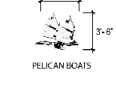
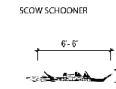
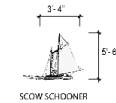


LEGEND FOR SHIP TEMPLATES

VINYL TEMPLATES TO BE CUT FOR BLACK AND WHITE STAINED SHIPS AND COORDINATED WITH ARTIST PRIOR TO INSTALLATION

MATERIALS SPECIFICATIONS:

Ships: 20-034j-sd



BRIGANTINE



GRACE QIAN



SF BAY FERRY



AMERICA'S CUP RACING BOAT



ALMA



SAILBOAT



LIBERTY SHIP

900 INNES PARK DEVELOPMENT

CITY AND COUNTY OF SAN FRANCISCO
RECREATION AND PARKS DEPARTMENT
400 GOLDEN GATE AVENUE, SUITE 1220
SAN FRANCISCO, CA 94103
PH: 415-611-2700

TRUST FOR PUBLIC LAND
151 WINTHROP STREET
SUITE 200
SAN FRANCISCO, CA 94104
PH: 415-459-4554

PHILIP TORILAH | LANDSCAPE ARCHITECT
SUSTAINABLE DESIGN CO. |
PH: 209-952-6667

CIVIL ENGINEER
SERRWOOD DESIGN ENGINEERS
PH: 415-398-0600

ARCHITECT
JENSEN ARCHITECTS
PH: 415-398-0600
ECOLOGICAL RESTORATION
DNA CITY
PH: 855-656-3350

STRUCTURAL ENGINEER
JAN BRUN STRUCTURAL ENGINEERS
PH: 415-398-9161

COASTAL ENGINEER
ADRIAN T. AND NICKS
PH: 650-644-5411

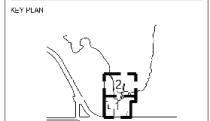
LIGHTING
MTRP CALIFORNIA
PH: 415-406-2252

MECHANICAL ENGINEERING
PH: 415-406-2240

MECHANICAL ENGINEERING
ACS, INC.
PH: 415-627-0240

SECURITY CONSULTANT
PENTA CONSULTING
PH: 415-286-0452

CONTRACTOR



REVISIONS:

NO.	DATE	DESCRIPTION

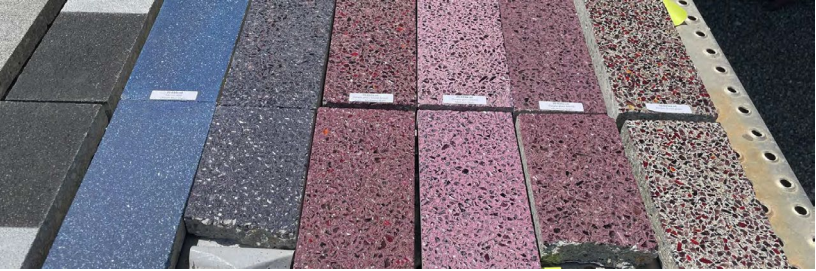
BID SET

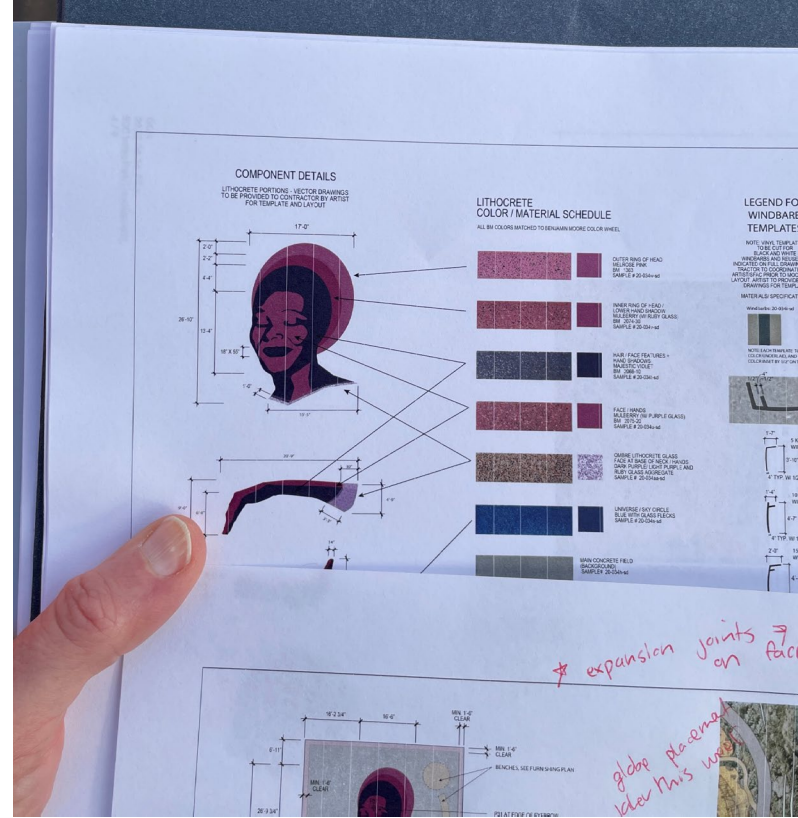
DRAWN BY	CHECKED BY
DATE	CON PROJECT #
9/24/2021	1608

LADY BAYVIEW ART

L802.1

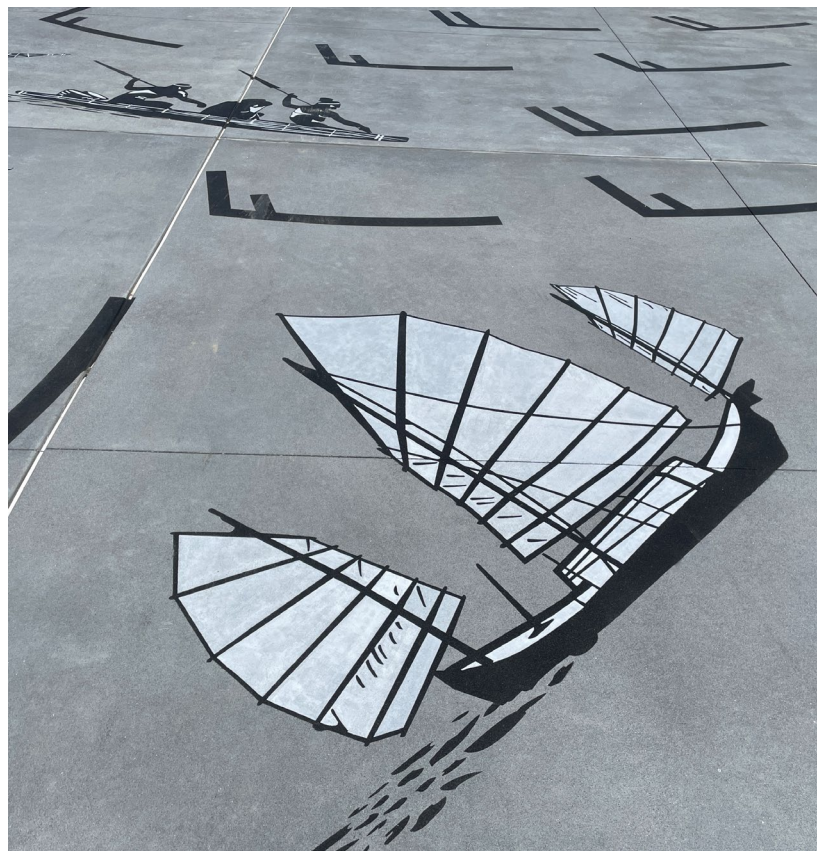






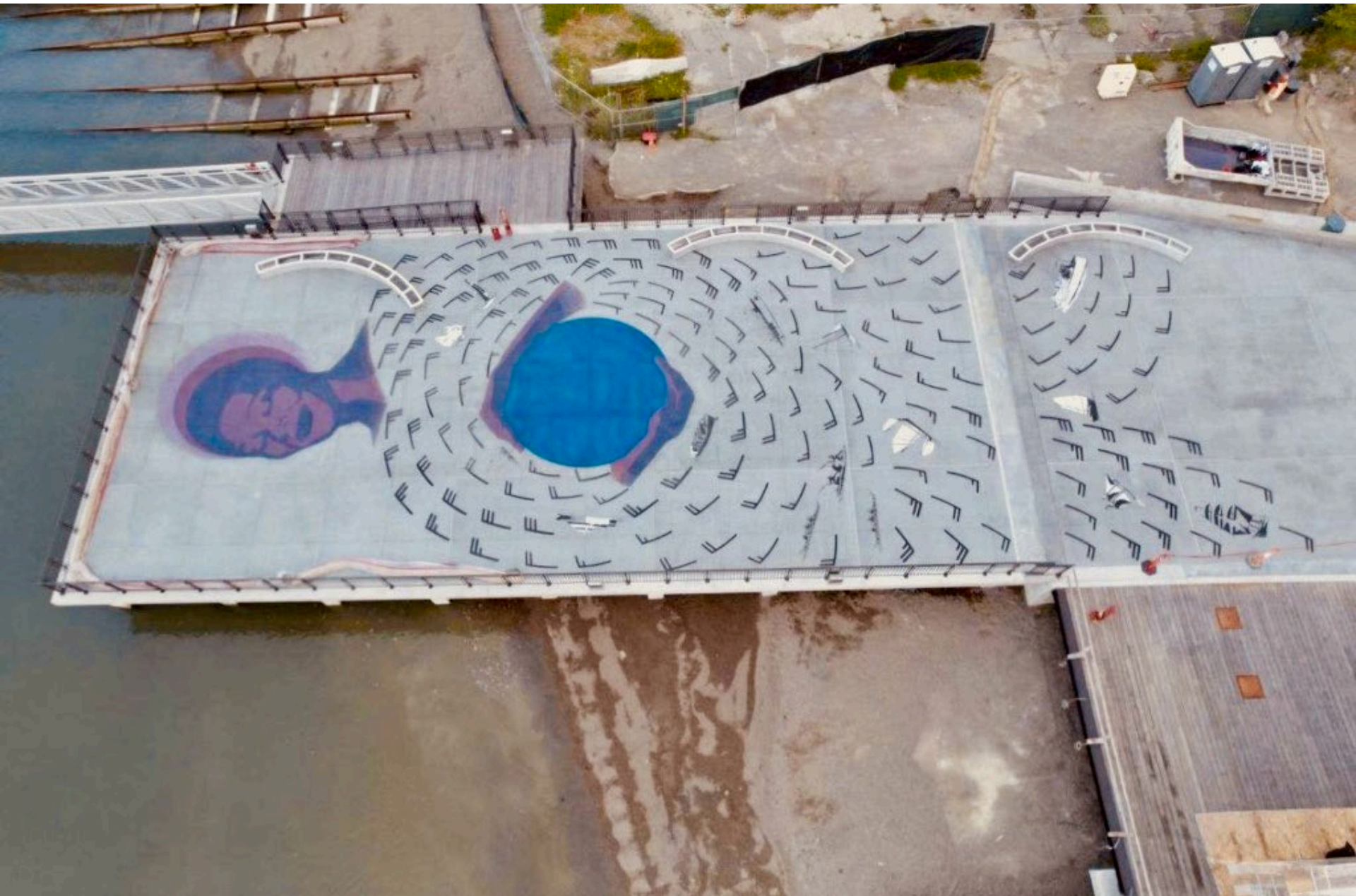














**SAVE
THE
DATE**



INDIA BASIN WATERFRONT PARK

— AT 900 INNES —

COMMUNITY CELEBRATION | OCTOBER 19, 2024 | 11 AM TO 4 PM

Public Comment

Item 8: 900 Innes - India Basin Waterfront Park Project
(Previously India Basin Shoreline Park)

Item 8: 900 Innes - India Basin Waterfront Park Project (Previously India Basin Shoreline Park)

Action

Motion to approve as installed the completed artwork titled *Lady Bayview*, 2024, by Raylene Gorum for the India Basin Waterfront Park Project at 900 Innes Ave. The artwork is a concrete paving, approximately 6,900 sq. ft., installed on Pier 2.

Item 9: India Basin Waterfront Park Project **(Previously India Basin Shoreline Park)**

Discussion and Possible Action

Presenter: Project Manager Arianne G. Davidian

Presentation Time: Approximately 5 minutes

Discussion and possible action to approve the final design of *Joy Personified*, a series of 7 figurative, human-scaled sculptures, by Kristine Mays for the India Basin Waterfront Park Project, located at Hunters Point Blvd. and Hawes St.

An aerial photograph of the India Basin Waterfront Park in San Francisco. The image shows a large body of water in the foreground, with a green park area and a long pier extending into it. In the background, a dense urban area with many buildings and houses is visible under a clear blue sky. The text is overlaid in white on the image.

INDIA BASIN SHORLINE PARK

"INDIA BASIN WATERFRONT PARK"

PUBLIC ART PROJECT

FINAL DESIGN KRISTINE MAYS

SEPTEMBER 18, 2024
VISUAL ARTS COMMITTEE MEETING

sfac



PUBLIC ART OPPORTUNITY – INDIA BASIN SHORELINE PARK

The Arts Commission is looking to commission a sculpture or series of human-scale sculptures located along the walking paths throughout India Basin Shoreline Park. Artwork must consist of durable, sustainable materials intended for exterior use.

PUBLIC ART PROJECT GOALS – INDIA BASIN SHORELINE PARK

- Inspired by and responsive to both the site and the proposed park design, including its natural habitats, physical landscape, site history, sustainability, and program
- A point of discovery and have a cohesive narrative experience along trails of the park
- Serves as an asset for the community and expression of neighborhood identity
- Provides a community benefit, which includes providing opportunities for artists with a meaningful connection to the Bayview-Hunters Point neighborhood in San Francisco

joy personified

Proposal for the India Basin Shoreline Park



"Joy Personified" is a celebration of community.

concept

There is a rhythm, a way of being, a certain communication that happens within black community that not everyone understands. The glances, eyebrow raises, and mere sounds exchanged between black folk that say it all without saying much of anything. This exchange is universal among black people. The way we can dance, laugh and enjoy one another in the midst of struggle. The way we enter a room and look for one another. The way we move as a group and know that our ability to spark change is birthed in community. **"Joy Personified" is a celebration of community.**

The richness of the Bayview is that black folks from a variety of places came together and started a life here. It is indeed the embodiment of the black diaspora. We came together and realized our similarities bound us like the richest most decadent gravy. Together we have lived and thrived, struggled, persevered and continued onward. My collection of sculptures celebrates, acknowledges, and seeks to recognize this indescribable sense of community.

Through translating my wire works into permanent public works, I am giving honor to both living and dead, making the invisible - visible. Whether in the bright morning sunlight, or in the late afternoon fog coming from the Bay, this work of art will serve as a beacon for hope, strength and liberation. The creation of this monumental work of art comes from a very personal place. It is created with love and a deep sense of legacy as I offer my talents toward the preservation of the spirit of African Americans and African American life in San Francisco. May the ancestors celebrate along with those among us. Here is to the past, present and future!

Kristine Mays

logistics

Seven life-size sculptures will be created and mounted onto concrete slabs. Two of the installations will rest on concrete pads that are 8-10 inches above ground. The girls jumping rope will be presented on concrete pedestal that will be 3 -4 feet above ground, allowing the viewer to look up at it as well as see it from a distance.

The figures range in size from six feet tall to four feet, eleven inches. The figures will be fabricated out of a series of thicker diameter carbon steel bars (approximately 1/2") to resemble the original look of Kristine's wire work and to provide durability for the outdoors. A process called hot dip galvanization will offer corrosion resistance and then the works will be powder coated. The sculptures will be painted a shiny copper color, which will shimmer in the bright sun, evoking thoughts of brilliant brown skin against an incredible lush green topography.



#1. Three young ladies engaging in double dutch jump rope.



#2. A couple dancing.



#3. Two boys playing.



Color shown on a sculpture



example of steel rods to be used to produce sculptures

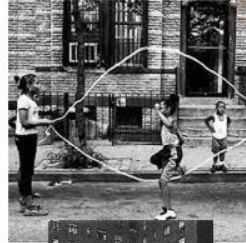
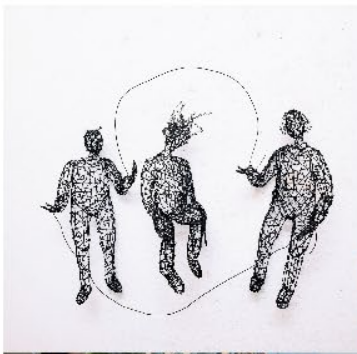


shiny copper color to be used on sculptures



joy personified
 india basin shoreline park
moldboard
 artist: Kristine Mays

“Joy Personified” is a celebration of community.



honoring life in the Bayview - past, present, and future.



My goal is to create something that will communicate community and togetherness. The photos here represent the feelings of joy I want the park project to have. I have included examples of work I have presented outdoors to give you a glimpse of what we can anticipate as we move forward with this project.



MARINEWAY LAWN

DRIVEWAY

HUNTERS-POINT BLVD

HAWESS ST

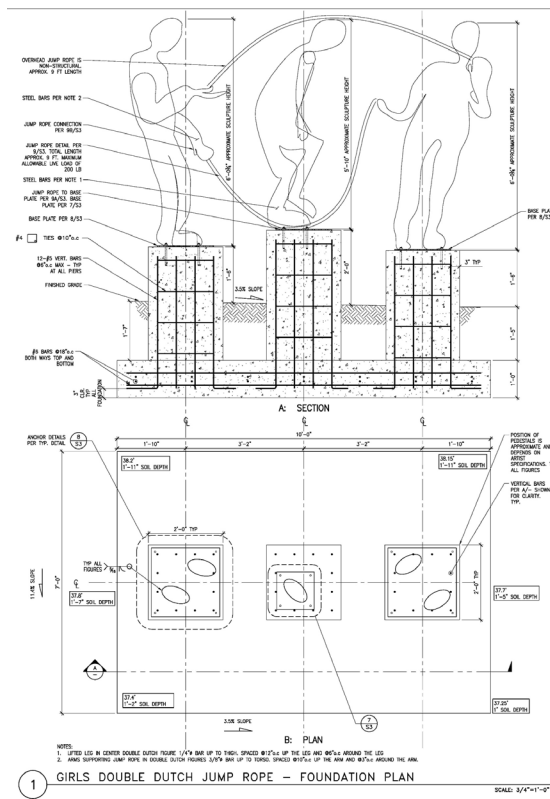
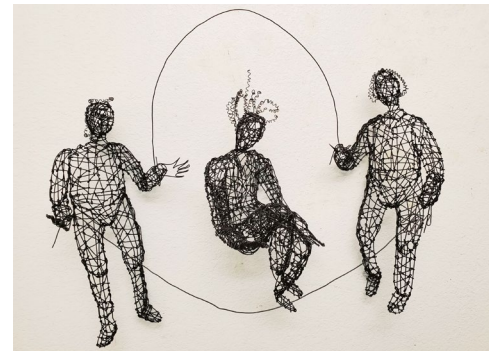
BASKETBALL COURTS

PLAY AREA

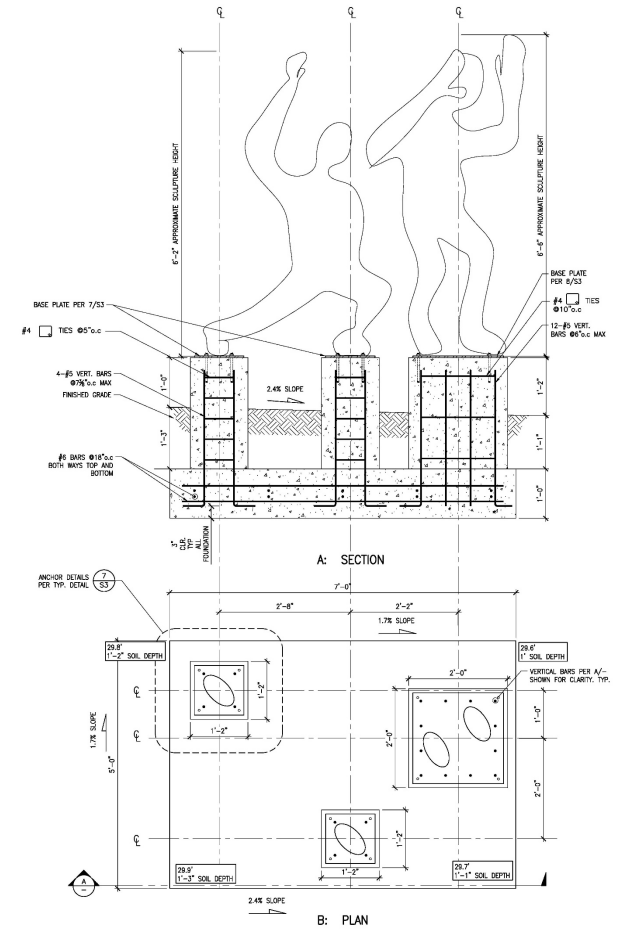
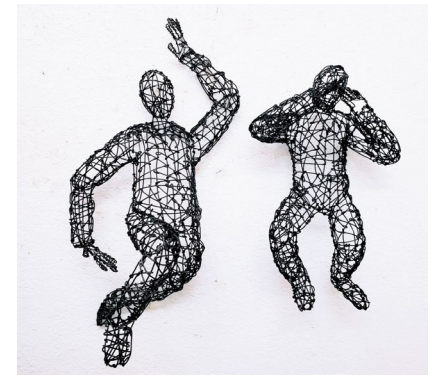
PLAY AREA

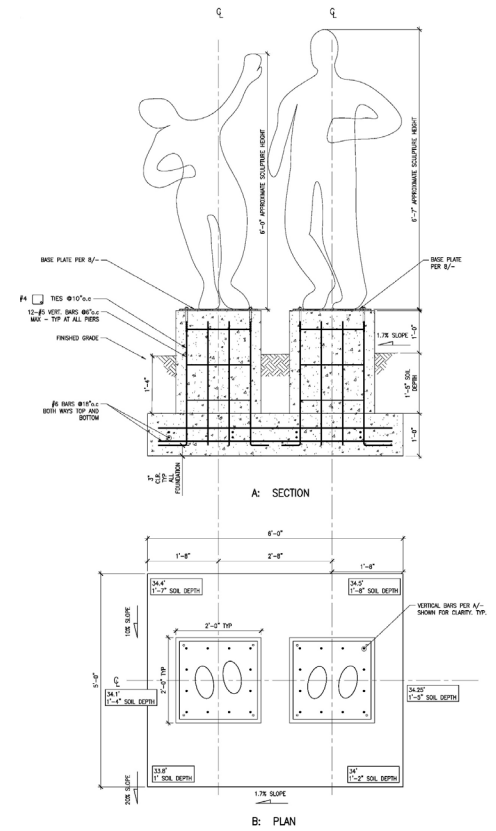
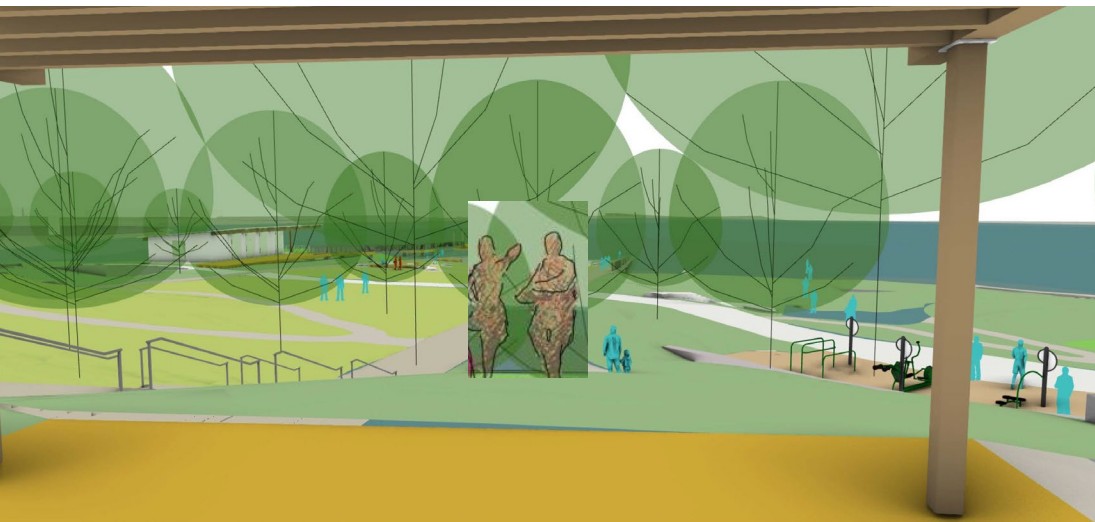
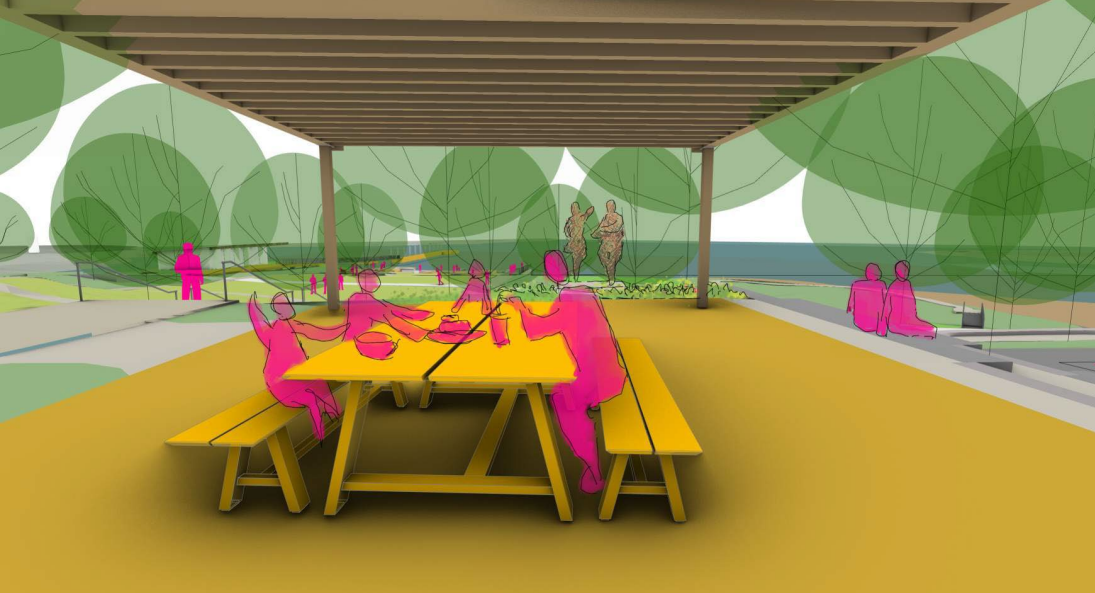
SHORELINE STABILIZATION. SEE COASTAL ENGINEERING DRAWINGS.





© Robert Perry

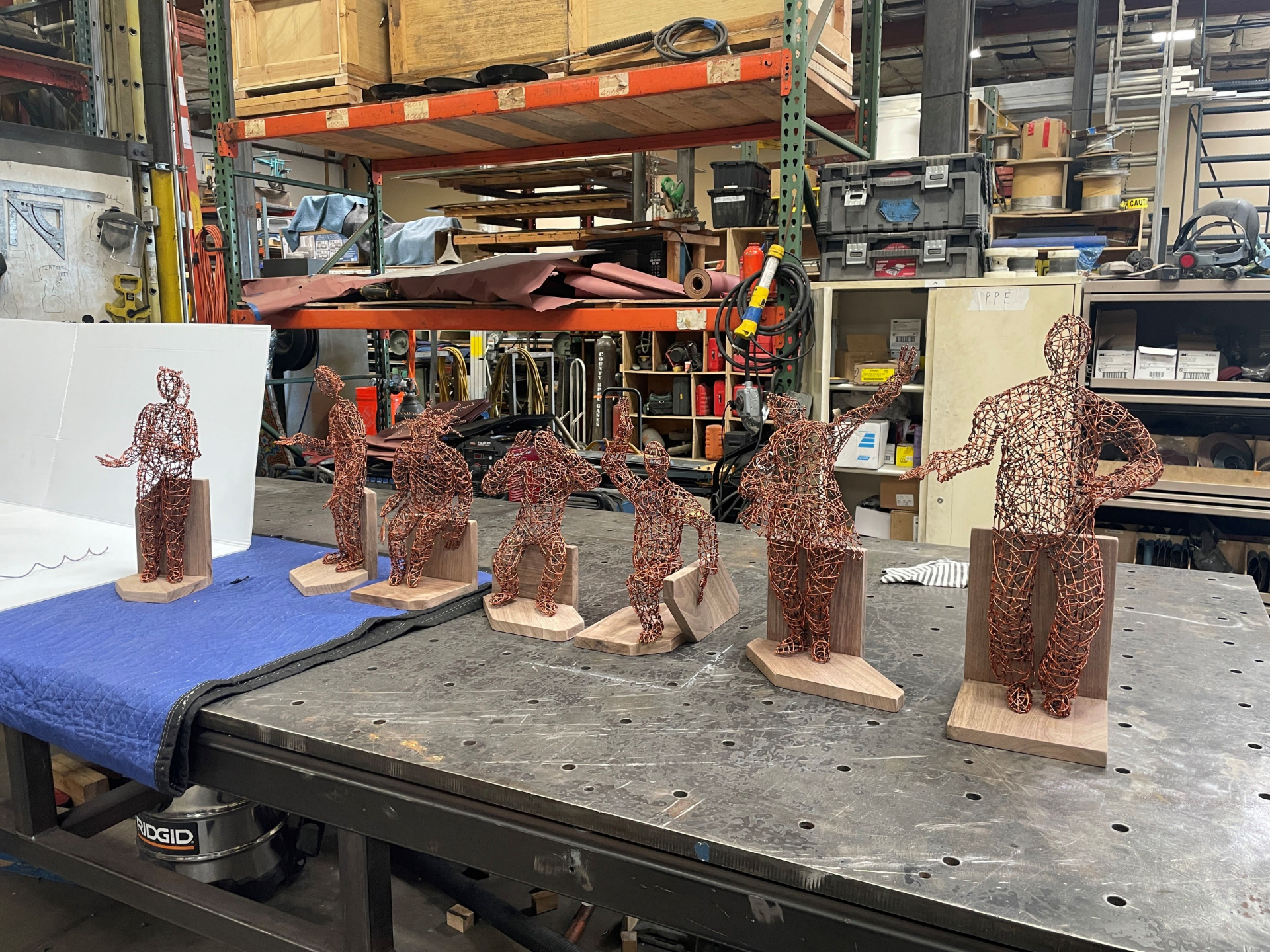




1 DANCING COUPLE - FOUNDATION PLAN

SCALE: 3/4"=1'-0"







Project: India Basin Shoreline Park

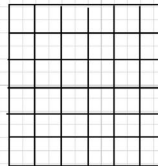
Project #:

Date:

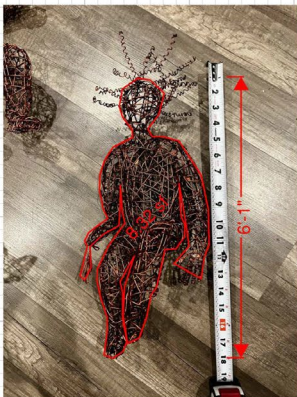
Subject: Weight Calculation

STEEL BAR WEIGHT:
STEEL DENSITY: 0.49 k/cf = 0.283 lb/cu in

Volume of (1) 12" - 1/2" BAR = 12" x PI()x0.25^2 = 2.36 cu in
2.36 cu in x 12 bars (per 1'x1' section) = 28.27 cu in
0.283 lb/cu in x 28.27 cu in = 8 psf (for bars spaced every 2" in a 12"x12" section)



SURFACE AREA WEIGHT CALCULATION:



8.34 sf x 8 psf = 67 lbs

67 lbs (front)
67 lbs (back)
67 lbs (ea side)

Total = 200 lbs (architectural bar)

Total weight assume 300lbs

200 lbs/1067 in = 0.187 lbs/in = 2.25 lbs/ft
(average distributed load on structural bars)

Hot Rolled Steel Section Sets

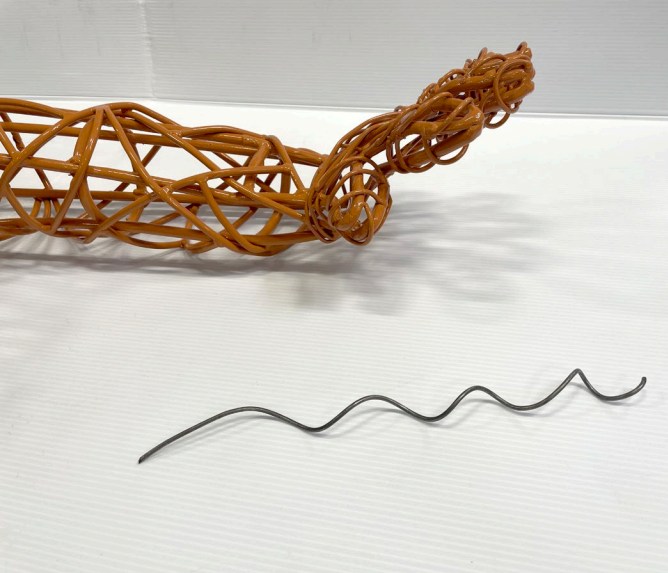
Label	Shape
1 Steel Bars - Torso	3/8"
2 Steel Bars - All Other	1/4"
3 Steel Bars - Supporting Leg	1/2"
4 Steel Bars - Head	1/4"

Section Sets

- Steel Bars - Torso
- Steel Bars - All Other
- Steel Bars - Supporting Leg
- Steel Bars - Head
- RIGID

Rbhu
20XX

SK-2
Oct 26, 2023 at 04:24 PM
2023-10-16 - India Basin Sho...





INEMEC

INEMEC COMPANY, INC.
816-483-3400 inemec.com

1071V-49BR
PINECONE
LOW VOC FLUORONAR SG
REF: SCULPTURE

*This custom display sample was produced under laboratory conditions
and may not always represent the appearance of field applications.*



ART IMPLEMENTATION BUDGET

- **\$212,300** inclusive of all artist's fees, as well as associated expenses for design, fabrication, insurance, transportation, and consultation during installation.
- **\$50,000** allocation for installation managed by SFAC.

PROJECT TIMELINE

Final Design Approval

September 18, 2024

Construction Documentation Approval

Summer 2025

Fabrication Begins

Fall 2026

Artwork Installation

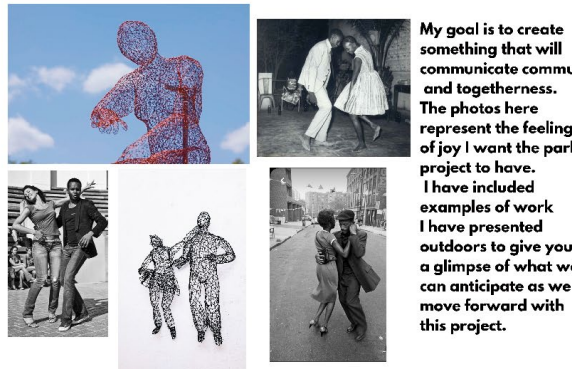
Spring 2026



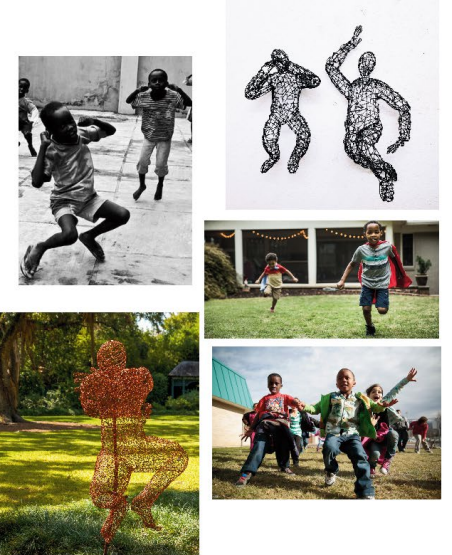
joy personified
 india basin shoreline park
moldboard
 artist: Kristine Mays

“Joy Personified” is a celebration of community.

honoring life in the Bayview - past, present, and future.



My goal is to create something that will communicate community and togetherness. The photos here represent the feelings of joy I want the park project to have. I have included examples of work I have presented outdoors to give you a glimpse of what we can anticipate as we move forward with this project.



Public Comment

Item 9: India Basin Waterfront Park Project
(Previously India Basin Shoreline Park)

Item 9: India Basin Waterfront Park Project **(Previously India Basin Shoreline Park)**

Action

Discussion and possible action to approve the final design of *Joy Personified*, a series of 7 figurative, human-scaled sculptures, by Kristine Mays for the India Basin Waterfront Park Project, located at Hunters Point Blvd. and Hawes St.

Item 10: Staff Report

Discussion

Presenter: Civic Art Collection & Public Art Program Director Mary Chou
Presentation Time: Approximately 5 minutes

Public Comment

Item 10: Staff Report

Item 11: New Business and Announcements

Discussion

(This item is to allow Commissioners to introduce new agenda items for consideration.)

Public Comment

Item 11: New Business and Announcements

Item 12: Adjournment

Action