

Contests on your November 5 ballot

Your November 5 ballot will consist of multiple cards with all of the following federal, state, and local contests: U.S. President and Vice President, U.S. Senator, U.S. Representative, State Senator, State Assemblymember, Mayor, City Attorney, District Attorney, Sheriff, Treasurer, Board of Education Members, Community College Board Members, as well as state and local measures.

For voters living in odd-numbered supervisorial districts* (1,3,5,7,9 and 11), their ballots will also include a Board of Supervisors contest.

For voters living in BART Districts 7 or 9*, their ballots will also include a BART Board contest.

**To view your current voting districts, go to sfelections.gov/myvotingdistrict.*

**With so many contests,
you may want to start your research early!**

Make voting easier with these additional online tools!

- ✓ Map out your voting plan: sfelections.gov/voteready
- ✓ Check your information, track your ballot, or request a new one: sfelections.gov/voterportal
- ✓ Sign up to receive ballot notifications: wheresmyballot.sos.ca.gov
- ✓ Learn about election security: sfelections.gov/security
- ✓ View preliminary and final election results: sfelections.gov/results

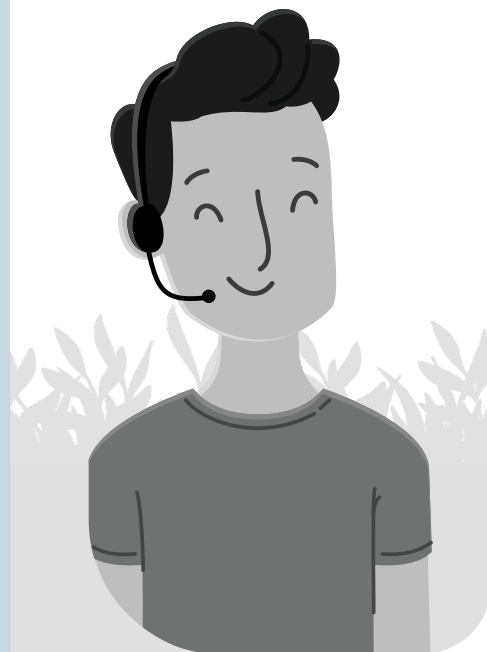
Be a poll worker!

You can help your community and earn up to \$295! We hire over 2,000 poll workers – many bilingual – for every election. To apply, go to sfelections.gov/pwa or call (415) 554-4395.

Observe election processes

You can observe election processes in-person or via live streaming. To view a calendar of observable processes, go to sfelections.gov/observe or call (415) 554-4375.

We are always ready to answer your questions!



English: (415) 554-4375
Español: (415) 554-4366
中文: (415) 554-4367
Filipino: (415) 554-4310
TTY: (415) 554-4386

sfvote@sfgov.org
sfelections.gov

Department of Elections
1 Dr. Carlton B. Goodlett Pl.
City Hall, Room 48
San Francisco, CA 94102

    / [sfelections](https://sfelections.gov)

November 5, 2024 Consolidated General Election



**Cast your ballot,
make your choices!**



This brochure will help you learn about your voting options, contests on your ballot, and more!

Need to register to vote or update your information, such as your address? Go to registertovote.ca.gov or ask us for a paper registration form.

Need help? Call us at (415) 554-4375, email sfvote@sfgov.org, or visit our office in City Hall, Room 48. To receive official election news and updates directly in your inbox, subscribe at sfelections.gov/trustedinfo.

Ranked-choice voting

San Franciscans will use ranked-choice voting to fill the offices of Mayor, City Attorney, District Attorney, Sheriff, Treasurer, and Board of Supervisors' members in Districts 1, 3, 5, 7, 9, and 11. This voting method eliminates the need to conduct a separate run-off election.

You can rank up to ten candidates in order of preference by filling in ovals from left to right.

Mark the 1st column for your 1st choice candidate
 Mark the 2nd column for your 2nd choice candidate
 Mark the 3rd column for your 3rd choice candidate
 And so on...

To vote for a write-in candidate, write the name in the space at the end of the candidate list and fill in the oval for the rank.

	1st Choice	2nd Choice	3rd Choice	4th Choice	5th Choice
Pepper	<input type="radio"/>	<input type="radio"/>	<input type="radio"/>	<input type="radio"/>	<input checked="" type="radio"/>
Broccoli	<input checked="" type="radio"/>	<input type="radio"/>	<input type="radio"/>	<input type="radio"/>	<input type="radio"/>
Carrot	<input type="radio"/>	<input type="radio"/>	<input checked="" type="radio"/>	<input type="radio"/>	<input type="radio"/>
Spinach	<input type="radio"/>	<input checked="" type="radio"/>	<input type="radio"/>	<input type="radio"/>	<input type="radio"/>
Onion	<input type="radio"/>	<input type="radio"/>	<input type="radio"/>	<input type="radio"/>	<input type="radio"/>
Corn	<input type="radio"/>	<input type="radio"/>	<input type="radio"/>	<input checked="" type="radio"/>	<input type="radio"/>

To make sure we can count all of your choices: Do not rank more than one candidate per column. If you make a mistake, ask a poll worker, call (415) 554-4375, or log into sfelections.gov/voterportal, to request a replacement ballot.

To learn more about ranked-choice voting:

- ✓ Practice marking a ranked-choice contest and get immediate feedback at sfelections.gov/practice
- ✓ View the presentation on ranked-choice voting at sfelections.gov/rcv
- ✓ Read your Voter Information Pamphlet (mailed in early October).

Many ways to vote!

You can vote by mail, at City Hall, or at the polls. All methods are secure and accessible.



1. Vote early by mail

In October, we will mail vote-by-mail packets to all local voters and also open the accessible vote-by-mail system at sfelections.gov/access. The packet will have a ballot, instructions, an "I Voted!" sticker, and a postage-paid return envelope.

Whether you use a regular or accessible vote-by-mail ballot, you will need to complete three steps:

	Paper vote-by-mail ballot	Accessible vote-by-mail ballot
1 Mark your ballot	Read the instructions on each ballot card to make your selections.	Log into sfelections.gov/access and follow the instructions to make your selections.
2 Prepare your envelope	Remove receipts and place cards in your ballot return envelope. Complete and sign the envelope, then seal it.	Print your ballot and place it in your return envelope. Complete and sign the envelope, then seal it.
3 Return your envelope	<ul style="list-style-type: none"> ✓ To be counted, ballots returned by mail must be postmarked by Election Day, November 5 (<i>check mail pickup times if you mail your ballot on Election Day</i>). ✓ To be counted, ballots returned in person must be hand-delivered to an official ballot drop box* or voting site by 8 pm on Election Day, November 5. 	

*Go to sfelections.gov/balлотdropoff to view the locations of the 37 official ballot drop boxes.



2. Vote early at the City Hall Voting Center

Any eligible city resident can register to vote, get or drop off a ballot, or cast an accessible ballot at City Hall. In this election, the Voting Center will be open:

- October 7 - November 4, Mon - Fri, 8 am to 5 pm, (except October 14 holiday)
- October 26 - 27 and November 2 - 3, Sat - Sun, 10 am to 4 pm
- Election Day, Tuesday, November 5, 7 am to 8 pm



3. Vote at your polling place on Election Day

Any eligible city resident can register to vote, get or drop off a ballot, or cast an accessible ballot at a neighborhood polling place. 501 polling places will be open from 7 am to 8 pm on Election Day, November 5.

To find your assigned polling place, please visit sfelections.gov/myvotinglocation, call (415) 554-4375, or check your Voter Information Pamphlet (mailed in October).