



San Francisco Health Network  
Community Behavioral Health Services

# Behavioral Health Service Overview

## Children, Youth, & Families System of Care



May 16, 2024

Behavioral Health Commission



## Racial Equity & Anti-Racism



## Reflective Leadership/Practice



## Trauma Informed Systems







### Be Kind ~ Stay Curious ~ Grow Together



The way a team plays as a whole determines its success. You may have the greatest bunch of individual stars in the world, but if they don't play together, the club won't be worth a dime.

— Babe Ruth



# Children Youth & Families Services System of Care Overview



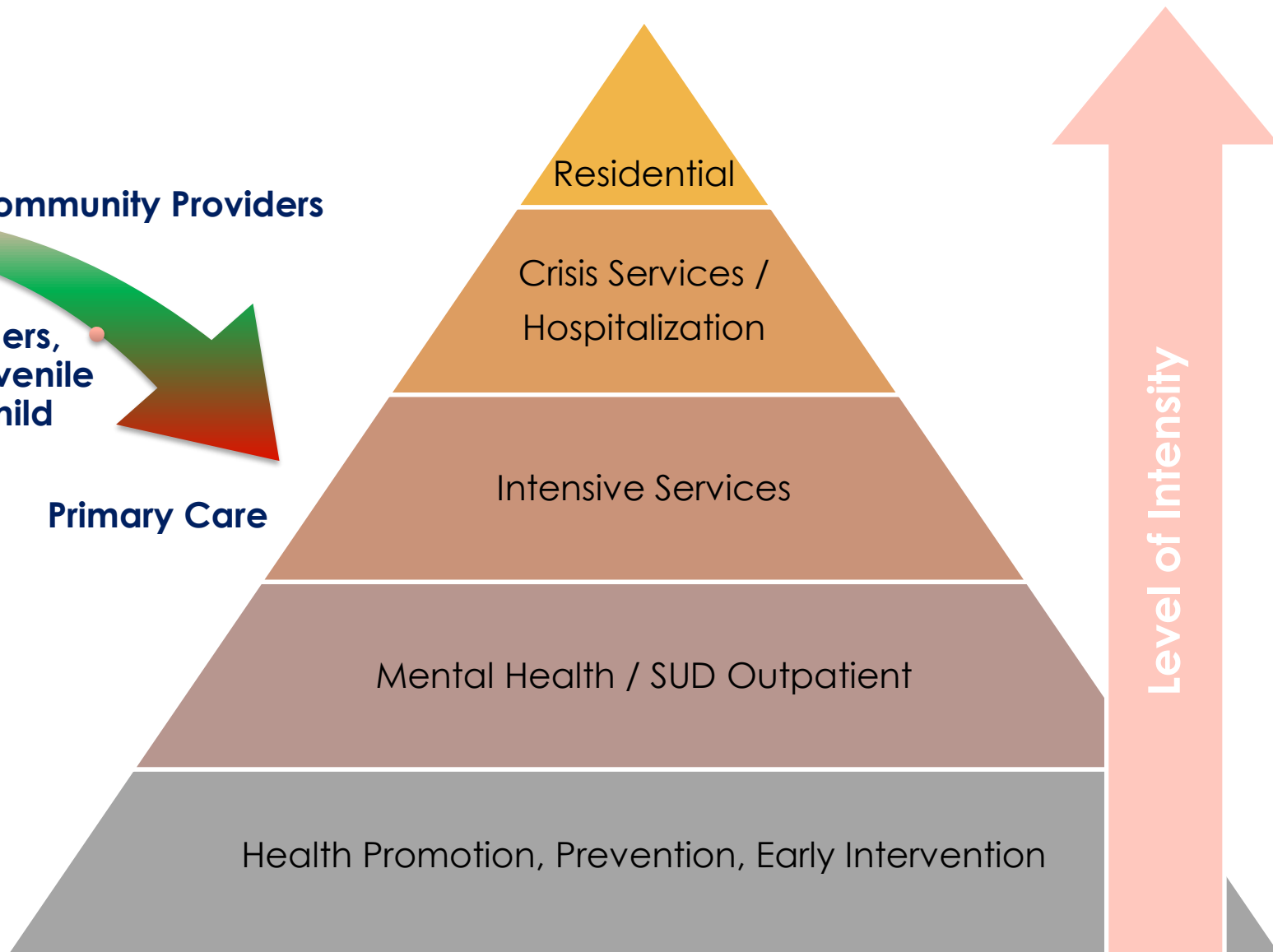
Self

Community Providers

Systems Providers,  
e.g., Schools, Juvenile  
Probation & Child  
Welfare

Primary Care

**Points of Entries  
for Children,  
Youth &  
Families to  
Access System  
of Care**





## Health Promotion, Prevention, Early Intervention

- Early Childhood Mental Health Consultation
- SFUSD High School Wellness Centers
- MHSF Funded School Based Prevention
- LEGACY
- Parent Training Institute
- Fuerte Prevention Program for Latine and other newcomer youth
- Kuumba Healing Project for Black/AA Communities
- Ma'at & DKI for Black/AA Communities
- Seek & Serve Outreach/Engagement for AAPI Families
- SUD Prevention

## Mental Health & SUD Outpatient

- Specialty Mental Health Outpatient
- Network of Civil Service & Contracted SMHS Providers
- ERMHS Services
- Comprehensive Psychological Assessment Services
- Drug Medical Organized Delivery System Outpatient
- Contracted Provider

## Intensive Services

- WRAP Providers
- Intensive Care Coordination & In Home Behavioral Support (ICC/IHBS) Providers
- Intensive Supervision and Clinical Services (ISCS) for Justice Involved Youth
- Multi-Systemic Therapy (MST) for Justice Involved Youth
- Therapeutic Visitation Services (TVS) for Child Welfare Youth
- Dialectical Behavioral Therapy (DBT)
- Family Based Treatment for Eating Disorders (FBT)
- Therapeutic Behavioral Services (TBS)
- SOAR Classrooms
- CEEP Educational Placement

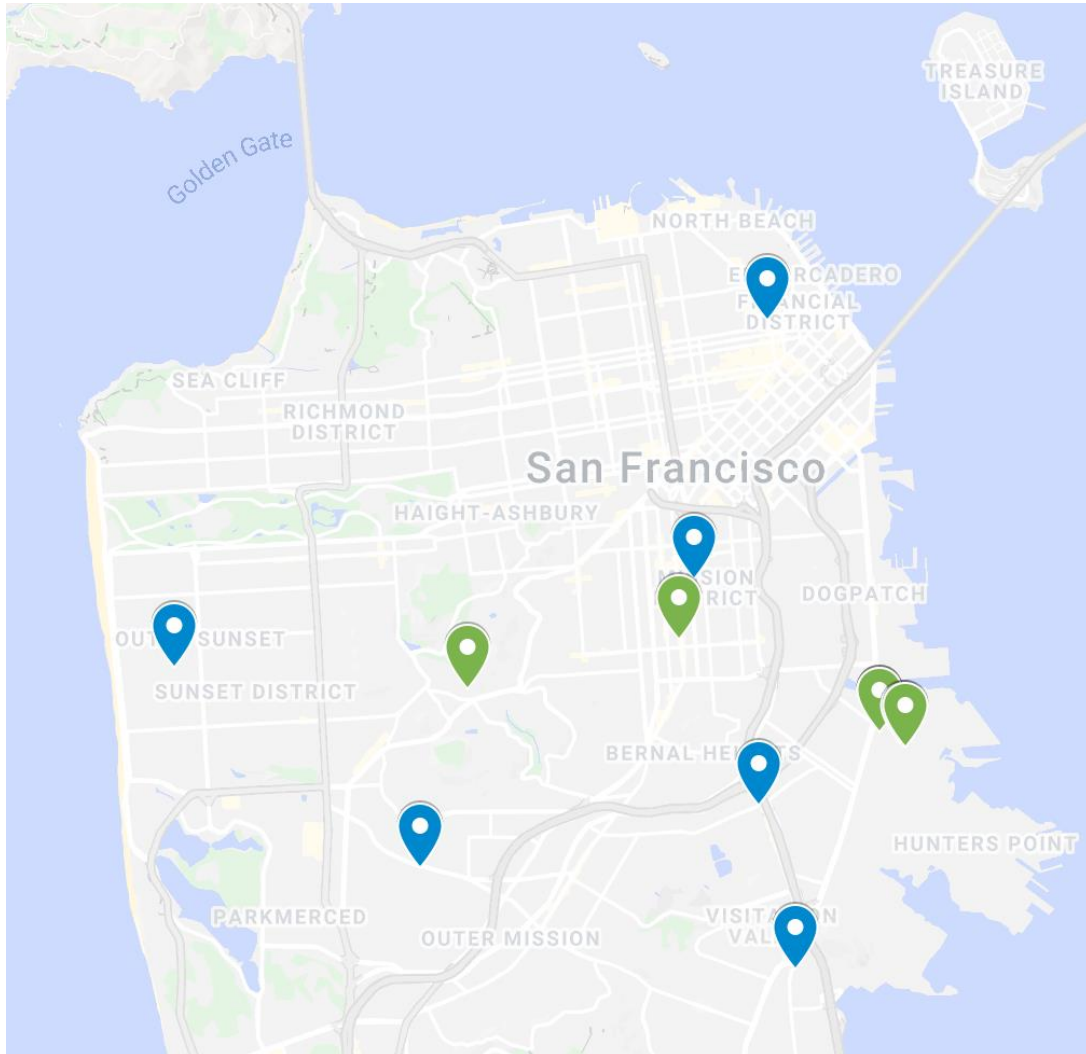
## Crisis Services / Hospitalization

- Seneca 24/7 Mobile Response Team (MRT)
- Edgewood 23 Hour Crisis Stabilization Unit (CSU)
- Edgewood Hospital Diversion (HD)
- DPH Child Crisis – conducts 5585 evaluations and supports inpatient psychiatric hospitalization placements

## Residential / Home Based Placements & In Custody Services

- Intensive Services Foster Care (ISFC) Homes placements for Child Welfare & Juvenile Probation
- Short Term Residential Treatment Programs (STRTP)
- Transitional Housing Program for TAY aging out of foster care system
- Special Programs for Youth (SPY) - BH/Nursing/Medical services within Juvenile Hall





## ■ Outpatient Civil Service Clinics

- Chinatown Child Development Center
- Mission Family Center
- Southeast Child Family Therapy Center (2 Sites)
- OMI Family Center (Comprehensive Clinic)
- Sunset Mental Health (Comprehensive Clinic)

## ■ Specialty Civil Service Clinics / Programs

- Comprehensive Crisis Services – Child Crisis
- Foster Care Mental Health
- Family Mosaic Project
- Lifting Empowering Generation of Children and Youth (LEGACY)
- Special Programs for Youth
- Psychological Assessment Services (PAS)
- Families Rising (FaR) Behavioral Health

*Note:* Many of these sites are co-located; Crisis under own SOC dotted line to CYF

## ■ Other Specialized Services & Teams

- Therapeutic Behavioral Services (TBS) Coordinator
- Parent Training Institute (PTI)
- School-Based Mental Health Administrative Team



# CYF System of Care Partners



## City Departments

- San Francisco Unified School District
- Juvenile Probation Department
- Human Services Agency
- Department of Children, Youth & their Families
- Department of Early Childhood



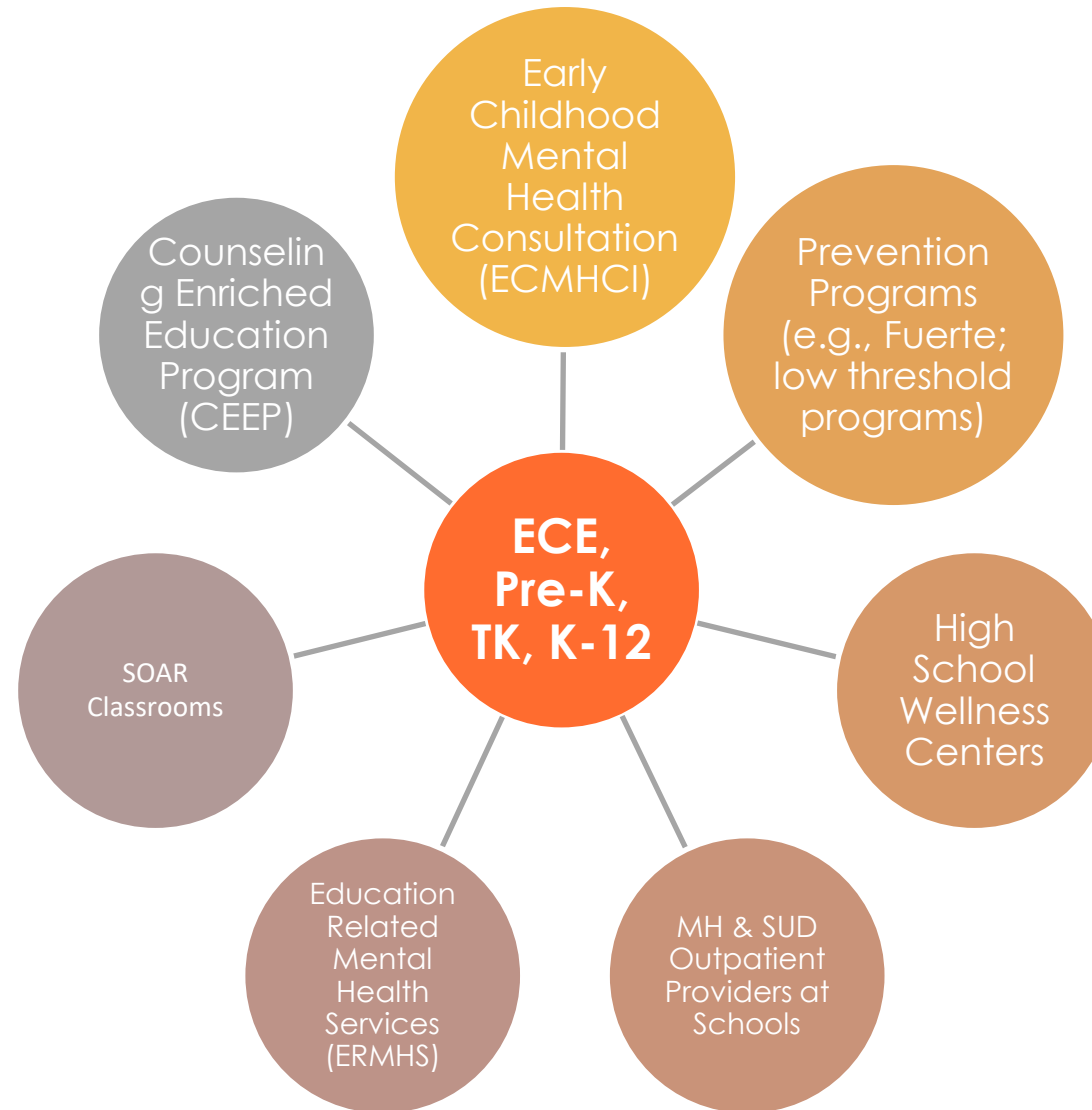
## Other Key Partners

- Non-Specialty Mental Health (Primary Care BH/Beacon)
- Specialty Mental Health Community-Based Contracted Organizations (35-40 contracted)
- Private Provider Network (PPN)
- County, State & Federal Government



# School Based Services

*Structured interface  
between behavioral  
health service system  
and education  
system.*

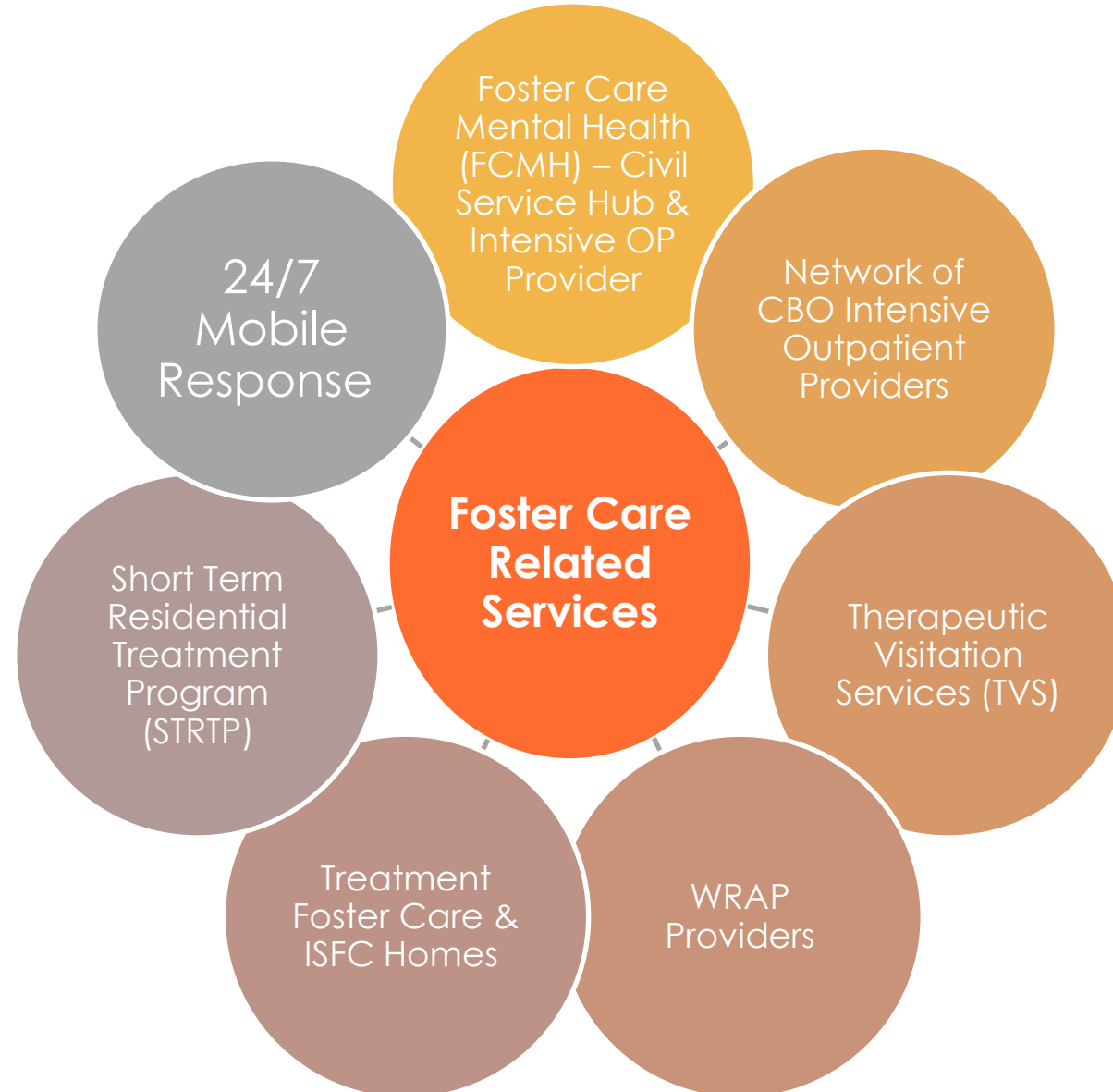






# Child Welfare Services

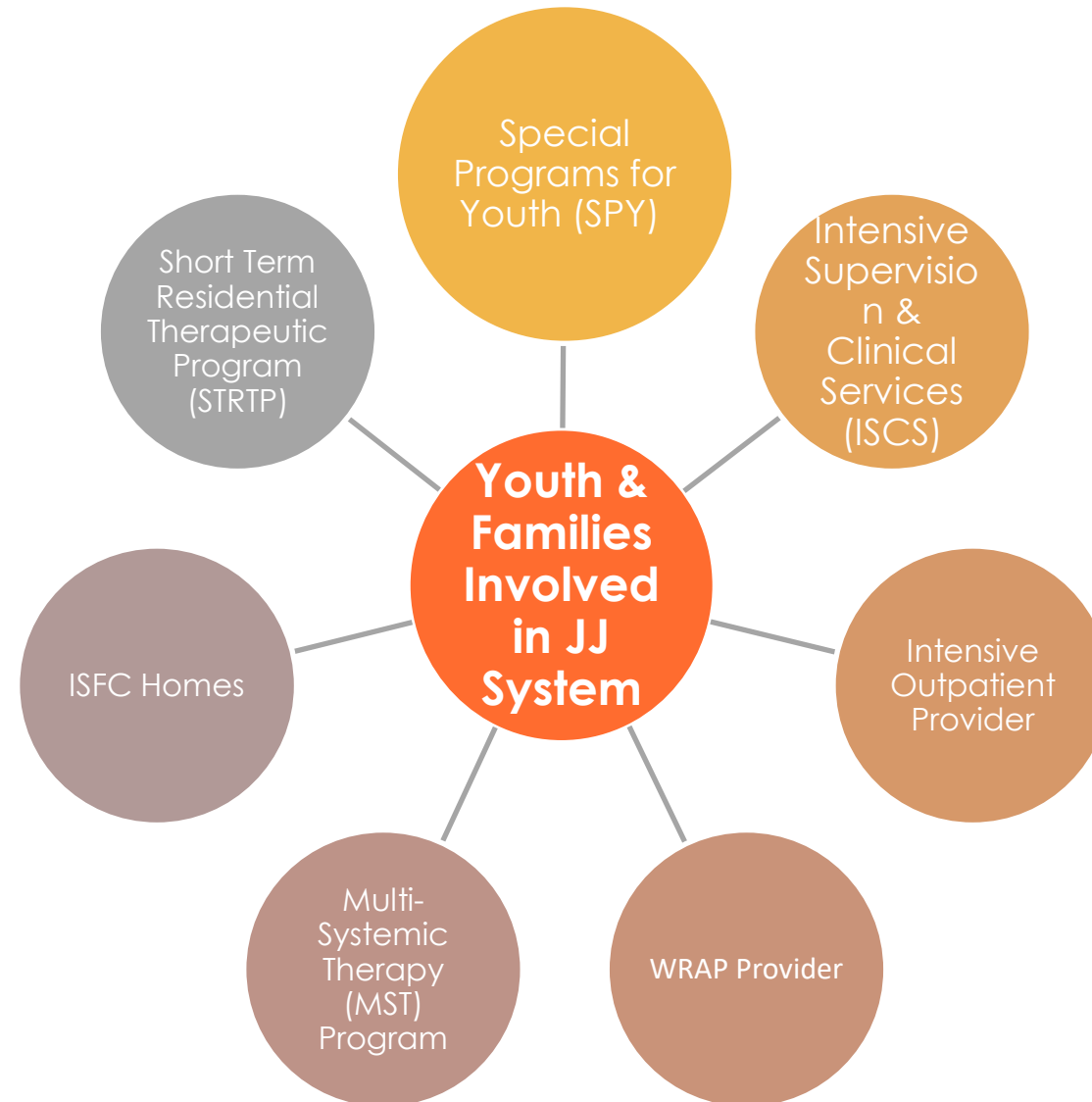
*Structured interface between behavioral health service system and child welfare system.*





# Juvenile Justice Services

*Structured interface  
between behavioral  
health service system  
and juvenile justice  
system.*

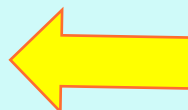




# CYF Practice Improvement Focus, Programs, and Equity Initiatives

## CYF **Racial Equity** Workplan Projects

- Racial Humility trainings by Dr. Ken Hardy (Leadership, Supervisors, Providers through ARCH)
- Kim Constructive Conversations Model (KCCM) Training and Consultations
- Unlearning Racism with JEDI



## CYF Trainings and Programs on **Cultural Adaptation and Cultural Responsiveness**

- Anti-Racist and Culturally Humble (ARCH) Learning and Training Academy
- Pride Series (June)
- Suicide Prevention Series (Sept)
- CYF TIPs Website Diversity Tools for Cultural-Adaptation



## TeleBehavioral Health Trainings, Consultations, Support, and Platforms

- Trainings/Consultations on Telepractice with children and youth; and with BIPOC clients
- Ongoing support and resourcing to CYF programs
- Telepractice Tools: Camp Cope-A-Lot, Apps

## CYF EBP-informed Programs

- EBP Trainings (CBT, DBT, TF-CBT)
- Transdiagnostic CBT consultations
- DBT-informed consultations
- CBT and DBT Skills Groups
- DBT Clinic
- SAFETY-A Suicide Intervention
- Eating Disorders Clinic
- Triple-P groups at PTI
- FFT (started FY 23-24)
- PCIT (starts around FY 24-25)
- Gender Affirmative Model
- Clinical online resources hub:

## Tools to Improve Practice

T. I. P. s and Clinical Practice Guidelines for Working with Children, Youth, and their Families







# Questions? Thoughts?

