



# 2023 SERVICES ALLOCATION PLAN (SAP) & 24-29 REQUEST FOR PROPOSALS (RFP)

Service Providers Working Group 2/22/23



# DCYF's Land Acknowledgement

---

The San Francisco Department of Children, Youth and Their Families (DCYF) acknowledges that it carries out its work on the unceded ancestral homeland of the Ramaytush Ohlone, the original inhabitants and stewards of the San Francisco Peninsula. As the government agency that stewards the Children and Youth Fund, we accept the responsibility that comes with resources derived from property taxes upon unceded and colonized land. We recognize the history and legacy of the Ramaytush Ohlone as integral to how we strive to make San Francisco a great place for life to thrive and children to grow up.

# Agenda

---

- Opening (Maria)
- SAP, RFP & Results Framework Presentation (Aumijo)
- Questions & Answers (Sherrice)
- Next Steps & Closing (Jasmine)

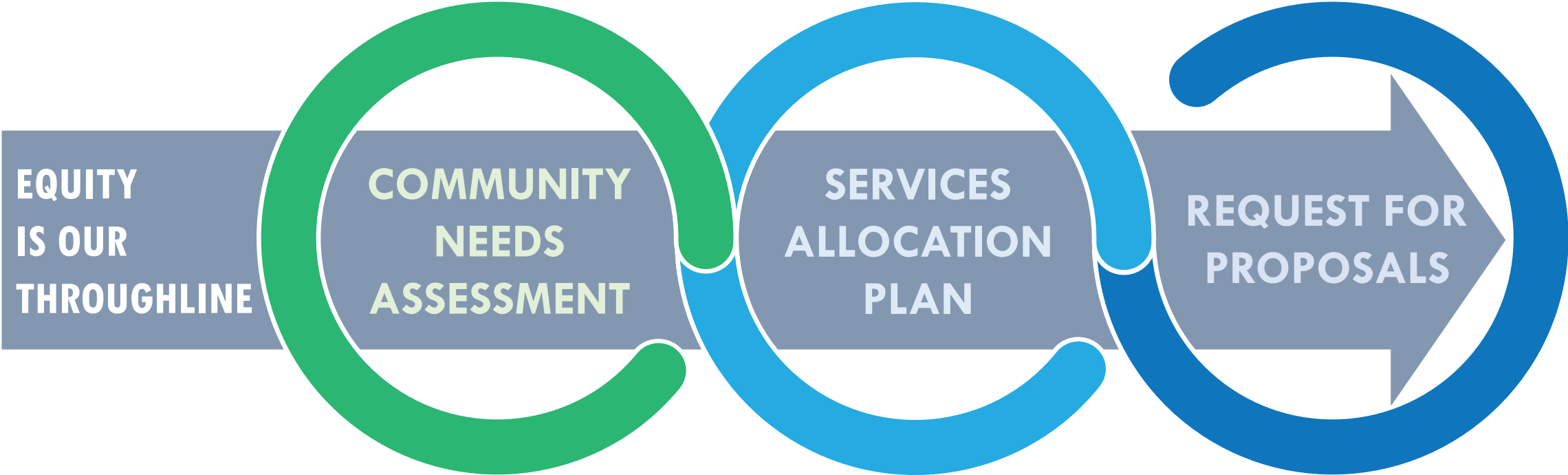


DCYF administers  
the Children & Youth Fund,  
San Francisco's powerful  
investments for children,  
youth, TAY & their families



# DCYF Planning Cycle

DCYF operates according to a 5-year funding cycle that includes 3 planning phases:



Understanding needs, experiences and disparities through direct engagement with children, youth, TAY and families

Allocating resources to address CNA findings in coordination with City and SFUSD partners

Selecting CBOs able to provide quality services that address needs affecting children, youth, TAY and families

[CLICK TO ACCESS: 2022 CNA](#)



**Using different  
approaches to  
achieve different results**

The [2022 CNA](#) showed that many of the needs and disparities that have affected the City's children, youth, TAY and their families for years continue to persist.

As we enter the 24-29 funding cycle we recognize that we cannot do the same things and expect different results. Instead, we must **operate differently**, with both **intention** and **collaboration**.

# Services Allocation Plan (SAP) & Request for Proposals (RFP)

To develop the 2023 SAP and 24-29 RFP DCYF is combining internal Service Allocation and RFP workgroups with external Partner Workgroups with City and SFUSD partners.

## SERVICE ALLOCATION/ RFP WORKGROUPS

- Understand CNA findings
- Identify gaps
- Develop & refine funding approaches
- Determine target populations
- Develop RFP process, requirements & questions



## PARTNER WORKGROUPS

- Understand CNA findings
- Develop knowledge of service landscape & gaps
- Align approaches across partners
- Discuss current and ongoing coordination



## 2023 SERVICES ALLOCATION PLAN & 24-29 RFP

- Intentional funding that addresses CNA findings
- Ongoing coordination with partners to support better outcomes for children, youth, TAY and families

# Our Vision for the Funding Cycle

- Larger grants helps CBOs solidify their workforce and strengthens the field
- Increased flexibility allows grantees to provide services that meets the needs of participants and families
- Improved data collection and evaluation helps DCYF better understand the impact of our funding approaches
- **Intentional funding plus ongoing coordination equals better outcomes for children, youth, TAY and families**





# Preparing to Apply to the 24-29 RFP

- Become a City Supplier
- Understand and comply with the CA Office of Attorney General's regulations for charities
- Sign up for DCYF's newsletter
- Familiarize yourself with DCYF's Service Areas with our Service Area Guide on our SAP page
- Attend RFP related technical assistance starting in May 2023
- Think about how the services your agency provides fit within our Results framework



# 2023 SAP & 24-29 RFP Timeline

JJPA  
Convening  
Feb 17<sup>th</sup>

All Grantee  
Meeting  
Mar TBD

OAC Mtg:  
SAP Vote  
May 8<sup>th</sup>

BOS SAP  
Vote  
Jun 9<sup>th</sup>

24-29 RFP  
AWARDS  
ANNOUNCED  
MAR TBD

FEB 23

MAR 23

APR 23

MAY 23

JUN 23

JUL 23

MAR 24

SPWG  
Convening  
Feb 22<sup>nd</sup>

OAC Mtg:  
SAP Release  
Apr 10<sup>th</sup>

RFP  
Related TA  
May-July

24-29 RFP  
RELEASE  
JULY TBD

YWD Workgroup | Justice Partners Workgroup | Mental Health Workgroup

Compile, Write & Align SAP

Develop, Write & Align RFP

# DCYF'S RESULT AREAS

A man with glasses and a beard is holding a baby. A young girl is leaning on a wooden structure. The background is a gradient of green and blue.

**CHILDREN & YOUTH ARE SUPPORTED BY NURTURING FAMILIES & COMMUNITIES**

**CHILDREN & YOUTH ARE PHYSICALLY & EMOTIONALLY HEALTHY**

A man with a black headband is looking at a woman who is speaking into a microphone. The background is a gradient of blue and green.

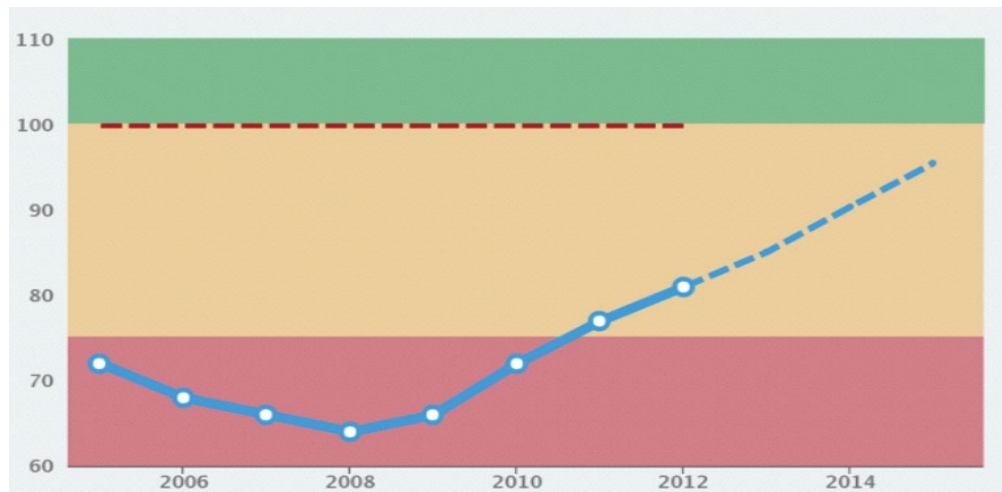
**CHILDREN & YOUTH ARE READY TO LEARN & SUCCEED IN SCHOOL**

**YOUTH ARE READY FOR COLLEGE, WORK & PRODUCTIVE ADULTHOOD**

# Guiding Frameworks

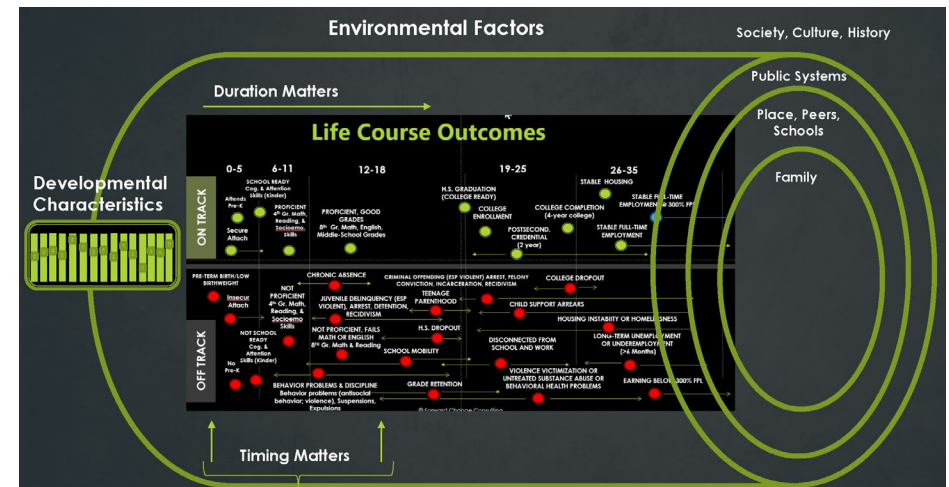
Development of our Result Areas and the services they contain was informed by 2 frameworks:

## Results-Based Accountability



Used to create Results Areas during 2017 SAP process.  
Current process adapted from RBA.

## Life Course Framework



Helps us think about services needed by developmental stage as well as approaches for both on and off-track youth and TAY

Click to Access: [Life Course Framework Presentation](#)

Conditions needed for children,  
youth, TAY & families...

...which make these  
results possible

in their families  
& communities

within  
themselves



Children & Youth Are  
Supported By Nurturing  
Families & Communities

Children & Youth Are  
Physically & Emotionally  
Healthy

Children & Youth Are  
Ready To Learn &  
Succeed In School

Youth Are Ready For  
College, Work &  
Productive Adulthood

# CITYWIDE/ UNIVERSAL NEED

All SF children, youth, TAY and their families

## CONCENTRATED NEED

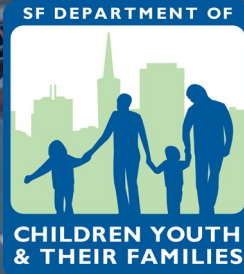
## CHARACTERISTICS OF INCREASED NEED

- African American, American Indian/ Alaska Native, Hispanic/LatinX & Pacific Islander children, youth, TAY & families
- Low-income Asian children, youth, TAY & families
- Families economically impacted by COVID
- Individuals with disabilities & their families

- English Learner
- Foster Youth
- LGBTQQ
- Teen Parent
- Under-housed
- Undocumented
- Children of Incarcerated Parents
- Justice System Involvement
- Exposure to Violence, Abuse or Trauma
- Academic Underperformance or Disconnect from School



Children & youth are supported by nurturing families & communities





# CHILDREN & YOUTH ARE SUPPORTED BY NURTURING FAMILIES & COMMUNITIES

Associated with programs, resources, supports and activities that increase the ability for families to nurture their children and for communities to be safe, connected and engaged.



0 - 5



6 - 13



14 - 17



18 - 24

## DCYF LANES

### OUR LANE

- Caring Adults
- Social Emotional Learning
- Community Building & Engagement
- Community Events & Activities
- Family Support Programs
- Access To Resources

### OUR LANE WITH PARTNERS

- Childcare (DEC)
- Family Resource Centers (DEC)
- Child Welfare (HSA)
- Resources For Basic Needs (HSA)
- Economic Supports & Resources (HSA, MOHCD, HRC)
- Violence Prevention & Response (DPH, MYR)
- Supports For Homeless Families (HSA/HSH)

### NOT OUR LANE

- Public Safety (SFPD, DA, PD)
- Housing (HSH, HSA)





## CURRENT SERVICES WITH PRIMARY IMPACT

### FAMILY EMPOWERMENT

#### FUNDING STRATEGIES

Community Collaboratives

#### DCYF INITIATIVES

Safe & Sound Talkline

#### PARTNERSHIPS

Family Resource Centers (DEC)

### JUSTICE SERVICES

#### PARTNERSHIPS

Street Violence Intervention Prgm. (DPH)

### MENTORSHIP

#### FUNDING STRATEGIES

Mentorship

### OUTREACH & ACCESS

#### DCYF INITIATIVES

Our415.org  
Resource Fairs

Click to Access: [DCYF's Service Area Guide](#)

**Children & youth  
are physically &  
emotionally healthy**





# CHILDREN & YOUTH ARE PHYSICALLY & EMOTIONALLY HEALTHY

Associated with programs, resources, supports and activities that promote physical, emotional, behavioral and mental health as well as healing from trauma.



0 - 5



6 - 13



14 - 17



18 - 24

## DCYF LANES

### OUR LANE

Caring Adults  
Social Emotional Learning  
CBO Based Sports Programs  
CBO Based Wellness Programs

### OUR LANE WITH PARTNERS

Mental & Behavioral Health (DPH)  
Physical Fitness And Wellness (RPD, DPH)  
Healing & Trauma (DPH)  
Food & Nutrition (HSA, DPH)  
Health Education Programs (DPH)

### NOT OUR LANE

Primary & Dental Care (DPH)



## CURRENT SERVICES WITH PRIMARY IMPACT

### EMOTIONAL WELL BEING

#### PARTNERSHIPS

Black/African Amer. Mental Health Init. (DPH)

TAY System of Care (DPH)

Wellness Initiative (DPH)

### ENRICHMENT, LEADERSHIP & SKILL BUILDING

#### FUNDING STRATEGIES

Sports & Physical Activity

### JUSTICE SERVICES

#### PARTNERSHIPS

Intensive Supervision & Clinical Support (DPH)

### OUTREACH & ACCESS

#### DCYF INITIATIVES

Nutrition Programs

**Children & youth  
are ready to learn  
& succeed in school**





## CHILDREN & YOUTH ARE READY TO LEARN & SUCCEED IN SCHOOL

Associated with programs, resources, supports and activities that provide opportunities for youth to learn, gain social emotional learning skills, engage educationally and have access to needed supports.



0 - 5



6 - 13



14 - 17

### DCYF LANES

#### OUR LANE

- Caring Adults
- Social Emotional Learning
- CBO Based OST Programs
- CBO Based Academic Supports
- CBO Based Enrichment Programs

#### OUR LANE WITH PARTNERS

- Academic & Literacy Supports & Resources (SFUSD)
- Absenteeism & Truancy (SFUSD)
- Afterschool & Summer Programs (SFUSD, RPD, SFPL)
- Early Care & Education Programs (DEC)
- Safe Passage (SFUSD)

#### NOT OUR LANE

- TK-12 Public Schools (SFUSD)
- School Transportation (SFUSD, MTA)



## CURRENT SERVICES WITH PRIMARY IMPACT

### EARLY CARE & EDUCATION

#### PARTNERSHIPS

Early Learning Scholarships (DEC)

### EDUCATIONAL SUPPORTS

#### FUNDING STRATEGIES

Academic Supports  
Literacy Supports

#### DCYF INITIATIVES

Summer Transitions  
Truancy Assessment & Resource Center

### ENRICHMENT, LEADERSHIP & SKILL BUILDING

#### FUNDING STRATEGIES

Arts & Creative Expression  
Identity Formation

Science, Technology, Engineering & Math  
Service Learning

### OUT OF SCHOOL TIME

#### FUNDING STRATEGIES

Beacon  
Comprehensive Year Round & Summer

#### DCYF INITIATIVES

Summer Together

#### PARTNERSHIPS

Equitable Access (SFUSD)

Click to Access: [DCYF's Service Area Guide](#)



Youth are ready  
for college, work &  
productive adulthood







# YOUTH ARE READY FOR COLLEGE, WORK & PRODUCTIVE ADULTHOOD

Associated with programs, resources, supports and activities that help youth and TAY gain exposure, skills and abilities that prepare them for successful transitions into adulthood.



14 - 17

18 - 24

## DCYF LANES

### OUR LANE

Caring Adults  
Social Emotional Learning  
CBO Based College Prep. Programs  
Justice Involved Programs  
Youth Empowerment Programs

### OUR LANE WITH PARTNERS

YWD Programs (SFUSD, OEWD, HRC)  
Career Oriented Education (SFUSD, CCSF)  
Undocumented Youth Programs (OCEIA)  
Higher Education (CCSF)  
Foster Youth (HSA)  
Financial Empowerment (TTX)

### NOT OUR LANE

Career Employment (OEWD)



# CURRENT SERVICES WITH PRIMARY IMPACT

## EDUCATIONAL SUPPORTS

### FUNDING STRATEGIES

Academic Supports  
Alternative Education

### DCYF INITIATIVES

Free City College  
Summer Transitions  
Truancy Assessment & Resource Center

### PARTNERSHIPS

College & Career Readiness Dual Enrollment  
(SFUSD)

## ENRICHMENT, LEADERSHIP & SKILL BUILDING

### FUNDING STRATEGIES

Arts & Creative Expression  
Identity Formation  
Science, Technology, Engineering & Math  
Service Learning  
Youth Leadership, Engagement & Organizing  
Youth Led Philanthropy



# CURRENT SERVICES WITH PRIMARY IMPACT

## JUSTICE SERVICES

### FUNDING STRATEGIES

Cultural Programming  
Detention Based  
Girls' & Young Women's Programming  
Multi Service  
Young Adult Court Case Management

### DCYF INITIATIVES

Community Assessment & Referral Center

## MENTORSHIP

### FUNDING STRATEGIES

Connective Services

## YOUTH WORKFORCE DEVELOPMENT

### FUNDING STRATEGIES

Career Awareness  
High School Partnerships  
Youth Workforce Development

### DCYF INITIATIVES

MYEEP  
Opportunities for All Intermediary  
SF YouthWorks

### PARTNERSHIPS

Workcreation (RPD)

# Questions & Answers



# Next Steps

- Submit feedback and questions to DCYF about the SAP, RFP or our Results
- Complete the 1-minute SAP PRIORITIES SURVEY and share it with your colleagues and the children, youth, TAY and families you serve
- Attend upcoming Oversight & Advisory Committee Meetings:
  - April 10<sup>th</sup> Meeting: SAP released
  - May 8<sup>th</sup> Meeting: OAC votes on SAP





**Thank you for your continued work with children, youth, TAY and their families!**

