

City & County of San Francisco  
London N. Breed, Mayor



Office of the City Administrator  
Carmen Chu, City Administrator  
David Serrano Sewell, Executive Director  
Office of the Chief Medical Examiner

March 31, 2023

**Subject: Report on Drug and Alcohol Prevalence in Impaired Driving Casework – 2022**

The enclosed report includes drug and alcohol prevalence data on received Driving Under the Influence of Drugs and/or Alcohol (DUID) casework in the City and County of San Francisco for the year 2022. The reports are published by the Office of the Chief Medical Examiner (OCME), Forensic Laboratory Division, to further the OCME's mission to provide neutral data to inform policymakers.

Pertinent for the accurate use of this report is understanding the scope of testing leading to the summarization of the data. The OCME performs [full and comprehensive testing](#) on all DUID casework to mitigate bias, ensure a complete toxicological profile is provided for each case, and to determine the extent of alcohol and drugs exposure within the community. The OCME scope of testing for DUID casework meets and exceeds the national scope and sensitivity standards ([ASB Standard 120](#)) and recommendations ([NSC-ADID Recommendations](#)).

The OCME has consistently met the target of issuing final reports within a month for over 90% of cases, with 92% of cases reported within 30 days in 2022.

Enclosed is a detailed DUID Data Report for 2022. Key findings were:

- One or more intoxicating substance was identified in 99.5% of cases.
- The OCME identified the presence of alcohol in 79.5%, cannabis in 39.2%, and drugs in 51% of cases.
- Polysubstance use was the most common result of DUID casework with 57.7% of all cases positive for any combination of alcohol, cannabis, and/or drugs (e.g., positive for cannabis and alcohol, positive for cannabis and drugs, positive for alcohol, cannabis, and drugs, etc.).

Sincerely,

A handwritten signature in blue ink, appearing to read "Luke N. Rodda".

Luke N. Rodda, Ph.D. MRACI CChem  
Chief Forensic Toxicologist and Director, Forensic Laboratory Division

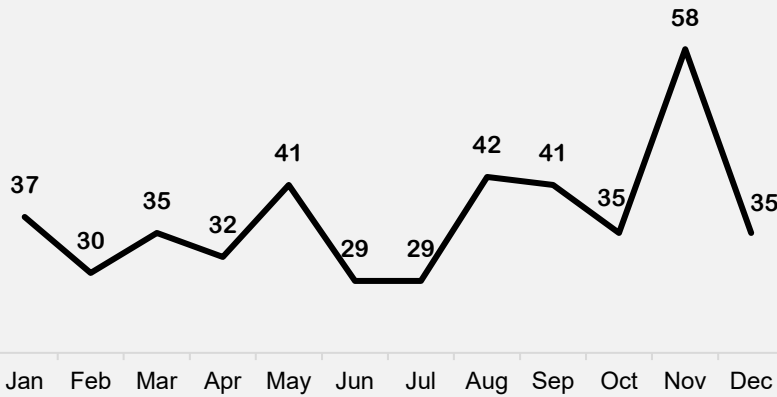
cc: Office of the City Administrator  
enclosures: Driving Under the Influence of Drugs and/or Alcohol (DUID) Data Report – 2022



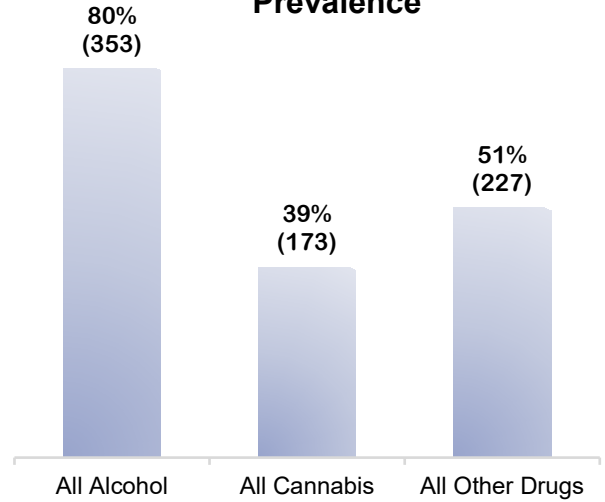
# Driving Under the Influence of Drugs and/or Alcohol (DUID) 2022

444 Submitted Cases

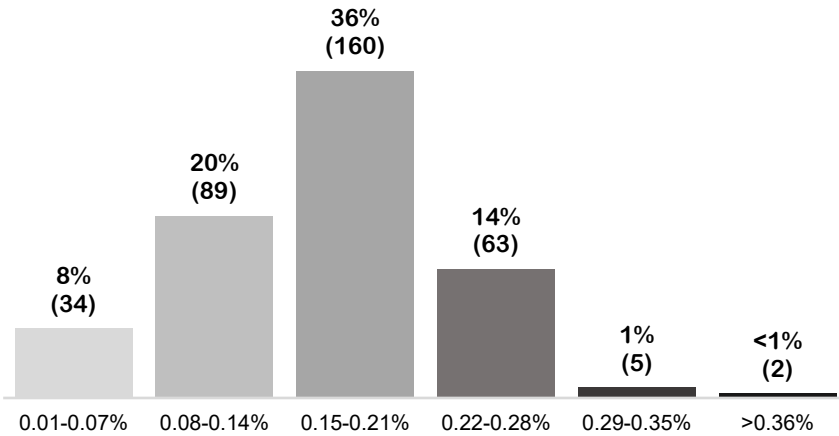
Case Submission by Month



Alcohol Cannabis and Drugs Prevalence



Positive Blood Alcohol Concentrations

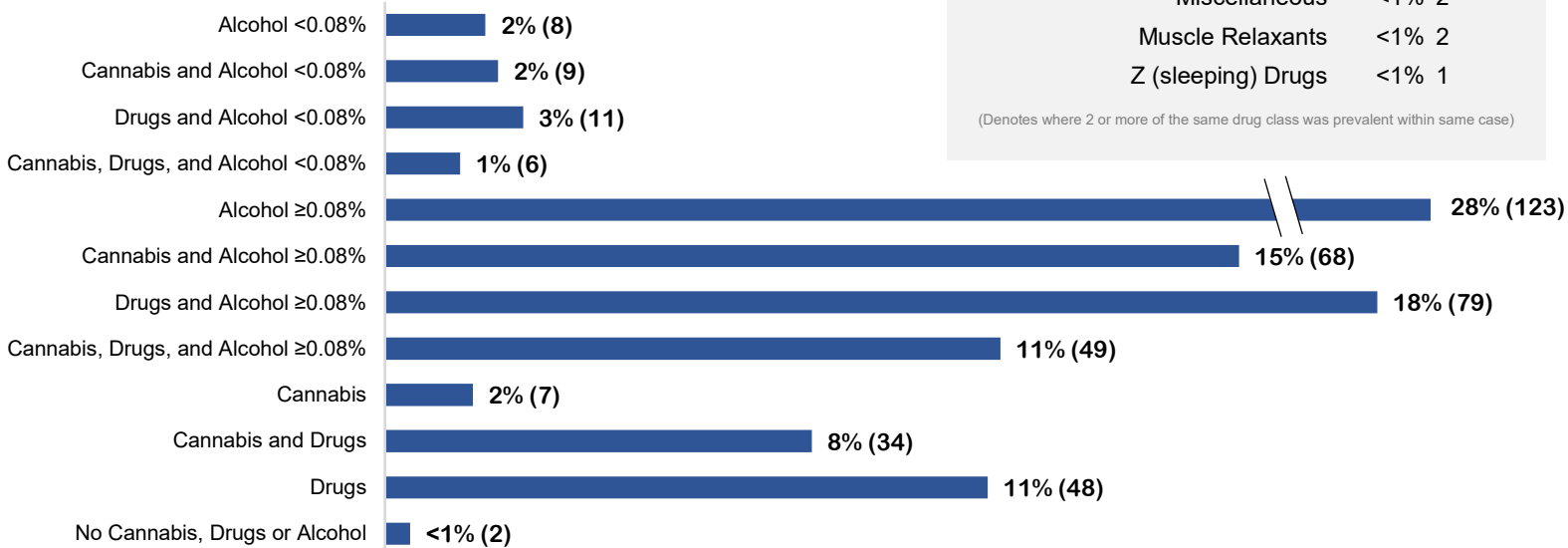


Drug Class Prevalence Cases

Drug Class	Prevalence (%)	Cases
Cannabis	39%	166 (7)
Amphetamines	24%	104 (2)
Cocaine	17%	77
Opioids	15%	43 (24)
Antihistamines	9%	38 (3)
Benzodiazepines	9%	29 (9)
Anticonvulsants	4%	18 (1)
Dissociatives	3%	14 (1)
Anesthetics	2%	7
Hallucinogens	1%	5
Miscellaneous	<1%	2
Muscle Relaxants	<1%	2
Z (sleeping) Drugs	<1%	1

(Denotes where 2 or more of the same drug class was prevalent within same case)

Polysubstance Use





# Driving Under the Influence of Drugs and/or Alcohol (DUID)

## 2022

### 444 Submitted Cases

Drug Prevalence		Cases		Drug Prevalence		Cases	
<b>Amphetamines</b>				<b>Cocaine</b>			
	Methamphetamine	19%	84		Benzoyllecgonine	16%	73
	Amphetamine	16%	71		Cocaine	15%	66
	MDMA (ecstasy)	2%	10		Cocaethylene	10%	46
	MDA	2%	10	<b>Dissociatives</b>			
	Norephedrine/Norpseudoephedrine	2%	8		Norketamine	2%	11
	Ephedrine/Pseudoephedrine	1%	6		Ketamine	2%	10
	Methylphenidate	<1%	1		gamma-Hydroxybutyric Acid (GHB)	1%	3
	Phentermine	<1%	1		Phencyclidine (PCP)	<1%	2
<b>Anesthetics</b>				<b>Hallucinogens</b>			
	Lidocaine	2%	7		Psilocybin	1%	4
<b>Anticonvulsants</b>					Psilocin	1%	3
	Gabapentin	4%	17	<b>Miscellaneous</b>			
	Lamotrigine	<1%	2		Mitragynine	<1%	2
	Pregabalin	<1%	1	<b>Muscle Relaxants</b>			
<b>Antihistamines</b>					Carisoprodol	<1%	2
	Diphenhydramine	6%	25	<b>Opioids</b>			
	Hydroxyzine	2%	8		Fentanyl	10%	44
	Doxylamine	1%	6		Naloxone	2%	10
	Promethazine	1%	3		Dextromethorphan/Levomethorphan	2%	9
	Chlorpheniramine	<1%	2		Codeine	2%	8
<b>Barbiturates</b>					Morphine	2%	8
	Phenobarbital	1%	3		Heroin	1%	6
<b>Benzodiazepines</b>					Methadone	1%	6
	Alprazolam	3%	13		Dextrorphan/Levorphanol	1%	4
	Midazolam	2%	10		Noroxycodone	1%	3
	Nordiazepam	2%	7		Tramadol	1%	3
	Flubromazepam	1%	5		Buprenorphine	<1%	2
	7-Amino Clonazepam	1%	4		Hydrocodone	<1%	2
	Diazepam	1%	4		Hydromorphone	<1%	2
	Flualprazolam	1%	4		Oxycodone	<1%	2
	Lorazepam	1%	4		Naltrexone	<1%	1
	Clonazepam	<1%	2	<b>Volatiles</b>			
	Etizolam	<1%	2		Ethanol	80%	353
	Chlordiazepoxide	<1%	1	<b>Z (sleeping) Drugs</b>			
	Temazepam	<1%	1		Zolpidem	<1%	1
<b>Cannabis</b>							
	Carboxy THC	38%	170				
	delta-9 Carboxy THC		134				
	delta-8 Carboxy THC		2				
	unspecified Carboxy THC		34				
	Tetrahydrocannabinol (THC)	33%	145				
	delta-9 THC		143				
	delta-8		1				
	unspecified THC		1				
	Tetrahydrocannabinol Acid (THCA)	10%	45				
	Tetrahydrocannabivarinic Acid (THCVA)	9%	39				
	Cannabidiol (CBD)	1%	3				