

Recreation & Park Department

Golden Gate Park Accessibility Commitment Updates

*Mayor's Disability Council
Friday, December 15, 2023*



Inspire, Connect, Play!

Lucas Tobin

ADA Coordinator for Programmatic Access
415-831-6841 rpdaccess@sfgov.org



Accessible Parking



Accessible parking: New Accessible Parking Lot

- **20 spaces accessible parking lot**
- **8 on-street accessible spaces along MLK & Nancy Pelosi**
- **Shuttle Stop at parking lot**



Accessible parking: New Accessible Parking Lot



Accessible parking: Map



Music Concourse Garage



Music Concourse Garage



Music Concourse Garage

- Transfer is still in process
 - Flexible pricing
 - Increase time limit for drop-off/pick-up
 - Additional subsidized parking for Discover and Go and Museums for All pass users
 - Install better wayfinding signage



GGP Shuttle



Transportation Demand Manager (TDM)

Emily Stefiuk



Shuttle

- Shuttle service 7-days/week since March 2022
- Expanded hours for special events
- Accessible with lift
- 3 shuttles Sat/Sun & holidays (~15-minute wait)
- 2 shuttles Mon-Fri (~20-minute wait)



Shuttle



Shuttle: Maps

Google, Apple Maps, and Transit App have been updated

← from Stow Lake Boathouse, 50 Stow La...
to Castro St & 18th St, Castro St, San Fr...

12:24 PM - 1:07 PM
(43 min)

Golden Gate Park Shuttle > 33
12:25 PM from Stow Lake Boathouse
\$3.00 f 2 min

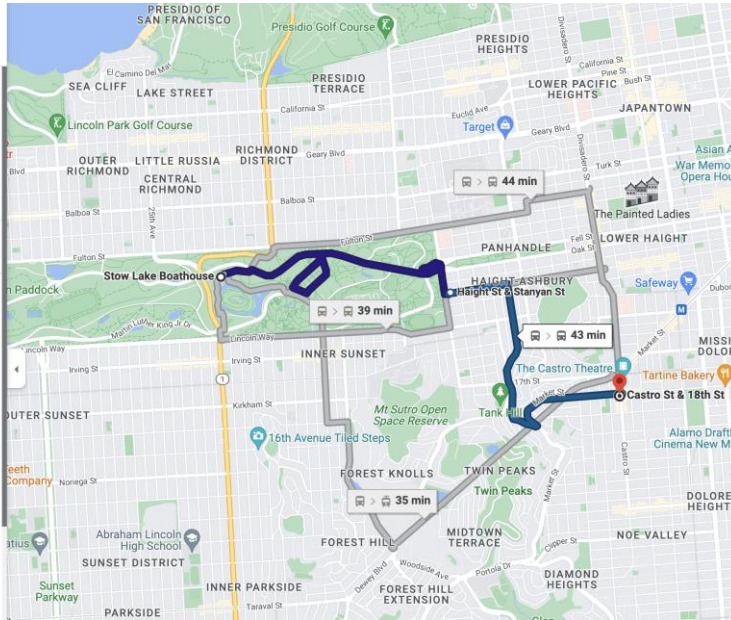
Add to Calendar

12:24 PM ○ Stow Lake Boathouse
50 Stow Lake Dr, San Francisco,
CA 94118

Walk
v About 1 min, 92 ft

12:25 PM ○ Stow Lake Boathouse
Golden Gate Park Shuttle Stow Lake
Boathouse
v 22 min (9 stops)

12:47 PM ○ Haight St & Stanyan St



Google Maps



Ongoing shuttle improvements

- New temporary shuttle signs
- Low-floor vehicle (late 2024)
- Driver training
- Real-time arrivals (testing)
- On-board information
 - Audio and text
 - Maps
- Upgraded shuttle stops
 - Landing pads
 - Permanent benches
 - Pole signs



Marked Paratransit vehicles
allowed on JFK Promenade and
other closed roads



Information and Wayfinding



Information and wayfinding: Wayfinding and Signage

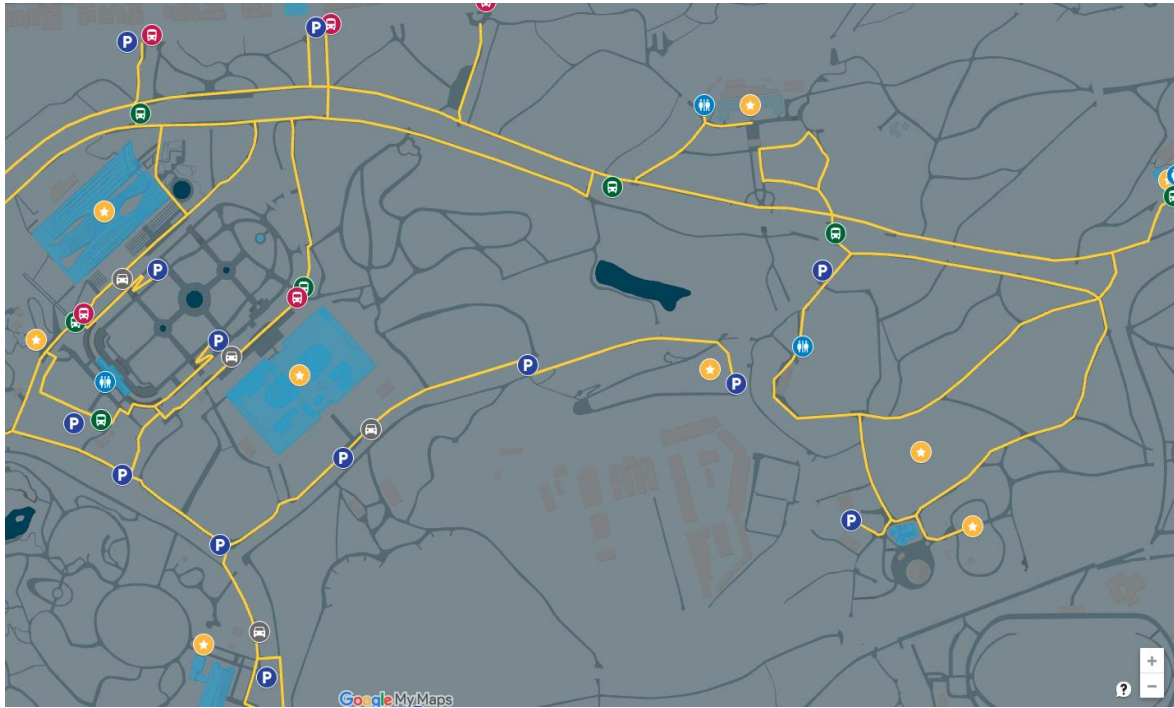
- Misleading signs have been removed
- Signage added as part of projects
 - Parking lot, Stow Lake, Tea Garden
- SF Fellows Team wayfinding project and report completed spring 2023
- USF intern, spring 2024
- Accessibility map and brochure



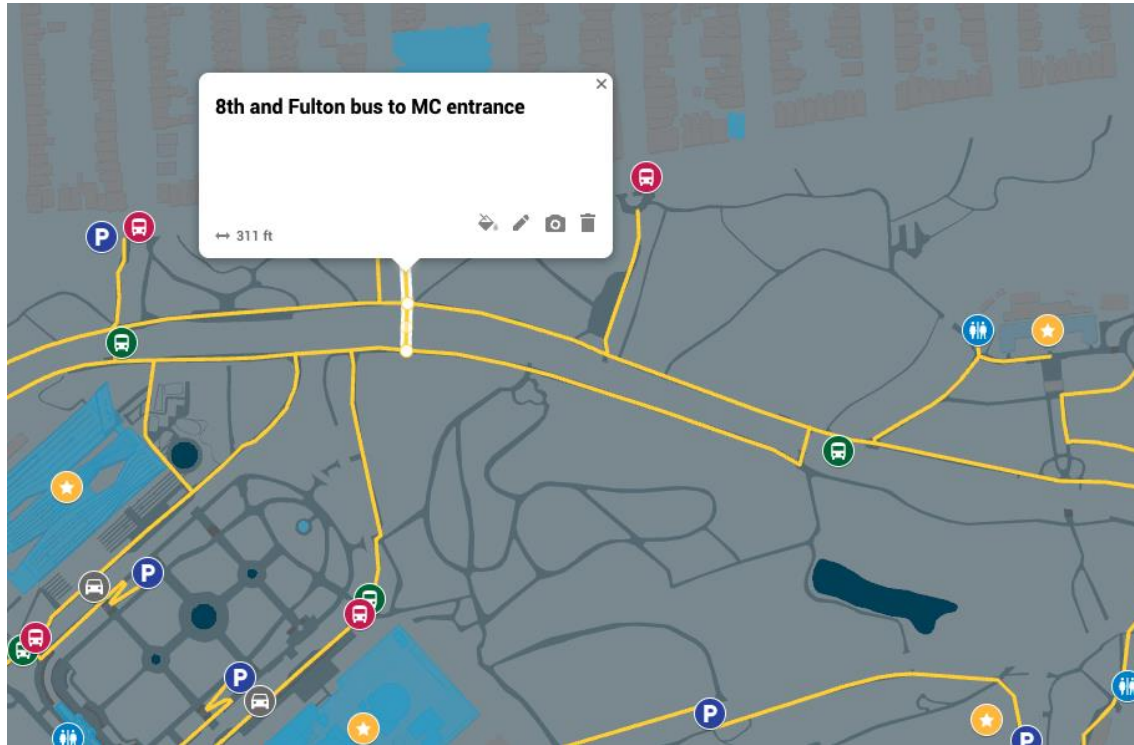
Information and wayfinding: SF Fellows Team



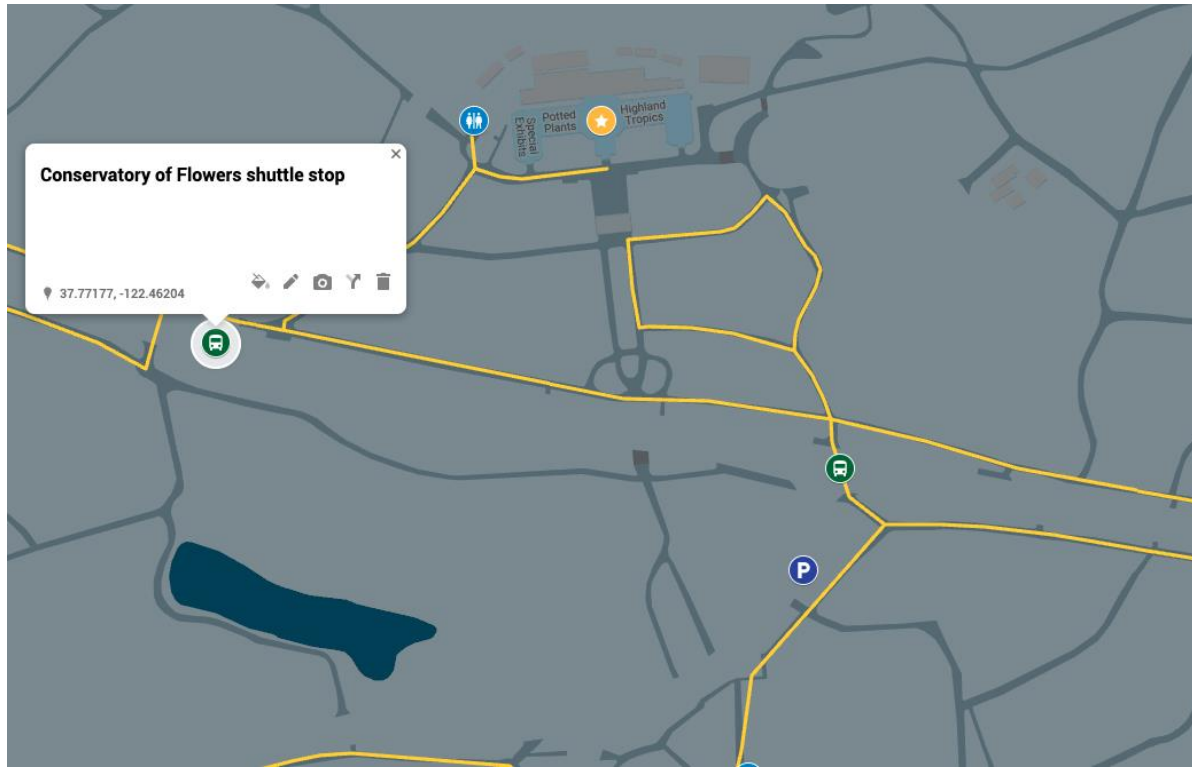
GGP Pathways Usability Map



GGP Pathways Usability Map (Part 1)



GGP Pathways Usability Map (Part 2)



Information and Wayfinding: Website

WCAG 2.0 compliant

SF Digital Accessibility Standards



Information and Wayfinding: Website text directions

Getting to Golden Gate Park by Car

Golden Gate Park is accessible by a wide range of transportation options, including by car. There is currently a car-free route through the park, but much of the park remains accessible by automobile.

[An update on the new traffic pattern for MLK Drive in Golden Gate Park](#)

Where is the car-free route?

The car-free route runs from Stanyan Street at the east end of the park to Ocean Beach and the Great Highway at the west end. The east end of the route includes portions of JFK Drive and Conservatory Drive; the west end of the route includes Overlook Drive, Middle Drive and portions of MLK Drive.



Information and Wayfinding: Website text directions

Sample Text Directions RPD Website

How do I drive to my favorite spots in the park?

Getting to the museums, Japanese Tea Garden and Music Concourse

- From the north: John F. Kennedy Drive is currently closed to vehicular traffic from Kezar Drive to Transverse Drive. Paid parking is available in the Music Concourse garage as of September 21, 2020, which may be accessed from the Fulton Street and 10th Avenue entrance.
- From the south: The Music Concourse Garage can be accessed via Music Concourse Drive, off of MLK Drive near 9th Avenue and Lincoln Way. There is also street parking along MLK Drive and adjacent streets.

Visit the [Getting to the Music Concourse page](#) for more information.



Information and Wayfinding: Information access

RPDAccess@sfgov.org

Phone: 415-831-6834



RPDInfo@sfgov.org



SF311.org

Phone: 311



Outreach and input—Deaf & Disability Communities



Outreach and Input

- Quarterly meetings with MOD
- Updates to MDC as requested
- Most current and upcoming GGP projects informed by disability and senior communities' input and feedback
- Ongoing outreach to disability and Deaf communities about programs and events
- Participation in ADF SF Working Group
- Ongoing collaboration with other agencies
 - DCYF, Support for Families, SFUSD SPED, BORP, CIC



Adaptive Bike Program



Adaptive Bike Program



Adaptive Bike Program



GGP Event Access



Where We are Now: Event Access Plan example—text

Driving to the event

Traffic will be heavy in and around Golden Gate Park during this event. If you drive, we recommend arriving early. Following is information about parking and passenger drop-off.

General information about driving to Golden Gate Park

You can find general information about driving to Golden Gate Park by visiting the [Getting to Golden Gate Park by Car page on our website.](#)

General and Accessible Parking

Information about general and accessible parking can be found on the [Getting to Golden Gate Park by car page on our website.](#) Following is information about accessible parking that may be helpful for the Tree Lighting event:

- Accessible parking near Tree Lighting event—described below and shown on the Accessing Jingle all the way on JFK event map on this page
- Accessible parking is available in the following locations. The location name/cross streets are followed by the number of spaces at that location. Be sure to consider how far you may have to travel from a parking space to your destination, and whether there is a shuttle stop near the parking location. We also recommend arriving early to avoid traffic and find parking.

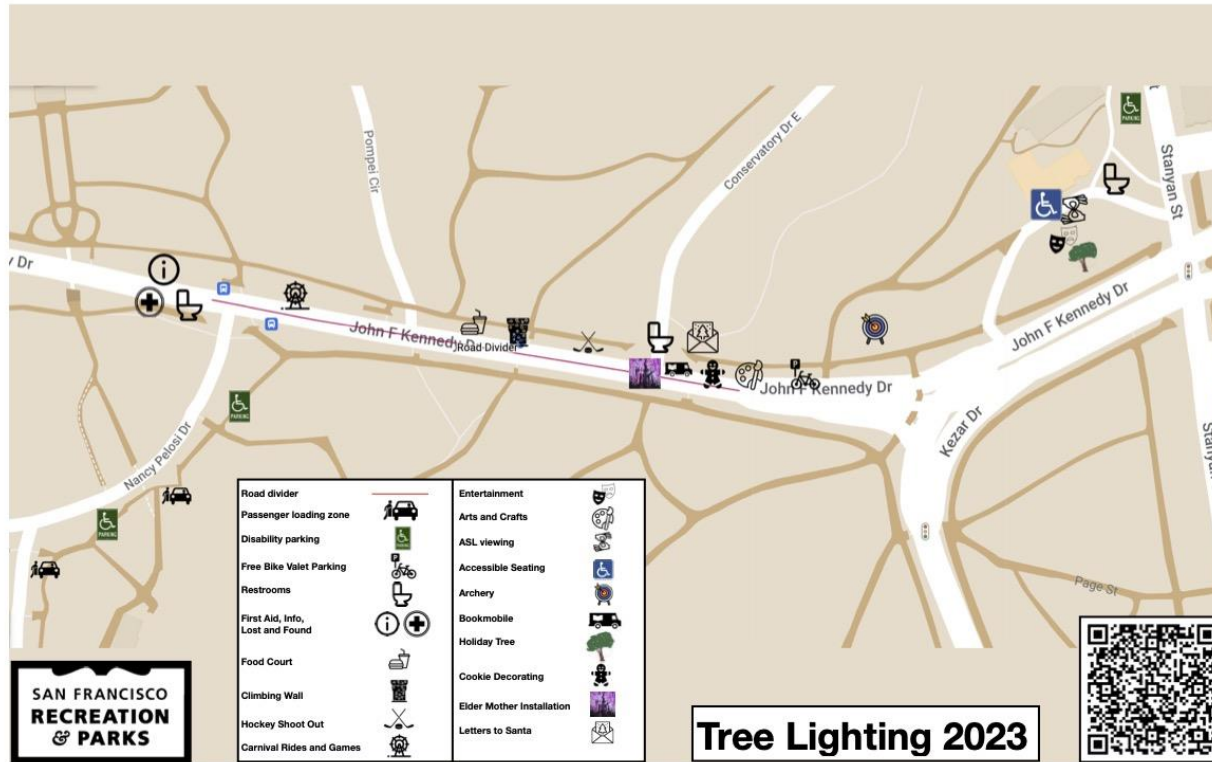


Event Access

- RPD sponsored events
 - Tree Lighting
 - Halloween
- Consultation with outside event organizers
 - Hardly Strictly Bluegrass
 - Entwined/Elder Mother
 - World Cup Soccer



Event Access Plans: Map Example



Where We are Now: Event Access



Where We are Now: Event Access

HARDLY *Strictly* BLUEGRASS 23

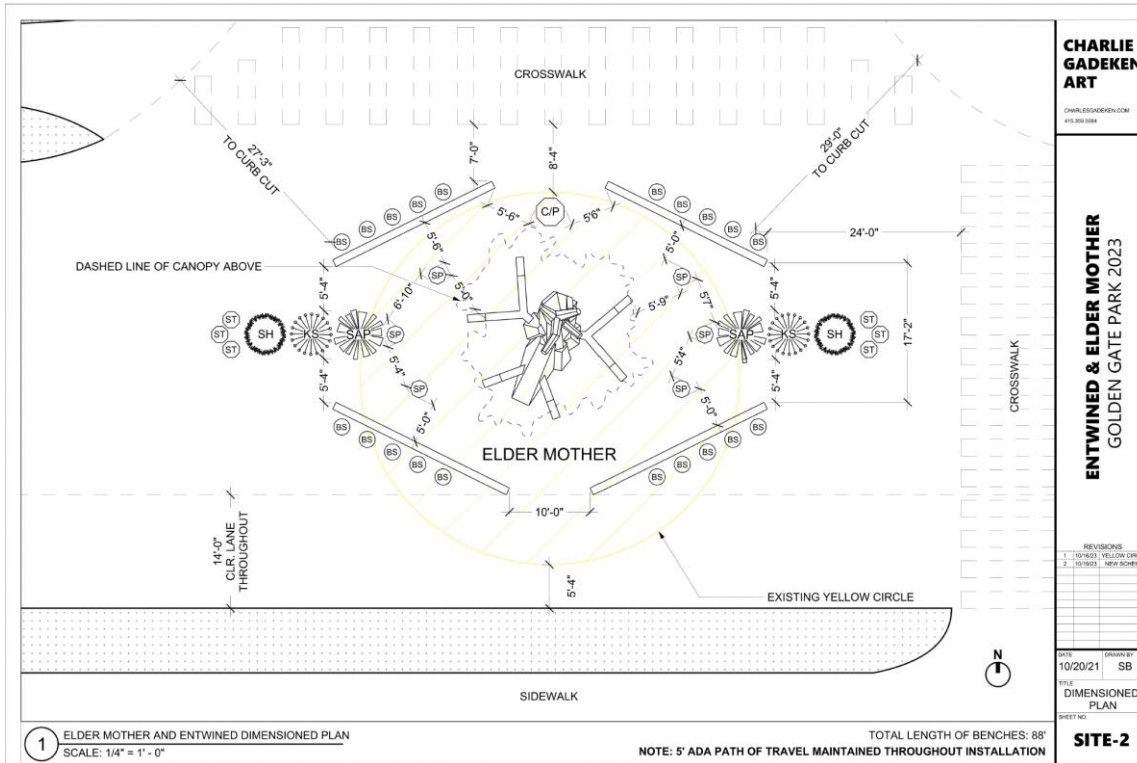
ACCESSIBILITY MAP



HARDLYSTRICTLYBLUEGRASS.COM



Event access plans: Elder Mother





[Services](#) [Departments](#)

Search

Step by step

Host an accessible event

A successful event plans for accessibility during planning, set-up, operation, and tear down of the event.



Disability Access Coordinator

John Romaidis



ADA Coordinators

John Romaidis,
Disability Access
Coordinator—
Physical Access

Lucas Tobin, ADA
Coordinator—
Programmatic Access



Barrier Removal Projects



Barrier Removal Projects: Botanical Garden Bookstore



Barrier Removal Projects: Stow Lake Pathway Improvements



Barrier Removal Projects: Japanese Tea Garden



Curb Ramps and Crosswalks



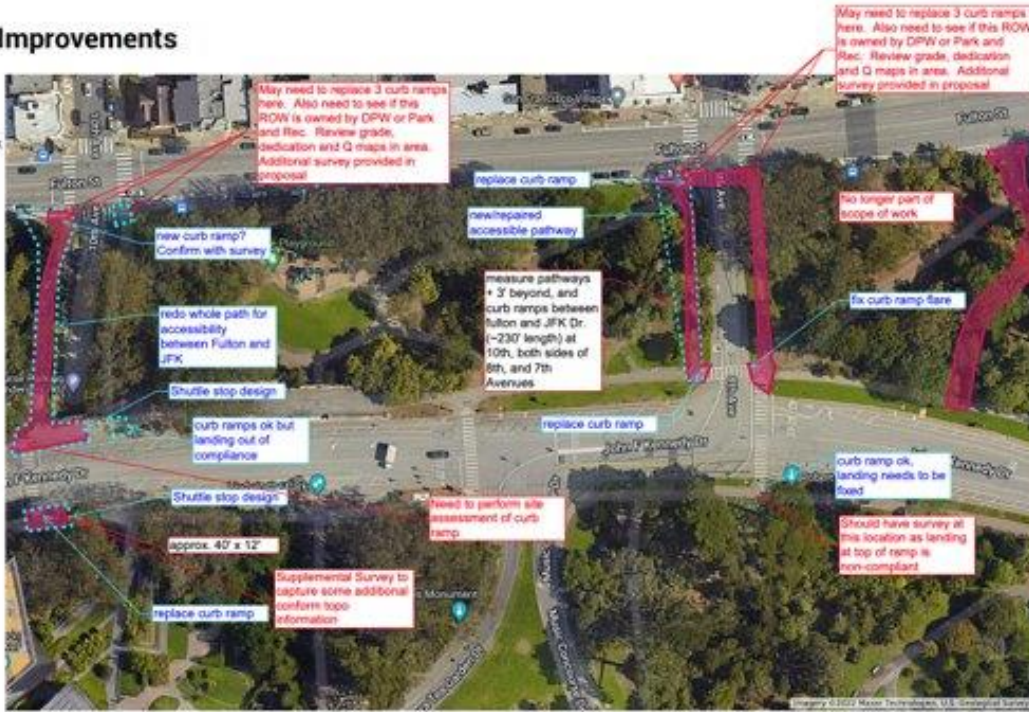
Barrier Removal Projects: Curb Ramps and Crosswalks

- Replace curb ramps along JFK Promenade (10)
 - From Stanyan to 10th Ave
 - Fulton to JFK Promenade
 - Stanyan frontage near McLaren Lodge
- Improve crosswalks (3)
 - Conservatory East
 - Pompeii Circle near Dahlia Dell
- Winter 2024



JFK - Mobility Improvements

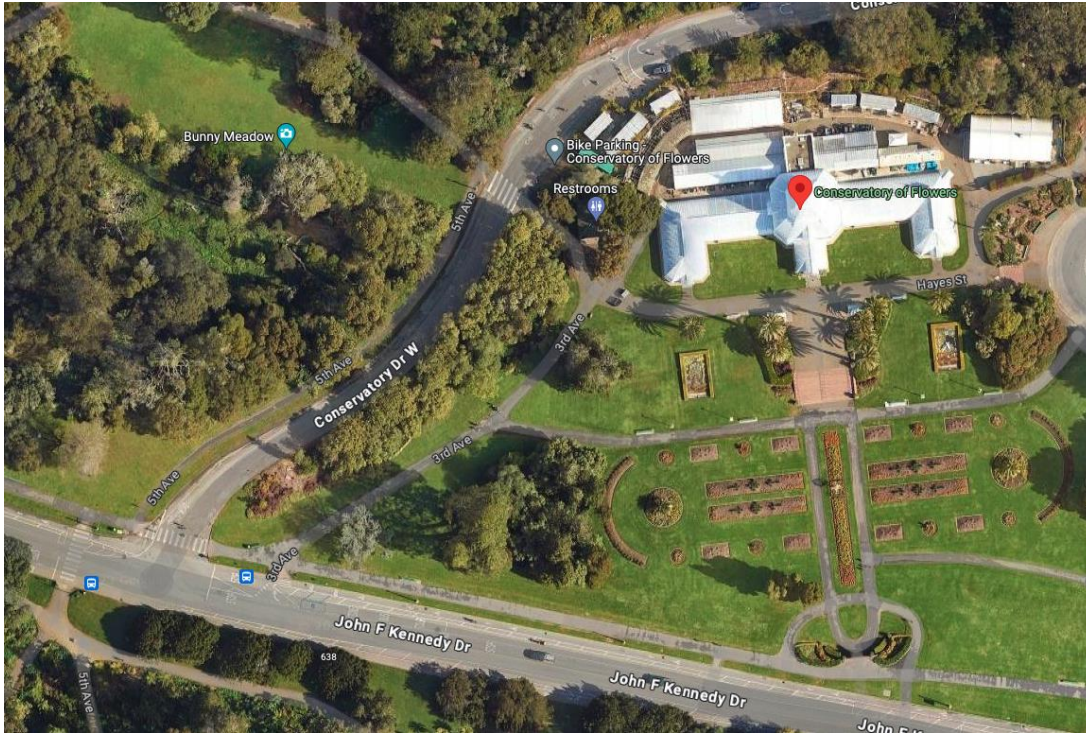
Survey needed
 All items
 Bike Racks, ADA, Shuttle Work
 etc.



Conservatory of Flowers



Conservatory of Flowers (Part 1)



Conservatory of Flowers (Part 2)

- Studying feasibility of a turnaround at the bottom of Conservatory Drive West
 - This is where the accessible path to the Conservatory is
 - This would allow passengers to be dropped off at the path



Pedestrian safety



Pedestrian Safety (Part 1)

- Still studying best options for ensuring safety for everyone on the Promenade
- Installations have had a calming effect
- Only 4 SFPD reported collisions on **all car free roads** in GGP during recording period (7/01/21-3/31/23)
 - includes portions of JFK, Martin Luther King, Jr. Blvd, Conservatory East Dr, and Middle Lake Drive)
 - Bike/vehicle collision at JFK/Kezar on 7/9/2021
 - Pedestrian/Taxi Vehicle collision at JFK/Transverse on 12/25/2021
 - Bike collision at JFK/Nancy Pelosi Dr on 7/17/2022
 - Bike/pedestrian collision near JFK/10th Ave on 10/01/2022



Pedestrian safety (Part 2)



