

The logo for the San Francisco Arts Commission, featuring the lowercase letters 'sfac' in a white, stylized, sans-serif font on a red square background.

san francisco
arts commission

San Francisco Arts Commission Visual Arts Committee Meeting

December 13, 2023

Item 1: Call to Order, Roll Call, Agenda Changes, Land Acknowledgement

- Call to order
- Roll call / Confirmation of quorum
- Agenda Changes
- Ramaytush Ohlone Land Acknowledgement

Land Acknowledgement

The San Francisco Arts Commission acknowledges that we are on the unceded ancestral homeland of the Ramaytush Ohlone who are the original inhabitants of the San Francisco Peninsula. As the indigenous stewards of this land and in accordance with their traditions, the Ramaytush Ohlone have never ceded, lost nor forgotten their responsibilities as the caretakers of this place, as well as for all peoples who reside in their traditional territory. As guests, we recognize that we benefit from living and working on their traditional homeland. We wish to pay our respects by acknowledging the ancestors, elders and relatives of the Ramaytush Community and by affirming their sovereign rights as First Peoples. As a department dedicated to promoting a diverse and equitable Arts and Culture environment in San Francisco, we are committed to supporting the traditional and contemporary evolution of the American Indian community.



Antone Family (Tohono O'odham), 2019, Photo by Hulleah Tsinhnahjinnie
Left to right: Christine [seated], Melanie, Michelle and Arianna

Item 2: General Public Comment

Discussion

(This item is to allow members of the public to comment generally on matters within the Committee's purview as well as to suggest new agenda items for the committee's consideration.)

Public Comment

Item 2: General Public Comment

Item 3: Consent Calendar

Action

Presentation Time: Approximately 3 minutes

Item 3: Consent Calendar

Action

1. Motion to retroactively approve and accept into the Civic Art Collection *Prisoners Repast*, 2018, by David Huffman. The two-dimensional artwork is comprised of Acrylic, oil, collage, spray paint, glitter and colored pencil on wood panel. It measures 60 in. x 60 in. and is installed at the San Francisco International Airport, Harvey Milk Terminal 1, Boarding Area B. The artwork was approved as purchased under Res. No. 1105-18-355.
2. Motion to retroactively approve and accept into the Civic Art Collection *Split*, 2018, by Yorgo Alexopoulos. The media artwork consists of a two-channel digital animation on 4K LCD displays with sound, aspect ratio 32:5 (6:40), synchronized media players, 11 minute, 30 second infinite loop, the screens measure 28 in. x 171 in. x 4 in. and is installed at the San Francisco International Airport, Harvey Milk Terminal 1, Boarding Area B. The artwork was approved as purchased under Res. No. 0709-18-219.
3. Motion to retroactively approve and accept into the Civic Art Collection *Painting #2018-8-6*, 2018, by Fong Chung-Ray. The two-dimensional artwork, mixed media on canvas, measures 60 in x 90 in. and is installed at the San Francisco International Airport, Harvey Milk Terminal 1, Boarding Area B. The artwork was approved as purchased under Res. No. 1105-18-355.

Item 3: Consent Calendar

Action

4. Motion to retroactively approve and accept into the Civic Art Collection *Parallel Portions*, 2017, by Mike Henderson. The two-dimensional artwork, oil on canvas, measures 72 in. x 87 in., and is installed at the San Francisco International Airport, Harvey Milk Terminal 1, Boarding Area B. The artwork was approved as purchased under Res. No. 0201-21-035.

5. Motion to approve the temporary installation of two sculptures by artist Stefanie Mufson in honor of Chinese New Year, Year of the Dragon. The sculptures will be made from wood painted in a blue and white ornamental pattern, measuring 5' high by 4.5" wide to be installed in Portsmouth Square and Union Square from January 28, 2024 until March 2, 2024. The works are sponsored by the Chinese Chamber of Commerce and will not become part of the Civic Art Collection.

Public Comment

Item 3: Consent Calendar

Item 3: Consent Calendar

Motion to approve the consent calendar items.

Item 4: 2530 18th Street

Action

Presenter: Molly Casey

Presentation Time: Approximately 5 minutes

Item 4: 2530 18th Street

Discussion and possible action

Discussion and Possible Action: to approve the design of the artwork *Horizon Effect* by Design Girl Magic to be installed at 2530 18th Street. The artwork is funded by MOHCD. Mercy Housing will be responsible for ongoing maintenance. The work will not become part of the Civic Art Collection.

Discussion and Possible Action: to approve the design of the artwork *An Embrace :: Un Abrazo* by Leah Tumerman to be installed at 2530 18th Street. The artwork is funded by MOHCD. Mercy Housing will be responsible for ongoing maintenance. The work will not become part of the Civic Art Collection.

Discussion and Possible Action: to approve the design of the artwork *Growing Together :: Creciendo Juntos* by Design Girl Magic to be installed at 2530 18th Street. The artwork is funded by MOHCD. Mercy Housing will be responsible for ongoing maintenance. The work will not become part of the Civic Art Collection.



NINE dot ARTS

Art Proposals

**Mercy Housing & The
Homeless Prenatal Program**

11.15.23

Mercy Housing + Homeless Prenatal Program

Project overview

The Homeless Prenatal Program (HPP) Community Campus expansion is primarily an 8-story mixed-use building and its connection points built adjacent to HPP's current building at the corner of 18th Street and Potrero Avenue. The campus expansion will include supportive housing, office space, and supportive services all in a single project at 2530 18th street. You can find more information about the project on the website: www.2530-18th.org

The project will enable the Homeless Prenatal Program to expand the critical services they provide to families in the city; creating a campus community of care that will support the health and growth of the countless families and children who make up the community they touch through their work.

Mercy Housing will support HPP in their campus expansion plan. More specifically, Mercy Housing will take the lead on the financing and development of the residential portion of the project, as well as coordinate with HPP and their consultants on the expanded office and services space.

NINE dot ARTS is the art curation and consulting firm overseeing the public artwork portion of the campus expansion.

LOCATION: 2530 18TH STREET, SAN FRANCISCO, CA



Site where new campus will be built

Existing HPP offices

ART GOALS



SELECTION CRITERIA

The artwork for the new Mercy Housing and Homeless Prenatal Program partnership will reflect the power of community and home. The artwork will work to empower the visitors, residents, and staff. It will bring hope, comfort, and connection to the internal and external community.

The artwork will integrate with and complement the thoughtful design. It will support the architectural story of embrace and comfort.

The artwork will be selected using an open call for entry RFQ to both local* bay area and national artists. Community based artwork will be encouraged. Once artists are selected, site specific designs will be provided to select from. The artists will refine their proposals based on feedback and then be presented to the City of San Francisco for final approval.

Beauty

Integrated

Welcoming

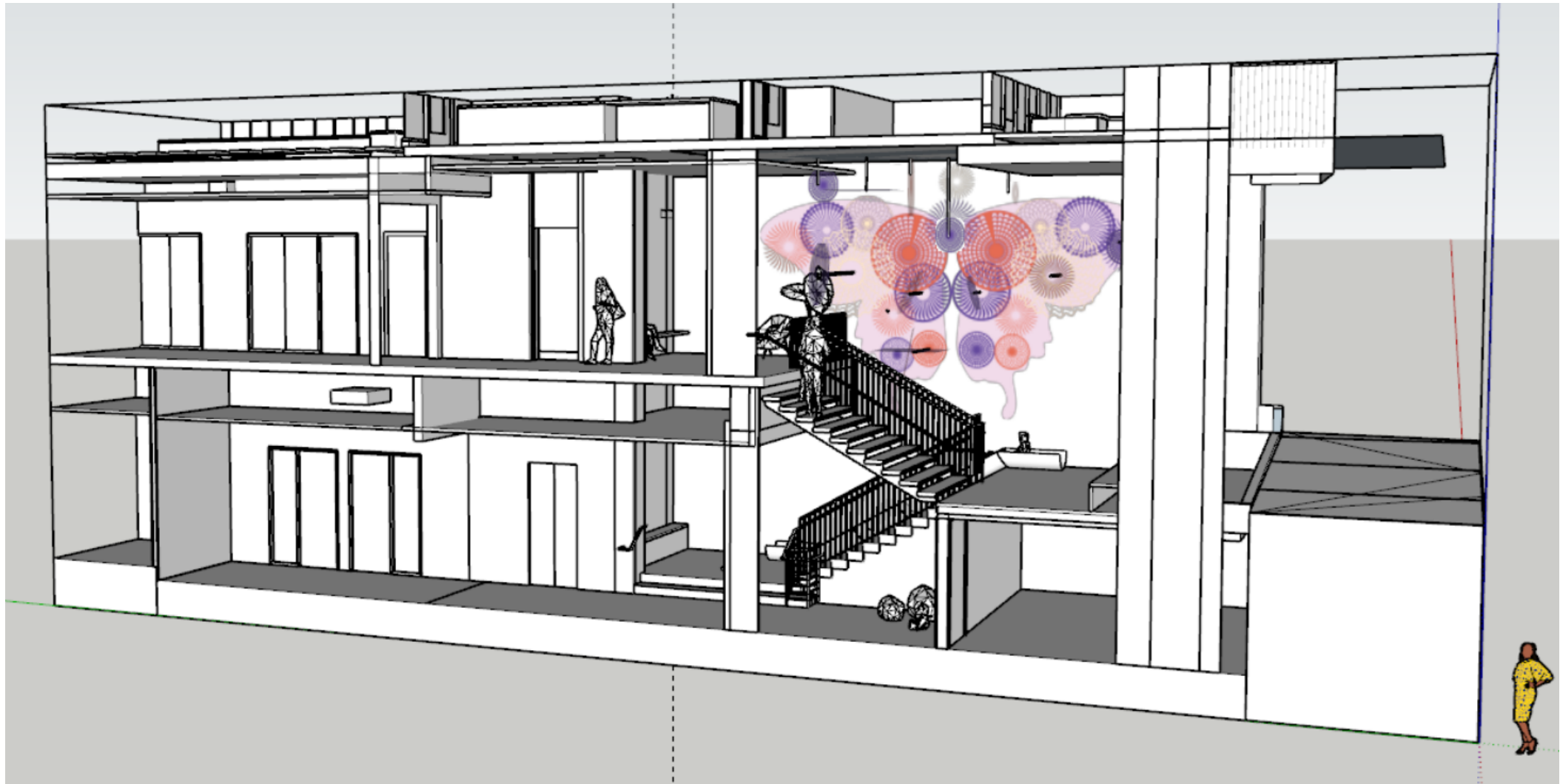
Uplifting

Inspired/inspiring

Sense of pride

Equity

Culturally appropriate for neighborhood

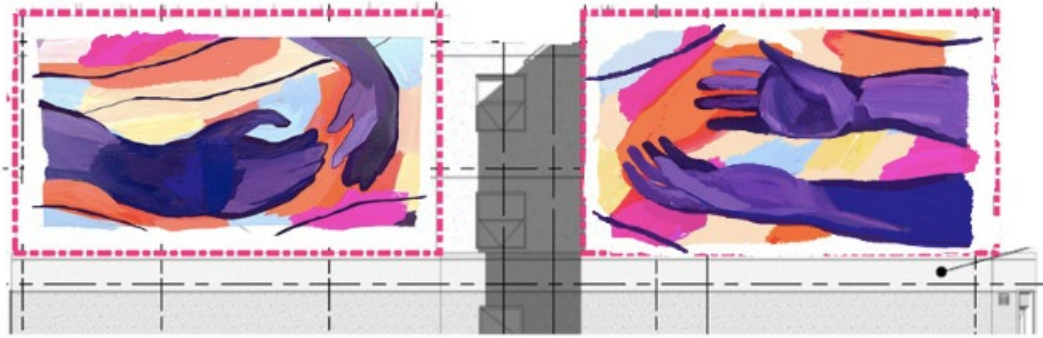




Location 2

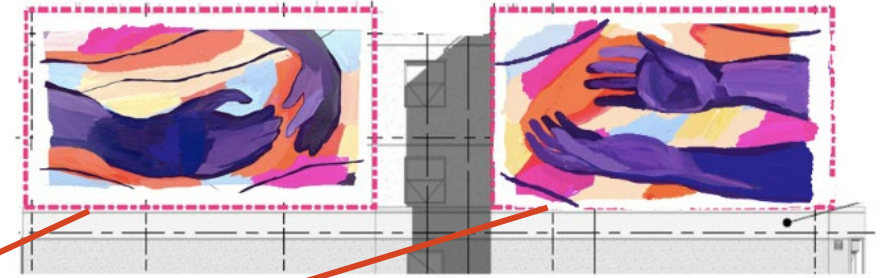
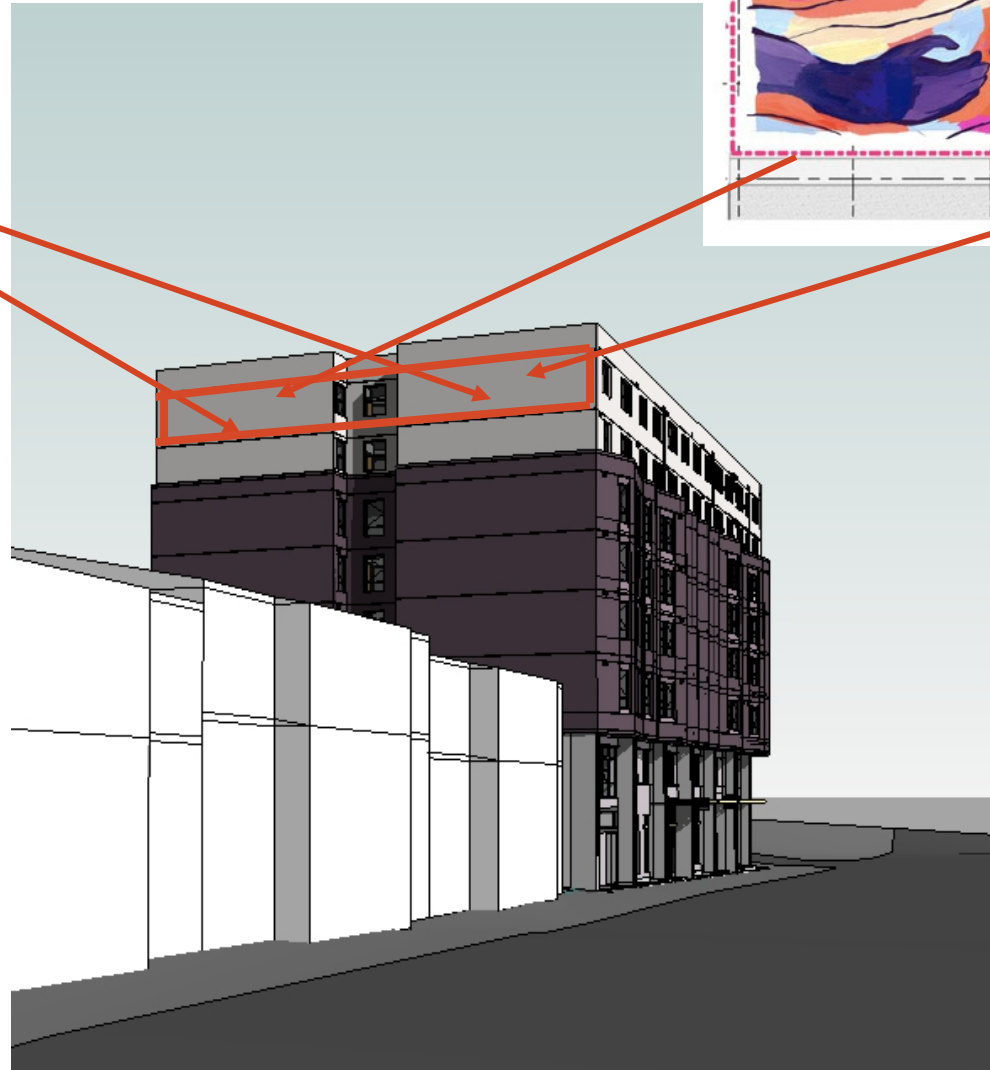


Leah Tumerman, Location 3





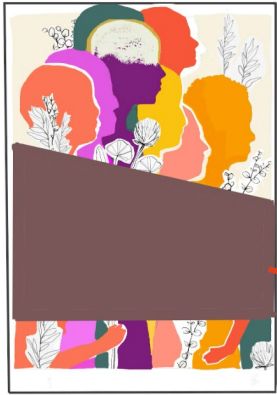
Location 3



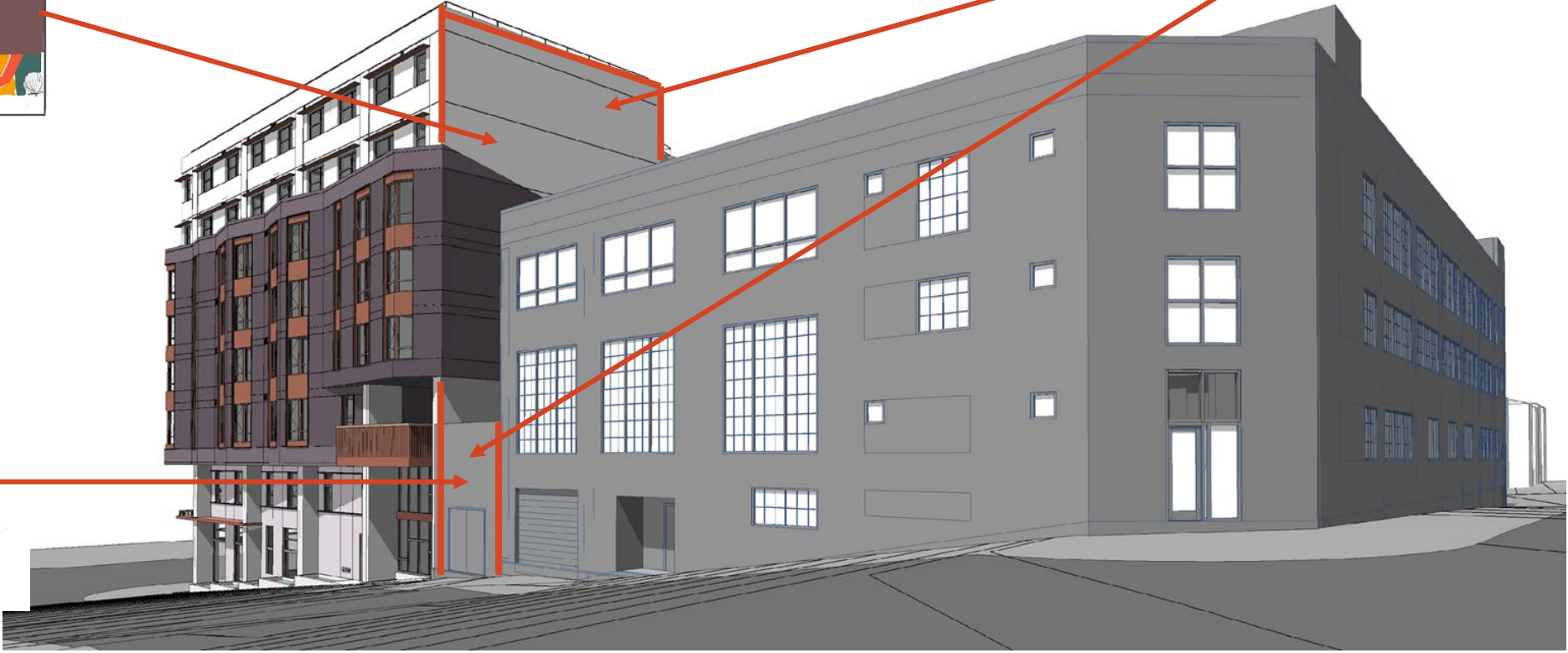
Leah Tumerman, Location 4



NOTE: This is a depiction and will change based on the community's contributions



Location 4



THANK YOU

NINE  ARTS

Public Comment

Item 4: 2530 18th Street

Item 4: 2530 18th Street

Action

Motion to approve the design of the artwork *Horizon Effect* by Design Girl Magic to be installed at 2530 18th Street. The artwork is funded by MOHCD. Mercy Housing will be responsible for ongoing maintenance. The work will not become part of the Civic Art Collection.

Motion to approve the design of the artwork *An Embrace :: Un Abrazo* by Leah Tumerman to be installed at 2530 18th Street. The artwork is funded by MOHCD. Mercy Housing will be responsible for ongoing maintenance. The work will not become part of the Civic Art Collection.

Motion to approve the design of the artwork *Growing Together :: Creciendo Juntos* by Design Girl Magic to be installed at 2530 18th Street. The artwork is funded by MOHCD. Mercy Housing will be responsible for ongoing maintenance. The work will not become part of the Civic Art Collection.

Item 5: SFAC Galleries 2024 Main Gallery Exhibition

Action

Presenter: Carolina Aranibar-Fernandez
Presentation Time: Approximately 5 minutes

Discussion and Possible Action: for the Director of Cultural Affairs to approve the artist honorarium in the amount of \$2500 to Kimberly Acebo Arteche; \$2500 to Miguel Arzabe; \$4000 to Daniela Rivera; \$2500 to Trina Michelle Robinson; for the research and development of artwork for a SFAC Galleries exhibition in the Main Gallery on view May 16 – August 4, 2024.

SFAC Galleries
Spring 2024 Exhibition

SFAC Main Gallery
May 16 – August 17, 2024
Curated by Carolina Aranibar-Fernandez



Kimberly Acebo Arteche



Miguel Arzabe



Daniela Rivera



Trina Michelle Robinson



Public Comment

Item 5: SFAC Galleries 2024 Main Gallery Exhibition

Item 5: SFAC Galleries 2024 Main Gallery Exhibition

Action

Motion for the Director of Cultural Affairs to approve the artist honorarium in the amount of \$2500 to Kimberly Acebo Arteché; \$2500 to Miguel Arzabe; \$4000 to Daniela Rivera; \$2500 to Trina Michelle Robinson; for the research and development of artwork for a SFAC Galleries exhibition in the Main Gallery on view May 16 – August 4, 2024.

Item 6: Temporary Sculpture Installation on Embarcadero

Action

Presenter: Jill Manton

Presentation Time: Approximately 5 minutes

Discussion and Possible Action: to approve the temporary installation of a bronze figurative sculpture by artist Thomas J Price, titled *As Sounds Turn to Noise* which measures 9 ft. 2.5 in. x 4 ft. x 3 ft. 9 in. which will be loaned to the Arts Commission by Hauser & Wirth Gallery, to be installed at a prominent site on The Embarcadero determined in consultation with the Port, and pending Port approval, for a period of six months commencing late February/early March 2024 at a total cost not to exceed \$40,000 from the Public Art Trust.

Explanatory Document for Temporary Installation of Sculpture by Thomas J Price on Embarcadero Funded by Public Art Trust

Motion to approve the temporary installation of a bronze figurative sculpture by artist Thomas J Price, entitled *As Sounds Turn to Noise* which measures 9'2.5" x 4' x 3'9" which will be loaned to the Arts Commission by the Hauser and Wirth Gallery, to be installed at a prominent site on the Embarcadero determined in consultation with the Port, and pending Port approval and final negotiation of the loan agreement, for a period of six months commencing late February/early March 2024 at a cost not to exceed \$40,000 from the Public Art Trust with a possible contribution of \$20,000 from the Port, thereby reducing the amount of Public Art Trust funds to be used.

This proposal will utilize a portion of the balance of the \$300,000 in funds authorized by Arts Commission as part of RESOLUTION NO. 0402-18-121. The applicable provision of the resolution reads:

\$300,000 to be used for temporary public art projects in the Civic Center Commons and other sites as recommended by staff and approved by the Commission.

Objectives:

- Fulfill the Mayor's mandate to enliven the downtown with a variety of artwork. In Mayor Breed's 2023 State of the City speech, she stated her objective to **"Transform Downtown into a leading arts, culture, and nightlife destination. *By leveraging San Francisco's world-renowned culinary, cultural, and entertainment offerings, and adding new arts, leisure, and recreational experiences Downtown, the city can enhance its brand as the center of one of the most unique and culturally vibrant cities in the world.*"**
- Enliven the City by increasing foot traffic to these sites. Demonstrate that San Francisco is a city with an exuberance of cultural vitality.
- Create new destinations for both residents of, and visitors to the City.

Funding:

- Estimated cost for round trip transportation, installation/deinstallation, engineering, insurance and signage is approximately \$40,000.
- Potential \$20,000 sponsorship/cost share with Port of San Francisco (to be confirmed)
-

Proposal:

We propose to install the *As Sounds Turn to Noise* bronze sculpture by Thomas J Price, which measures 9'2.5" x 4' x 3'9" which will be loaned to the Arts Commission by the Hauser and Wirth Gallery for a period of six months commencing in late February/March 2024, pending Port approval and final negotiation of the loan agreement. Thomas J Price is an artist from the UK. His larger-than-life sculptures of Black people are monuments that celebrate the everyday person which challenge norms about who gets to be memorialized in bronze. His work has been exhibited widely in Europe including a sculpture that is displayed in front of the National Portrait Gallery in London. The Museum of Harlem in NY also exhibited one of his sculptures in the Marcus Garvey Park in Manhattan. Please see photo of sculpture below.

Process:

The City Attorney has advised that the loan of artwork is not subject to the same procurement methods as the purchase or acquisition of artwork,



Public Comment

Item 6: Temporary Sculpture Installation on
Embarcadero

Item 6: Temporary Sculpture Installation on Embarcadero

Action

Motion to approve the temporary installation of a bronze figurative sculpture by artist Thomas J Price, titled *As Sounds Turn to Noise* which measures 9 ft. 2.5 in. x 4 ft. x 3 ft. 9 in. which will be loaned to the Arts Commission by Hauser & Wirth Gallery, to be installed at a prominent site on The Embarcadero determined in consultation with the Port, and pending Port approval, for a period of six months commencing late February/early March 2024 at a total cost not to exceed \$40,000 from the Public Art Trust.

Item 7: Westside Pump Station Reliability Improvement Project

Action

Presenter: Arianne Gelardin

Presentation Time: Approximately 7 minutes

Discussion and Possible Action: to approve the final design of *Fog Lilies*, a painted mural by artist Jetro Martinez for the West Side Pump Station Reliability Improvement Project, located at Great Highway and Sloat Blvd.

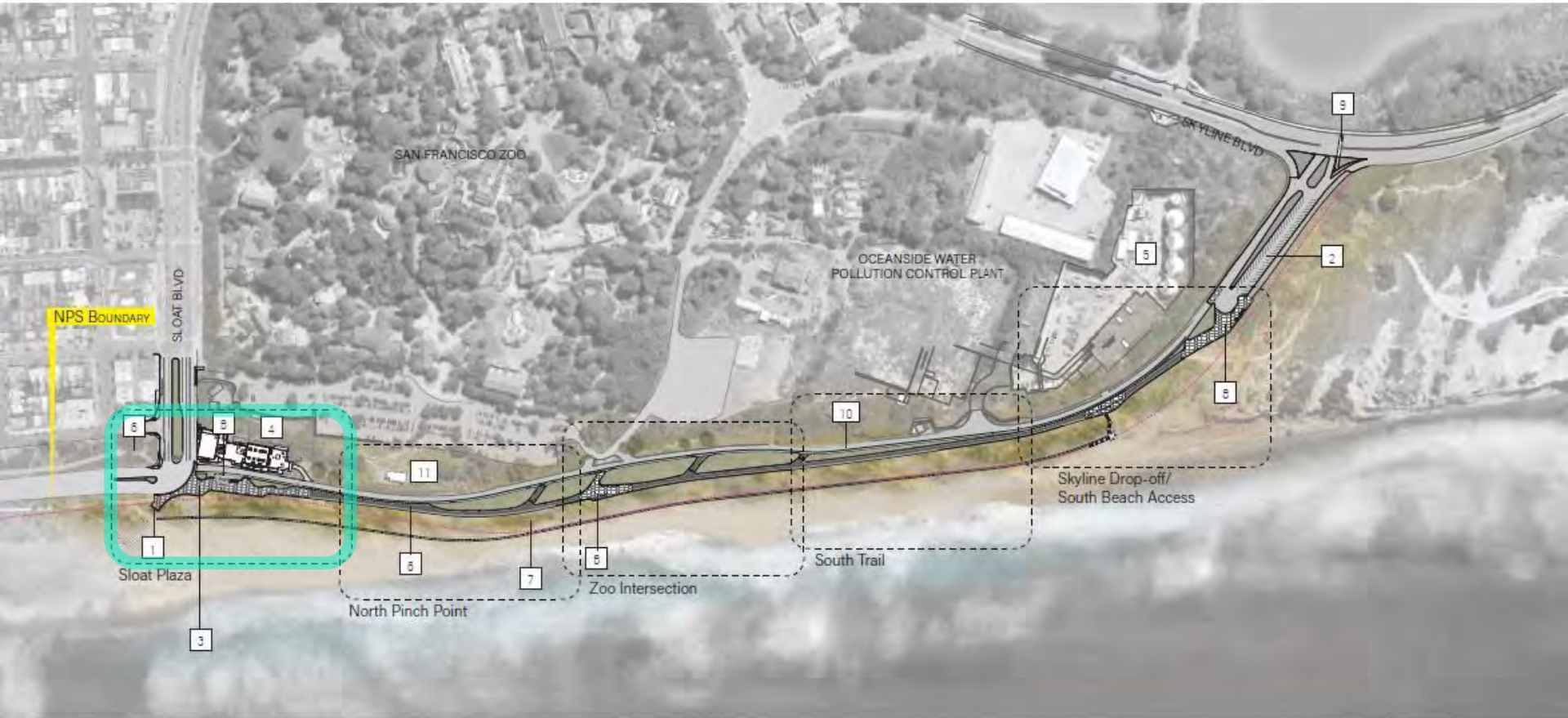


WESTSIDE PUMP STATION RELIABILITY IMPROVEMENT PROJECT
PUBLIC ART PROJECT

Design Development and Construction Documentation

VAC – DECEMBER 13, 2023

WESTSIDE PUMP STATION RELIABILITY IMPROVEMENT PROJECT



KEY

- 1 SAND RAMP MAINTENANCE VEHICLE ACCESS
- 2 SKYLINE PARKING LOT
- 3 SLOAT PLAZA
- 4 WESTSIDE PUMP STATION

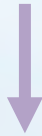
- 5 OCEANSIDE WATER POLLUTION CONTROL PLANT
- 6 LOWER GREAT HIGHWAY SHARED USE TRAIL
- 7 STABILIZATION | NATIVE REVEGETATION
- 8 SKYLINE DROP OFF AREA

- 9 CROSSWALK TO LAKE MERCED
- 10 SERVICE ROAD (ONE-WAY)
- 11 COASTAL CONSERVATION CENTER

SCALE
1"=300'



WESTSIDE PUMP STATION RELIABILITY IMPROVEMENT PROJECT



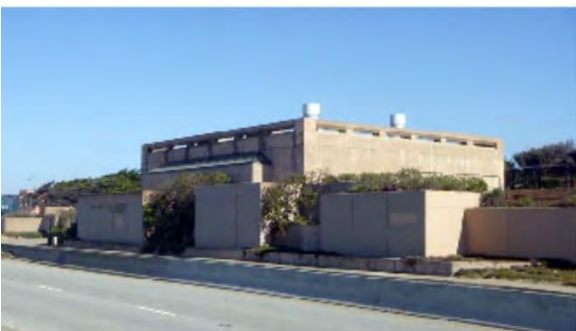
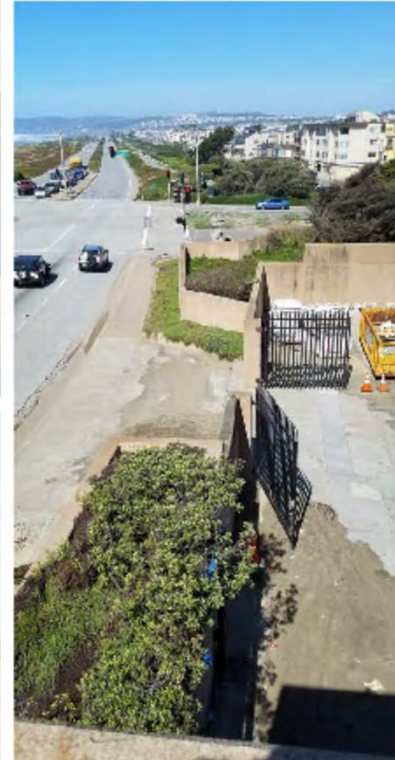
WESTSIDE PUMP STATION RELIABILITY IMPROVEMENT PROJECT



WESTSIDE PUMP STATION RELIABILITY IMPROVEMENT PROJECT



WESTSIDE PUMP STATION RELIABILITY IMPROVEMENT PROJECT



PUBLIC ART PROJECT GOALS

- Create an artwork that will beautify and complement the architecture of the building.
- Enhance the building's connection to the site by reflecting SFPUC's mission of providing high quality, efficient and reliable water, wastewater and power services to the City in a manner inclusive of environmental and community interests.
- Have visibility and presence from a distance.

ARTIST'S CONCEPTUAL PROPOSAL - JUNE 5, 2017



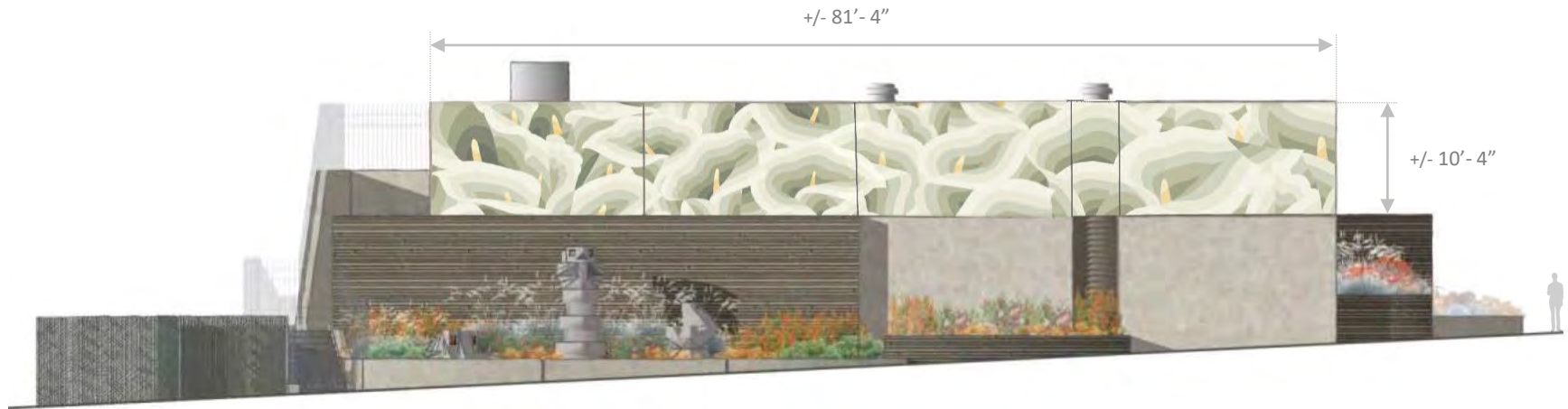
ART LOCATION – ARTIST'S CONCEPTUAL PROPOSAL



ART LOCATION – FINAL DESIGN



FINAL DESIGN – DECEMBER 13, 2023



Sloat Blvd. View - North Facing



FINAL DESIGN – DECEMBER 13, 2023



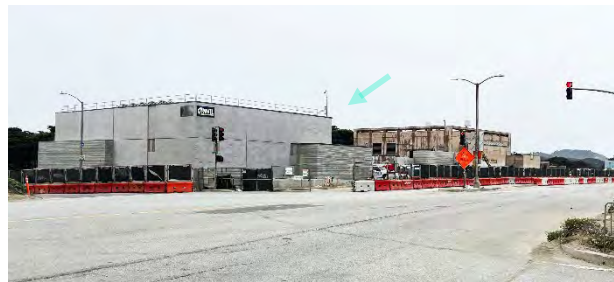
Great Highway View - West Facing



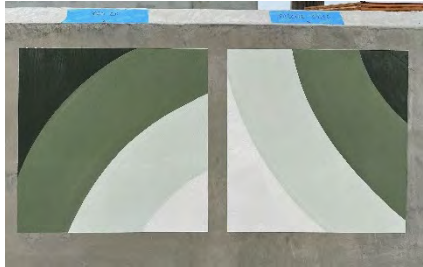
FINAL DESIGN – DECEMBER 13, 2023



South Facing



PAINT TEST + FINAL COLOR PALETTE



OCT 2022



JUN 2023



Sloat Avenue View - North Facing



Great Highway View - West Facing



South Facing



9382

9385

9395

9398

PROJECT TIMELINE

Design Development and
Construction Documentation Approval

December 2023

Mural Installation

April 2024

Public Comment

Item 7: Westside Pump Station Reliability Improvement Project

Item 7: Westside Pump Station Reliability Improvement Project

Action

Motion to approve the final design of *Fog Lilies*, a painted mural by artist Jetro Martinez for the West Side Pump Station Reliability Improvement Project, located at Great Highway and Sloat Blvd.

Item 8: Southeast Treatment Plant Construction Fence

Action

Presenter: Jackie von Treskow

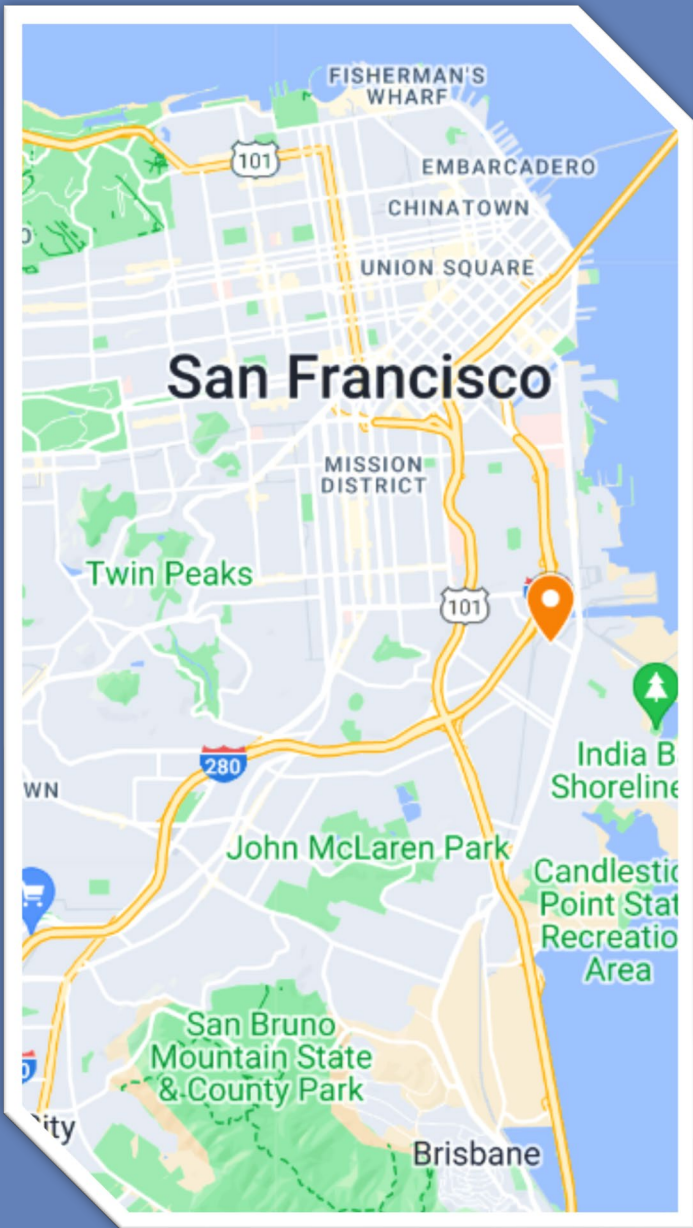
Presentation Time: Approximately 5 minutes

Discussion and Possible Action: to approve *Modalities & Motifs, 2023*, a temporary artwork by Afatasi The Artist (Fatasilima LLC), as installed on the Southeast Treatment Plant Construction Fence along Evans Avenue between Rankin and Phelps streets.



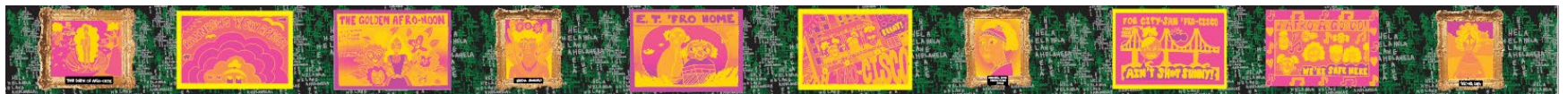
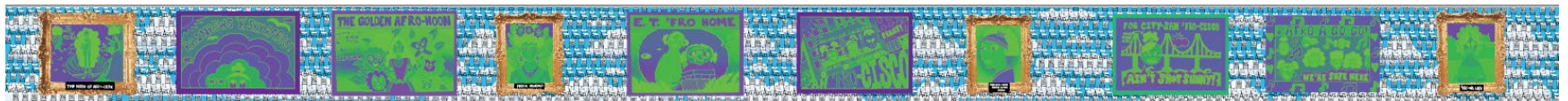
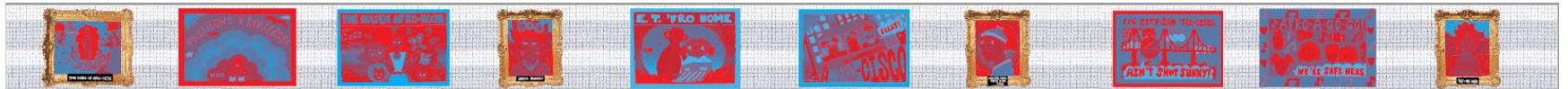
**SOUTHEAST TREATMENT PLANT
CONSTRUCTION FENCE
TEMPORARY ARTWORK PROGRAM**

FALL 2023 – FALL 2024



AFATASI THE ARTIST *MODALITIES & MOTIFS*

VAC FINAL DESIGN APPROVAL | OCTOBER 18, 2023



AFATASI THE ARTIST *MODALITIES & MOTIFS*

AS-INSTALLED







THE BIRTH OF AFRO-DITE

THE BIRTH OF AFRO-DITE

YOU OF AZEEL!

THE BIRTH OF AFRO-DITE

RAINBOWS 'R' SKY AFROS!

WOW

THE GOLDEN AFRO-NOON

... You can learn a lot of things from AFROS...

... ESPECIALLY during JUNETEENTH!





FREDA KAHN-FRO



FREDA KAHN-FRO
PEARL IN HER
CURLS



PHOTO: ETHAN KAPLAN PHOTOGRAPHY









Public Comment

Item 8: Southeast Treatment Plant Construction Fence

Item 8: Southeast Treatment Plant Construction Fence

Action

Motion to approve *Modalities & Motifs, 2023*, a temporary artwork by Afatasi The Artist (Fatasilima LLC), as installed on the Southeast Treatment Plant Construction Fence along Evans Avenue between Rankin and Phelps streets.

Item 9: Pier 27 Cruise Terminal

Action

Presenter: Marcus Davies

Presentation Time: Approximately 5 minutes

Discussion and Possible Action: to approve artist Ana Teresa Fernández and proposal for the Pier 27 Cruise Terminal Public Art Project, as recommended by the artist review panel.

Discussion and Possible Action: to authorize the Director of Cultural Affairs to enter into a contract with Ana Teresa Fernández for an amount not to exceed \$136,000 for the design, engineering, fabrication, transportation and installation consultation of an artwork for the Pier 27 Cruise Terminal Public Art Project.



**PIER 27 CRUISE TERMINAL
ARTIST REVIEW PANEL TWO SUMMARY**

MEETING DATE

December 8, 2023

VOTING SELECTION PANELISTS

Trisha Lagaso Goldberg, Independent Curator
Dan Hodapp, Senior Waterfront Planner, Port of San Francisco
Walter Kitundu, Artist
Vivian Perez, Community Representative
Peter Pfau, Design Director, Perkins+Will
Abby Sadin Schnair, Arts Commissioner, SFAC
Weston Teruya, Artist
Ashley Tomerlin, BCDC

PROCESS

Three artist finalists presented their proposals for the Pier 27 Cruise Terminal Public Art Project. The Artist Review Panel discussed the finalists' proposals and scored each artist on the following criteria (1= low score):

Artistic Merit (1-7)
Relevant Skills and Experience (1-3)
Meets Project Goals (1-6)
Feasibility and Maintainability (1- 4)

RESULTS

Ana Teresa Fernández	118
James Shen	101
David Brooks	100

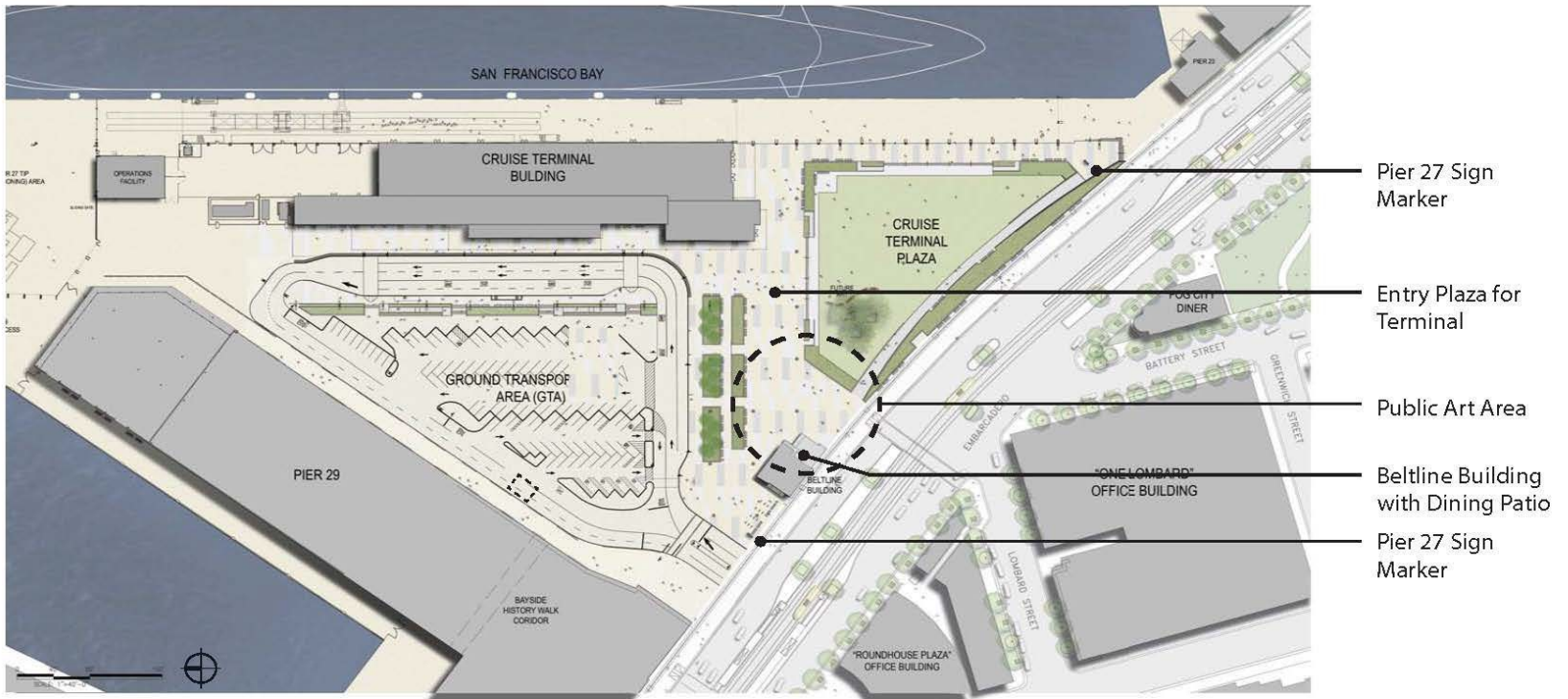
ARTS COMMISSION APPROVAL

Discussion and Possible action: to approve artist Ana Teresa Fernández and proposal for the Pier 27 Cruise Terminal Public Art Project, as recommended by the artist review panel.

Discussion and Possible action: to authorize the Director of Cultural Affairs to enter into a contract with Ana Teresa Fernández for an amount not to exceed \$136,000 for the design, engineering, fabrication, transportation and installation consultation of an artwork for the Pier 27 Cruise Terminal Public Art Project Public Art Project.







Cruise Terminal Public Art Area

Art Opportunity Project Goals

- Artwork should be positioned to invite visitors, but not impede paths of circulation.
- Artwork should be visible from points north and south on the Embarcadero.
- Artwork should embrace and highlight its visual connection to the Bay, and consider geographic, cultural and/or historic relationships to the site and surrounding areas.
- Artwork should be universally accessible and accommodating, and appropriately scaled to the site.
- Artwork should be fabricated with consideration of sustainable materials and constructed as permanent and maintainable within an urban and marine environment.

Pier 27 Cruise Terminal
Public Art Project

Ana Teresa Fernández
“Mareas”



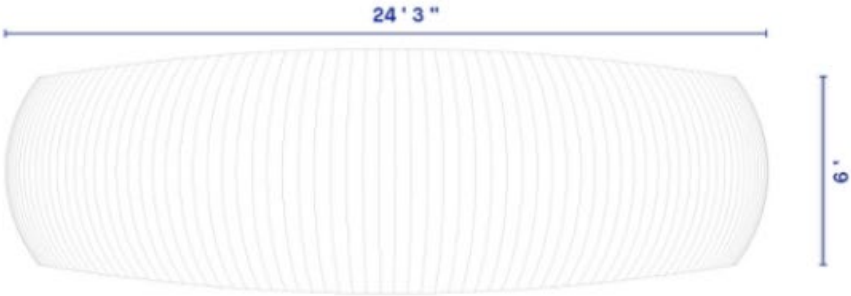


Canopy casts color on sidewalk

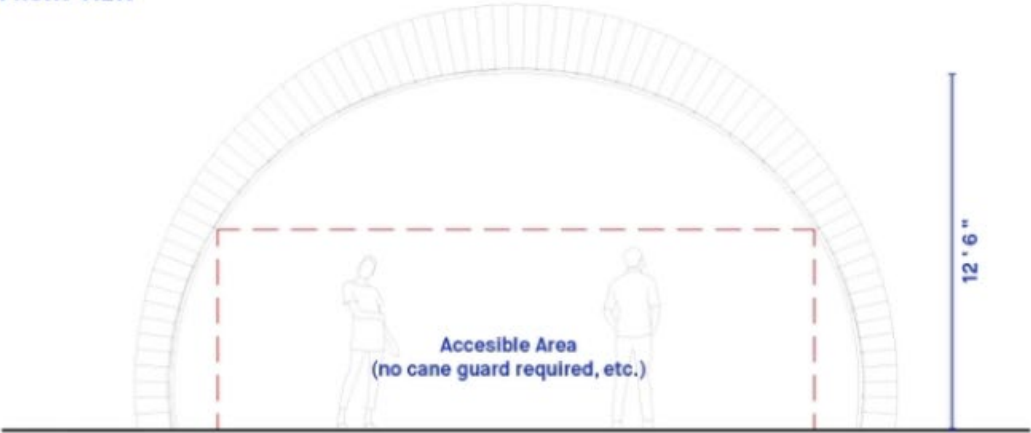
ARCHITECTURAL VIEWS

“Mareas”

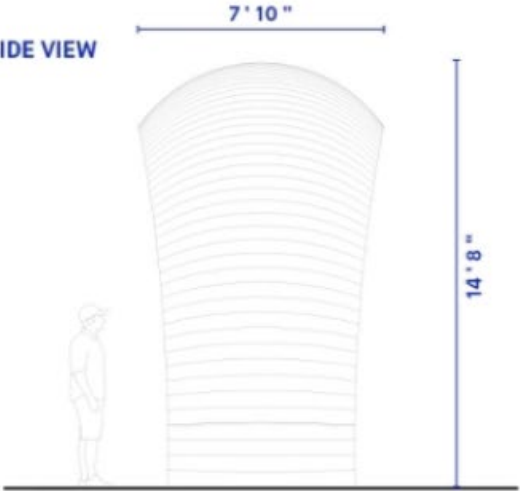
PLAN VIEW



FRONT VIEW



SIDE VIEW

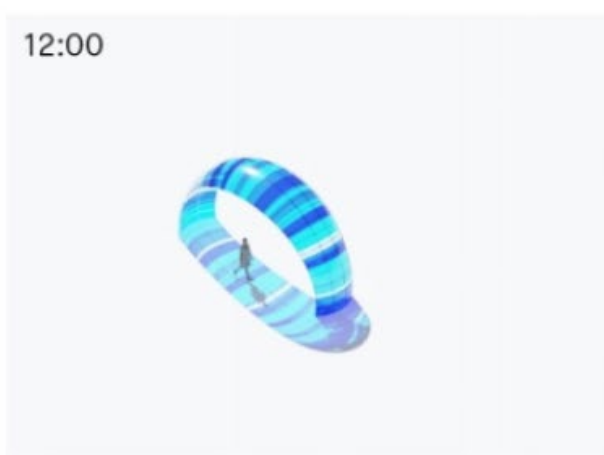


“Mareas”

Summer Solstice



Winter Solstice



Public Comment

Item 9: Pier 27 Cruise Terminal

Item 9: Pier 27 Cruise Terminal

Action

Motion to approve artist Ana Teresa Fernández and proposal for the Pier 27 Cruise Terminal Public Art Project, as recommended by the artist review panel.

Motion to authorize the Director of Cultural Affairs to enter into a contract with Ana Teresa Fernández for an amount not to exceed \$136,000 for the design, engineering, fabrication, transportation and installation consultation of an artwork for the Pier 27 Cruise Terminal Public Art Project.

Item 10: Herz Recreation Center

Action

Presenter: Marcus Davies
Presentation Time: Approximately 5 minutes

Discussion and Possible Action: to approve Construction Document and Final Design deliverables by Sanjay Vora for the Herz Recreation Center Public Art Project.

Search Google Maps

Restaurants Hotels Things to do Museums Transit Pharmacies ATMs

Neighborhoods: SUNNYSIDE, MISSION TERRACE, UNIVERSITY MOUND, PORTOLA, HUNTERS POINT, BALBOA PARK, EXCELSIOR, McLaren Park, VISITACION VALLEY, SUNNYDALE, BAYSHORE HEIGHTS, LITTLE HOLLYWOOD, CANDLESTICK POINT SRA, CANDLESTICK POINT STATE RECREATION AREA.

Landmarks: McLaren Park, John McLaren Park, Golden Bridges School, Balboa High School, Balboa Park, Saddle Loop Trail, Point Regulus, Bay View Park, Gilman Playground, Tubsinte Hill, Tubsinte Village & Shell Mound, Candlestick Cove Signature Homes, Pelican Group Picnic Area.

Businesses: East Star Building Supply, McDonald's, Laughing Monk Brewing, One Hat One Hand, Smart Demolition & Excavation, Auto Towing, Hunter's Point Naval Shipyard, Iron Mountain, Philosopher's Way Trailhead, Crocker Amazon Soccer Fields, Hummingbird Farm, Cow Palace Arena & Event Center, 7 Mile House, Abbey Party Rents SF, Bayshore Elementary School, McDonald's Name a better trio, we'll wait.

Streets: Monterey Blvd, Silver Ave, University St, Portola St, Bayview St, Revere Ave, Ocean Ave, Mission St, Italy Ave, Persia Ave, Mansell St, Visitacion Ave, Sunnydale Ave, Velasco Ave, S Hill Blvd, Arcendale Dr, Alta Vista Way, North Bench.

Water Bodies: San Bruno Ave, South Basin, Double Rock.

Map controls: Layers, Street View, Navigation (compass, zoom in, zoom out, full screen), Scale bar (1000 ft).

Map data ©2023 Google United States Terms Privacy Send Product Feedback



SUNNYDALE AVE

HAHN STREET



SANJAY VORA

SPRING 2022

REFLECTION & PROJECTION

Art Proposal for the Herz Recreation Center Public Art Project



STATEMENT OF INTENT

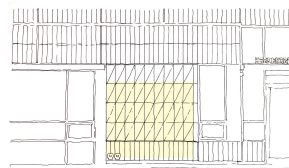
Throughout time, joy and play amongst family and community have been universal to the human experience. The Herz Recreation Center and adjoining plaza is designed for this very purpose—for gathering, for playing, and for experiencing joy amongst the Visitation Valley neighborhood and greater community. I think of my piece as being born from a reflection of what was, is, and will be in the spaces of the Herz Recreation Center Plaza and surrounding neighborhoods. Comprised of 36 colorful and uniquely painted ceramic tiles, and 36 mirror-polished stainless steel tiles, this experiential and interactive wall piece will celebrate and reflect the multiracial, multicultural and intergenerational joy and play of this vibrant neighborhood. Through a composite visual depiction interspersed amongst actual reflections, visitors will experience the painted visuals of people playing and smiling spread across the ceramic triangles while they will simultaneously “see themselves”, the plaza, and the park reflected in the juxtaposing mirror triangles. The concept imagery currently depicted in the renderings are an example of what the various people in the scene could be doing and how they may appear.

KEY POINTS

- Extremely durable materials
- Very low maintenance
- Graffiti and all-weather resistant materials
- Visual integration with existing architecture
- Vibrant colors and playful geometric design
- Interactive mirror play
- Visuals of different people promote inclusivity and play
- Concept reflects joy amongst a diverse community
- Design, fabrication and installation under one entity

ARCHITECTURAL INTEGRATION

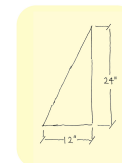
Significant to the creation of the triangle design is the existing dimensions of the rectangular tile cladding surrounding the piece measuring 6” wide by 24” high. Derived from these dimensions, the two juxtaposed triangles of ceramic and metal in the art piece make up a 12” wide by 24” high rectangle. With this dimensional alignment, the piece exudes a visually harmonic integration with the overall building.



Proposed art elevation integrated with building cladding



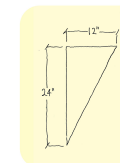
Art in context of exterior south elevation



Ceramic Tile

Naturally heat, flame, water, scratch, stain, fade, and graffiti resistant

Extremely durable, used in many exterior architectural and public art applications globally

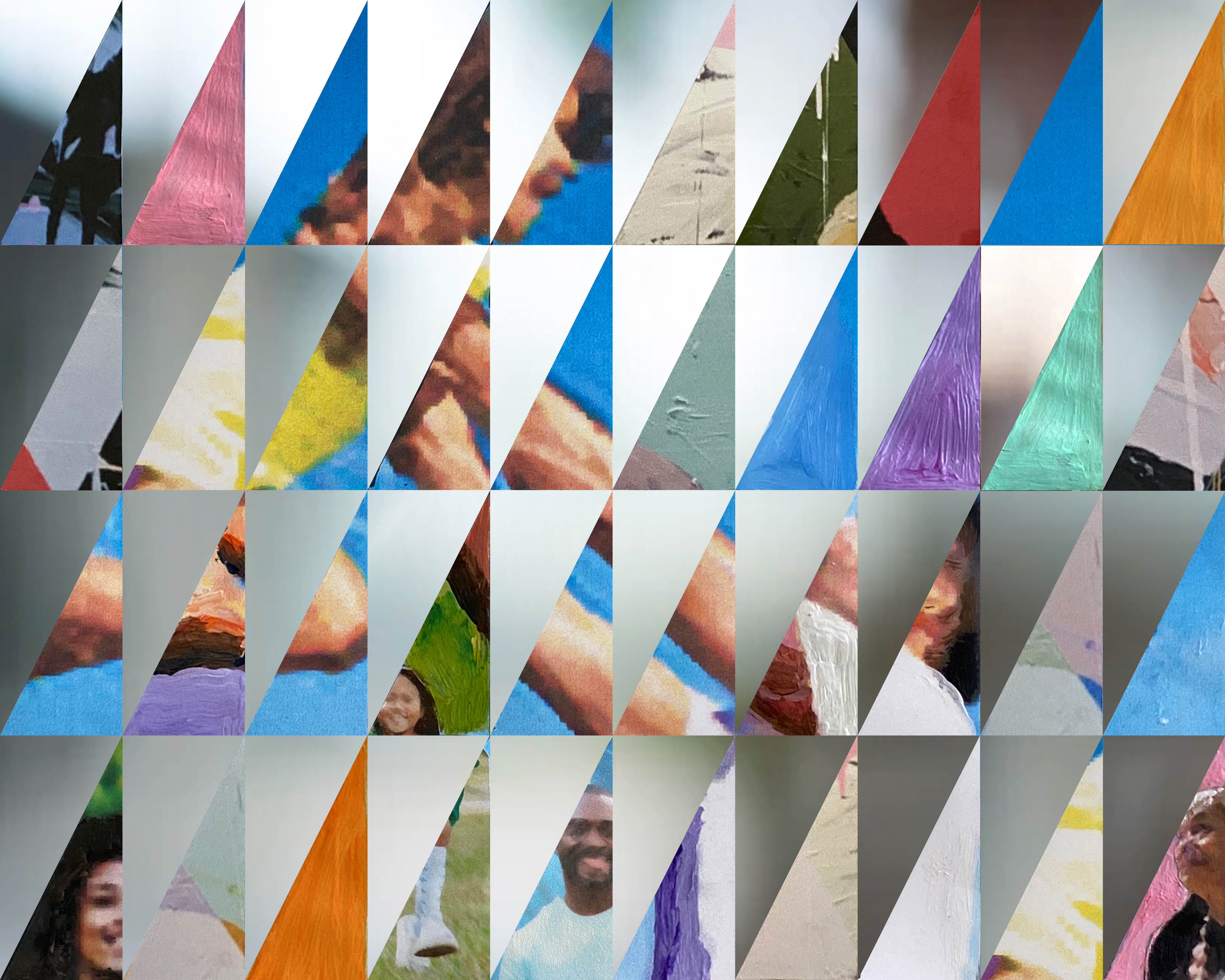


Stainless Steel Tile

Non-directional, marine grade mirror-polished stainless steel

Extreme durability and all-weather resistant, can be re-buffed easily for polishing

Used in many exterior architectural and public art applications globally



GENERAL STRUCTURAL NOTES

01100 GENERAL REQUIREMENTS

1. MATERIALS AND WORKMANSHIP TO CONFORM WITH THE 2022 EDITION OF THE CALIFORNIA BUILDING CODE.
2. DRAWINGS INDICATE GENERAL AND TYPICAL DETAILS OF CONSTRUCTION. WHERE CONDITIONS ARE NOT SPECIFICALLY INDICATED BUT ARE OF SIMILAR CHARACTER TO DETAILS SHOWN, USE SIMILAR DETAILS OF CONSTRUCTION, SUBJECT TO REVIEW BY THE OWNER'S REPRESENTATIVE.
3. DETAILS ON SHEETS TITLED "TYPICAL" OR DETAILS TITLED "TYPICAL" APPLY TO SITUATIONS OCCURRING ON THE PROJECT THAT ARE THE SAME OR SIMILAR TO THOSE SPECIFICALLY REFERENCED. SUCH DETAILS ARE NOT NOTED AT EACH LOCATION THAT THEY OCCUR.
4. THE CONTRACTOR IS RESPONSIBLE FOR COORDINATING THE WORK OF ALL TRADES AND FOR CHECKING DIMENSIONS. NOTIFY THE OWNER'S REPRESENTATIVE OF ANY DISCREPANCIES AND RESOLVE BEFORE PROCEEDING WITH THE WORK.
5. DO NOT SCALE THE DRAWINGS.
6. PROVIDE MEASURES NECESSARY TO PROTECT THE STRUCTURE DURING CONSTRUCTION. SUCH MEASURES INCLUDE, BUT MAY NOT BE LIMITED TO, BRACING AND SHORING FOR LOADS DURING CONSTRUCTION AND FOR TEMPORARY SUPPORT OF THE BUILDING. RETAIN A REGISTERED CIVIL ENGINEER WHOM IS PROPERLY QUALIFIED TO DESIGN BRACING, SHORING, ETC. VISITS TO THE SITE BY THE OWNER'S REPRESENTATIVE WILL NOT INCLUDE OBSERVATION OF THE ABOVE NOTED ITEMS.
7. INFORMATION SHOWN ON THE DRAWINGS RELATED TO EXISTING CONDITIONS REPRESENTS THE PRESENT KNOWLEDGE, BUT WITHOUT GUARANTEE OF ACCURACY. REPORT CONDITIONS THAT CONFLICT WITH THE CONTRACT DOCUMENTS TO THE OWNER'S REPRESENTATIVE. DO NOT DEVIATE FROM THE CONTRACT DOCUMENTS WITHOUT WRITTEN DIRECTION FROM THE OWNER'S REPRESENTATIVE.
8. CONTRACTOR SHALL REMOVE ALL CONSTRUCTION DEBRIS FROM THE SITE AND DISPOSE OFF SITE.
9. VERIFY ALL DIMENSIONS IN THE FIELD. NOTIFY ENGINEER OF ANY DISCREPANCIES BEFORE PROCEEDING WITH WORK.
10. ALL EXISTING HAZARDOUS MATERIALS SHALL BE REMOVED AND DISPOSED OF IN ACCORDANCE WITH LOCAL AND STATE CODES. NO NEW OR EXISTING CONSTRUCTION SHALL CONTAIN HAZARDOUS OR PROHIBITED MATERIALS.
11. THE CONTRACTOR SHALL TAKE ALL NECESSARY PRECAUTIONS TO PROTECT AREAS ADJACENT TO NEW CONSTRUCTION FROM NOISE, DEBRIS AND DUST THROUGHOUT THE PERFORMANCE OF THE CONTRACT.
12. ANY DAMAGE TO EXISTING UTILITIES OR FACILITIES SHALL BE REPAIRED OR REPLACED AT CONTRACTOR'S EXPENSE AND TO THE SATISFACTION OF THE OWNER.
13. CONTRACTOR SHALL BE SOLELY AND COMPLETELY RESPONSIBLE FOR CONDITIONS OF THE JOB SITE INCLUDING SAFETY OF PERSONS AND PROPERTY AND FOR ALL NECESSARY INDEPENDENT ENGINEERING REVIEWS OF THESE CONDITIONS.

14. CONTRACTOR SHALL MAINTAIN THE STREETS AND ANY OTHER PUBLIC RIGHTS-OF-WAY IN A CLEAN, SAFE AND USABLE CONDITION. ANY SPILLS OF SOIL, ROCK OR CONSTRUCTION DEBRIS MUST BE REMOVED FROM THE PUBLICLY OWNED PROPERTY DURING CONSTRUCTION AND UPON COMPLETION OF THE PROJECT.

15. THE ENGINEER-OF-RECORD SHALL PERFORM STRUCTURAL OBSERVATIONS PER CBC 1704. THE ENGINEER SHALL REPORT ANY OBSERVED DEFICIENCIES TO THE OWNER, CONTRACTOR AND BUILDING OFFICIAL, AND SUBMIT A FINAL SUMMARY REPORT STATING SITE VISITS HAVE BEEN MADE, NOTING ANY DEFICIENCIES, THAT CORRECTIVE WORK HAS BEEN COMPLETED, AND THAT CONSTRUCTION PROCEEDED IN GENERAL CONFORMANCE WITH THE APPROVED PLANS.

16. THE CONTRACTOR SHALL GIVE 48 HOURS NOTICE TO THE ENGINEER PRIOR TO ALL REQUIRED TESTING AND OBSERVATIONS U.O.N. CONTRACTOR SHALL CALL ENGINEER FOR OBSERVATION OF ALL FOUNDATION STEEL AND EXCAVATIONS PRIOR TO PLACING CONCRETE. CONTRACTOR SHALL CALL ENGINEER FOR HOLD DOWN OBSERVATION PRIOR TO SHEATHING, AND FRAMING, NAILING AND SHEAR WALL OBSERVATION PRIOR TO COVERING EITHER SIDE OF SHEATHING WITH FINISHED MATERIALS. THE CONTRACTOR SHALL CALL ENGINEER TO OBSERVE ALL STRUCTURAL MEMBERS AND CONNECTIONS FOR CONFORMANCE WITH THE CONSTRUCTION DOCUMENTS PRIOR TO CONCEALMENT WITH FINISH MATERIALS.

01400 SPECIAL INSPECTIONS

1. AN INDEPENDENT TESTING AGENCY AND SPECIAL INSPECTOR SHALL BE RETAINED BY THE CONTRACTOR TO PERFORM TESTS AND INSPECTIONS.
2. THE FOLLOWING ITEMS REQUIRE TESTS AND INSPECTIONS IN ACCORDANCE WITH THE REQUIREMENTS OF CHAPTER 17 - "STRUCTURAL TESTS AND INSPECTIONS" OF THE 2022 CALIFORNIA BUILDING CODE:
 - A. SINGLE PASS FILLET WELDS - PERIODIC VISUAL INSPECTION
3. IF INITIAL TESTS OR INSPECTIONS MADE BY THE OWNER'S TESTING AGENCY REVEAL THAT ANY PORTION OF THE WORK DOES NOT COMPLY WITH THE CONTRACT DOCUMENTS, ADDITIONAL TESTS, INSPECTIONS, AND NECESSARY REPAIRS WILL BE MADE AT THE CONTRACTOR'S EXPENSE.

05000 STRUCTURAL STEEL

1. STRUCTURAL STEEL, FABRICATION AND ERECTION METHODS SHALL CONFORM TO THE CURRENT ADDITION OF THE AMERICAN INSTITUTE OF STEEL CONSTRUCTION (AISC) "CODE OF STANDARD PRACTICE FOR STEEL BUILDINGS AND BRIDGES."
2. ALL STEEL SHOP DRAWINGS SHALL BE SUBMITTED TO THE ENGINEER FOR APPROVAL PRIOR TO FABRICATION AND INSTALLATION.
3. ALL STRUCTURAL STEEL SHALL BE PRIMED.
4. STEEL SHALL BE THE FOLLOWING:
 - ROLLED PLATES AND BARS - ASTM A36
 - ANGLES AND CHANNELS - ASTM A36
 - HSS RECTANGULAR SECTIONS - ASTM A500, GRADE C (50 KSI)
5. ALL WELDING SHALL BE IN ACCORDANCE WITH AWS D1.1. ELECTRODES SHALL BE E70x.

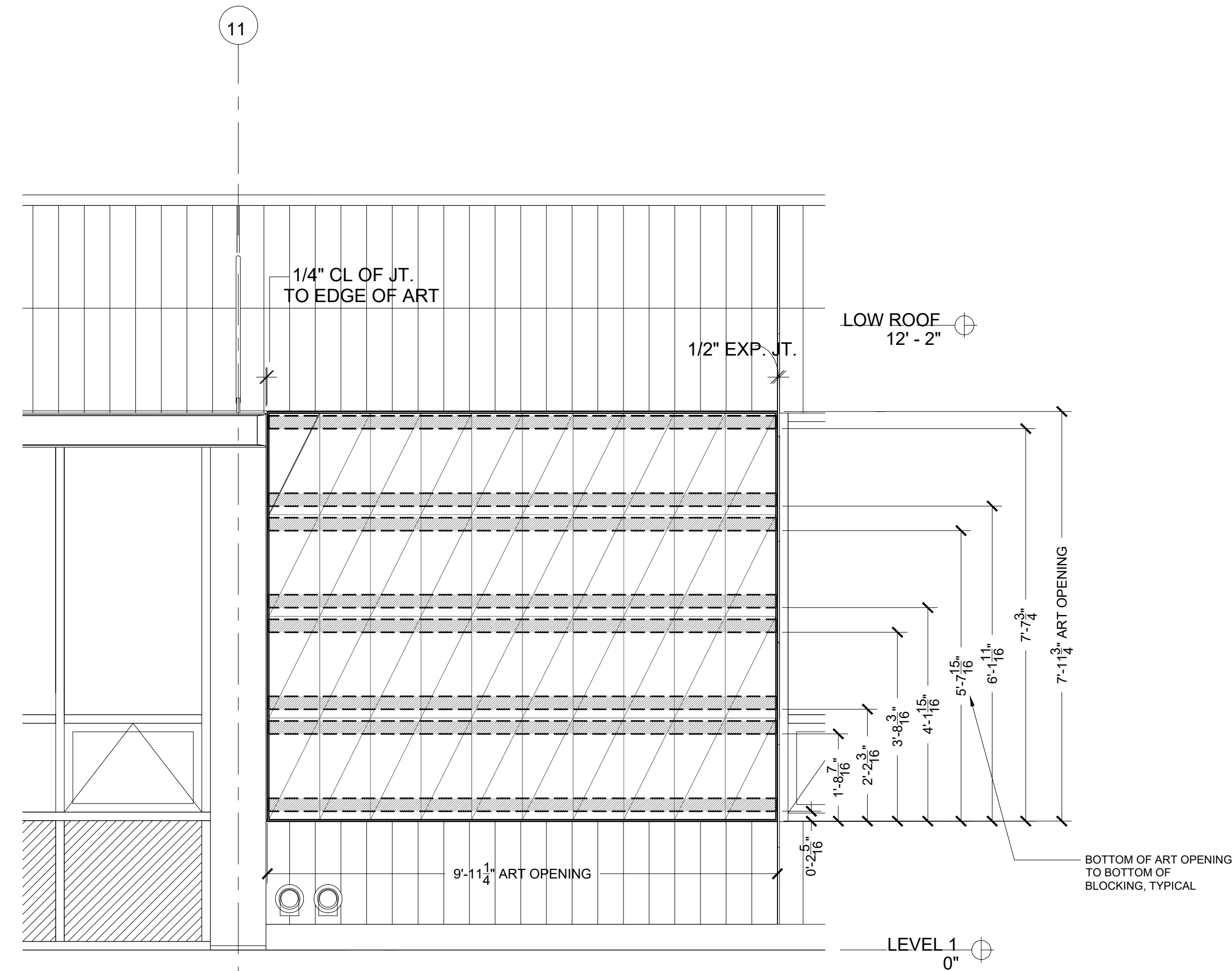
05400 COLD FORMED STEEL FRAMING (C.F.S.)

1. COLD FORMED FABRICATION SHALL CONFORM TO AISI SPECIFICATION FOR THE DESIGN OF COLD-FORMED STEEL STRUCTURAL MEMBERS.
2. ALL GALVANIZED STUDS AND/OR JOISTS 54, 68 AND 97 MIL SHALL BE FORMED FROM STEEL THAT CONFORMS TO THE REQUIREMENTS OF ASTM A446, GRADE D, WITH A MINIMUM YIELD STRENGTH OF 50,000 PSI.
3. ALL GALVANIZED STUDS AND/OR JOISTS 33 AND 43 MIL AND ALL GALVANIZED TRACK, BRIDGING AND ACCESSORIES SHALL BE FORMED FROM STEEL THAT CONFORMS TO THE REQUIREMENTS OF ASTM A446, GRADE A, WITH A MINIMUM YIELD STRENGTH OF 33,000 PSI.
4. ALL WELDS FOR COLD-FORMED STEEL SHALL BE IN ACCORDANCE WITH AISC AND AISI SPECIFICATIONS.
5. ALL WELDING SHALL BE DONE BY CERTIFIED WELDERS. ALL WELDS SHALL BE INSPECTED BY A CERTIFIED WELDING INSPECTOR. MINIMUM COLD-FORMED STEEL THICKNESS ALLOWED FOR FIELD WELDING C.F.S. TO STRUCTURAL STEEL IS 54 MIL AND FOR FIELD WELDING C.F.S. TO C.F.S. IS 43 MIL.

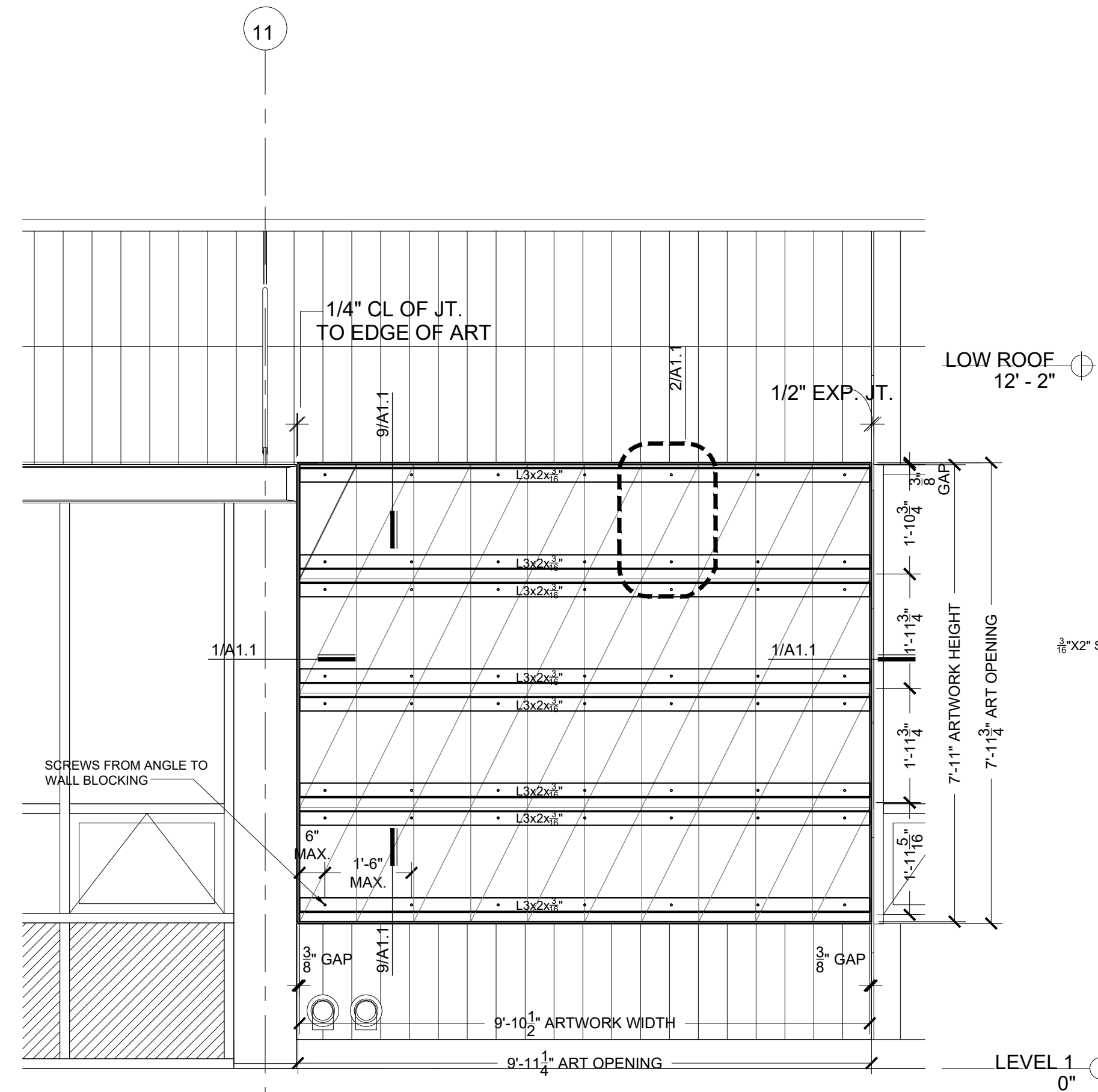
17000 DESIGN CRITERIA

DESIGN PER 2022 CALIFORNIA BUILDING CODE

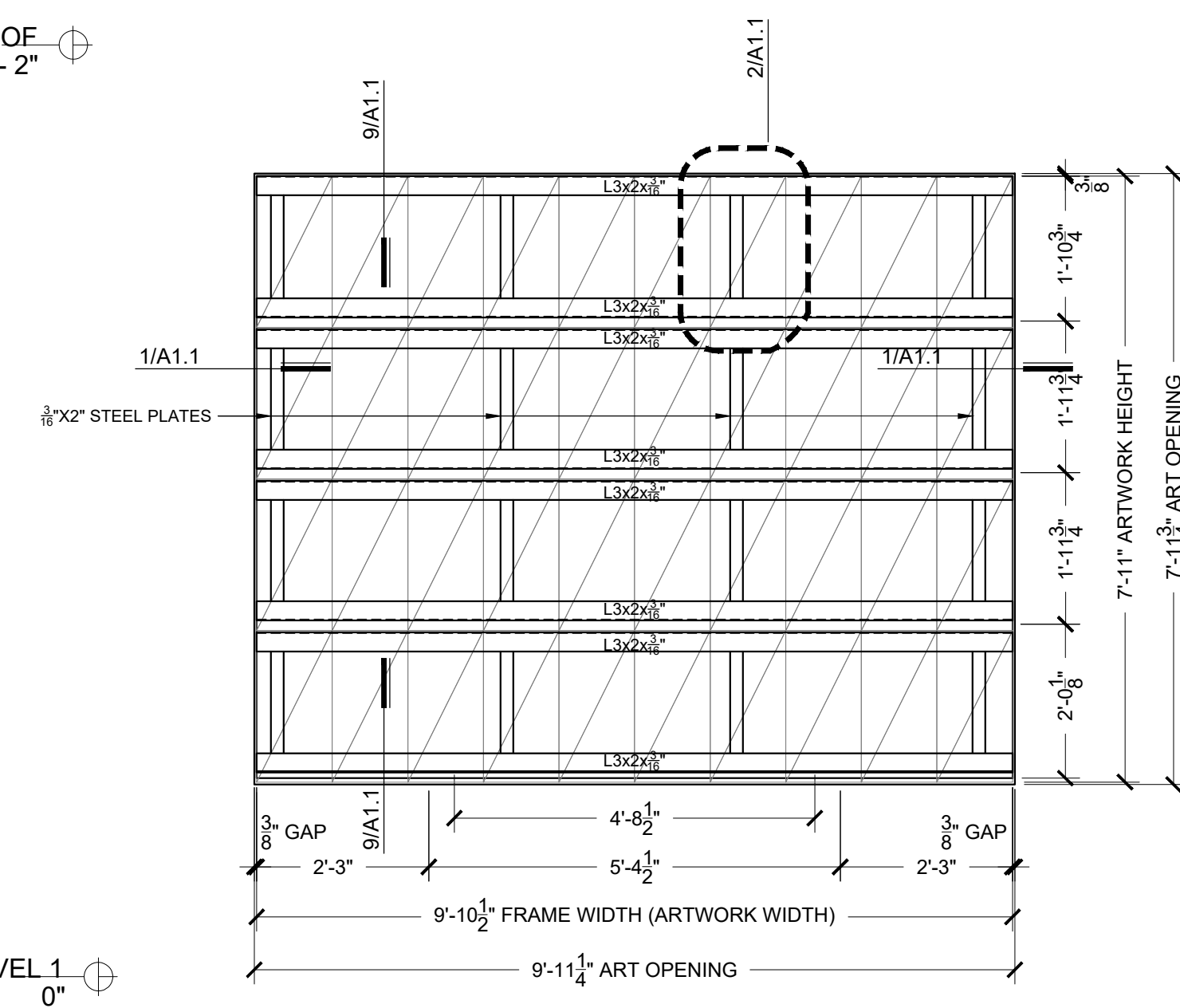
1. DEAD LOADS: VARY BASED ON ACTUAL ARTWORK WEIGHTS.
2. LIVE LOADS: 200 LB LATERAL LOAD AT 42" ABOVE FINISHED GRADE
3. SEISMIC DESIGN: SOIL TYPE D DEFAULT
BASE SHEAR $V = 1.7 W$ (ULTIMATE STRENGTH DESIGN), $R_p = 1.0$, $a_p = 1.25$, $S_1 = 0.649$, $S_{M1} = 1.923$, $S_{D1} = 1.28$
4. WIND DESIGN: RISK CATEGORY II,
 $V_{ult} = 91$ MPH (3 SECOND GUST)
EXPOSURE C
 $G_{CPI} = +/- 0.18$



3 BLOCKING IN WALL FOR ARTWORK ATTACHMENT (BY OTHERS)
1/4" = 1'-0"



2 PROPOSED WALL SUPPORT ELEVATION
1/4" = 1'-0"



1 PROPOSED ART FRAME ELEVATION
1/4" = 1'-0"



ARCHITECT:
ADBC Architecture Inc.
460 Mandana Blvd.
Oakland, CA 94610
Contact:
benjamin@darlingacorotis.com
510 330 6654

OWNERS:
Sanjay Vora
SF Arts Commission
San Francisco, CA
email: smvart@yahoo.com

PROJECT ADDRESS:
160 Hahn Street
San Francisco, CA
94134

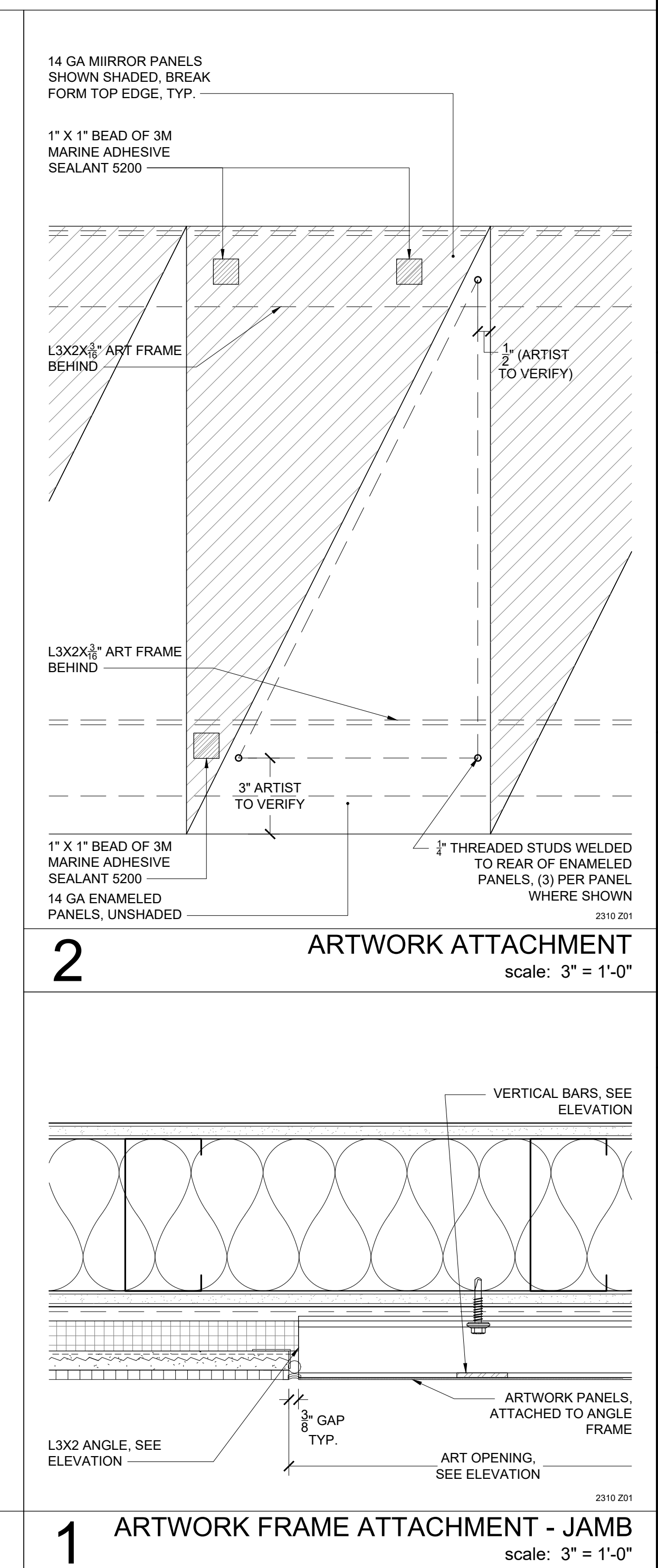
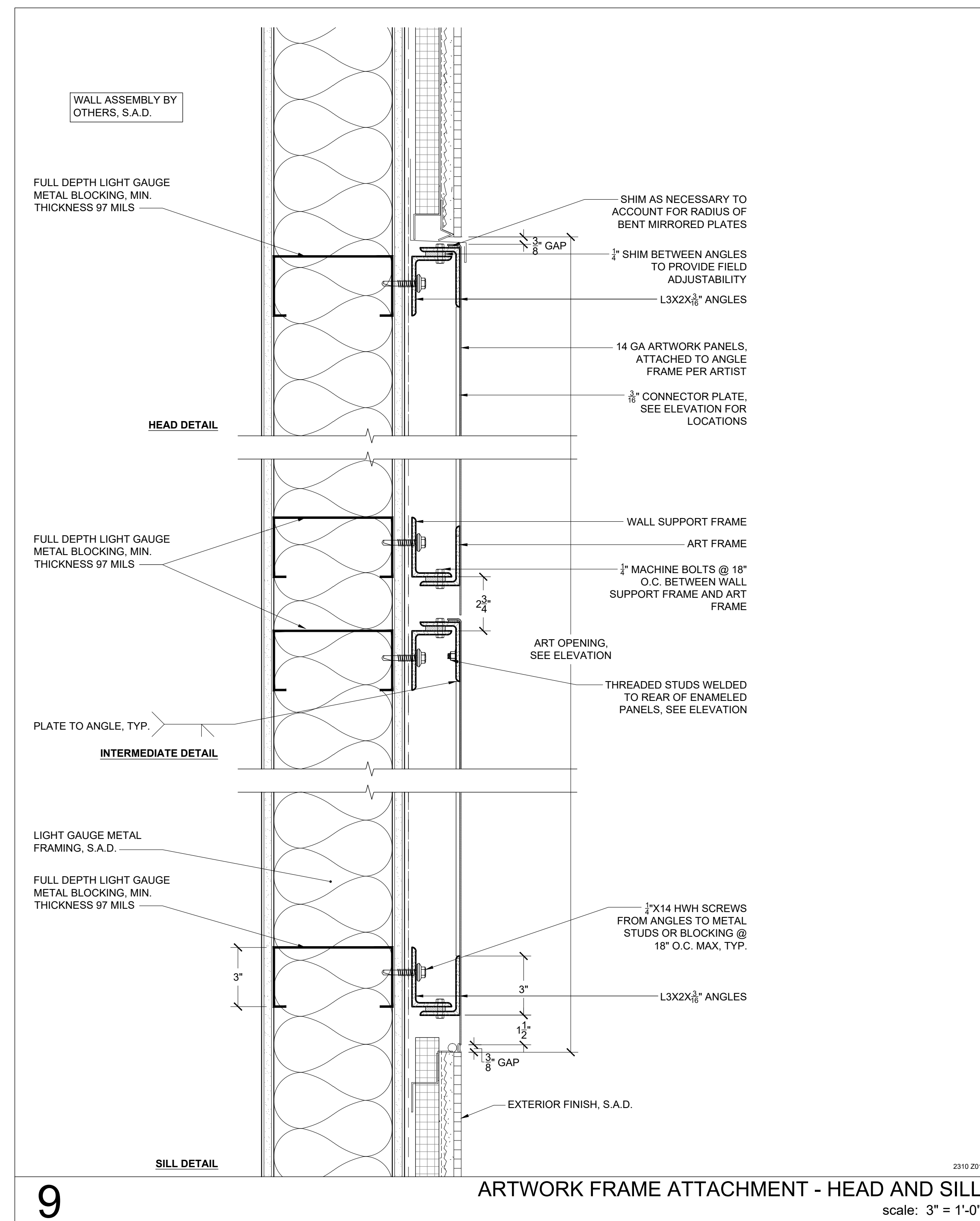
VORA
ARTWORK @
HERZ REC
CENTER

rev.	issue	date
	SFAC REVIEW	12/13/23

PROPOSED ARTWORK
STRUCTURAL
ELEVATION

A1.0

sheet



Public Comment

Item 10: Herz Recreation Center

Item 10: Herz Recreation Center

Action

Motion to approve Construction Document and Final Design deliverables by Sanjay Vora for the Herz Recreation Center Public Art Project.

Item 11: Staff Report

Discussion

Presenter: Mary Chou
Presentation Time: Approximately 5 minutes

Public Comment

Item 11: Staff Report

Item 12: New Business and Announcements

Discussion

(This item is to allow Commissioners to introduce new agenda items for consideration.)

Public Comment

Item 12: New Business and Announcements

Item 11: Adjournment

Action