

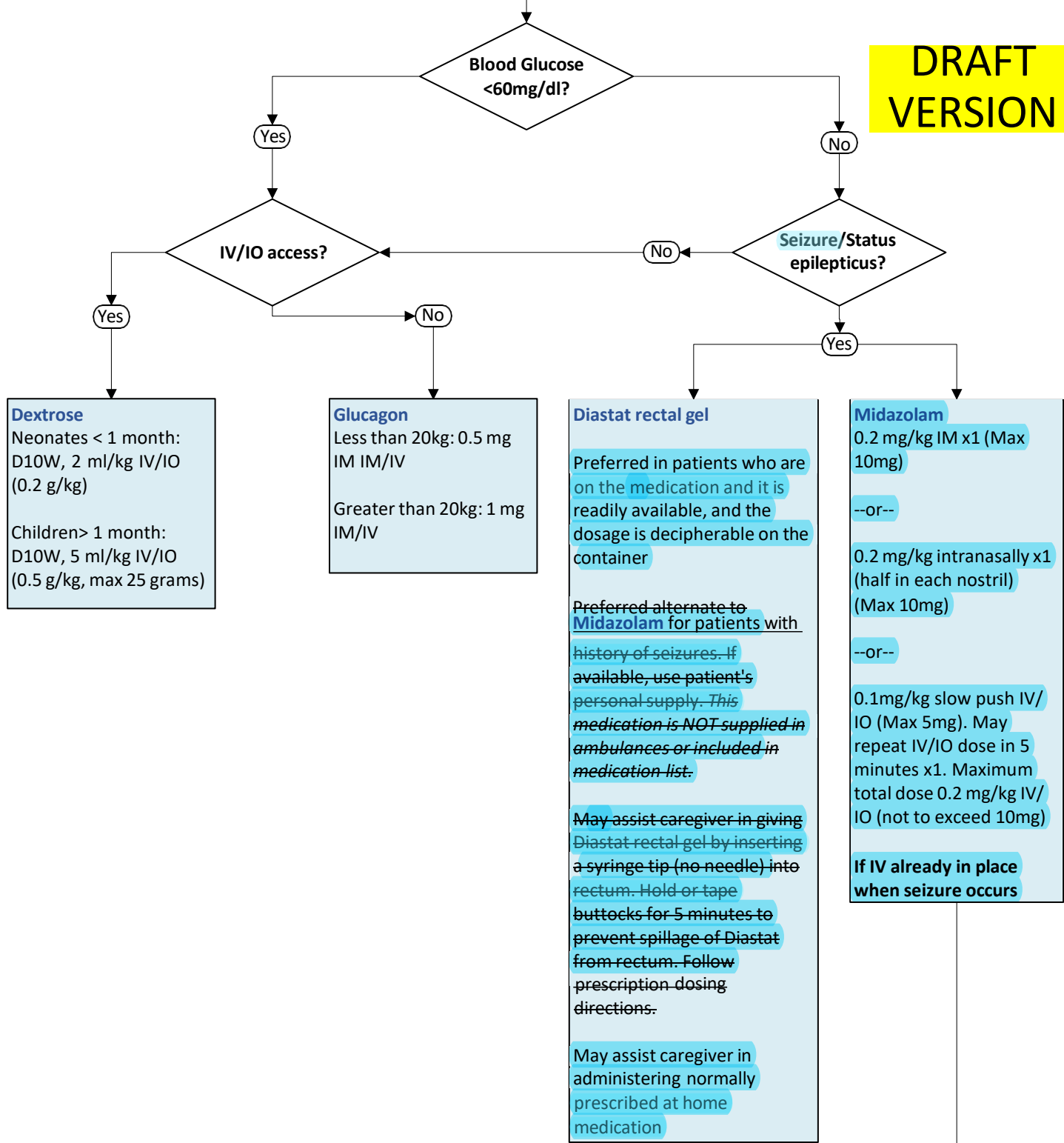
8.10 PEDIATRIC SEIZURE

BLS – FAQ Link

Assess **Vital Signs**, ABC's and responsiveness, NPO, **Oxygen**, and **cooling measures if fever present**
 Transport in left lateral recumbent position if no C-spine injury suspected

ALS

**DRAFT
VERSION**



Dextrose
 Neonates < 1 month:
 D10W, 2 ml/kg IV/IO
 (0.2 g/kg)

 Children > 1 month:
 D10W, 5 ml/kg IV/IO
 (0.5 g/kg, max 25 grams)

Glucagon
 Less than 20kg: 0.5 mg
 IM IM/IV

 Greater than 20kg: 1 mg
 IM/IV

Diastat rectal gel
 Preferred in patients who are on the medication and it is readily available, and the dosage is decipherable on the container


 Preferred alternate to **Midazolam** for patients with history of seizures. If available, use patient's personal supply. *This medication is NOT supplied in ambulances or included in medication list.*

 May assist caregiver in giving Diastat rectal gel by inserting a syringe tip (no needle) into rectum. Hold or tape buttocks for 5 minutes to prevent spillage of Diastat from rectum. Follow prescription dosing directions.

 May assist caregiver in administering normally prescribed at home medication

Midazolam
 0.2 mg/kg IM x1 (Max 10mg)
 --or--
 0.2 mg/kg intranasally x1 (half in each nostril) (Max 10mg)
 --or--
 0.1mg/kg slow push IV/IO (Max 5mg). May repeat IV/IO dose in 5 minutes x1. Maximum total dose 0.2 mg/kg IV/IO (not to exceed 10mg)

If IV already in place when seizure occurs

 **Make Base Hospital Contact**
 If seizure activity continues after maximum dose is reached and additional doses are required, or status epilepticus is present with hypotension

Effective:xxxxxxx
 Supersedes: 10/29/18

8.10 PEDIATRIC SEIZURE EMSAC November 2023

BLS Treatment

- Assess **vital signs**, airway, breathing, circulation and responsiveness.
- **NPO**
- **Oxygen** as indicated.
- ~~Cooling measures as indicated~~
- ~~Provide Spinal Motion Restriction as indicated or position of comfort as indicated.~~
- Transport in left lateral recumbent position if no C-spine injury is suspected.
- ~~Cooling measures if fever present.~~

ALS Treatment

- IV or IO of **Normal Saline** at TKO.
 - Check blood glucose. If blood glucose <60 mg/dl: administer **Dextrose**.
 - **Neonates <1 month: D10W, 2ml/kg IV/IO (0.2g/kg)**
 - **Children >1 month: D10W, 5ml/kg IV/IO (0.5g/kg. Max 25 gram)**
 - If no IV or IO access: administer **Glucagon**.
 - **Less than 20kg: 0.5mg IM/IV**
 - **Greater than 20kg: 1mg IM/IV**
 - If status epilepticus is present ~~AND SBP > 90~~, administer **Midazolam or Diastat rect gel**:
 - **Status epilepticus is continuous seizure activity lasting > 5 minutes OR multiple seizures without regaining consciousness between seizures.**
 - Midazolam:
 - **0.2 mg/kg IM x1 (Max 10mg)**
 - **0.2 mg/kg intranasally x1 (half in each nostril) (Max 10mg)**
 - **0.1 mg/kg slow push IV/IO (max 5mg). May repeat IV/IO dose in 5 min x1. Maximum total dose 0.2mg/kg IV/IO (not to exceed 10mg)**
- ~~Status epilepticus is continuous seizure activity lasting > 5 minutes OR multiple seizures without regaining consciousness between seizures.~~
- **Administer Midazolam IV only if IV in place when seizure occurs.**

8.10 PEDIATRIC SEIZURE EMSAC November 2023

○ ~~If patient has~~ Diastat rectal gel:

- ~~Preferred alternate to Midazolam for patients with a history of seizures.~~

If ~~available, use patient's personal supply. This medication is NOT supplied in ambulances or included in medication list. for personal use, this may be substituted for IN, IV or IO Midazolam solution.~~ May assist caregiver in giving Diastat rectal gel by inserting a syringe tip (no needle) into rectum. ~~Hold or tape buttocks for 5 minutes to prevent spillage of Diastat from rectum. Follow prescription dosing directions.~~

Preferred in patients who are on the medication and it is readily available, and the dosage is decipherable on the container. May assist caregiver in administering normally prescribed at home medication

DRAFT

8.10 PEDIATRIC SEIZURE EMSAC November 2023

Base Hospital Contact Criteria

~~Requests for additional **Midazolam** if status epilepticus continues after second dose, or if status epilepticus is present and SBP is less than or equal to 90. If seizure activity continues after maximum dose of midazolam is reached and additional doses are required or status epilepticus present with hypotension~~