



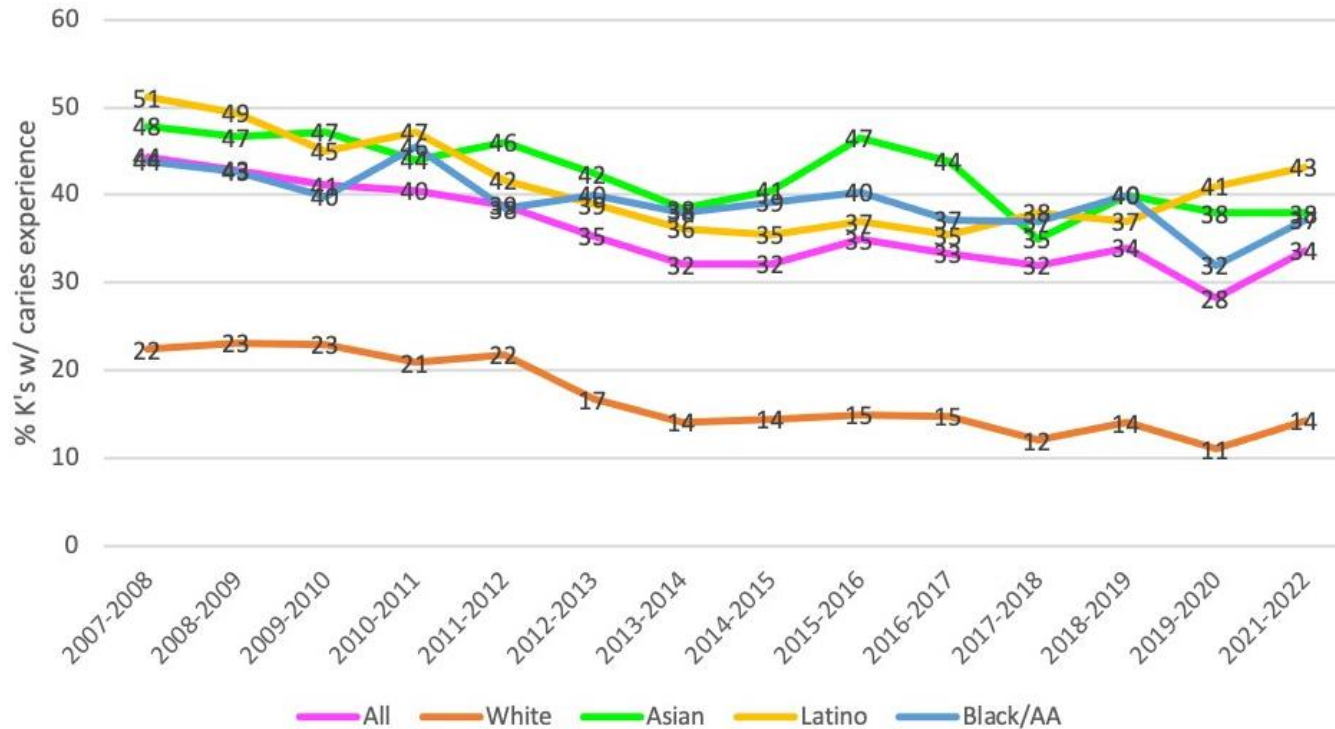
# School-Based Oral Health Program

San Francisco Department of  
Public Health



# Tooth Decay

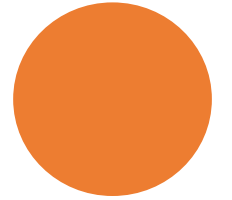
SFUSD Kindergarteners Caries Experience  
by Race/Ethnicity



- Tooth decay is the most common chronic childhood disease
- Tooth decay impacts overall health, developmental, and social well-being
- Prior to COVID-19, the #1 reason children missed school was tooth decay
- Increases parents' absences from work
- 100% preventable

# Cavity Prevention

- Brushing with fluoride toothpaste
- Regular dental visits
- Fluoride varnish
- Drinking San Francisco tap water
- Minimize sugar sweetened beverages
- Dental Sealants!!



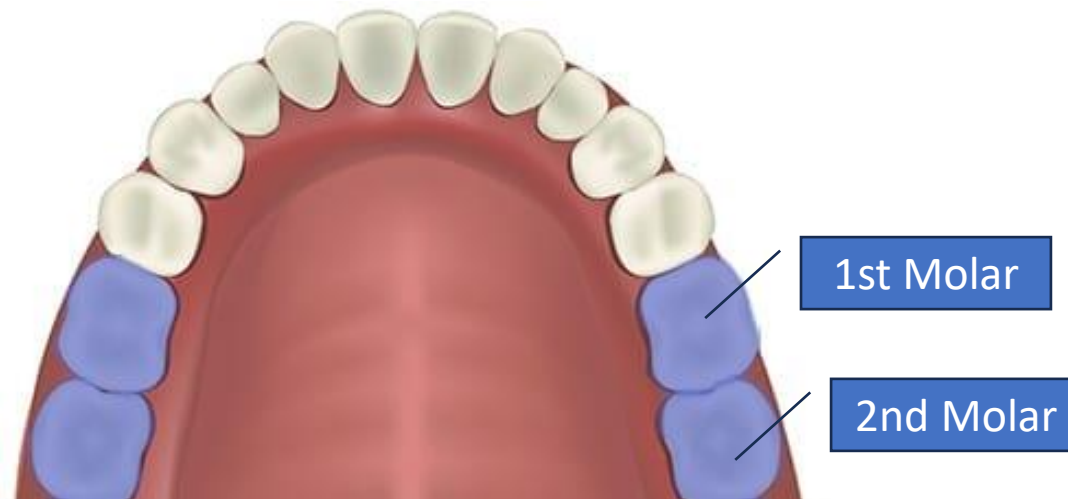
# Dental Sealants

- The most likely part of the tooth to get a cavity is the biting surface of the tooth
- Dental sealants are thin coatings painted on the biting surfaces of the first and second molars



# Sealant Timeline

---



## *Eruption timing of molars:*

6-8 y/o: 1st Permanent molars (2nd Grade)

9-12 y/o: 2nd Permanent Molars (5th Grade)

# School- Based Oral Health Program

- 1997: Dept. of Public Health, Dental Services school-based sealant program began
  - Served 3 schools
- Grew to annually serve 12-14 elementary schools
- SDDT Funding \$350,000 allowed for...
  - Staff Expansion
    - Two Registered Dental Hygienists (RDH)
  - Site Expansion
    - 29 Schools during the 2022-2023 SY
- 2023-24: Now expanded to 30 schools!



# School-Based Sealant Program Sites

---

Legacy & SDDT Funded Schools

Caries Incidence (Highest Decay-> Lowest Decay)		
Caries Rank	School	District
1	Cleveland	Excelsior
2	Drew	Vis. V/bayview
3	Guadalupe	Excelsior
4	Mission Ed Center	Mission
5	Bret Harte	Vis. V/bayview
6	El Dorado	Vis. V/bayview
7	Carver	Vis. V/bayview
8	Moscone	Mission
9	J. Serra	Mission
10	Malcolm X	Vis. V/bayview
11	Hillcrest	Vis. V/bayview
12	Edwin & Anita Lee	Chinatown
13	JY Chin	Chinatown
14	Marshall	Mission
15	ER Taylor	Vis. V/bayview
16	Vis Valley	Vis. V/bayview
17	Bryant	Mission
18	Sanchez	Mission
19	Carmichael	SOMA
20	Chavez	Mission
21	Redding	TL

# Data-Based Decision

- Schools with highest percentage of free and reduced lunch
- Schools with highest cavity rates in Kindergartners





# Legacy Schools

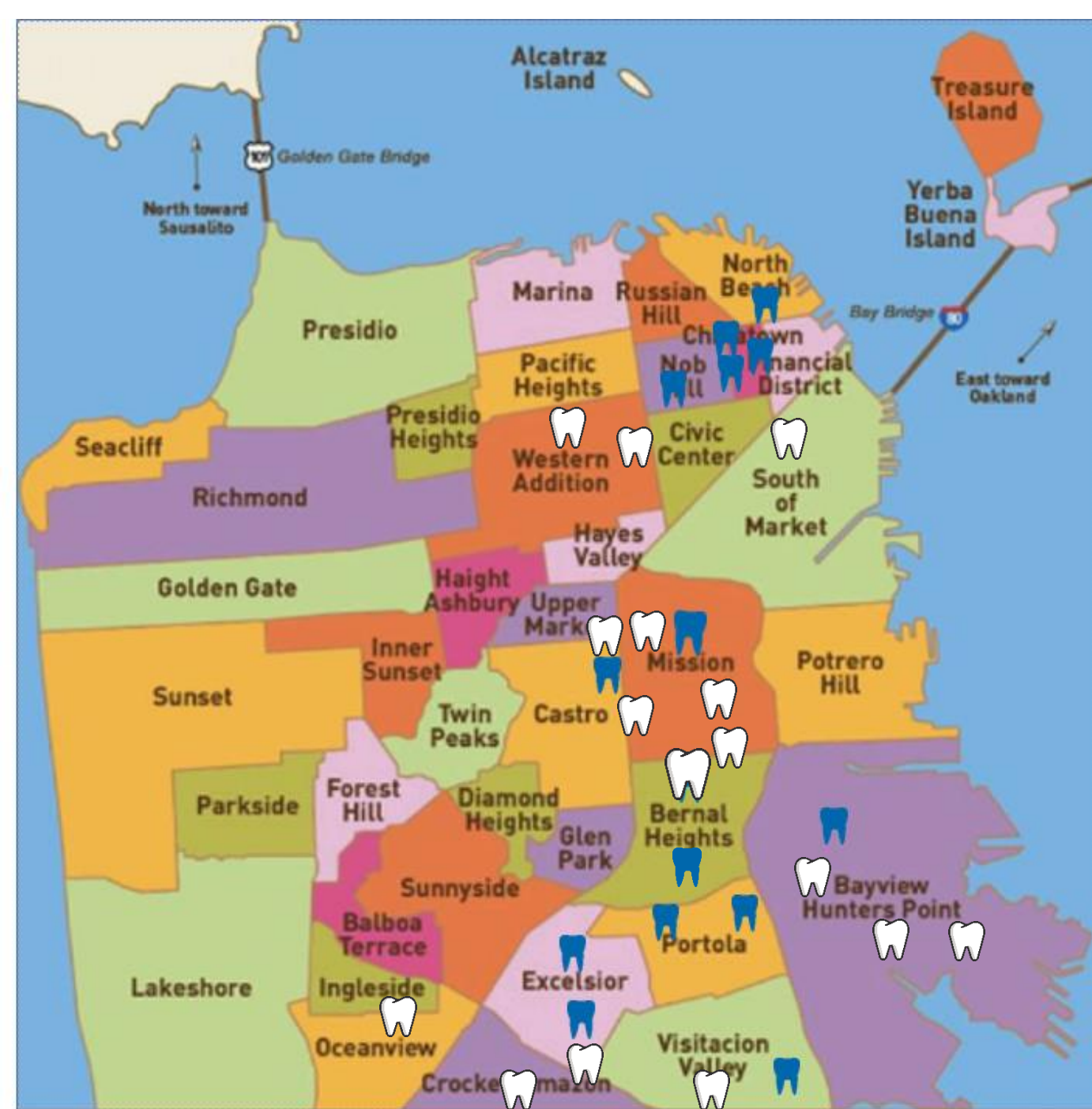
- Visitation Valley
- Hillcrest
- ER Taylor
- Cleveland
- J. Serra
- Monroe
- Moscone
- Mission Education Center (newcomer, K-5)
- Chinese Education Center (newcomer, K-5)
- Parker
- JY Chin
- Lau
- Spring Valley
- Willie Brown Middle School (all grades)





# SDDT Expansion

- Sheridan
- Redding
- Guadalupe
- El Dorado
- Sanchez
- Bret Harte
- Leonard Flynn
- Longfellow
- Marshall
- Carver
- Bessie Carmichael (K-8)
- Dr. Charles Drew
- William Cobb
- Paul Revere (K-8)
- Buena Vista (K-8)
- Chavez





## *Success*

- *Site Expansion*

## *Challenges*

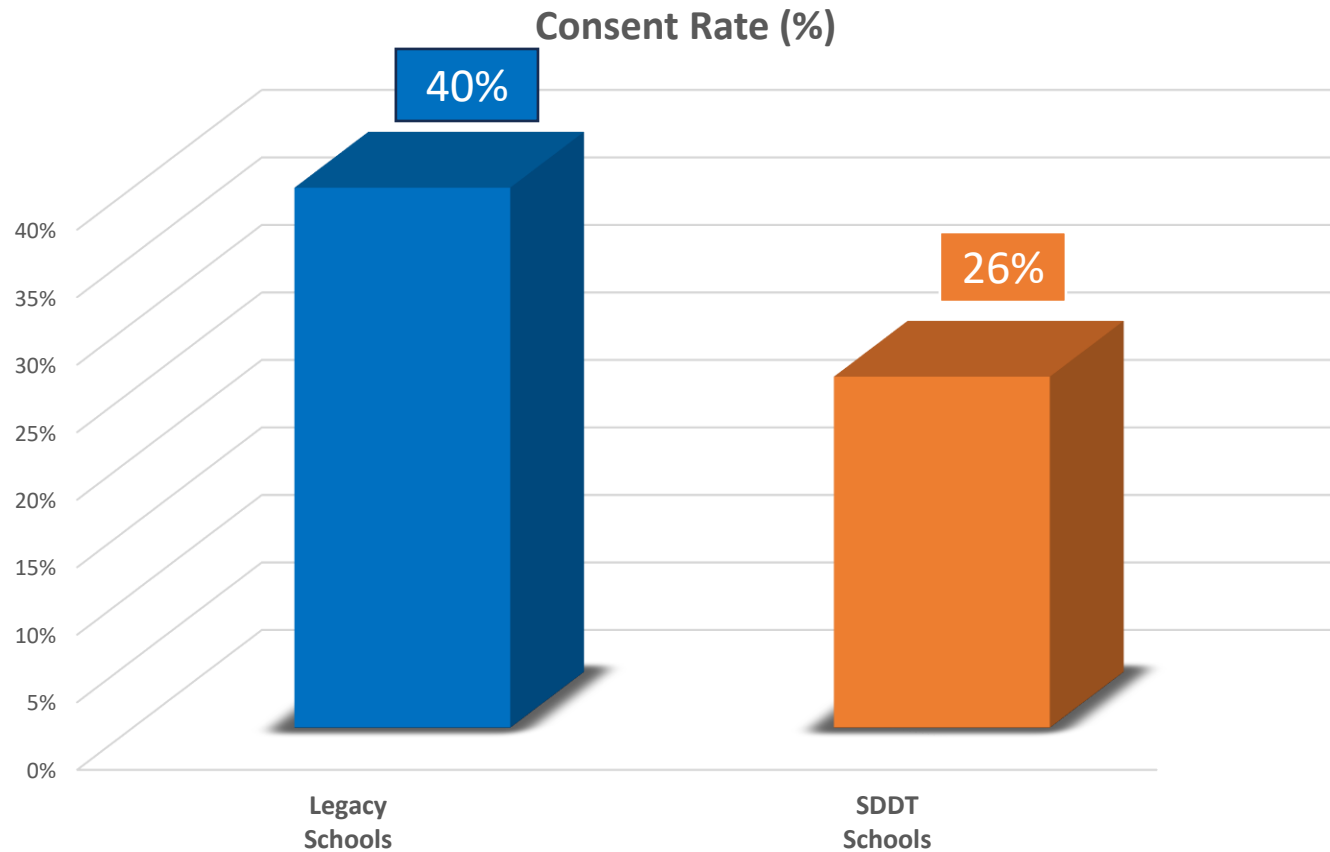
- *Increasing consent rates in new SDDT schools*
- *Close disparities in consent rates*



# Results

- 1,093 children in 29 schools received sealants
- 777 students in 14 Legacy Schools
- 316 Students in 15 SDDT Schools

# Consent Rates: Legacy vs. SDDT Schools



# Consent Rates by Race/Ethnicity

<b>Ethnicity</b>	<b>Total Students</b>	<b>Percent</b>
<b>Chinese</b>	<b>584</b>	<b>73%</b>
Not Specified	205	53%
<b>Hispanic</b>	<b>1219</b>	<b>48%</b>
<b>Filipino</b>	<b>129</b>	<b>47%</b>
<b>Black or African American</b>	<b>179</b>	<b>46%</b>
Two or More	168	35%
White	95	35%

# Solutions

## Improving processes

- Parent-Teacher Conferences
- Digital consents

Oral Health Education Materials

Tasks Forces

SFUSD

Parent Liaisons

AmeriCorp Member

# Oral Health Instructions

Tips for brushing & flossing your teeth



**Brush twice a day!**  
Use a soft bristle brush  
Brush for 2 minutes minimum.



## Gently Brush

Use horizontal strokes and circular motions. Brush all surfaces of your teeth; palate & tongue side. Wait 20 minutes after eating to brush your teeth.



## Don't forget to brush your tongue

Use a toothbrush or tongue scraper to help remove bacteria on the tongue.



## Floss once a day

Use a C-wrap technique to help remove bacteria in-between teeth surfaces and below the gum line.



# SELLANTES DENTALES GRATIS



Programa Escolar de Salud Dental  
SFDPH Dental

## ¿Qué son los Sellantes?

- Los sellantes o sellos dentales son un líquido blanco que se aplica en los surcos de las muelas permanentes.
- Ayudan a prevenir las caries

## Diente sin sellante



Se aplica el sellante



Diente con sellante



## ¿Por qué los necesita mi niño(a)?



- Las muelas tienen ranuras o surcos que son susceptibles a las caries.
- Las bacterias y los alimentos se atascan en los surcos y son difíciles de mantener limpios

## ¿Quién debe obtener Selladores?

Los niño(a)s que ya tienen sus muelas permanentes:  
1ras Muelas Permanentes salen a los 5 - 7 años  
2das Muelas Permanentes salen a los 11- 14 años



## ¿Dónde se colocan los Selladores?

- En muelas permanentes que tienen surcos pronunciados y profundos



## ¿Cómo se colocan?

- Primero se limpian las muelas
- Después se aplica el líquido sellador en los surcos.
- El procedimiento NO causa dolor

**WHAT HAPPENS TO MY CHILD'S TEETH?**  
When your child falls asleep with a bottle/sippy cup, the sugary liquid pools behind the front teeth, forming cavities—formerly known as baby bottle tooth decay. This includes milk and juice which contain natural sugars.

The progression of cavities on top front teeth

HEALTHY FOOD & DRINKS

BRUSH & FLOSS

HI FRIENDS!!

DENTAL SEALANTS

LET'S CHECK OUR TEETH!

DRINK WATER

SNACKS OK

VITAMIN C

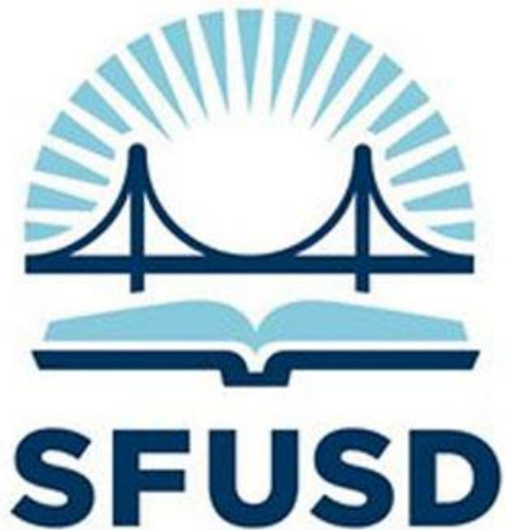
# 牙科 密封膠

16





Dental Robinhood




NICOS Chinese Health Coalition



**CARECENSF.ORG**  
CENTRAL AMERICAN RESOURCE CENTER

# Evaluation

- Developed an evaluation form to be completed by a school staff member that worked closely with us during our screening and dental sealant placement



## SCHOOL BASED ORAL HEALTH PROGRAM

San Francisco Department of Public Health  
EVALUATION FORM

Please complete our evaluation form to help us better serve your school.  
We will collect the evaluation forms on the day of screening/  
scheduled Sealants/Fluoride Varnish.

1. The process was efficient and easy to understand; from scheduling to Oral Health Education and screening/Sealants/Fluoride Varnish.

STRONGLY AGREE    AGREE    NEUTRAL    DISAGREE    STRONGLY DISAGREE    NOT APPLICABLE

2. The children enjoyed the Oral Health Education portion and learned proper homecare (brushing and flossing) and healthy choices for eating and drinking.

STRONGLY AGREE    AGREE    NEUTRAL    DISAGREE    STRONGLY DISAGREE    NOT APPLICABLE

3. The screening/Sealants/Fluoride Varnish were completed in a timely manner.

STRONGLY AGREE    AGREE    NEUTRAL    DISAGREE    STRONGLY DISAGREE    NOT APPLICABLE

4. Class time was minimally interrupted.

STRONGLY AGREE    AGREE    NEUTRAL    DISAGREE    STRONGLY DISAGREE    NOT APPLICABLE

5. The School Based Oral Health Team was professional and friendly.

STRONGLY AGREE    AGREE    NEUTRAL    DISAGREE    STRONGLY DISAGREE

6. Overall, the experience was pleasant.

STRONGLY AGREE    AGREE    NEUTRAL    DISAGREE    STRONGLY DISAGREE

7. Please let us know any concerns, questions, suggestions, and any feedback regarding our service.

\_\_\_\_\_

\_\_\_\_\_

\_\_\_\_\_

Please tell us your school job title (Nurse, Teacher, Principal, Secretary, After-School care, etc.)

\_\_\_\_\_ Date \_\_\_\_\_

School Job Title

**THANK YOU FOR YOUR TIME & PARTICIPATION!**

2023

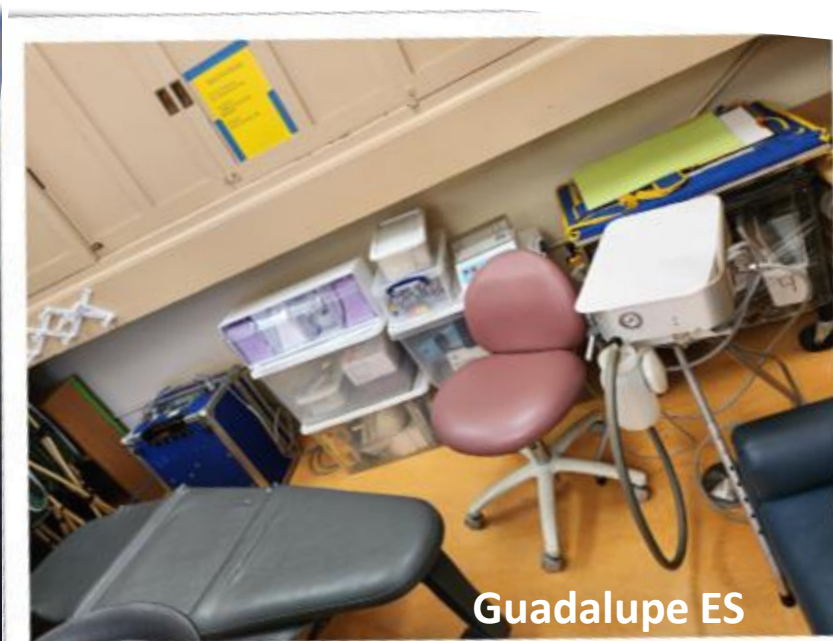
# Intersection with Care Coordination Funding

	Class II- Some cavities	Class III- Urgent- pain, swelling
All sealant schools (2nd & 5th)	273	29
All Kindergarten	604	95
<b>Total</b>	<b>881</b>	<b>124</b>

- School-based program staff refer kids with dental problems to SDDT-funded SFUSD care-coordination staff (\$200,000)
- Funding not allocated by Mayor's office this year has been replaced, one-time-only
- What will happen if Mayor's office does not reinstate \$200,000 care coordination funding next year?



ER Taylor ES



Guadalupe ES



Visitacion Valley ES



Lau ES



JY Chin ES



Thank you,  
SDDTAC!!!!

