

The logo for the San Francisco Arts Commission, featuring the lowercase letters 'sfac' in a white, stylized, sans-serif font on a red square background.

san francisco  
arts commission

# San Francisco Arts Commission Meeting

---

**September 20, 2023**

# **Item 1: Call to Order, Roll Call, Agenda Changes, Land Acknowledgement**

---

- Call to order
- Roll call / Confirmation of quorum
- Agenda Changes
- Ramaytush Ohlone Land Acknowledgement

## Public Comment via WebEx:

- Hover over your name in the attendee list and **click** on the hand icon to raise your hand.
- You will be **placed** in the public speaker queue once your hand is **raised**.
- When you are unmuted by the host, **click** “unmute” .
- Then you will see a **request** to be unmute window.
- Click** unmute and you will be **prompted** to **speak**.



## Public Comment via Phone:

- Dial 415-655-0001.
- Enter the Access Code: **2661 384 5786**
- Then **press # twice**.
- Then you will hear, **"You are muted."**
- In order to be added to the speaker line you must first **raise** your hand to speak.
- To raise your hand, dial **\* 3**
- You will be **unmute** when it is your time to speak. **THIS IS YOUR TIME TO SPEAK**
- Once your time has **expired**, your phone line will be **muted**.

Participants who wish to speak on other public comment periods may stay on the line and listen for the next public comment opportunity. For further inquiries, please contact:

[art-info@sfgov.org](mailto:art-info@sfgov.org).

# Land Acknowledgement

The San Francisco Arts Commission acknowledges that we are on the unceded ancestral homeland of the Ramaytush Ohlone who are the original inhabitants of the San Francisco Peninsula. As the indigenous stewards of this land and in accordance with their traditions, the Ramaytush Ohlone have never ceded, lost nor forgotten their responsibilities as the caretakers of this place, as well as for all peoples who reside in their traditional territory. As guests, we recognize that we benefit from living and working on their traditional homeland. We wish to pay our respects by acknowledging the ancestors, elders and relatives of the Ramaytush Community and by affirming their sovereign rights as First Peoples. As a department dedicated to promoting a diverse and equitable Arts and Culture environment in San Francisco, we are committed to supporting the traditional and contemporary evolution of the American Indian community.



*Antone Family (Tohono O'odham), 2019, Photo by Hulleah Tsinhnahjinnie*  
Left to right: Christine [seated], Melanie, Michelle and Arianna

## **Item 2: General Public Comment**

---

### *Discussion*

*(This item is to allow members of the public to comment generally on matters within the Committee's purview as well as to suggest new agenda items for the committee's consideration.)*

## Public Comment via WebEx:

- Hover over your name in the attendee list and **click** on the hand icon to raise your hand.
- You will be **placed** in the public speaker queue once your hand is **raised**.
- When you are unmuted by the host, **click** “unmute” .
- Then you will see a **request** to be unmute window.
- **Click** unmute and you will be **prompted** to **speak**.



## Public Comment via Phone:

- Dial 415-655-0001.
- Enter the Access Code: **2661 384 5786**
- Then **press # twice**.
- Then you will hear, **"You are muted."**
- In order to be added to the speaker line you must first **raise** your hand to speak.
- To raise your hand, dial **\* 3**
- You will be **unmute** when it is your time to speak. **THIS IS YOUR TIME TO SPEAK**
- Once your time has **expired**, your phone line will be **muted**.

Participants who wish to speak on other public comment periods may stay on the line and listen for the next public comment opportunity. For further inquiries, please contact:

[art-info@sfgov.org](mailto:art-info@sfgov.org).

# Item 3: Consent Calendar

---

## *Action*

1. Motion to approve *Natural Attraction V*, a mural design by Amanda Lynn. The mural will be installed on the building at 1080 Folsom St. at Moss St. in District 6. The mural measures approximately 80 ft. tall by 64 ft. wide on Folsom St.; 80 ft. tall by 90 ft. wide on Moss St. The artwork is funded by a Community Challenge Grant and will not become part of the Civic Art Collection.
2. Motion to approve *Nurturing Community at San Francisco Community School (SFC)*, a mosaic mural design by Ross Holzman. The mosaic mural will be installed on the building on the San Francisco Community School at 125 Excelsior Ave. at Excelsior Ave. in District 11. The work measures approximately 660 sq. ft. overall. The artwork is funded by a Community Challenge Grant and private funds and will not become part of the Civic Art Collection.
3. Motion to approve *I Love SF*, a mural design by Adam Fujita. The mural will be installed on the building at 1946 Van Ness Ave. at Jackson St. in District 3. The work measures approximately 20 ft. by 60 ft. The artwork is funded by a Community Challenge Grant and will not become part of the Civic Art Collection.
4. Motion to approve *The Poppied Rolling Hills of California*, a mural design by Matt Evans. The mural will be installed on the retaining wall at 201 College Ave. at Crescent Ave. in District 9. The work measures approximately 20 ft. by 60 ft. The artwork is funded by a Community Challenge Grant and will not become part of the Civic Art Collection.
5. Motion to approve *La Petite Prince*, a mural design by Marco Razo, which will be painted by David Benzler. The mural will be installed on the Good Prospect Community Garden Wall at 100 Cortland Ave. in District 9. The work measures approximately 28 in. by 280 in. The artwork is privately funded by Avenue Greenlight and will not become part of the Civic Art Collection.

# Item 3: Consent Calendar

---

## *Action*

6. Motion to approve *REY*, a mural design by Simón Malvaez. The mural will be installed on the Dore Street side of 1347 Folsom Street in District 6. The work measures approximately 10 ft. by 16 ft. The artwork is funded by MOHCD Cultural District and private funds and will not become part of the Civic Art Collection.

7. Motion to approve Construction Document Phase deliverables (Structural Engineering Drawings) for Mark Baugh-Sasaki's artwork for Pelican Park (formerly Transbay Block 3) public art project.

8. Motion to approve 7 mural designs by Jewelina Acosta to be installed on 7 SFMTA utility boxes along 16th Street in District 5. The artist was selected by the American Indian Cultural District (AICD). The murals are privately funded and will not become part of the Civic Art Collection. The locations of the boxes are:

- 1) 16th Street & Shotwell, Northeast Corner
- 2) 16th Street & South Van Ness, Southwest Corner
- 3) 16th Street & Capp, Northwest Corner
- 4) 16th Street & Mission, Northwest Corner
- 5) 16th Street & Guerrero, Southwest Corner
- 6) 16th Street & Dolores, Southeast Corner
- 7) Church Street & 16th, Southeast Corner

9. Motion to amend the locations for the four mural designs by Diego Gomez for the four utility boxes listed in RESOLUTION NO. 0807-23-126 from Leavenworth St. and Eddy St.; Ellis St. and Leavenworth St.; Leavenworth St. and O'Farrell St.; Hyde St. and Post St to Mason and O'Farrell, northeast corner; Mason and Ellis, northeast corner; Eddy and Mason, southwest corner; and Hyde and Post, northeast corner.



## Public Comment via WebEx:

- Hover over your name in the attendee list and **click** on the hand icon to raise your hand.
- You will be **placed** in the public speaker queue once your hand is **raised**.
- When you are unmuted by the host, **click** “unmute” .
- Then you will see a **request** to be unmute window.
- Click** unmute and you will be **prompted** to **speak**.



## Public Comment via Phone:

- Dial 415-655-0001.
- Enter the Access Code: **2661 384 5786**
- Then **press # twice**.
- Then you will hear, "You are muted."
- In order to be added to the speaker line you must first **raise** your hand to speak.
- To raise your hand, dial \* **3**
- You will be **unmute** when it is your time to speak. **THIS IS YOUR TIME TO SPEAK**
- Once your time has **expired**, your phone line will be muted.

Participants who wish to speak on other public comment periods may stay on the line and listen for the next public comment opportunity. For further inquiries, please contact:

[art-info@sfgov.org](mailto:art-info@sfgov.org).

## **Item 3: Consent Calendar**

---

**Motion to approve the consent calendar items.**

# Item 4: 2023 Art on Market Street Poster Series

---

**\*\*\*THIS ITEM HAS BEEN TABLED\*\*\***

## *Discussion and Possible Action*

**Discussion and Possible Action:** to approve the 12 final designs by Minnie Phan for the 2023 Art on Market Street Kiosk Poster Series.

**Presenter:** Craig Corpora

**Presentation Time:** Approximately 5 minutes

# Item 5: San Francisco Main Library – Dr. Maya Angelou

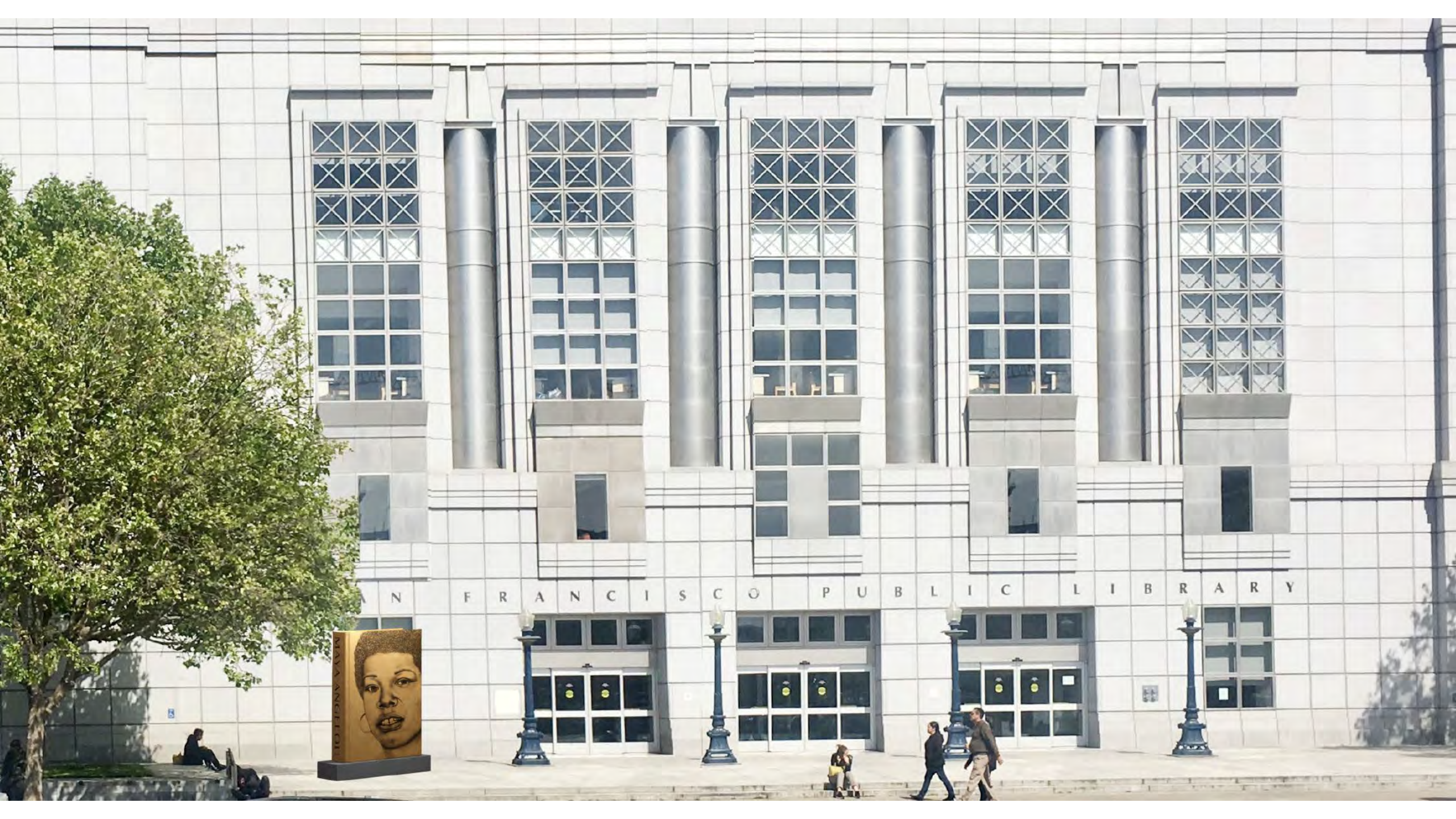
---

## *Discussion and Possible Action*

**Discussion of Possible Action:** to approve Design Development Phase deliverables (revised design) and Construction Document Phase deliverables (final mock-ups) by Lava Thomas for the San Francisco Main Library - Dr. Maya Angelou Sculpture Project.

**Presenter:** Aleta Lee

**Presentation Time:** Approximately 7 minutes



SAN FRANCISCO PUBLIC LIBRARY

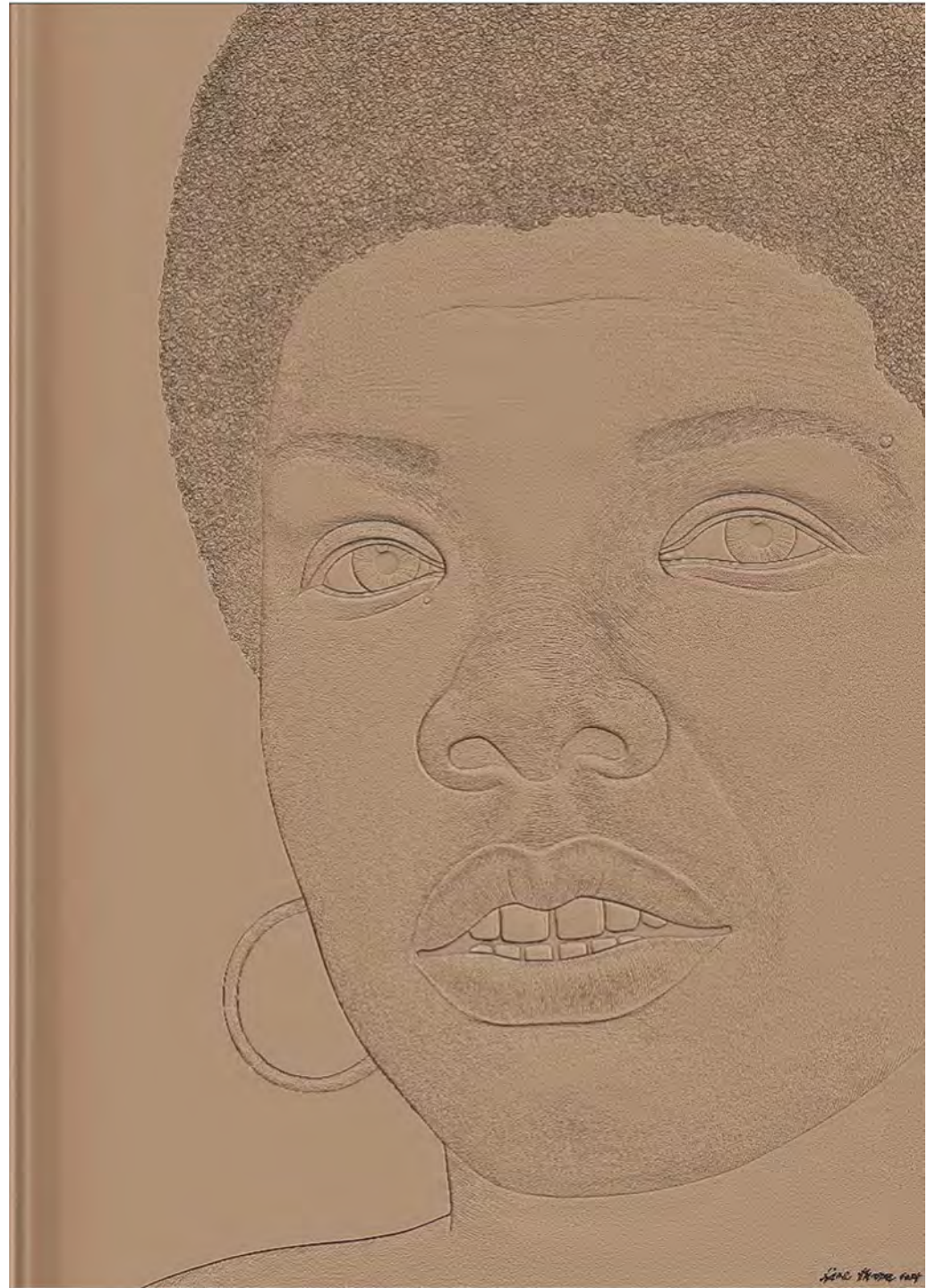
- Portrait of a Phenomenal Woman
- A Monument to Honor Dr. Maya Angelou for the San Francisco Main Library



PORTRAIT DEVELOPMENT



FINAL PORTRAIT





# INFLUENCES





Bronze with patina

RISE,

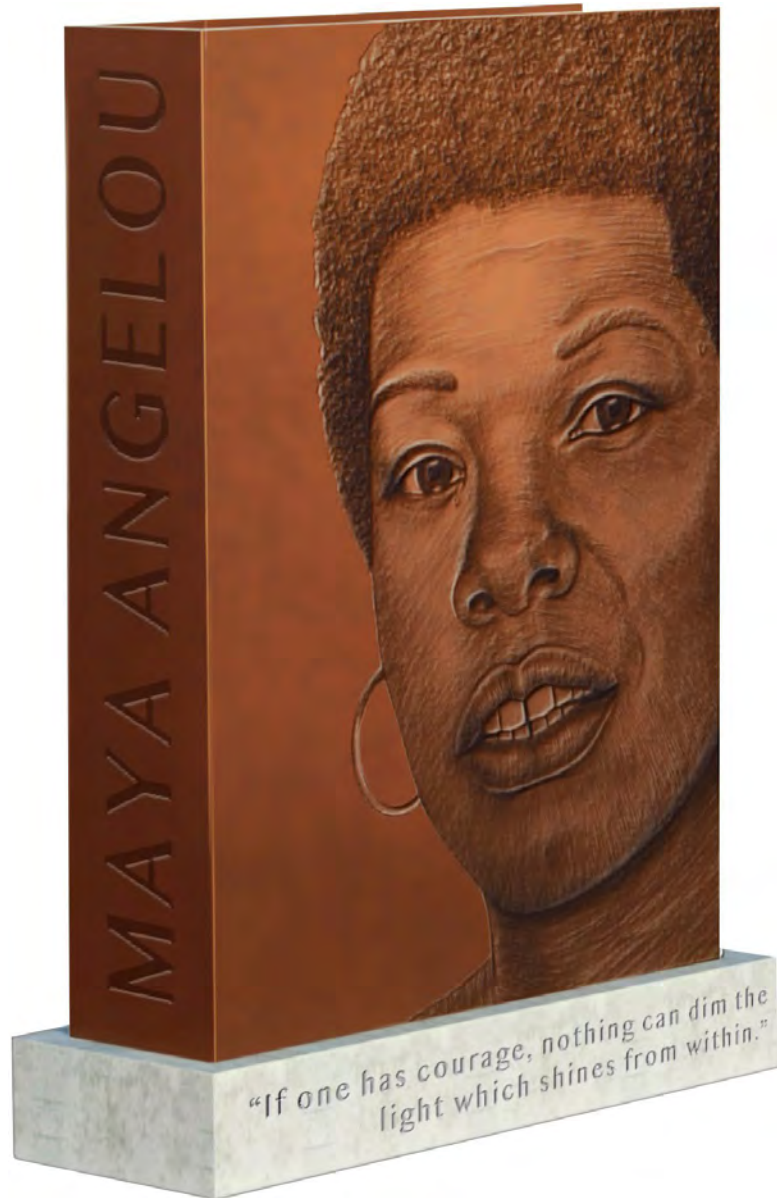
Engraved basalt

**“If one has courage, nothing can dim the  
light which shines from within.”**

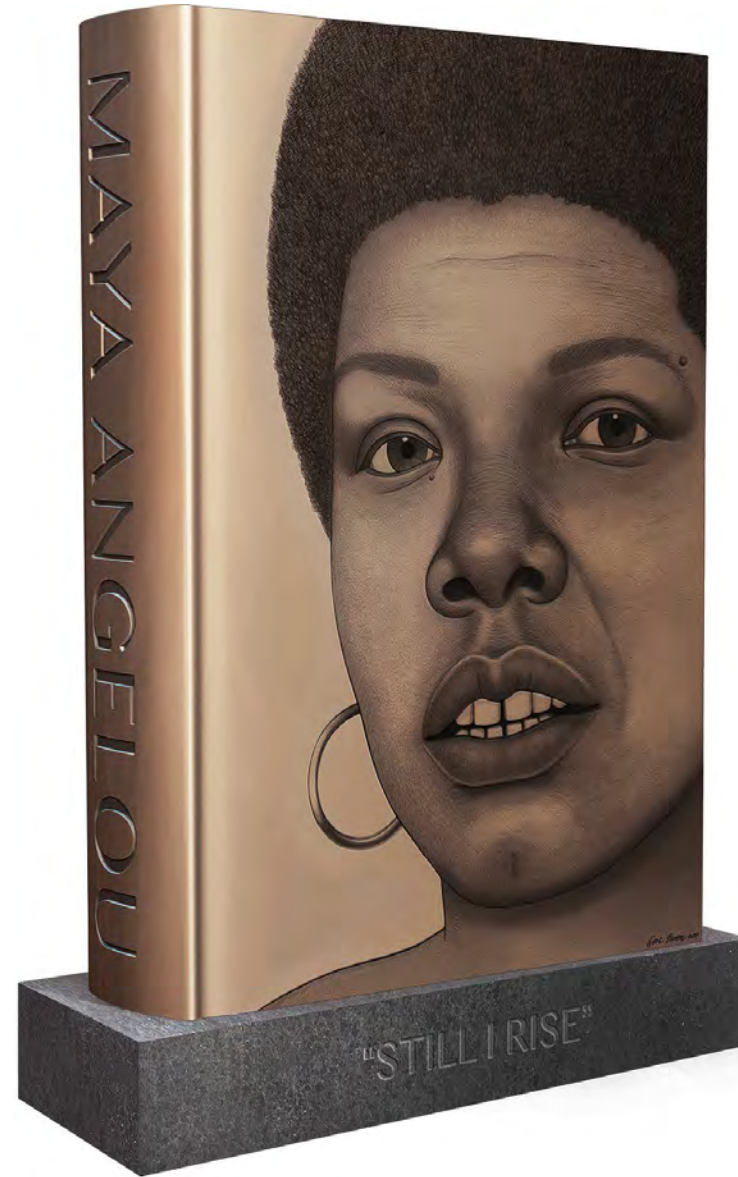
**“STILL I RISE”**

DESIGN ITERATIONS

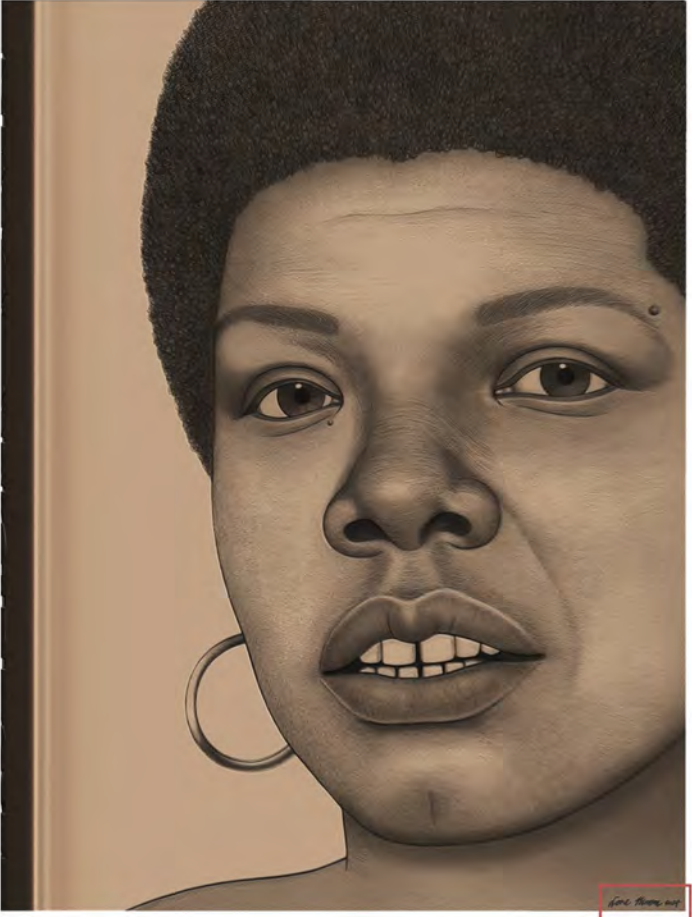
Original design



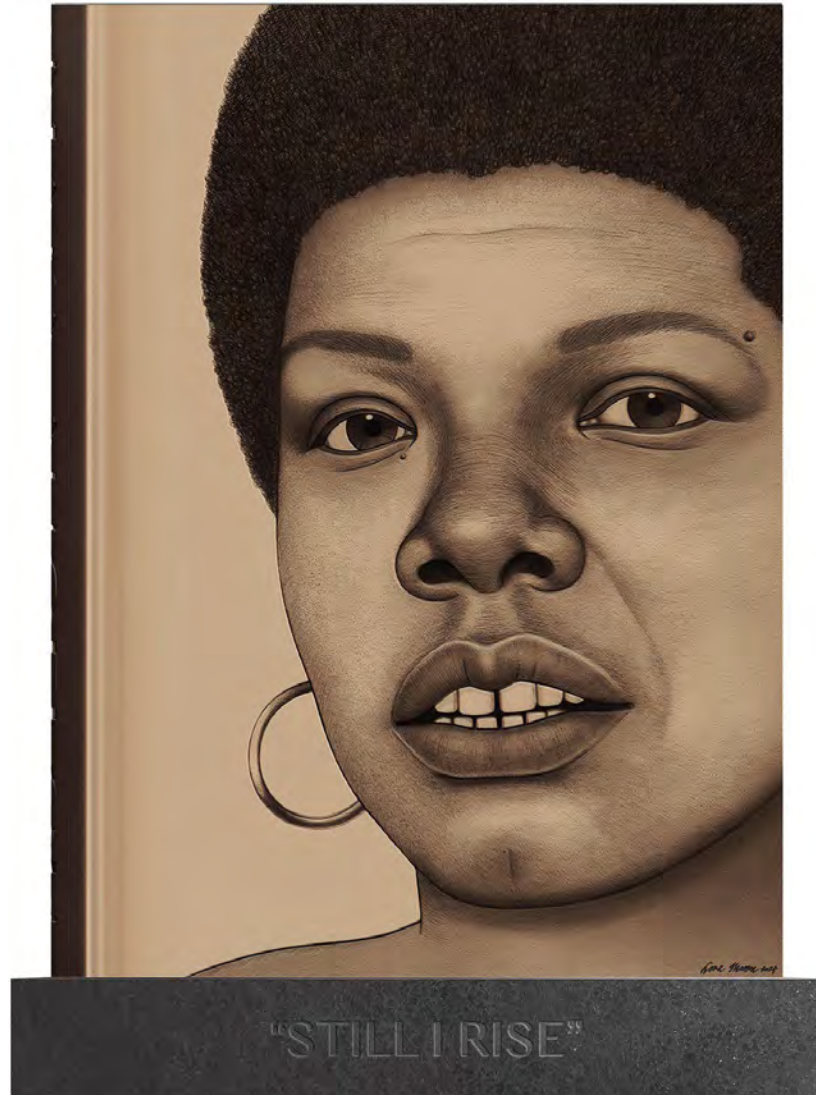
Updated design



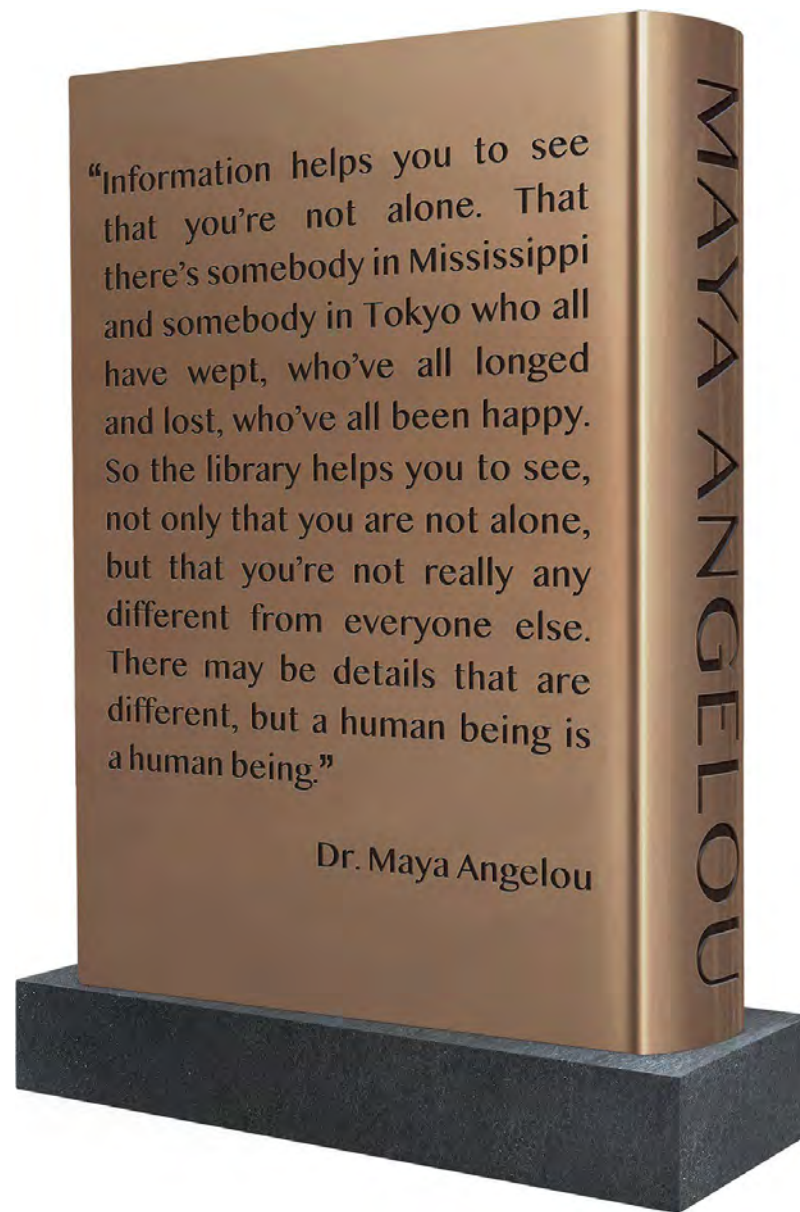
DIMENSIONS



FRONT VIEW



SPINE VIEW





## BACK VIEW

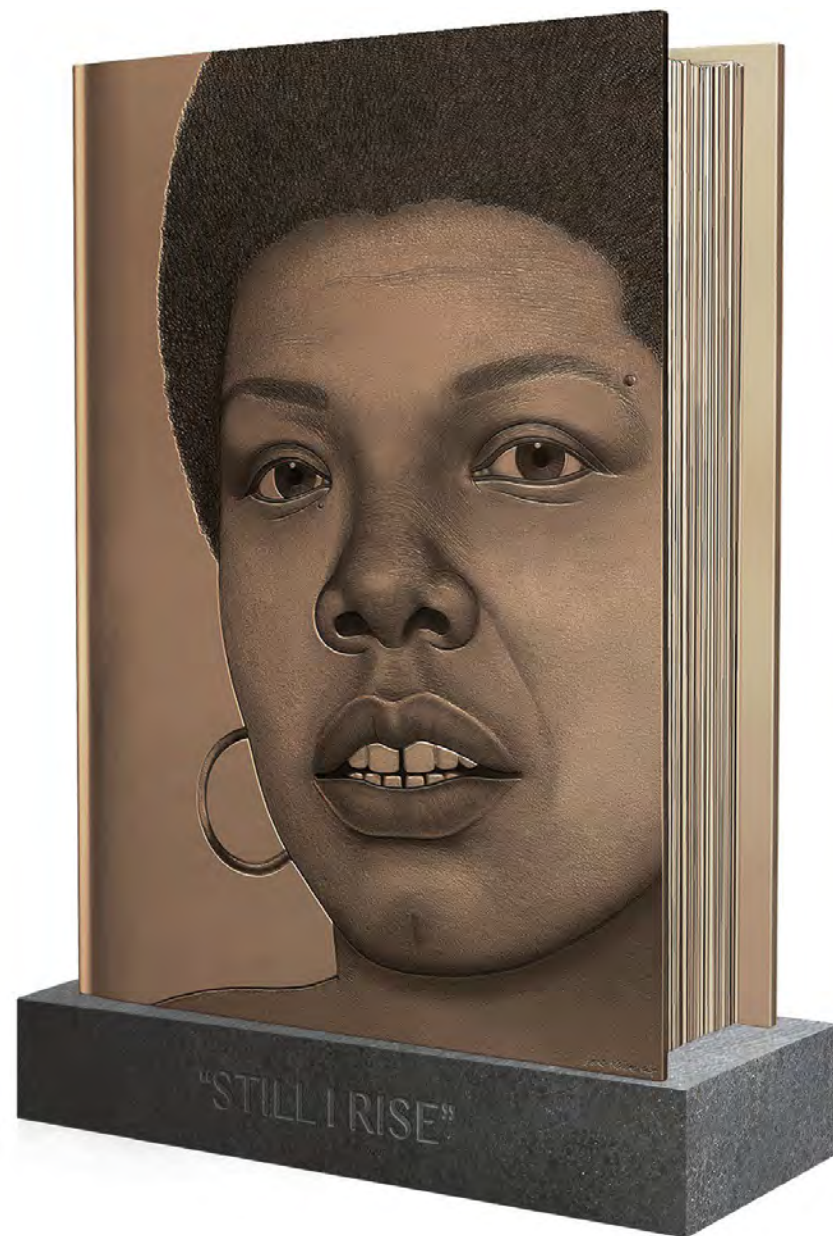
“Information helps you to see that you’re not alone. That there’s somebody in Mississippi and somebody in Tokyo who all have wept, who’ve all longed and lost, who’ve all been happy. So the library helps you to see, not only that you are not alone, but that you’re not really any different from everyone else. There may be details that are different, but a human being is a human being.”

Dr. Maya Angelou

“Information helps you to see that you’re not alone. That there’s somebody in Mississippi and somebody in Tokyo who all have wept, who’ve all longed and lost, who’ve all been happy. So the library helps you to see, not only that you are not alone, but that you’re not really any different from everyone else. There may be details that are different, but a human being is a human being.”

Dr. Maya Angelou

PAGES VIEW



SITE LOCATION

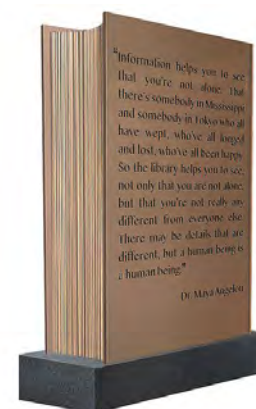
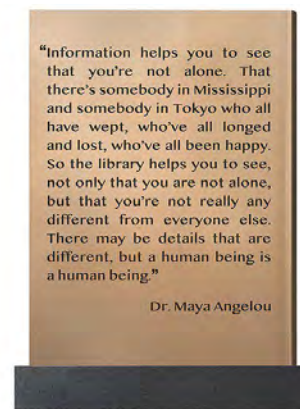
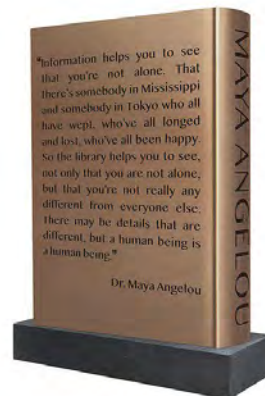


S A N R A

STILL I RISE

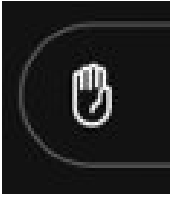
Main Library Hours

# ALL VIEWS



## Public Comment via WebEx:

- Hover over your name in the attendee list and **click** on the hand icon to raise your hand.
- You will be **placed** in the public speaker queue once your hand is **raised**.
- When you are unmuted by the host, **click** “unmute” .
- Then you will see a **request** to be unmute window.
- Click** unmute and you will be **prompted** to **speak**.



## Public Comment via Phone:

- Dial 415-655-0001.
- Enter the Access Code: **2661 384 5786**
- Then **press # twice**.
- Then you will hear, "You are muted."
- In order to be added to the speaker line you must first **raise** your hand to speak.
- To raise your hand, dial \* **3**
- You will be **unmute** when it is your time to speak. **THIS IS YOUR TIME TO SPEAK**
- Once your time has **expired**, your phone line will be muted.

Participants who wish to speak on other public comment periods may stay on the line and listen for the next public comment opportunity. For further inquiries, please contact:

[art-info@sfgov.org](mailto:art-info@sfgov.org).

# Item 5: San Francisco Main Library – Dr. Maya Angelou

---

## *Discussion and Possible Action*

**Discussion of Possible Action:** to approve Design Development Phase deliverables (revised design) and Construction Document Phase deliverables (final mock-ups) by Lava Thomas for the San Francisco Main Library - Dr. Maya Angelou Sculpture Project.

# Item 6: San Francisco International Airport – Harvey Milk Terminal 1 – Atrium Project

---

## *Discussion and Possible Action*

**Discussion and Possible Action:** to approve Design Development Phase deliverables (final design) and Construction Document Phase deliverables (material and mock-ups) by Craig Calderwood for the SFO Harvey Milk Terminal 1 Atrium Project.

**Presenter:** Aleta Lee

**Presentation Time:** Approximately 8 minutes



**SFO HARVEY MILK TERMINAL 1  
THREE-STORY ATRIUM  
PUBLIC ART PROJECT**



# Project Overview

- SFO is currently carrying out a replacement terminal and concourse facility for Terminal 1 (T1).
- From the onset of the remodel, Arts Commission staff have been working closely with the Airport Design Team to integrate several public artworks into the building's design during its multi-phased construction.
- In 2019, the San Francisco Board of Supervisors passed an ordinance naming T1 in honor of San Francisco Supervisor Harvey Milk (1930 – 1978).



its

Domestic Terminals  
Departures Level

Door 11

Door 10

Meeting Point



Door 2

Door 3

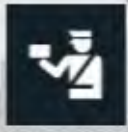
Door 4

Door 6

Under Construction

10

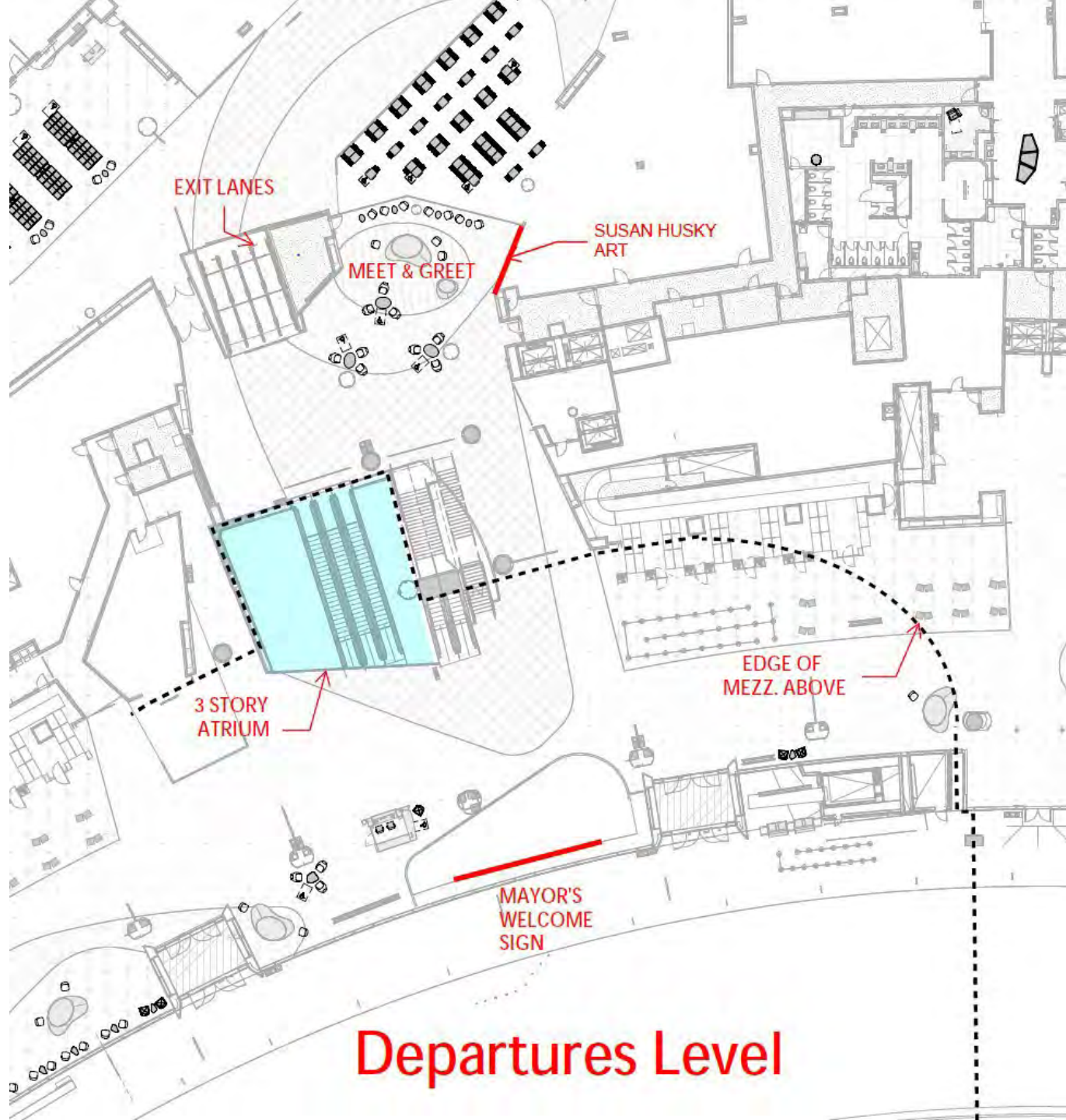
s & Passport Check



B Security Check Point

Terminal 2: Gates C2-C11

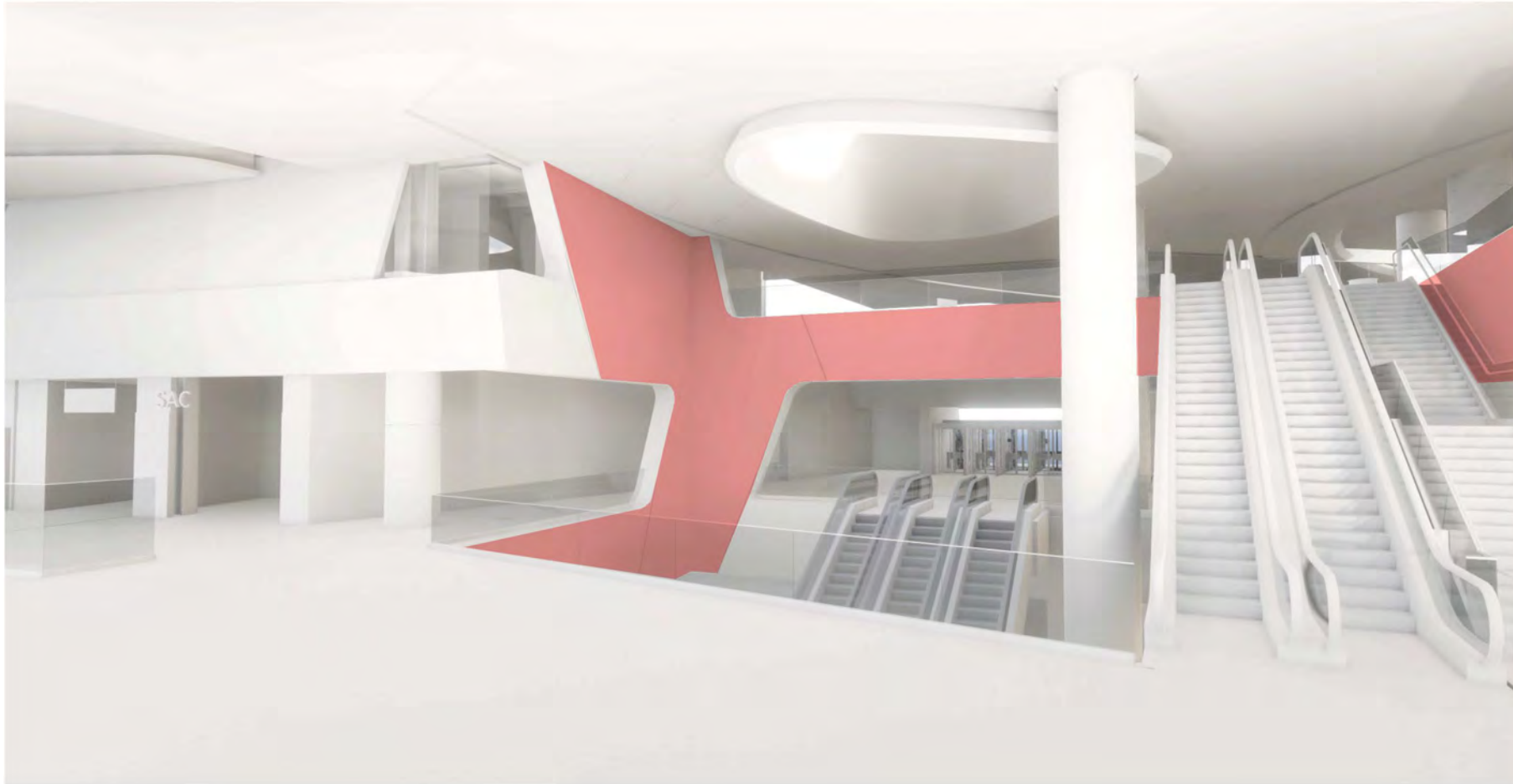
Harvey Milk Terminal 1: Gates  
B2-B27



# Departures Level

# Three Story Wall Re-design - Option C

View 01

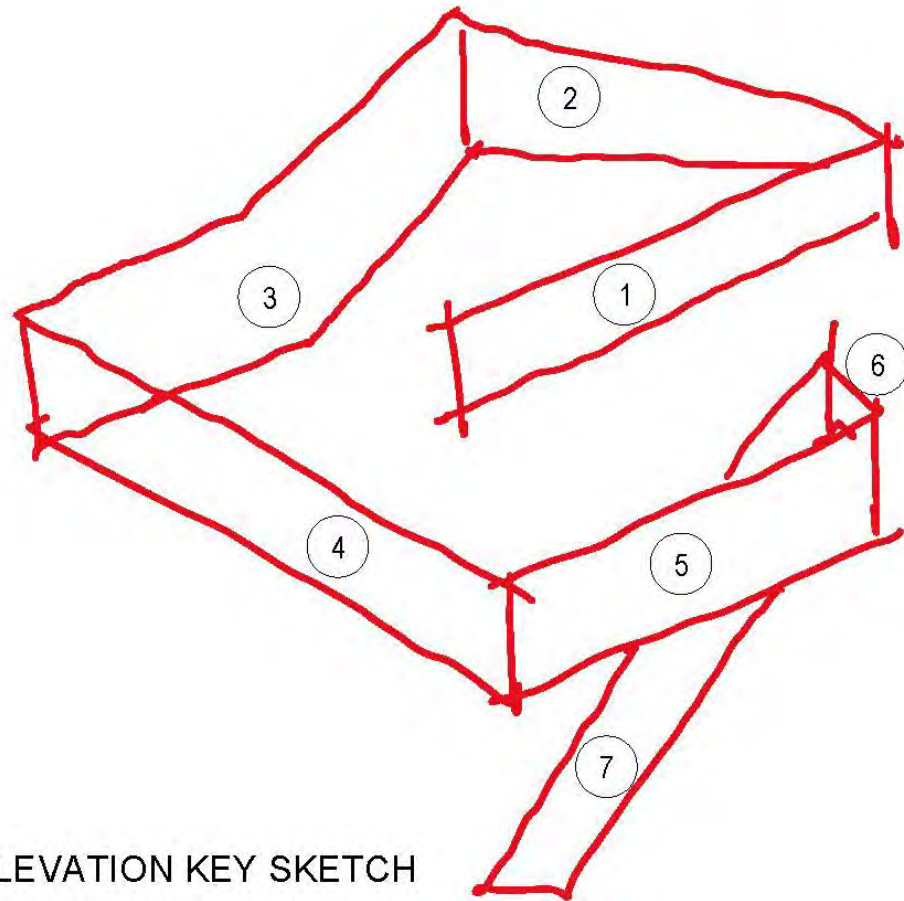


## Three Story Wall Re-design - Option C

View 03 - From Exit Lanes



SFO T1 - 3-STORY ART AREA STUDY  
03 JAN 2020



ELEVATION KEY SKETCH



SFO-T1 Mural, Craig Calderwood

---











# Interpreting

## Harvey Milks

---

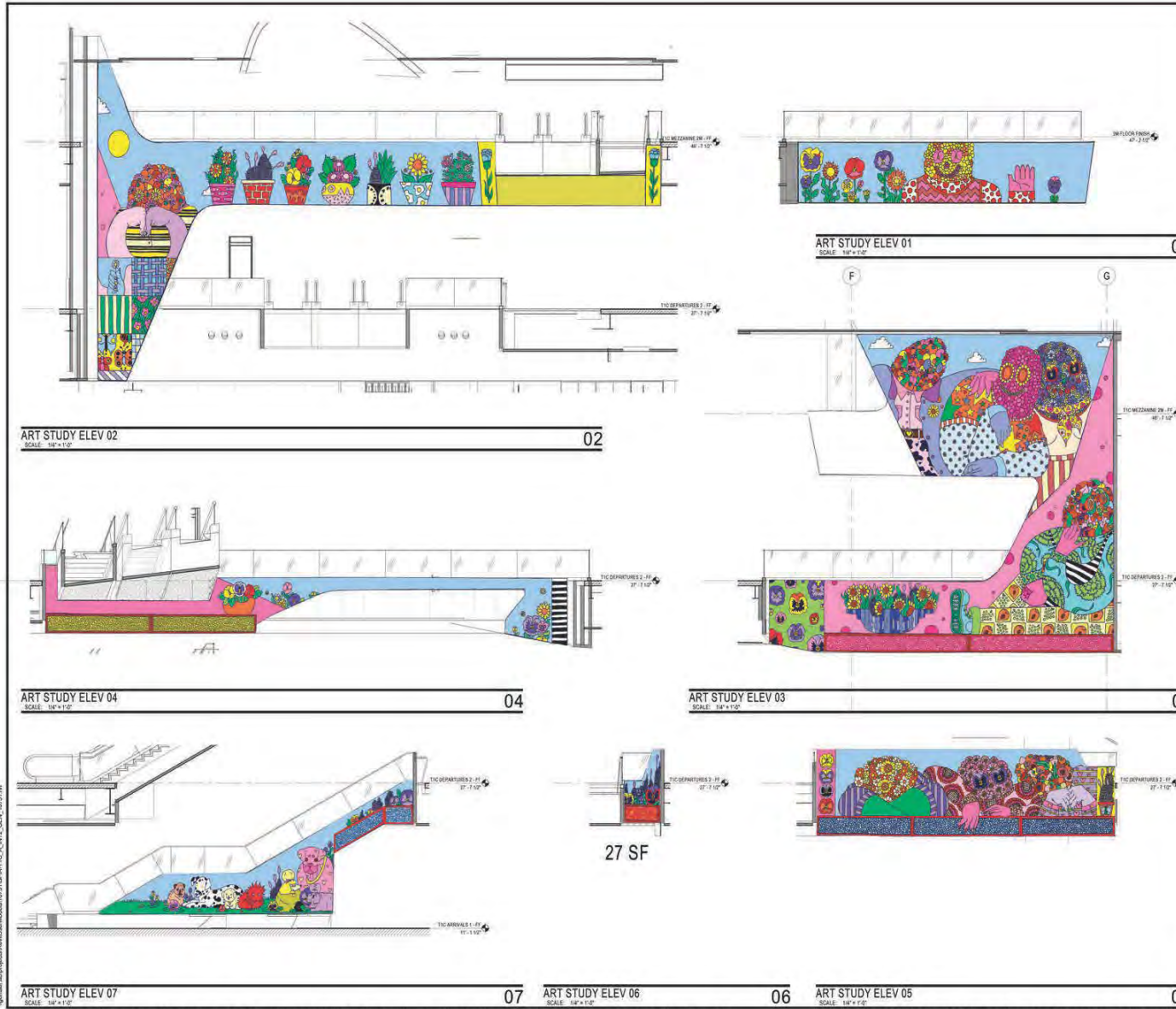
Through research into Harvey Milks Life I distilled his legacy into something simple. Making life for People living in otherness easy, relaxed, and comfortable.

Focusing on the symbols and patterns of Fruits, Flowers and Stripes, which historically have been used to represent deviants, queerness and otherness. I will create figures and environments made of these symbols living peaceful lives.

Other elements of the mural include a Dog Park Scene in reference to the Dog Culture within San Francisco and in Queer family structures, Cathedral glass rectangle seen on my walks around the city and potted plants functioning as gardens for those of us without yards. All pulled together in a Vibrant color palette arranged with geometric shapes and many figures.



# Original Mural Design



SFO

---

**SAN FRANCISCO INTERNATIONAL AIRPORT**  
1100 Convent Road, 2nd Floor  
San Francisco, CA 94133

**HENSEL PHELPS**  
FLEX. BUILD. MANAGER  
228 Airport Parkway, Suite 150, San Jose, CA 95110  
Phone: 408-452-1800  
Fax: 408-452-1855

**Gensler**  
4 Market Street, Suite 400, San Francisco, CA 94105  
415-433-2700

**KATHANIAN**  
725 Greenwch Street, Suite 400, San Francisco, CA 94113  
415-544-8880

**FA**  
525 Brennan Street, Suite 400, San Francisco, CA 94107  
415-974-9039

---

10011.66.T1C

PROJECT TITLE  
TERMINAL 1 CENTER RENOVATION,  
SAN FRANCISCO INTERNATIONAL AIRPORT

SHEET TITLE  
3-STORY ART STUDY  
ELEVATIONS

---

DESIGNER: FROBER REAL

DATE STAMP

**TOTAL AREA AVAILABLE: 2,373 SF**

\*Total area may not reflect area that is realistically available for monitor installation, so there will be refinement as the process moves forward.

ISSUE	DATE	DESCRIPTION

SCALE: 1/4" = 1'-0"      DATE: 12/22/2018

**ASK-200103-1**

© 2017 Gensler

Name: sfo-airport-terminal1-center-renovation-3-story-art-study-elevations-10011.66.t1c\_A\_MKT\_GDR\_142317.rvt

# Final Mural Design

**ART STUDY ELEV 01**  
SCALE: 1/4" = 1'-0"

**ART STUDY ELEV 02**  
SCALE: 1/4" = 1'-0"

**ART STUDY ELEV 03**  
SCALE: 1/4" = 1'-0"

**ART STUDY ELEV 04**  
SCALE: 1/4" = 1'-0"

**ART STUDY ELEV 05**  
SCALE: 1/4" = 1'-0"

**ART STUDY ELEV 06**  
SCALE: 1/4" = 1'-0"

**ART STUDY ELEV 07**  
SCALE: 1/4" = 1'-0"

27 SF

**SFO**  
SAN FRANCISCO INTERNATIONAL AIRPORT  
710 McDonnell Road, 2nd Floor  
San Francisco, CA 94128

**HENSEL PHELPS**  
700 S. Van Ness  
225 Airport Parkway, Suite 150, San Jose, CA 95110  
Phone: 408-452-1900  
Fax: 408-452-1850

**Gensler**  
2 Market Street, Suite 400, San Francisco, CA 94105  
415-433-3700

**KUTHRANIER**  
725 Greenwich Street, Suite 400, San Francisco, CA 94113  
415-544-9980

**J.A.**  
525 Brannan Street, Suite 400, San Francisco, CA 94107  
415-674-5030

10011.66.T1C  
TERMINAL 1 CENTER RENOVATION -  
SAN FRANCISCO INTERNATIONAL AIRPORT

3-STORY ART STUDY  
ELEVATIONS

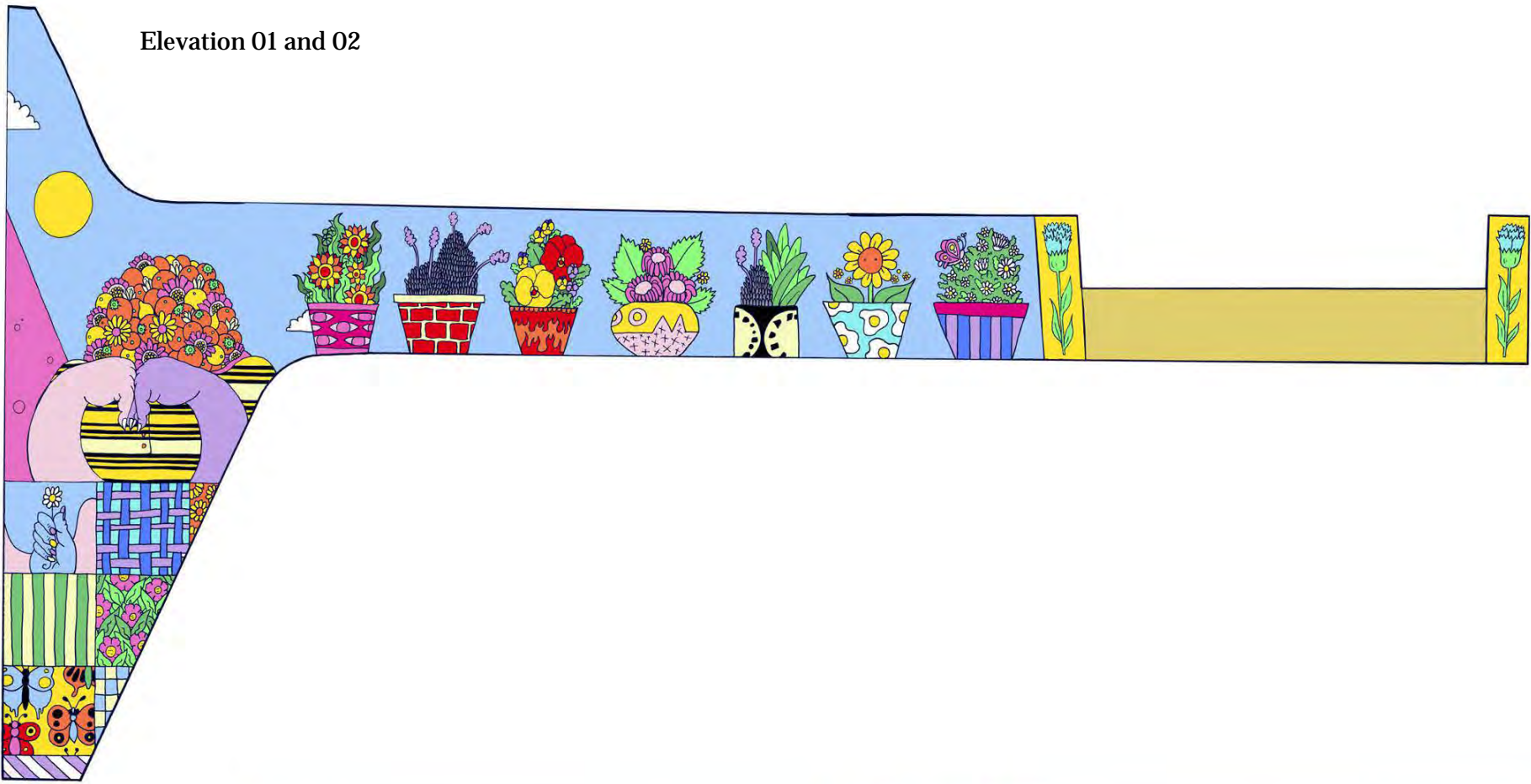
TOTAL AREA AVAILABLE: 2,373 SF  
\*Total area may not reflect area that is realistically available for monitor installation, so there will be refinement as the process moves forward.

ISSUE	DATE	DESCRIPTION
SCALE	1/4" = 1'-0"	DATE
DATE	10/22/2019	

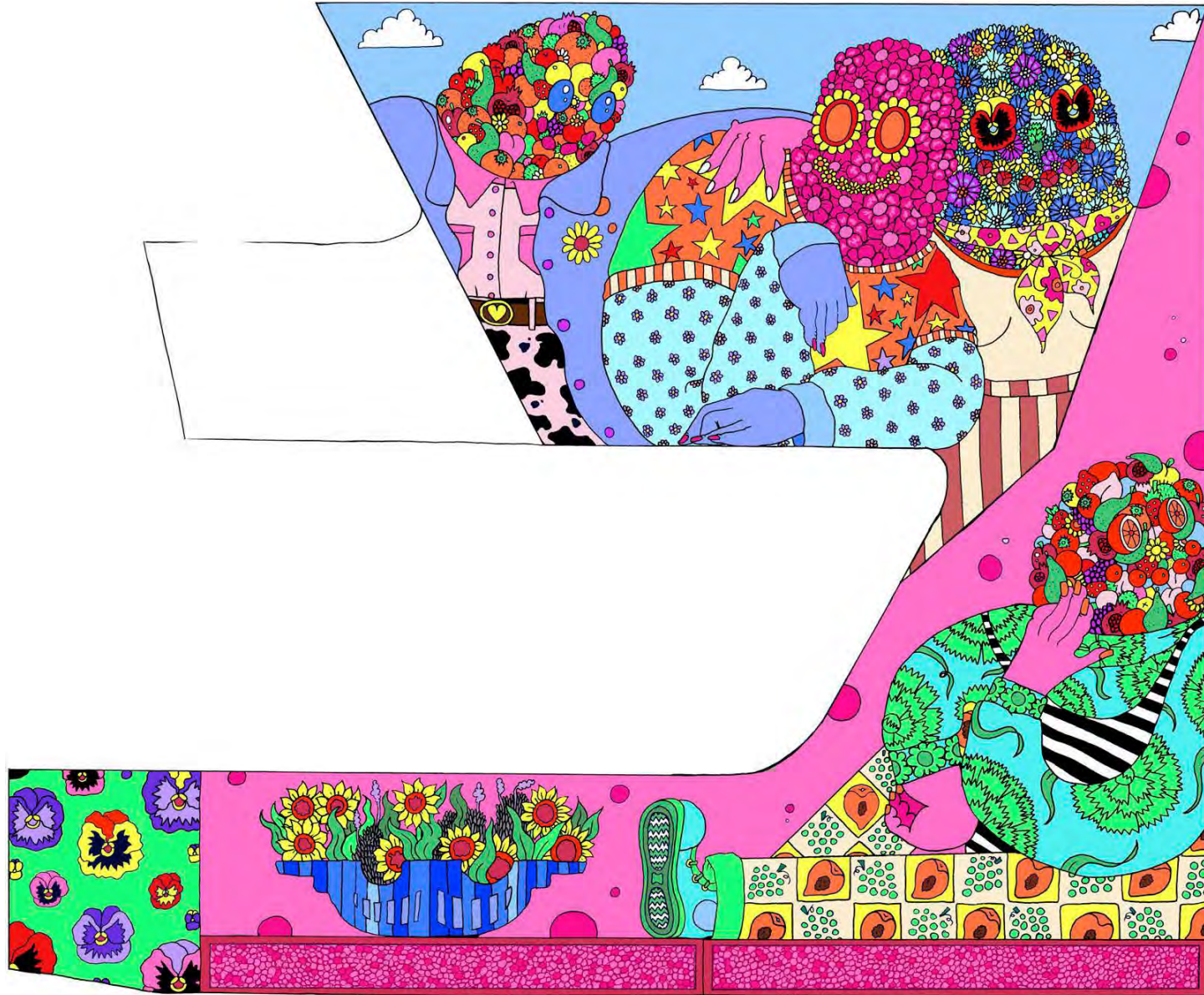
**ASK-200103-1**  
© 2017 Gensler

Gensler | 408 Airport Parkway, Suite 150, San Jose, CA 95110 | TEL: 408.452.1900 | FAX: 408.452.1850

Elevation 01 and 02

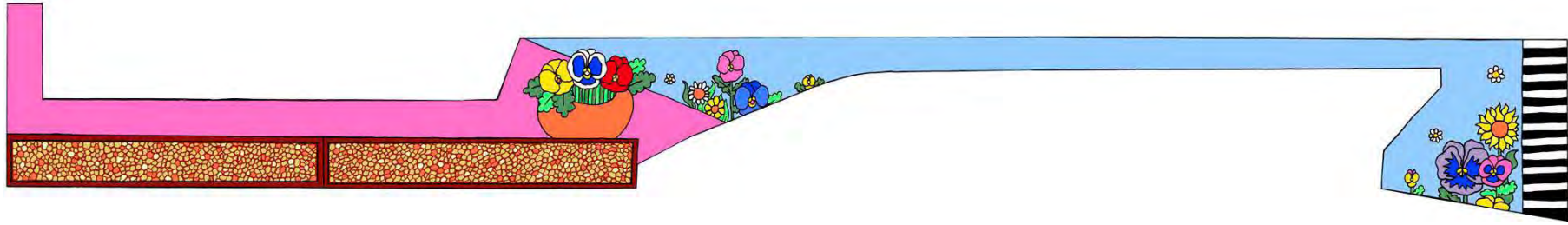


Elevation 03

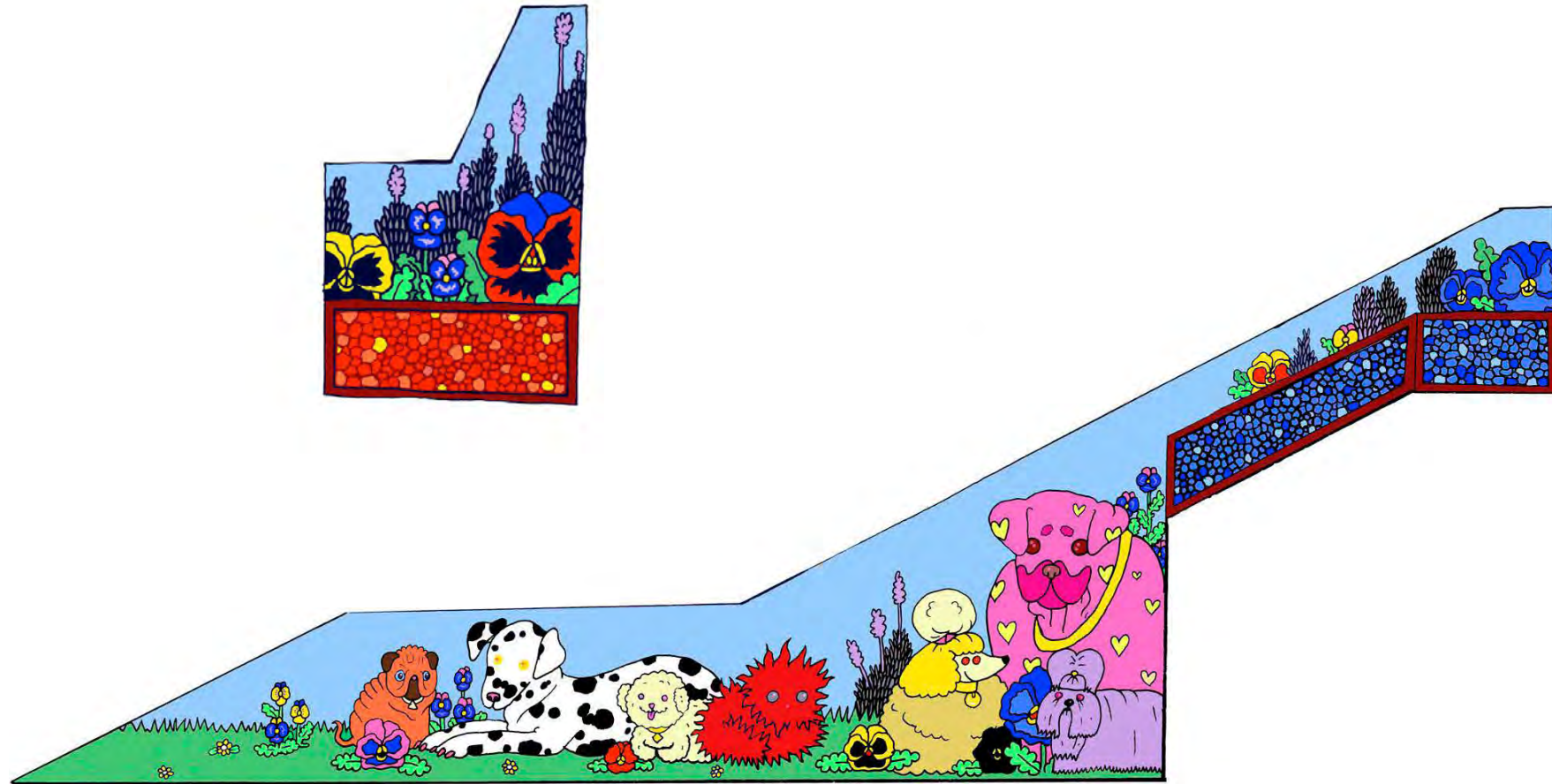




Elevation 04 and 05



Elevation 06 and 07



# Adjustments Made to Original

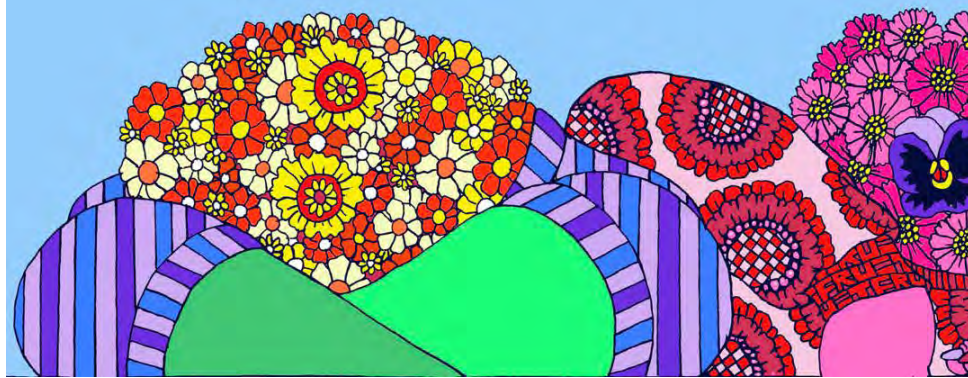
---

-Changes to Original Design  
Mostly exist in the adjusting and refinement of the color Palette.

-The Amount of colors used has been reduced, brightening the image and allowing for more efficient application and easier after care for SFO museum team.

-Color Palette has been standardized into Pantone and Nova Colors.

-Adjustments have been made to figures and environments most notably in the saturation of color, Creating a richer bolder image that will read more clearly at a distance.



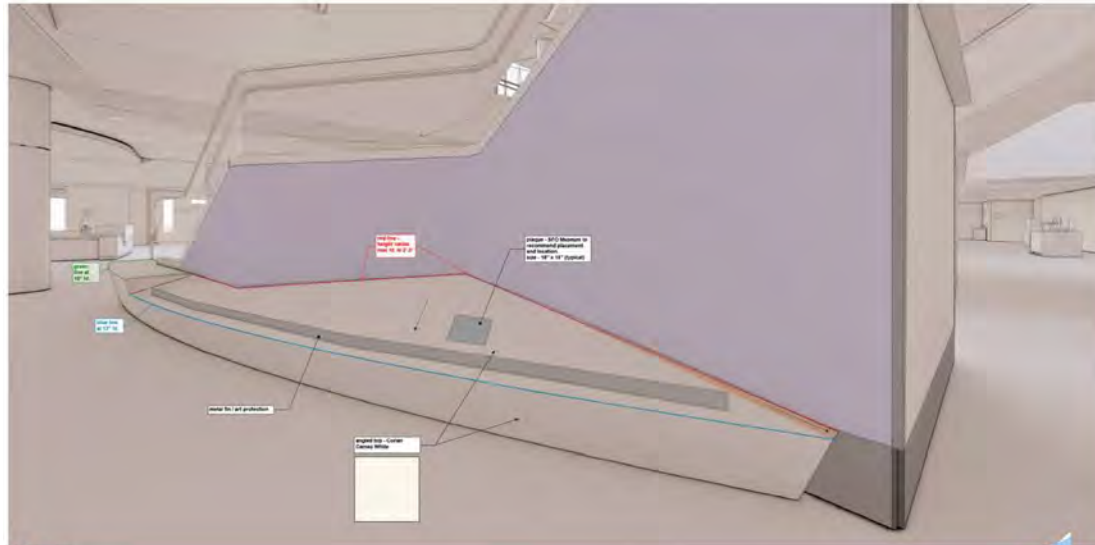
# Adjustment to Elevation 07

-Elevation 07 is one of the few walls accessible to people. Over a handful of meetings with the SFO team, SFO Museum, Myself and the Arts Commission we have agreed upon creating a triangular slope as to deter touching. This does change the shape of the wall and the design has been adjusted for the changes, but it does not compromise the original vision for the mural.

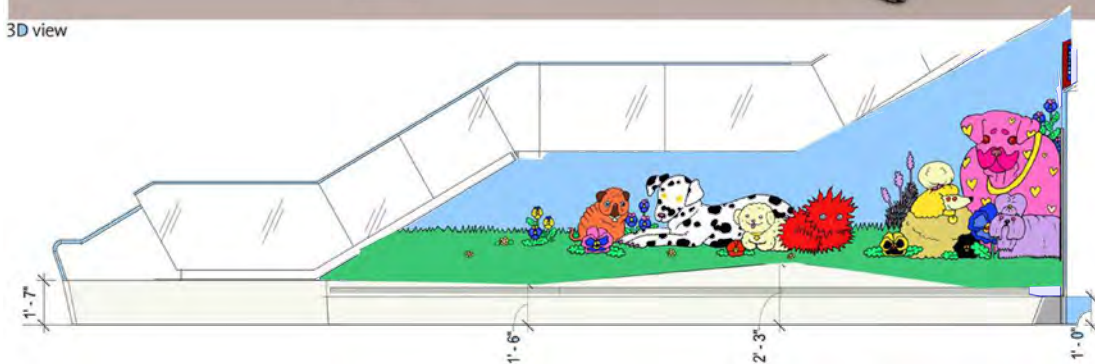
San Francisco International Airport Terminal 1

## Arrivals Plinth Mural Protection

3D view and elevation



3D view



elevation

# Color

-Color Palette has been standardized into Pantone colors and Precita Eyes in house mixed colors from Nova Colors.

-Pantone Color Paints will be custom mixed by Subcontractor Precita Eyes. All formulas for paints will be made available to SFO museum team for maintenance and conservation.

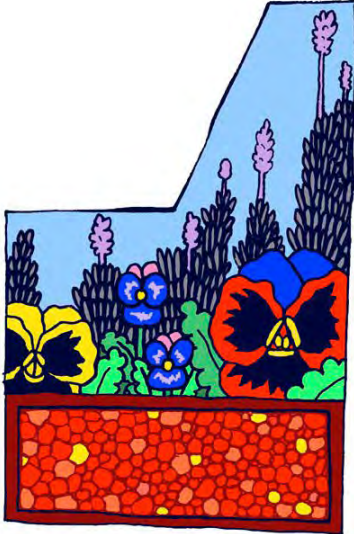


Precita Eyes Colors Plus Pantone Colors, Final palette, Square Footage of each color underneath swatch.

Pantone 291 C 688ft	Ice Blue 60ft	Blue Moon 45ft	Miles Blue 86ft
Rose Red 38ft	Lava Red 38ft	Ocelot Orange 30ft	Saxon 82ft
Pantone 459 C 84ft	Pantone 7401 C 89ft	Tzcheng Yellow 138ft	
Pantone 2264 C 16ft	Pantone 2269 C 76ft	Pantone 2288 C 105ft	Pantone 3245 C 43ft
Wonka Pink 40ft	Pantone 219 C 50ft	Powder Pink 307ft	Pantone 2043 C 60ft
	Pantone 264 C 86ft		
Carbon Black 150ft	Pantone 430 C 29ft	Titanium White 30ft	

To Scale Rendering- 3' x 3' of Elevation 06

---



## Public Comment via WebEx:

- Hover over your name in the attendee list and **click** on the hand icon to raise your hand.
- You will be **placed** in the public speaker queue once your hand is **raised**.
- When you are unmuted by the host, **click** “unmute” .
- Then you will see a **request** to be unmute window.
- Click** unmute and you will be **prompted** to **speak**.



## Public Comment via Phone:

- Dial 415-655-0001.
- Enter the Access Code: **2661 384 5786**
- Then **press # twice**.
- Then you will hear, "You are muted."
- In order to be added to the speaker line you must first **raise** your hand to speak.
- To raise your hand, dial \* **3**
- You will be **unmute** when it is your time to speak. **THIS IS YOUR TIME TO SPEAK**
- Once your time has **expired**, your phone line will be muted.

Participants who wish to speak on other public comment periods may stay on the line and listen for the next public comment opportunity. For further inquiries, please contact:

[art-info@sfgov.org](mailto:art-info@sfgov.org).

# Item 6: San Francisco International Airport – Harvey Milk Terminal 1 – Atrium Project

---

## *Discussion and Possible Action*

**Discussion and Possible Action:** to approve Design Development Phase deliverables (final design) and Construction Document Phase deliverables (material and mock-ups) by Craig Calderwood for the SFO Harvey Milk Terminal 1 Atrium Project.



# Item 7: Staff Report

---

## *Discussion*

Staff Presenter: Mary Chou

Presentation Time: Approximately 5 minutes

## Public Comment via WebEx:

- Hover over your name in the attendee list and **click** on the hand icon to raise your hand.
- You will be **placed** in the public speaker queue once your hand is **raised**.
- When you are unmuted by the host, **click** “unmute” .
- Then you will see a **request** to be unmute window.
- **Click** unmute and you will be **prompted** to **speak**.



## Public Comment via Phone:

- Dial 415-655-0001.
- Enter the Access Code: **2661 384 5786**
- Then **press # twice**.
- Then you will hear, "**You are muted.**"
- In order to be added to the speaker line you must first **raise** your hand to speak.
- To raise your hand, dial \* **3**
- You will be **unmute** when it is your time to speak. **THIS IS YOUR TIME TO SPEAK**
- Once your time has **expired**, your phone line will be **muted**.

Participants who wish to speak on other public comment periods may stay on the line and listen for the next public comment opportunity. For further inquiries, please contact:

[art-info@sfgov.org](mailto:art-info@sfgov.org).

# **Item 8: New Business and Announcements**

---

## *Discussion*

*(This item is to allow Commissioners to introduce new agenda items for consideration.)*

## Public Comment via WebEx:

- Hover over your name in the attendee list and **click** on the hand icon to raise your hand.
- You will be **placed** in the public speaker queue once your hand is **raised**.
- When you are unmuted by the host, **click** “unmute” .
- Then you will see a **request** to be unmute window.
- **Click** unmute and you will be **prompted** to **speak**.



## Public Comment via Phone:

- Dial 415-655-0001.
- Enter the Access Code: **2661 384 5786**
- Then **press # twice**.
- Then you will hear, "You are muted."
- In order to be added to the speaker line you must first **raise** your hand to speak.
- To raise your hand, dial \* **3**
- You will be **unmute** when it is your time to speak. **THIS IS YOUR TIME TO SPEAK**
- Once your time has **expired**, your phone line will be muted.

Participants who wish to speak on other public comment periods may stay on the line and listen for the next public comment opportunity. For further inquiries, please contact:

[art-info@sfgov.org](mailto:art-info@sfgov.org).

## **Item 9: Adjournment**

---

# Thank You!

## Stay Connected



[www.sfartscommission.org](http://www.sfartscommission.org) | [ART-info@sfgov.org](mailto:ART-info@sfgov.org)

