

# WORKFORCE DIRECTOR'S REPORT

**Joshua Arce, Director of Workforce Development**  
Office of Economic and Workforce Development

Prepared for Workforce Investment San Francisco (WISF)  
Executive Committee Meeting



**August 18, 2023**

# ECONOMIC INDICATORS – UNEMPLOYMENT RATE

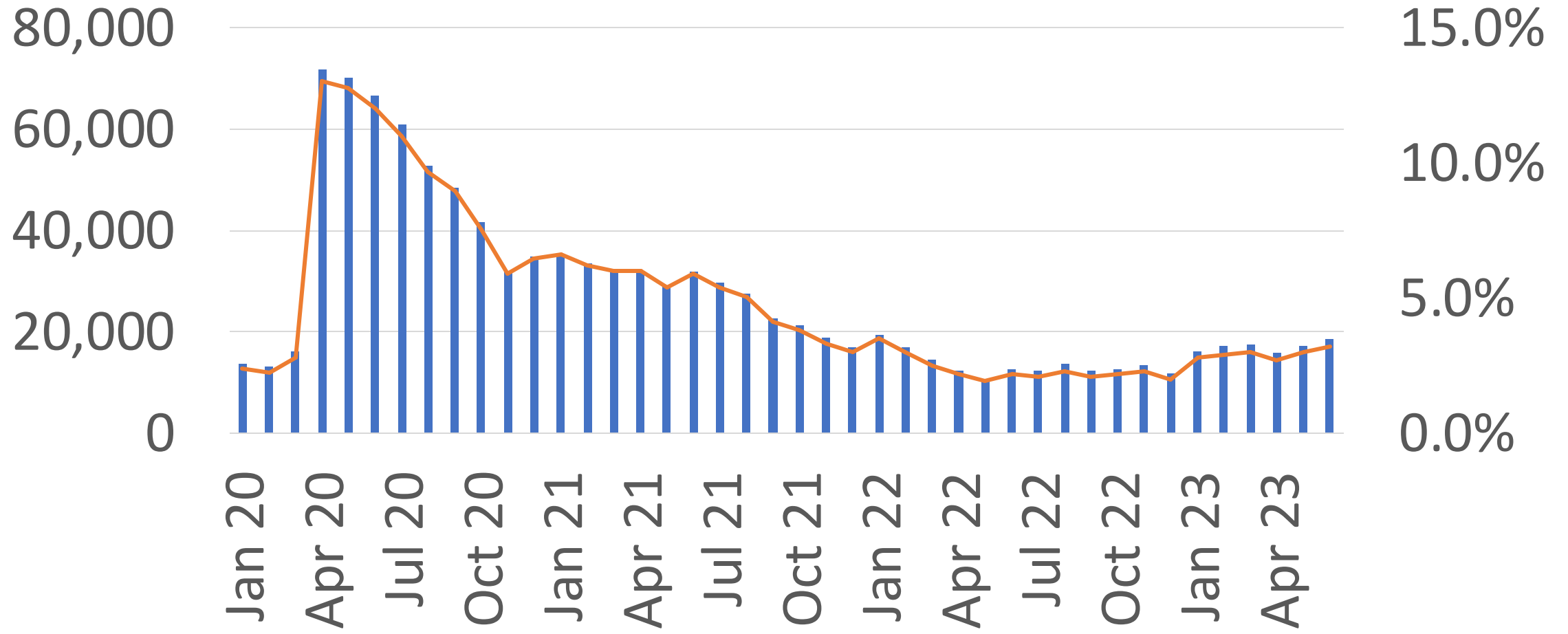
SF Unadjusted Unemployment Rate		
SF County	Unemployment	Rate
Jun 2022	12,600	2.2%
Jul 2022	12,300	2.1%
Aug 2022	13,600	2.3%
Sep 2022	12,300	2.1%
Oct 2022	12,500	2.2%
Nov 2022	13,300	2.3%
Dec 2022	11,700	2.0%
Jan 2023	16,200	2.8%
Feb 2023	17,100	2.9%
Mar 2023	17,400	3.0%
Apr 2023	15,700	2.7%
May 2023*	17,200	3.0%
<b>Jun 2023*</b>	<b>18,600</b>	<b>3.2%</b>

Source: California EDD, US Bureau of Labor Statistics

\* Preliminary Data



# ECONOMIC INDICATORS – UNEMPLOYMENT RATE



■ Unemployment    — Unemployment Rate

# ECONOMIC INDICATORS – CHANGE IN EMPLOYMENT

One-Month Change in Area Employment by Industry SF Metro District (SF + San Mateo Counties)				
Industry	May 2023	Jun 2023*	Change Since May 2023	% Change Since May 2023
Mining, Logging, and Construction	40,100	40,400	300	0.7%
Manufacturing	39,000	39,300	300	0.8%
Trade, Transportation, and Utilities	134,900	135,600	700	0.5%
Information	124,400	126,600	2,200	1.8%
Financial Activities	89,600	89,000	(600)	-0.7%
Professional & Business Services	316,100	319,900	3,800	1.2%
Private Education & Health Services	163,300	163,100	(200)	-0.1%
Leisure & Hospitality	128,800	130,500	1,700	1.3%
Other Services	38,200	39,000	800	2.1%
Government	139,700	139,000	(700)	-0.5%
Farm	1,800	1,900	100	5.6%
<b>Total</b>	<b>1,212,300</b>	<b>1,224,300</b>	<b>12,000</b>	<b>1.0%</b>

Source: California EDD, US Bureau of Labor Statistics

\* Preliminary

# COMMUNITY HIGHLIGHTS



We had the privilege last week of celebrating graduates from our [#HealthCareAcademy](#) who are making an immediate impact in San Francisco communities. These grads have already accomplished so much, overcoming obstacles while excelling and embodying the agencies where they trained.



Self-Help for the Elderly 安老自助處 and 9 others



SFOEWD @sfoewd · 1h

We heard so many stories: Damien who was working 2 jobs before becoming a Medical Assistant, Darla who's a Community Health Worker after completing her apprenticeship with the Homeless Prenatal Program, Kamchi who now works as a CNA and applies her skills to care for the elderly.



# COMMUNITY HIGHLIGHTS

SFOEWD reposted



**London Breed** @LondonBreed · Aug 14

This past week, @SFPD, @sfoewd, & community partners provided job application support for residents who want to become police officers. This is just one of a number of our strategies to fill police staffing shortages so we can add more officers out on our streets.



SFOEWD reposted



**Leo Sosa** @leonardoysosa · Aug 12

Thanks to our wonderful speakers who addressed our @devmissionorg Pre Apprenticeship Summer 2023 Cohort 20 and 21 Last Night: @sfoewd @JoaquinTorresSF @JoshArceSF @sfbaygoodwill William Rogers & @OfficialCCSF Gregoria Cahill



# COMMUNITY HIGHLIGHTS



Joshua Arce is with Chad Houston and 23 others.

August 8 at 12:54 PM · 🌐

Exciting News! See you on August 23, [IKEA](#), and thanks for hiring from the community! 🙌🙌 #economicrecovery

"About 90% of the new workers live in the city, the majority from "around the corner," Alkalin said, defining that as the Tenderloin, Mid-Market and SOMA areas. Some were hired through the [San Francisco Office of Economic and Workforce Development \(OEWD\)](#). "They could be individuals who had certain things in their past and are now going through some rehabilitation programs," he said.



SFCHRONICLE.COM

Downtown San Francisco's IKEA has an opening date. Will the store spur a rebound?



# DISCUSSION

**Joshua Arce, Director of Workforce Development**  
Office of Economic and Workforce Development

Prepared for Workforce Investment San Francisco (WISF)  
Executive Committee Meeting

