

WORKFORCE DIRECTOR'S REPORT

Joshua Arce, Director of Workforce Development
Office of Economic and Workforce Development

Prepared for Workforce Investment San Francisco (WISF)
Full Board Meeting



February 28, 2023

ECONOMIC INDICATORS – UNEMPLOYMENT RATE

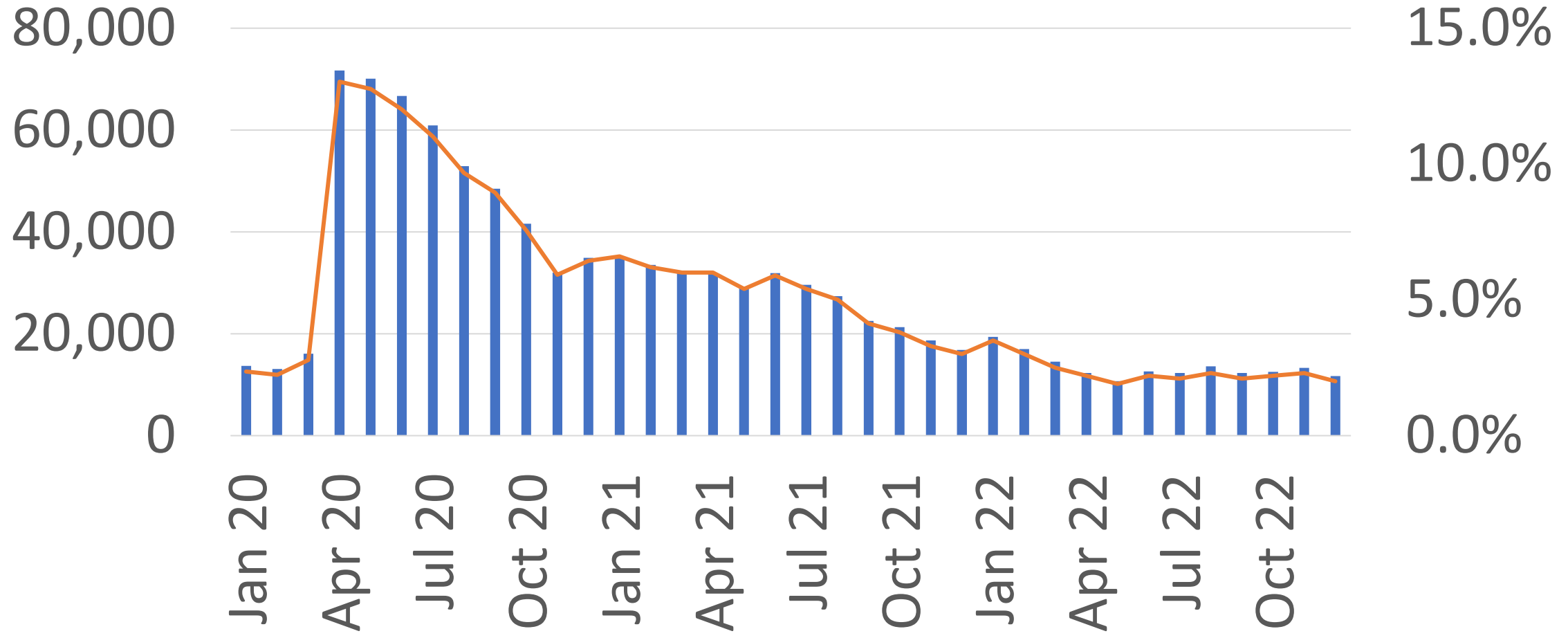
SF Unadjusted Unemployment Rate		
SF County	Unemployment	Rate
Dec 2021	16,800	3.0%
Jan 2022	19,400	3.5%
Feb 2022	17,000	3.0%
Mar 2022	14,500	2.5%
Apr 2022	12,300	2.2%
May 2022	10,700	1.9%
Jun 2022	12,600	2.2%
Jul 2022	12,300	2.1%
Aug 2022	13,600	2.3%
Sep 2022	12,300	2.1%
Oct 2022	12,500	2.2%
Nov 2022	13,300	2.3%
Dec 2022*	11,700	2.0%

Source: California EDD, US Bureau of Labor Statistics

* Preliminary Data



ECONOMIC INDICATORS – UNEMPLOYMENT RATE



■ Unemployment — Unemployment Rate

ECONOMIC INDICATORS – CHANGE IN EMPLOYMENT

Change in Area Employment Since December 2019 by Industry SF Metro District (SF + San Mateo Counties)				
Industry	Dec 2019	Dec 2022*	Change Since Dec 2019	% Change Since Dec 2019
Mining, Logging, and Construction	43,100	45,700	2,600	6.0%
Construction	43,000	45,500	2,500	5.8%
Manufacturing	39,100	38,700	(400)	-1.0%
Trade, Transportation, and Utilities	159,000	145,300	(13,700)	-8.6%
Retail Trade	80,800	71,900	(8,900)	-11.0%
Transportation & Warehousing	47,300	45,600	(1,700)	-3.6%
Information	100,700	120,500	19,800	19.7%
Financial Activities	87,400	87,300	(100)	-0.1%
Finance & Insurance	63,600	65,900	2,300	3.6%
Professional & Business Services	297,900	320,700	22,800	7.7%
Computer Systems Design & Related Services	85,600	95,100	9,500	11.1%
Administrative & Support Services	57,400	56,100	(1,300)	-2.3%
Educational & Health Services	149,000	154,400	5,400	3.6%
Educational Services	33,200	32,400	(800)	-2.4%
Health Care & Social Assistance	115,800	122,000	6,200	5.4%
Leisure & Hospitality	150,200	119,800	(30,400)	-20.2%
Arts, Entertainment & Recreation	21,000	19,100	(1,900)	-9.0%
Accommodation	26,600	17,500	(9,100)	-34.2%
Restaurants	83,100	72,000	(11,100)	-13.4%
Other Services	41,700	40,700	(1,000)	-2.4%
Personal & Laundry Services	15,300	13,100	(2,200)	-14.4%
Religious, Grants, Civic, Professional	20,600	21,500	900	4.4%
Government	132,700	131,400	(1,300)	-1.0%
Farm	1,600	1,700	100	6.3%
Total	1,202,400	1,206,200	3,800	0.3%

Source: California EDD, US Bureau of Labor Statistics

* Preliminary



ECONOMIC INDICATORS – CHANGE IN EMPLOYMENT

Change in Area Employment Since December 2019 by Industry SF Metro District (SF + San Mateo Counties)				
Industry	Dec 2019	Dec 2022*	Change Since Dec 2019	% Change Since Dec 2019
Mining, Logging, and Construction	43,100	45,700	2,600	6.0%
Manufacturing	39,100	38,700	(400)	-1.0%
Trade, Transportation, and Utilities	159,000	145,300	(13,700)	-8.6%
Information	100,700	120,500	19,800	19.7%
Financial Activities	87,400	87,300	(100)	-0.1%
Professional & Business Services	297,900	320,700	22,800	7.7%
Educational & Health Services	149,000	154,400	5,400	3.6%
Leisure & Hospitality	150,200	119,800	(30,400)	-20.2%
Other Services	41,700	40,700	(1,000)	-2.4%
Government	132,700	131,400	(1,300)	-1.0%
Farm	1,600	1,700	100	6.3%
Total	1,202,400	1,206,200	3,800	0.3%

Source: California EDD, US Bureau of Labor Statistics

* Preliminary

ECONOMIC INDICATORS – TWO-MONTH CHANGE

Two-Month Change in Area Employment by Industry SF Metro District (SF + San Mateo Counties)				
Industry	Oct 2022	Dec 2022	Change Since Oct 2022	% Change Since Oct 2022
Mining, Logging, and Construction	45,500	45,700	200	0.4%
Construction	45,300	45,500	200	0.4%
Manufacturing	38,700	38,700	-	0.0%
Trade, Transportation, and Utilities	142,500	145,300	2,800	2.0%
Retail Trade	70,100	71,900	1,800	2.6%
Transportation & Warehousing	44,500	45,600	1,100	2.5%
Information	121,100	120,500	(600)	-0.5%
Financial Activities	86,200	87,300	1,100	1.3%
Finance & Insurance	65,200	65,900	700	1.1%
Professional & Business Services	320,100	320,700	600	0.2%
Computer Systems Design & Related Services	95,400	95,100	(300)	-0.3%
Administrative & Support Services	57,400	56,100	(1,300)	-2.3%
Educational & Health Services	151,700	154,400	2,700	1.8%
Educational Services	32,600	32,400	(200)	-0.6%
Health Care & Social Assistance	119,100	122,000	2,900	2.4%
Leisure & Hospitality	119,700	119,800	100	0.1%
Arts, Entertainment & Recreation	18,700	19,100	400	2.1%
Accommodation	17,700	17,500	(200)	-1.1%
Restaurants	71,600	72,000	400	0.6%
Other Services	39,700	40,700	1,000	2.5%
Personal & Laundry Services	12,900	13,100	200	1.6%
Religious, Grants, Civic, Professional	21,000	21,500	500	2.4%
Government	131,000	131,400	400	0.3%
Farm	1,700	1,700	-	0.0%
Total	1,197,900	1,206,200	8,300	0.7%

Source: California EDD, US Bureau of Labor Statistics

* Preliminary



PROPOSAL - COMMUNITY AND ECONOMIC RESILIENCY THROUGH THE CARE ECONOMY

Ms. Nancy Farias
Director
Employment Development Department
800 Capitol Mall
Sacramento, CA 95814

RE: Bay Area Workforce Development Board support for the Bay Area Good Jobs Partnership for Equity (BAGJE) Community Economic Resilience Fund Pilot Project proposal

Dear Director Farias:

The Bay Area Good Jobs Partnership for Equity (BAGJE) is an association of workforce development boards (WDBs) in the nine-county Bay Area region, and it includes Alameda County WDB, Sonoma WDB, WDBCC, NOVArworks, Oakland WDB, Richmond WDB, Contra Costa WDB of Solano County, work2future, SFOEWD, and Workforce Alliance of the North Bay (Marin and Sonoma). Formed in 2021, BAGJE aims to align each sub-region's economic workforce development sector strategy in service of workers and economically vulnerable populations and better coordinate workforce development services and partnerships. BAGJE holds industry relationships with employers, labor, business associations, and training organizations across the region's main economic sectors.

The Bay Area WDBs and BAGJE partners are committed to convening, facilitating leading this project to better collaborate with regional workforce stakeholders, as it is imperative that we strengthen healthcare employer connections with employers, local education community-based training organizations, labor, and local workforce development boards industry capacity in the Bay Area.

The Bay Area is home to one of the most robust economies in the world. However, our largest employers need to look outside of the region to find talent for the healthcare job shortage of 60,000 workers over the next five years. Our proposal will meet these talent shortage need by convening regional industry tables, developing a report and strategy to alleviate supply and demand gaps, participating in these discussions, mapping the landscape of the Bay Area, and establishing a supportive services fund for potential and incoming training and continuing education supports.

As the Bay Area WDBs which create Local and Regional Workforce Development Board (WDB) Plans in conformance with the State Opportunity Act (WIOA) Plans in conformance with the State Opportunity Act and approved by the California Workforce Development Board, this proposal is in alignment with the State Unifield Regional Planning Unit WIOA Plan, the North Bay Regional Planning Unit WIOA Plan, and the Bay-Peninsula Regional Planning Unit WIOA Plan, of our respective areas.



Berkeley City College
Cabrillo College
Coliada College
Chabot College
City College of San Francisco
College of Alameda
College of Marin
College of San Mateo
Contra Costa College
De Anza College
Diablo Valley College
Evergreen Valley College
Foothill College
Gavilan College
Hartnell College
Laney College
Los Positas College
Los Medanos College
Merritt College
Mission College
Monterey Peninsula College
Napa Valley College
Oakland College
San Jose City College
Santa Rosa Junior College



February 10, 2023

Ms. Nancy Farias
Director
Employment Development Department
800 Capitol Mall
Sacramento, CA 95814

RE: Bay Area Council's support for the Bay Area Good Jobs Partnership for Equity (BAGJE) Community Economic Resilience Fund Pilot Project proposal

Dear Director Farias:

The Bay Area Council is composed of regional business leaders working to ensure that the Bay Area is the most innovative, sustainable, inclusive and globally competitive in the world. The Council's membership includes over 320 companies, representing the largest employers in the Bay Area region in the public and private sectors as well as top Universities. Through public policy and advocacy, we focus on solving the most critical challenges and opportunities confronting our region. To support our work to identify the most critical challenges and opportunities confronting our region, we work to identify the most critical challenges and opportunities confronting our region.

February 10, 2023

Ms. Nancy Farias
Director, Employment Development Department
800 Capitol Mall
Sacramento, CA 95814

Dear Director Farias:

On behalf of the Bay Area Community College Consortium (BACC) we are writing to offer our support for the Bay Area Good Jobs Partnership for Equity (BAGJE) proposal to the Community Economic Resilience Fund Pilot Project. BACC is comprised of the 28 community colleges surrounding the Bay Area and serves as a framework to facilitate regional and subregional collaboration ensuring development resources that result in livable wage careers with advancement opportunities for our students.

BAGJE's proposal advances that mission and the work of BACC. Our 28 member colleges, including City College of San Francisco, have long partnered with the workforce development system, employers, and numerous other stakeholders to advance workforce development efforts that lead to career pathways with upward mobility.

The BAGJE proposal creates regional and subregional tables that convene hospitals and community clinics, industry associations, workforce boards, economic development agencies, labor, community members, and educational partners to address severe healthcare worker shortages and health inequities across the Bay Area region. BACC brings to the table already well identified demand gaps and the hurdles that need meaningful subject matter expertise to the table to bring invaluable subject matter expertise to the table as needed. We are confident there are many other ways we can support this effort to be funded.

February 10, 2023

Ms. Nancy Farias
Director
Employment Development Department
800 Capitol Mall
Sacramento, CA 95814

RE: Community Economic Resilience Fund Pilot Project Proposal

Dear Director Farias:

The Bay Area is home to one of the most robust economies in the world, but many health care employers need to look outside the region to find employees. And the situation is not likely to get better anytime soon — the nine Bay Area counties are predicted to have a health care job shortage of 60,000 workers over the next five years. Although hospitals invest hundreds of millions of dollars annually in training California's next generation of health care providers, closing what has become a persistent workforce gap will require additional solutions.

This is why Hospital Council supports the Bay Area Good Jobs Partnership for Equity (BAGJE) proposal for the Community Economic Resilience Fund Pilot Project. Hospital Council, along with its regional employer network, is committed to supporting the proposal.

WORK TRANSFORMS LIVES

February 9, 2023

Ms. Nancy Farias
Director
Employment Development Department
800 Capitol Mall
Sacramento, CA 95814

RE: Letter of Support for the Bay Area Good Jobs Partnership for Equity's proposal to the Community Economic Resilience Fund Pilot Project

Dear Director Farias:

I write in support of the Bay Area Good Jobs Partnership for Equity's proposal to the Community Economic Resilience Fund Pilot Project grant. The funding of this proposal will assist in informing Jewish Vocational Service's (JVS) workforce development investments across the Bay Area that support individuals seeking career pathways that lead to employment at livable wages.

Jewish Vocational Service's mission is to transform lives by helping people to build in-demand skills and find great jobs. Our healthcare, employer-driven training programs are designed to meet the hiring needs of the highest growth sectors in the region. This work is strongly aligned with the BAGJE proposal, as it supports stronger regional and sub-regional sector partnerships that advance opportunities for marginalized communities that specifically connect to employers' needs.

The experience that JVS has gained by delivering healthcare programs in San Francisco, Alameda, and Contra Costa counties will allow us to be an asset on the regional and sub-regional healthcare sector tables created by this grant that will collaborate with industry, healthcare training programs in careers including medical assistants, medical administrative assistants, and dental assistants. We partner with workforce board, employers, and community organizations across the region to help Bay Area residents become trained for high quality employment in target industries. Since 2009, JVS has been the lead agency for the San Francisco HealthCare Academy under SFED's Economic Recovery and Resilience Fund.



Historically underserved and have many barriers to employment. The BAGJE proposal will make it that much easier to break down these barriers and provide access to careers and programs that lead to quality careers. Critical to our economic recovery in the Bay Area is making sure that our recovery is equitable and offers opportunity for all to receive high quality employment.

We support BAGJE because it will fund a regional approach that fosters economic development across the Counties of San Mateo, Santa Clara, San Francisco, Contra Costa, and Alameda, as well as the Cities of San Francisco, Oakland, San Jose, and Richmond. Economic growth takes holistic participation, and this proposal does just that by collaborating with industry, unions, industry associations, and community organizations to facilitate economic growth that leads to more jobs.

Thank you for your issuance of this grant, your consideration, and for funding to deliver jobs for local residents across California.

Sincerely,

Keith Brown, Asst. Executive Secretary-Treasurer
Alameda Labor Council

Josh Anjar, Executive Director
Contra Costa Labor Council

Jon Riley, Executive Director
Napa-Solano CLC

Jack A. Buckhorn,
Executive Director
North Bay Labor Council

Kim Tavaghiore, Executive Director
San Francisco Labor Council

Julie Lind, Executive
Secretary-Treasurer
San Mateo County CLC

Jean Cohen, Executive Officer
South Bay AFL-CIO Labor Council



SAN FRANCISCO

OFFICE OF ECONOMIC &
WORKFORCE DEVELOPMENT

RECENT WORKFORCE HIGHLIGHTS



SFOEWD
@sfoewd

Last week we participated in @SFHumanRights “Dreaming Forward: A Celebration of Black Joy, Power, and Excellence,” hosting panels on the Importance of Black Educators, Preserving Black Art and Culture, and The Power and Impact of Black Business Ownership.



6:28 PM · Feb 14, 2023 · 146 Views



SFOEWD @sfoewd · Jan 31

Our partners at @UpwardlyGlobal do incredible work for immigrants & refugees - matching jobs to their skills, linking them to certifications & licenses to work, providing training to upskill & advance their careers, and mentoring participants!

Learn more: bit.ly/3Y1SPJ0



RECENT WORKFORCE HIGHLIGHTS

SFOEWD Retweeted

London Breed @LondonBreed · Jan 31

Today we celebrated the new Village SF project in the Mission District, an expansion of critical services for our American Indian community. This 6-story building will include:

- Workforce development
- Youth center
- Cultural and ceremonial space
- Health clinic and more



24 16 76 16.1K



RECENT WORKFORCE HIGHLIGHTS



SEIU Local 2015
@SEIU2015



We gathered together to launch our San Francisco IHSS contract campaign and celebrate the #LunarNewYear. Thank you @LondonBreed and @Scott_Wiener for joining us. #UnionsForAll



7:00 PM · Feb 13, 2023 · 208 Views




RECENT WORKFORCE HIGHLIGHTS

BAY AREA

City job fair focuses on 'meaningful' work as S.F. tries to streamline its lengthy hiring process

Danielle Echeverria
Feb. 4, 2023 | Updated: Feb. 6, 2023 9:57 a.m.

[Gift this article](#)



The San Francisco City Job Fair attracts potential applicants to the County Fair Building.
Danielle Echeverria

On a drizzly Saturday afternoon, Layne Menn, who was recently laid off from her Bay Area tech job, found herself at the San Francisco County Fair Building, looking for something new.

SAN FRANCISCO OFFICE OF ECONOMIC & WORKFORCE DEVELOPMENT

BUDGET DISCUSSIONS

Virtual Budget Discussions Hosted by OEWD



Monday, January 30 at 6:00 PM
Tuesday, January 31 at 6:00 PM
Monday, February 13 at 6:00 PM

RSVP
link.oewd.org/budget

RECENT WORKFORCE HIGHLIGHTS

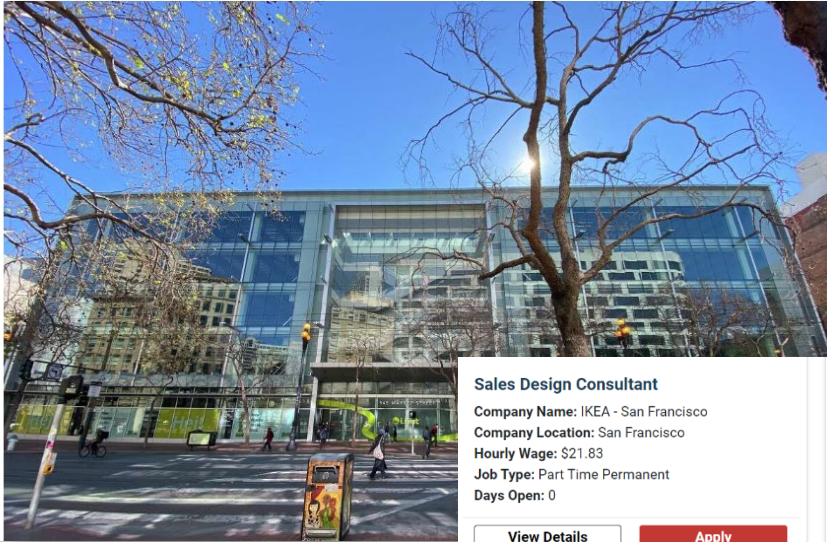
Local

Much-anticipated Ikea mall in downtown San Francisco opening soon



Andrew Chamings, SFGATE

Feb. 2, 2023



Sales Design Consultant

Company Name: IKEA - San Francisco
Company Location: San Francisco
Hourly Wage: \$21.83
Job Type: Part Time Permanent
Days Open: 0

[View Details](#)

[Apply](#)

Sales Design Consultant

Company Name: IKEA - San Francisco
Company Location: San Francisco
Hourly Wage: \$21.83
Job Type: Full Time Permanent
Days Open: 0

[View Details](#)

[Apply](#)

Retail

Company Name: IKEA - San Francisco
Company Location: San Francisco
Hourly Wage: \$21.83
Job Type: Full Time Permanent
Days Open: 0

[View Details](#)

[Apply](#)

Visual Merchandiser Co Worker

Company Name: IKEA - San Francisco
Company Location: San Francisco
Hourly Wage: \$21.83
Job Type: Full Time Permanent
Days Open: 0

[View Details](#)

[Apply](#)

Site Administrative Support - Part Time

Company Name: IKEA - San Francisco
Company Location: San Francisco
Hourly Wage: \$18.72
Job Type: Part Time Permanent
Days Open: 12

[View Details](#)

[Apply](#)

Safety & Security Co-Worker - Part Time

Company Name: IKEA - San Francisco
Company Location: San Francisco
Hourly Wage: \$20.20
Job Type: Part Time Permanent
Days Open: 12

[View Details](#)

[Apply](#)




RECENT WORKFORCE HIGHLIGHTS




The California Department of Rehabilitation and
Jobs for Humanity present

The Point

[Register Now](#)

 **February 28, 2023**
1 Day event

 **Milton Marks Conference Center**
San Francisco, CA

DISCUSSION

Joshua Arce, Director of Workforce Development
Office of Economic and Workforce Development

Prepared for Workforce Investment San Francisco (WISF)
Full Board Meeting

