

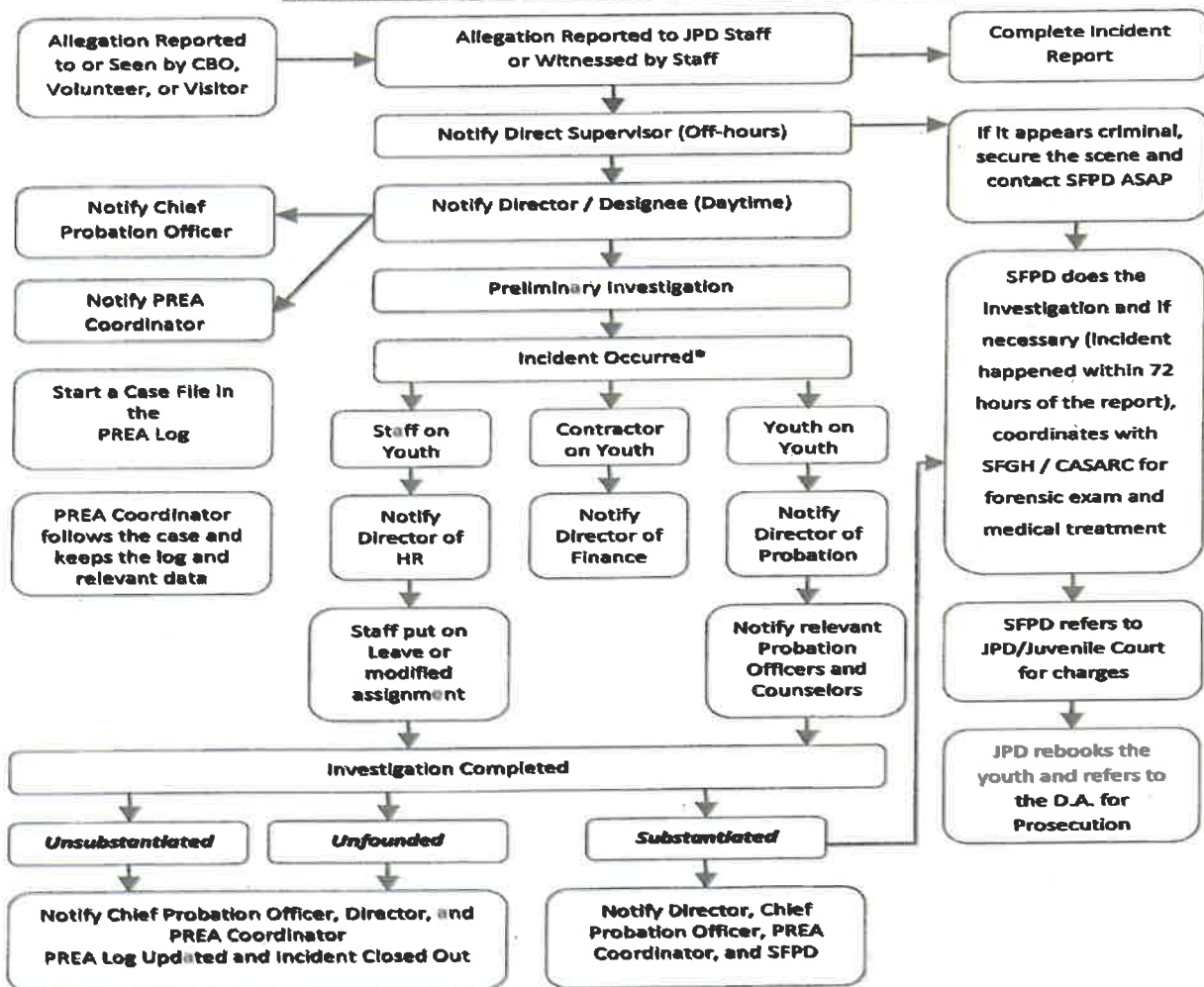


San Francisco Juvenile Probation Department

Juvenile Hall Policy and Procedures Manual

Chapter 5 - Youth Rights

PREA System-wide Reporting Flow Chart



*If the incident is clearly not a PREA incident, or there is clear, undisputable evidence at the onset that the incident did not occur, it will be documented in the PREA file and closed out with no further action needed.