

February 22, 2022



Mental Health San Francisco Implementation Working Group



San Francisco
Department of Public Health

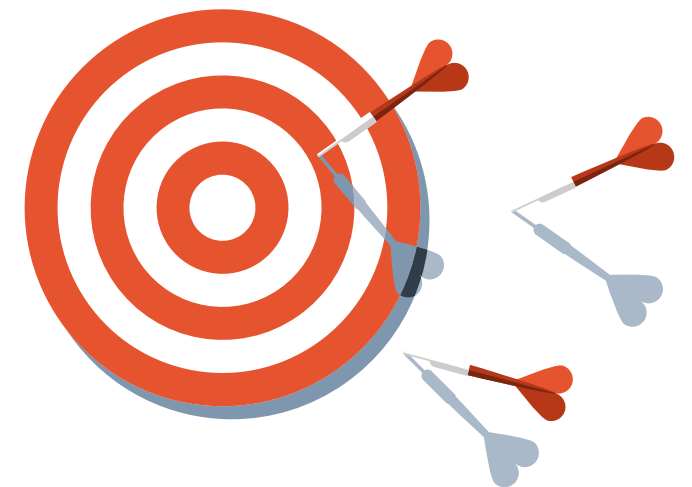
harder  co | community
research

A hand is shown in the foreground, pointing upwards with the index finger. The entire image has a blue overlay and a blurred background of people. The text "Call to Order/Roll Call" is centered in white.

Call to Order/Roll Call

Meeting Goals

- Review and vote on Crisis Diversion Unit recommendations
- Review and vote on Office of Coordinated Care recommendations
- Receive a briefing from the various Citywide Street Outreach Teams
- Receive an update from Department of Homelessness and Supportive Housing



All materials can be found on the MHSF IWG website at: <https://www.sfdph.org/dph/comupg/knowlcol/mentalhlth/Implementation.asp>



Reminder: Mental Health SF Domains



Shalini Rana



Simon Pang



Laura Marshall



Kevin Lagor



Dr. Angelica Almeida



Michael Mason



Marlo Simmons



Dr. David Pating



Heather Weisbrod



Yoonjung Kim



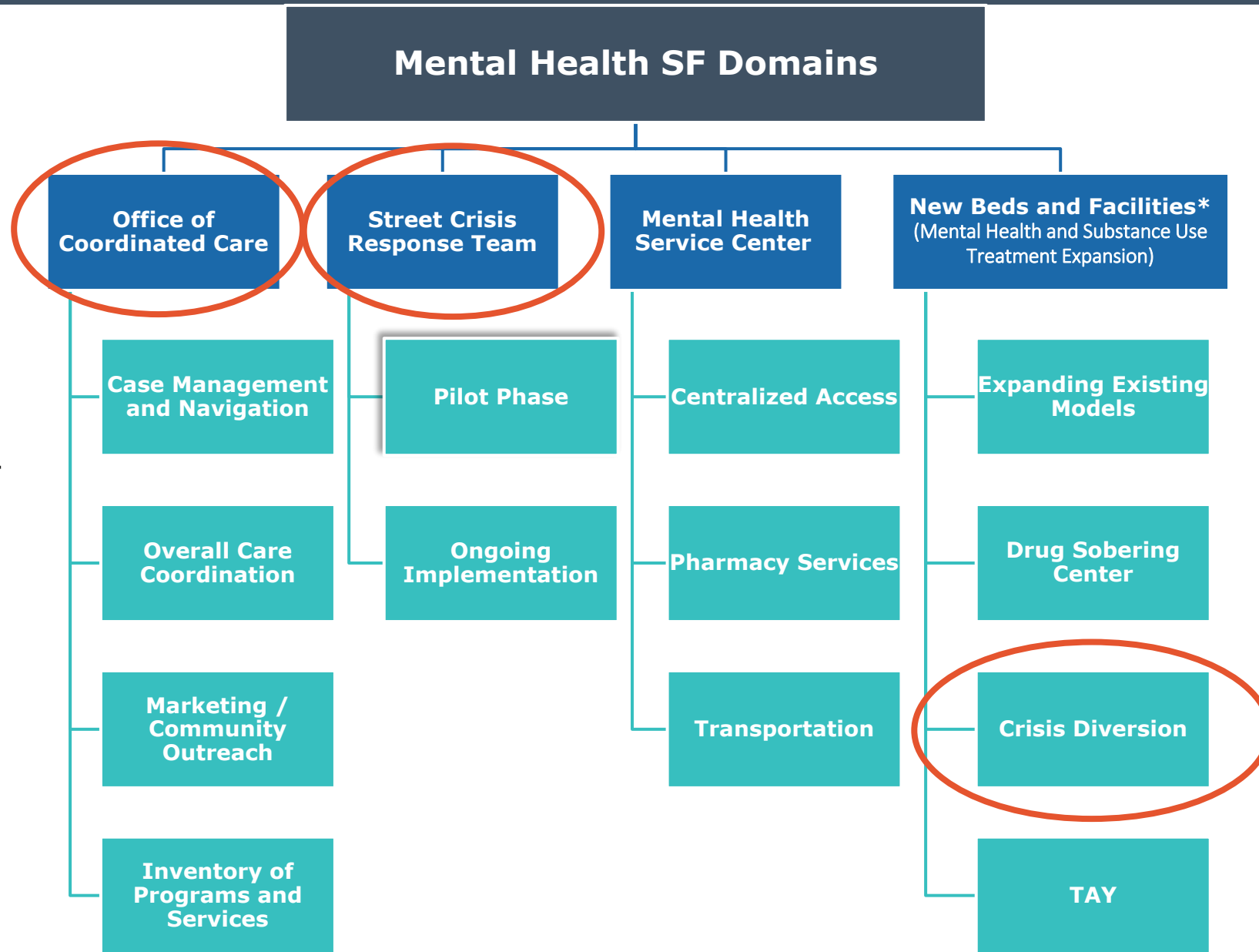
Elizabeth Hewson



Eme Garcia



Kristina Leonoudakis-Watts



9:10-9:15

Discussion Item #1

Remote meeting update



All materials can be found on the MHSF IWG website at:
<https://www.sfdph.org/dph/comupg/knowlcol/mentalhlth/Implementation.asp>

State and Local Requirements

RESOLVED, That MHSF IWG finds as follows:

1. The State of California and the City remain in a state of emergency due to the COVID-19 pandemic. At this meeting, MHSF IWG has considered the circumstances of the state of emergency.
2. State and City officials continue to recommend measures to promote physical distancing and other social distancing measures, in some settings.
3. Because of the COVID-19 pandemic, conducting meetings of this body and its Discussion Groups in person would present imminent risks to the safety of attendees, and the state of emergency continues to directly impact the ability of members to meet safely in person

Public Comment for Discussion Item #1

Remote meeting update

Steps:

- Call (415) 655-0001
- Enter access code 2483 105 4442
- Press `#` and then `#` again



Vote on Discussion Item #1

Remote meeting “findings”

Decision Rule:

- Simply majority, by roll call



9:15-9:20

Discussion Item #2

Approve Meeting Minutes

All materials can be found on the MHSF IWG website at:
<https://www.sfdph.org/dph/comupg/knowlcol/mentalhlth/Implementation.asp>



Public Comment for Discussion Item #2

Approve Meeting Minutes

Steps:

- Call (415) 655-0001
- Enter access code 2483 105 4442
- Press `#` and then `#` again



Vote on Discussion Item #2

Approve Meeting Minutes

Decision Rule:

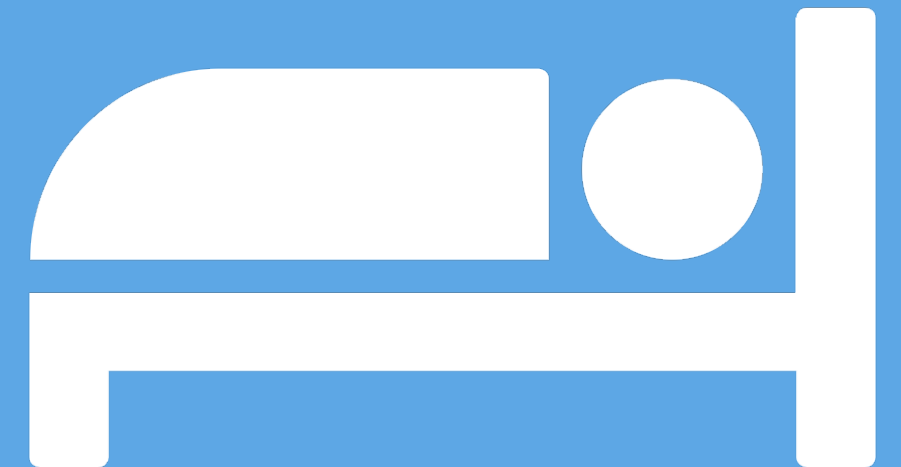
- Simply majority, by roll call



9:20-10:00

Discussion Item #3

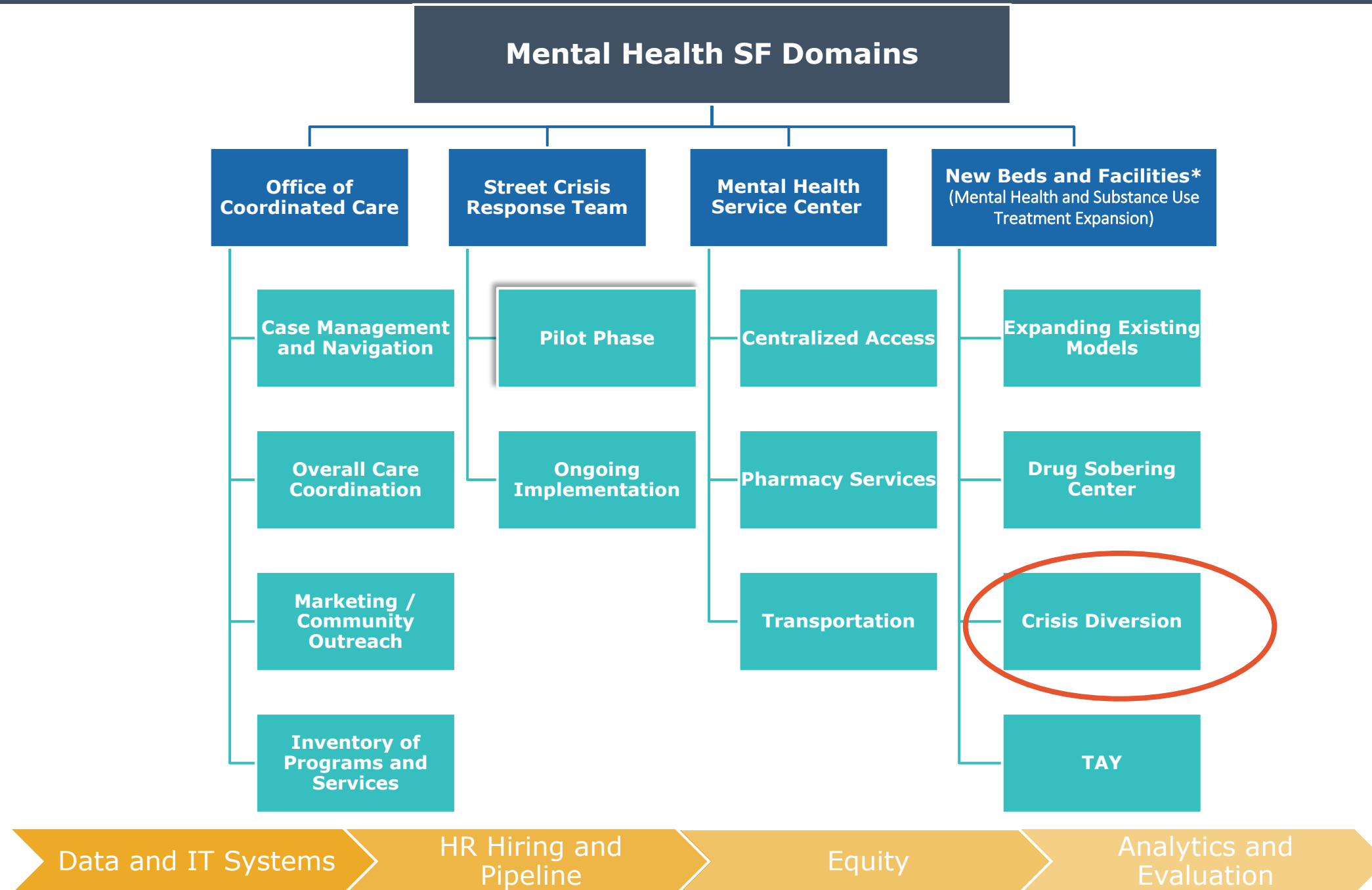
New Beds and Facilities: Crisis Diversion Unit Recommendations



All materials can be found on the MHSF IWG website at:
<https://www.sfdph.org/dph/comupg/knowlcol/mentalhlth/Implementation.asp>



Reminder: Mental Health SF Domains



Dr. David Pating



Yoonjung Kim



Eme Garcia

Reminder of the Recommendation Roadmap

You are here!



**September 28-
October 26***
IWG receives
background and
discusses

November 9*
IWG engages in
white board
session to source
recommendation
ideas

December
Discussion Group
crafts
recommendations

January 25*
IWG reviews
Discussion Group's
work

February
Discussion Group
refines
recommendation
wording

February 22 *
Review
recommendations
and vote

Conflict of Interest key
● = step out
● = be vigilant
● = all can participate

* Occurs during monthly IWG public meetings

Group Agreements

1. No one knows everything, together we know a lot
2. Listen actively, respectfully and for new information
3. Critique the idea, not the person
4. Step up/Step back
5. Speak from own experience; avoid generalizations
6. Focus on solutions that best create anti-racist, anti-sexist, anti-transphobic, anti-xenophobic, and promote a decolonized community
7. Use virtual meeting tools (camera, raise hand)
8. Allow the facilitator to guide the process

Crisis Diversion Unit Recommendations

Share screen
of recommendations



Crisis Diversion Unit Recommendations

What is your level of agreement with the current list of Crisis Diversion Unit Recommendations?

1

No way, I block this

2

I see issues we need to resolve

3

I see issues, but can live with it

4

I'm fine with this as is

5

I love this!

Public Comment for Discussion Item #3

Crisis Diversion Unit Recommendations

Discussion

Steps:

- Call (415) 655-0001
- Enter access code 2483 105 4442
- Press `#` and then `#` again

Vote on Discussion Item #3

Crisis Diversion Unit Recommendations

Decision Rule:

- Simply majority, by roll call

10:00-11:00 AM

Discussion Item #4

Citywide Street Outreach Teams Briefing



All materials can be found on the MHSF IWG website at:
<https://www.sfdph.org/dph/comupg/knowlcol/mentalhlth/Implementation.asp>



Reminder: Mental Health SF Domains



Shalini Rana



Kevin Lagor



Laura Marshall



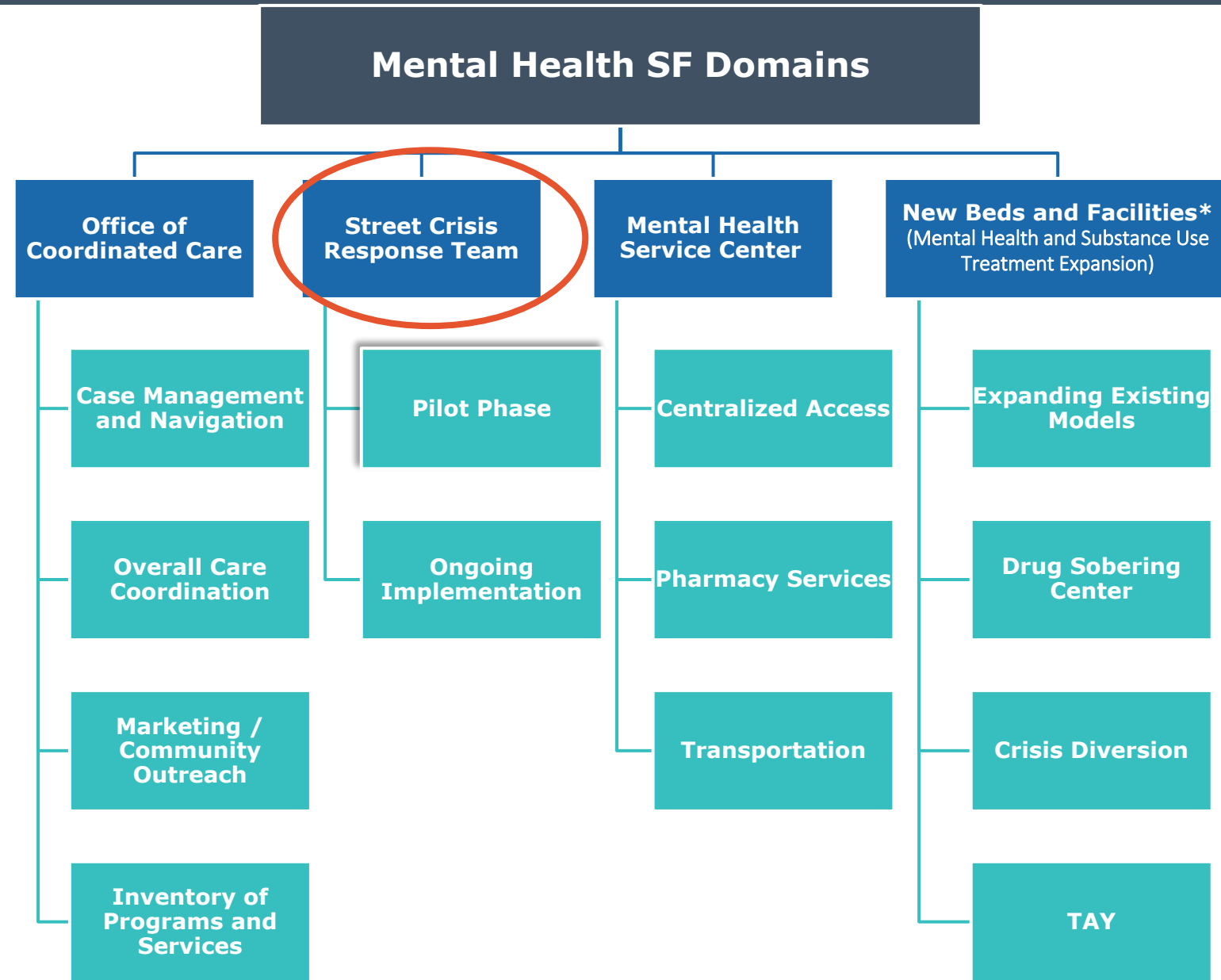
Simon Pang



Dr. Angelica Almeida



Michael Mason



Data and IT Systems

HR Hiring and Pipeline

Equity

Analytics and Evaluation



Public Comment for Discussion Item #4 Citywide Street Outreach Teams Briefing

Steps:

- Call (415) 655-0001
- Enter access code 2483 105 4442
- Press `#` and then `#` again

A blue-tinted photograph of a desk setup. In the foreground, a white ceramic mug sits on the left. To its right, a laptop is open, and a smartphone lies flat on the desk surface. The background is slightly out of focus, showing a window with blinds and some papers or a calendar on the wall. The text "5 Minute Break" is overlaid in a bold, white, sans-serif font in the center of the image.

5 Minute Break

11:40 AM-12:30 PM

Discussion Item #5

Homelessness and Supportive Housing Update



Kristina Leonoudakis-Watts



Elizabeth Hewson

All materials can be found on the MHSF IWG website at:

<https://www.sfdph.org/dph/comupg/knowlcol/mentalhlth/Implementation.asp>



DEPARTMENT OF
HOMELESSNESS AND
SUPPORTIVE HOUSING

Permanent Supportive Housing- Serving the MHSF Population

SF Dept. of Homelessness & Supportive Housing

02/22/2022

<http://hsh.sfgov.org>



The Department of Homelessness and Supportive Housing (HSH) - Who We Are and What We Do.

27

- Our Mission: Make homelessness in San Francisco **rare, brief** and **one-time**
- **Coordinate** w/other City and County of San Francisco departments and **centralize** city programs and resources to address homelessness.
- Continue operations of the **core and essential programs** that shelter, serve, and house > 14,000 people every day in our communities.



“Permanent Supportive Housing”

28

Defined:

- Affordable, stable housing w/imbedded, voluntary services.
- Serves individuals with multiple, chronic, complex needs.
- An innovative and proven solution to some of our communities' toughest problems.

HSH and PSH:

- **Centralize** and **coordinate** housing and social services.
- Ensure **equitable** and **timely** access to housing.
- **Mitigate** risks to housing stability.



But How?

29

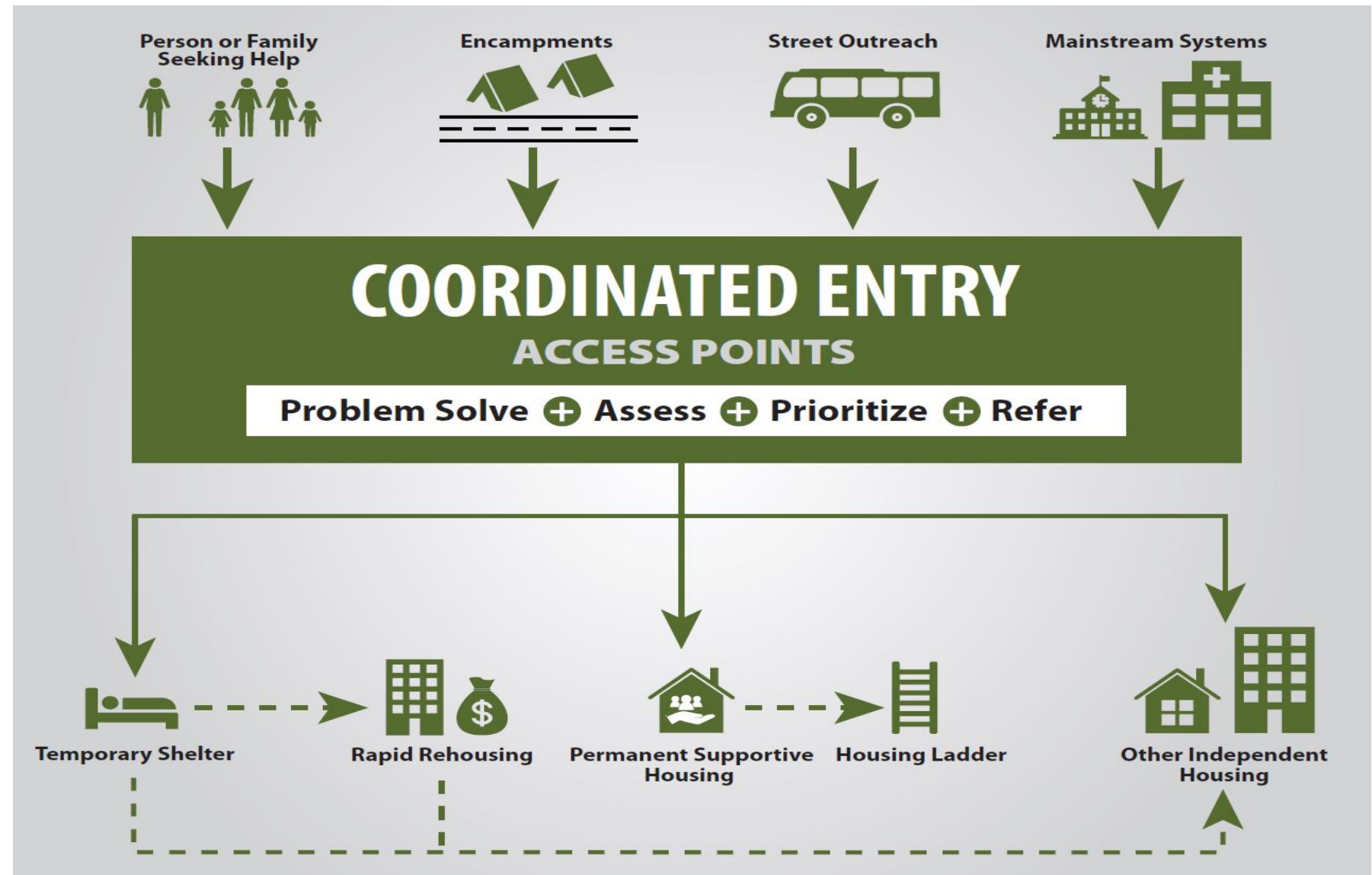




Coordinated Entry Process

30

Front Door of
San Francisco's
Homelessness
Response System:



<http://hsh.sfgov.org>

Coordinated Entry Demographics

Reporting Period: 7/1/2019 through 12/31/2021

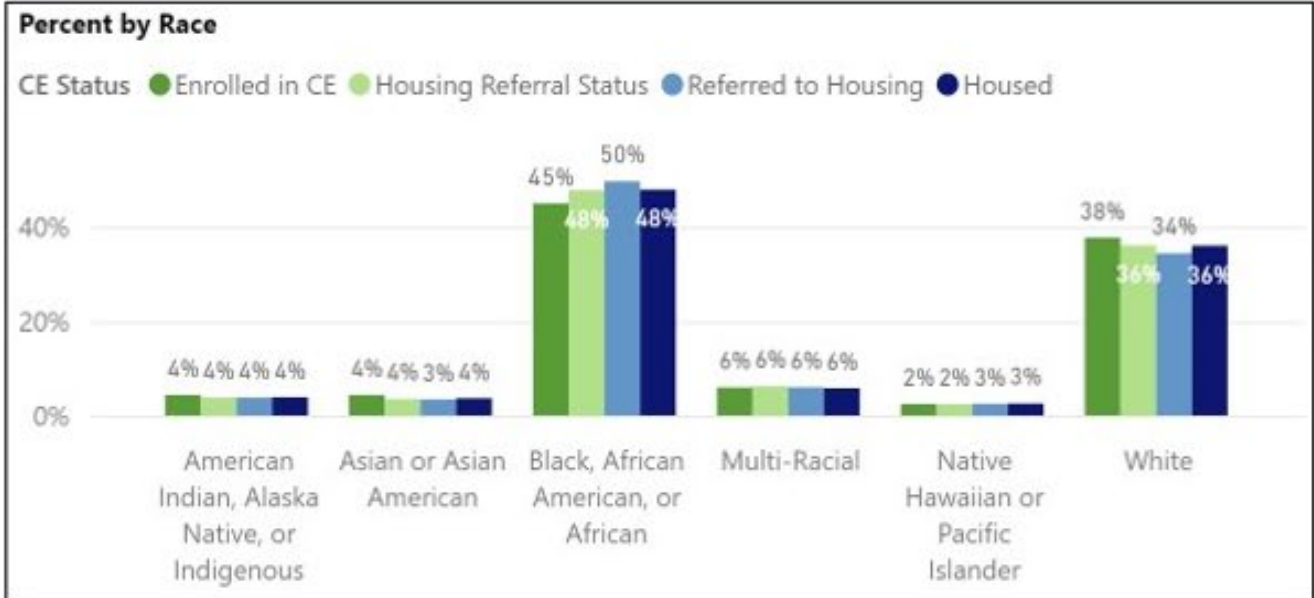
Reporting Period
All

Population
All

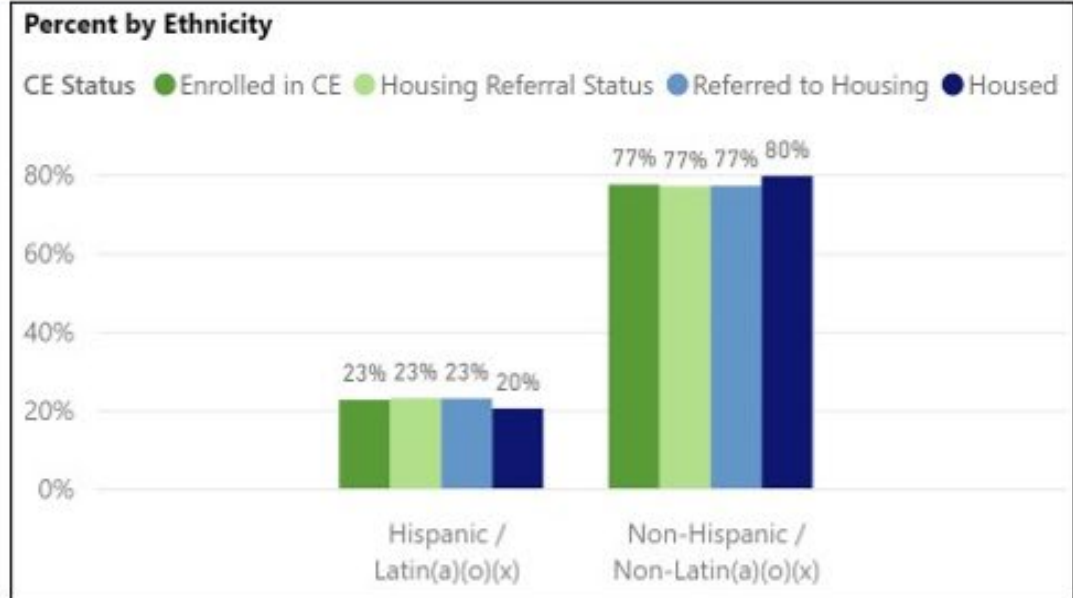
CE Status
All

Click to Reset Filters

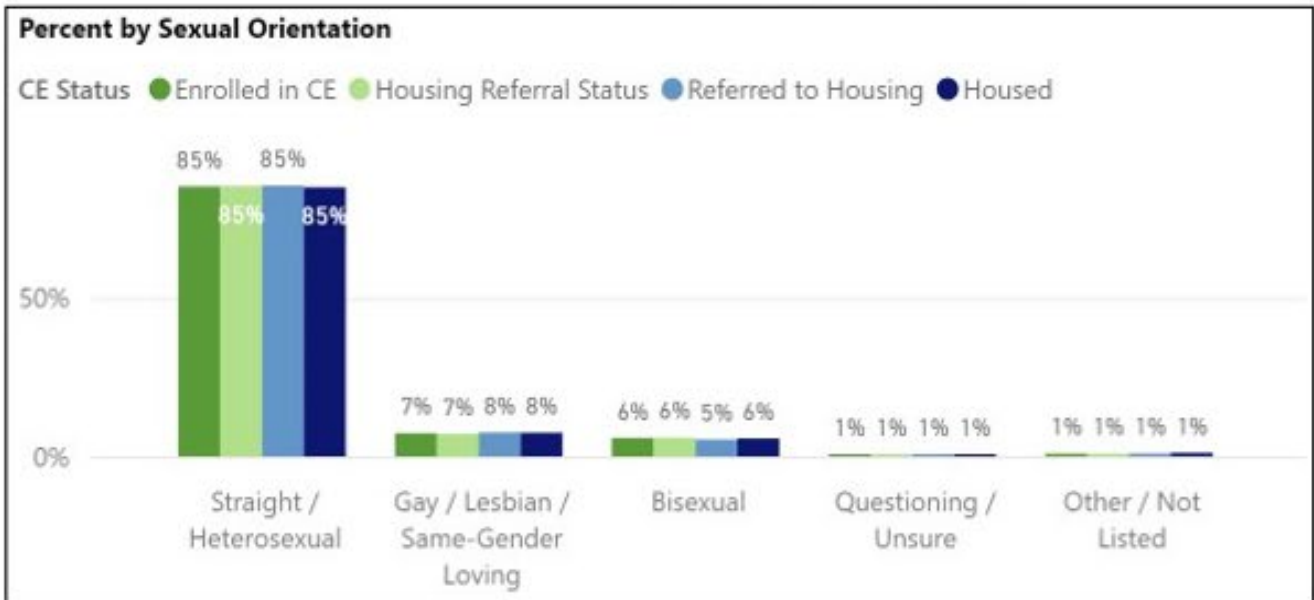
Hold the CTRL key to select multiple



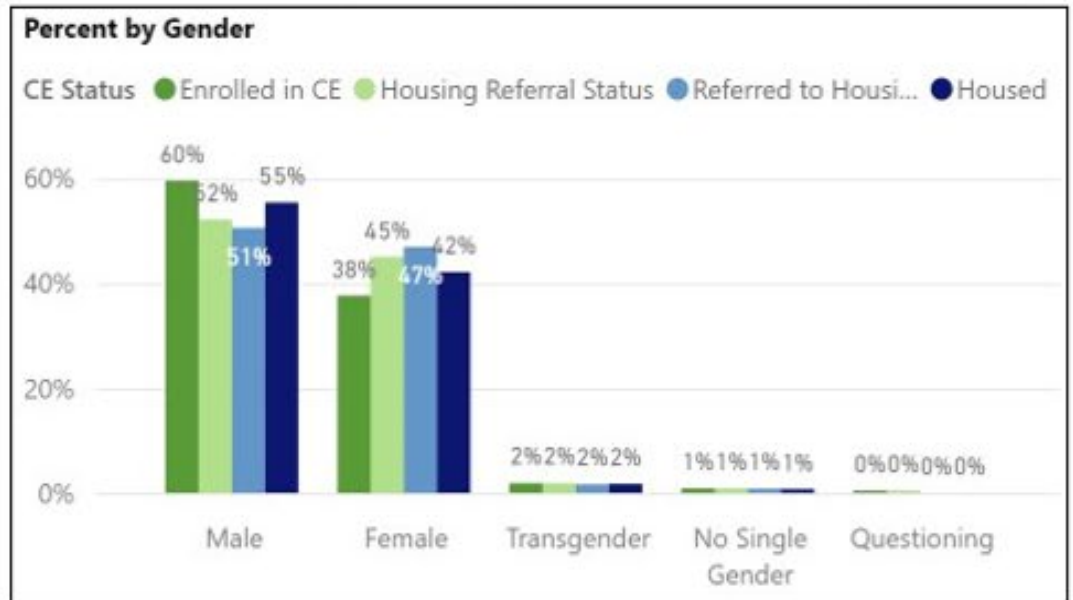
Race is incomplete for 8% of clients (3% Data Not Collected; 6% Doesn't Know / Refused)



Ethnicity is incomplete for 2% of clients (1% Data Not Collected; 1% Doesn't Know / Refused)



Sexual Orientation is incomplete for 7% of clients (5% Data Not Collected; 2% Refused)



Gender is incomplete for 0% of clients (0% Data Not Collected; 0% Doesn't Know / Refused)



Permanent Supportive Housing Landscape

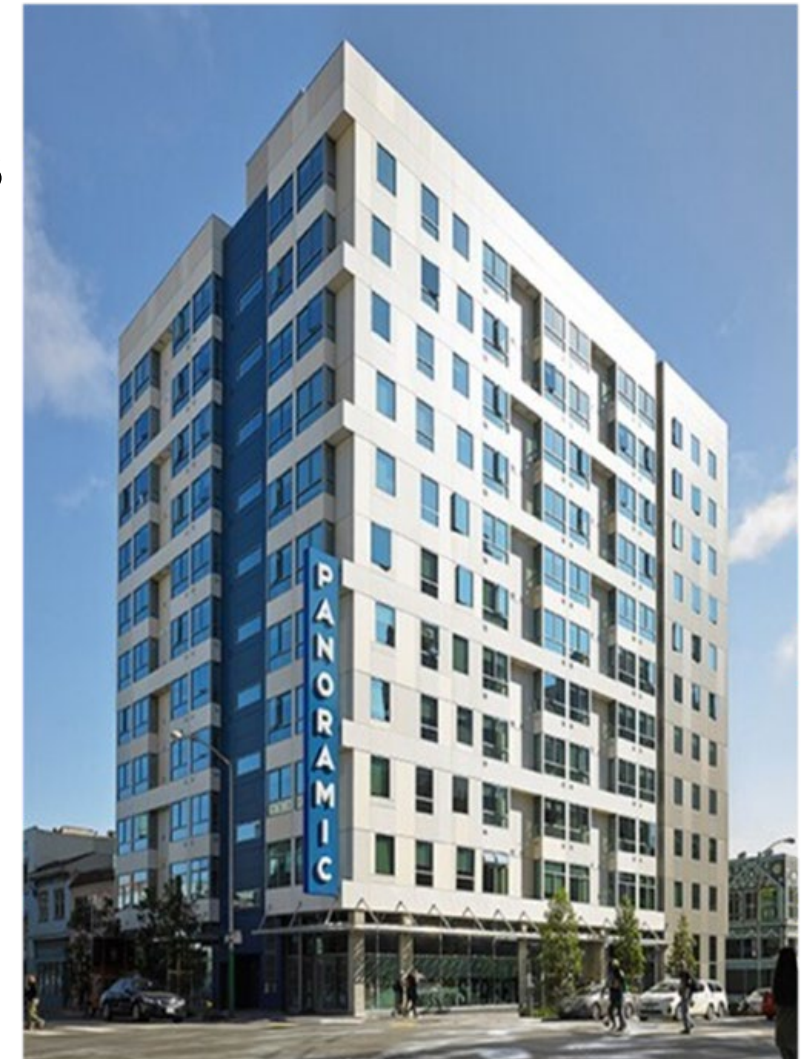
32

• 145 PSH sites

- > 8,400 units: youth, families, adults, and seniors
- 9 new sites leased in 2021
- 10+ new sites (~1,000 units) opening in 2022

• Spectrum of housing is wide

- Level and types of services and amenities vary





PSH Supportive Services

33

- Spectrum of services is wide
 - Standards of service need to be elevated to meet needs
 - New housing: better matching
 - Existing housing: strategize to get service to comparable levels
- Housing-focused Case Management and tenancy support
 - Other wrap-around services in some programs: money management, food security, clinical case management, nursing
- Top 2 priorities:
 - Strengthening on-site support services teams, including pay equity and case management ratios
 - Site-based or roving nursing and behavioral health support



CCSF Departments- How We Work Together to Support the MHSF Population

34

- “MHSF Population” – SF residents living with complex, chronic mental health and/or substance use challenges who are experiencing homeless, uninsured, and/or enrolled in Medi-Cal or Healthy San Francisco.
- Care Coordination, Information Sharing, Communication





Department of Public Health

35

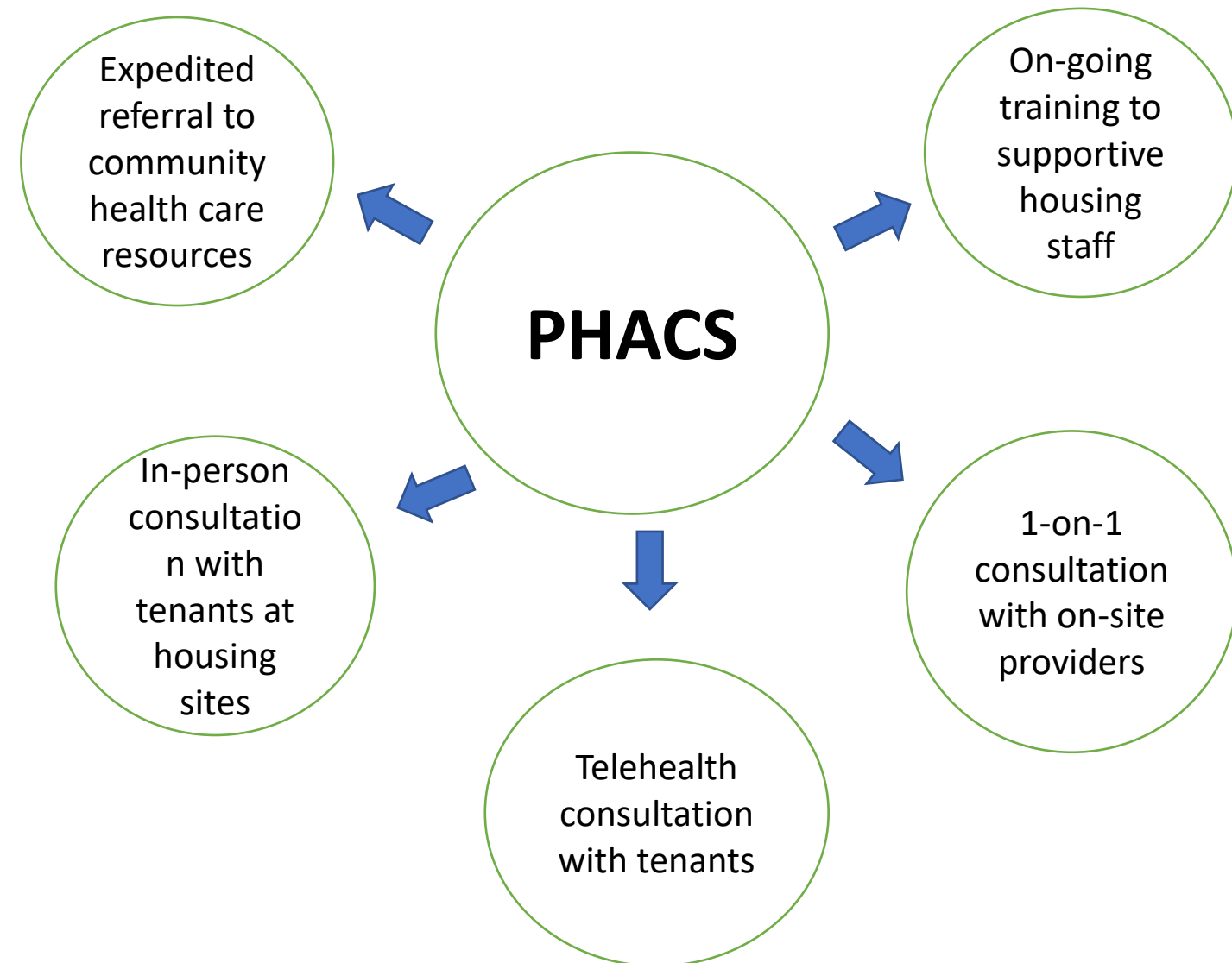
- Area of expertise = **Higher acuity health needs**
 - Residential care and treatment facilities.
- Care coordination and collaborative successes:
 - Medical support staff integrated at HSH PSH sites.
 - Whole Person Integrated Care (WPIC).
 - “Office of Care Coordination”
 - “Shelter in Place Hotels”
 - “Permanent Housing Advanced Clinical Services” (PHACS)



Permanent Housing Advanced Clinical Services (PHACS)

36

• DPH enhanced physical and behavioral health services and support for PSH





Other CCSF Departments

37

- Department of Aging and Adult Services
 - In-Home Support Services pilot
 - “Home Safe”
- Human Services Agency
 - Benefits, linkages, coordination
 - Housing, Disability and Advocacy Program (HDAP)
- Mayor’s Office on Housing and Community Development
 - Coordinate and ensure ongoing PSH pipeline



“Our City, Our Home” (Prop C)

38

- Passed in 2018, extensive input from people w/lived experience, staff on the front lines, key CCSF departments.
 - At least 50% for permanent supportive housing
 - At least 25% to DPH for the creation of new mental health services programs or programs designed for homeless people severely impaired by behavioral health issues
- Targets the mental health crisis
 - Intensive wrap-around services in multiple settings
 - Housing for those suffering from mental illness and substance use disorders.
- HSH and Prop C
 - PHACS (current)
 - Acquisition of new PSH sites (in the pipeline)- 4 sites of 10 opening 2022.



Additional HSH References

39

<https://hsh.sfgov.org/committees/lhcb/>

<https://hsh.sfgov.org/services/how-to-get-services/referrals-and-housing-assistance/>

<https://hsh.sfgov.org/get-involved/2022-pit-count/>



DEPARTMENT OF
HOMELESSNESS AND
SUPPORTIVE HOUSING

Thank you!

Contact Us: @sfgov.org

Learn: hsh.sfgov.org | Follow: [@SF_HSH](https://twitter.com/SF_HSH) | Like: [@SanFranciscoHSH](https://www.facebook.com/SanFranciscoHSH)

Public Comment for Discussion Item #5 Homelessness and Supportive Housing Update

Steps:

- Call (415) 655-0001
- Enter access code 2483 105 4442
- Press `#` and then `#` again

Public Comment for Any other matter within the Jurisdiction of the Committee not on the Agenda

Steps:

- Call (415) 655-0001
- Enter access code 2483 105 4442
- Press `#` and then `#` again



Anticipated IWG Meeting Topics 2022

Topic Area	Jan	Feb	Mar	Apr	May	Jun	Jul	Aug	Sep	Oct	Nov	Dec
IWG Domains												
Street Crisis Response Team			U	U					U			
New Beds & Facilities (NB&F): Drug Sobering Center					U					U		
NB&F: Crisis Diversion Unit (CDU)	D	D	D					U				
NB&F: Transitional Aged Youth (TAY)			D	D	D	D					U	
Office of Coordinated Care (OCC)	D	D	D	U			U					U
Mental Health Service Center (MHSC)			U	U	U	D	D	D	D			
Analytics & Evaluation	U						U					
<i>Deliverable: IWG Annual Progress Report</i>										★		
<i>Deliverable: IWG Implementation Report</i>												★
Other Intersecting Departments/Projects/Briefings												
CON: Citywide Street Outreach Briefing (SCRT, SFHOT, SORT, etc.)		U										
HSH: Housing Briefing		U										
DPH MHSF Budget Update				U								

D=Design U=Update

Local Vaccination Requirements

Please submit your vaccination status and documentation to Carlos Benitez (carlos.benitez@sfgov.org), SF Controller's Office HR Manager

Please refer to the email you received on 2/1/22 for additional details.



Housekeeping

- Next Meeting Date and Time
 - 4th Tuesday of the month 9:00AM-1:00PM
 - March 22, 2022
- Meeting Minutes Procedures
 - <https://www.sfdph.org/dph/comupg/knowlcol/mentalhlth/Implementation.asp>
 - Draft minutes in the next two weeks
 - Approved meeting minutes will be posted
- New public input process: MHSF IWG e-mail address for public input: MentalHealthSFIWG@sfgov.org

Adjourn