

January 19, 2022
Visual Arts Committee Meeting

**Item 1: Call to Order, Roll Call,
and Agenda Changes**

Public Comment via WebEx:

- Navigate to the hand icon in the lower right corner.
- Raise your hand to be placed in the queue.
- You will hear a beep and you will be prompted to speak.



Public Comment via Phone:

- Dial 415-655-0001
- Enter the Access Code: [2490 467 8072](tel:24904678072)
- When prompted, dial ‘*’ then ‘3’ to be added to the speaker line.
- Your line will be unmuted and you will hear, “*Your line has been unmuted.*” This is your time to speak.

Once your time is up, you will be put back on mute. Participants who wish to speak on other public comment periods may stay on the line and listen for the next public comment opportunity. For further inquiries regarding Commission matters, email art-info@sfgov.org.

Item 2 : General Public Comment

Public Comment via WebEx:

- Navigate to the hand icon in the lower right corner.
- Raise your hand to be placed in the queue.
- You will hear a beep and you will be prompted to speak.



Public Comment via Phone:

- Dial 415-655-0001
- Enter the Access Code: [2490 467 8072](tel:24904678072)
- When prompted, dial ‘*’ then ‘3’ to be added to the speaker line.
- Your line will be unmuted and you will hear, “*Your line has been unmuted.*” This is your time to speak.

Once your time is up, you will be put back on mute. Participants who wish to speak on other public comment periods may stay on the line and listen for the next public comment opportunity. For further inquiries regarding Commission matters, email art-info@sfgov.org.

Item 3: Consent Calendar

Consent Calendar

1. Motion to approve *El son de la Mision*, a mural design by artist Carlos Gonzalez. The mural will be installed on 681 Florida St. at Bryant St., in District 9. The mural is a triptych, measuring: 16.9 ft. by 14.3 ft.; 16.9 ft. by 15 ft.; 16.9 ft. by 14.3 ft. The project is funded by the Mission Economic Development Agency. The artwork will not become part of the Civic Art Collection.
2. Motion to approve *Peace in the Heart of the Community*, a mural design by artist Ross Holzman. The mural will be installed at Guadalupe Elementary School on 859 Prague St. at Cordova St. The street level wall measures 5 ft. by 42 ft. and doorway wall measures 12 ft. by 18 ft. The project is funded by a grant from the San Francisco Arts Commission and private donations. The artwork will not become part of the Civic Art Collection.
3. Motion to approve *Psychedelic Golden Gate Skate*, a mural design by artist Aimee Bruckner. The mural will be installed at the 6th Avenue Skate Area in Golden Gate Park. The mural measures 93 ft. by 28 ft. The project is funded by an in-kind grant from Church of 8 Wheels. The artwork will not become part of the Civic Art Collection.

Consent Calendar

4. Motion to authorize the Director of Cultural Affairs to increase the contract with Lite Brite Neon Studio LLC from \$72,854 to \$80,454 (an increase of \$7,600) for additional design services for an artwork by Andrea Bowers (DBA Radical Patience Inc.) for the San Francisco International Airport: Harvey Milk Terminal 1 Underpass Lighting Project. Additional design services are to resolve a conflict between the artwork and the Airport's signage program.

5. Motion to authorize the Director of Cultural Affairs to increase the contract with Andrea Bowers (DBA Radical Patience Inc.) from \$151,000 to \$160,500 (an increase of \$9,500) for additional design services for the San Francisco International Airport: Harvey Milk Terminal 1 Underpass Lighting Project. Additional design services are to resolve a conflict between the artwork and the Airport's signage program.

Public Comment via WebEx:

- Navigate to the hand icon in the lower right corner.
- Raise your hand to be placed in the queue.
- You will hear a beep and you will be prompted to speak.



Public Comment via Phone:

- Dial 415-655-0001
- Enter the Access Code: 2490 467 8072
- When prompted, dial ‘*’ then ‘3’ to be added to the speaker line.
- Your line will be unmuted and you will hear, *“Your line has been unmuted.”* This is your time to speak.

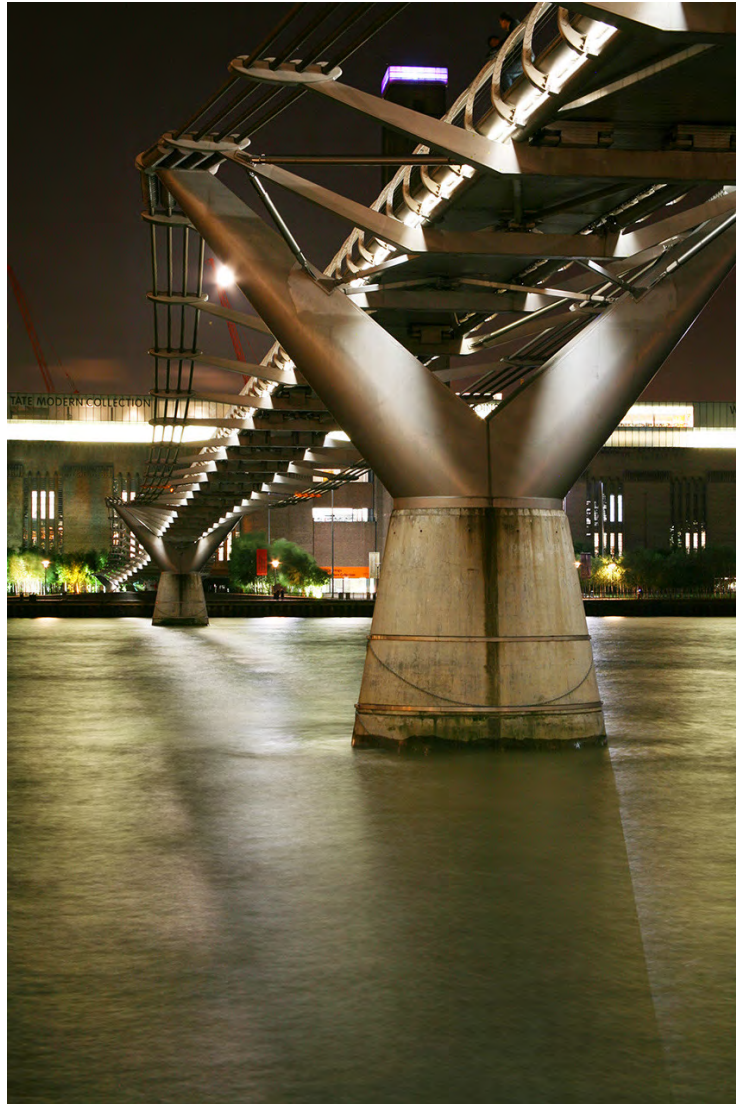
Once your time is up, you will be put back on mute. Participants who wish to speak on other public comment periods may stay on the line and listen for the next public comment opportunity. For further inquiries regarding Commission matters, email art-info@sfgov.org.

**Item 4: Treasure Island
Documentary Photography Project**

CODY ANDRESEN



CODY ANDRESEN



CODY ANDRESEN



CODY ANDRESEN



DAVID ALAN BOYD



DAVID ALAN BOYD



DAVID ALAN BOYD



DAVID ALAN BOYD



JOHN CHIARA



JOHN CHIARA



JOHN CHIARA



JOHN CHIARA



JANET DELANEY



JANET DELANEY



JANET DELANEY



JANET DELANEY



MIDO LEE



MIDO LEE



MIDO LEE



MIDO LEE



Public Comment via WebEx:

- Navigate to the hand icon in the lower right corner.
- Raise your hand to be placed in the queue.
- You will hear a beep and you will be prompted to speak.



Public Comment via Phone:

- Dial 415-655-0001
- Enter the Access Code: [2490 467 8072](tel:24904678072)
- When prompted, dial ‘*’ then ‘3’ to be added to the speaker line.
- Your line will be unmuted and you will hear, “*Your line has been unmuted.*” This is your time to speak.

Once your time is up, you will be put back on mute. Participants who wish to speak on other public comment periods may stay on the line and listen for the next public comment opportunity. For further inquiries regarding Commission matters, email art-info@sfgov.org.

Item 4: **Treasure Island Documentary Photography Project**

Discussion and Possible Action: to approve the selection of five local artists: Cody Andresen, David Alan Boyd, John Chiara, Janet Delaney, and Mido Lee to document Treasure Island for a period of one year, as recommended by the review panel.

Discussion and Possible Action: to authorize the Director of Cultural Affairs to enter into a contract with Cody Andresen, David Alan Boyd, John Chiara, Janet Delaney, and Mido Lee for an amount not to exceed \$15,000 each for photographically documenting the ongoing development of Treasure Island for a period of one year.

Item 5: Mission Park Extension

Mission Creek Park Extension Public Art Project







Mission Creek Park Extension Public Art Project

- Focal sculpture, or series of smaller sculptures, located at the entrance of Mission Creek Park where Channel Street meets Mission Bay Drive.
- Artwork may consist of durable, natural materials that are appropriate for exterior use, including metal, stone, glass, and/or wood.
- Artwork may be illuminated at night.

Project Goals

- Artwork should be inspired by and responsive to the site, including its natural and physical landscape, history, and use.
- Artwork should have a visual impact from a distance, yet be integrated into the landscape and appropriate to the scale of the site.

Budget

- **Total Art Implementation Budget: \$685,000**
 - **Estimated Artist Contract Budget: \$535,000**, inclusive of all artist's fees, as well as associated expenses for artwork design, engineering, fabrication, insurance, and transportation.
 - **Estimated Site Work and Installation Allocation: \$150,000**, performed under separate contract with the City, and inclusive of artwork foundation, lighting, installation, and other associated site expenses.

Review Process to Date

1. Request for Qualifications (RFQ) posted June 21 – August 27, 2021
2. Qualification Panel met September 17, 2021. Reviewed 135 artists to create a short-list of 30 artists.
3. Artist Review Panel met on September 23, 2021 to review shortlisted artists. Recommended 3 finalists, who were approved by the Visual Arts Committee and Full Commission.
4. Artist orientation with project team and stakeholders on October 28, 2021
5. Display of finalist proposals for public comment December 13 – January 3, 2022.
6. Presentation of proposals to Mission Bay CAC on January 13, 2022.

Voting Panel Composition

- **Arts Commission Representative:** *Commissioner Janine Shiota*
- **Client Representative:** *OCII Commissioners Miguel Bustos*
- **Outside Arts Professionals:** *Walter Kitundu and Jenny Gheith*
- **Community Representative:** *Sarah Davis*
- **Design Team Representatives** (shared vote): *Nick Gotthardt and Luke Stewart*

Scoring Criteria

Artistic Merit (7pts): Artistic merit may be judged by such measures as originality of concept and artistic vision; the degree to which the work engages the viewer emotionally, intellectually, spiritually; the quality of craftsmanship or mastery of skills and techniques.

Relevant Skills & Experience (3pts): The panel shall consider the assessed ability of an artist to successfully implement the project, such as the ability to work constructively with other project stakeholders, meet deadlines, willingness to resolve issues as they arise, and generally manage the demands of the project. (3 pts)

Meets Project Goals (6pts): Proposal that meets the specific goals of the project:

- ✓ Inspired by and responsive to the site, including its natural and physical landscape, history, and use.
- ✓ Visual impact from a distance yet be integrated into the landscape and appropriate to the scale of the site.
- ✓ Meaningful connection to Mission Creek/Mission Bay/San Francisco.

Feasibility and Maintainability (4pts): Proposal is judged to be feasible within the budget and maintainable within the means of the Commission.



**MISSION CREEK PARK EXTENSION
ARTIST REVIEW PANEL TWO SUMMARY**

MEETING DATE

January 18, 2022

VOTING SELECTION PANELISTS

Miguel Bustos, Chair, Commission on Community Investment and Infrastructure

Sarah Davis, Mission Bay Community Advisory Committee, Community Representative

Jenny Gheith, Assistant Curator, Department of Painting and Sculpture, SFMOMA

**Nick Gotthardt, Principal, Surfacedesign Inc

Walter Kitundu, Artist

**Luke Stewart, Director of Design and Planning, Mission Bay Development Group

**sharing a vote

PROCESS

Three artist finalists presented their proposals for the Mission Creek Park Extension Park Public Art Project. The Artist Review Panel discussed the finalists' proposals and scored each artist on the following criteria (1= low score):

Artistic Merit (1-7)

Relevant Skills and Experience (1-3)

Meets Project Goals (1-6)

Feasibility and Maintainability (1- 4)

RESULTS

Rigo 23 117

Windy Chien 97

Adrien Segal 87

ARTS COMMISSION APPROVAL

Discussion and Possible action: to approve artist Rigo 23 (Ricardo Gouveia) and proposal for the Mission Creek Park Extension Public Art Project, as recommended by the artist review panel.

Discussion and Possible action: to authorize the Director of Cultural Affairs to enter into contract with artist Rigo 23 (Ricardo Gouveia) for an amount not to exceed \$535,000 for design, fabrication, transportation and installation consultation of an artwork for the Mission Creek Park Extension Public Art Project.

RIGO 23 - Art Proposal for The Mission Creek Park Extension

Unflagging Presence:

The California Grizzlies of Mission Creek

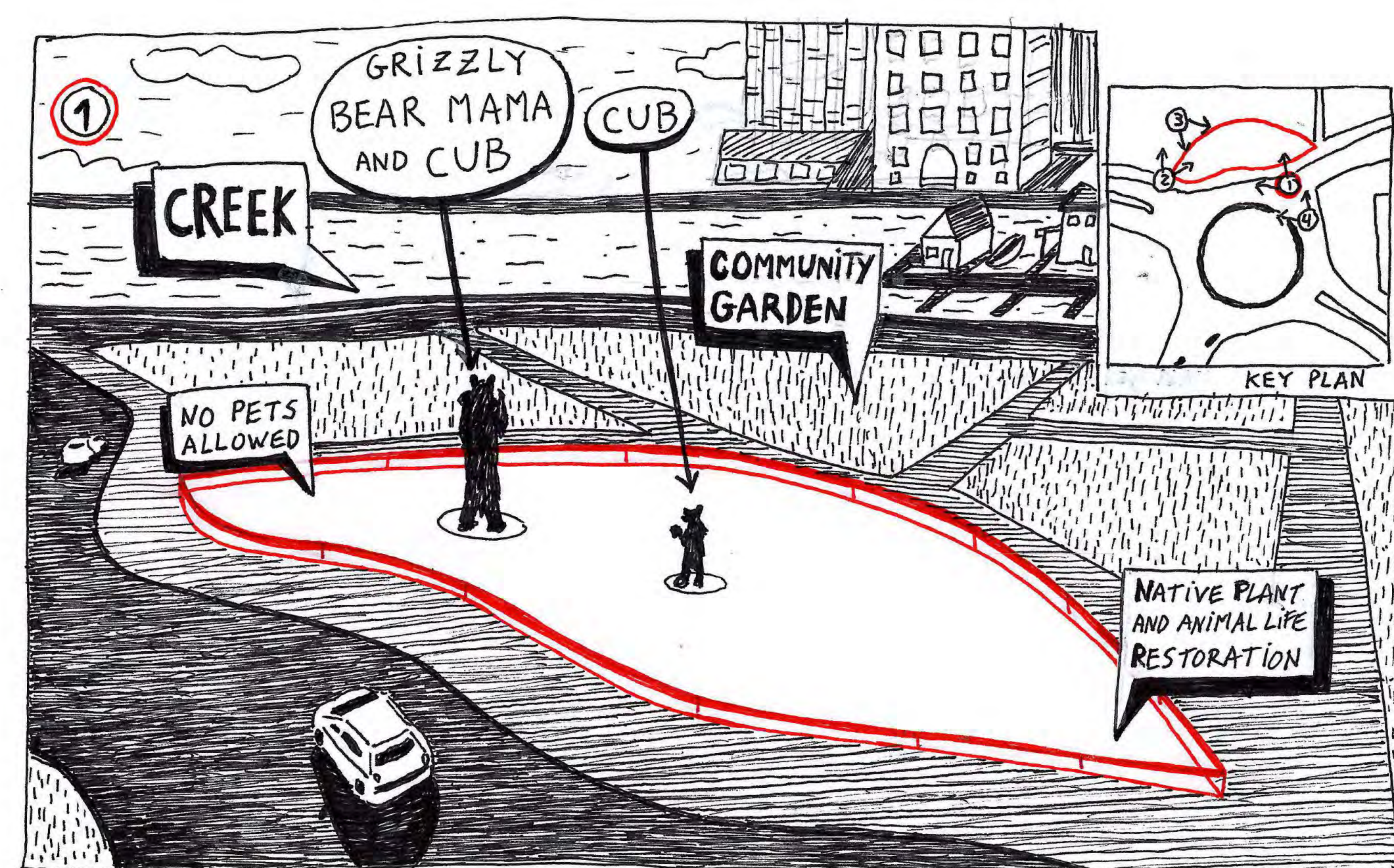
Is a sculptural tribute to the original wildlife present within the area known today as Mission Creek Park.

In 1871, famed naturalist John Muir wrote, "Bears are made of the same dust as we, and breathe the same winds and drink of the same waters. And whether he at last goes into our stinky heaven or not, he has terrestrial immortality."

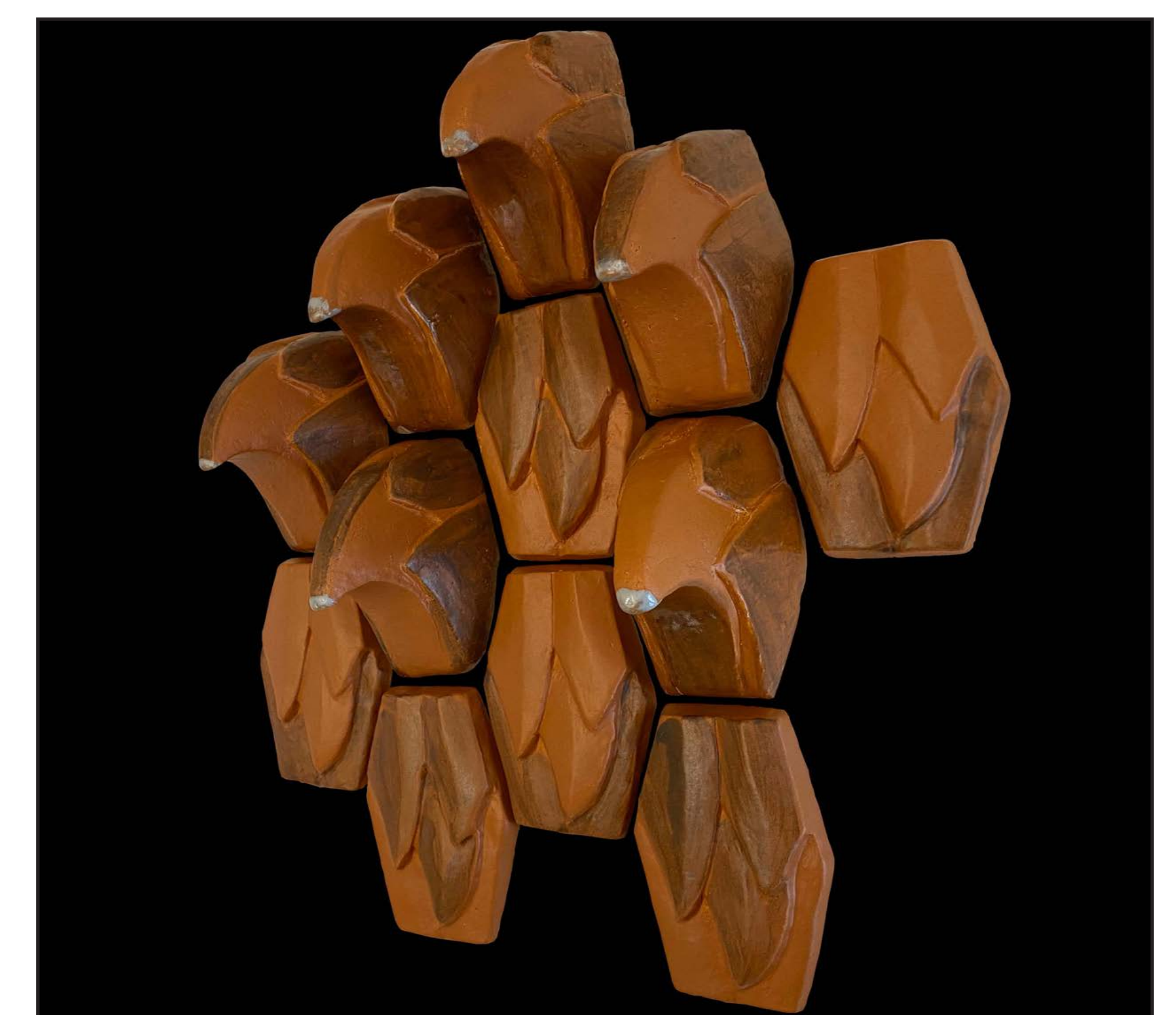
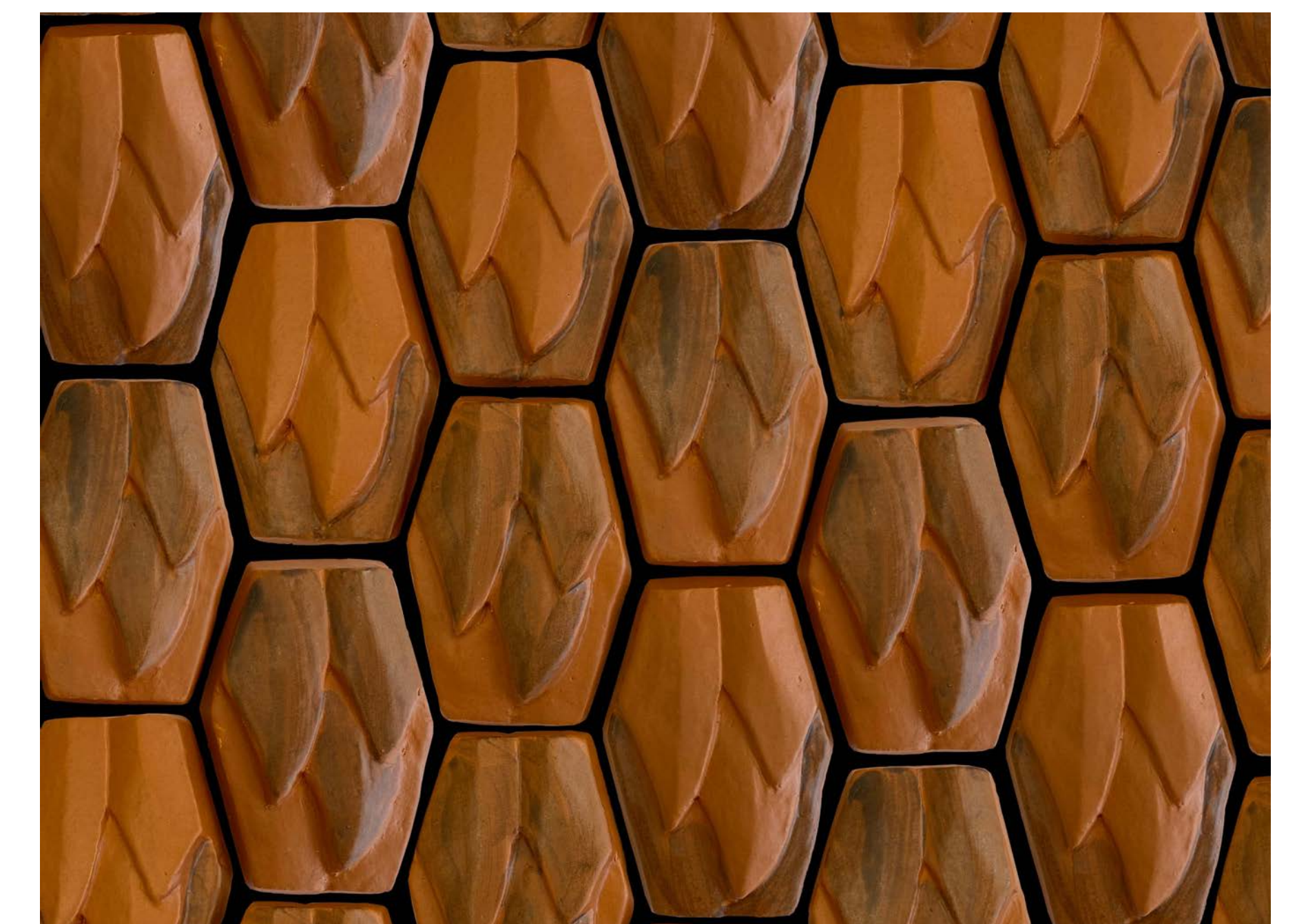
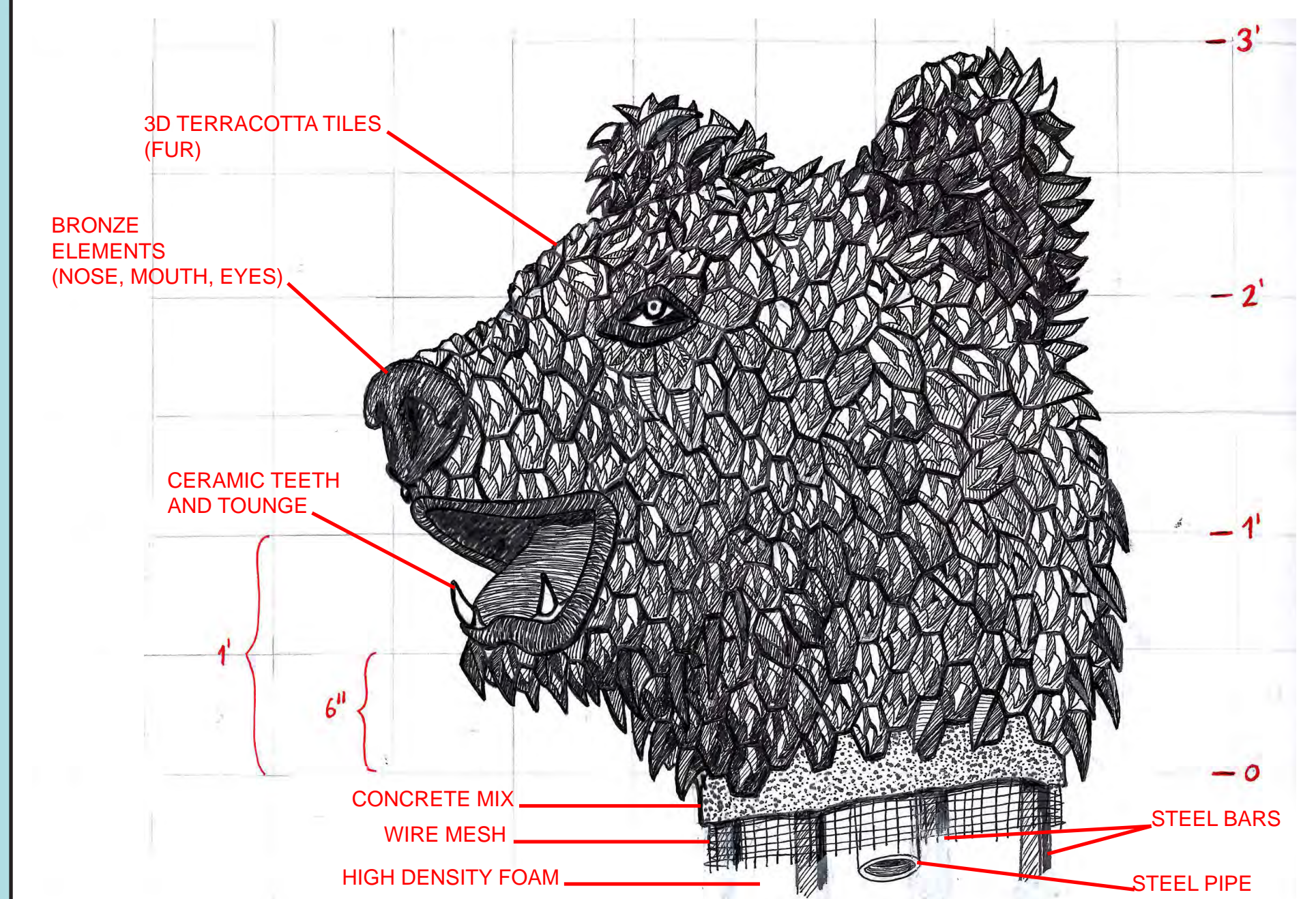
To this day, the Grizzly Bear continues to be one of California's most visible and enduring symbols, adorning both the state flag and seal. However, by the time the California Grizzly Bear is designated official state animal, in 1953, it had been extinct in the state for over two decades.

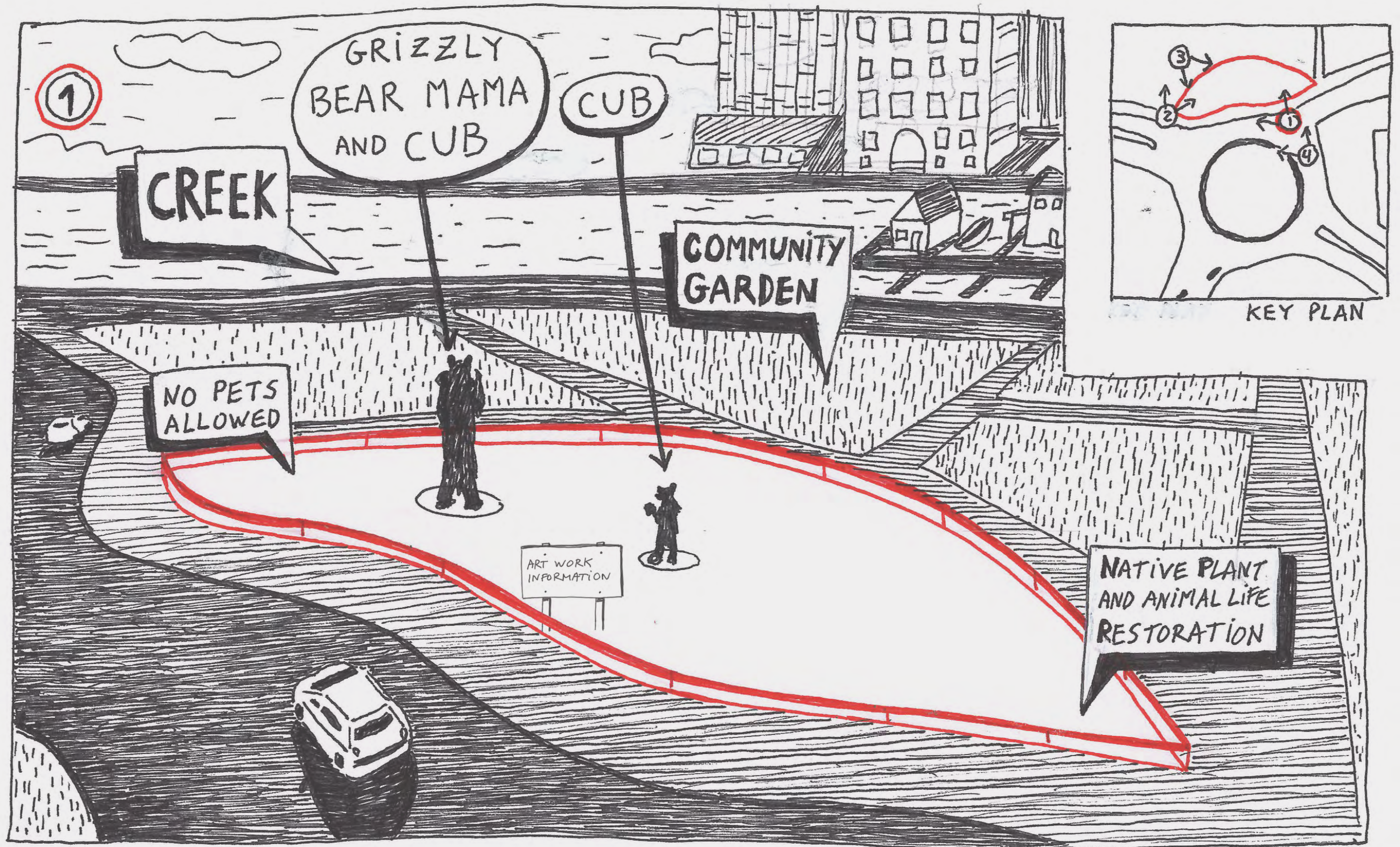
With these larger-than-life Grizzlies (150% actual size), I aim to call upon the kind of proximity the animal world shared with the human world at the time of the Ohlones, pre-California. This relationship would be underscored by the Native plant and animal life restoration area within which the sculptures exist.

I also aim to remind our contemporaries that the survival of even such a majestic and powerful animal, as the Grizzly Bear, is dependent foremost on the actions of us humans. The tender love and fierce protection of the bear mother alone is not sufficient to guarantee the survival of her cubs.



● PROPOSED ARTWORK LOCATION
 DIMENSIONS: MAMA BEAR IS 13½ FEET TALL
 CUB IS 6 FEET TALL





ARTWORK SIGNAGE IN THE PARK WOULD INCLUDE A Q.R. CODE THAT GIVES THE PARK GOER- VIA THEIR CELL PHONE- ACCESS TO A DATA BANK WHERE NATIVE INDIGENOUS CALIFORNIA LANGUAGE SPEAKERS SHARE WITH US THE WORDS FOR "GRIZZLY BEAR" OR "GRIZZLY BABY" IN THEIR NATIVE TONGUE.



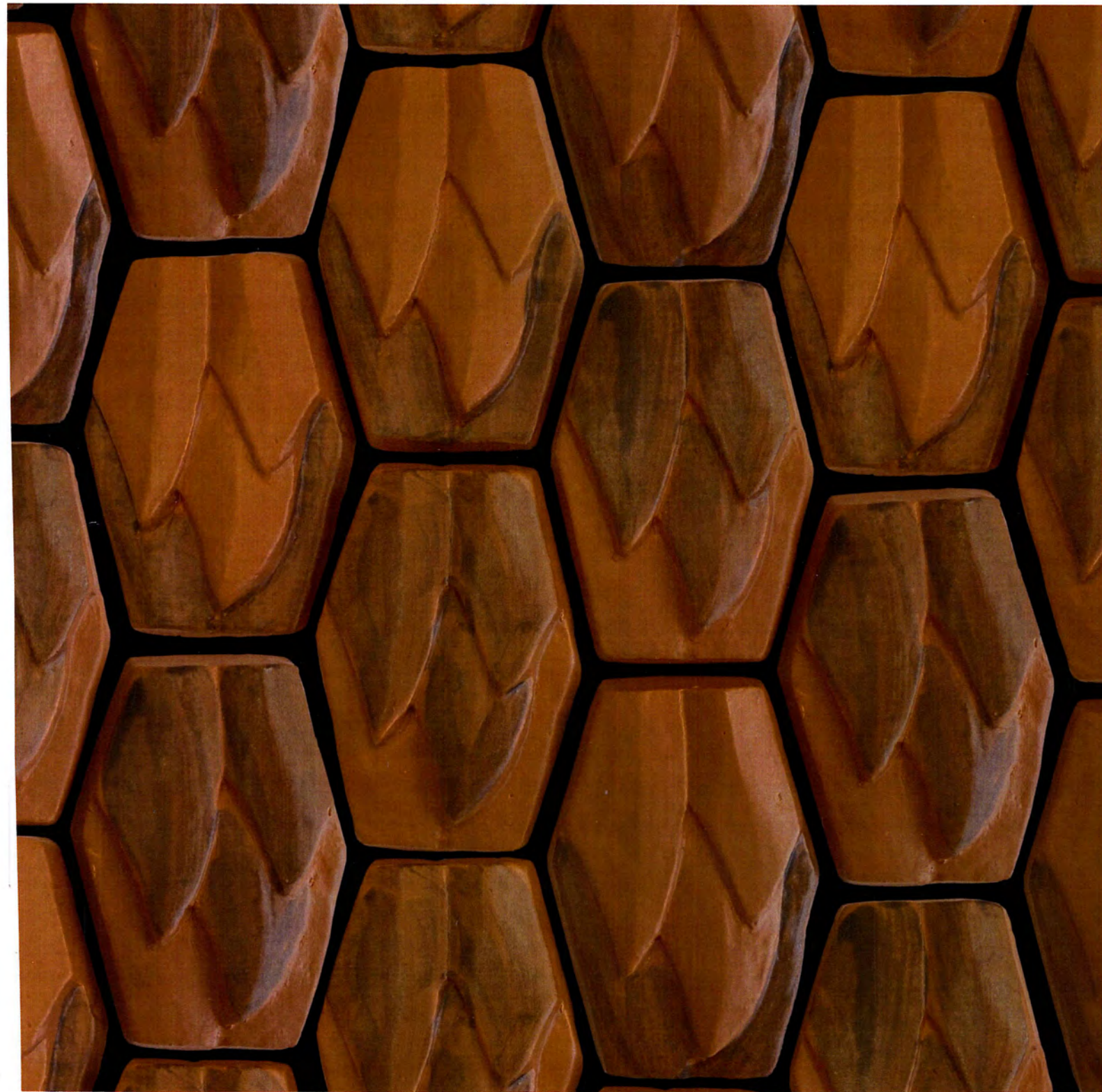
405 CM
APROX: 13 1/2 FEET TALL
412 CM



5'9"



A SERIES OF HEXAGONAL TILES OF VARYING LENGTHS WILL BE DESIGNED TO REPLICATE THE VARIATIONS THAT ARE NATURALLY PRESENT ON THE GRIZZLY'S FUR. THE TIPS ARE GLAZED IN SILVER AND TONAL VARIATION WILL COME FROM THE TERRACOTA



CLAY ITSELF. ASIDE FROM THE TONAL VARIATION PROVIDED BY THE CLAY, GLAZES WILL ALSO BE APPLIED TO SPECIFIC TILES ACCORDING TO THE PLACE THEY WILL OCCUPY ON THE BEAR'S BODY.



THE THREE BEARS' PAWS WILL BE RENDERED IN BRONZE - AS WILL THEIR NOSES, MOUTHS, EYES AND NIPPLES.

THE BRONZES WILL BE PATINAED TO FURTHER APPROXIMATE THE ANIMAL'S NATURAL COLORS.



THE BRANCHES WITH LEAVES THAT THE MAMMA GRIZZLY IS EATING ARE ALSO CAST IN BRONZE WITH PATINAS WHICH REPRODUCE NATURALISTIC COLORS.

(CLAWS, MOUTH AND LEAVES ARE CAST TOGETHER FOR STRENGTH)

Public Comment via WebEx:

- Navigate to the hand icon in the lower right corner.
- Raise your hand to be placed in the queue.
- You will hear a beep and you will be prompted to speak.



Public Comment via Phone:

- Dial 415-655-0001
- Enter the Access Code: 2490 467 8072
- When prompted, dial ‘*’ then ‘3’ to be added to the speaker line.
- Your line will be unmuted and you will hear, “*Your line has been unmuted.*” This is your time to speak.

Once your time is up, you will be put back on mute. Participants who wish to speak on other public comment periods may stay on the line and listen for the next public comment opportunity. For further inquiries regarding Commission matters, email art-info@sfgov.org.

Item 5: **Mission Park Extension**

Discussion and Possible Action: to approve artist Rigo 23 (Ricardo Gouveia) and proposal for the Mission Creek Park Extension Public Art Project, as recommended by the artist review panel.

Discussion and Possible Action: to authorize the Director of Cultural Affairs to enter into contract with artist Rigo 23 (Ricardo Gouveia) for an amount not to exceed \$535,000 for design, fabrication, transportation and installation consultation of an artwork for the Mission Creek Park Extension Public Art Project.

Item 6: Alameda Creek Watershed

Alameda Creek Watershed Center



Muwekma Ohlone Tribe
of the
San Francisco Bay Area





ACWC 2D Artwork Purchase Goals

- Highlights the Watershed's distinct natural landscape.
- Provides local benefit through the direct purchase of an artwork by an artist who currently resides in, and/or has a meaningful connection to, the Alameda Creek Watershed and surrounding region.
- Size of unframed artwork should be no larger than 84 inches x 60 inches, and no smaller than 60 inches x 48 inches.\.

Budget

- The purchase price of the individual artwork should not exceed \$10,000, and be appropriate to the scale of the artwork, medium, as well as the market rate for the artist's work.
- The artist whose original artwork is selected for purchase will be responsible for the delivery of the artwork to the framer/installer in Oakland, CA. Framing and installation costs will be the responsibility of the Arts Commission.



**ALAMEDA CREEK WATERSHED
2D ARTWORK REVIEW PANEL SUMMARY**

MEETING DATE

January 10, 2022

VOTING SELECTION PANELISTS

Mary Chou, Senior Public Art Program Manager, San Francisco Arts Commission
Amy Dawson, Community Liaison Manager, SFPUC
Connie DeGrange, Community Representative
Paul De Freitas, Architect, DPW
Blair Randall, Arts and Education Program Manager, PUC
Carla Schultheis, Watershed and Environmental Improvement Program Manager, SFPUC

PROCESS

Round One:

Arts Commission staff presented the qualifications of 15 artists selected from the Alameda Creek Watershed 2D Artwork Purchase Request for Available Artworks (RFAA). “Yes/No” majority votes based on the criteria of Artistic Excellence and Appropriate to Goals of the Project and Civic Art Collection yielded 8 artists/artworks to move to Round Two.

Round Two:

The Artist Selection Panel discussed the qualifications of the semi-finalists and scored each artist on the following criteria (1= low score):

- Artistic Excellence (1-10)
- Appropriate to Project Goals (1-10)

Round Two voting yielded 1 artwork to recommend to the Arts Commission.

RESULTS

The following artists received the highest score:

Adrian Arias, *Traveler*, 2022 99

ARTS COMMISSION APPROVAL

Discussion and Possible Action: to approve *Traveler*, 2022 (51” x 71”, mixed media on paper, \$4,000) by Adrian Arias, a two-dimensional artwork for purchase and display at the Alameda Creek Watershed Center, as recommended by the artist review panel.



Adrian Arias
Traveler (2022)
51" x 71"
Mixed media on paper
\$4,000

Public Comment via WebEx:

- Navigate to the hand icon in the lower right corner.
- Raise your hand to be placed in the queue.
- You will hear a beep and you will be prompted to speak.



Public Comment via Phone:

- Dial 415-655-0001
- Enter the Access Code: 2490 467 8072
- When prompted, dial ‘*’ then ‘3’ to be added to the speaker line.
- Your line will be unmuted and you will hear, “*Your line has been unmuted.*” This is your time to speak.

Once your time is up, you will be put back on mute. Participants who wish to speak on other public comment periods may stay on the line and listen for the next public comment opportunity. For further inquiries regarding Commission matters, email art-info@sfgov.org.

Item 6: **Alameda Creek Watershed**

Discussion and Possible action: to approve *Traveler*, 2022 (51" x 71", mixed media on paper, \$4,000) by Adrian Arias, a two-dimensional artwork for purchase and display at the Alameda Creek Watershed Center, as recommended by the artist review panel.

**Item 7: Southeast Community Center at
1550 Evans – 2D Artwork Program**

The New Southeast Community Center at 1550 Evans
Client: San Francisco Public Utilities Commission (SFPUC)





Mildred Howard | Southeast Community Center Entrance Plaza



FIRST EXPOSURES

2021

SUMMER

VIRTUAL ARTIST RESIDENCY
WITH MILDRED HOWARD



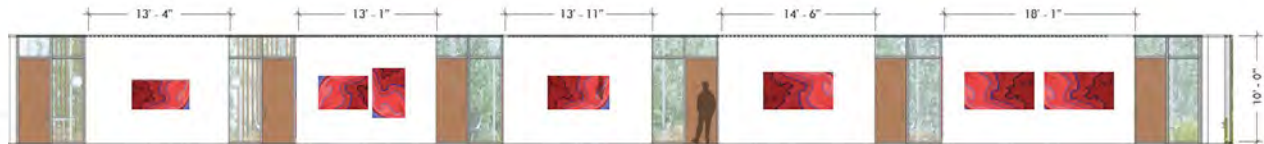
JULY 1 - AUGUST 5
TUES & THURS
2 PM - 4 PM
PAID ARTIST RESIDENCY
FOR BAY AREA
PHOTOGRAPHERS
AGES 15 - 21

APPLY BY
JUNE 15

JOIN FIRST EXPOSURES' ARTIST RESIDENCY WITH ARTIST & MENTOR MILDRED HOWARD THIS SUMMER TO EXPLORE & EXPAND YOUR ARTISTIC VISION ON COMMUNITY, CHANGE, & THE IMPACTS OF THE PANDEMIC USING PHOTOGRAPHY. ARTISTS WILL RECEIVE A STIPEND & HAVE THEIR WORK EXHIBITED.

FIRSTEXPOSURES.ORG/RESIDENCY
INFO@FIRSTEXPOSURES.ORG

Southeast Community Center 2D Artwork Program



Southeast Community Center

2D Artwork Themes

- **Celebrating Cultural Legacy, Diversity, and Activism**
 - Preserving History of BVHP
 - Celebrating the present and future BVHP
 - Acknowledging History of SFPUC and government actions in the neighborhood
 - Recognition of civic engagement and advocacy that led to the development of the community center
- **Historical Landmarks and Land Use**
 - Recognition of the Ohlone people, whose land the Center is built on
- **Recognized Communal Values**
 - Community - Acknowledging the importance of community identity and legacy and connectedness.
 - Social, Racial, Environmental Justice & Equity
 - Unity/Umoja
 - Family



David Pushia, Jr., *Tai's Grandchildren*, 2021



Emilio Perez Duarte
Thrash, 2021

Frida Calvo
Radiant Joy, 2021





Juliana Martinez,
Reading, 2021



Kunta Gary,
Navigator, 2021



Michelle Zhao, *Night Market*, 2021



Miracle Hampton
Night Market, 2021



Sabrina Denman, *By the Beach*, 2021

Public Comment via WebEx:

- Navigate to the hand icon in the lower right corner.
- Raise your hand to be placed in the queue.
- You will hear a beep and you will be prompted to speak.



Public Comment via Phone:

- Dial 415-655-0001
- Enter the Access Code: [2490 467 8072](tel:24904678072)
- When prompted, dial ‘*’ then ‘3’ to be added to the speaker line.
- Your line will be unmuted and you will hear, “*Your line has been unmuted.*” This is your time to speak.

Once your time is up, you will be put back on mute. Participants who wish to speak on other public comment periods may stay on the line and listen for the next public comment opportunity. For further inquiries regarding Commission matters, email art-info@sfgov.org.

Item 7: Southeast Community Center at 1550 Evans – 2D Artwork Program

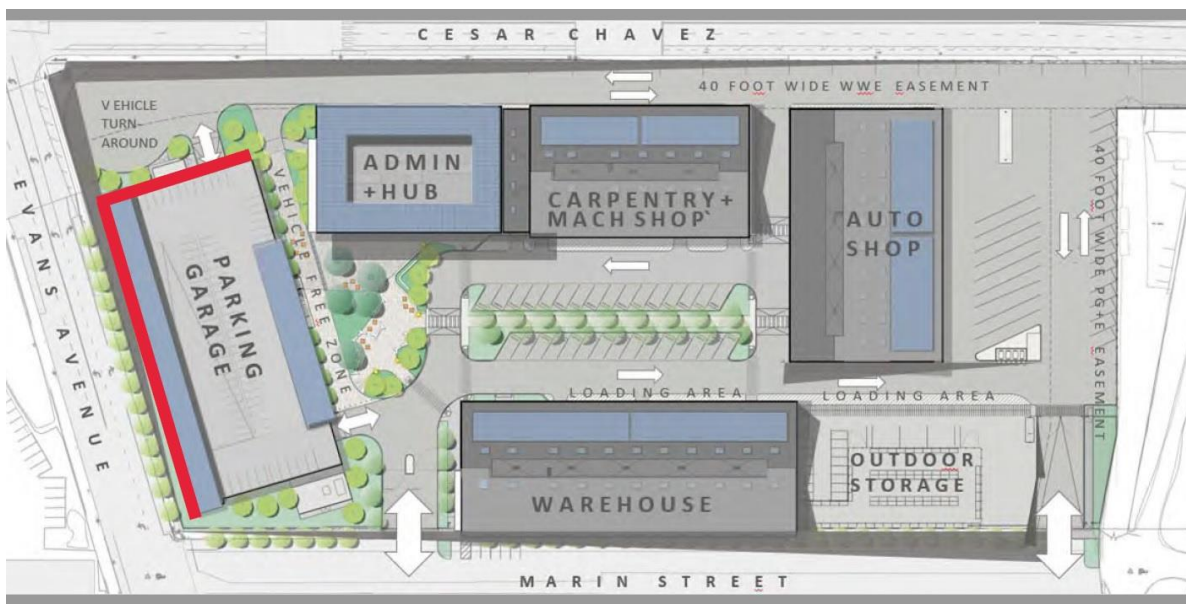
Discussion and Possible Action: to approve list of additional two-dimensional artworks for licensing, reproduction, and display at the Southeast Community Center at 1550 Evans, as recommended by the artist review panel:

- David Pushia, Jr., Tai's Grandchildren, 2021, digital reproduction on aluminum, \$500
- Emilio Perez Duarte, Thrash, 2021, digital reproduction on aluminum, \$500
- Frida Calvo, Radiant Joy, 2021, digital reproduction on aluminum, \$500
- Juliana Martinez, Reading, 2021, digital reproduction on aluminum, \$500
- Kunta Gary, Navigator, 2021, digital reproduction on aluminum, \$500
- Michelle Zhao, Night Market, 2021, digital reproduction on aluminum, \$500
- Miracle Hampton, Route 66, 2021, digital reproduction on aluminum, \$500
- Sabrina Denman, By the Beach, 2021, digital reproduction on aluminum, \$500

**Item 8: SFPUC's City Distribution Division
at 2000 Marin**

sfac san francisco arts commission

SFPUC'S CITY DISTRIBUTION DIVISION (CDD) AT 2000 MARIN ST. PUBLIC ART PROJECT PLAN



BACKGROUND (CAPITAL IMPROVEMENT PROJECT OVERVIEW)

San Francisco Public Works is currently designing a new location for the San Francisco Public Utilities Commission's (SFPUC) City Distribution Division (CDD) at 2000 Marin Street, along the Islais Creek watershed. CDD manages the City's water distribution, including maintenance of 1250 miles of water mains, 12 reservoirs and 9 pump stations. The project will replace CDD's existing location at 1990 Newcomb Avenue. The campus will include administrative offices, an auto-shop, warehouse, meter shop, and a six-story, 244,000 square foot parking garage with 570 vehicle capacity. Community green space will be built outside the administrative office by parking for thirty-five large vehicles. The administrative offices will include space for engineers, business, operations, and retail management.

ART OPPORTUNITY

In consultation with the SFPUC, the Arts Commission has identified the North and West façades of the parking garage as the optimal public art location. This is an opportunity for an artist to architecturally integrate an artwork into the two façades. The following are the approximate areas for an artwork: North façade at 43 feet high by 134 feet wide, and West façade at 43 feet high by 300 feet wide. The artwork will be highly visible along Cesar Chavez and Evans Avenue, and will constitute a monumental artwork for the surrounding Potrero Hill, Dogpatch and Islais Creek neighborhoods.

PROJECT GOAL

The goal of the project is to create a site-specific, landmark artwork that is inspired by water and reflects the activities of the SFPUC’s City Distribution Division including connecting all residences and business within the City and County with high quality, efficient and reliable water. The artwork shall also reflect the SFPUC’s mission to provide their customers with high quality, efficient and reliable water, power, and sewer services in a manner that is inclusive of environmental and community interests, and that sustains the resources entrusted to their care.

ART ENRICHMENT and ARTWORK BUDGET

Total Art Enrichment: \$3,420,000

Total Artwork Budget (artist design, fabrication, transportation and installation): \$1,859,800

An architectural credit of \$150 per square foot can be applied to the artwork in areas where the artwork replaces the existing metal cladding.

ARTIST RECRUITMENT APPROACH AND ELIGIBILITY

Arts Commission staff will issue an RFQ for this specific opportunity. Professional practicing artists residing in the United States are eligible to apply. Arts Commission staff may also select artists from other prequalified artist lists to be considered.

ARTIST SELECTION PROCESS

After the application deadline, applications will be presented to an Artist Qualification Panel consisting of one representative from the PUC, one arts professional and one SFAC staff member. The qualification panel will review and score the applications to identify the short list of qualified artists to be considered for the project opportunity.

The shortlisted artists will be presented to the CDD Headquarters at 2000 Marin Artist Review Panel consisting of one representative of the PUC, three arts professionals, one Arts Commissioner, and one stakeholder or community member. The Review Panel will identify three to four finalists who will be invited to develop conceptual site-specific proposals after attending an orientation session with the project team and key stakeholders. These finalists will be paid an honorarium of \$4,000 for development of a proposal.

The Review Panel will reconvene to consider the finalists’ proposals in an interview format and will select one artist for the project for recommendation to the Art Commission.

COMMUNITY INVOLVEMENT

- A community representative or stakeholder will serve on the Review Panel and will participate in the Artist Orientation
- The finalist’s proposals will be on display for public comment near the project site and on the SFAC website for two weeks prior to the final review panel meeting
- All review panels, Visual Arts Committee (VAC) and Commission meetings are open to the public.

TIMELINE (Subject to change)

Project Plan Approval (VAC)	January 19, 2022
RFQ Issued	January 24, 2022
RFQ Deadline	March 21, 2022
Qualification Panel	March 2022
First Project Artist Review Panel	May 2022
Artist Finalist Orientation	May 2022
Finalist Proposals Due	July 2022

Final Project Artist Review Panel
VAC Approval
Arts Commission Approval
Artist Under Contract

August 2022
August 17, 2022
September 21, 2022
January 2023

FURTHER INFORMATION

Contact Zoe Taleporos, Public Art Project Manager at (415)252-2243 or by email at zoe.taleporos@sfgov.org.

APPROVED BY SFPUC AND SFAC:



1/18/2022

Ronnie Versher, Jr.
Director, Community Benefits, External Affairs
San Francisco Public Utilities Commission

Date

DocuSigned by:

EB3B6364235E4AA

1/18/2022

Joanne Lee
Deputy Director of Programs
San Francisco Arts Commission

Date

NEW CDD HEADQUARTERS AT 2000 MARIN STREET

CDR PHASE 1 PRESENTATION | 11.15.2021



Services of the San Francisco Public Utilities Commission

WHO IS CDD...SFWD...WATER!

- Potable, recycled, groundwater, auxiliary
- 1250 miles of water mains
- 15 miles of pipe replaced per year
- 12 reservoirs
- 9 pump stations
- 176,000 water meters





CAMPUS LOCATION + CONTEXT

NEW CDD HEADQUARTERS



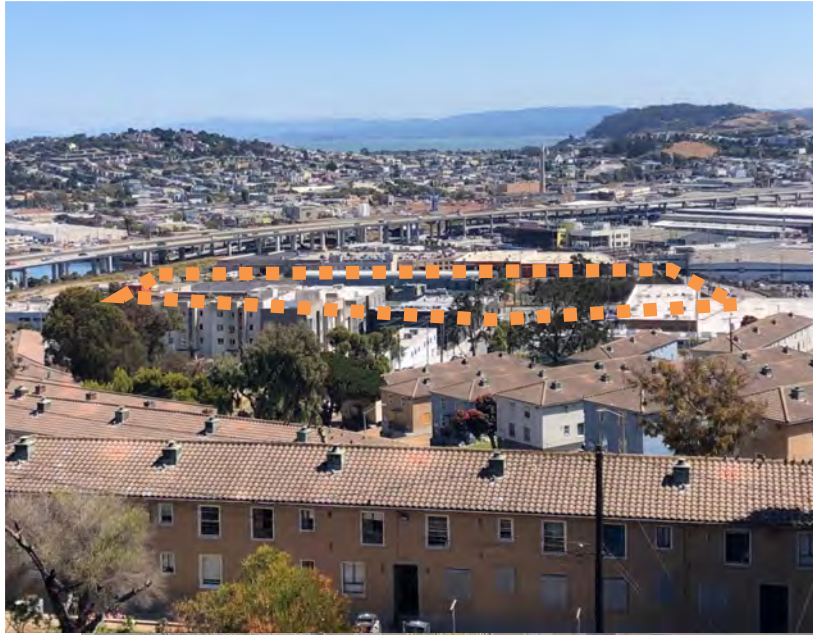
NEW CDD HEADQUARTERS



VICINITY | A SERIES OF MUNICIPAL OPERATIONS YARDS ALONG CESAR CHAVEZ



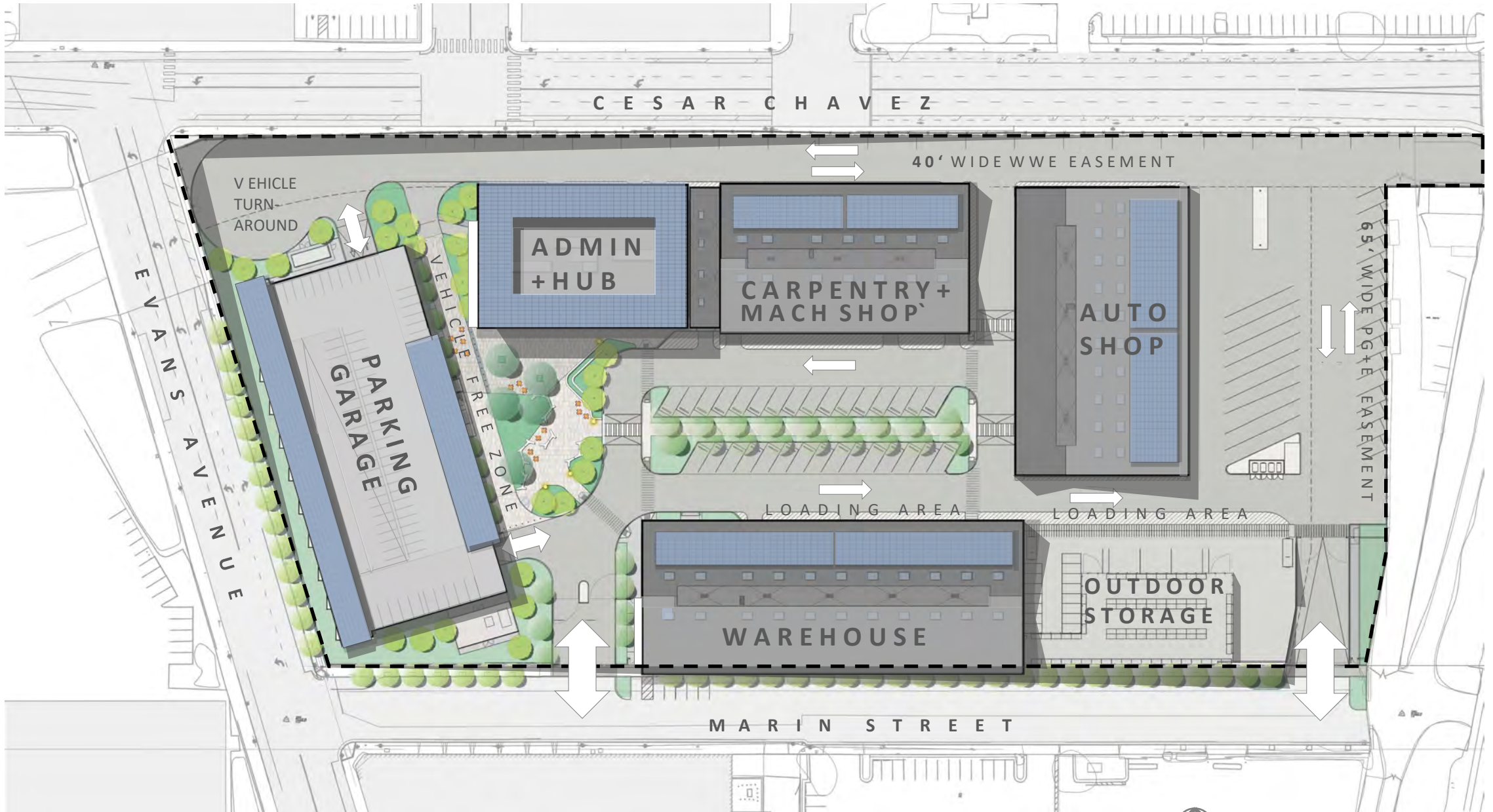
SITE | 2000 MARIN STREET



VICINITY | VIEW SOUTH FROM POTRERO HILL



VICINITY | VIEW WEST FROM 280





CAMPUS DESIGN: VIEWS

NEW CDD HEADQUARTERS



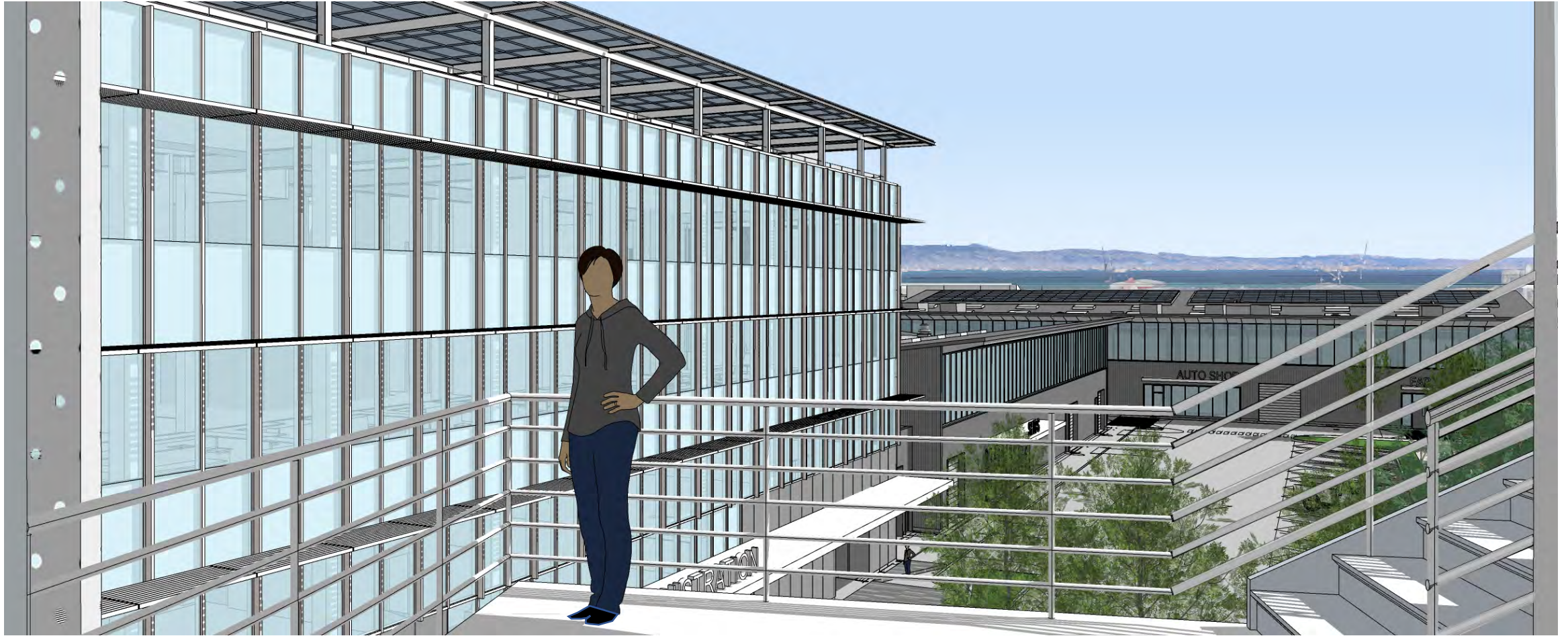
CAMPUS VIEW | MAIN ENTRY GATE + METER SHOP PICK-UP





CAMPUS VIEW | ADMIN BUILDING ENTRY FROM CAMPUS QUAD





CAMPUS VIEW | MAIN STAIR AT PARKING GARAGE TOWARDS CAMPUS QUAD





CAMPUS VIEW | LOOKING NORTHWEST TOWARDS POTRERO HILL





CAMPUS VIEW | LOOKING SOUTHWEST ALONG CESAR CHAVEZ ST.





CAMPUS VIEW | LOOKING WEST AT CESAR CHAVEZ





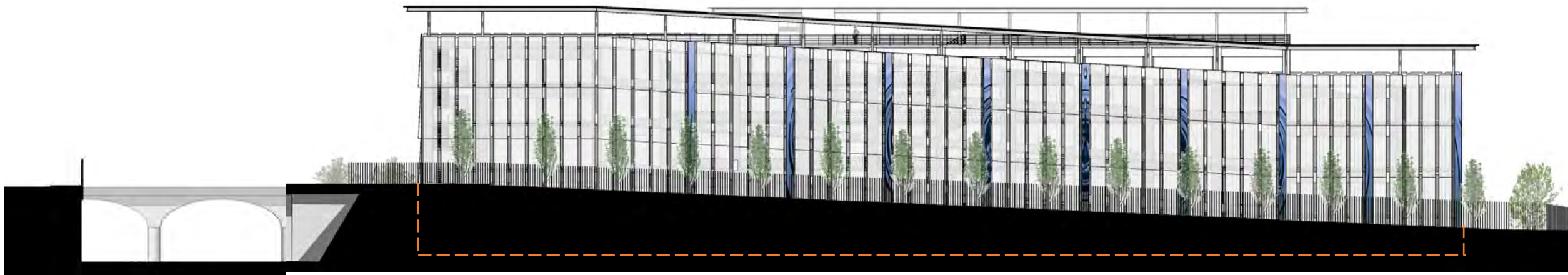
CAMPUS VIEW | LOOKING EAST AT CESAR CHAVEZ/EVANS INTERSECTION





PARKING STRUCTURE EAST ELEVATION | FACING CAMPUS





PARKING STRUCTURE WEST ELEVATION | FACING EVANS AVENUE



Public Comment via WebEx:

- Navigate to the hand icon in the lower right corner.
- Raise your hand to be placed in the queue.
- You will hear a beep and you will be prompted to speak.



Public Comment via Phone:

- Dial 415-655-0001
- Enter the Access Code: [2490 467 8072](tel:24904678072)
- When prompted, dial ‘*’ then ‘3’ to be added to the speaker line.
- Your line will be unmuted and you will hear, “*Your line has been unmuted.*” This is your time to speak.

Once your time is up, you will be put back on mute. Participants who wish to speak on other public comment periods may stay on the line and listen for the next public comment opportunity. For further inquiries regarding Commission matters, email art-info@sfgov.org.

Item 8: **SFPUC's City Distribution Division at 2000 Marin**

Discussion and Possible Action: to approve the Project Plan for an artwork at SFPUC's City Distribution Division at 2000 Marin.

**Item 9: SFO: Kadish Gallery and Harlem
of the West Exhibition**





COMMUNITY/DOCUMENTARY

The history of photography has been a history of documenting the world as it is, and as it is changing. In the early days of photography, the camera was used to capture the most important events of the day, from the signing of the Declaration of Independence to the assassination of Abraham Lincoln. In the late 19th and early 20th centuries, photographers began to use their cameras to document the lives of ordinary people, and to expose the social and economic conditions of the time. This tradition of community photography has continued to this day, and it is one of the most powerful ways in which we can understand the world around us.

© 2018





1940s
Jazz band performing on stage



1940s
Street scene in front of a record shop



1940s
Group photo of a community gathering



1. Ladies and Gentlemen: Please, Ladies and Gentlemen Please
 West Public Market, 1962 (1962-1963)
 Photo by [unreadable]

2. Speaking on Stage
 West Public Market, 1962 (1962-1963)
 Photo by [unreadable]

3. May Day Parade
 West Public Market, 1962 (1962-1963)
 Photo by [unreadable]

4. Jubilee
 West Public Market, 1962 (1962-1963)
 Photo by [unreadable]

5. Market with [unreadable]
 West Public Market, 1962 (1962-1963)
 Photo by [unreadable]

6. The [unreadable]
 West Public Market, 1962 (1962-1963)
 Photo by [unreadable]

7. Young Couple at [unreadable]
 West Public Market, 1962 (1962-1963)
 Photo by [unreadable]



Keneth River, California 1964 (printed 1970)
Gary Winograd 1964-1966
printed after 1970
Collection of the City and County of San Francisco



Los Angeles International Airport 1964 (printed 1970)
Gary Winograd 1964-1966
printed after 1970
Collection of the City and County of San Francisco



1970s Living Room



1970s Living Room



1970s Dining Room

COMMUNITY/DOCUMENTARY

The collection of photographs held by the San Francisco Arts Commission and designated for exhibition in the Ruth Kadoh Gallery features fifty artworks ranging in date from 1927 to 1988. The works depict subject matter that is distinctly Californian—celebrating the unique cultural, historical, and natural features of the state while connecting it to the larger context of photographic history. The collection is divided into four groups of images that rotate annually: Community/Documentary, Natural Landscape, Built Environment, and Horizon of the West.

Works in the Community/Documentary group feature artists whose practice focuses on the human subject and the documentary method. Those in the Natural Landscape group address various approaches to photographing the topography of the California landscape. The Built Environment group depicts human intervention of the landscape, urban environments, and industry. Horizon of the West features a selection of images from the monograph and curatorial project of the same name, authored by Leneis Watts and Elizabeth Popin Silva, which chronicles the Jazz Era in the Fillmore District of San Francisco.

The other walls in this gallery feature programming from SFO Museum. These exhibitions highlight artists whose work thematically engages with the works exhibited from the SFAC collection. These pairings are intended to encourage conversation, draw connections, and highlight influence or shifting trends in the photographic medium over time.

sfac SAN FRANCISCO ARTS COMMISSION







EXIT

↑ Gates

EXIT



FIRST-GENERATION | China Dream and Suburban Chinatown
Works by Teresa Eng and Jessica Chou



EXIT

Gates





Small white caption card below the first photograph.



Small white caption card below the second photograph.



Small white caption card below the third photograph.



Welcome to Terminal 3
↑ [E] [F] Gates & International Terminal [A] [G] Gates

EXIT





Small white caption card below the first photograph.



Small white caption card below the second photograph.



Small white caption card below the third photograph.



Small white caption card below the fourth photograph.



Small white informational card below the first photograph.



Small white informational card below the second photograph.



Small white informational card below the third photograph.



Small white informational card below the fourth photograph.



Public Comment via WebEx:

- Navigate to the hand icon in the lower right corner.
- Raise your hand to be placed in the queue.
- You will hear a beep and you will be prompted to speak.



Public Comment via Phone:

- Dial 415-655-0001
- Enter the Access Code: 2490 467 8072
- When prompted, dial ‘*’ then ‘3’ to be added to the speaker line.
- Your line will be unmuted and you will hear, “*Your line has been unmuted.*” This is your time to speak.

Once your time is up, you will be put back on mute. Participants who wish to speak on other public comment periods may stay on the line and listen for the next public comment opportunity. For further inquiries regarding Commission matters, email art-info@sfgov.org.

Item 9: SFO: Kadish Gallery and Harlem of the West Exhibition

Discussion and Possible Action: to approve, as installed, the San Francisco International Airport's Kadish Gallery's Community/Documentary exhibition, and Terminal 3 Courtyard 3 Connector Project's Harlem of the West exhibition.

Item 10: **StreetSmARTS Mural Program**

STREETSMARTS

FY2017

25th Street Navigation Center



Jessica Sabogal
Our Liberation, 2017

25th Street Navigation Center



Joshua Mays
Untitled, 2017

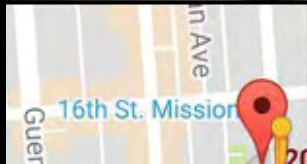
FY2018

285 Bartlett St.



Michelle Fleck
Untitled, 2017

2070 Mission St.



2070 Mission St.



Cameron Moberg
Untitled, 2018

FY2019

2400 Cesar Chavez



2400 Cesar Chavez



Jason Jagel
What It Takes to Live, 2019

3215 21st St.



3215 21st St.



Sirron Norris
Yo Soy Aqui, 2019

FY2020

3490-3498 18th St.



3490-3498 18st St.



Twin Walls Mural Co.
Untitled, 2019

1330 Polk St.



1330 Polk St.



Kara Maria
Blue into Black, 2020

FY2021

3049-3097 24st St.



3049-3097 24th St.



Nigel Sussman
Mission District in Pink, 2020

301 Church St.



301 Church St.



Amos Goldbuam
Church St. Interchange, 2021

FY2022

2894 Mission St.



2894 Mission St.



Claudio Talavera-Ballon
Los guardianes del café, 2021

Public Comment via WebEx:

- Navigate to the hand icon in the lower right corner.
- Raise your hand to be placed in the queue.
- You will hear a beep and you will be prompted to speak.



Public Comment via Phone:

- Dial 415-655-0001
- Enter the Access Code: [2490 467 8072](tel:24904678072)
- When prompted, dial ‘*’ then ‘3’ to be added to the speaker line.
- Your line will be unmuted and you will hear, “*Your line has been unmuted.*” This is your time to speak.

Once your time is up, you will be put back on mute. Participants who wish to speak on other public comment periods may stay on the line and listen for the next public comment opportunity. For further inquiries regarding Commission matters, email art-info@sfgov.org.

Item 11: **Staff Report**

Public Comment via WebEx:

- Navigate to the hand icon in the lower right corner.
- Raise your hand to be placed in the queue.
- You will hear a beep and you will be prompted to speak.



Public Comment via Phone:

- Dial 415-655-0001
- Enter the Access Code: [2490 467 8072](tel:24904678072)
- When prompted, dial ‘*’ then ‘3’ to be added to the speaker line.
- Your line will be unmuted and you will hear, “*Your line has been unmuted.*” This is your time to speak.

Once your time is up, you will be put back on mute. Participants who wish to speak on other public comment periods may stay on the line and listen for the next public comment opportunity. For further inquiries regarding Commission matters, email art-info@sfgov.org.

**Item 12: New Business and
Announcements**

Public Comment via WebEx:

- Navigate to the hand icon in the lower right corner.
- Raise your hand to be placed in the queue.
- You will hear a beep and you will be prompted to speak.



Public Comment via Phone:

- Dial 415-655-0001
- Enter the Access Code: [2490 467 8072](tel:24904678072)
- When prompted, dial ‘*’ then ‘3’ to be added to the speaker line.
- Your line will be unmuted and you will hear, “*Your line has been unmuted.*” This is your time to speak.

Once your time is up, you will be put back on mute. Participants who wish to speak on other public comment periods may stay on the line and listen for the next public comment opportunity. For further inquiries regarding Commission matters, email art-info@sfgov.org.

Item 13: Adjournment

(adjourned)