



# San Francisco Monthly STI Report

Data for July, 2024  
Report prepared August 30, 2024

Table 1. STIs among residents, July, 2024. Female syphilis cases include patients assigned as female at birth.

	2024		2023	
	month	YTD	month	YTD
Gonorrhea	403	2,622	431	2,861
Male rectal gonorrhea	128	927	123	913
Chlamydia	374	2,512	470	3,467
Male rectal chlamydia	73	511	115	980
Syphilis (adult total)	92	523	84	713
Primary & secondary	21	95	20	162
Early latent	34	191	39	310
Unknown latent	16	99	9	98
Late latent	21	138	16	143
Neurosyphilis	0	6	0	14
Congenital syphilis	0	1	0	2
Female syphilis	19	80	10	94

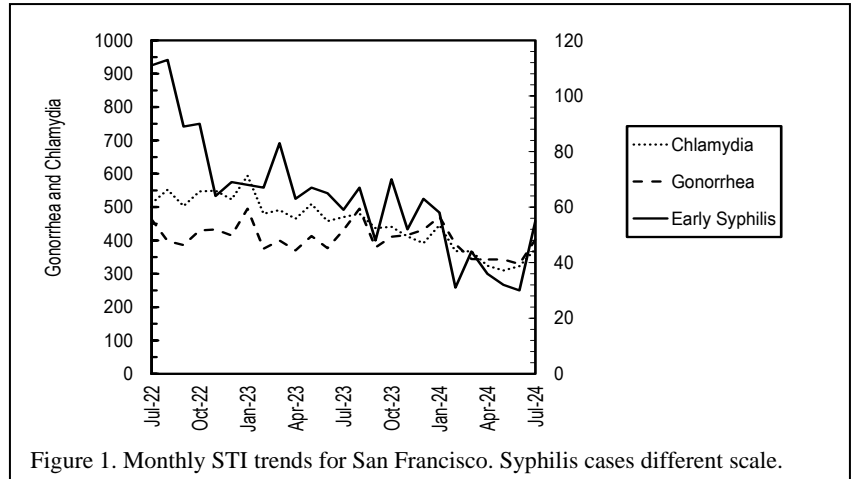


Figure 1. Monthly STI trends for San Francisco. Syphilis cases different scale.

Table 2. Selected STI cases and rates for San Francisco by age and race/ethnicity, 2024 through July only. Rates equal cases per 100,000 residents per year based on 2020 US Census Data. (Please see the Executive Summary of the [2021 San Francisco STI Annual Summary](#) for more details about the incorporation of 2020 Census data.)

	(All races)		Asian/PI		African American		Hispanic		White	
	cases	rate	cases	rate	cases	rate	cases	rate	cases	rate
<i>All ages</i>										
Chlamydia	2,512	61.6	252	18.4	316	150.2	372	58.3	530	33.3
Gonorrhea	2,622	64.3	264	19.2	231	109.8	527	82.6	943	59.2
Early syphilis	286	7.0	20	1.5	44	20.9	81	12.7	91	5.7
<i>Under 20 yrs</i>										
Chlamydia	284	395.3	19	77.1	74	1,531.4	15	83.4	43	254.4
Gonorrhea	41	57.1	3	12.2	14	289.7	5	27.8	4	23.7
Early syphilis	3	4.2	0	0.0	0	0.0	3	16.7	0	0.0

Table 3. HIV testing among City Clinic patients, July, 2024.

	2024		2023	
	month	YTD	month	YTD
Tests	353	2,351	327	2,268
Antibody positive	7	42	7	34
Acute HIV infection	0	0	0	1

Note: All statistics are provisional until the annual report is released for the year. Morbidity is based on date of diagnosis. Totals for past months may change due to delays in reporting from labs and providers.

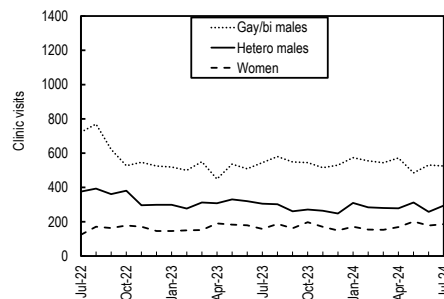


Figure 2. City Clinic visits by gender and orientation.

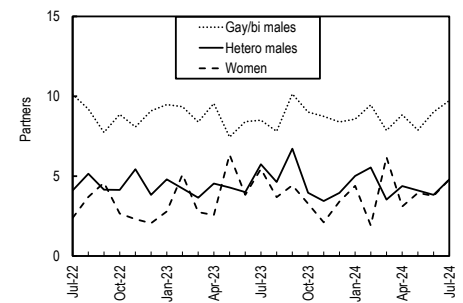


Figure 3. Average number of recent\* sex partners for City Clinic visits by gender and sexual orientation. \*Recall period is 3 months.

## SFDPH Has Moved to SF.gov

The San Francisco Department of Public Health has a new website: [sf.gov/dph](https://sf.gov/dph). This move is part of a broader citywide initiative that is helping departments make their content more locatable, accessible, and understandable.

Visit the [Disease Prevention and Control Branch](#) page for links to our three population health clinics, as well as other population health services such as immunizations, TB testing, animal bite/rabies information, and respiratory virus testing and treatment.

You will also find the new pages for [disease reporting](#), [health alerts](#), [STI](#) and [HIV](#) reports, and the [Public Health Laboratory](#), and can sign-up to receive health alerts [here](#).

You can continue to find SF City Clinic online at [sfcityclinic.org](https://sfcityclinic.org). On the SF City Clinic website, you can find important updates regarding HIV and STI screening and treatment including our citywide screening guidelines and City Clinic STI protocols, information about our services, educational materials for patients, and a provider blog.