



San Francisco Monthly STI Report

Data for April, 2024
Report prepared July 30, 2024

Table 1. STIs among residents, April, 2024. Female syphilis cases include patients assigned as female at birth.

	2024		2023	
	month	YTD	month	YTD
Gonorrhea	343	1,555	371	1,647
Male rectal gonorrhea	134	562	107	549
Chlamydia	323	1,507	465	2,033
Male rectal chlamydia	70	317	123	645
Syphilis (adult total)	78	308	101	429
Primary & secondary	11	64	23	94
Early latent	27	111	40	188
Unknown latent	11	53	15	62
Late latent	29	80	23	85
Neurosyphilis	1	5	4	13
Congenital syphilis	1	1	1	2
Female syphilis	15	48	13	60

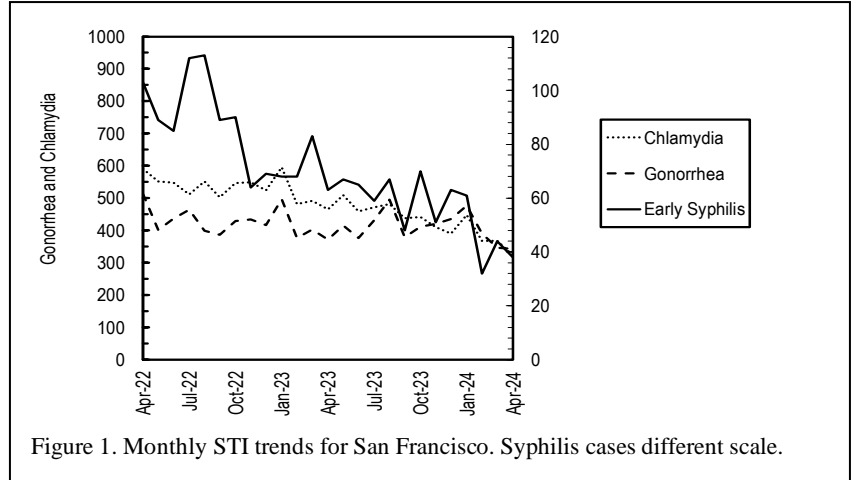


Table 2. Selected STI cases and rates for San Francisco by age and race/ethnicity, 2024 through April only. Rates equal cases per 100,000 residents per year based on 2020 US Census Data. (Please see the Executive Summary of the [2021 San Francisco STI Annual Summary](#) for more details about the incorporation of 2020 Census data.)

	(All races)		Asian/PI		African American		Hispanic		White	
	cases	rate	cases	rate	cases	rate	cases	rate	cases	rate
<i>All ages</i>										
Chlamydia	1,507	64.7	146	18.6	173	143.9	224	61.4	327	35.9
Gonorrhea	1,555	66.7	155	19.8	144	119.8	302	82.8	549	60.3
Early syphilis	175	7.5	11	1.4	27	22.5	46	12.6	61	6.7
<i>Under 20 yrs</i>										
Chlamydia	166	404.4	8	56.8	36	1,303.7	10	97.3	23	238.1
Gonorrhea	26	63.3	1	7.1	11	398.4	3	29.2	3	31.1
Early syphilis	2	4.9	0	0.0	0	0.0	2	19.5	0	0.0

Table 3. HIV testing among City Clinic patients, April, 2024.

	2024		2023	
	month	YTD	month	YTD
Tests	326	1,352	293	1,267
Antibody positive	3	19	5	17
Acute HIV infection	0	0	0	1

Note: All statistics are provisional until the annual report is released for the year. Morbidity is based on date of diagnosis. Totals for past months may change due to delays in reporting from labs and providers.

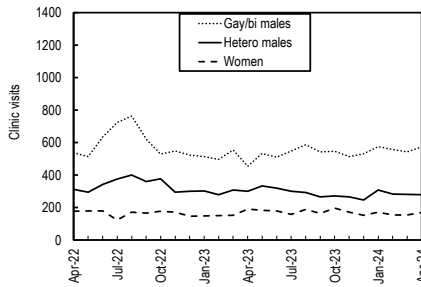


Figure 2. City Clinic visits by gender and orientation.

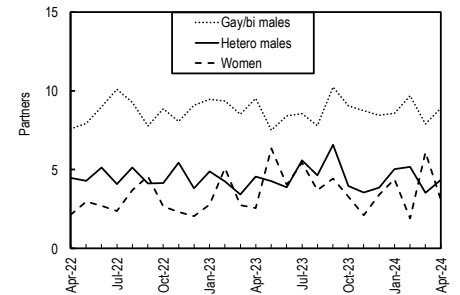


Figure 3. Average number of recent* sex partners for City Clinic visits by gender and sexual orientation. *Recall period is 3 months.

SF Health Access Points: low barrier services meeting communities where they are

The San Francisco Department of Public Health, Community Health Equity and Promotion Branch (CHEP) funds seven [Health Access Points \(HAPs\)](#) focusing on the following communities: Latin/a/e/o/x; trans women; people who use drugs (PWUD) & people experiencing homelessness (PEH); gay, bisexual, and other men who have sex with men (MSM); Asian & Pacific Islanders; young adults (ages 18-24); and Black/African Americans.

The HAPs provide low-barrier clinical and community services in welcoming spaces, free from stigma. The goal is to ensure that all San Franciscans have equitable access to high-quality HCV, HIV, and STI prevention, care & treatment services, and harm reduction & overdose prevention services. This model is based on the idea that each HAP is an expert in serving their specific population and tailors services based on the preferences and needs of its clients. Each HAP consists of a central hub and one to two associated clinical partners and community-based organizations. See below for more information:

A&PI ("LOTUS")	Black/AA ("Umoja")	Latine	MSM	PWUD ("The Lobby")	TAY	Trans women ("STAHR")

Email your questions or comments to HAP@sfdph.org

Provider STI Reporting: 628-217-6653, 628-217-6603 (fax)

www.sfcityclinic.org