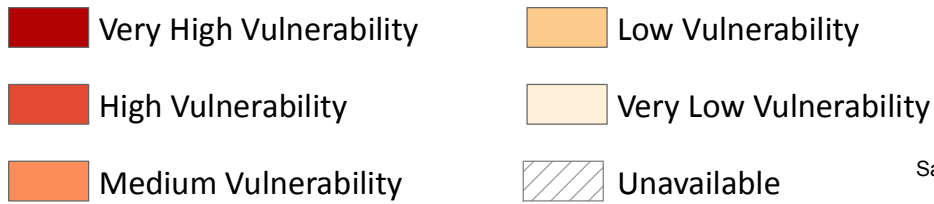
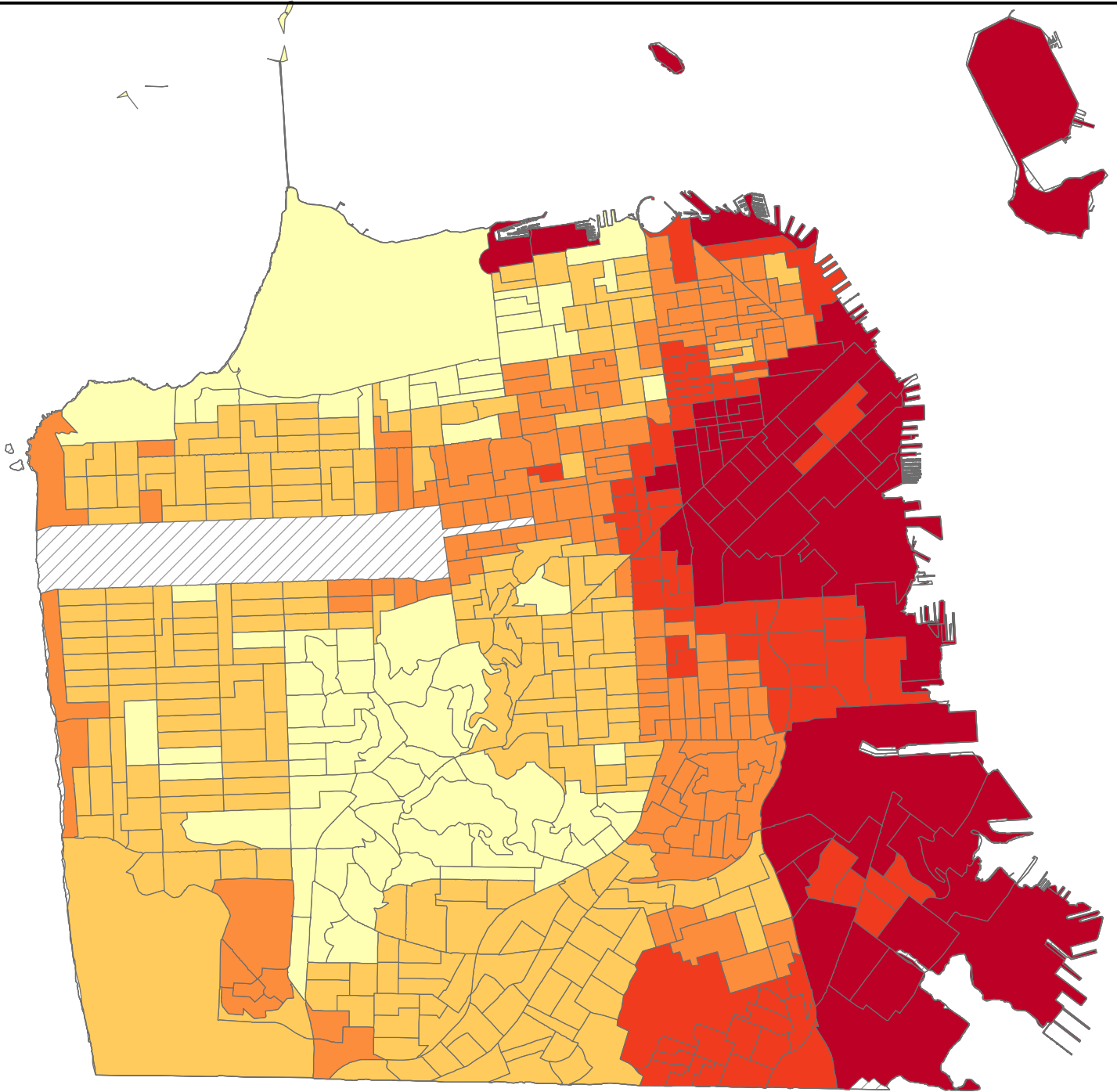


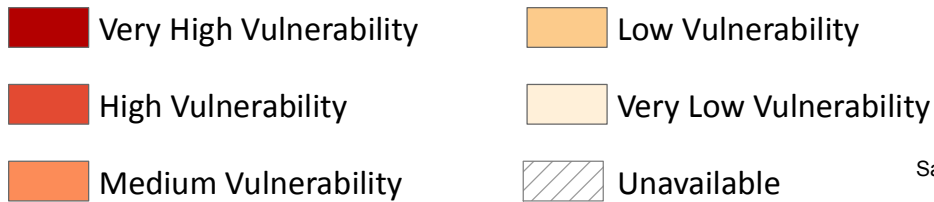
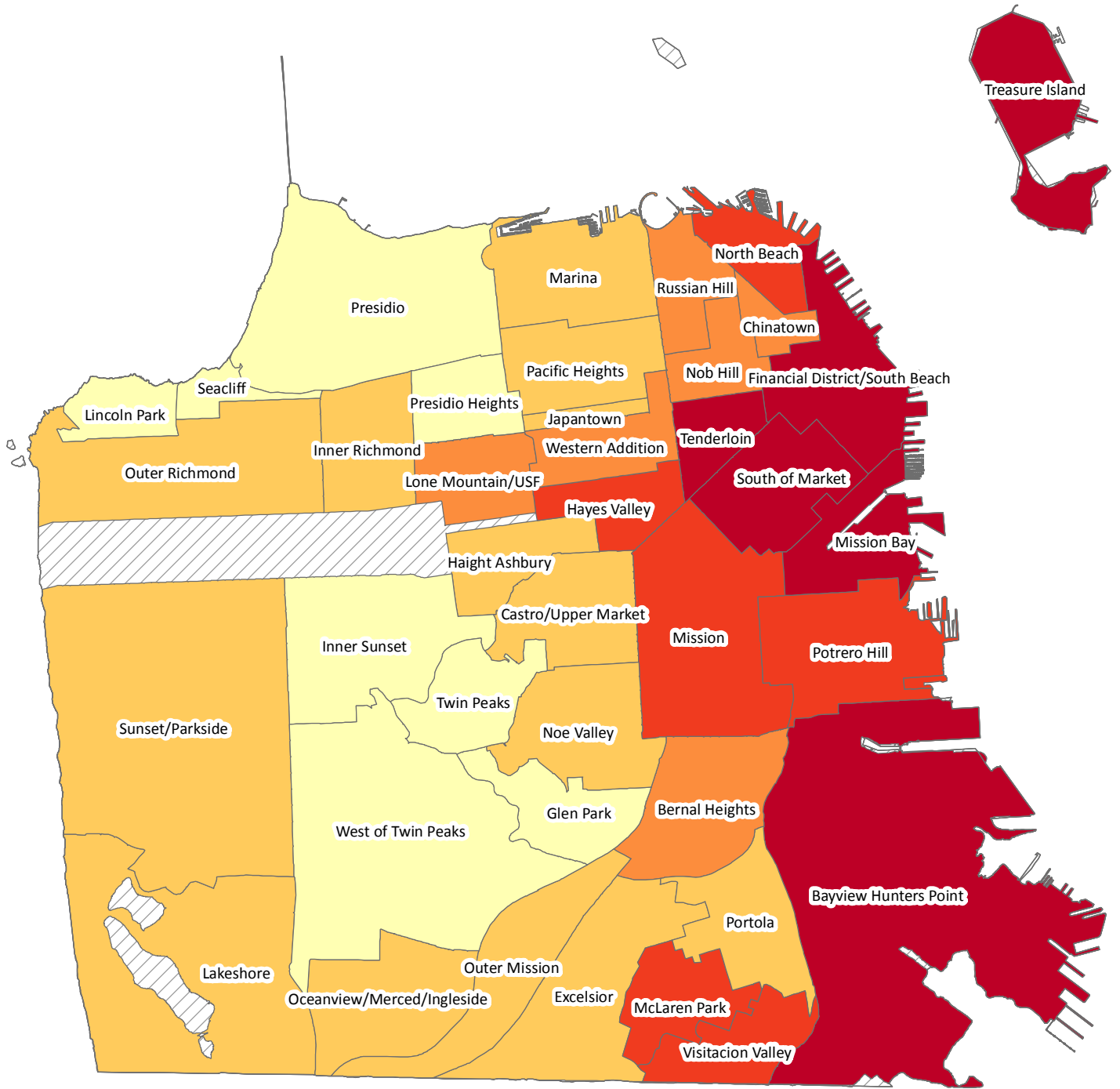
Flood Vulnerability Index, by block group

Source: SFDPH, 2015



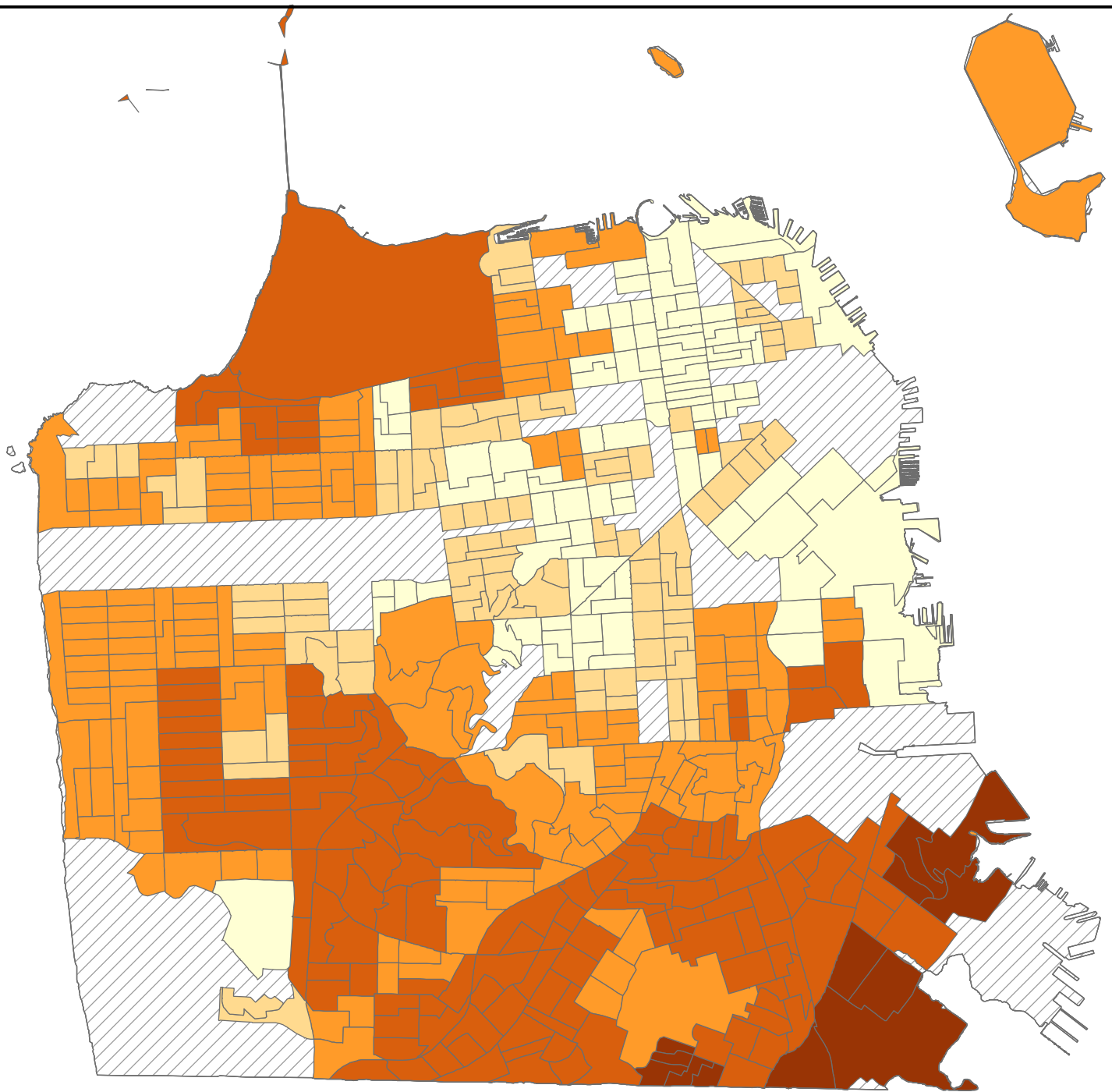
Flood Vulnerability Index, by neighborhood

Source: SFDPH, 2015



Percentage of residents aged 18-years and under, by block group

Source: American Community Survey, 2010-2012



47.45% - 24.46%

24.45% - 16.68%

16.67% - 12.72%

12.71% - 8.64%

8.63% - 2.55%

Unavailable

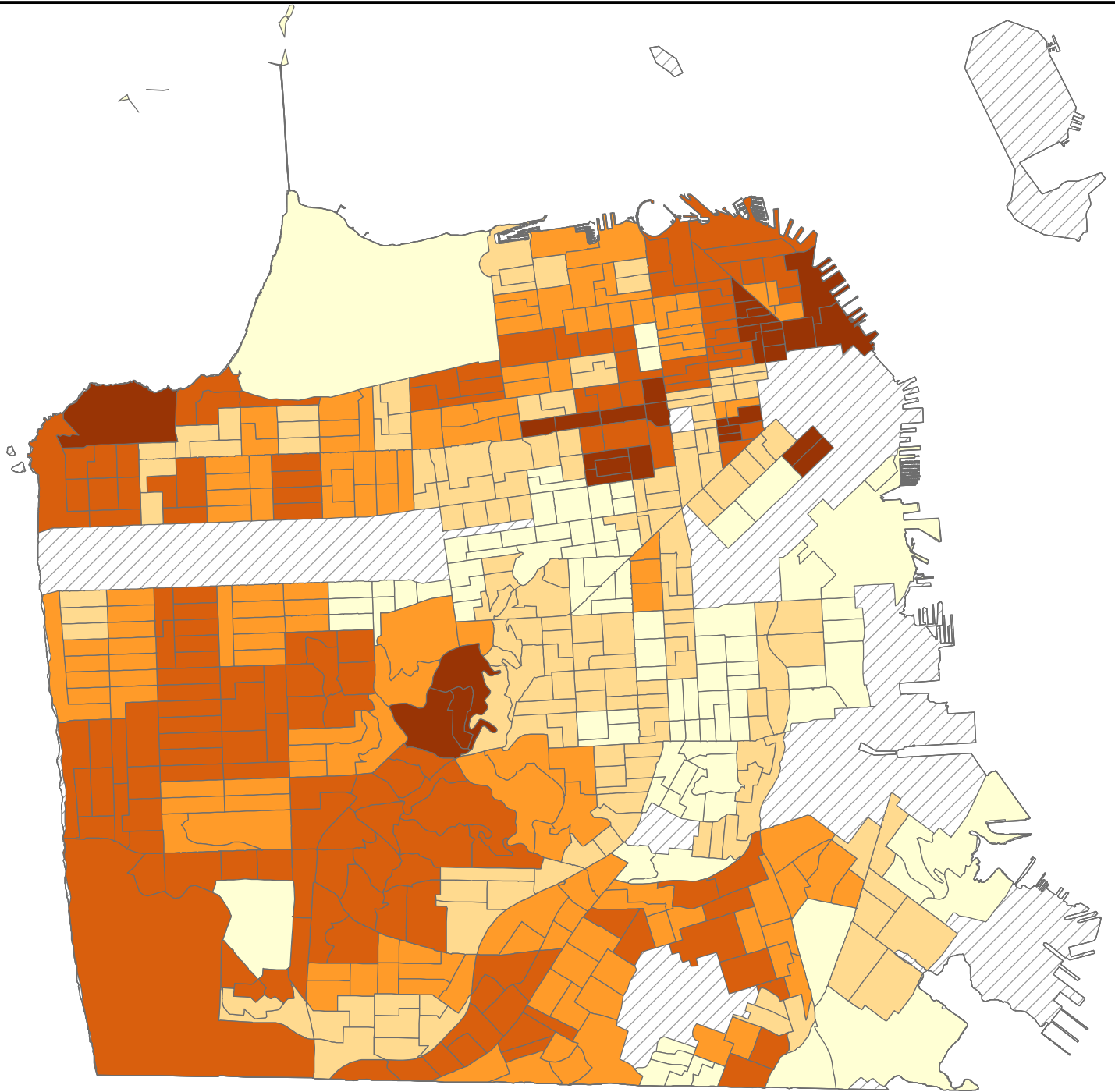
N



San Francisco Department of Public Health,
Environmental Health Branch, 2015

Percentage of residents aged 65 and over, by block group

Source: American Community Survey 2010-2012



61.00% - 24.07%

24.06% - 16.35%

16.34% - 12.56%

12.55% - 8.85%

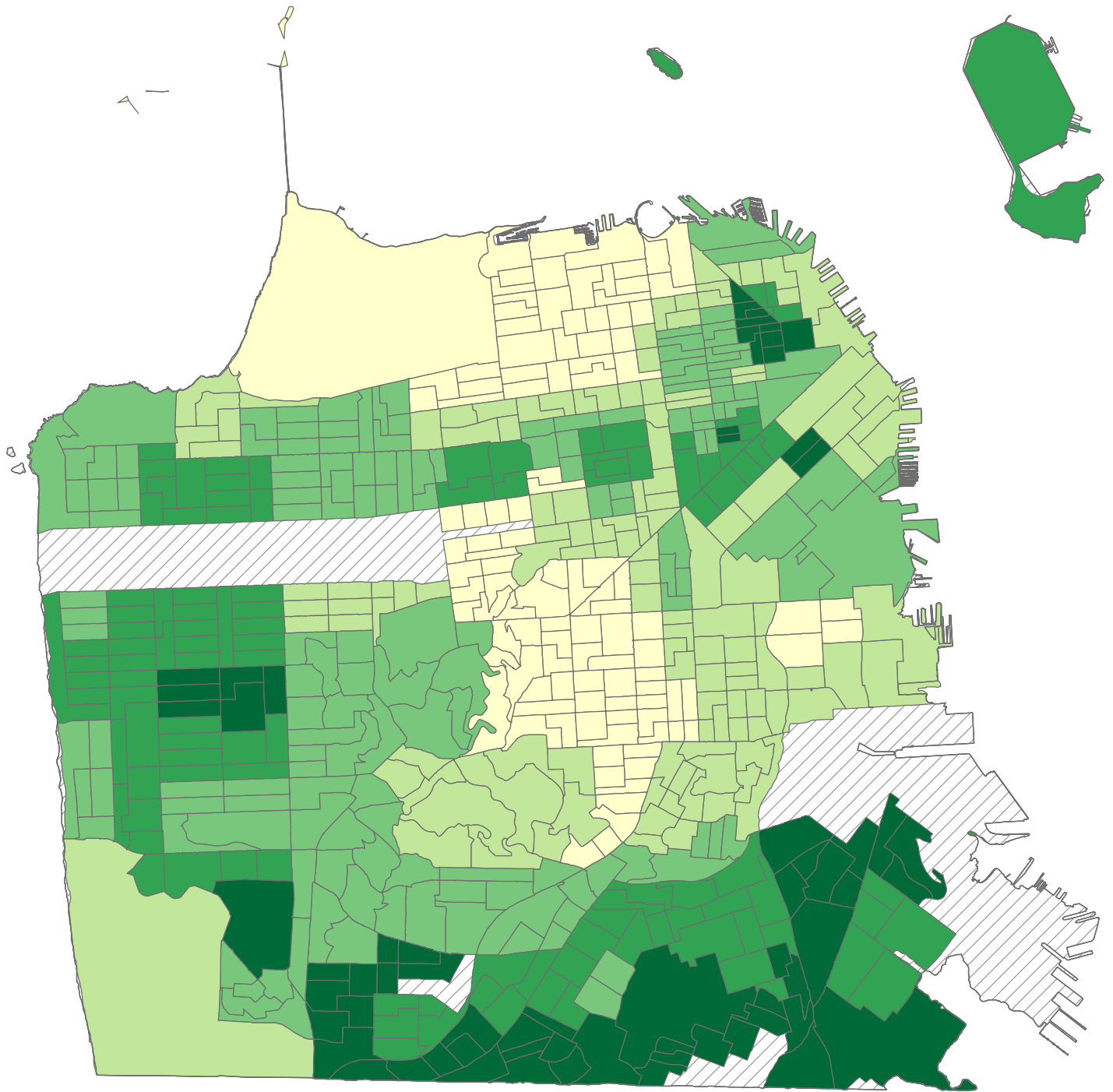
8.84% - 2.67%

Unavailable



Percentage of non-white residents, by block group

Source: American Community Survey 2010-2012



94.07% - 73.10%

73.09% - 57.27%

57.26% - 42.57%

42.56% - 27.47%

27.46% - 10.43%

Unavailable

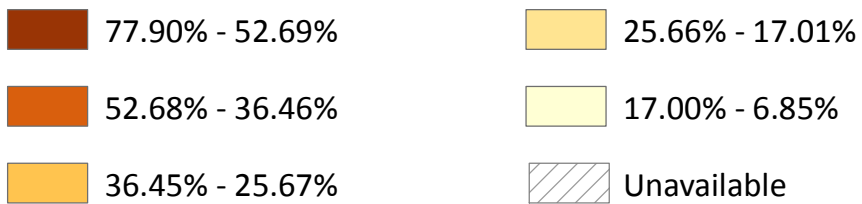
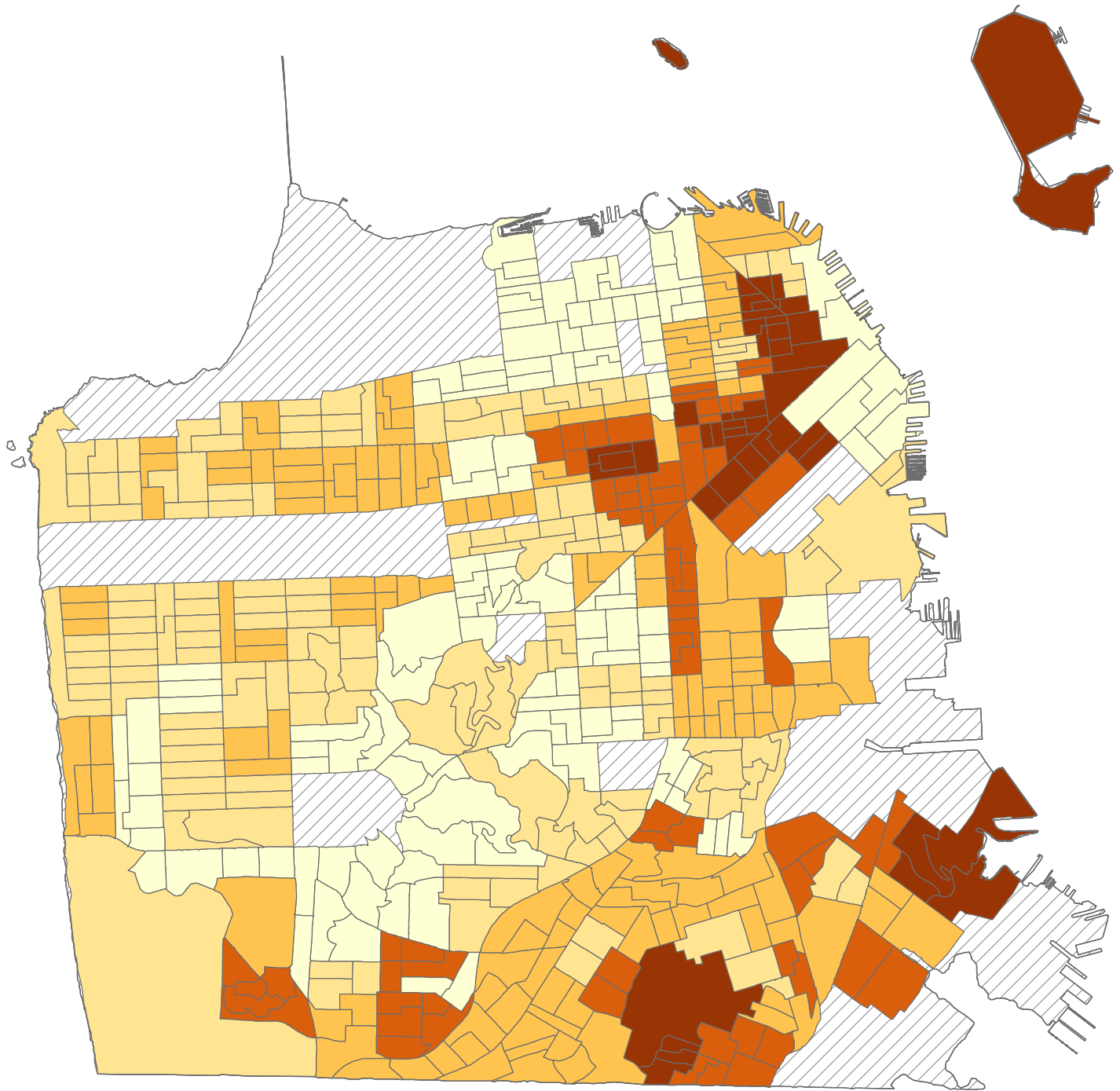
N



San Francisco Department of Public Health,
Environmental Health Branch, 2015

Percentage of households at or below 200% of the federal poverty rate, by block group

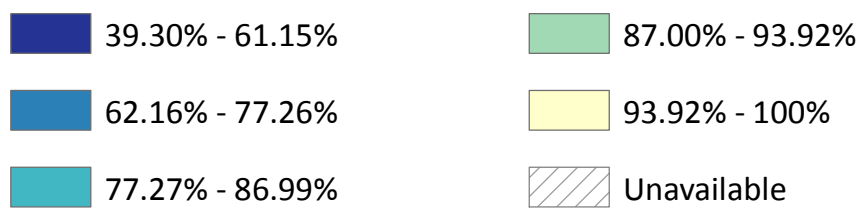
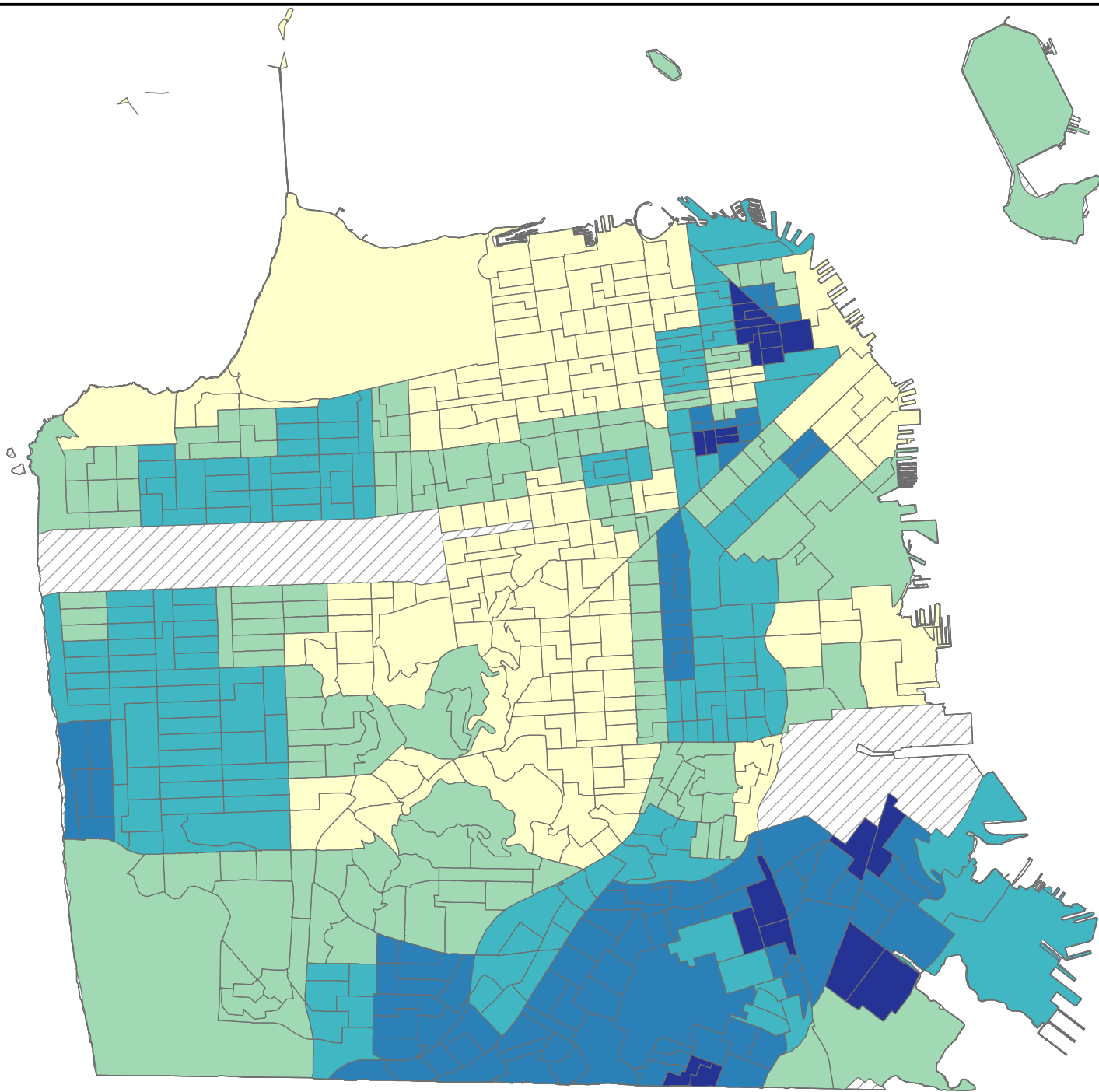
Source: American Community Survey 2010-2012



San Francisco Department of Public Health,
Environmental Health Branch, 2015

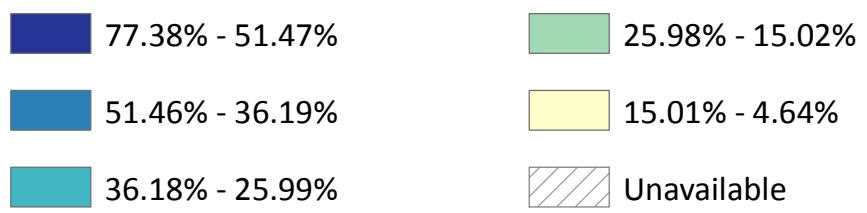
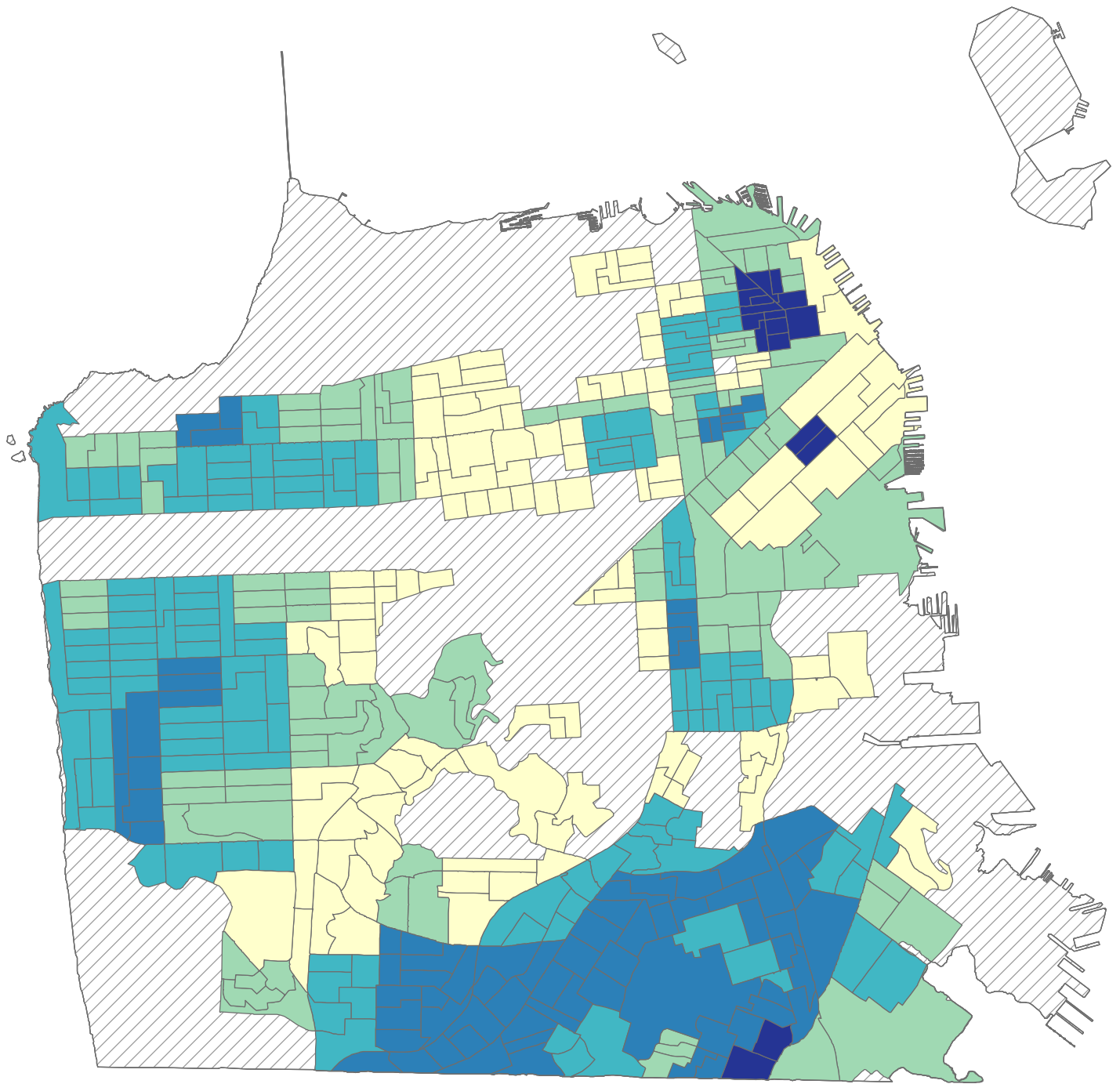
Percentage of residents over 18 without a high school degree, by block group

Source: American Community Survey 2010-2012



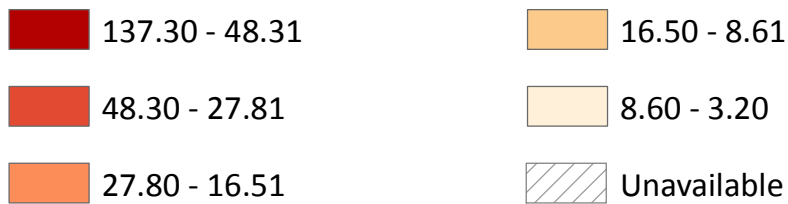
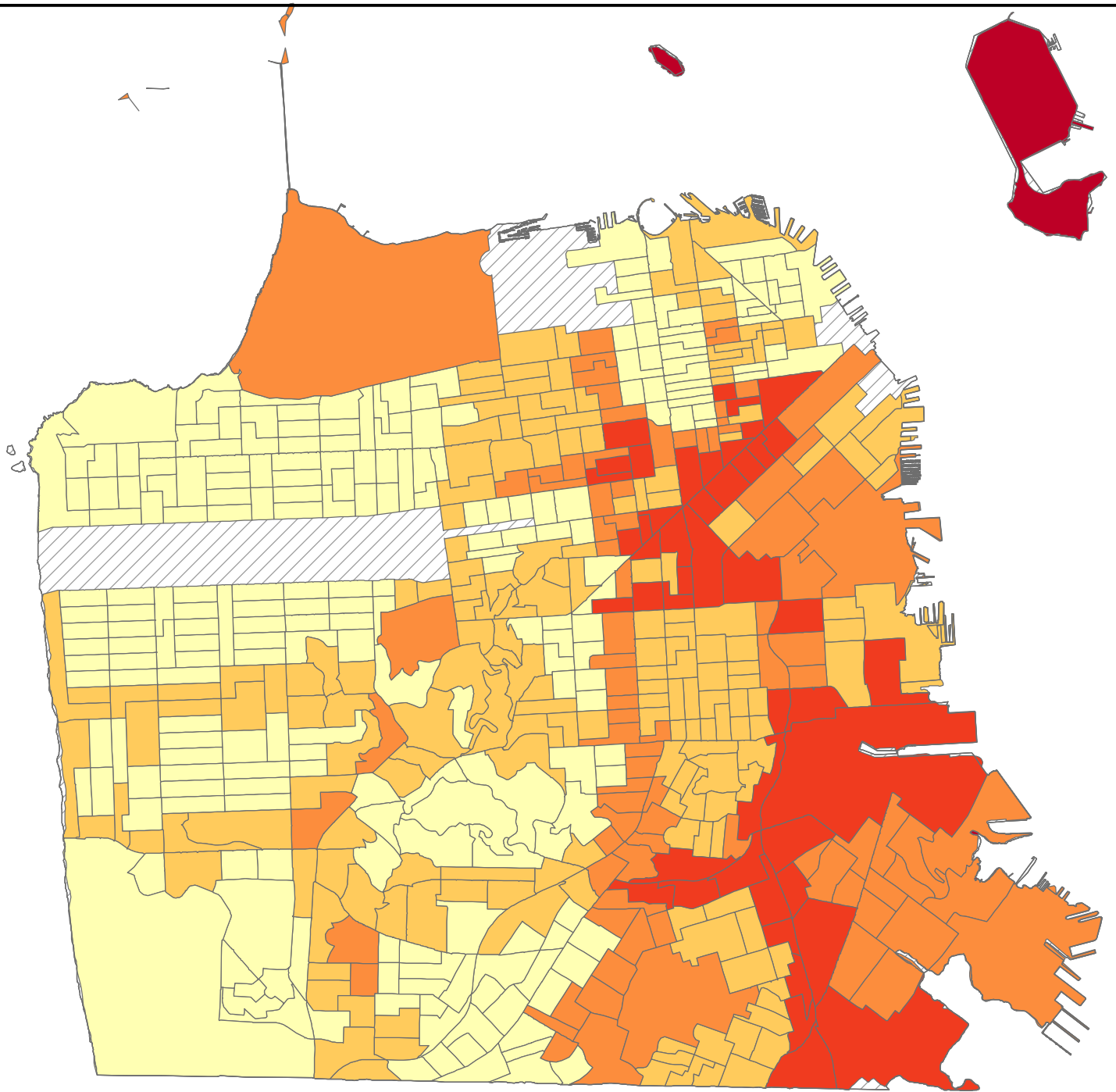
Percentage of residents living in households without English spoken "very well", by block group

Source: American Community Survey 2010-2012



Age-adjusted diabetes hospitalization rate per 10,000 residents by block group (2004-2015)

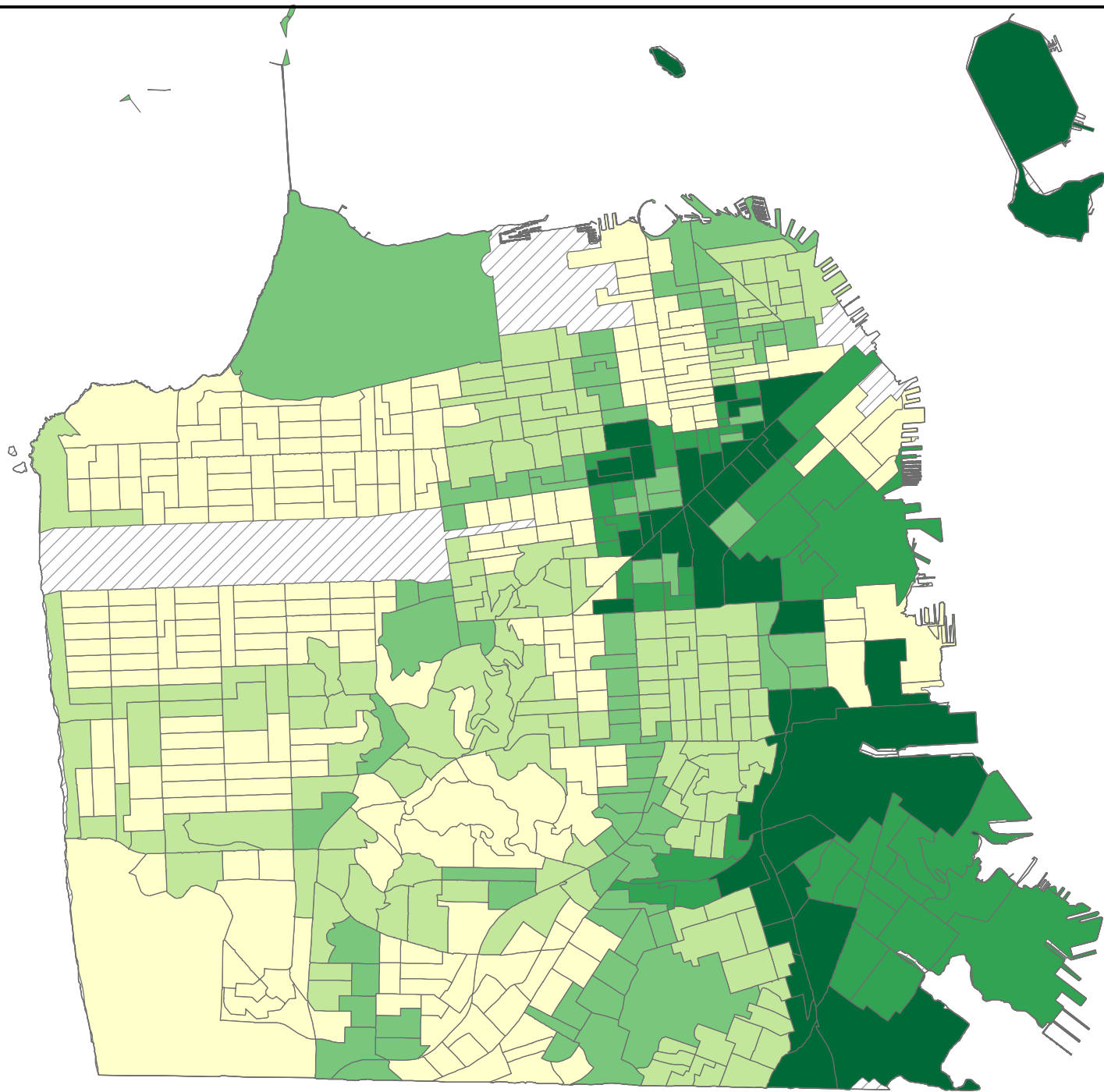
Source: San Francisco Community Health Assessment, 2016



San Francisco Department of Public Health,
Environmental Health Branch, 2015

Age-adjusted asthma hospitalization rate per 10,000 residents, by block group (2005 - 2014)

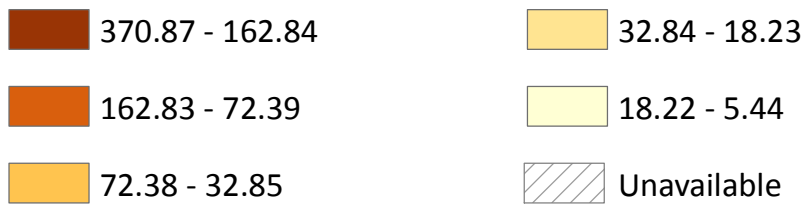
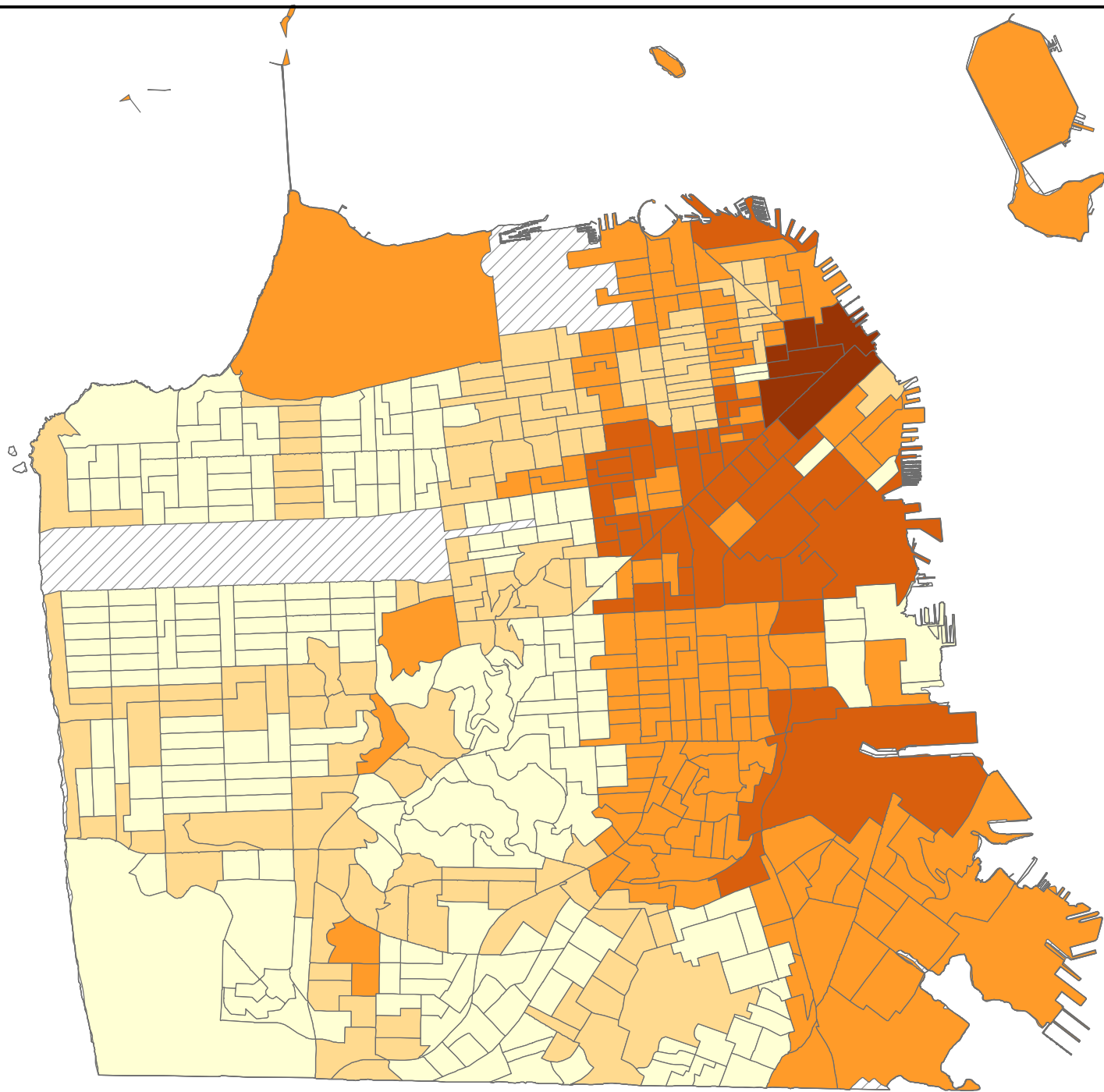
Source: San Francisco Community Health Assessment, 2016



San Francisco Department of Public Health,
Environmental Health Branch, 2015

Age-adjusted schizophrenia and other psychotic disorders hospitalization rate per 10,000 residents, by block group (2004-2015)

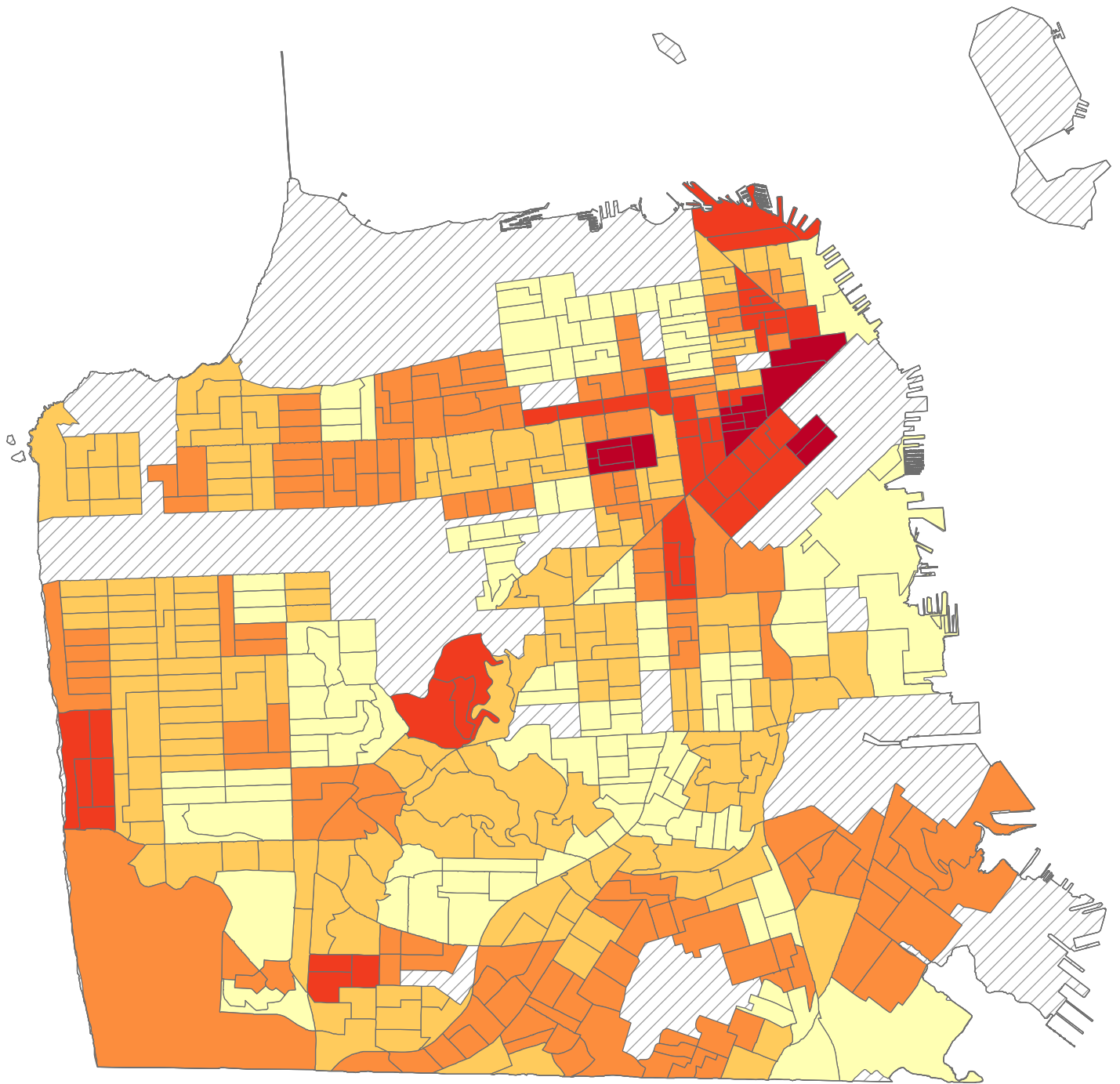
Source: San Francisco Community Health Assessment, 2016



San Francisco Department of Public Health,
Environmental Health Branch, 2015

Percentage of residents reporting a physical disability, by block group

Source: American Community Survey 2010-2012



46.60% - 26.10%

26.00% - 15.80%

15.70% - 10.60%

10.50% - 07.60%

07.59% - 03.38%

Unavailable

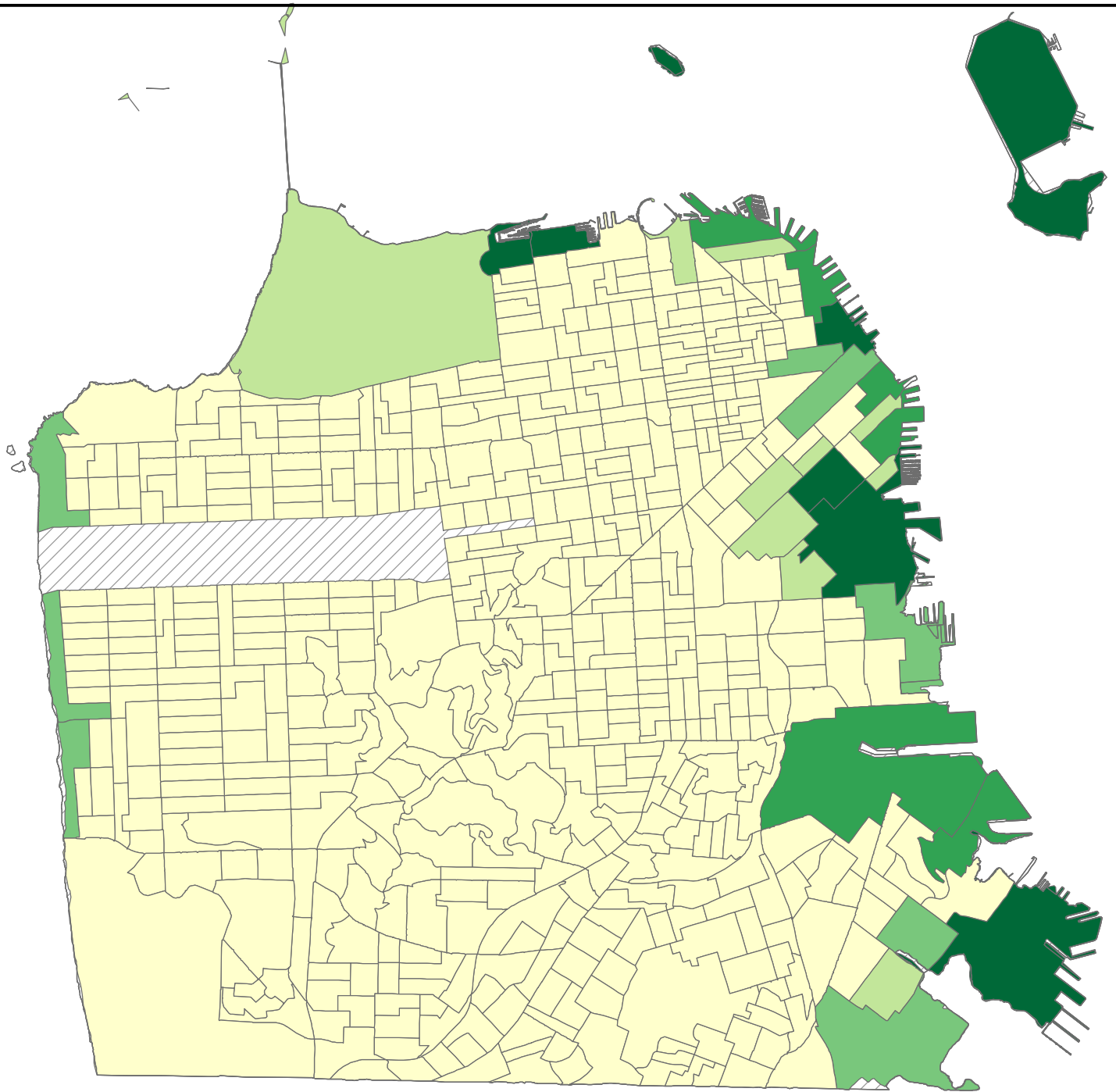
N



San Francisco Department of Public Health,
Environmental Health Branch, 2015

Percent of land area in the 100-year flood plain with 36-inches of sea-level rise (77 inch flood inundation), by block group

Source: San Francisco Sea-Level Rise Committee, AECOM, 2014



50.35% - 26.68%

9.33% - 3.63%

26.67% - 15.93%

3.62% - 0.00%

15.92% - 9.34%

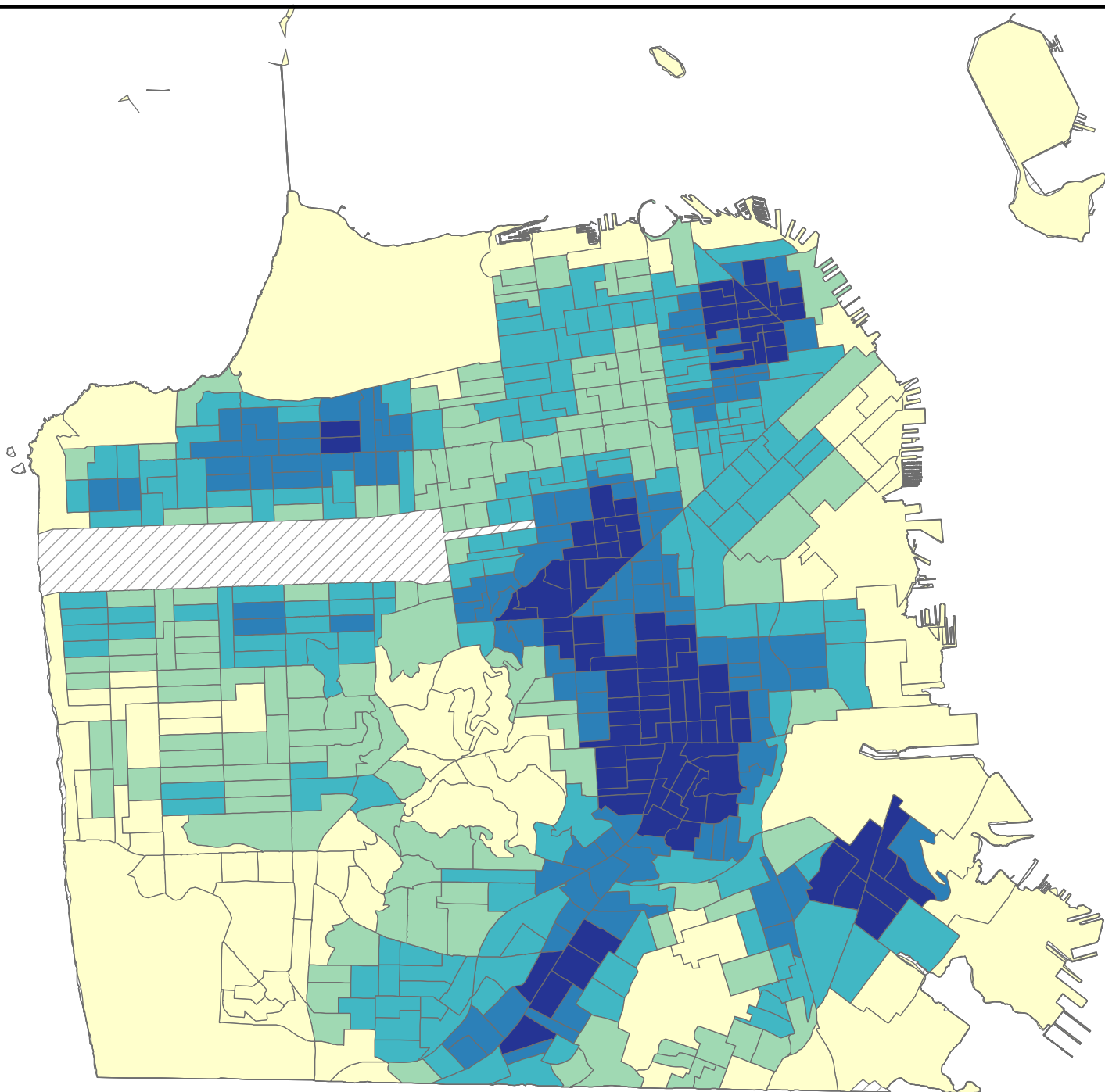
Unavailable

N



Concentration of sewer-related 311 calls, 2009-2014 by block group

Source: 311 Service Complaints, 2009 -2014



Very High Concentration

Low Concentration

High Concentration

Very Low Concentration

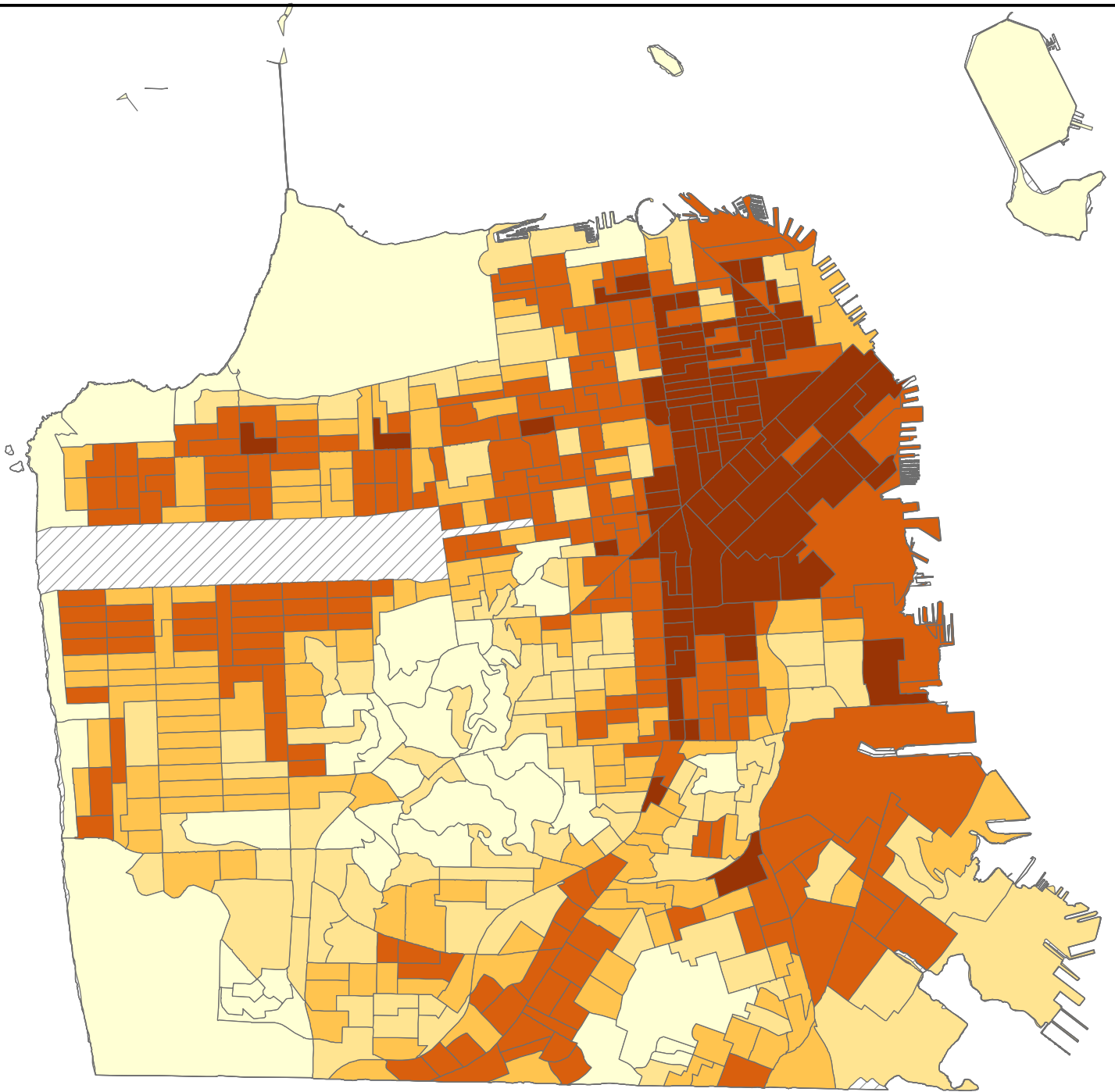
Medium Concentration

Unavailable



Impervious surface concentration, by block group

Source: USGS, 2011



Very High Concentration

Low Concentration

High Concentration

Very Low Concentration

Medium Concentration

Unavailable

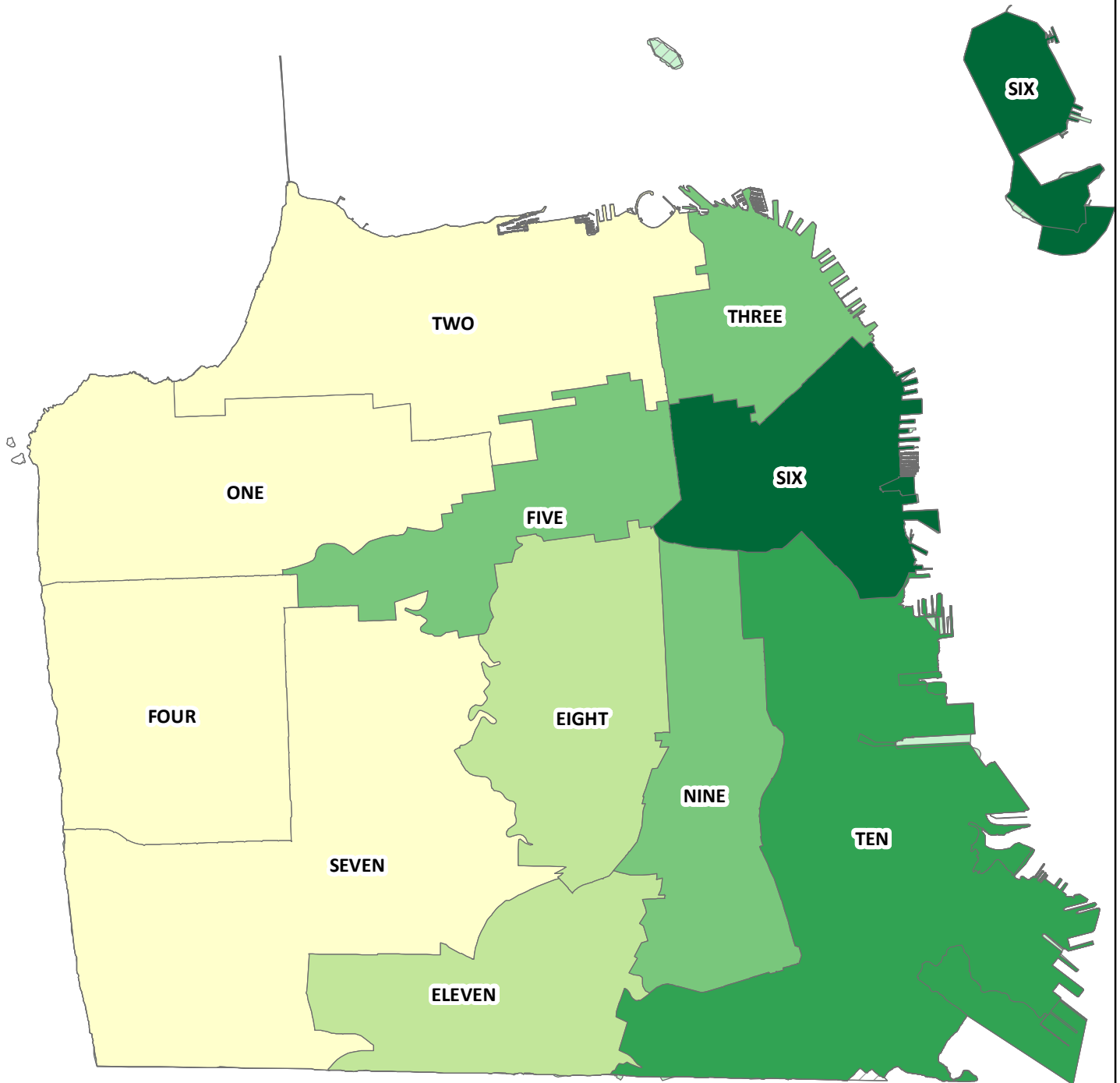
N



San Francisco Department of Public Health,
Environmental Health Branch, 2015

Homeless population per 1000 residents, by supervisor district

Source: 2015 San Francisco Homeless Count



54.19 - 17.54

2.42 - 1.12

17.53 - 4.91

1.11 - 0.00

4.90 - 2.43

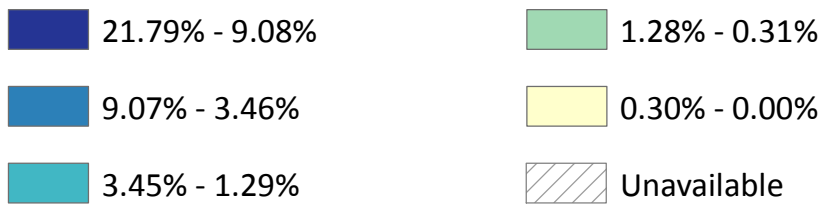
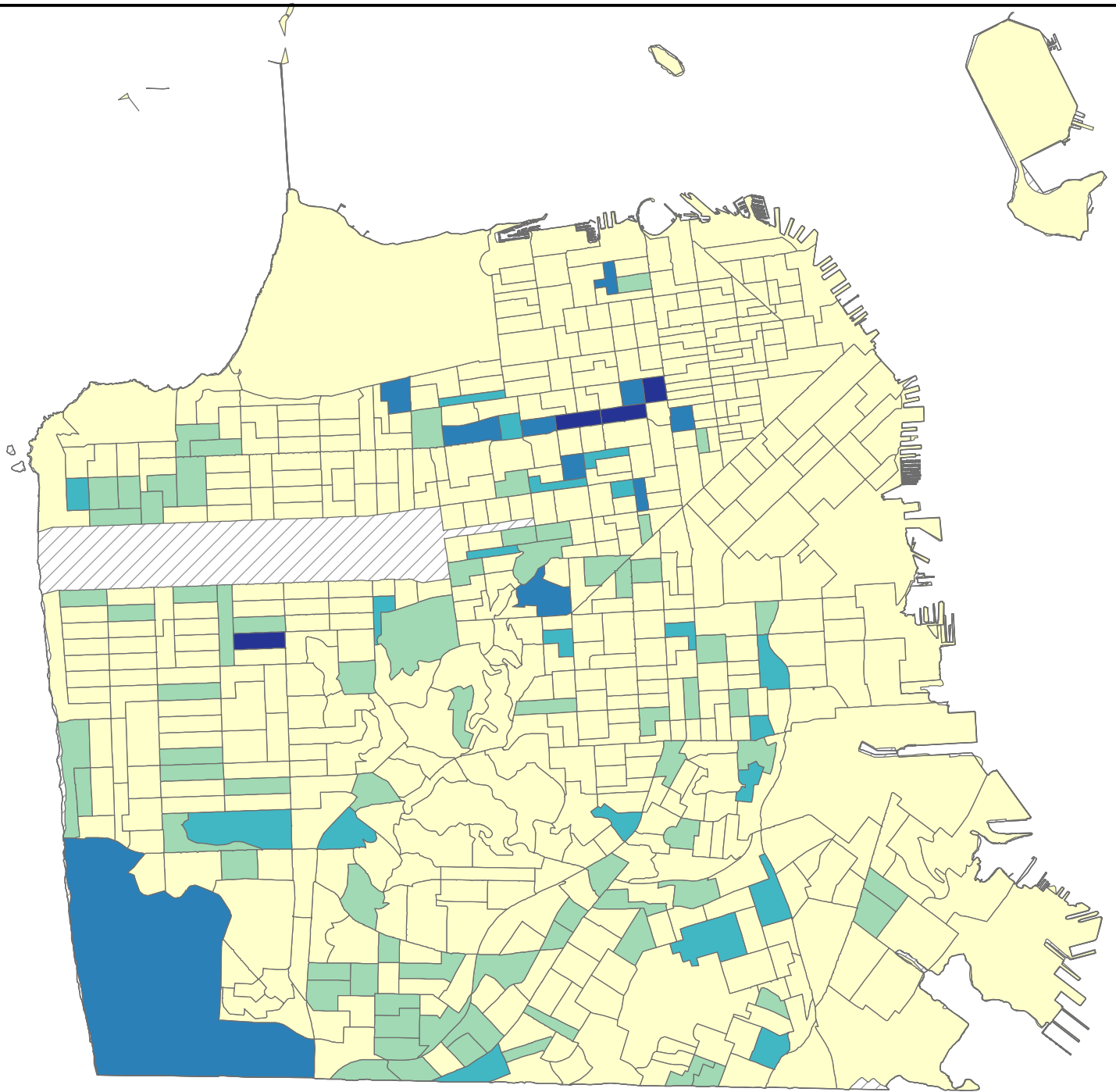
Unavailable

N



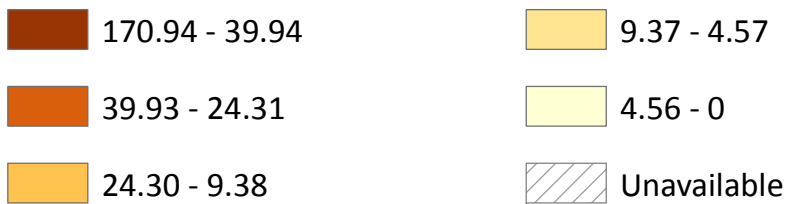
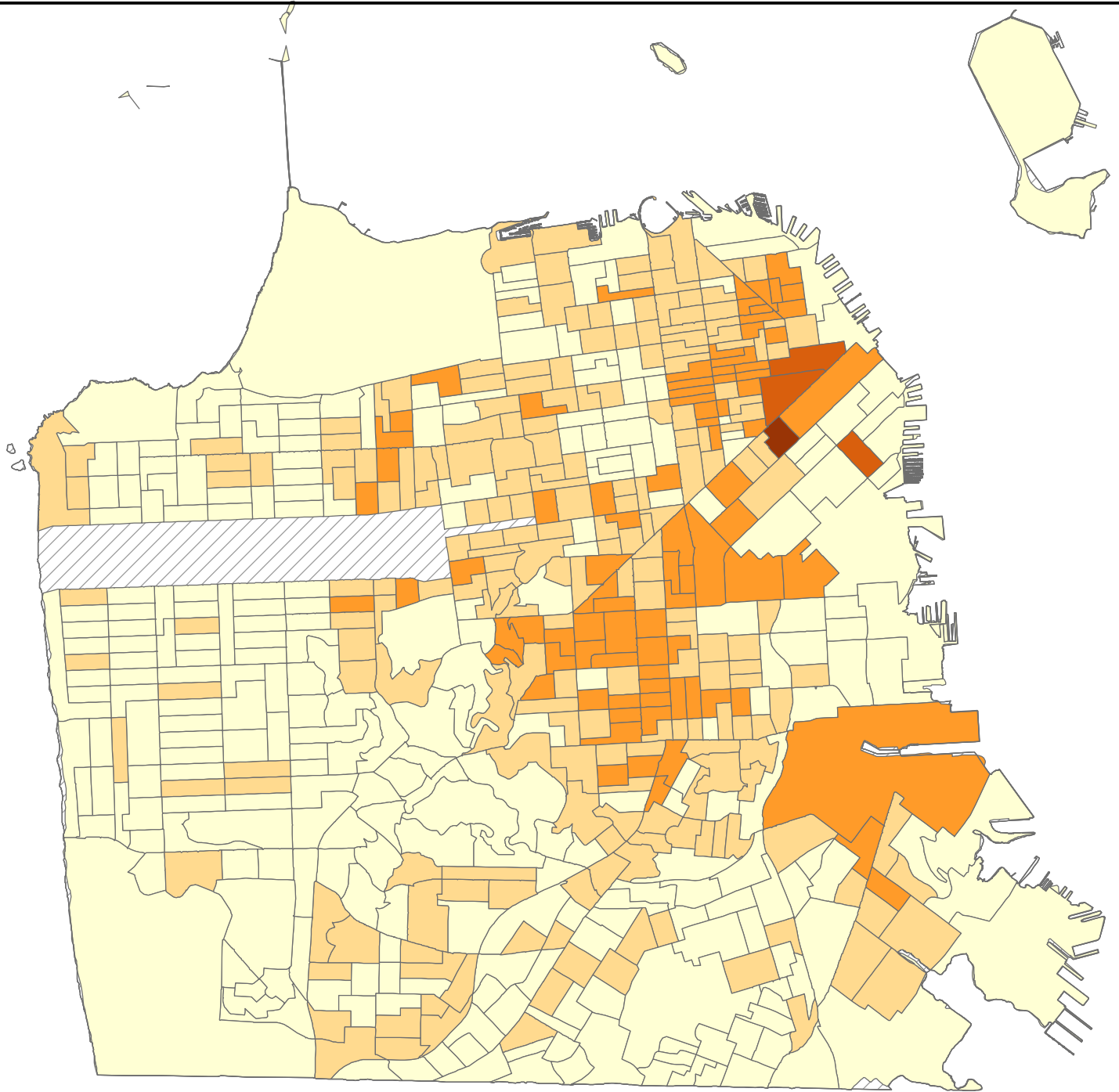
Percentage of residents living in a state-licensed residential care facility

Source: California Department of Social Services, 2015



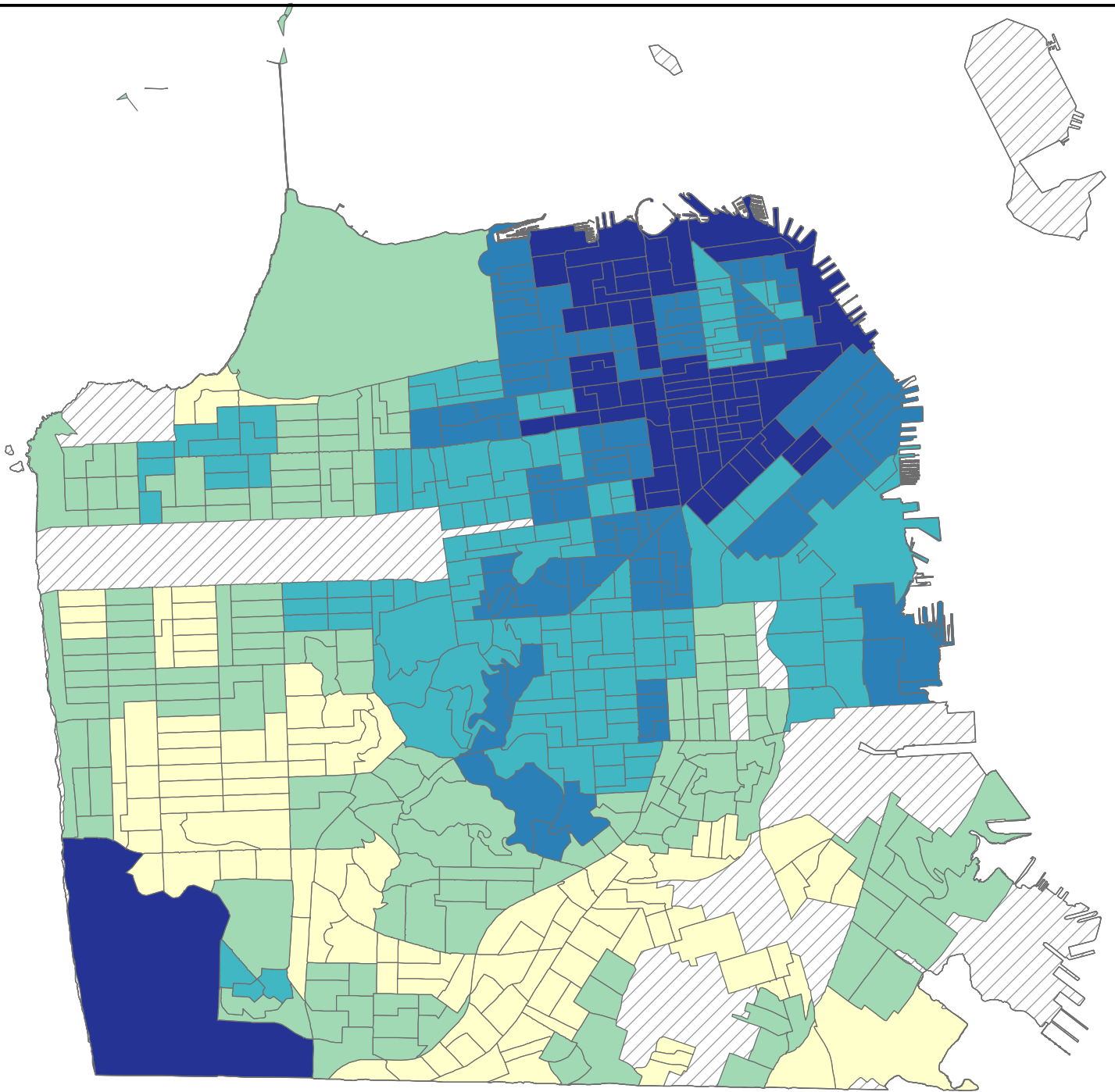
Annual housing violations per 1000 residents, by block group

Source: SFDBI, SFDPH, SFFD violations, 2010-2012



Percentage of residents living alone, by block group

Source: American Community Survey, 2010-2012



76.27% - 55.08%

9.33% - 3.63%

55.07% - 44.11%

3.62% - 0.00%

15.92% - 9.34%

Unavailable

N



San Francisco Department of Public Health,
Environmental Health Branch, 2015