



# Chief's Report:

## Operations & Transformation Updates

### Monthly Data Report

---

CHIEF KATHERINE W. MILLER

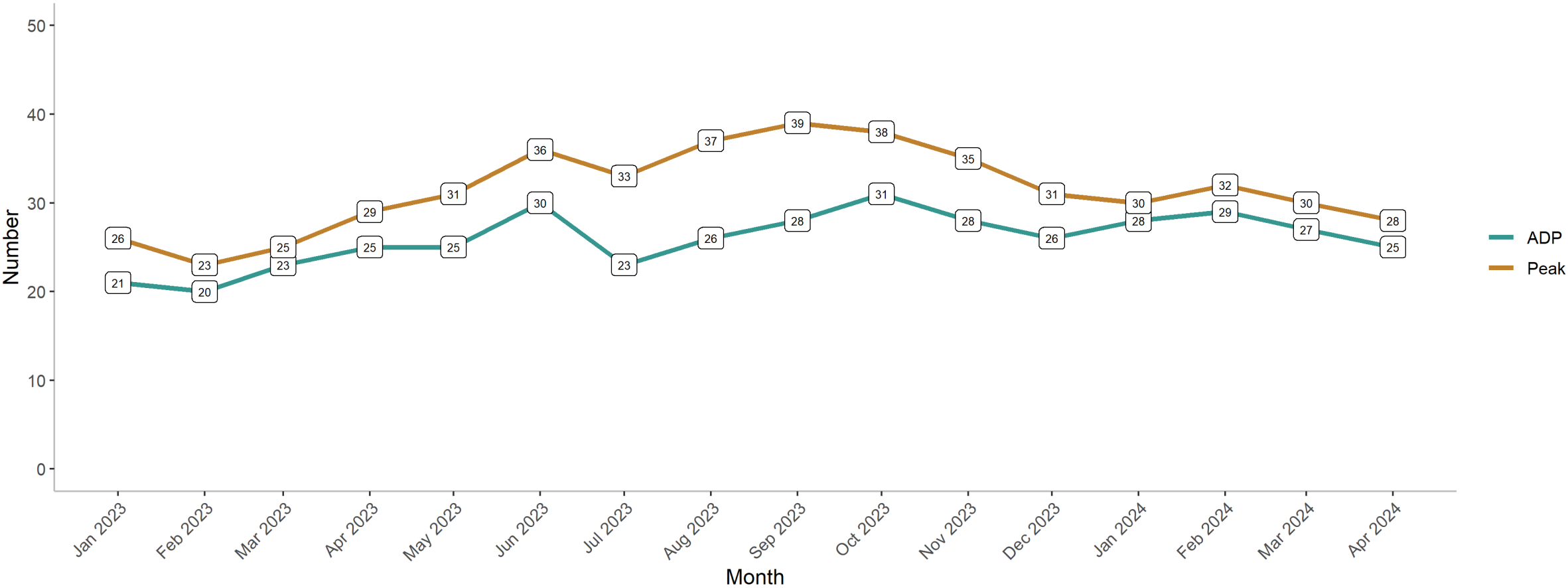
JUNE 12, 2024

# Monthly Data Report Highlights

Operations

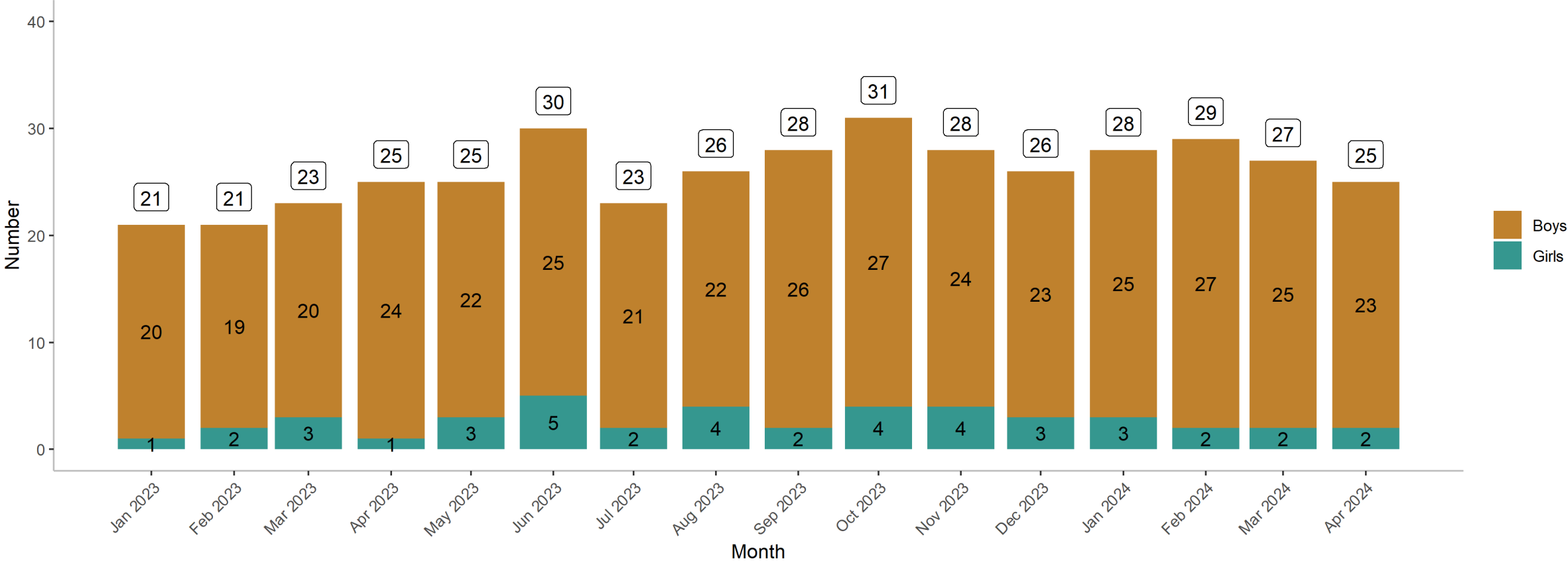
# JH 1.2: Average & Peak Population (slide 7)

Average Daily Population & Peak Population by Month



# JH 2.1: ADP by Gender (slide 9)

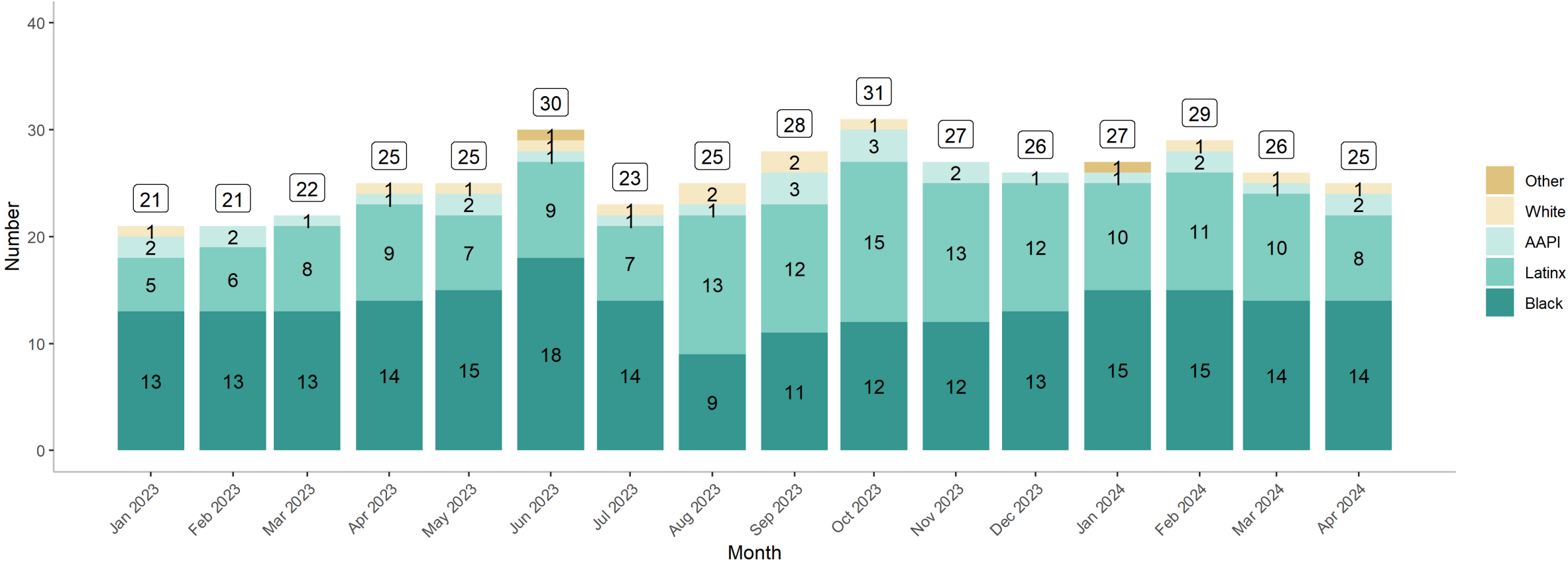
Juvenile Hall ADP by Gender by Month



Note: Due to rounding error, ADP by demographics may differ from overall ADP

# JH 2.2: ADP by Race/Ethnicity (slide 10)

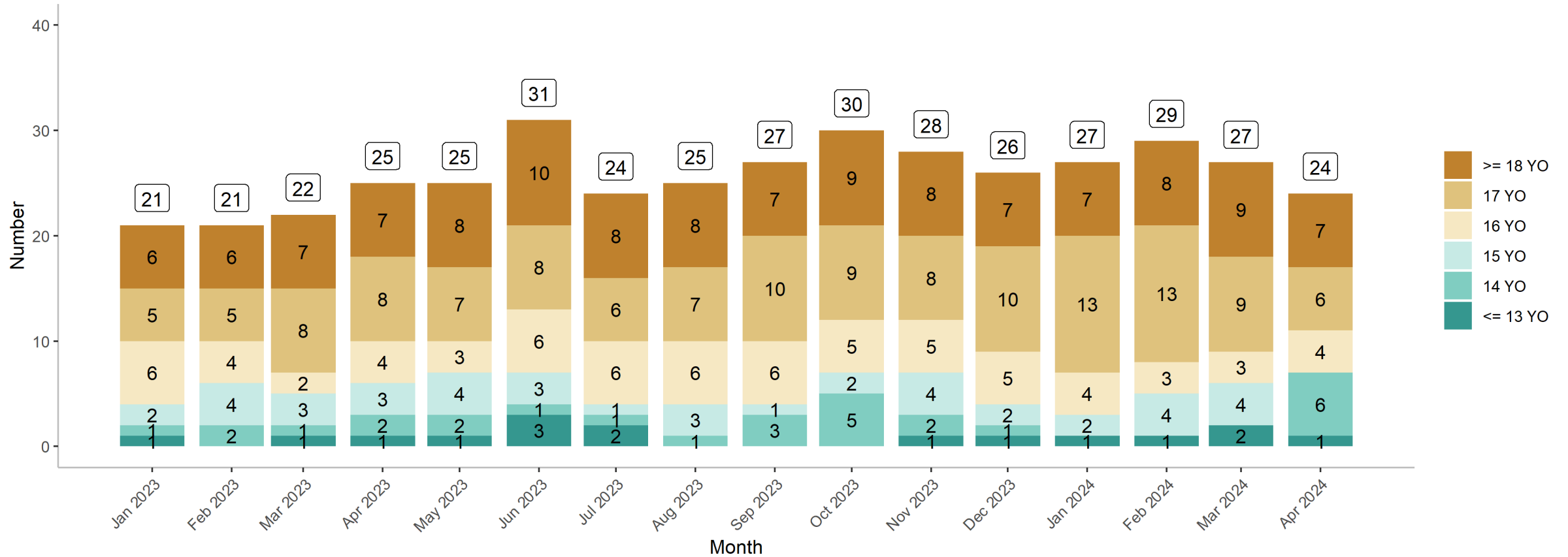
Juvenile Hall ADP by Race/Ethnicity by Month



Note: Due to rounding error, ADP by demographics may differ from overall ADP

# JH 2.3: ADP by Age (slide 11)

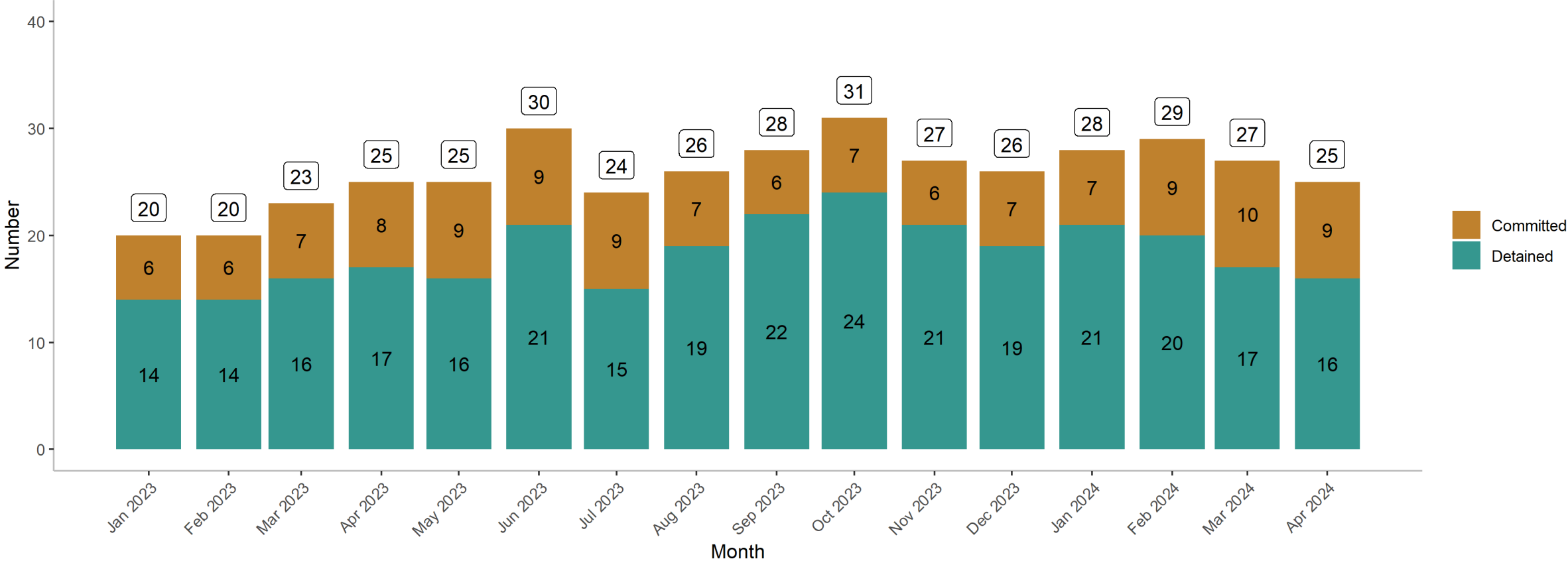
Juvenile Hall ADP by Age by Month



Note: Due to rounding error, ADP by demographics may differ from overall ADP

# JH 2.4: ADP by Status (slide 12)

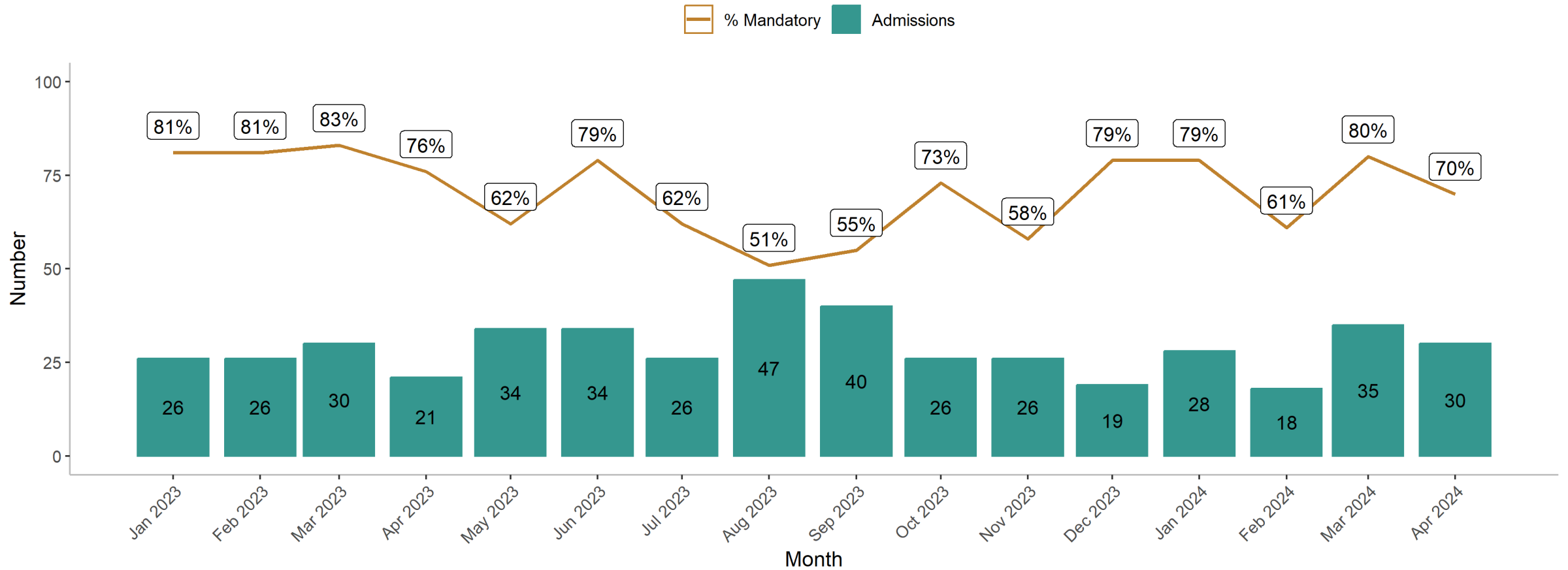
Juvenile Hall ADP by Status by Month



Note: Due to rounding error, ADP by demographics may differ from overall ADP

# JH 4.1: Admissions by % Mandatory (slide 17)

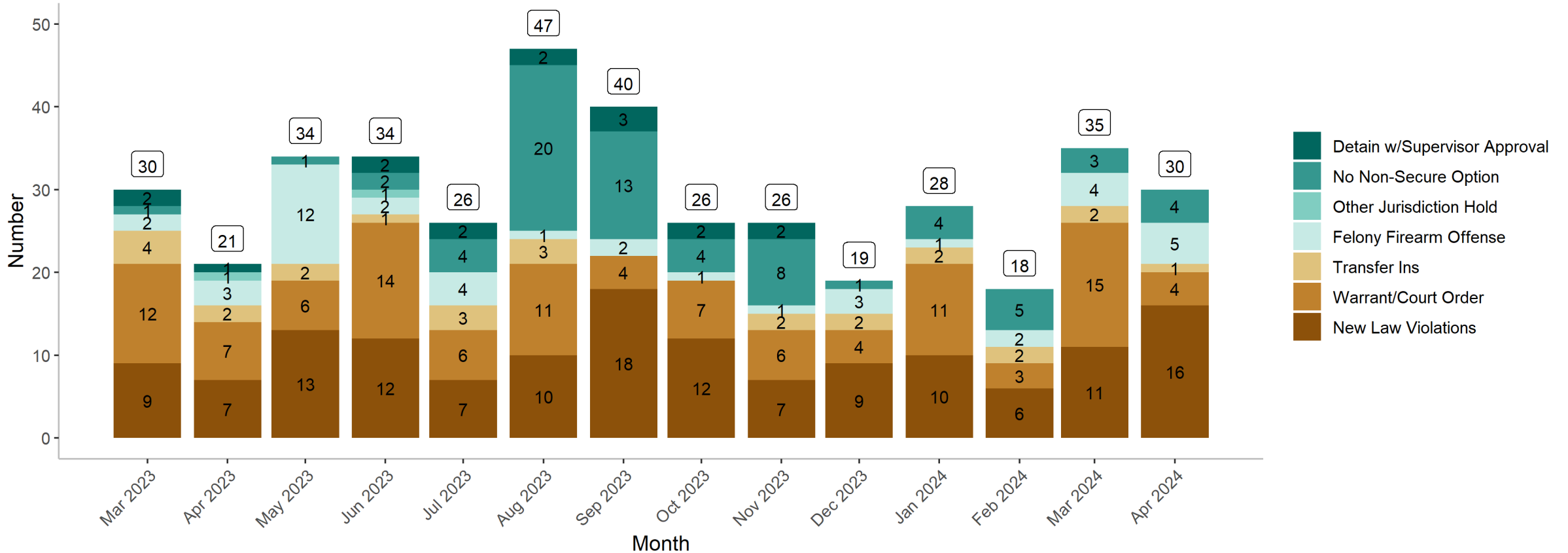
Admissions and % of Admissions Mandated by State Law by Month





# JH 4.2: Admissions by Primary Reason (slide 18)

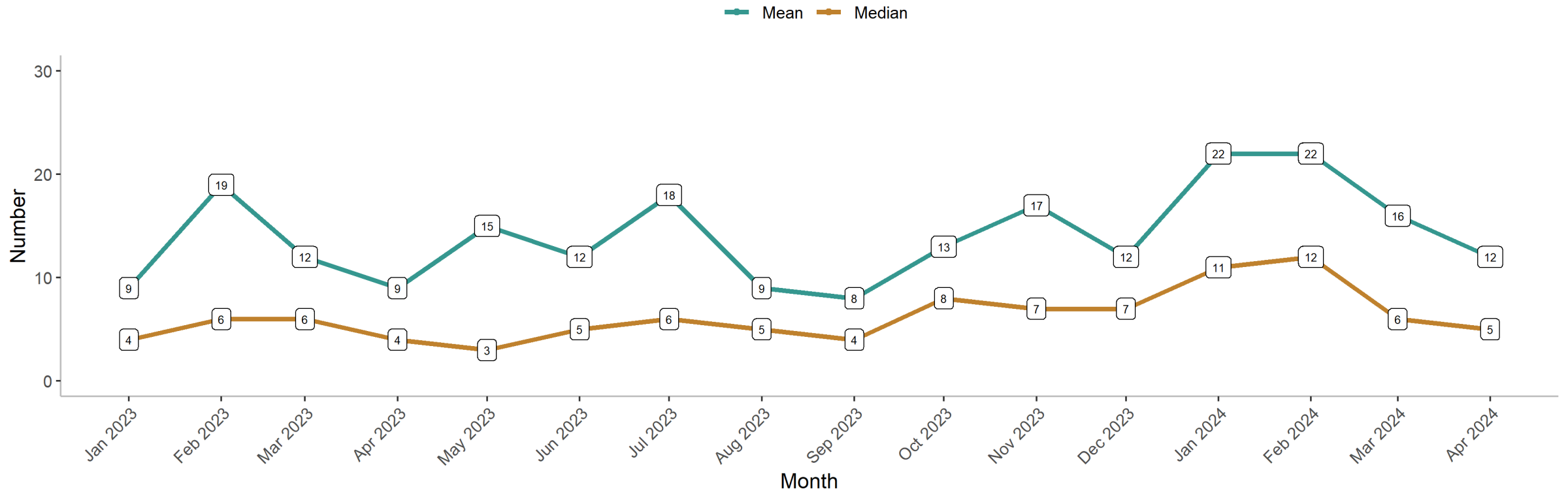
Admissions by Primary Detention Reason by Month



Note: JPD transitioned from the DRI to DDT for detention decision-making in March 2023.

# JH 3.1: Average Length of Stay for Detained Youth Released (slide 14)

Length of Stay (in Days) for Detained Youth Released Throughout the Month by Month



Note: As of the April-24 report, the calculation of length of stay has been updated to reflect only detained youth released. Average length of stay for committed youth released will be reported on in annual reports due to small Ns.

# Workforce Updates

Operations

# Workforce Updates

- Hires
- Separations
- Employee of the Month: **Congratulations Rosenda Rodarte, JJC Counselor**

# Transformation Updates

Transformation

# DCYF Justice Services Planning

## Transformation Update

- **Joint Planning Kick Off Meeting – 6/4/24**

- Community Assessment & Referral Center (CARC)
  - Huckleberry Youth Programs
- Justice Services Care Coordinators (JSCCs)
  - Bay Area Community Resources
  - Center on Criminal & Juvenile Justice
  - Mission Neighborhood Centers
  - Sunset Youth Services
  - Young Community Developers

- DCYF
- JPD

- **Meeting Weekly**

- Will seek input from Judges, DPH/SPY, Attorneys, Probation, Youth & Families

- **Discussion Topics**

- Community agreements for the planning process
- Concerns about the transition at an organization level
- Concerns about the transition at a youth & family level
- Expertise that each organization will bring to the planning process
- Transitioning to a new model
- Referrals
- Hours of operation/ mobility
- Hand offs between CARC & JSCCs
- Case management
- Program linkages
- Partner communications & coordination
- Quality assurance

Questions?