

**M**occasin  
**E**ngineering +  
**R**ecords Building

---

**Civic Design Review  
Phase I**

November 2024



# COMMENTS FROM CONCEPT CDR (6/17/2024)

Favorable reception at Concept Design Review with no follow up comments or corrective direction

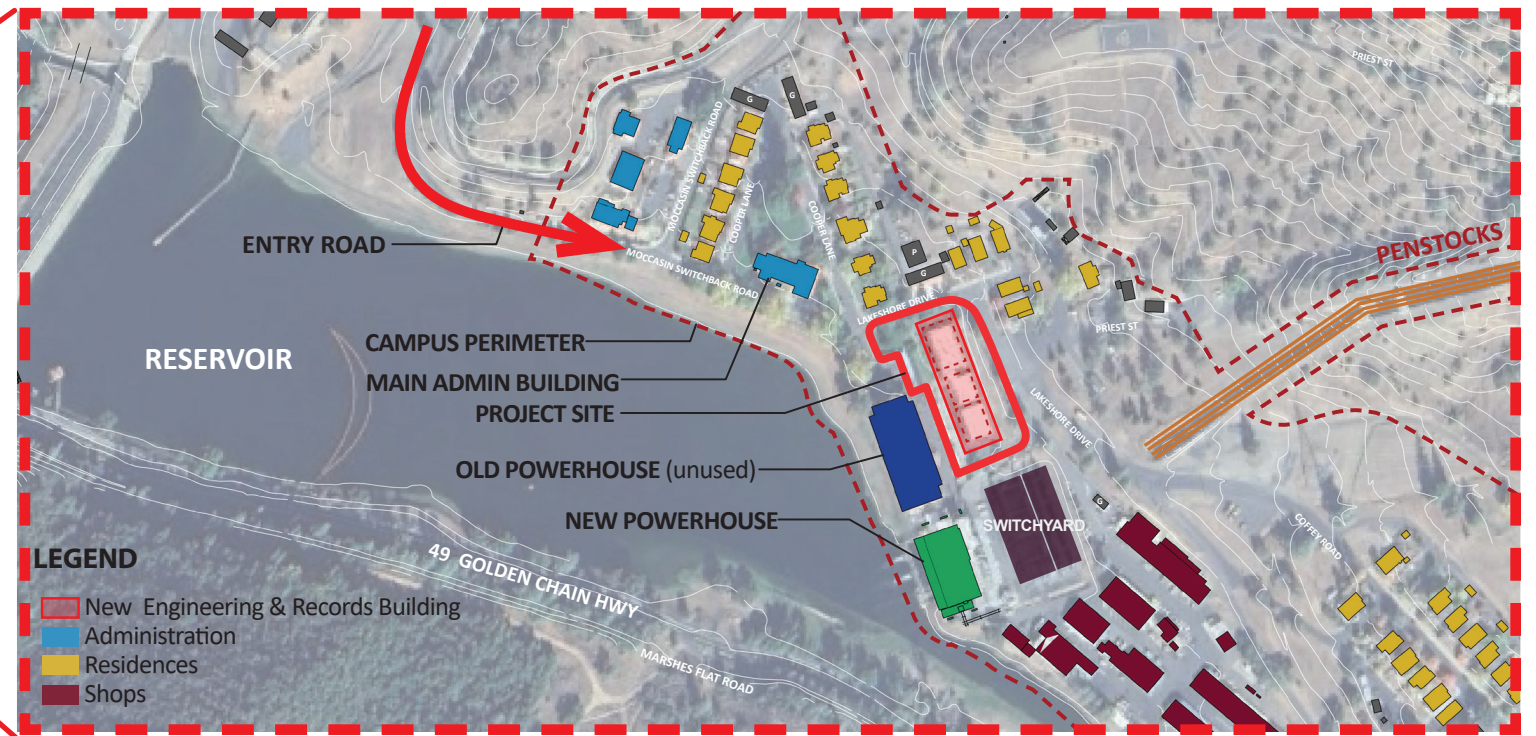


# PROJECT BACKGROUND + CONTEXT

# SF WATER DISTRIBUTION

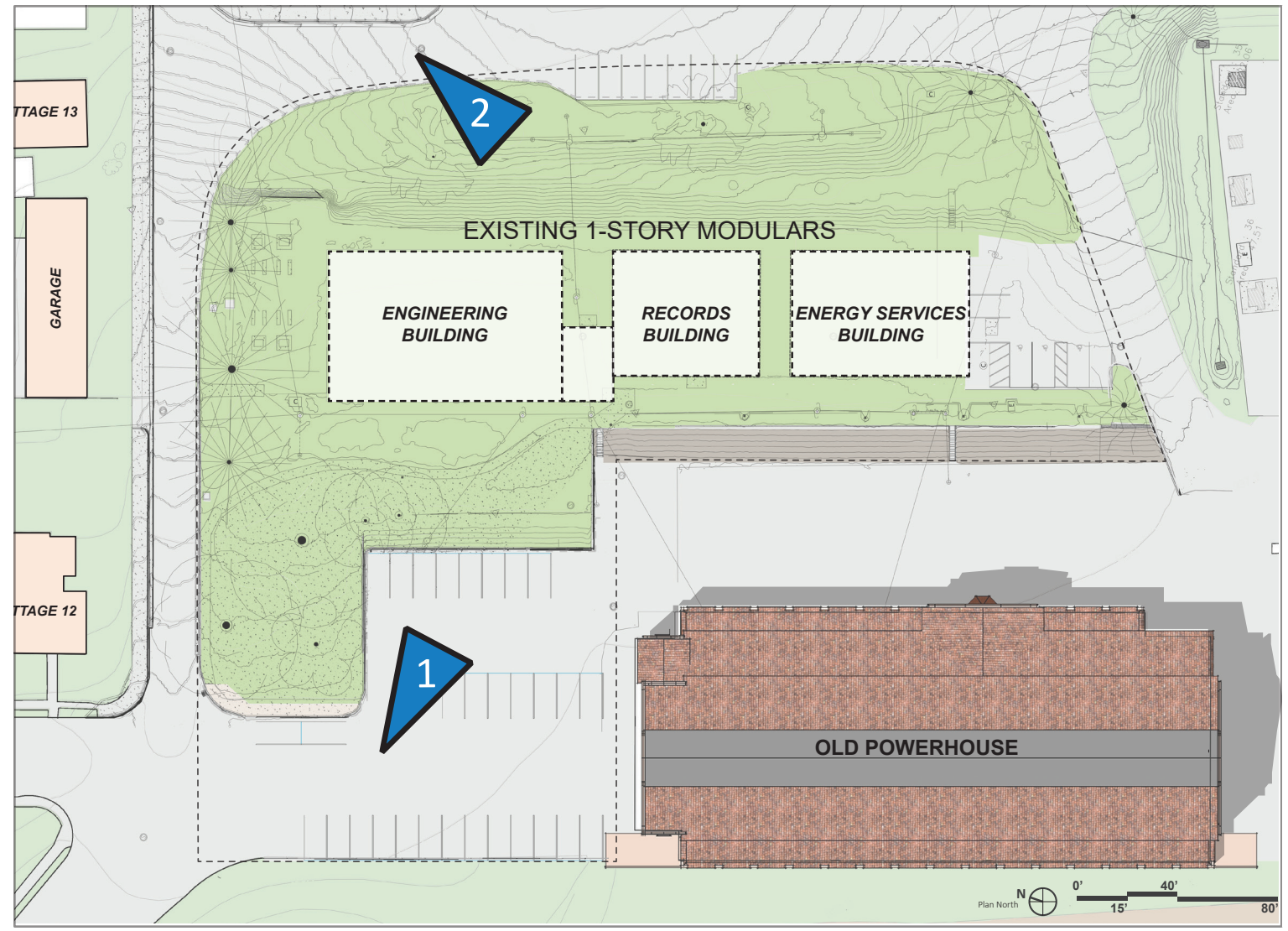


# MOCCASIN CAMPUS + PROJECT SITE

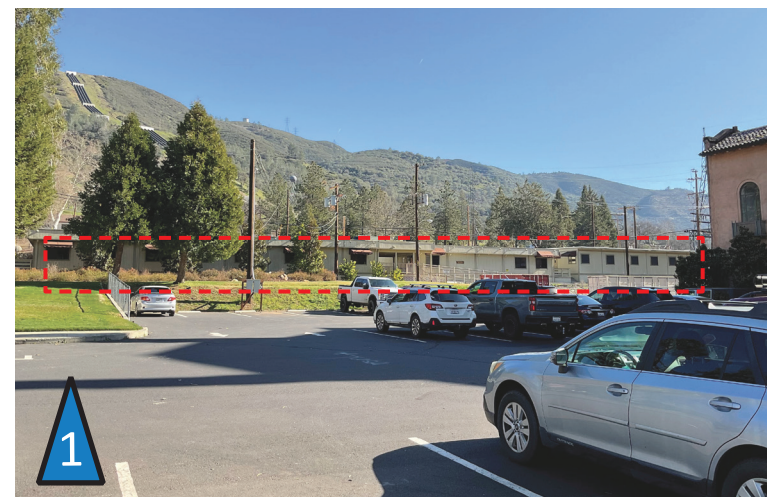
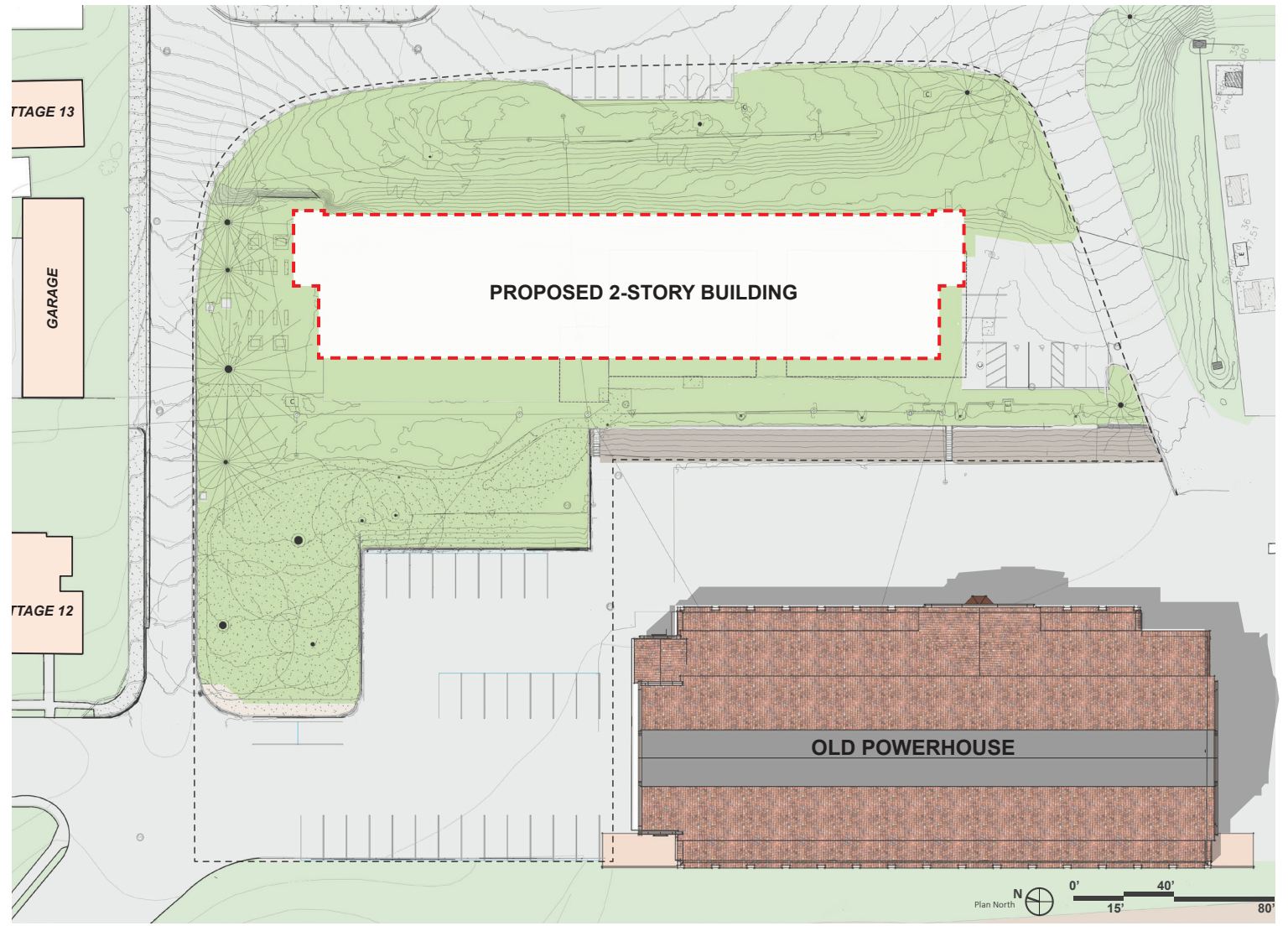




# PROJECT SITE + CURRENT BUILDINGS



# PROJECT SITE + PROPOSED BUILDINGS



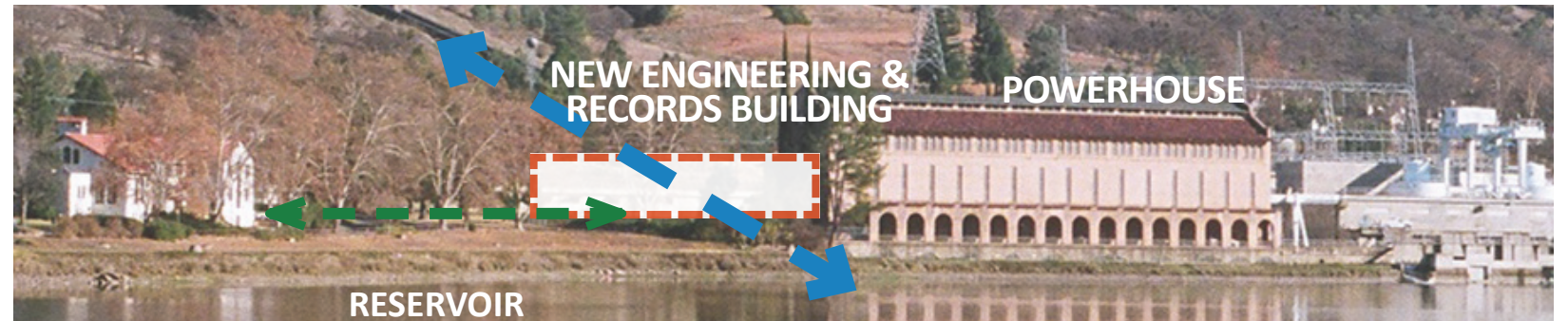
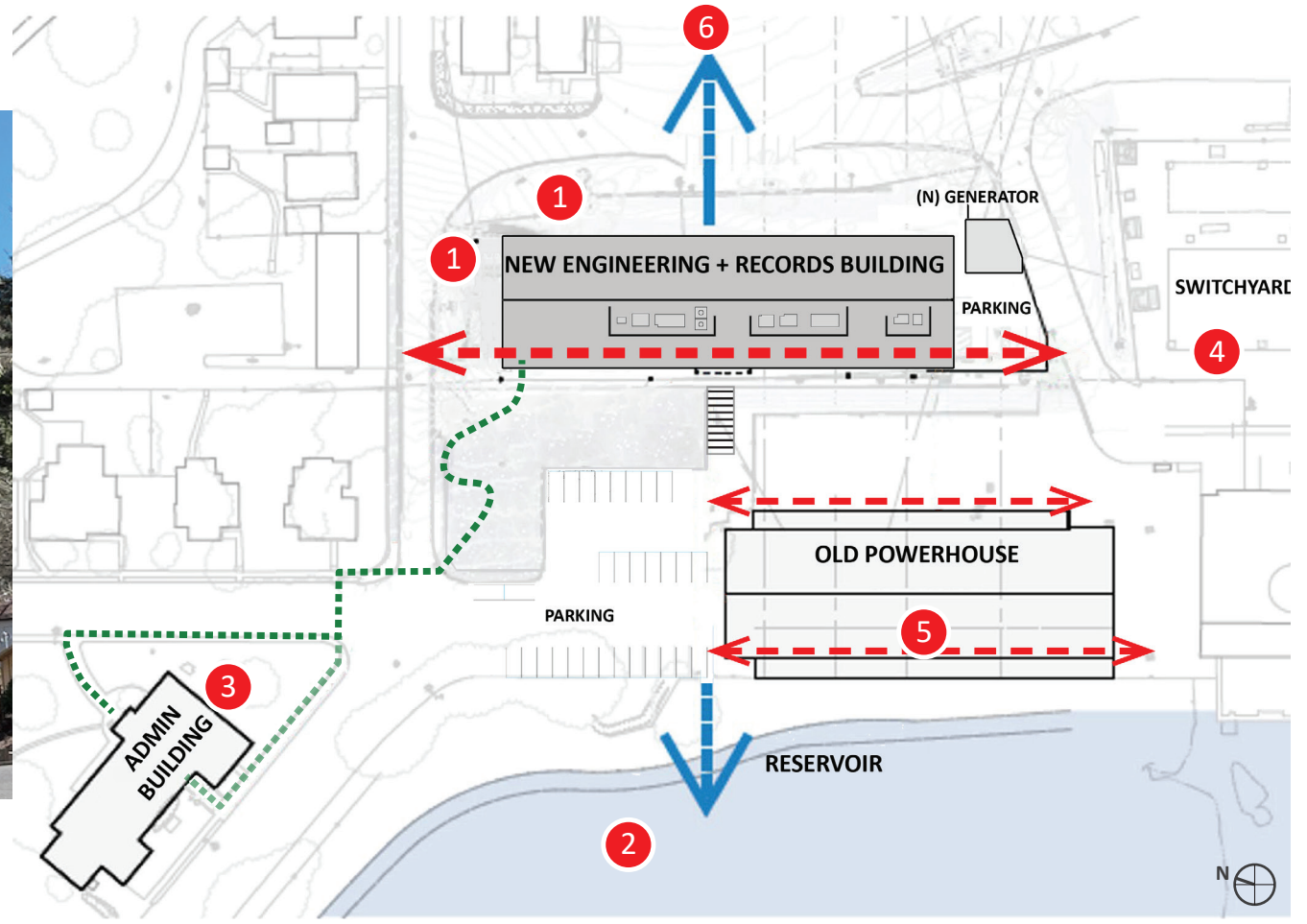
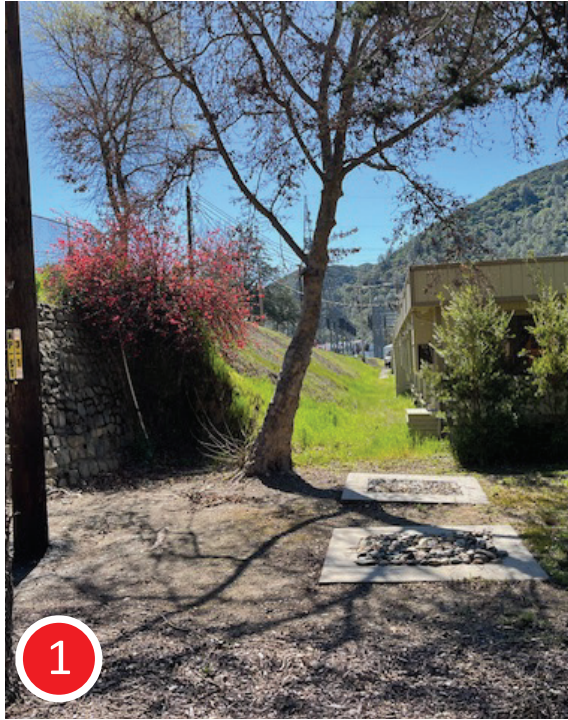
EXISTING 1-STORY MODULARS to be replaced



EXISTING 1-STORY MODULARS



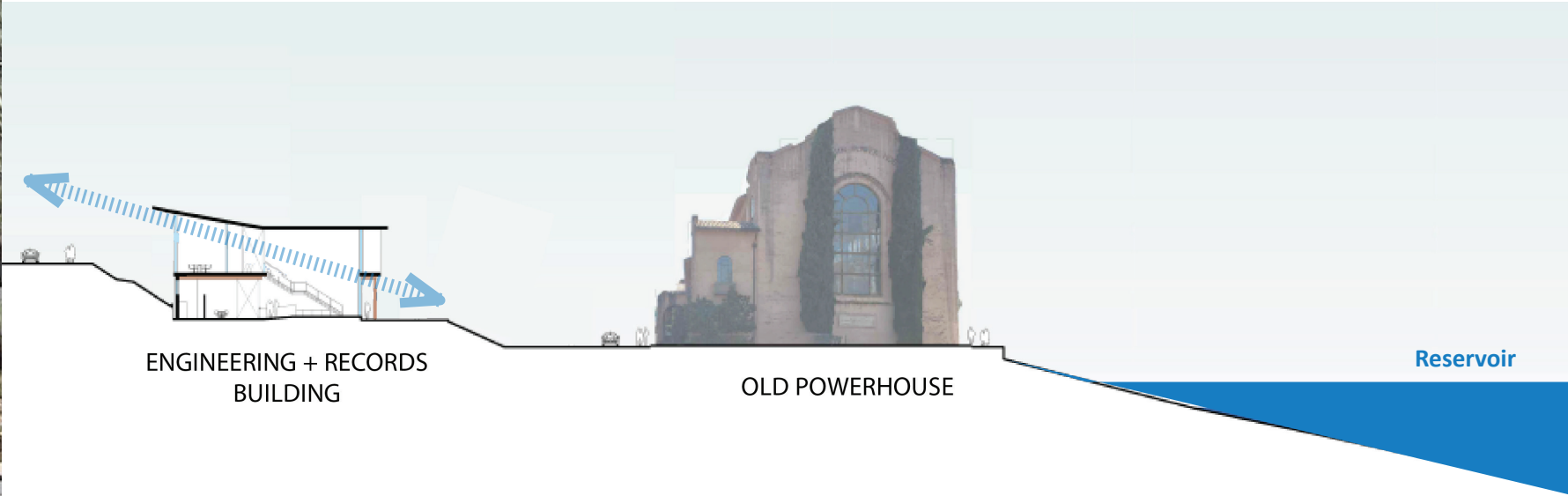
# Context + Views





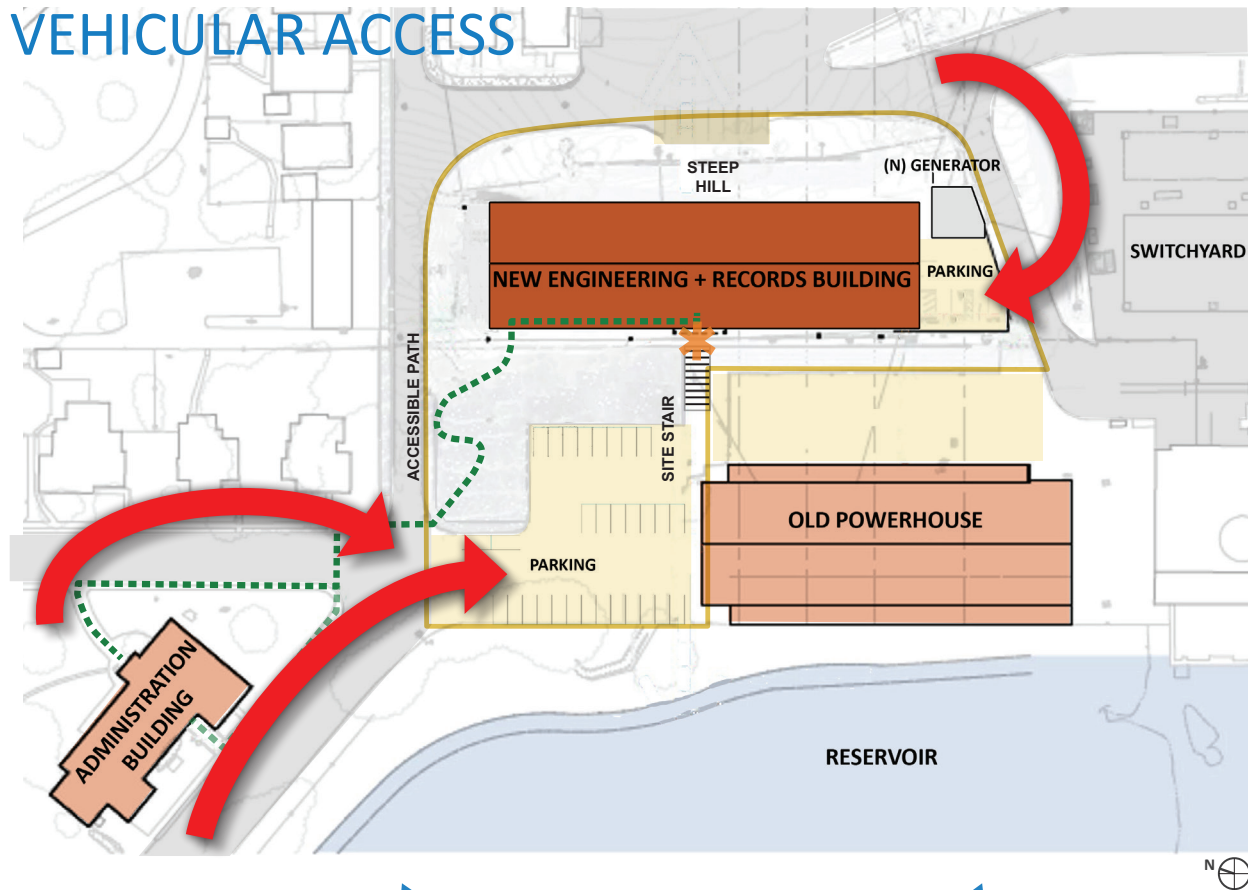
# MASSING + BUILDING CONCEPT

# Site Section

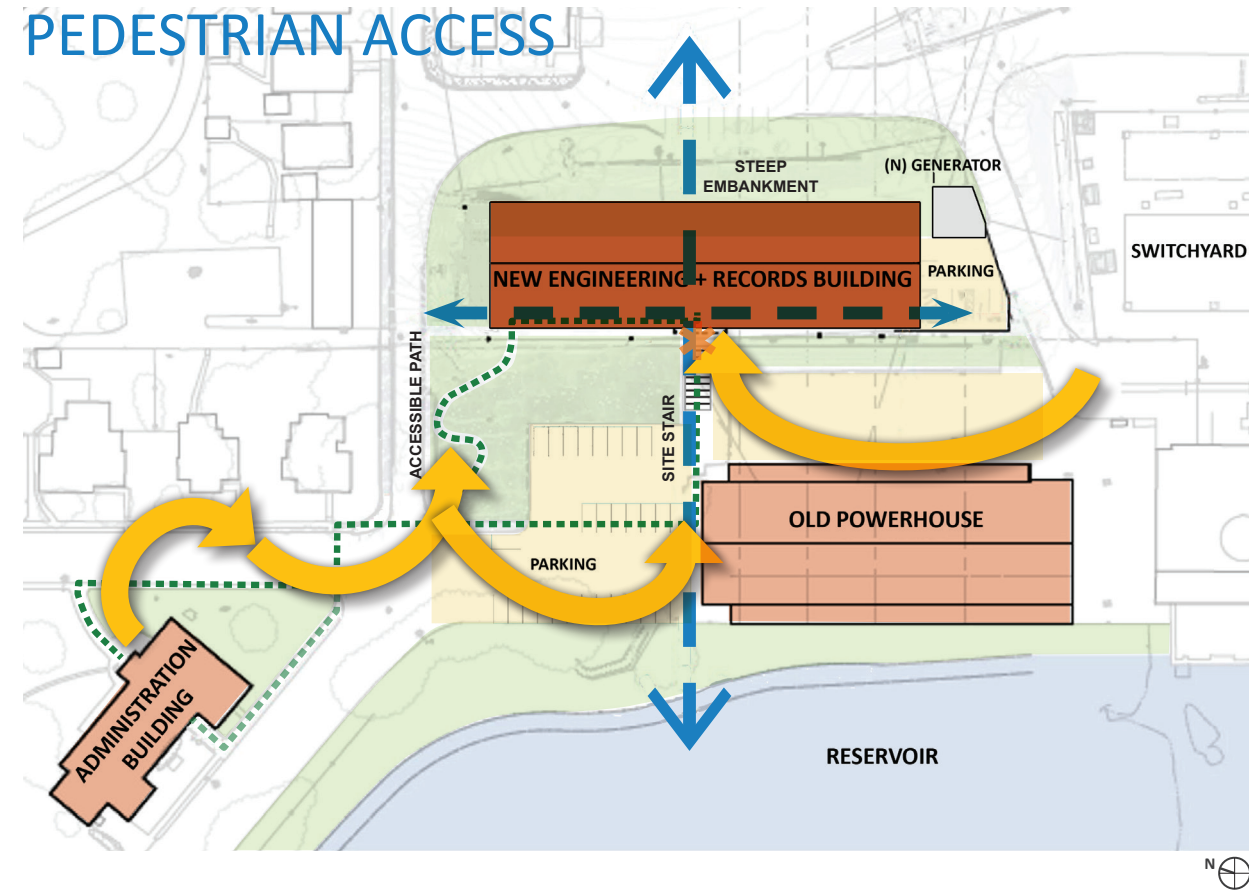




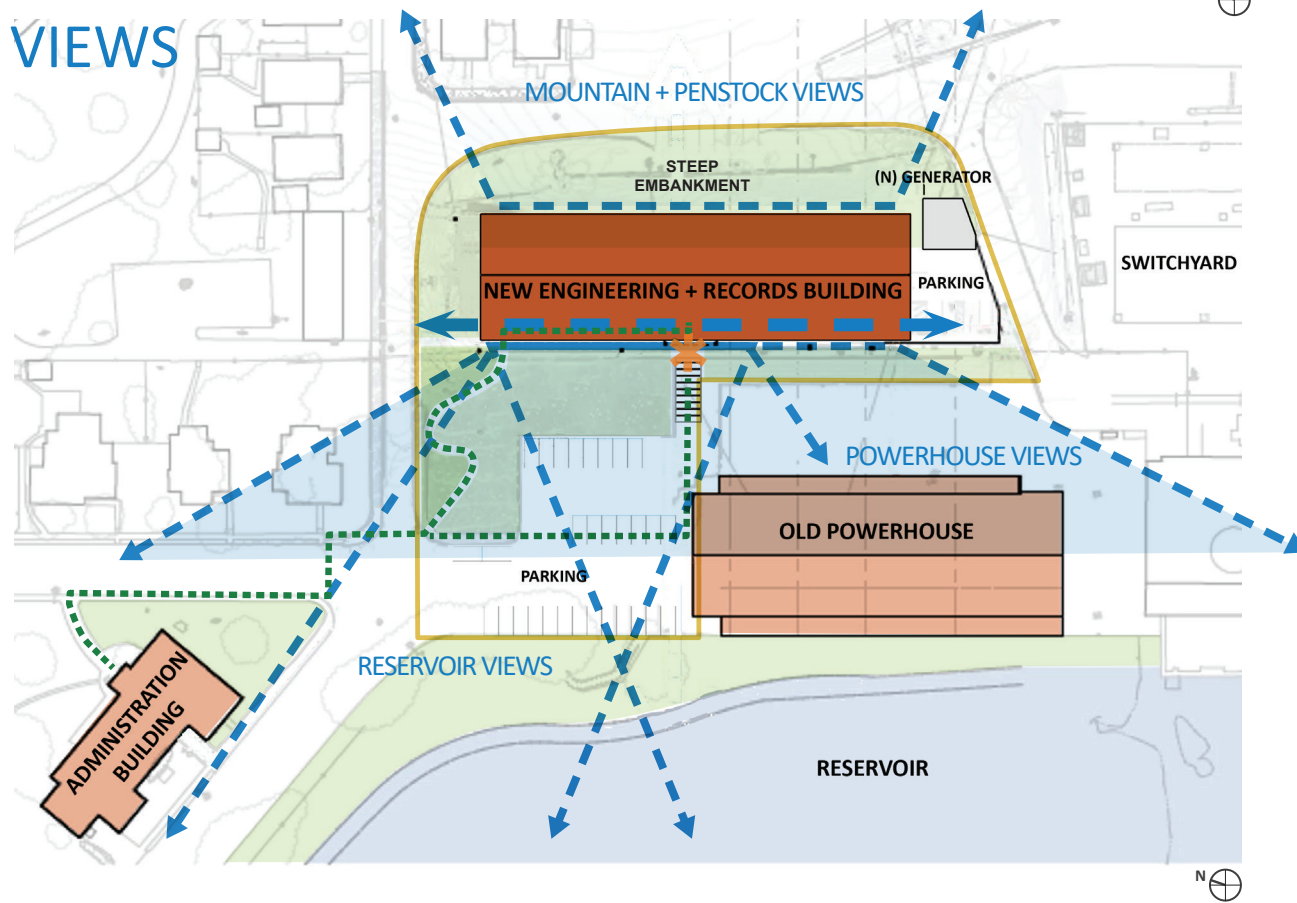
## VEHICULAR ACCESS



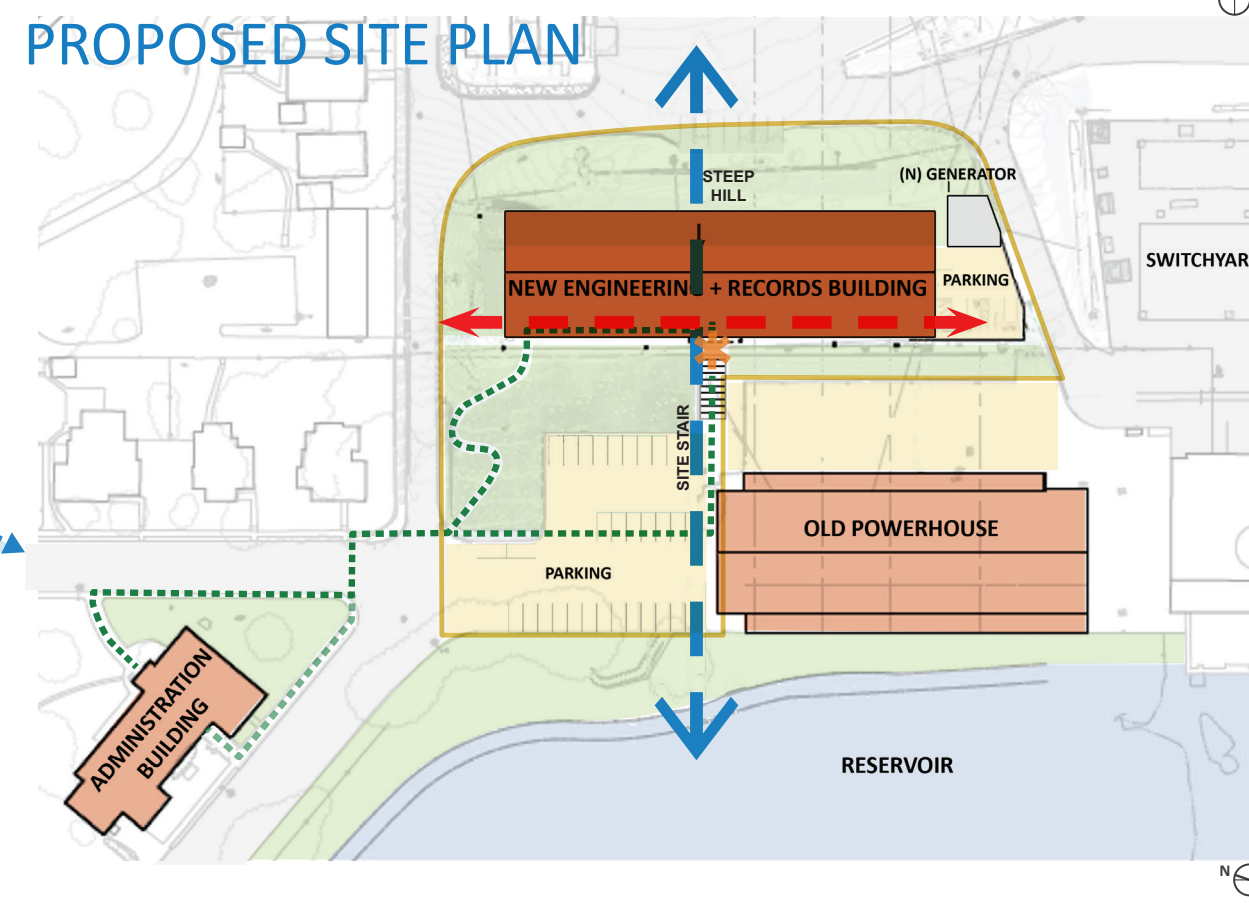
## PEDESTRIAN ACCESS



## VIEWS



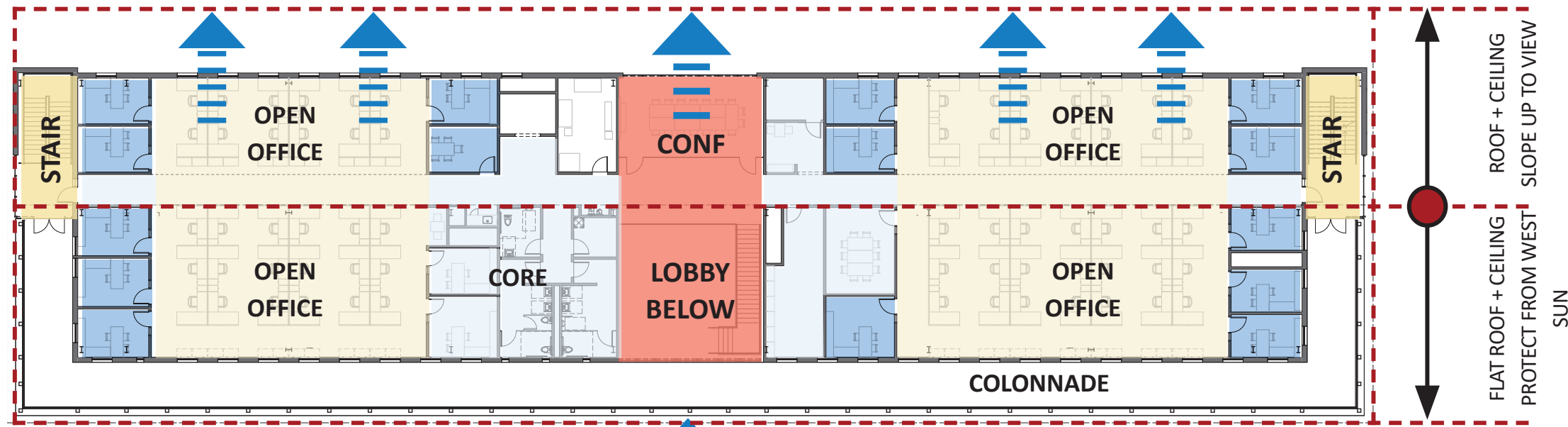
## PROPOSED SITE PLAN



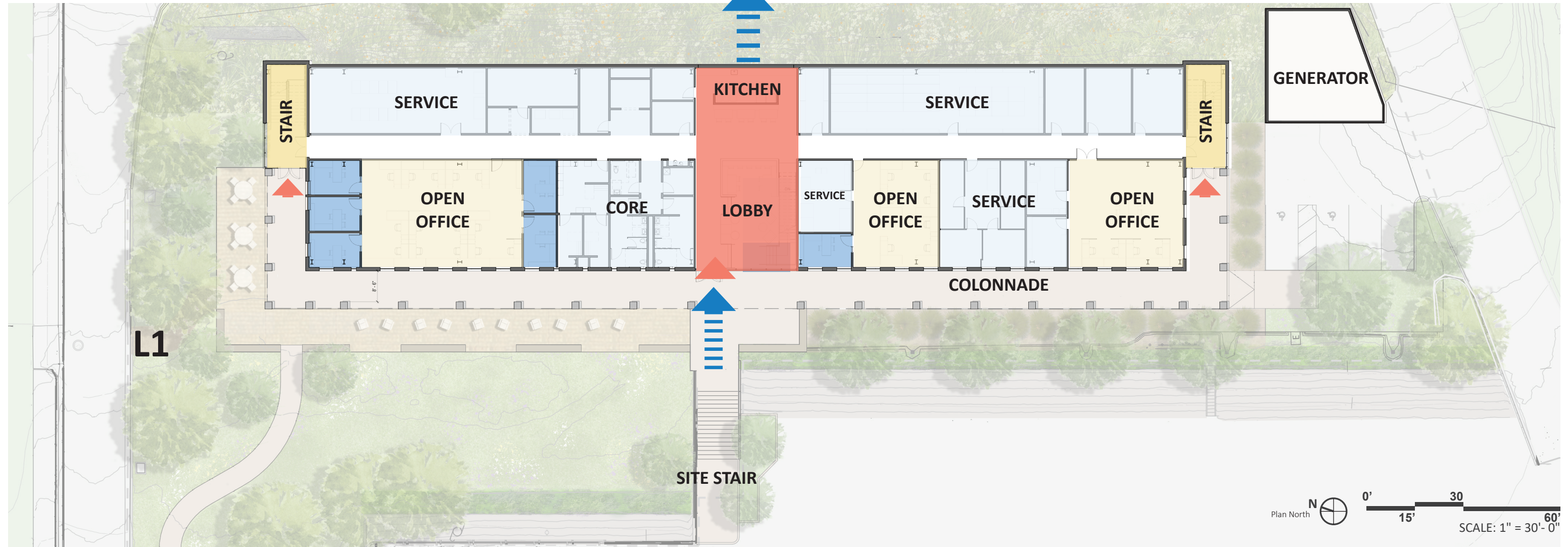


# Building Organization

L2

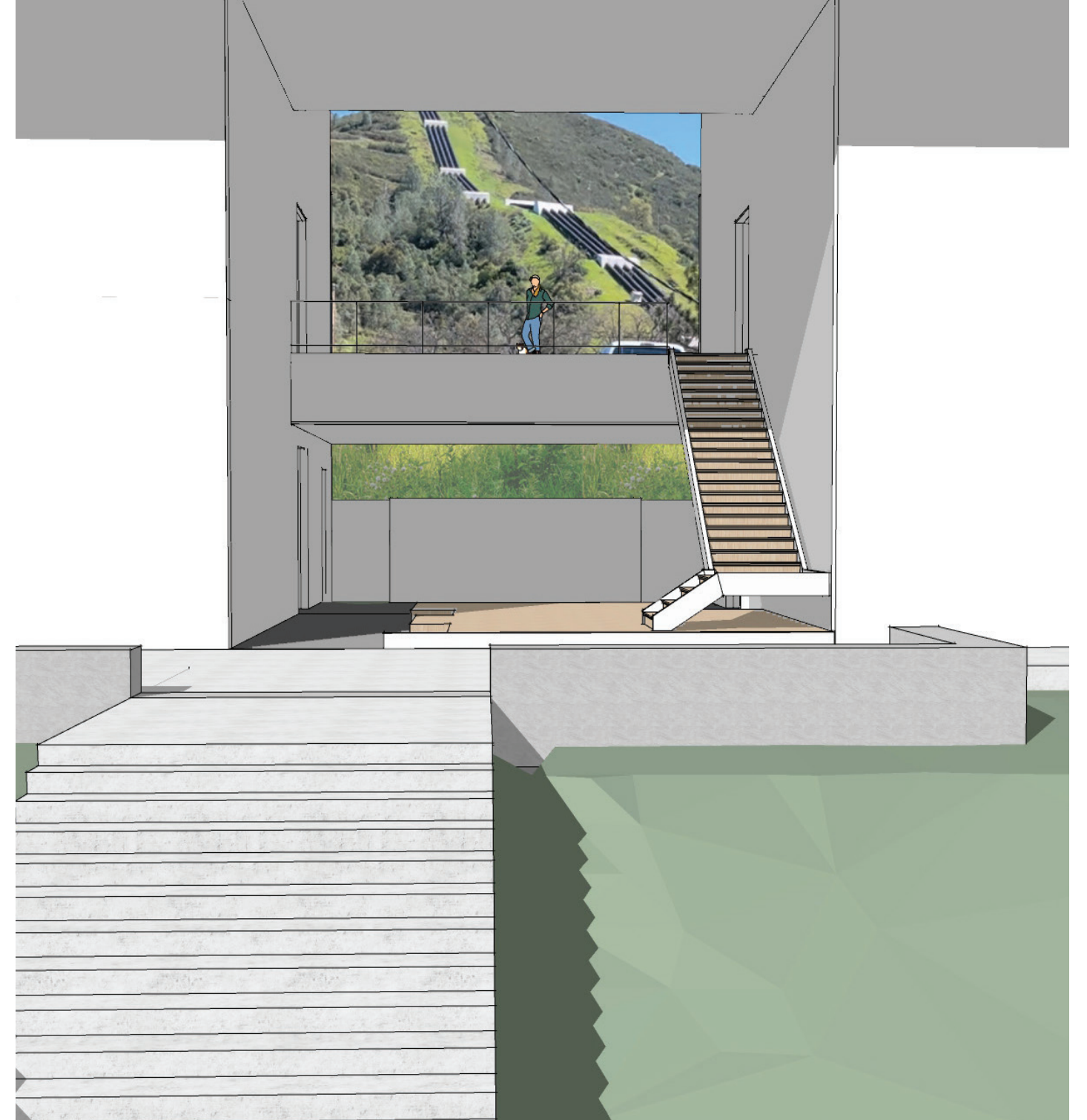


L1



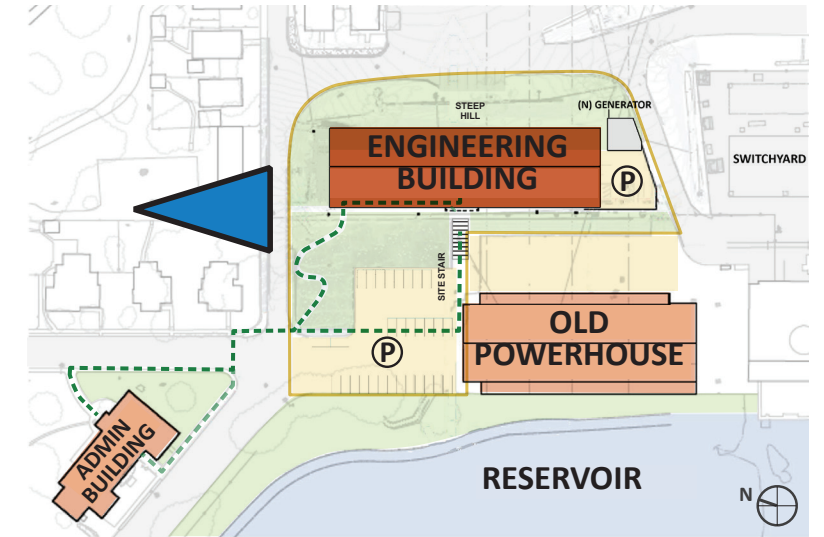


# Massing Concept



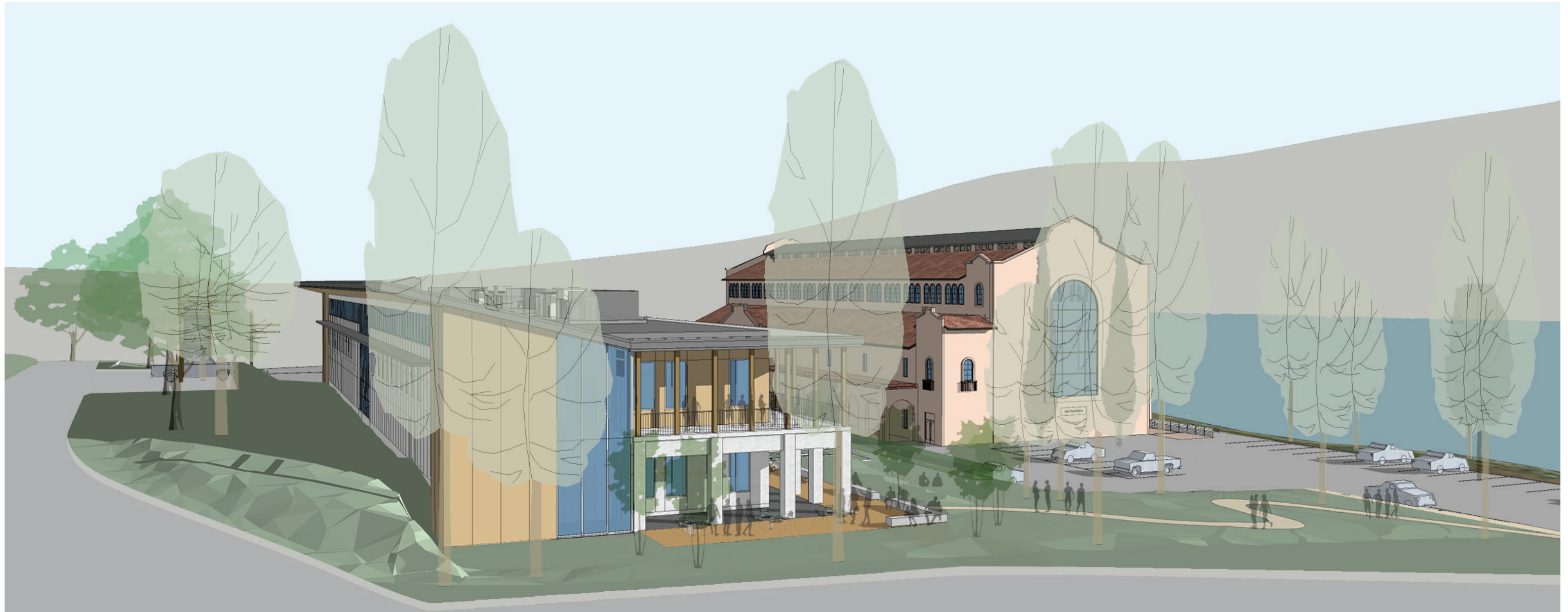
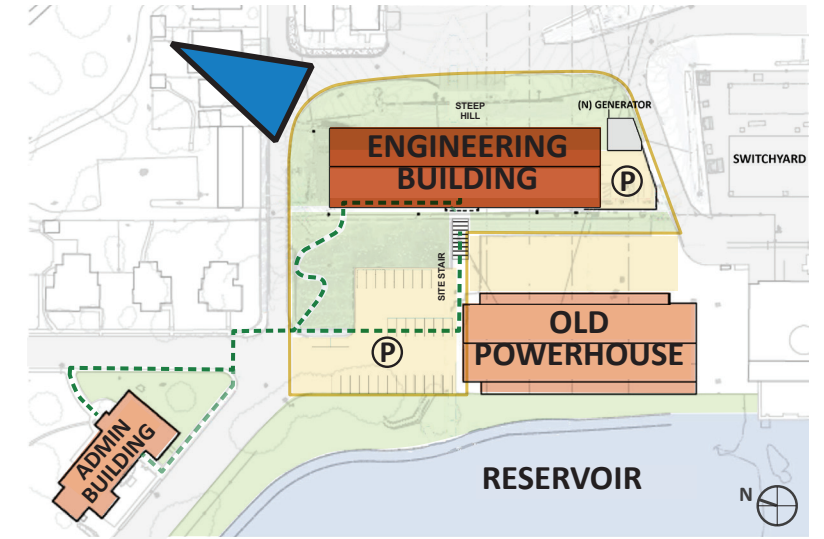


# Looking South from Admin Pathway



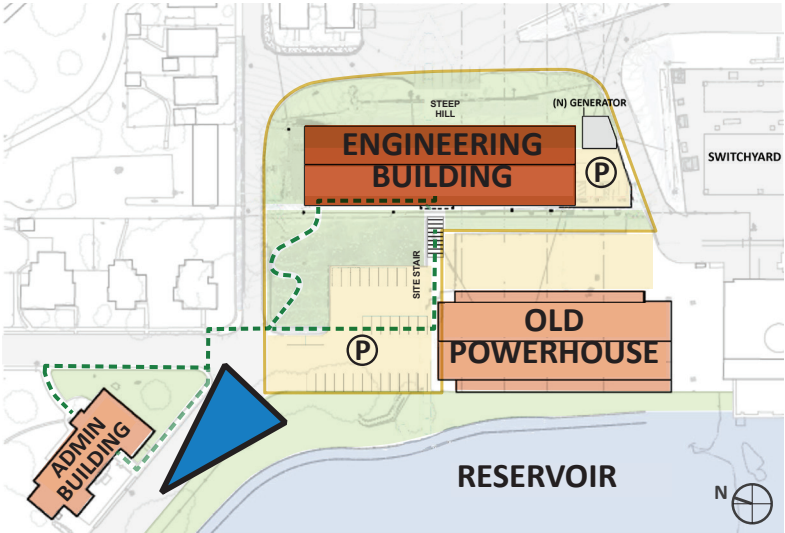


# Looking Southeast to Reservoir





# View Approaching Campus from Main Road (looking east)

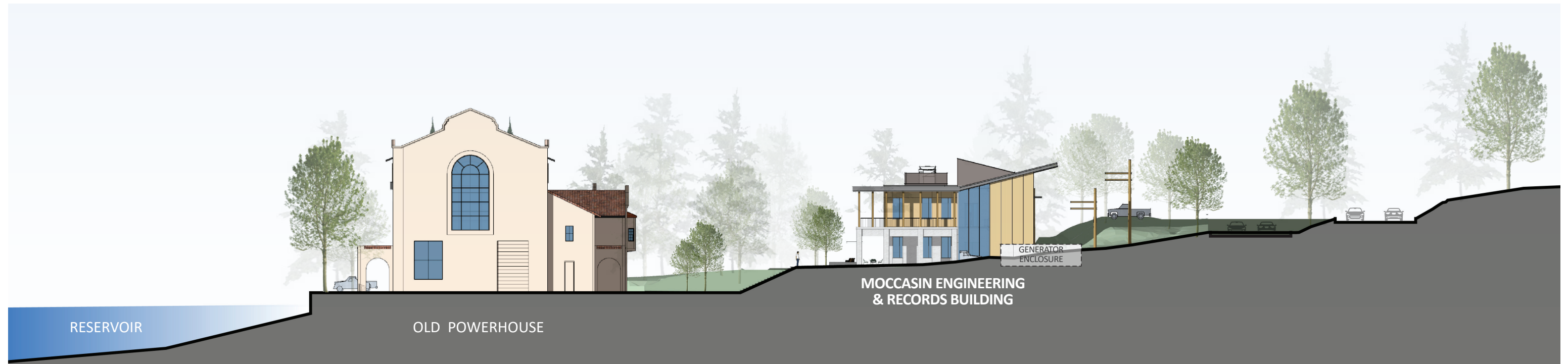




# West Facade Studies + Old Powerhouse



NORTH ELEVATION

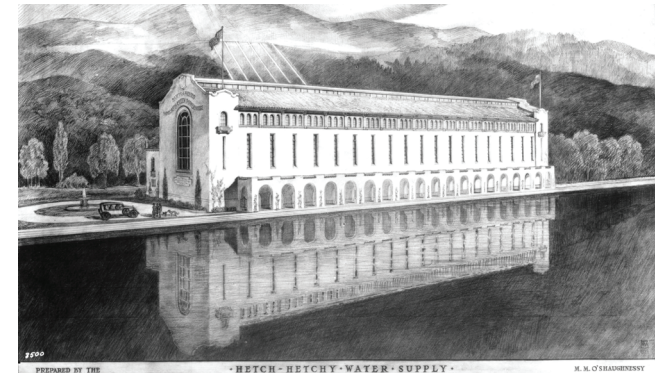
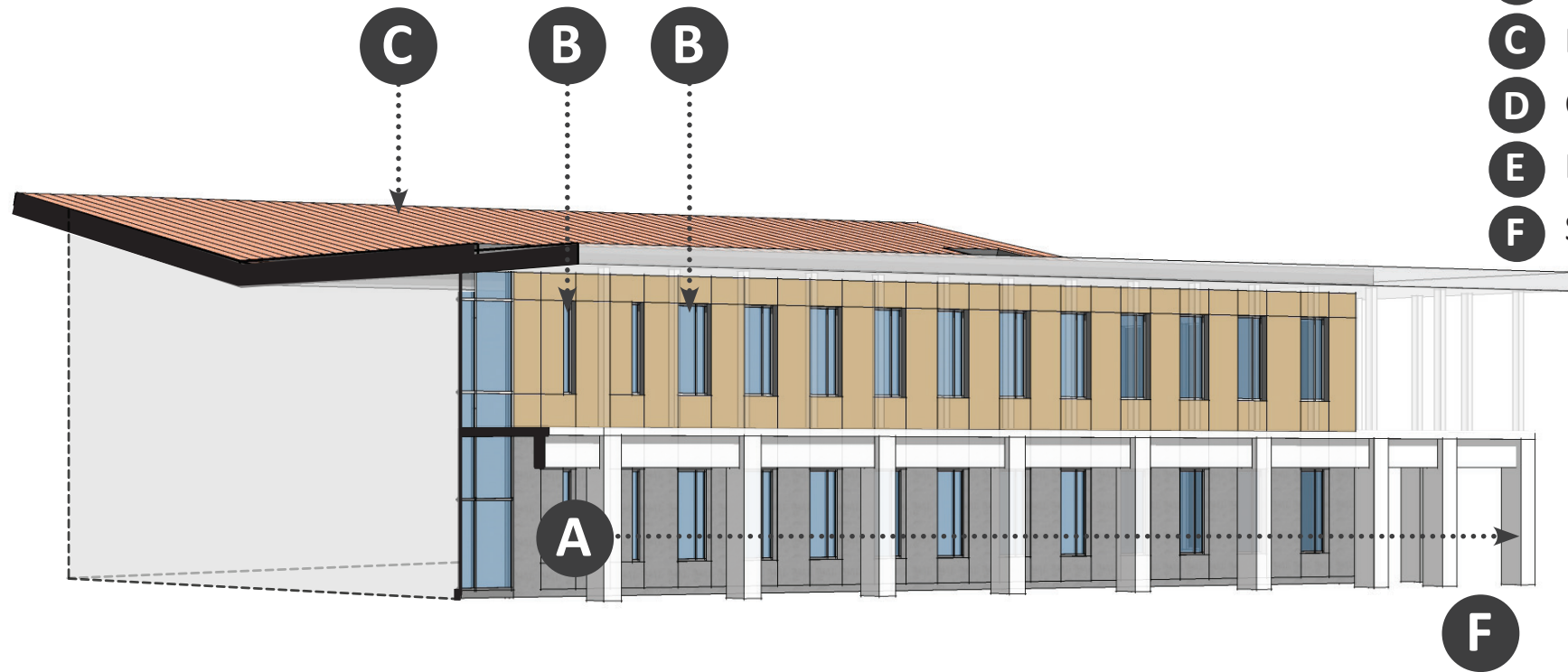


SOUTH ELEVATION



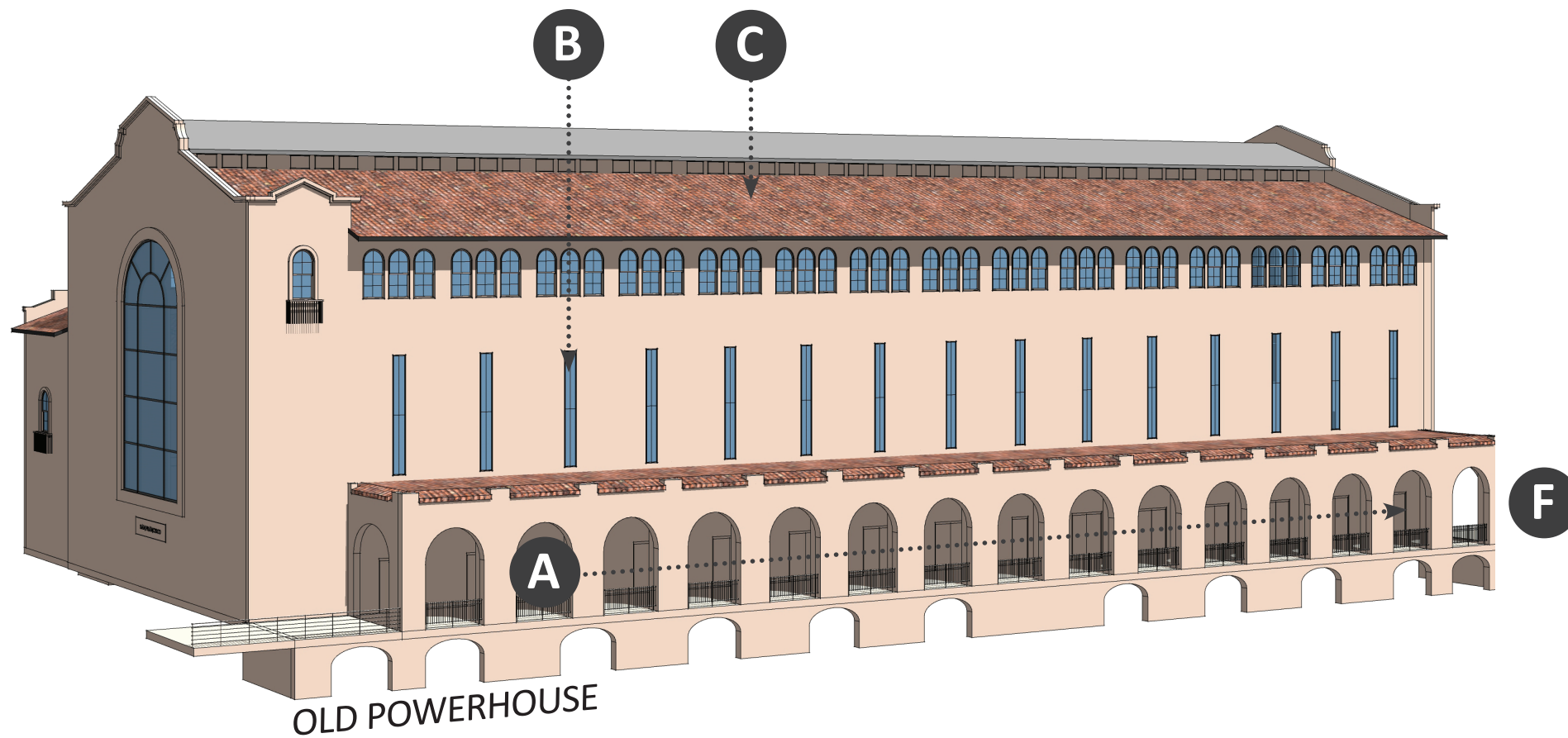
# West Facade Studies + Old Powerhouse

- A** Colonnade
- B** Vertical Window Expressions
- C** Roof Color
- D** Clerestory
- E** Primary windows at end of volume
- F** Strong Base



PREPARED BY THE BOARD OF PUBLIC WORKS · PROPOSED · MOCCASIN · CREEK · POWER · HOUSE · CITY ENGINEER · SAN FRANCISCO · 1923 · H. A. MITCHELL, ARCHITECT

**COLONNADE AT OLD POWERHOUSE**



**PROTECTED PATHWAYS**



**COLONNADES ON TWO FLOORS**



# Materials Palette



1 PRECAST CONCRETE



2 WHITE FIBER CEMENT PANEL



3 TERRACOTTA PANEL OR FIBER CEMENT PANEL



4 WOOD GRAIN METAL SOFFIT



5 METAL ROOF



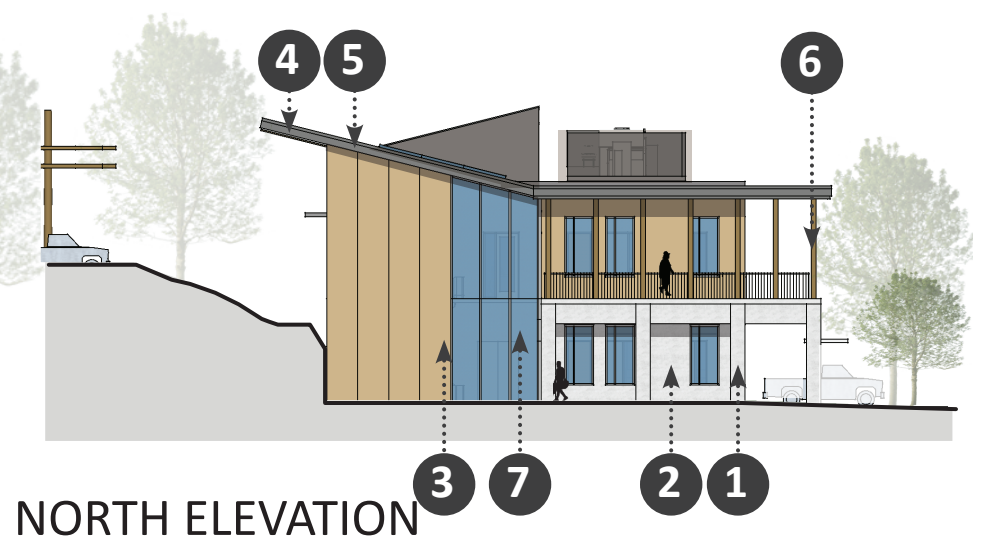
6 PAINTED STEEL COLUMNS



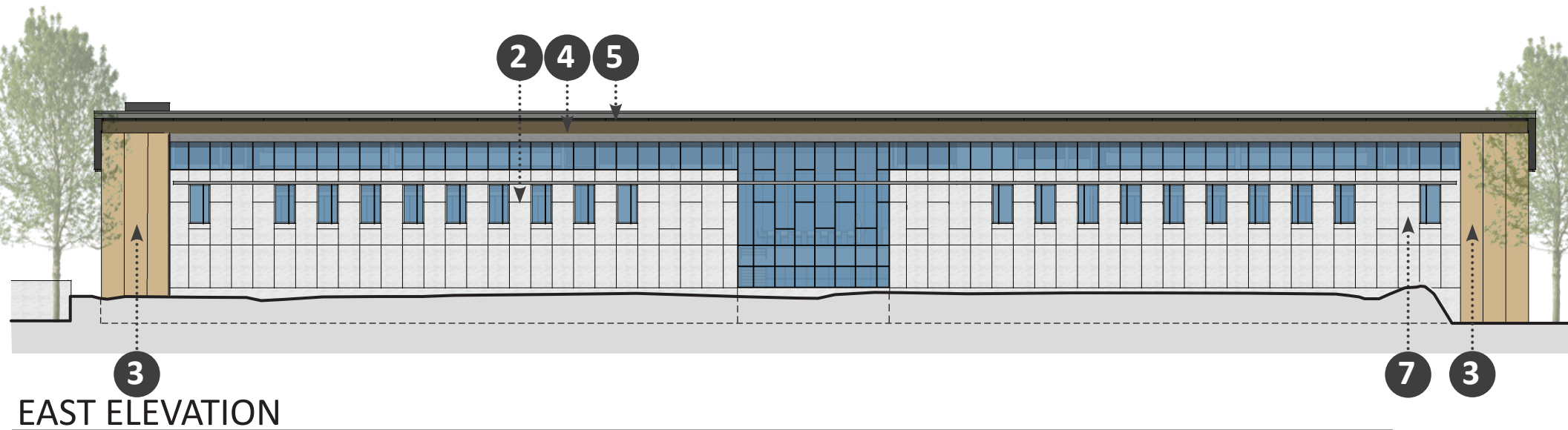
7 CURTAIN WALL/ STOREFRONT



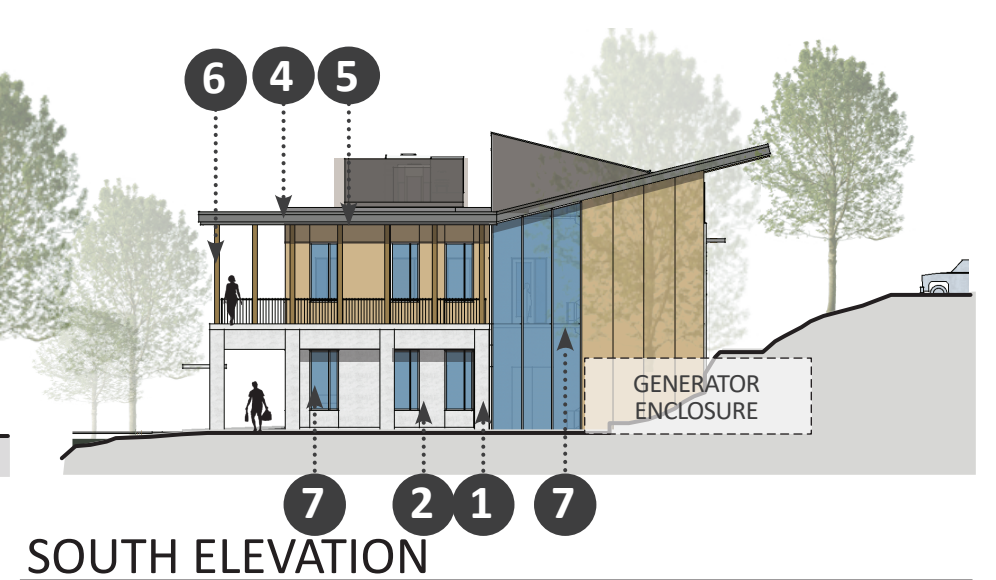
WEST ELEVATION



NORTH ELEVATION



EAST ELEVATION



SOUTH ELEVATION

0 16' 32' SCALE: 1/32" = 1'-0"

LANDSCAPE








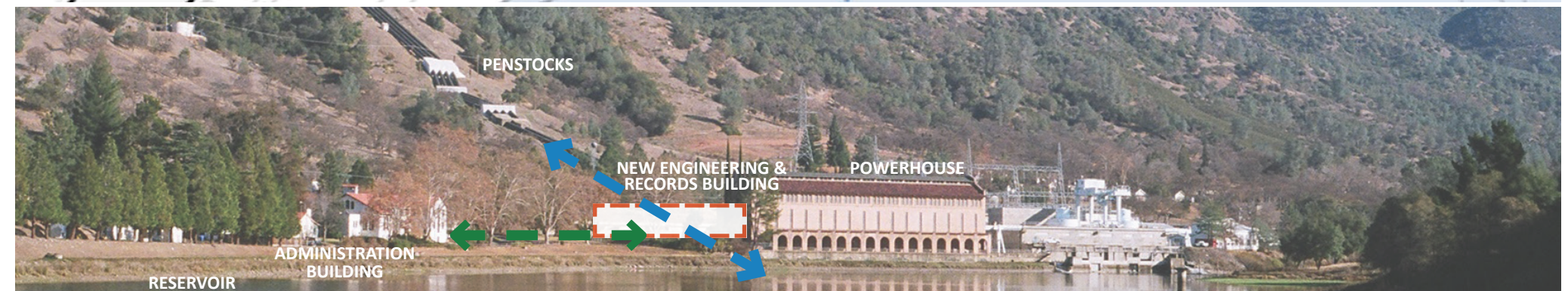
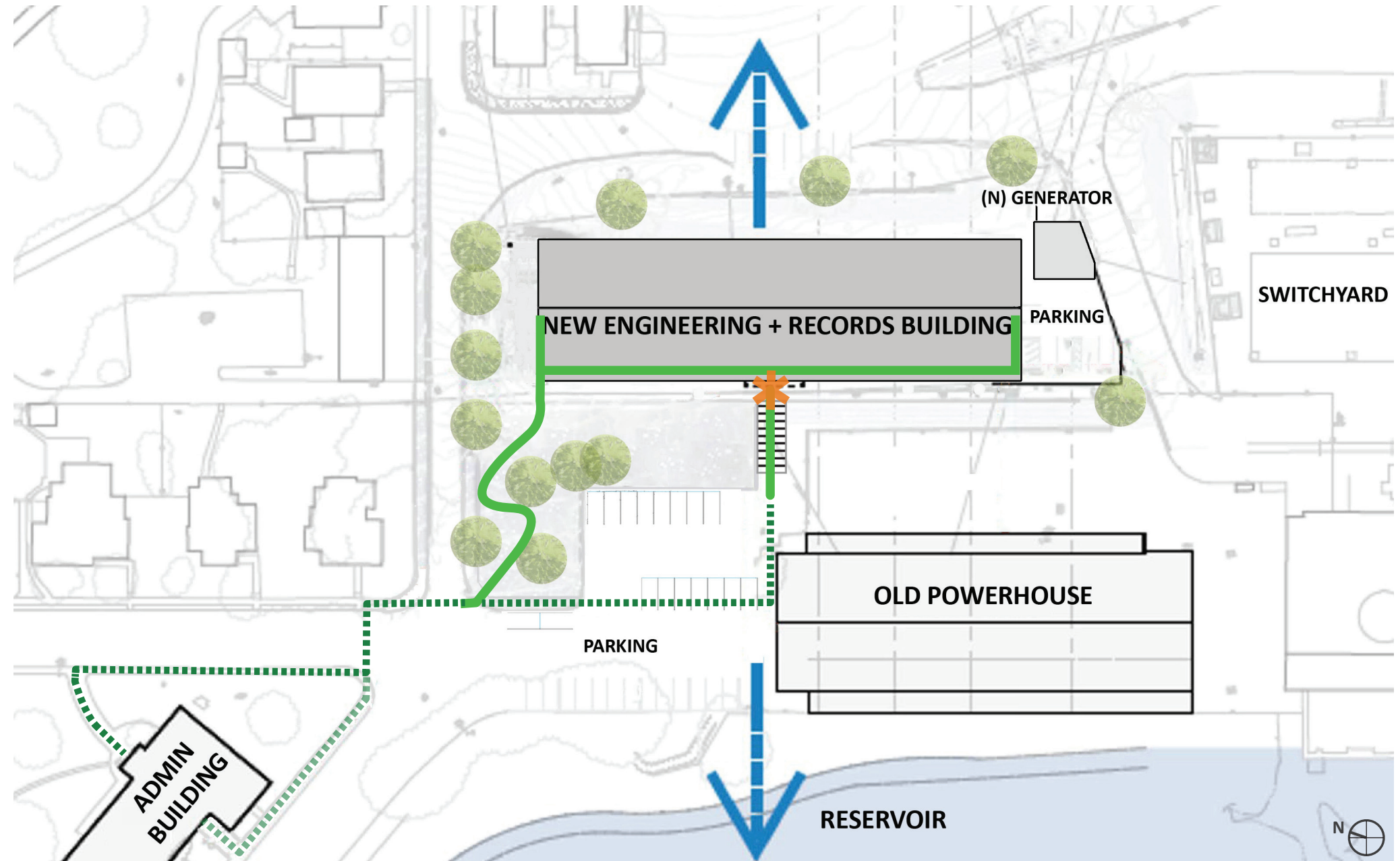
# Landscape Location + Context

ELEVATION: 935'

ECOREGION: Central California Foothills

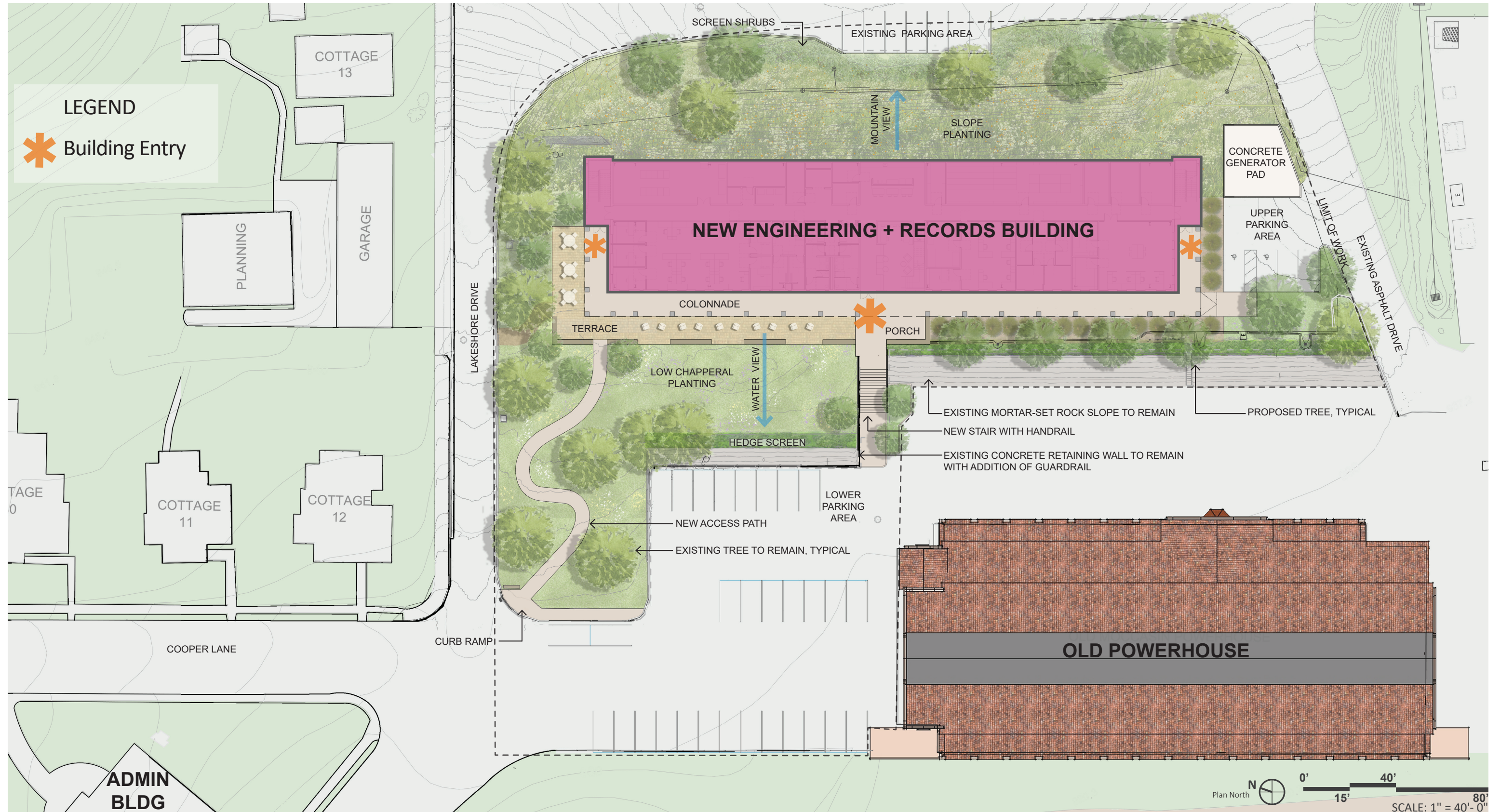
## LEGEND

-  New Pedestrian Circulation
-  Existing Pedstrian Circulation
-  Significant Views
-  Main Entry
-  Existing Trees



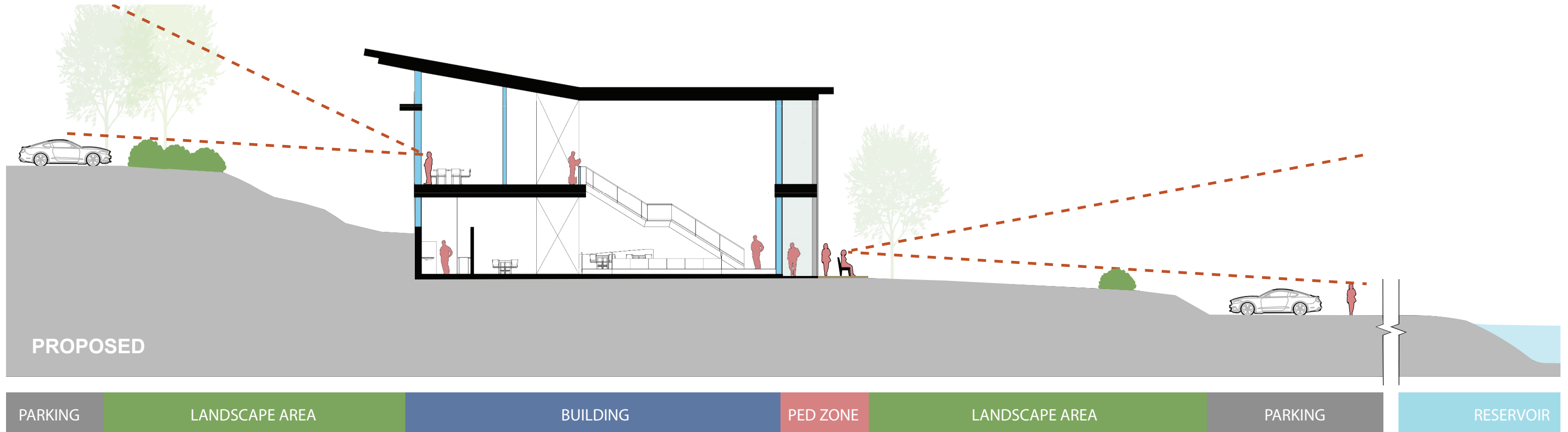
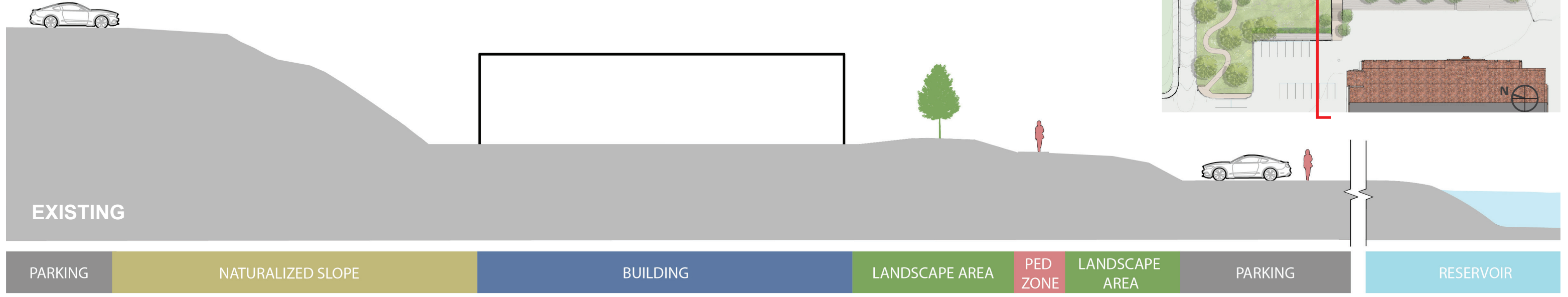
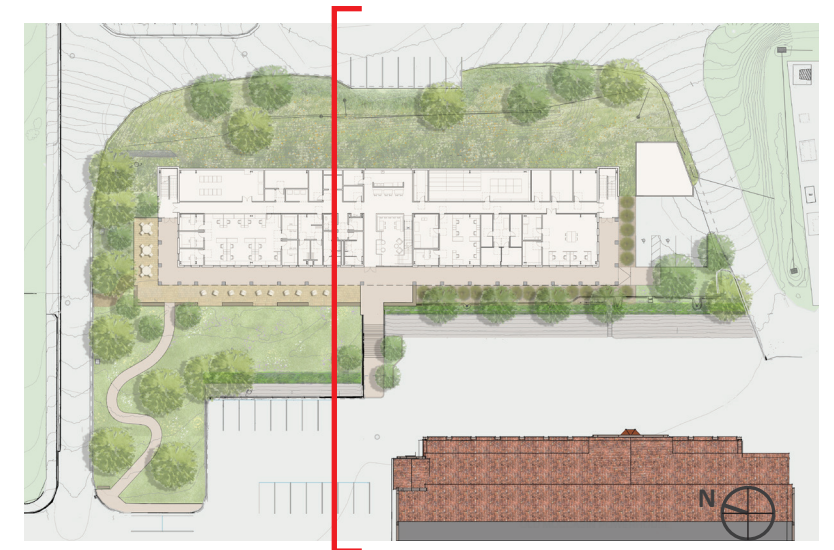


# Landscape Plan





# Landscape Architecture Sections





# Landscape View





# Landscape Materiality



1

CONCRETE WITH  
INTEGRAL COLOR AND  
SEEDED AGGREGATE



2

CLAY PAVERS



3

LOW WALL  
RECLAIMED TIMBER



3

LOW WALL  
SIERRA WHITE GRANITE



4

PICKET GUARDRAILS



5

TERRACE SEATING

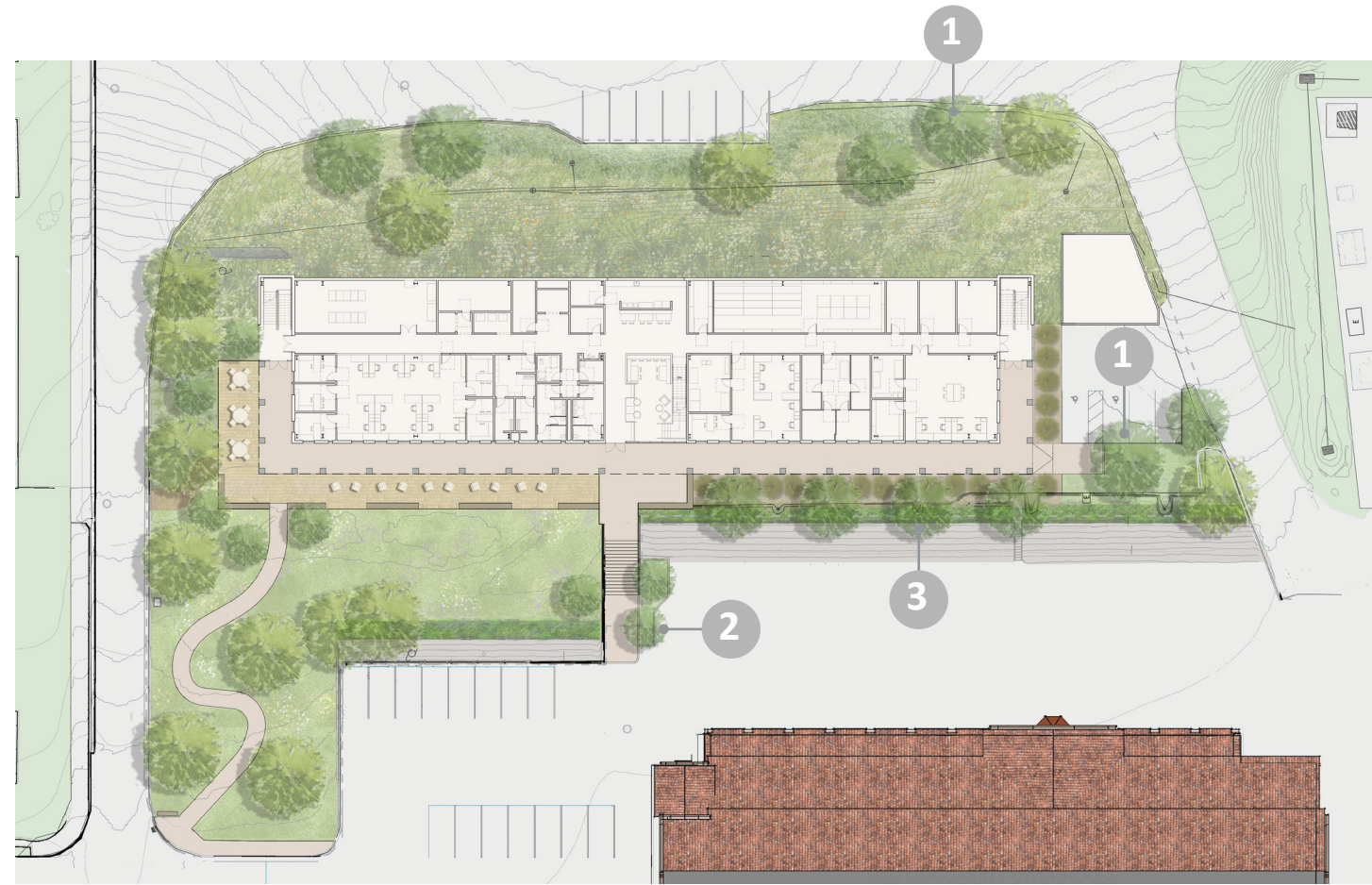


6

PATIO TABLES + CHAIRS



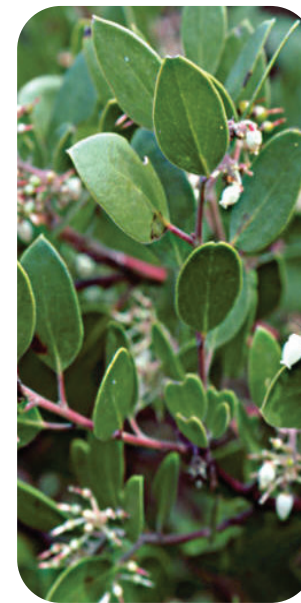
# Tree Palette



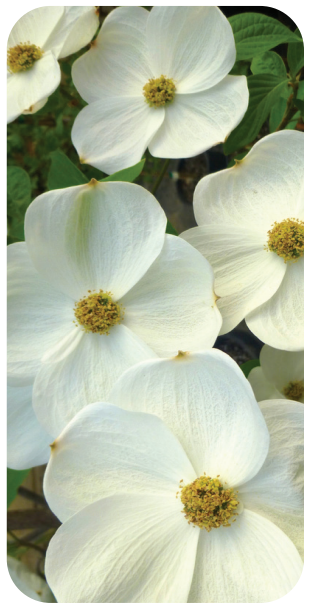
1 BLACK OAK  
QUERCUS KELLOGGII



2 COMMON MANZANITA  
ARCTOSAPHYLOS MANZANITA

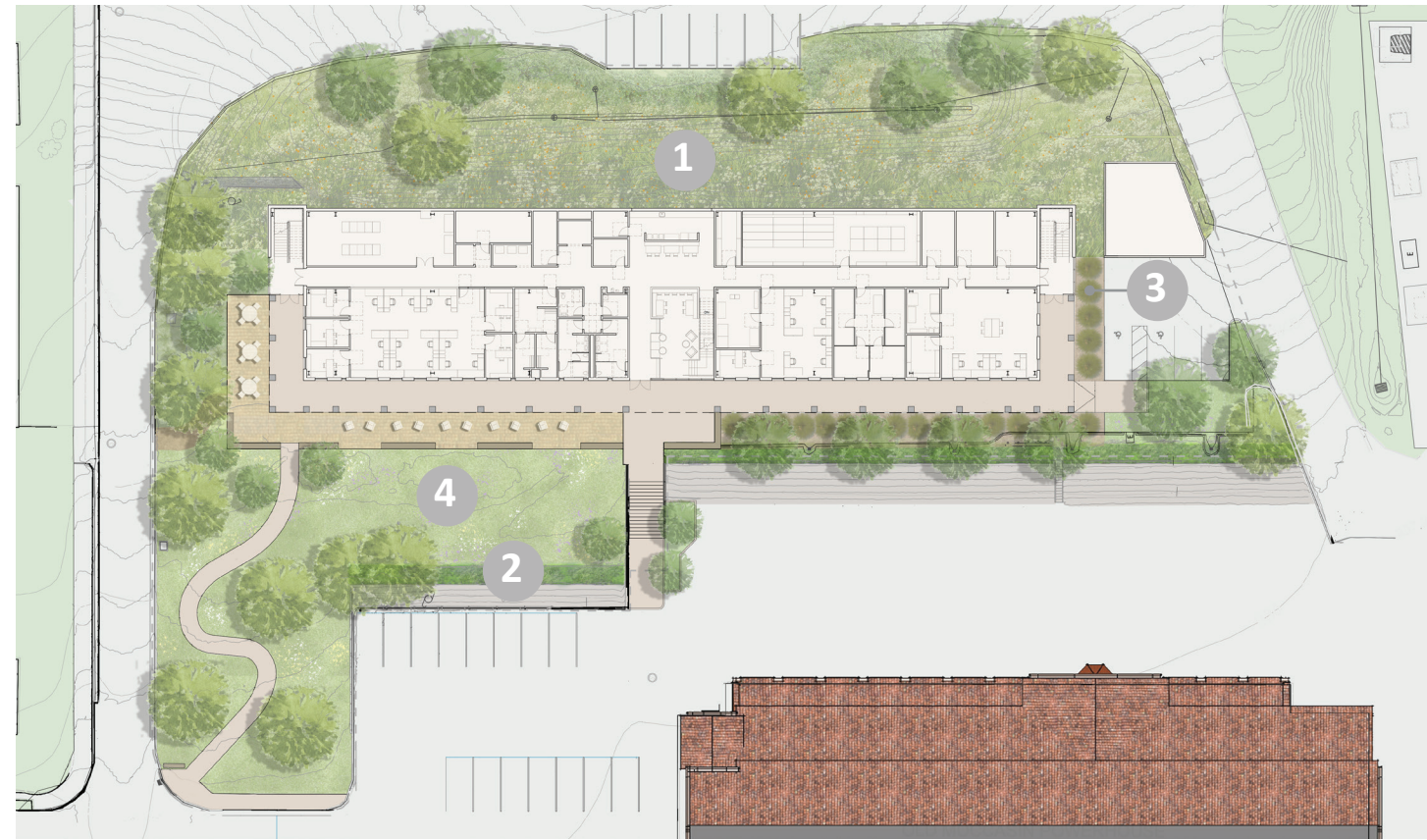


3 DOGWOOD  
CORNUS 'EDDIES WHITE WONDER'

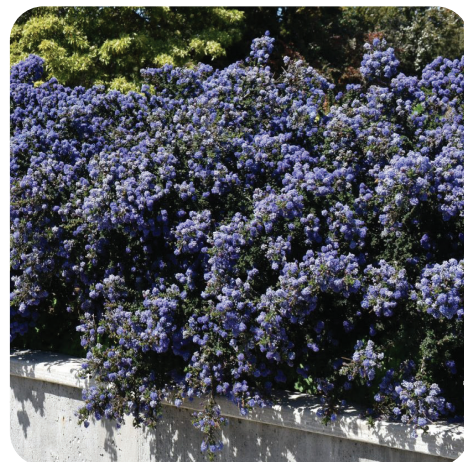




# Understory Palette



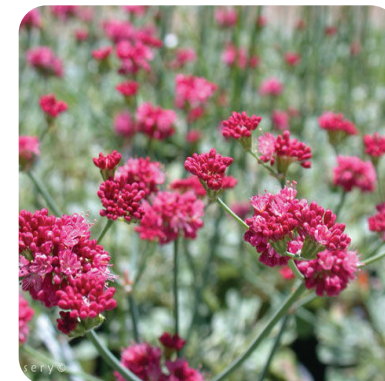
**1** SEED MIX  
*Stipa pulchra*  
*Bromus carinatus*  
*Stipa cernua*  
*Achillea millefolium*  
*Eschscholzia californica*



**2** SCREEN HEDGE  
*Ceanothus* SPP



**3** ARCHITECTURAL PLANTING  
*Muhlenbergia rigens*



**4** CALIFORNIA LOW CHAPARRAL  
*Eriogonum grande rubescens*  
 Showey Milkweed  
*Salvia clevelandii*  
*Ceanothus Frosty Blue*





# Thank You

