

SAN FRANCISCO FIRE DEPARTMENT DIVISION OF TRAINING SCHEMATIC DESIGN

October 11, 2024

DLRGROUP
RossDrulisCusenbery

KUTranieri
architects

abercrombie
PLANNING+DESIGN



BUREAU OF ARCHITECTURE
BUREAU OF LANDSCAPE ARCHITECTURE



SAN FRANCISCO CIVIC DESIGN REVIEW- PHASE 1

PROJECT SITE

SITE LOCATION	1236 Carroll Avenue, San Francisco
SITE AREA	+/- 8 ACRES
TOTAL PRIMARY BUILDINGS	12
PARKING	116 Spaces

BUILDING AREA PER TYPE

OCCUPIED BUILDINGS	58,432 SF
UNOCCUPIED TRAINING STRUCTURES	53,134 SF
CAMPUS SHARED SPACE	4,132SF
APPROXIMATE TOTAL BUILDING AREA	147,531 SF

PUBLIC BENEFITS

PUBLIC ART	Multiple Opportunity Areas
LANDSCAPE PERIMETER	1,600 Linear Feet
ACTIVATED CIVIC BUILDING FRONTAGE	500 Linear Feet
ACTIVITY VIEW ZONES	Minimum 3



Hunters Point Ridge

Hunter's Point

South Basin

PROPOSED SITE

FORMER CANDLESTICK PARK SITE

Bay View Hill



CARROLL AVE & FUTURE ALICE GRIFFITH HOUSING

PROJECT SITE

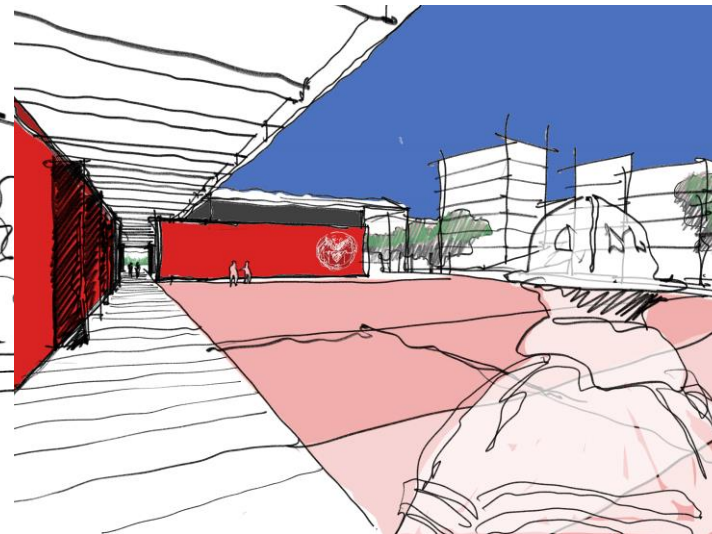
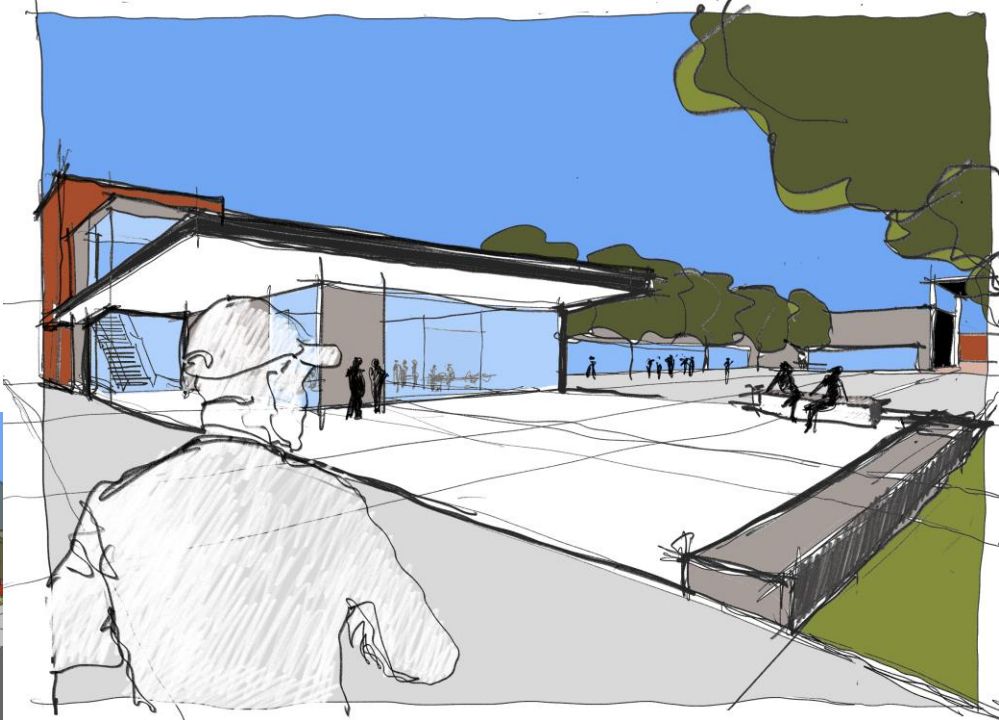
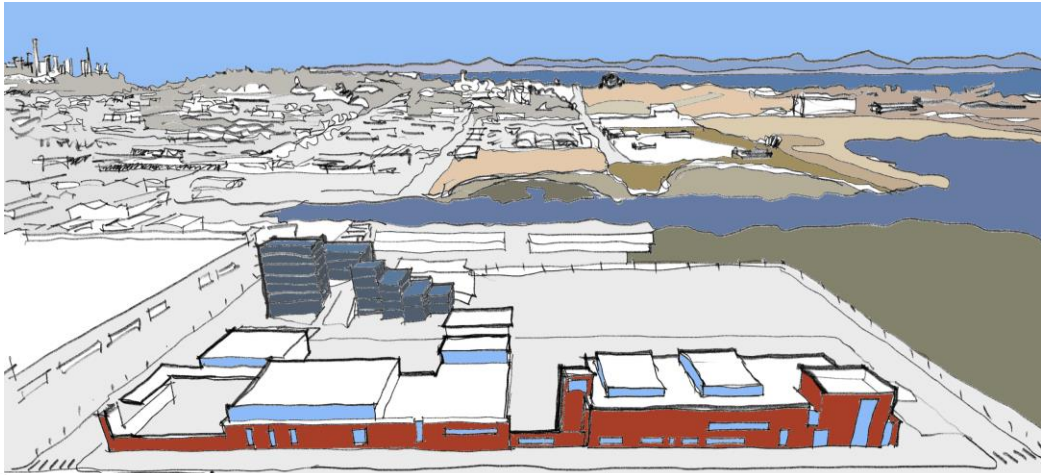
CANDLESTICK POINT STATE RECREATION AREA





Design Process

The Schematic Design process focused on receiving meaningful contributions from both user and neighborhood stakeholders to co-define the project vision.



This phase featured an exploratory collaborative design process implemented using free-hand drawings and frequent workshops with the SFFD. The objective of *keeping it loose* was to engage the Fire Department as equal contributors in crafting the project vision.



Photograph of meeting with Alice Griffith Tenants Association/Council , 7/1/2024

Community Outreach Sessions

This phase also included community outreach meetings, providing the design team with an understanding of the aspirations and priorities of the project neighbors.

5/1/2024 - Bayview Citizen Advisory Committee

6/3/2024 - Bayview Hill Neighborhood Association

6/12/2024 - True Hope Church – 950 Gilman Ave

7/1/2024 - Alice Griffith Tenants Association/Council

Master Plan Concept

The master plan organization emulates the physical fabric of the neighborhood, providing an armature for a collection of outdoor educational quads.

Master Plan Strategy 01: Campus DNA



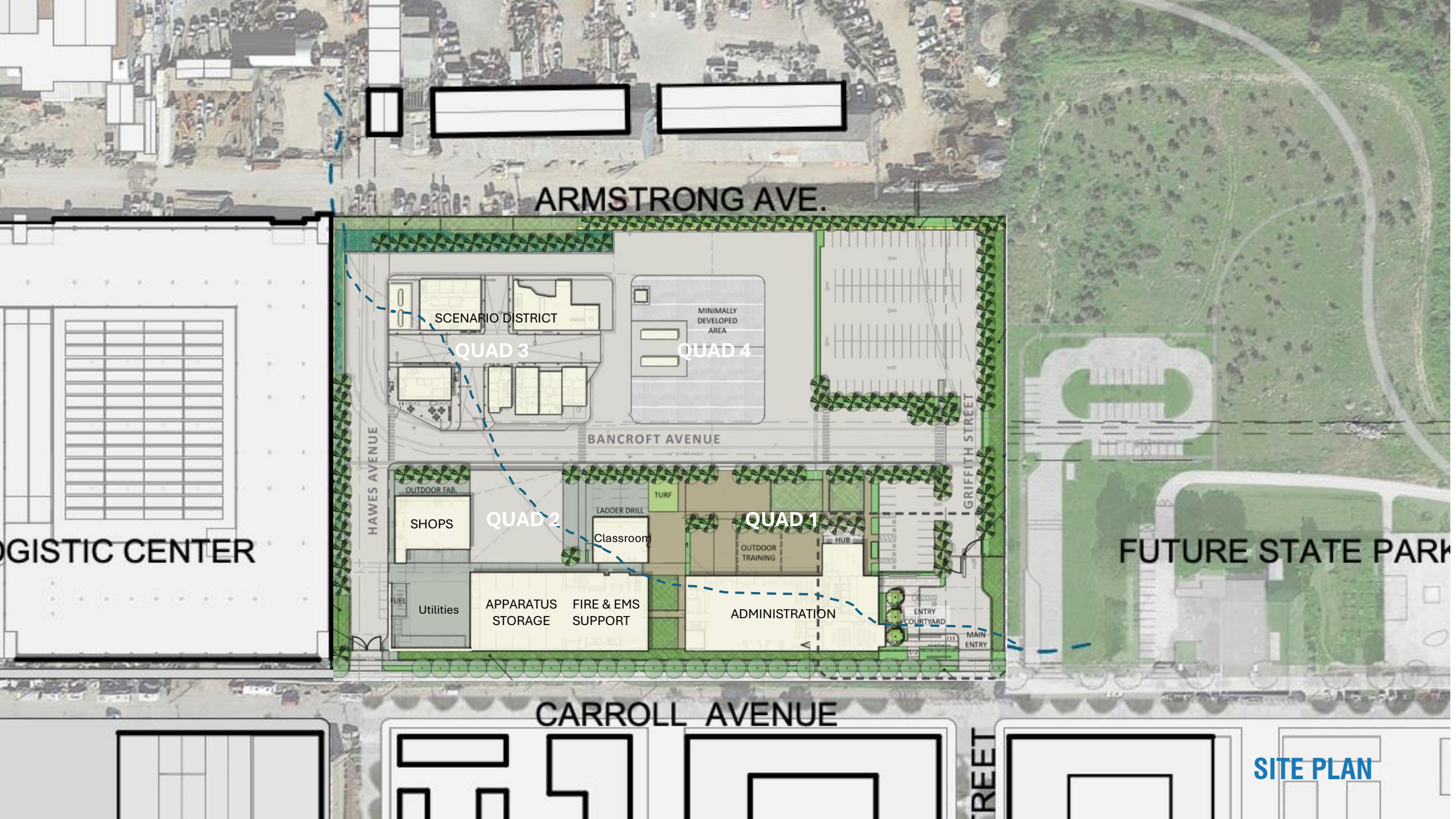
The underlying campus ordering system emulates the fabric of the neighborhood



The outdoor educational zones present as four distinct quadrangles

- *Quad 1* — Traditional Classrooms with outdoor interface
- *Quad 2* — Tactical/Operational
- *Quad 3* — Scenario District
- *Quad 4* — Outdoor/Adaptable Training Space and Vehicle Operations





ARMSTRONG AVE.

SCENARIO DISTRICT

QUAD 3

MINIMALLY DEVELOPED AREA

QUAD 4

BANCROFT AVENUE

HAWES AVENUE

GRIFFITH STREET

LOGISTIC CENTER

OUTDOOR FAB.

SHOPS

QUAD 2

LADDER DRILL

Classroom

TURF

QUAD 1

OUTDOOR TRAINING

HUB

FUEL

Utilities

APPARATUS STORAGE

FIRE & EMS SUPPORT

ADMINISTRATION

ENTRY COURTYARD

MAIN ENTRY

FUTURE STATE PARK

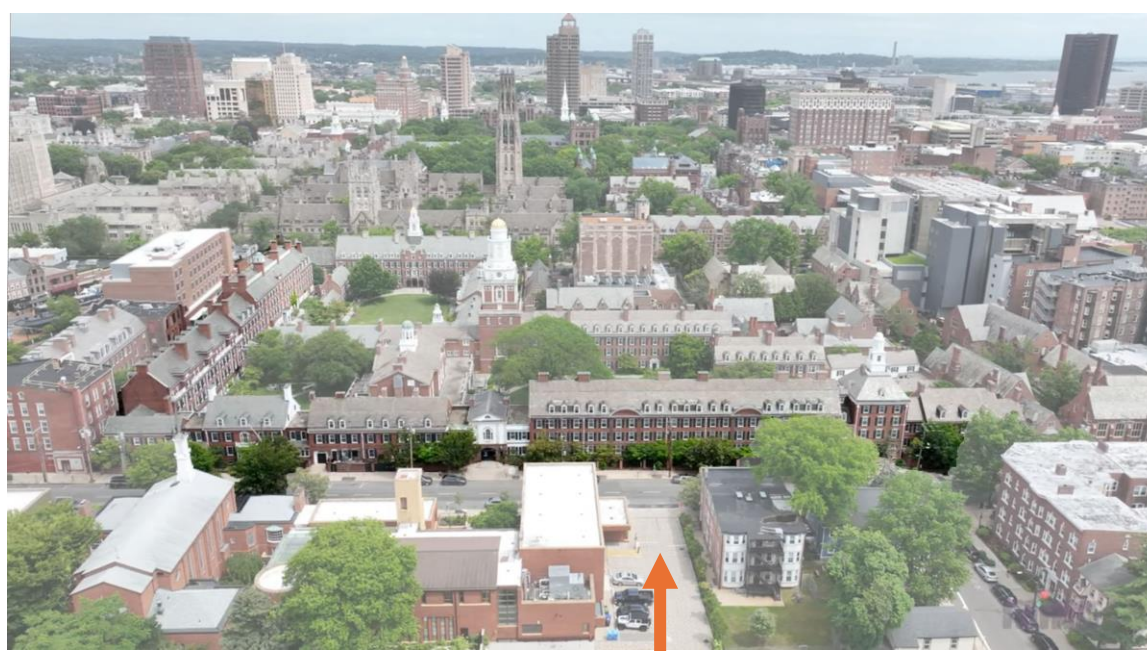
CARROLL AVENUE

STREET

SITE PLAN

Schematic Massing Concept

A unified presence defines the public image for the fire training campus



Precedent example,
New Haven CT

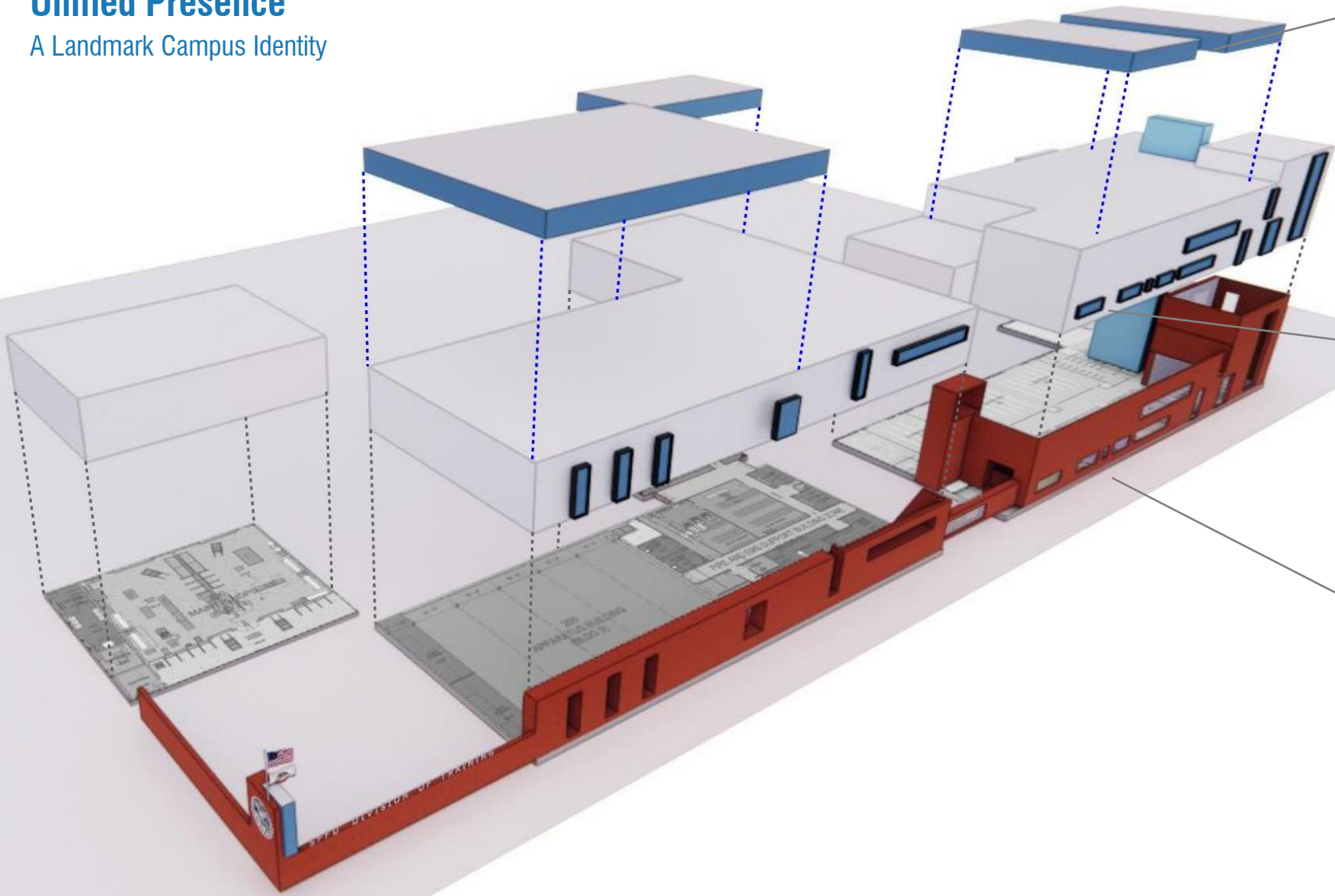


Concept sketch,
view from the south

The preferred massing concept for the Carroll Avenue frontage connects a collection of diverse building types—a garage, a support building, an office building and a utility yard—into a **consistent, elegant and memorable civic gesture**. Nicknamed *unified presence*, this massing approach aims for visual continuity and a distinct campus identity.

Unified Presence

A Landmark Campus Identity



Thematic and functional design elaboration @ top of buildings in the form of pop-up clerestory light monitors

Variety is achieved through diverse pattern of window openings

Continuous brick perimeter offers a landmark-scale identity to the training campus

The character of the street-facing façade balances variety with continuity to craft a bold **landmark campus identity**.







Precedent / Material Concept

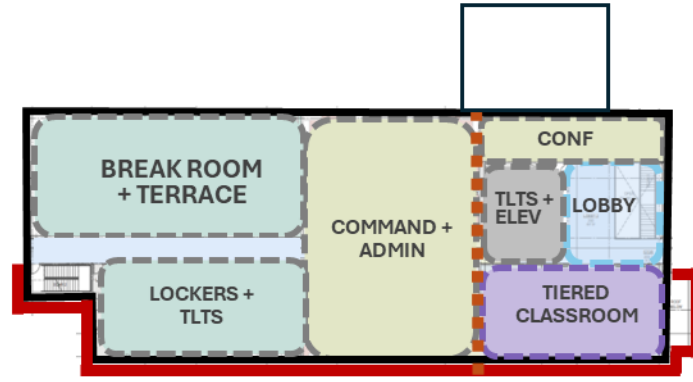
Brick as a façade material has important local historic precedent. As both a legacy material in the history of the fire department, and a legacy material in the history of the nearby San Francisco shipyards, brick is where **these two histories converge**.



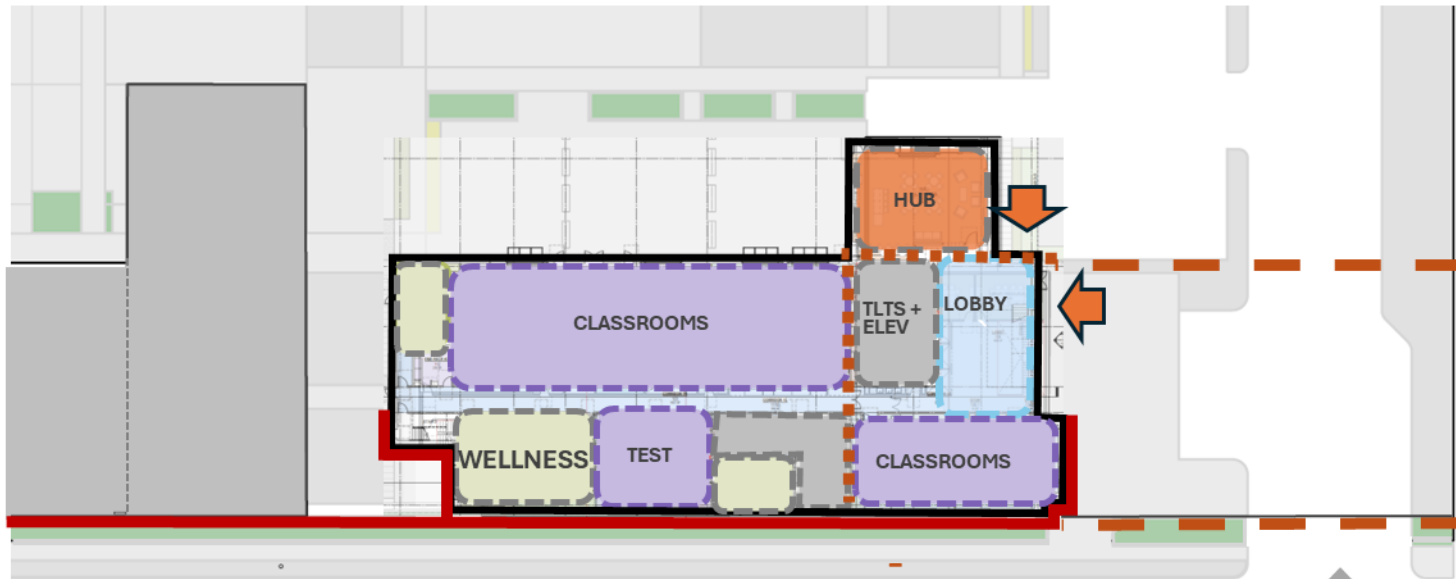
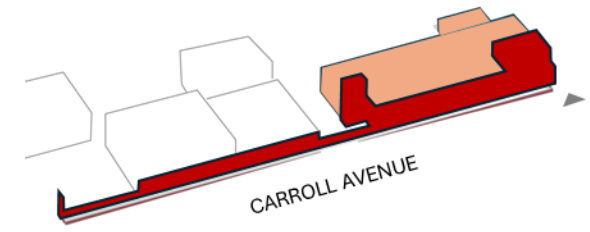
Administration and Classroom Building



Admin / Classroom



SECOND FLOOR



CARROLL AVENUE

FIRST FLOOR



KEY PLAN



Admin / Classroom

Carroll Ave

- Continuous Carroll Ave façade that unifies the campus
- Increasing scale marks campus entry
- Tower as facility beacon & identity
- Roof forms for daylight + building profile that relate to the Apparatus building
- Pedestrian oriented windows compatible with neighboring context



Admin / Classroom

Training Ground View

- Increasing scale marks campus entry
- North facing glazing provides views and daylight
- Continuous cladding on north, east & west elevations
- HUB separates training from public side of site
- Building access from parking lots
- Site Circulation outside of classroom exterior training



Admin / Classroom

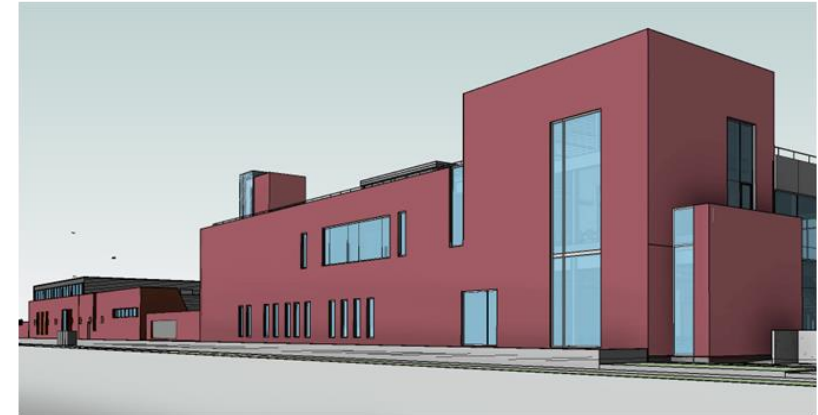
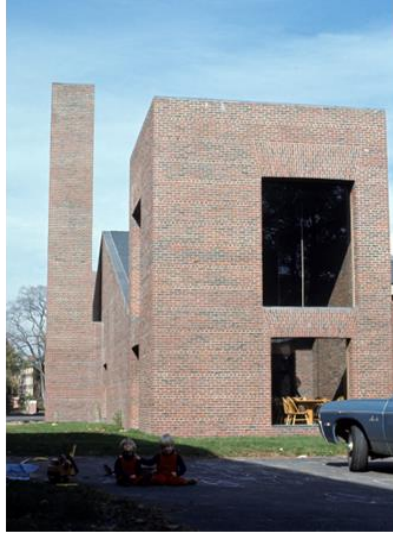
Training Ground View

- Exterior training separated from site circulation
- Stair tower is a beacon and facility symbol
- Integrated Breakroom terrace
- Training area seating dividers
- Ambulance access to EMS classroom



East Tower

Identity & Beacon



Campus Entry

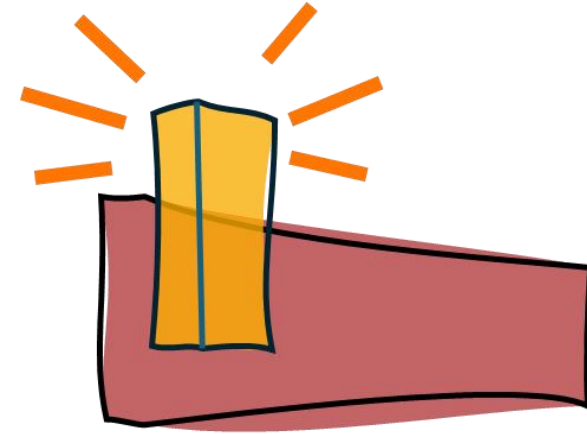
View To West



Create prominent and identifiable campus entrances
Tower and public display elements to reinforce the SFFD identity

Stair Tower

Identity & Beacon



Carroll Avenue

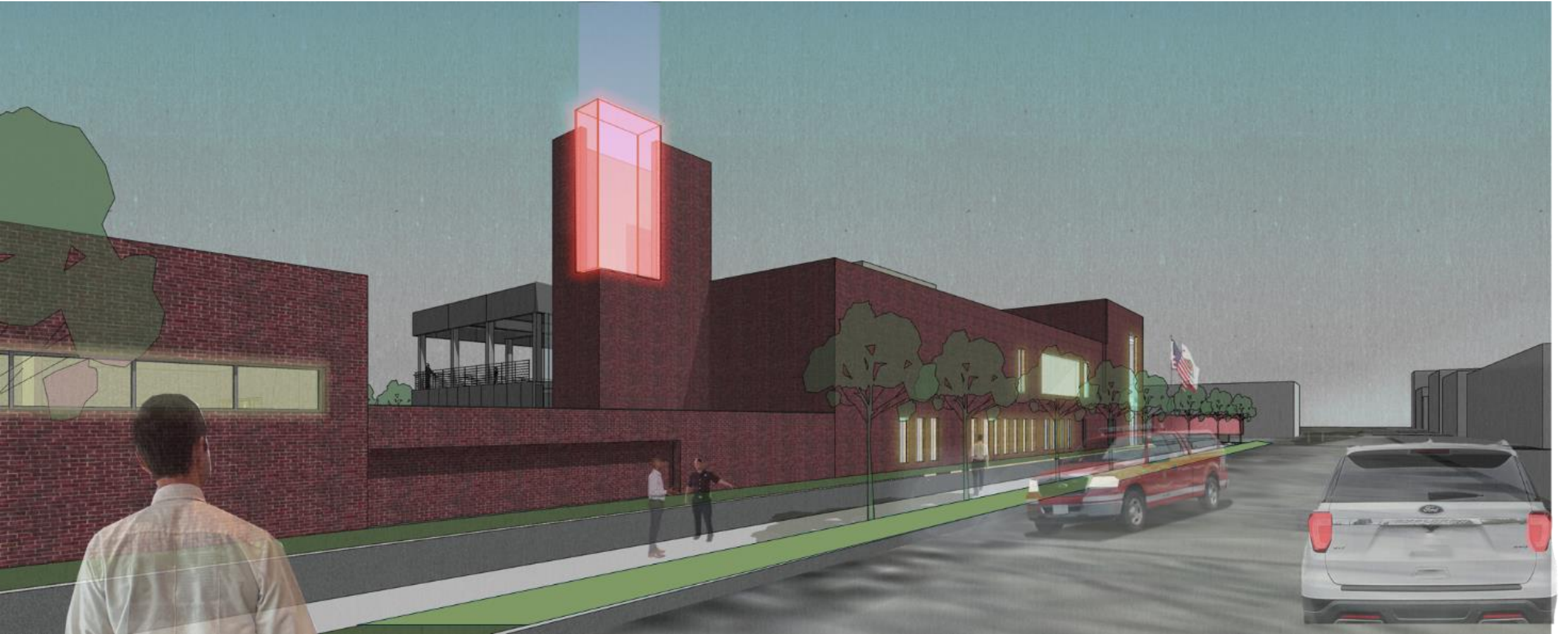
Day View To East

- Continuous Carroll Ave façade that unifies the campus
- Increasing scale marks campus entry
- Tower as facility beacon & identity
- Roof forms for daylight + building profile that relate to the Apparatus building
- Pedestrian oriented windows compatible with neighboring context



Carroll Avenue

Night View To East



Support Bldg / Apparatus Storage / Shops



Recruit / Apparatus / Shops



Recruit / Apparatus / Shops



Recruit / Apparatus / Shops



Scenario Training District



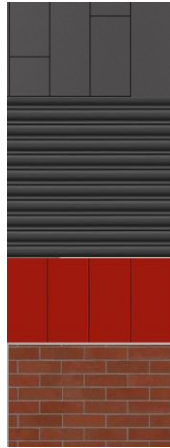
Quad 03



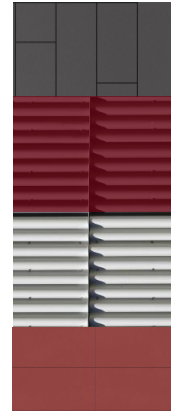
Materials and Exterior

Brick represents the preferred public-facing material. Brick brings with it an important local legacy: it evokes the history of both San Francisco's fire stations as well as the historic waterfront infrastructure.

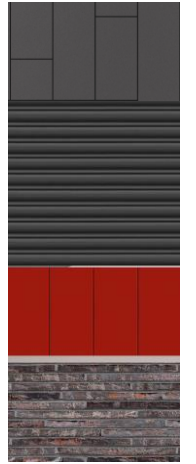
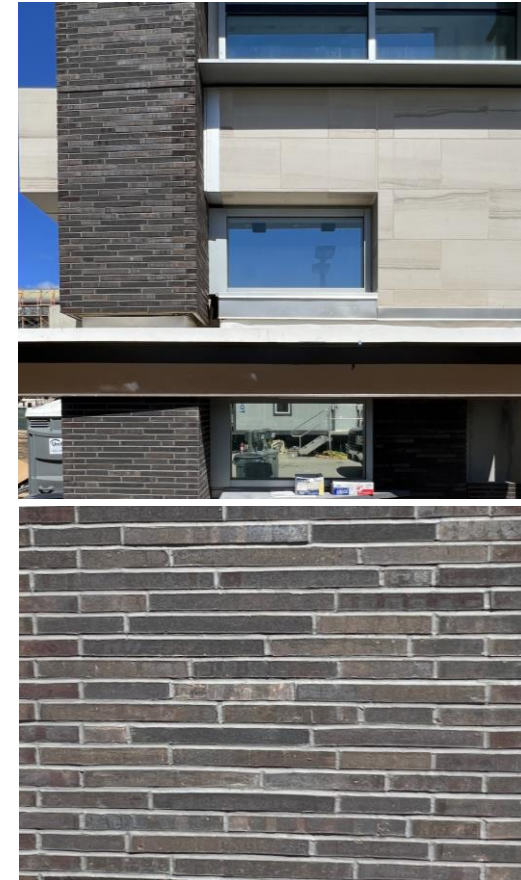
Materials Scenarios



01



02



03



A Unified Presence: Streetscape, Landscape and Art Locations



LEGEND

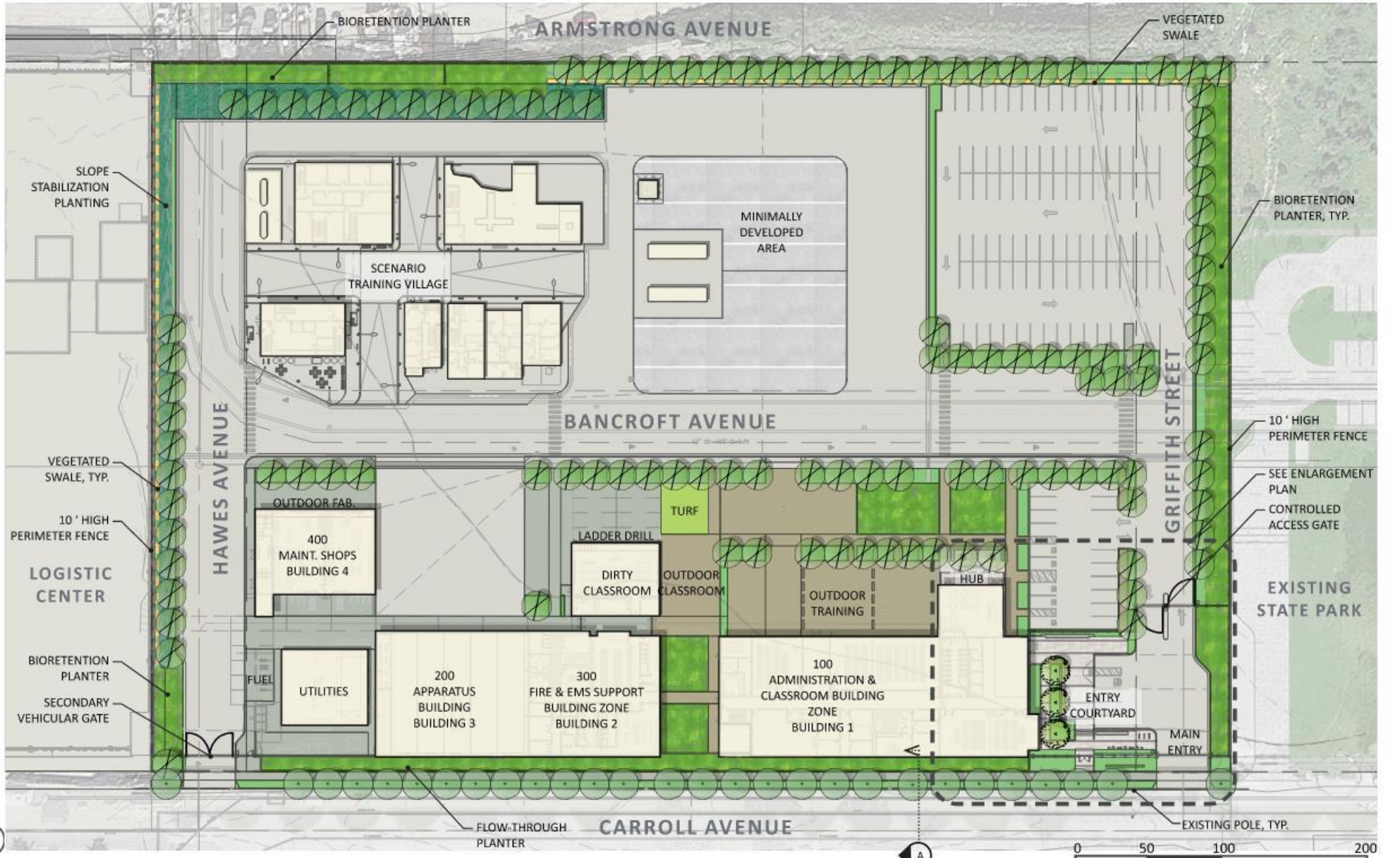
-  VEGETATED SWALE
-  BIORETENTION PLANTER
-  ARTIFICIAL TURF
-  SLOPE STABILIZATION PLANTING
-  ORNAMENTAL PLANTING
-  SPECIAL PAVING
-  GRAVEL AREA
-  CONCRETE PAVING
-  VEHICULAR PAVING
-  INTEGRAL COLOR PAVING
-  STREET TREE
-  COLUMNAR TREE
-  SPECIMEN TREE

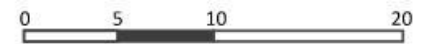
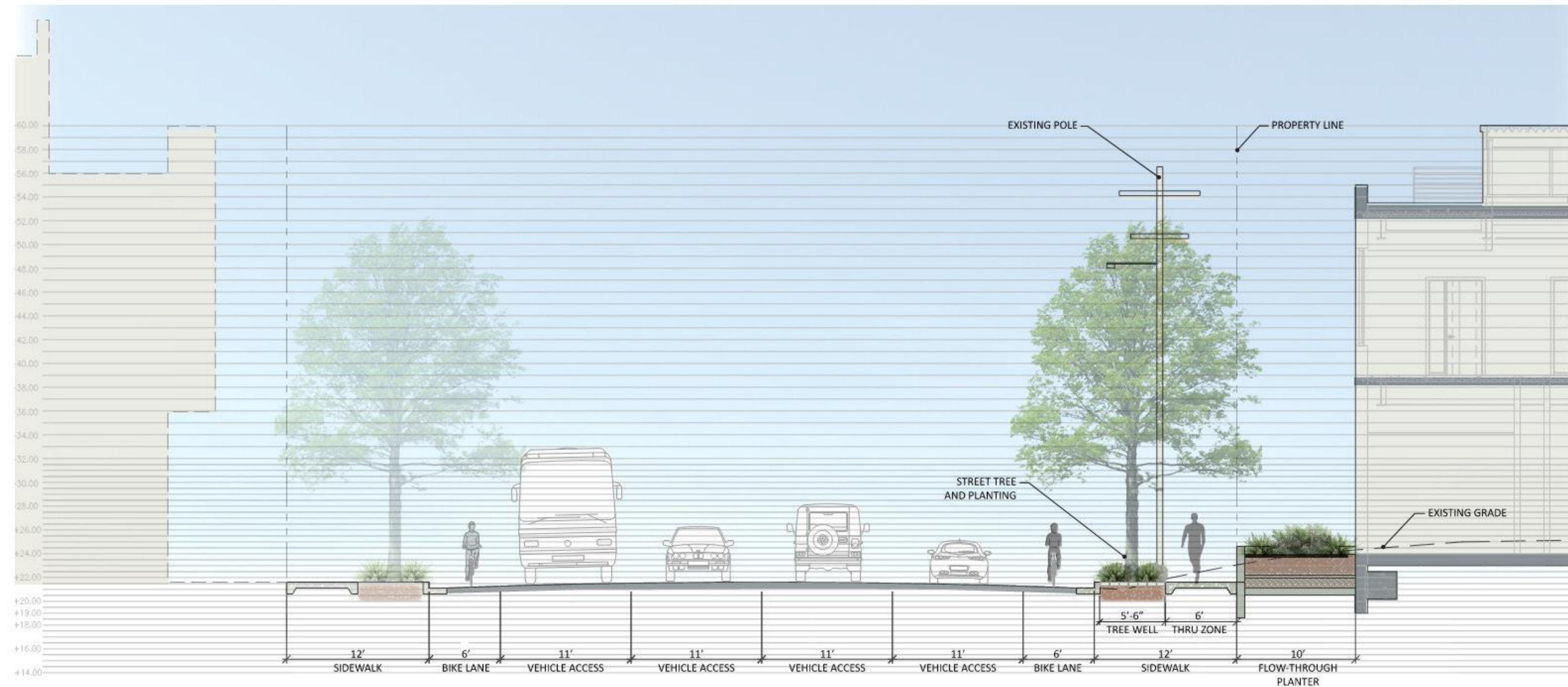


PERIMETER FENCE



PEDESTRIAN GATE





CARROLL AVENUE SECTION A





CARROLL AVENUE STREETScape VIEW



1 PLANTER WITH SEATING



2 SPECIAL PAVING



3 STAIRS



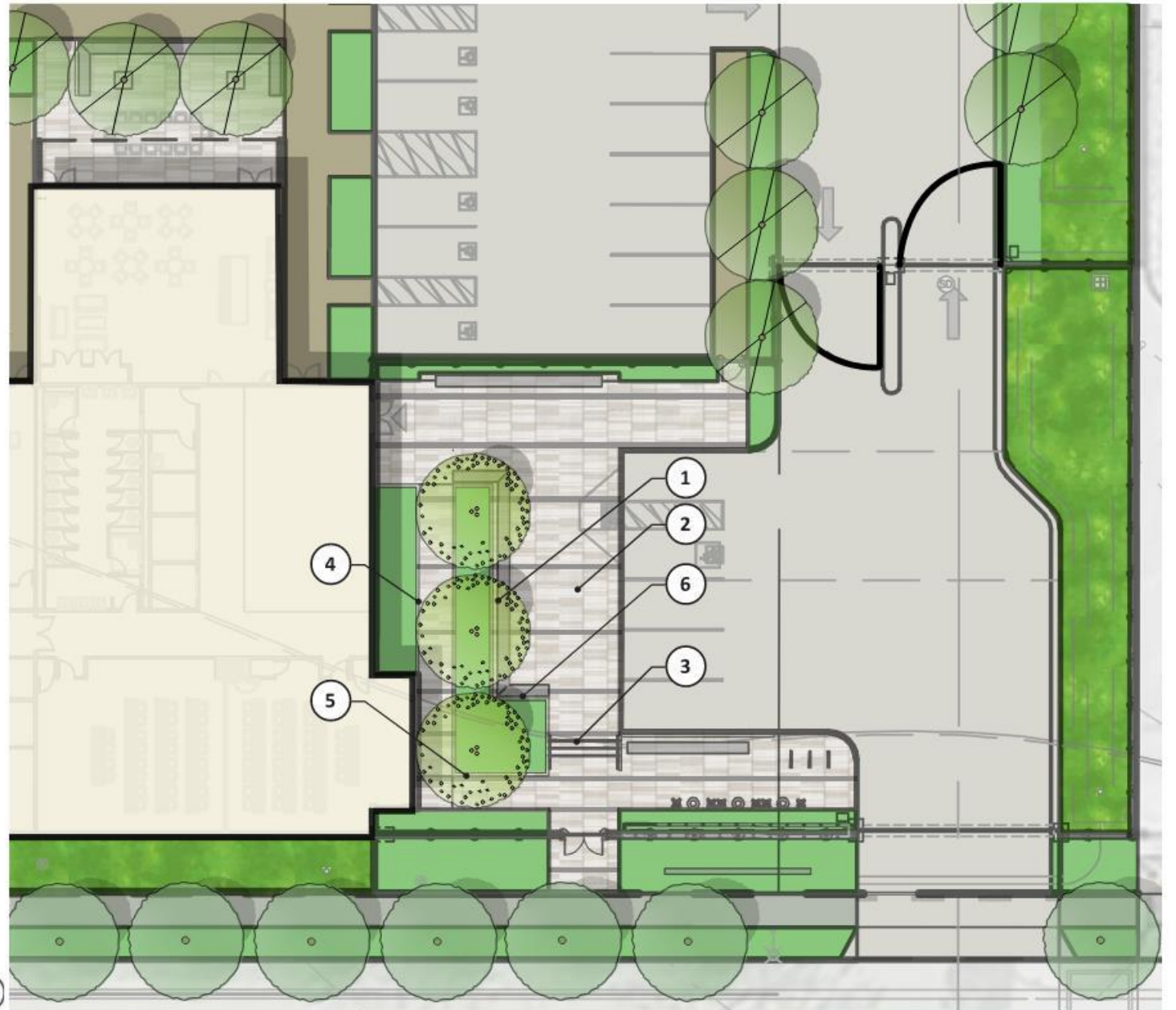
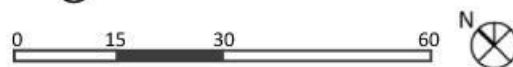
4 SPECIAL WALL FINISH



5 LETTERING



6 LIGHTING



LANDSCAPE CONCEPTUAL ENLARGEMENT PLAN



STORMWATER PLANTING



SLOPE STABILIZATION PLANTING



ORNAMENTAL PLANTING



PLANTING SCREEN



STREET TREE



COLUMNAR TREE



ENTRY COURTYARD - SPECIMEN TREE

LANDSCAPE PLANTING IMAGERY



ENTRY COURTYARD VIEW