



# Pine Grove Youth Conservation Camp

PRESENTATION



## INTRODUCTION

Operating since 1945, Pine Grove Youth Conservation Camp (PGYCC) in Amador County offers rehabilitation and re-entry services for incarcerated youth through career training, therapy, and teamwork.

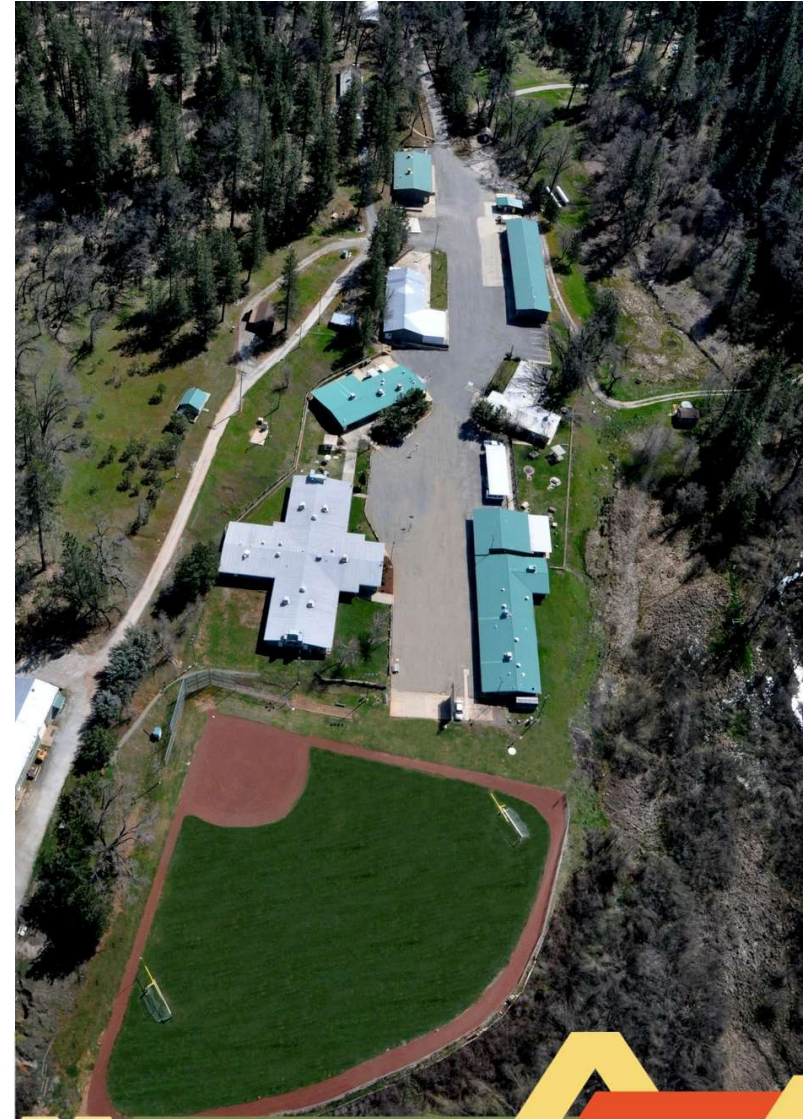
PGYCC is operated jointly with CAL FIRE and California Department of Corrections and Rehabilitation.



Oldest operating camp in CA



Only Youth Camp in CA





## Vision

Support state, local and federal government agencies as they respond to emergencies such as fires, floods, and other natural or manmade disasters.



## Mission

Pine Grove Camps mission is to protect the public by providing fire protection to the citizens of California, performing public conservation projects and providing youth with housing, care and training for their successful transition back to society.



## History

1945 - Under agreement with State Division of Forestry, Department of Natural Resources, Youth Authority began construction of forestry camps for boys

1962 - 98 Acres were purchased, including the original 40 acres that were leased.

1967-69 - Trailers for housing were brought in to replace old torn down buildings, new construction began, construction completed in May 1969.

# Topics

1

**Criteria For Placement**

2

**Referral and Acceptance Process**

- Forms
- Acceptance

3

**Firefighting Program**

4

**Services and Programs**

5

**Youth Living**

6

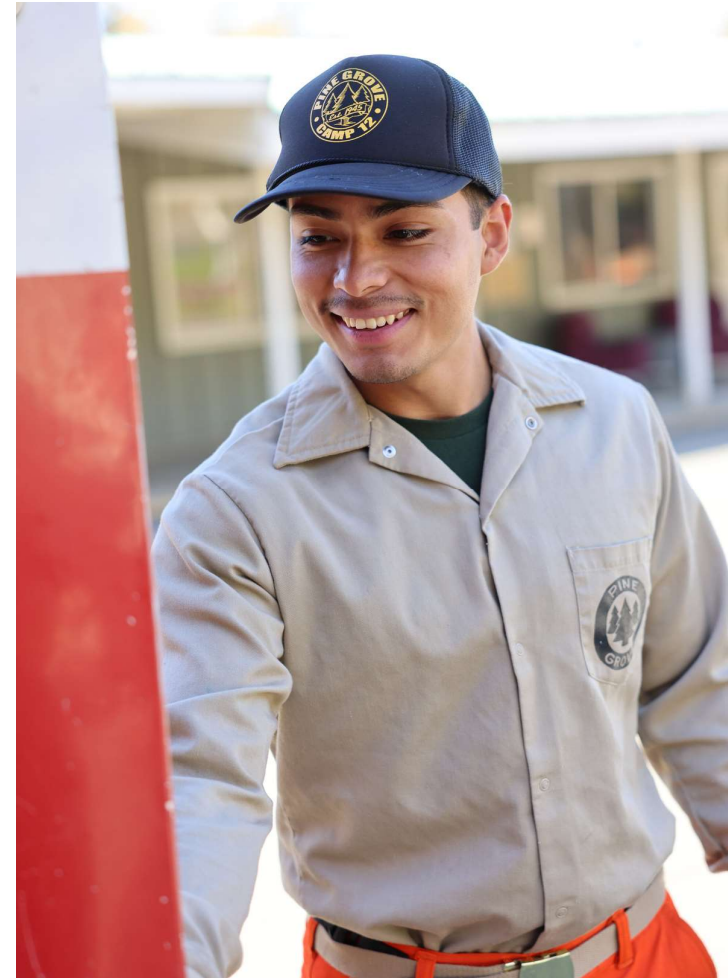
**Case Management**



1

## Criteria For Placement

- Standard Criteria:
  - Youth is under the jurisdiction of the juvenile court for a felony offense
  - Youth is male, age 18-25
  - Youth has a release date no less than (6) months and no more than (72) months
  - Youth is free of any serious rule violations for the past (60) days
  - Youth possess or *close to receiving* a high school diploma or GED
  - Youth has provided a DNA sample



2

## Criteria For Placement Cont.

# EXEMPTION REQUEST

Youth whom meet the standard criteria but also have one or more of the following BEHAVIORAL ISSUES/FACTORS in their history must complete an Exemption Request. Behavioral issues include:



**Runaway or AWOL History**



**Possession of Illegal Fireworks**



**Mental Health History**



**Release date does not meet allowable time period**



**Serious Rule Violation within last (60) days**



**Previous Camp Removal**



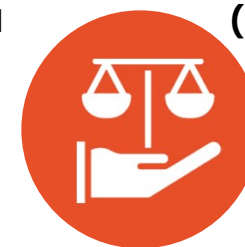
**Public Interest Case**



**Sexual Misconduct Rule Violation**



**Birthplace Outside of the U.S.**



**Serious or Violent Offense**

1

## Criteria For Placement Cont.

- One or more of the following are **PERMANENTLY EXCLUDED**:
  - Escape by force or violence from any county, private or state facility
  - Sustained petition or conviction for arson
  - History of possession or manufacture of an explosive device
  - History of an offense that is sex-related
  - Medically unfit for in-camp duties
  - Active hold or pending court action that may result in additional confinement time



## 2

### Referral and Acceptance Process

- Your county must have an executed with CDCR approved by Dept. of General Services
  - Vetted through either county's purchasing operations/procedure and may require resolution by their Board of Supervisors
- PRIOR TO SUBMITTING A PACKET:
  - Contact CDCR for first referral (assist streamline process)
  - Have medical/mental health screenings completed with clear articulation the subject is "Clear to be a Firefighter." (this is the #1 reason for rejection and should be caught prior to submission to CDCR.



What are you  
Waiting for???  
Join PGYCC Today!





## 2

### Referral and Acceptance Process Cont.

- **Acceptance:**
  - The county responsible for transporting youth to PGYCC
- **Denied:**
  - County may appeal within 30 days, in writing, if additional information is available
  - A new application may be submitted 60 days after denial





3

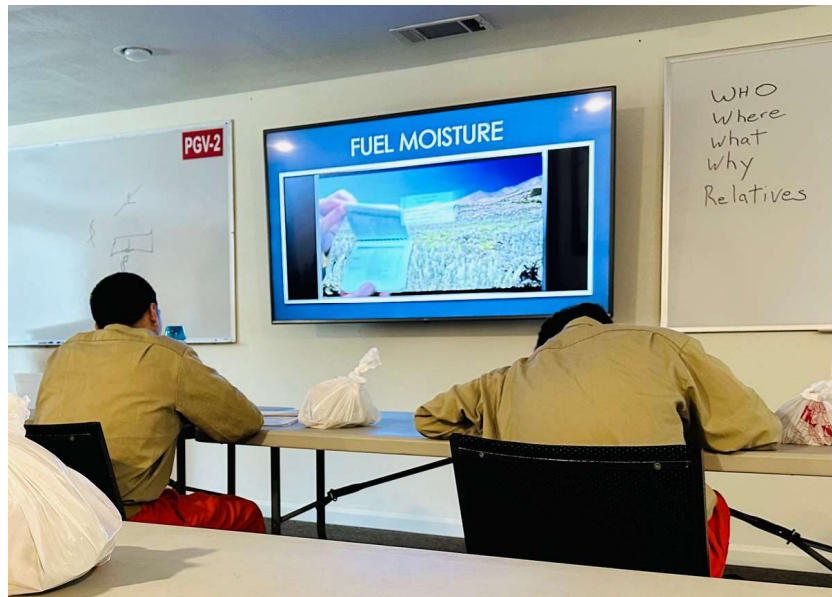
## Firefighting Program

Youth are expected to have the endurance to perform difficult physical tasks. Physically requiring above average ability, endurance, and superior condition, including occasional environmental conditions, over extended periods of time. This can include running, walking, hiking, difficult climbing, jumping, twisting, bending, and lifting over 25 pounds. Pace of work is typically set by the emergency situation.

3

## Firefighting Program Cont.

- 96-hour course training certification
- CAL FIRE Wildland Firefighting Certification
- 6 Professional entry-level wildland certification



- 16-hour Wildland Chainsaw Certification
- Tree Faller Class A Sawyer Certification
- Professional Agency Work Experience

3

## Firefighting Program Cont.



- Youth assigned to a fire fighting crew consisting of 12 to 17 young men, working from 8 am to 4 pm daily (weekends and holidays off).
- Youth receive a daily wage for their work and position on the fire crew.
- Under direction of CAL FIRE, youth engage in various types of conservation work:
  - Fuel break construction
  - road and highway clearance
  - creek clearing
  - grounds and facility maintenance
  - many other labor-intensive jobs



3

## Firefighting Program Cont.

The major emphasis of the camp program is on employability skills with a strong emphasis on developing good work habits. Youth also receive leadership training within their crew structure.



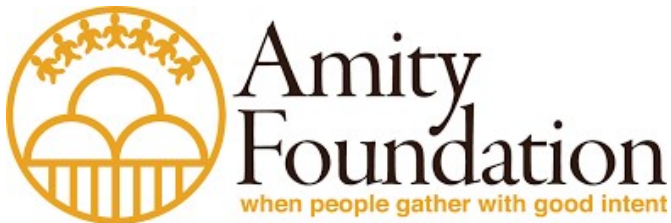
4

## Services and Programs



Youth reside in a therapeutic community environment, which includes evidenced-based curriculum delivered by Amity Foundation staff. Other therapeutic services also provided by ARC:

- Restorative Justice
- Criminal Addictive Thinking/Victims Impact
- Positive Reinforcement/Motivational Incentives
- Relapse Prevention
- Violence Interruption
- Substance Abuse Counseling
- Re-Entry and Transitional Planning
- 1 on 1 Counseling/Treatment Planning
- Continued support and aftercare



4

## Services and Programs Cont.



In addition to treatment, youth may also enroll in college courses, volunteer programs, restorative justice programs, sport activities, and various other events.



5

## Youth Living



- Canteen
- Packages (Amazon, Quarterly, etc.)
- Phones
- Visits (In-Person & Video)
- Dayroom/T.V. - Movies
- Video Games
- Outside Recreation
- Gym
- Music



6

## Case Management

The Division of Adult Parole Operations (DAPO) staff will act as the primary case management leaders and assist the PGYCC participants in meeting their program training requirements, education, and criminogenic needs. DAPO assists in the following reentry planning:

- Coordinate with ARC and youth to develop reentry and transitional plan including job or career placement, housing, education, & other social supports & treatment services.
- Monitor & document youths progress in treatment & programming
- Review program updates from Amity, CAL FIRE, & DAI & forward to probation via progress report
- Collaborate with stakeholders to maintain the mission of the program & find resolution to any issues that may arise.



6

## Case Management Cont.

- Maintain an open line of communication with resource and service providers.
- Reviews treatment and training case plans and ensure appropriate services and resources are utilized to meet individual case factor goals and needs.
- Assists program participants with transitioning back into the community by coordinating and bridging efforts of State and Local stakeholders
- Facilitate video conference with probation and the participant
- Facilitate attorney phone calls
- Assist youth with the application process for the Firefighter Training and Reentry Program at the Ventura Training Center and other agencies.



# Contacts

**Contracts:** BMI T. Elliott – [trevor.elliott@cdcr.ca.gov](mailto:trevor.elliott@cdcr.ca.gov)  
279-223-3604

**Screening/Referral:** CCII D. Kirk – [daniel.kirk2@cdcr.ca.gov](mailto:daniel.kirk2@cdcr.ca.gov)  
209-984-5291 X5183

**PG Custody:** CC/Lt. V. Melendez – [vanessa.melendez@cdcr.ca.gov](mailto:vanessa.melendez@cdcr.ca.gov)  
209-296-7581

**PG CAL FIRE:** Chief J. Gaines – [jed.gaines@fire.ca.gov](mailto:jed.gaines@fire.ca.gov)  
530-708-2703

**PG DAPO:** Agent D. Dillon – [daniel.dillon@cdcr.ca.gov](mailto:daniel.dillon@cdcr.ca.gov)  
916-963-6295

**Amity:** Engagement Dir. A. Reyes – [angela.reyes1@cdcr.ca.gov](mailto:angela.reyes1@cdcr.ca.gov)  
209-296-7581

**ARC:** Associate Dir J. Osorio – [josorio@antirecidivism.org](mailto:josorio@antirecidivism.org)  
702-9698221



**Q & A:**



**PGYCC Recruitment Video**

# Thank You

FOR YOUR ATTENTION

