



Relocation of *Whales*, 1939 by Robert B. Howard to City College Ocean Campus, Central Courtyard of the New Student Success Center

Title: *Whales* or *Two Whales*

Date: 1939

Artist: Robert Boardman Howard

Medium: Cast stone with black granite aggregate

Dims: Approximately 10 ft. x 16 ft. x 8 ft.

Credit: Collection of the City and County of San Francisco, Commissioned for the Golden Gate International Exposition of 1939.

Acc #: 1940.10

Artist Robert B. Howard sculpting the model that will be used to cast the final artwork.

GGIE, 1939

Court of the Whales, San Francisco Building, Golden Gate International



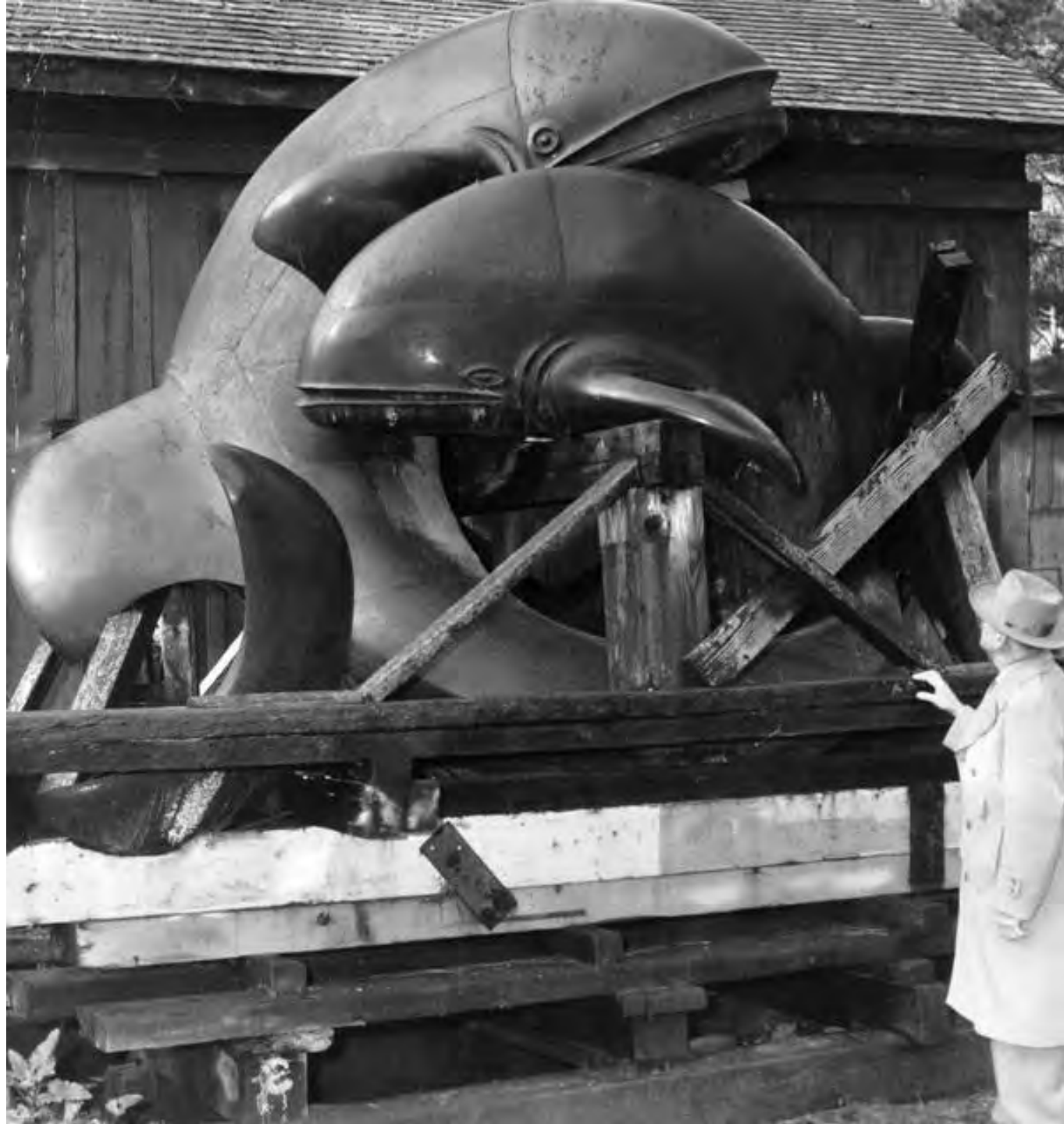
GENERAL INTERIOR VIEW — COURT OF THE WHALES
MURAL ABOVE BALCONY BY JANE BERLANDINA

OpenSFHistory.org

Photo courtesy of Anne Schnoebelen of the Treasure Island Museum.



Being Stored in Golden Gate Park 1947



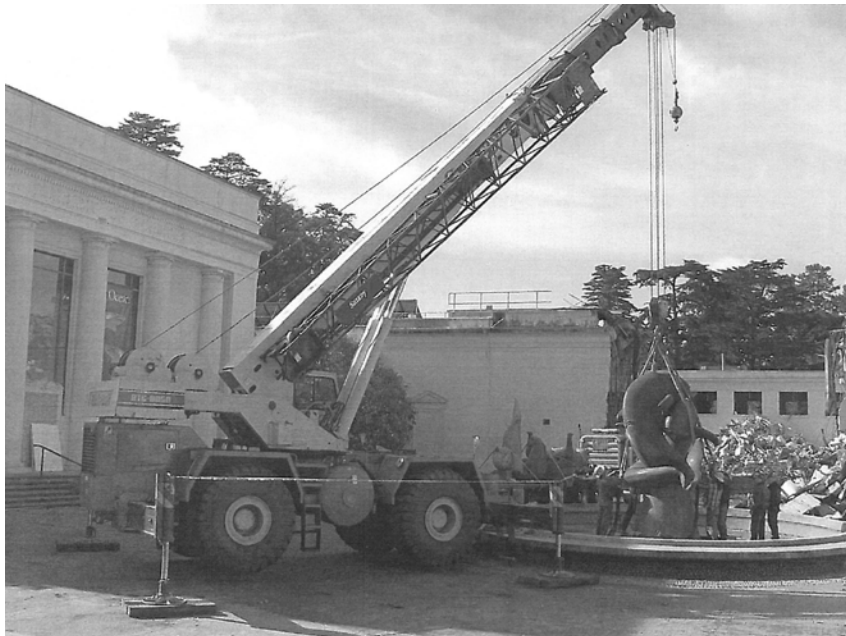


Golden Gate Park, Jul 18, 1960

Whale sculpture and fountain, "The Whales," by Robert Boardman









Diego Rivera painting the Pan American Unity mural at the Golden Gate International Exposition on Treasure Island in 1940.



Dudley Carter (left) in the Golden Gate Art-in-Action 'pit' in the process of carving 'Bighorn Mountain Ram'. Diego Rivera was at work on the scaffolding on the upper right, out of view. Also depicted is Fred Olmsted working on the Leonardo da Vinci limestone head, now located in Cloud Plaza, City College of San Francisco. The Diego Rivera Archives of CCSF.



Dudley Carter in the Golden Gate International Exposition Art-in-Action 'pit', carving 'Bighorn Mountain Ram'. 1940. RiveraMural.org

Dudley Carter with the newly restored 'Bighorn Mountain Ram' in the lobby of Conlan Hall. SF Examiner, 5 May 1983.



The year of the ram
The artist: 90-year-old Dudley Carter. The sculpture: a 44-year-old, 1,200-pound red-wood ram he carved for the World's Fair in 1939 at Treasure Island. He has stripped and restored it at San Francisco City College and it stands in Conlan Hall.
Examiner-Gordon Stone



Goddess of the Forest, also by Dudley Carter at GGIE. CCSF Theater



Architect Timothy Pflueger designed this first permanent building for city college in 1940. Artworks created at Art in Action at the Golden Gate International Exposition of the same year were incorporated into the building design.



These mosaics by artist Herman Volz evoke the domains of physics chemistry, biology, and mathematics in large stylized shapes of marble. They were started at Art in Action during the GGIE in 1940 and were completed on-site after two years.



Frederick Olmsted carved Leonardo for the public at Art in Action at the GGIE in 1940. Edison completed later on site at CCSF.





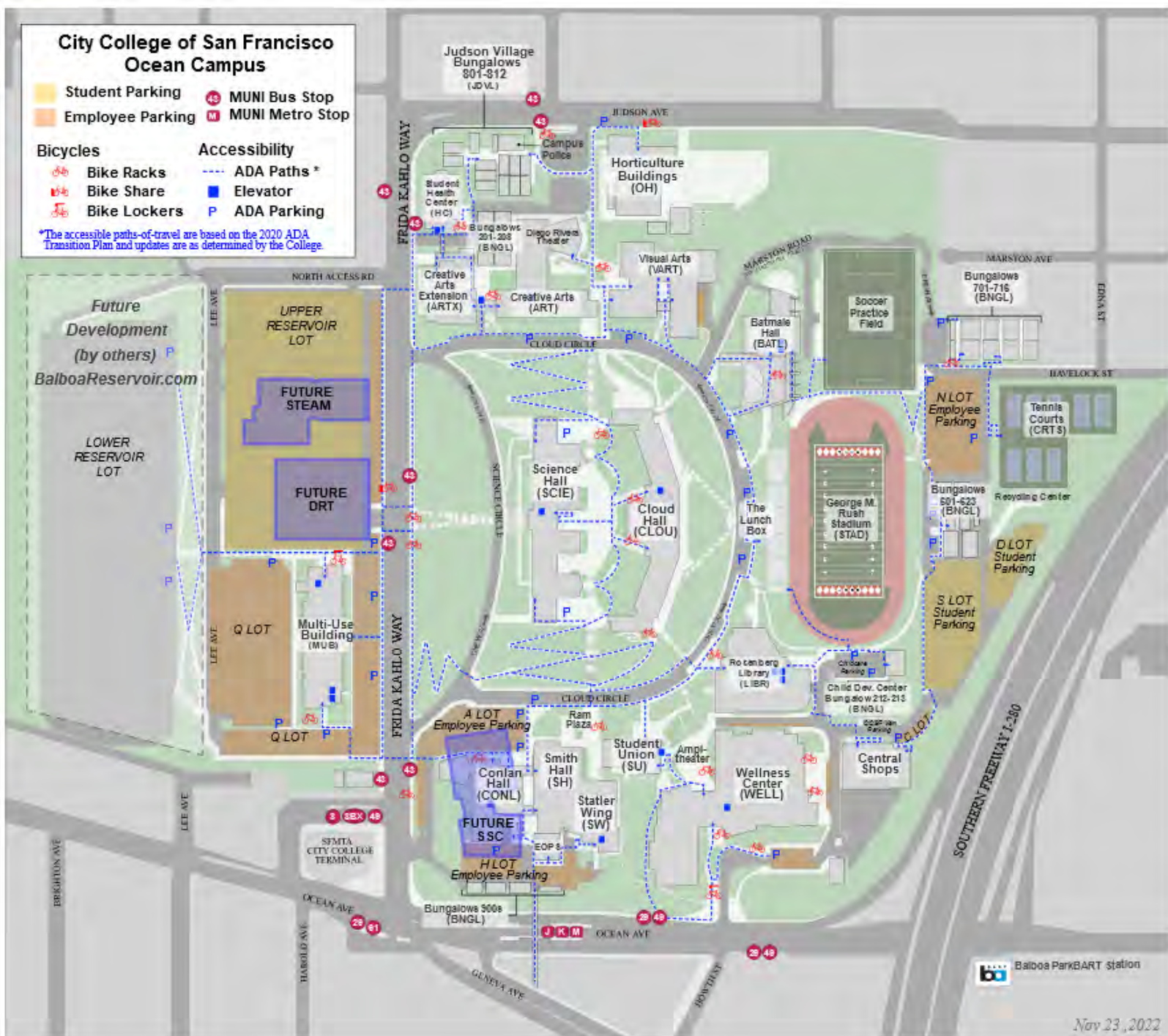
An eight-foot replica of sculptor Ralph Stackpole's Pacifica, originally 80 ft from the GGIE. Sculpture commissioned for the CCSF Campus.

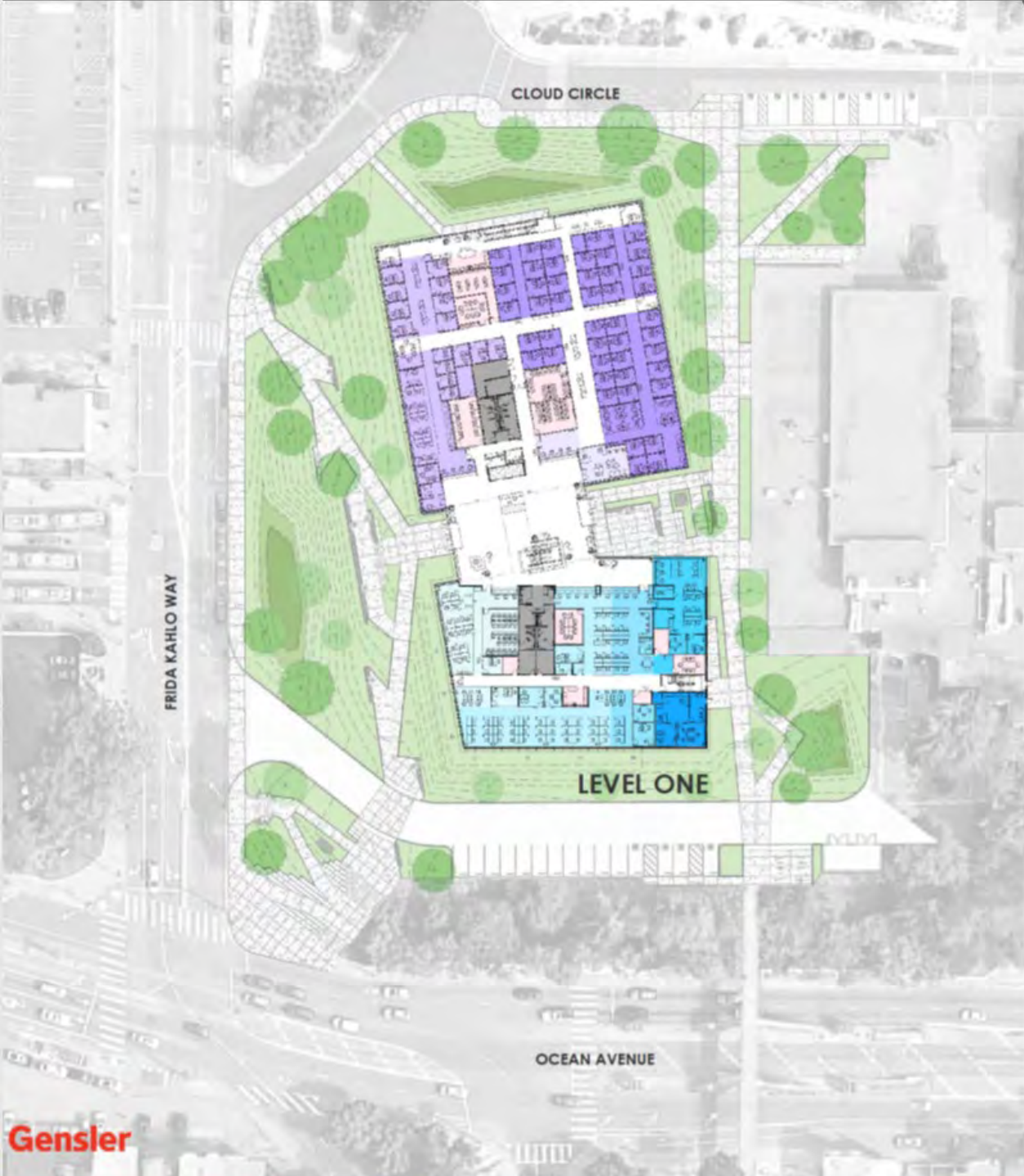


City College of San Francisco Ocean Campus

- Student Parking
- Employee Parking
- Ⓜ MUNI Bus Stop
- Ⓜ MUNI Metro Stop
- Bicycles**
- 🚲 Bike Racks
- 🚲 Bike Share
- 🚲 Bike Lockers
- Accessibility**
- - - ADA Paths *
- Elevator
- P ADA Parking

*The accessible paths-of-travel are based on the 2020 ADA Transition Plan and updates are as determined by the College.







Rendering of proposed relocation site for 'Bighorn Mountain Ram' by Dudley Carter, interior of Student Success Center. City College of San Francisco.



Rendering of new Gateway building at Ocean/Frida Kahlo Way. Showing proposed new location of 'Sentinels' by Aristides Demetrios. City College of San Francisco.



