



CURRENT RESEARCH & EPIDEMIOLOGY AT THE CENTER ON SUBSTANCE USE AND HEALTH

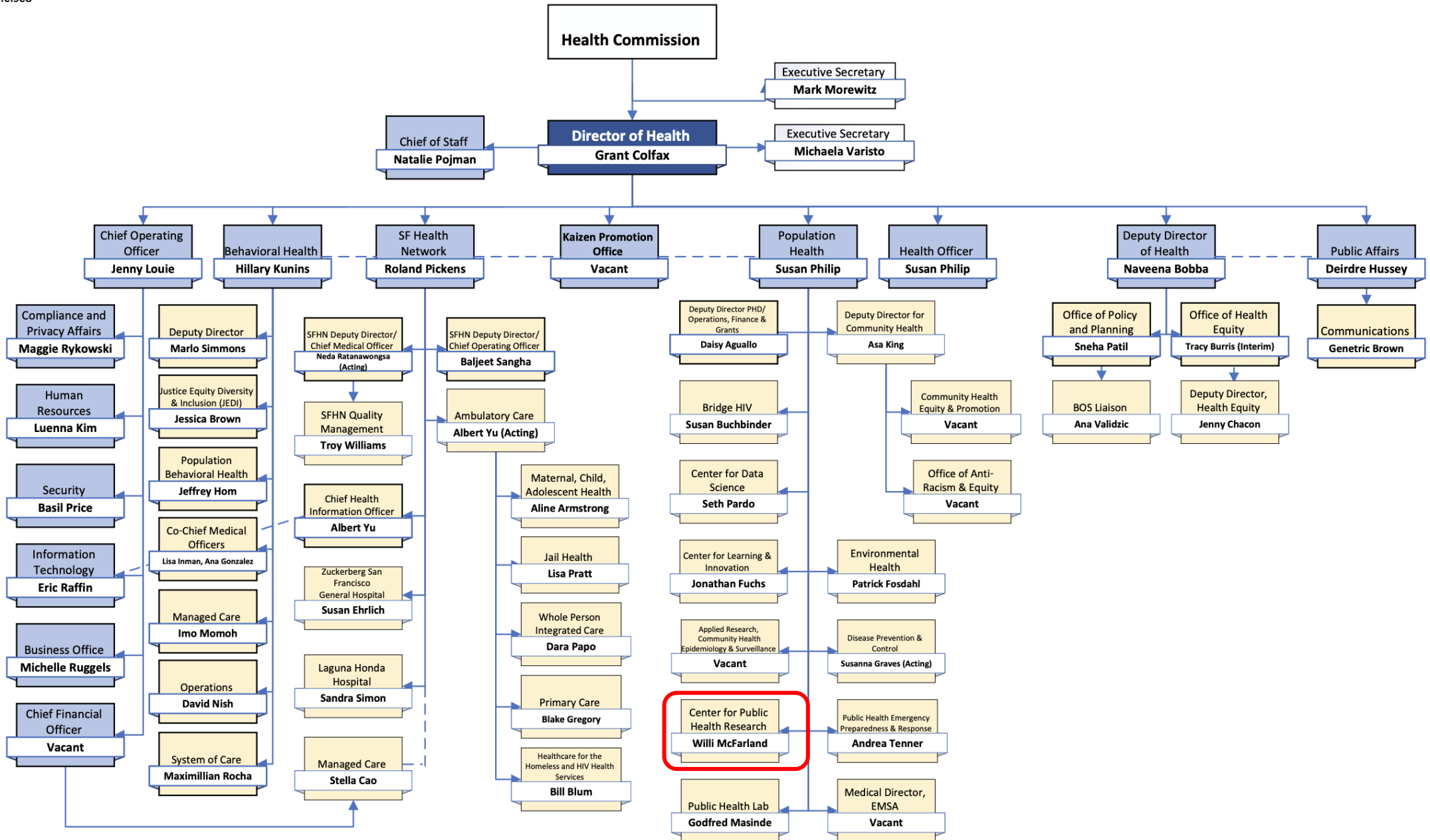
Phillip Coffin MD
August 6, 2024



POPULATION HEALTH DIVISION
SAN FRANCISCO DEPARTMENT OF PUBLIC HEALTH



City and County of San Francisco
 London N. Breed
 Mayor



Population Health Division (PHD) Organizational Chart – Executive and Branches

Revised 5/9/2024



Grant Colfax
Director of Health

Susan Philip
Health Officer
PHD Director &
SF Health Officer

Shonika Kumar
Management Assistant
(1840)

(2233 Vacant)
Deputy Health Officer
Research, Learning, and
Development

Bridge HIV
Susan Buchbinder (2233)

Center for Public Health
Research (CPHR)
Willi McFarland (2232)

Center for Learning and
Innovation (CLI)
Jonathan Fuchs (2232)

Information & Guidance
(I&G)
Vacant (0922)

Daisy Aguallo
Deputy Director of Operations,
People & Infrastructure (0941)

Administration, Policy &
Performance
Eduardo Sida (0923)

Community Operations
Vacant (0931)

Operations Branch
Lucia Angel (0931)

Vital Records
Erika Campos (1823)

DPH/PHD Finance
Maggie Han
(1824)

Compliance
Joseph Gorndt
(1824)

(0943 Vacant)
Chief Surveillance, Data and
Analytics Officer

Applied Research
Community Health Epi &
Surveillance (ARCHES)
Melissa Sanchez
(TB/CD/Viral Hep)
Trang Nguyen (STD)
Sharon Pipkin

Center for Data
Science (CDS)
Seth Pardo (0922)

(2233 Vacant)
Deputy Health Officer
Public Health Services

Disease Prevention &
Control (DPC)
Susannah Graves (acting)
(2233)

Public Health Lab Services
(PHL)
Godfred Masinde (0932)

Environmental Health (EH)
Patrick Fosdahl (0953)

Public Health Emergency
Preparedness and
Response Branch (PHEPR)
Andi Tenner (2233)

Emergency Medical
Services Agency (EMSA)
Medical Director
Vacant (2233)

Asa King
Deputy Director
Community Health (0953)

Office of Anti-Racism &
Equity (OARE)
Vacant (0922)

Community Health and Equity
Promotion (CHEP) (0931)
Nyisha Underwood

Equity and Community
Engagement (ECE)
Isela Ford (0922)

Color Key

- PHD Executive Deputies
- PHD Branches
- Vacant Positions
- PHD Branches with Acting Directors (s)
- DPH Liaison supporting PHD

Creating better health outcomes for all people who use substances

We study and support pharmacologic, behavioral, and system interventions addressing substance use and related health outcomes.



~ 30 staff:

- Investigators
- Research Clinicians
- Research Analysts/Epidemiologist
- Clinical Psychologist
- Study Managers
- Community/Recruitment Manager
- Research Associates
- Recruitment Staff
- Interns and Fellows

ACTIVE CSUH PROJECTS

Use meth?



Help contribute to finding the first potential FDA-approved medication to treat meth use.

Earn up to **\$2,430**



PRIME



CURB-2



CATS have 9, YOU have 1



HiNT



SNAP

INTERESTED IN REDUCING YOUR ALCOHOL USE

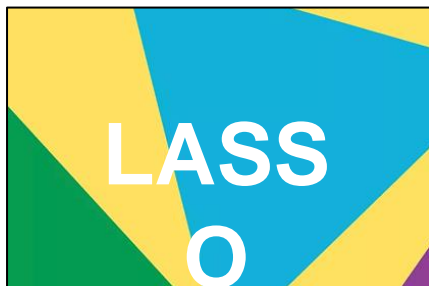


MORE WITH LESS

HARNESS



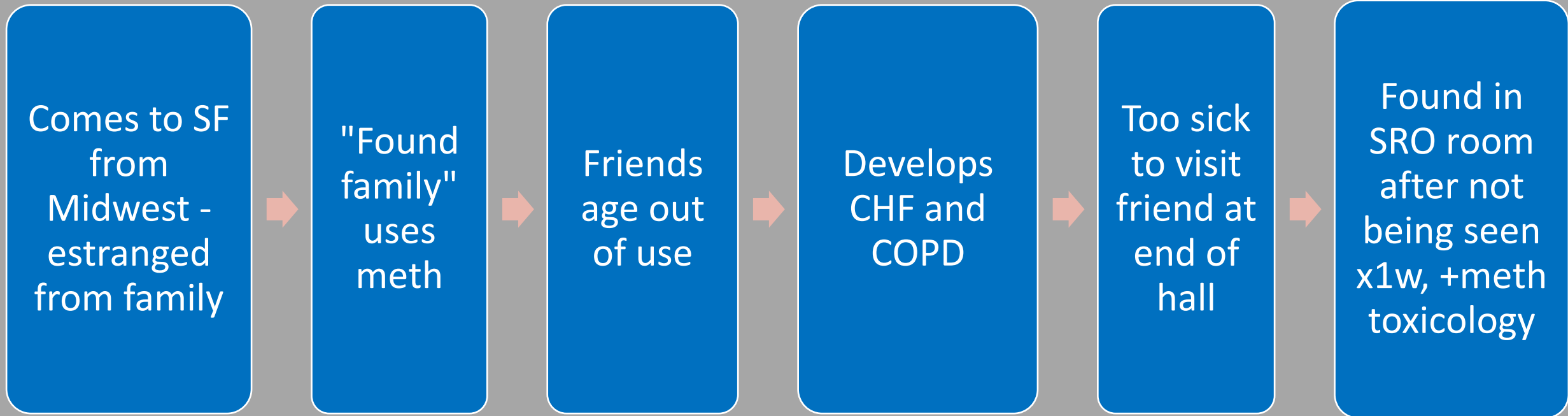
CAIO



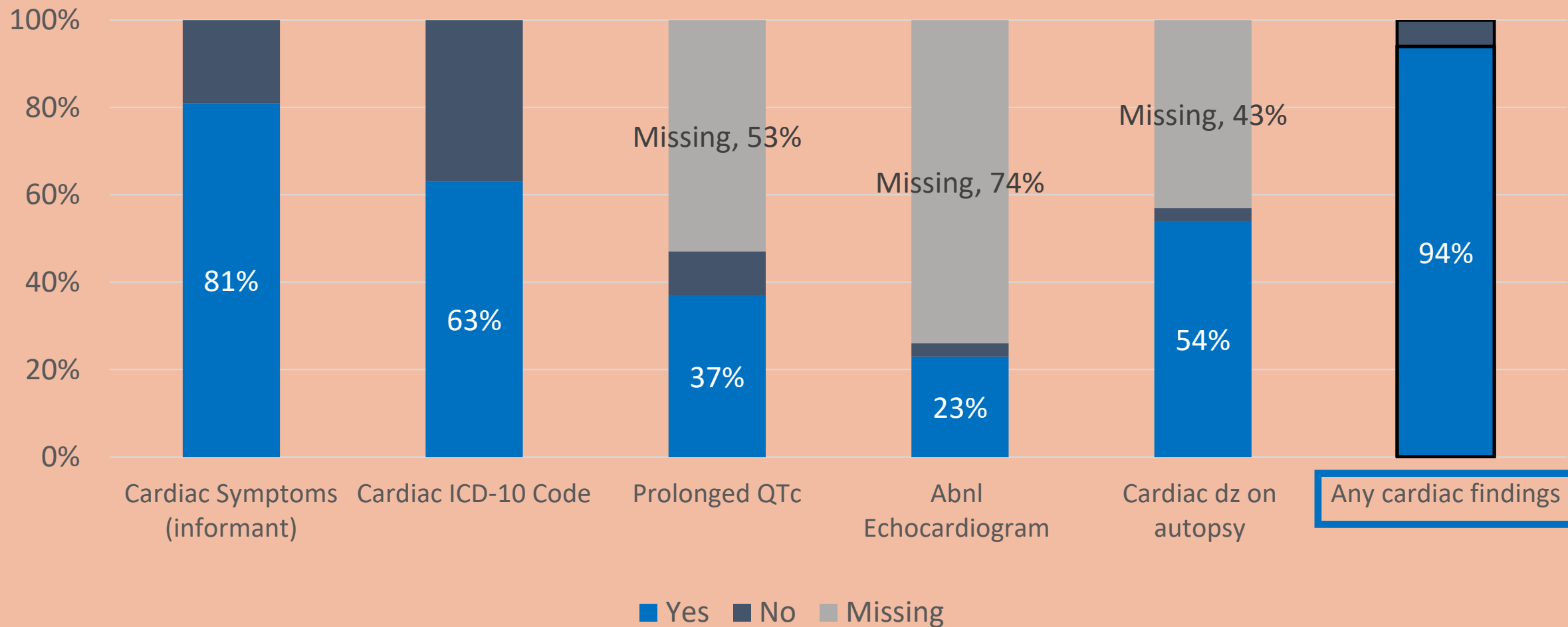
LASSO

Example Stimulant Death from LASSO Study

Death due to “acute methamphetamine toxicity”, age 56y

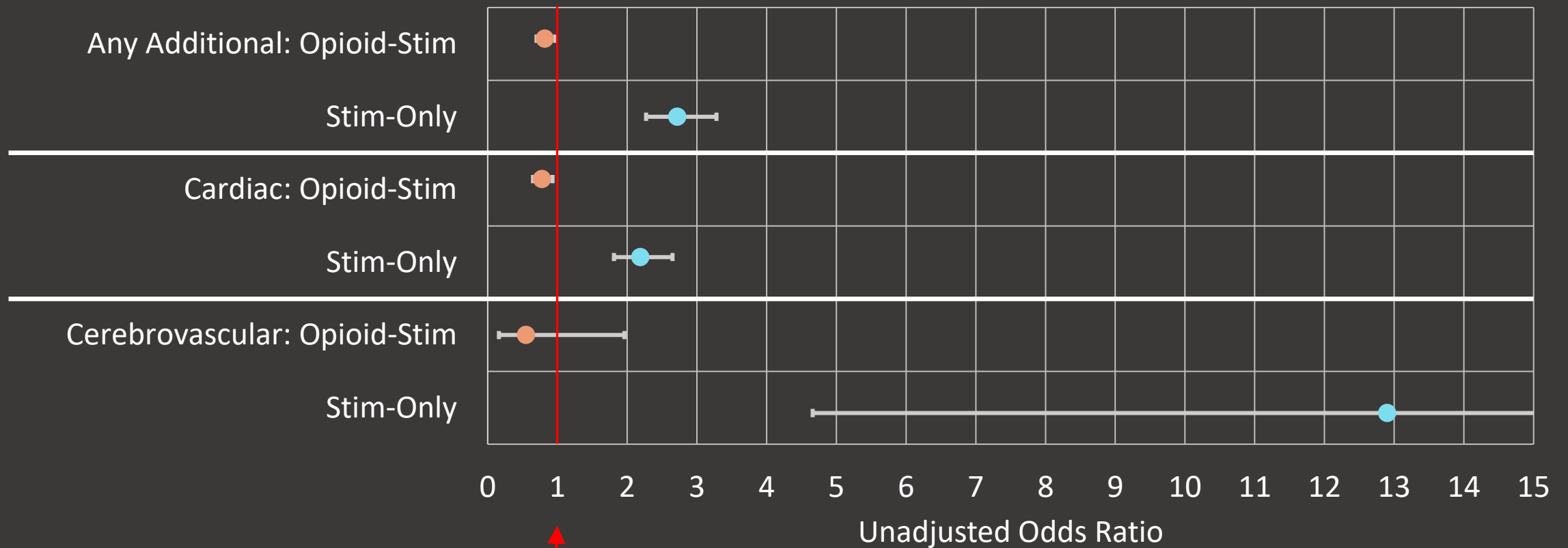


Cardiovascular Problems in “Acute” Stimulant-Only Deaths – LASSO Study



Additional Causes of Death or Significant Conditions among Acute Opioid, Opioid-Stimulant, and Stimulant Toxicity deaths, SF 2013-2023:

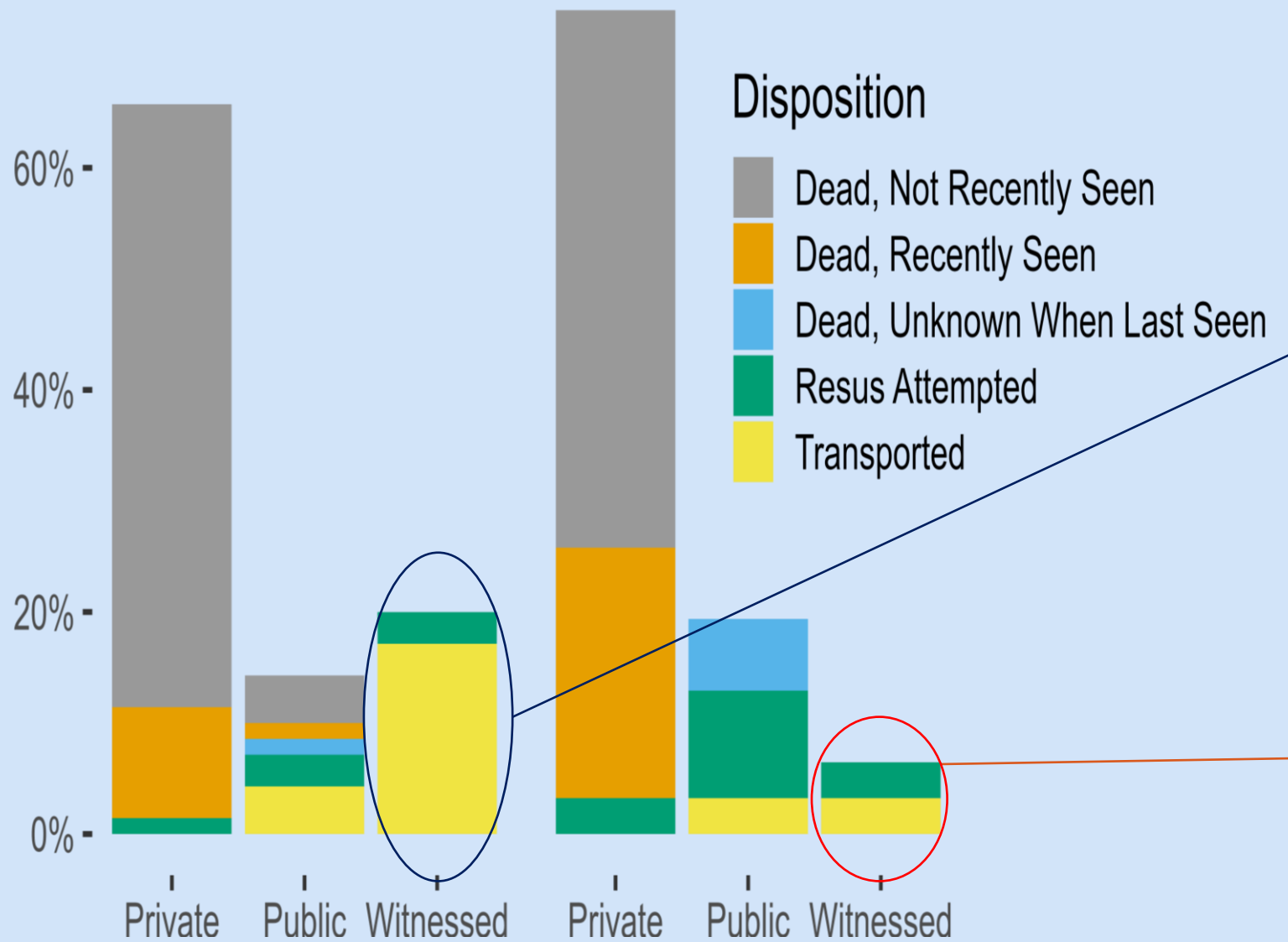
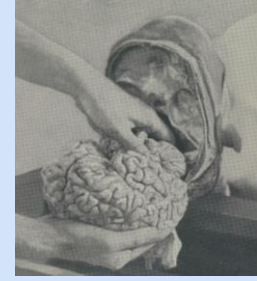
Opioid-stimulant Similar to Opioid-only Deaths



Opioid-only

Stimulant-Only Deaths

Stim-Fentanyl Deaths



Disposition

- Dead, Not Recently Seen
- Dead, Recently Seen
- Dead, Unknown When Last Seen
- Resus Attempted
- Transported

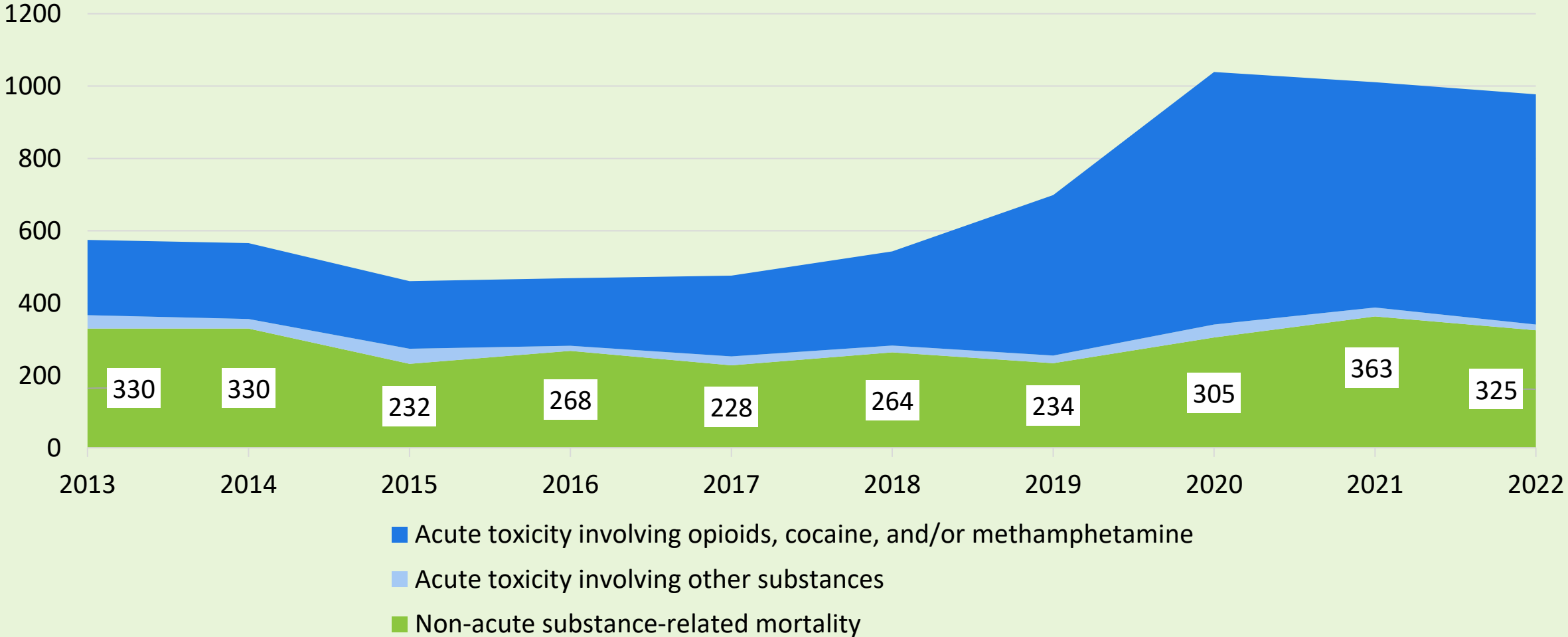
1 case immediately preceded by drug use (crack); remainder without recent use
 72% clearly CV events
 14% cerebrovascular hemorrhage
 14% unclear mechanism

Unwitnessed: 71% had evidence of drug use on scene

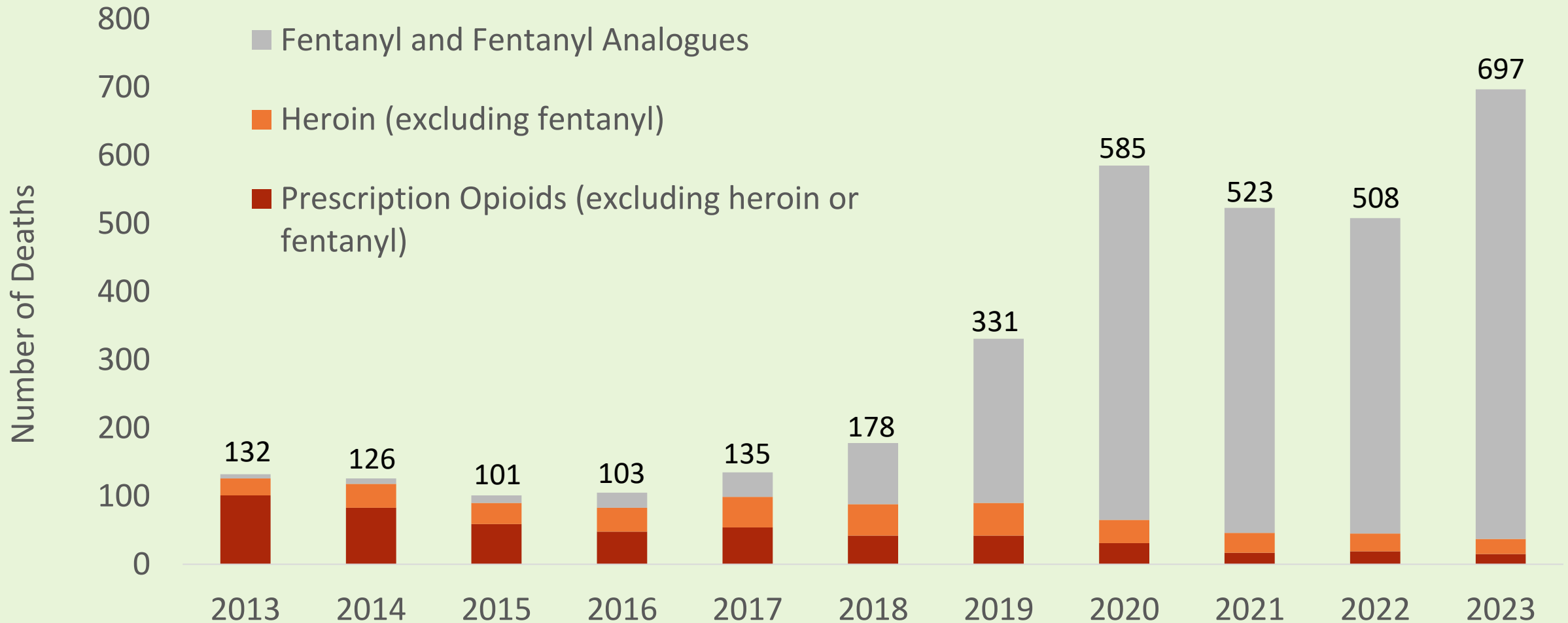
Immediately preceded by opioid use
 Caused by respiratory arrest, with delayed resuscitation

Unwitnessed: 94% had evidence of drug use on scene

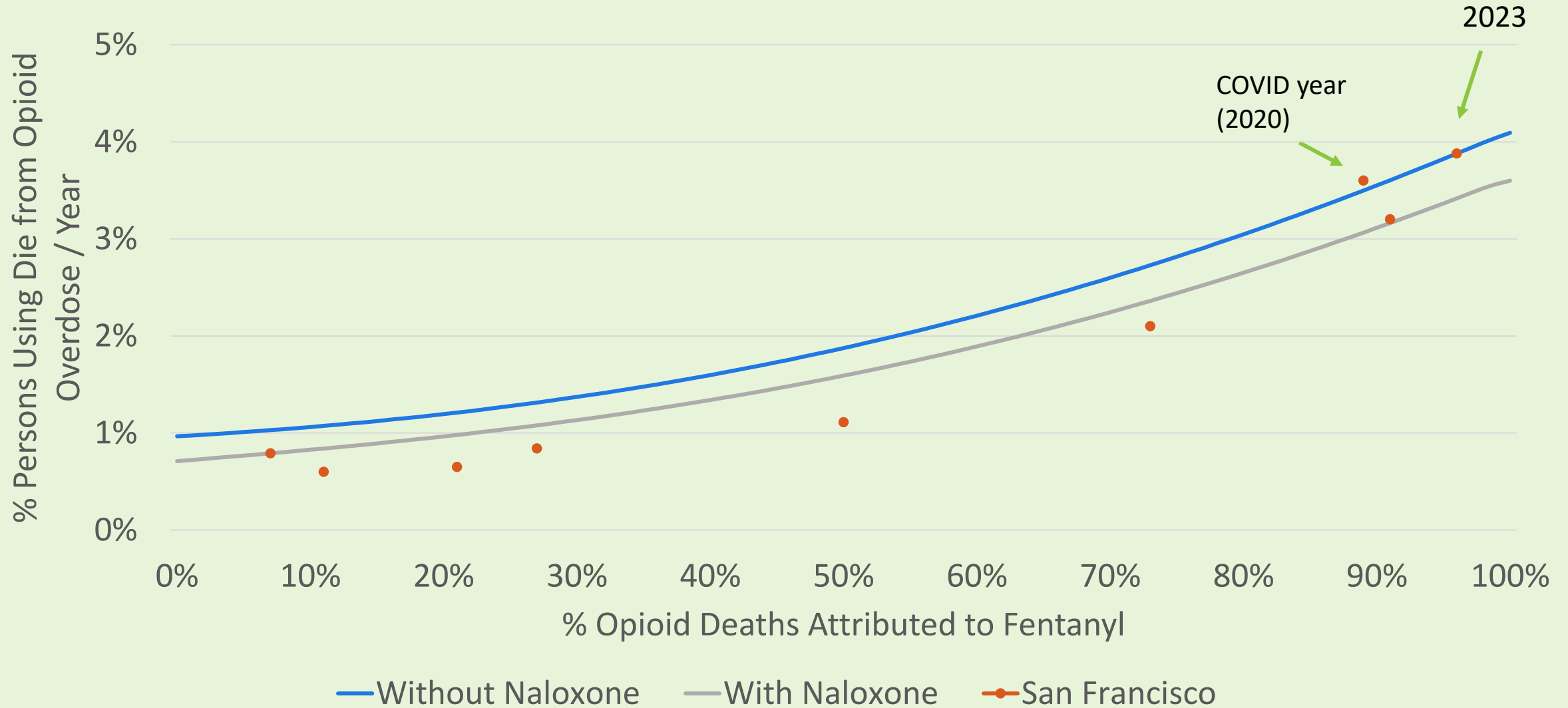
Number of Substance-Related Deaths in SF by Acute v Non-Acute



Opioid Overdose Deaths in SF



Opioid overdose mortality, with empiric data from San Francisco



Coffin, DAD, 2022

Conclusions

- CSUH continues efforts to identify effective SUD pharmacotherapies and address comorbid health conditions including HIV
- Fentanyl drives overdose mortality and saturation accounts for most changes in mortality
- Stimulant deaths are NOT like opioid overdose deaths, but more similar to alcohol deaths, largely due to chronic (cardiovascular) disease and affected by social isolation





THANK YOU!

Phillip Coffin MD

phillip.coffin@sfdph.org



Design by Mehroz Baig v. 2017-4-14



POPULATION HEALTH DIVISION
SAN FRANCISCO DEPARTMENT OF PUBLIC HEALTH