

JULY 2024

Civic Design Review

# Terminal 3 West Modernization

**COURTYARD 4 CONNECTOR [C4C]**

PHASE 1 | SCHEMATIC DESIGN



SAN FRANCISCO INTERNATIONAL AIRPORT



# Contents

**Part I** Context & Concept Review

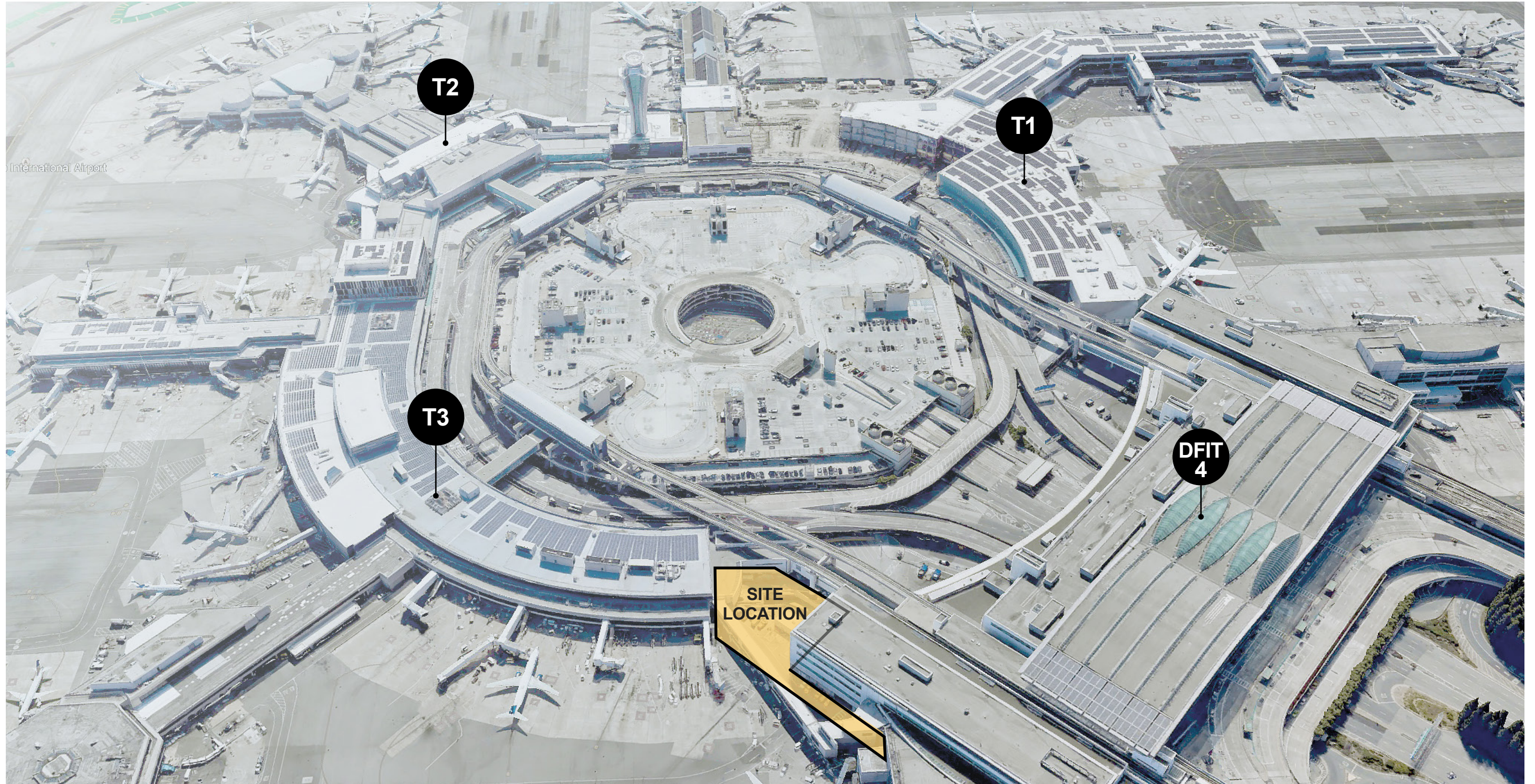
**Part II** Exterior Development

**Part III** Facade Design Strategy

Part I

---

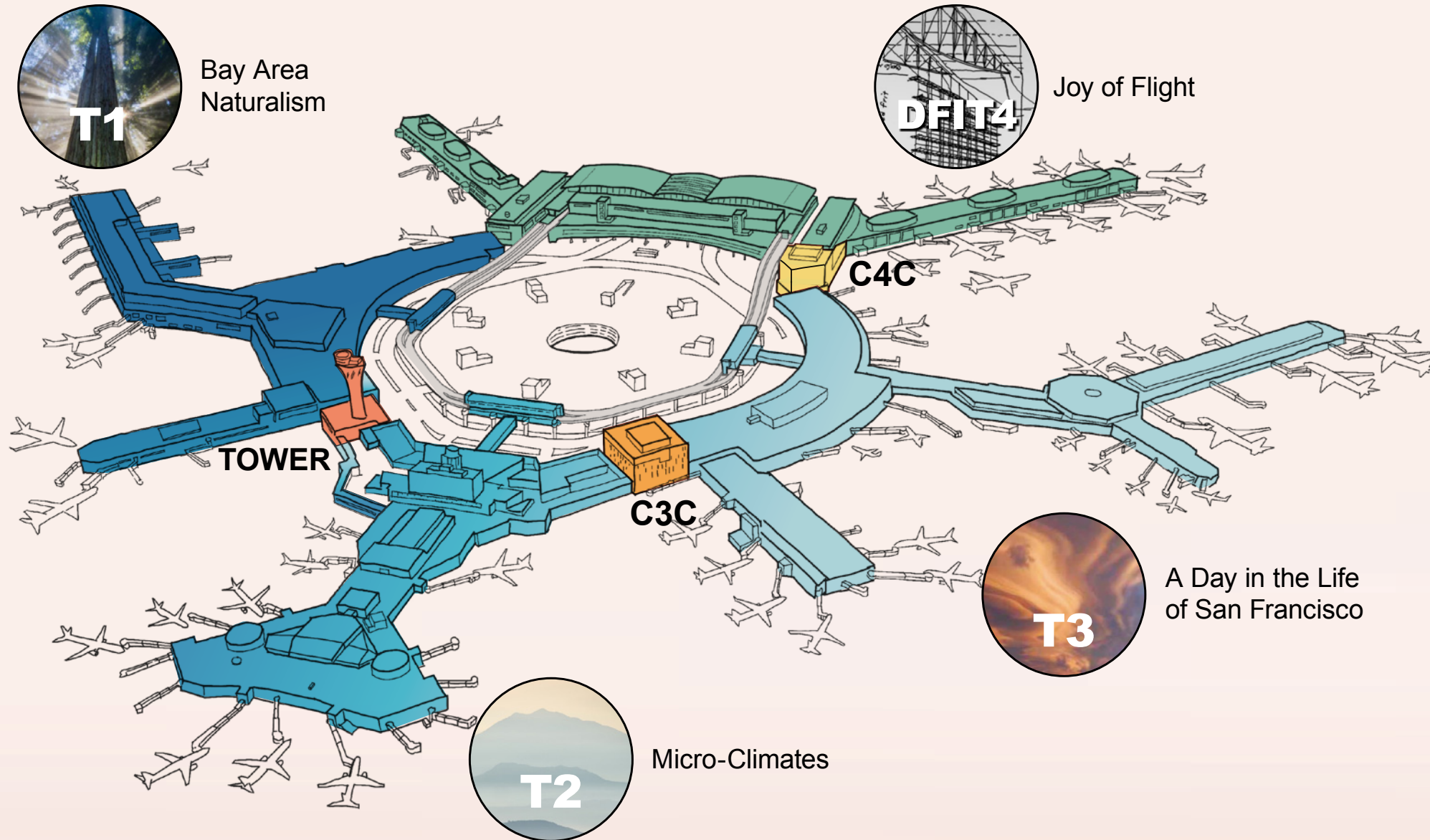
# Context & Concept Review



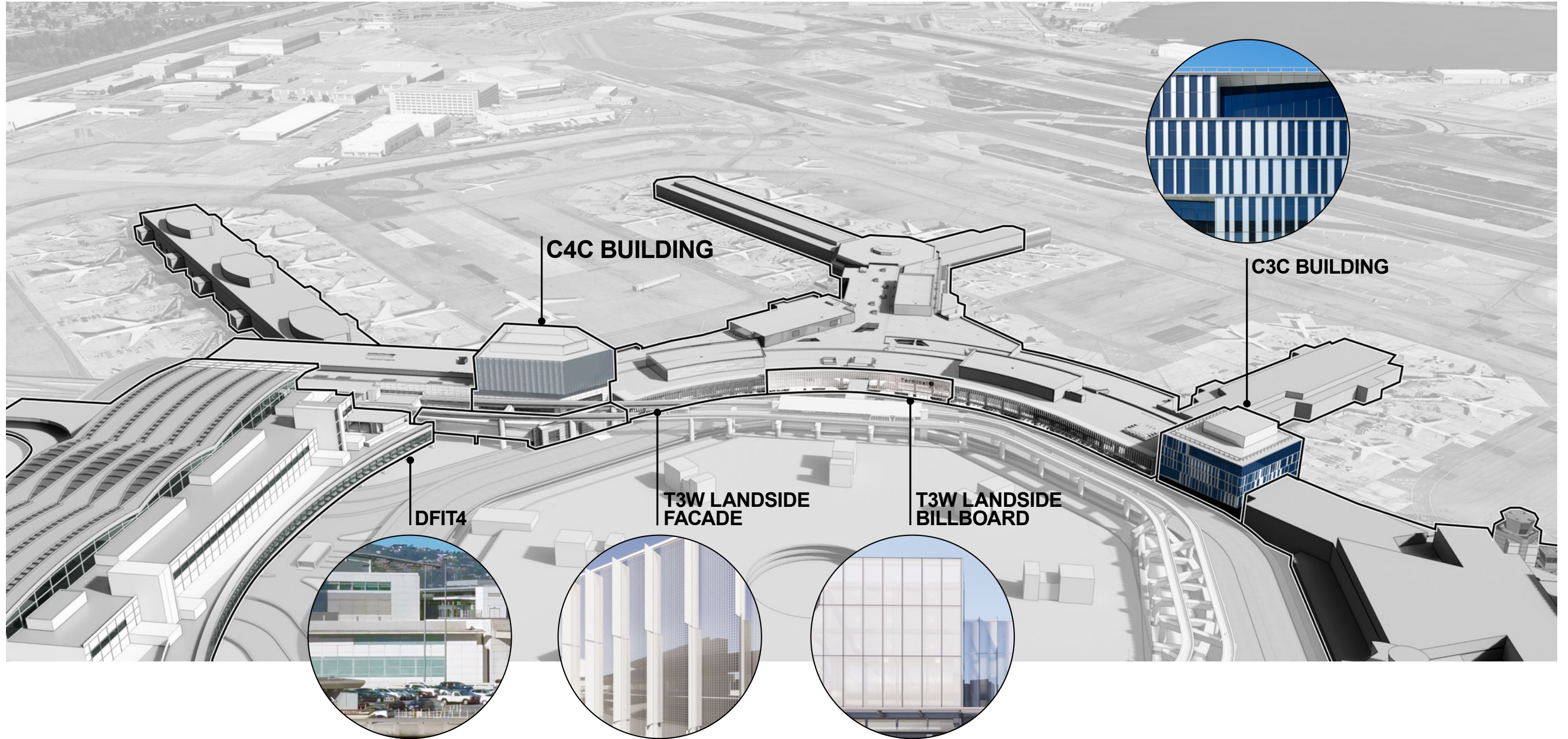
# What we heard...

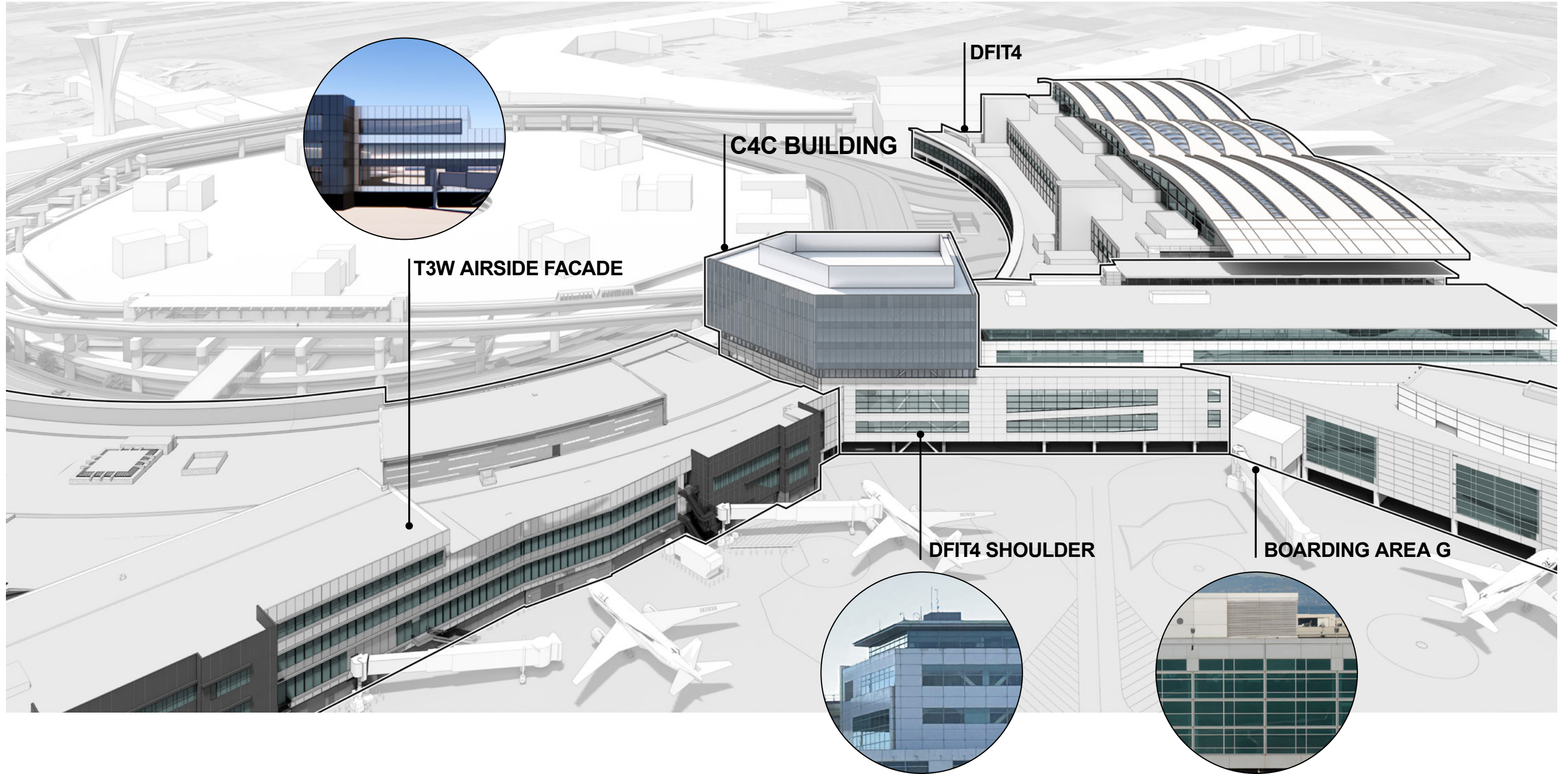
- Align with SFO's overall campus masterplan vision and avoid introducing an unrelated aesthetic form or style.
- The building tower architecture can be distinct, but should be balanced and considered with the overall surrounding context, particularly DFIT4 and T3, given their proximity.

# T3 ties the chapters together to complete the story.

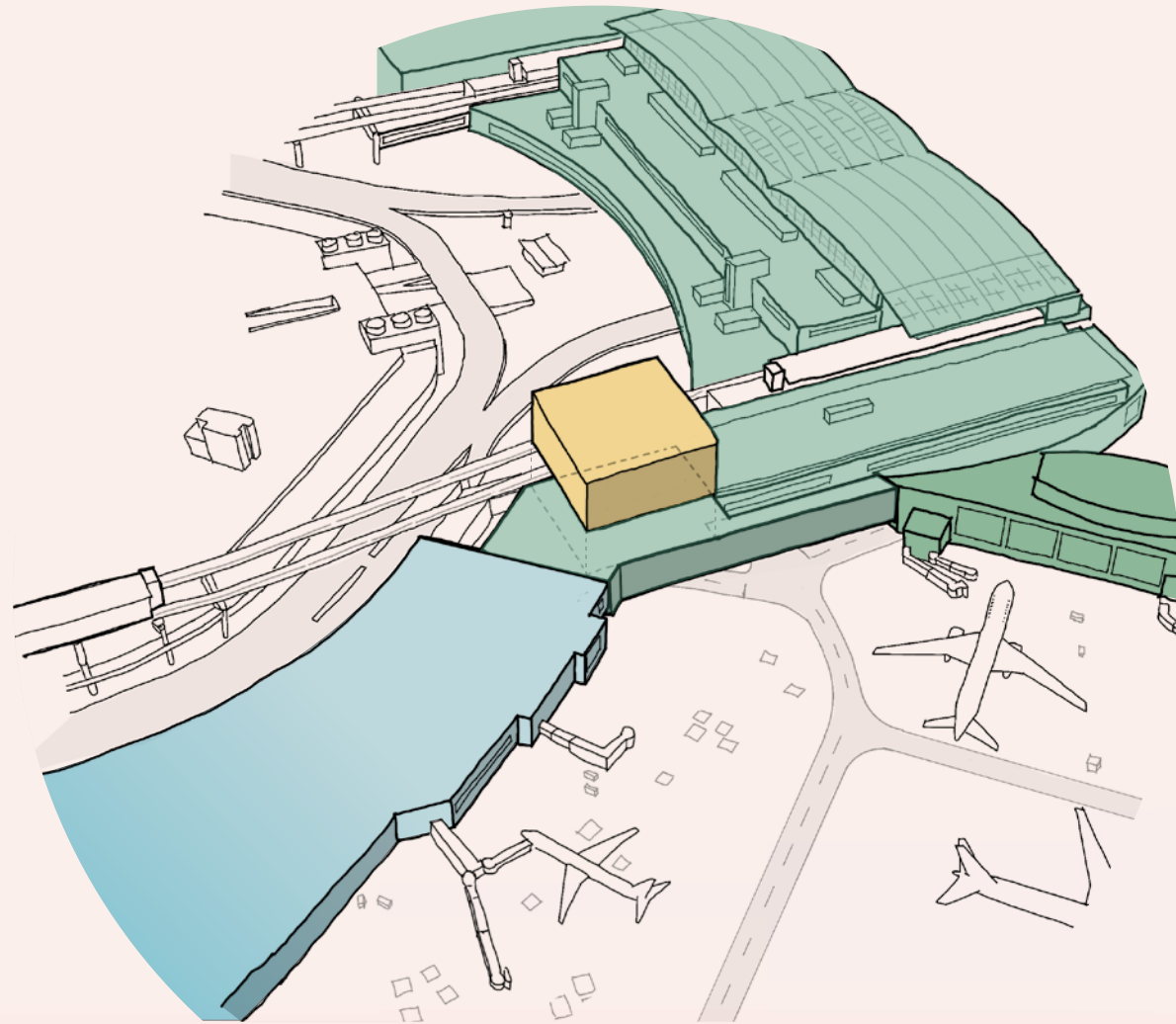


Terminal 3 aligns with the masterplan hierarchy which allows the International Terminal to remain as the “Jewel” of the Airport with primary architectural importance. Like the spokes of a key ring, the Terminal 3 design builds upon existing campus context and distinguishes its identity as a complementary “key” to the other terminals.

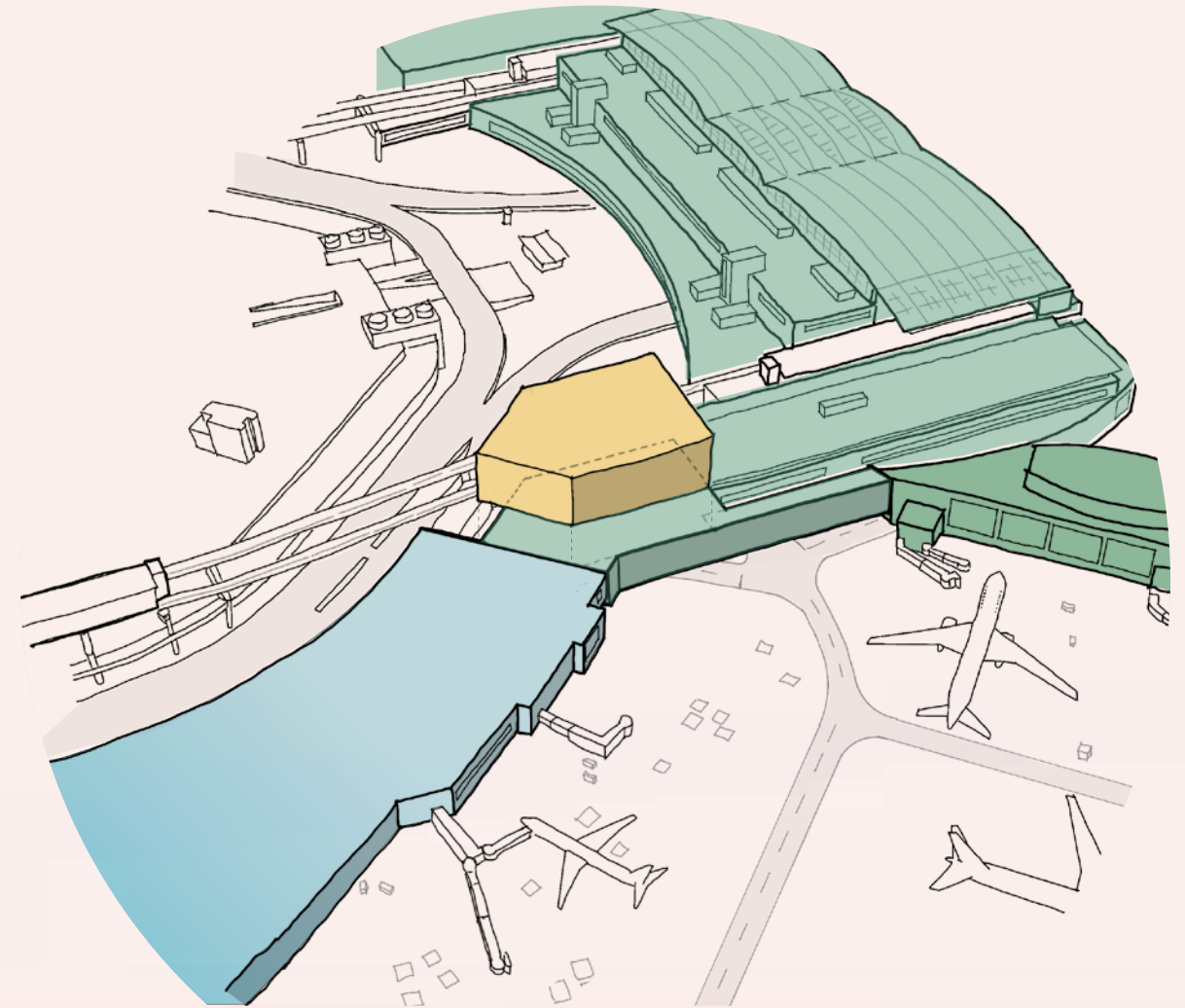




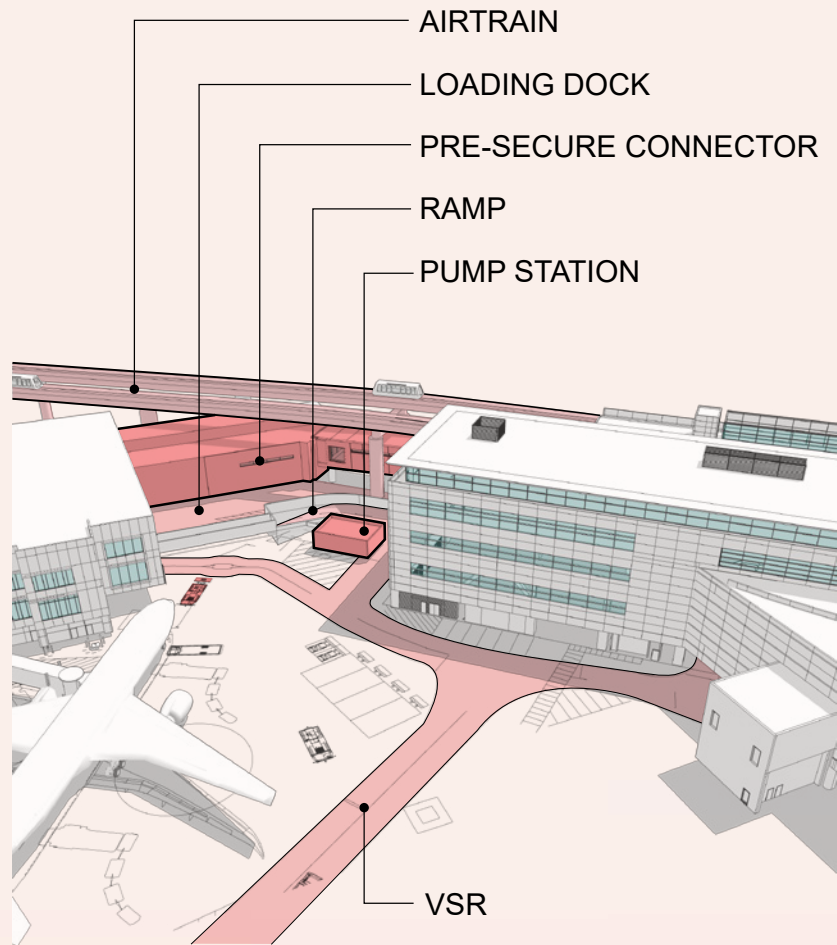




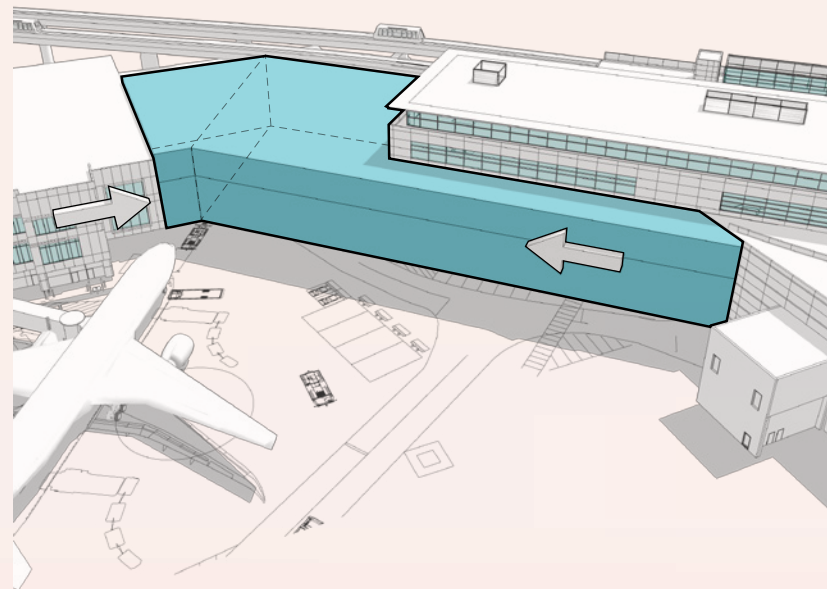
CONCEPTUAL DESIGN



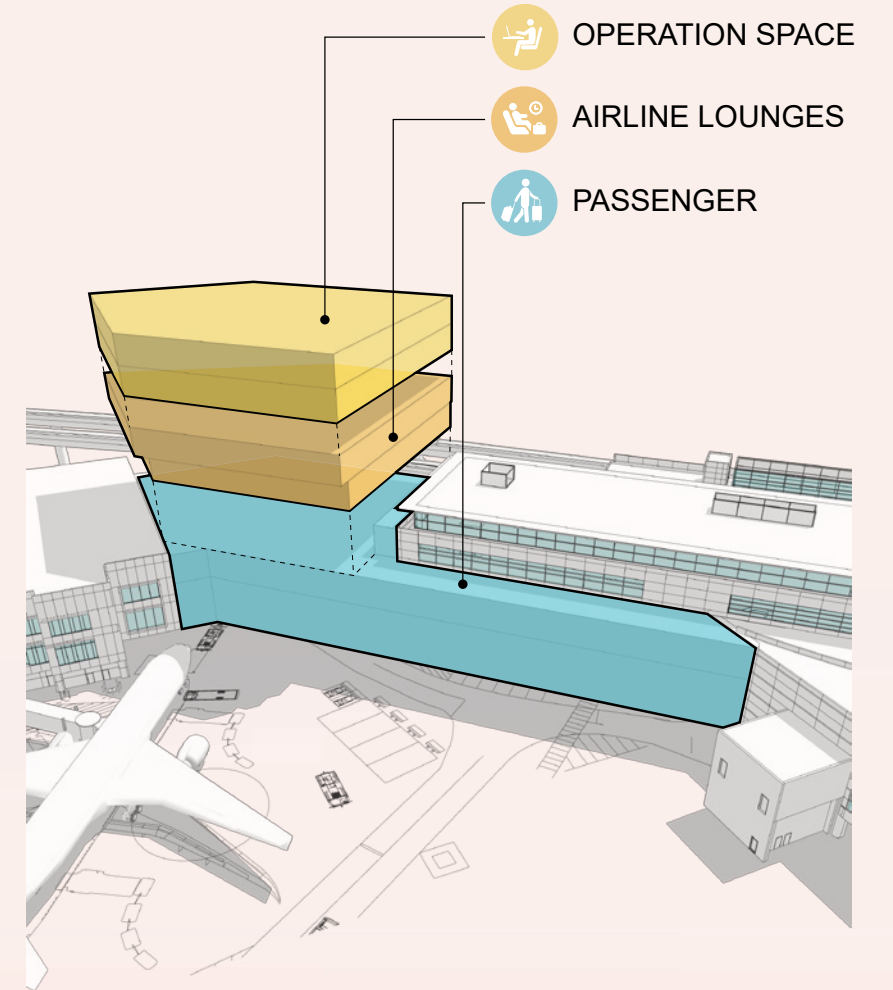
PHASE 1 | SCHEMATIC DESIGN  
**PROPOSED**



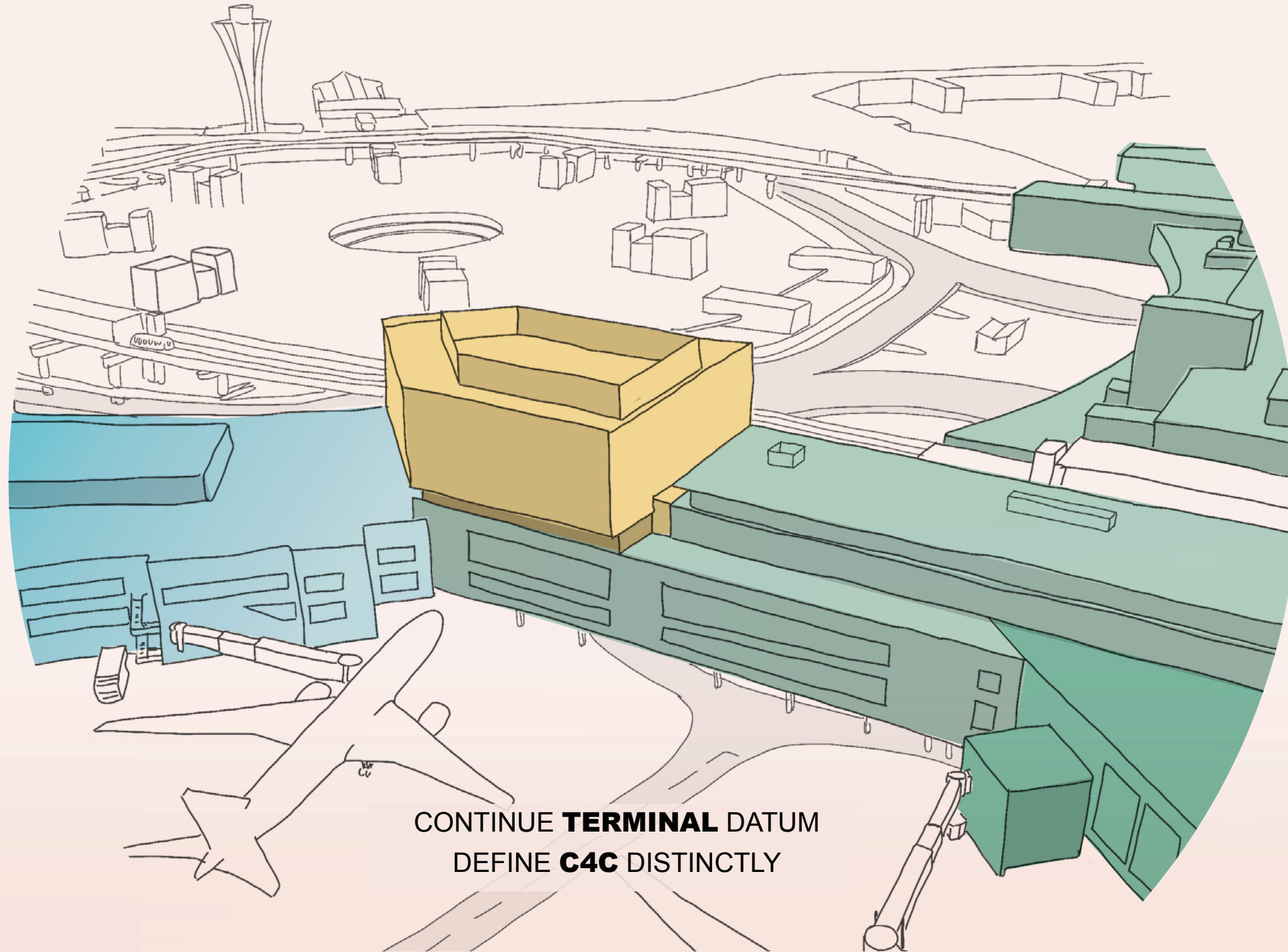
**GROUND LEVEL CONSTRAINTS**



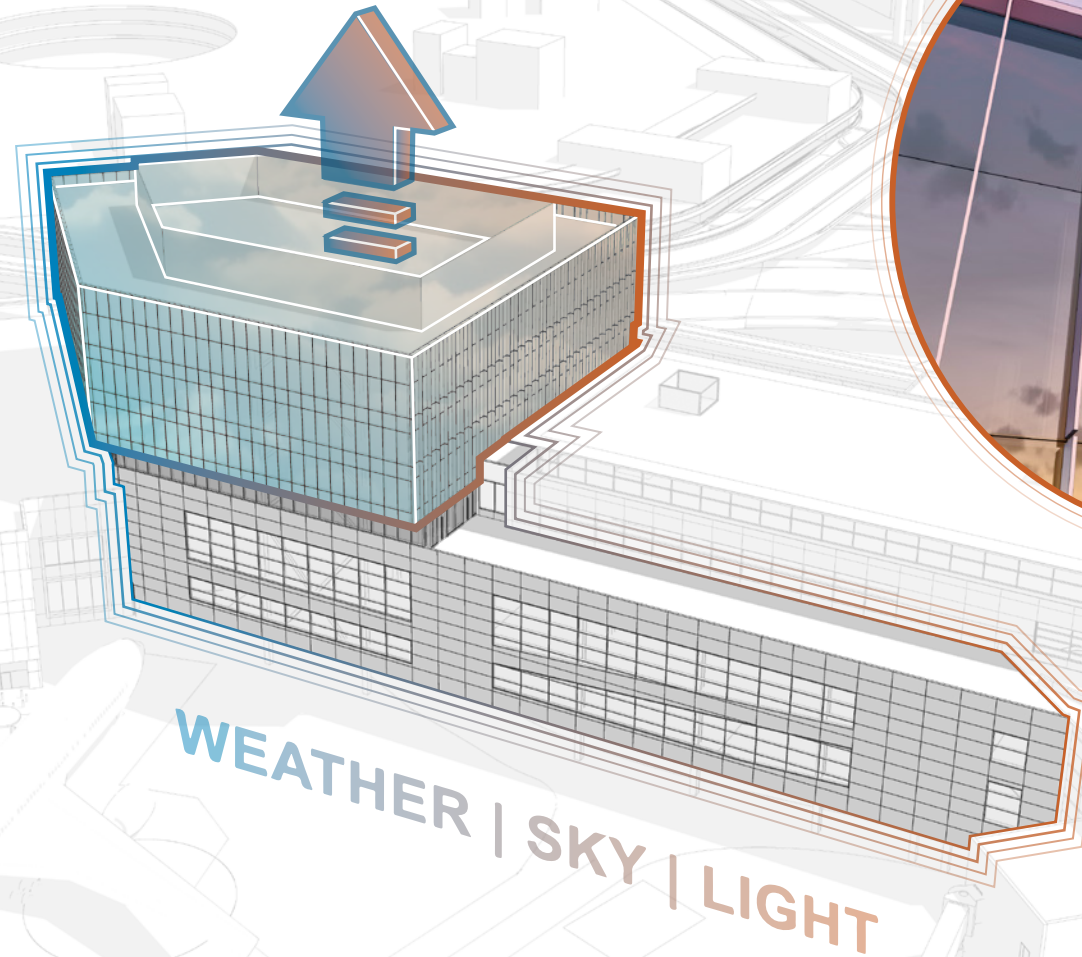
**PODIUM MASSING**



**PROGRAM**



In San Francisco, the **weather**,  
**sky** and **light** change dramatically  
throughout a single day, and is an  
ever unfolding backdrop...





**NE**

**SE**

**S**

**W**

**N**



## EAST

- LOW ANGLE OF RISING SUN
- SHORTEST SOLAR EXPOSURE
- BALANCED % OF SOLAR SHADING

## SOUTH

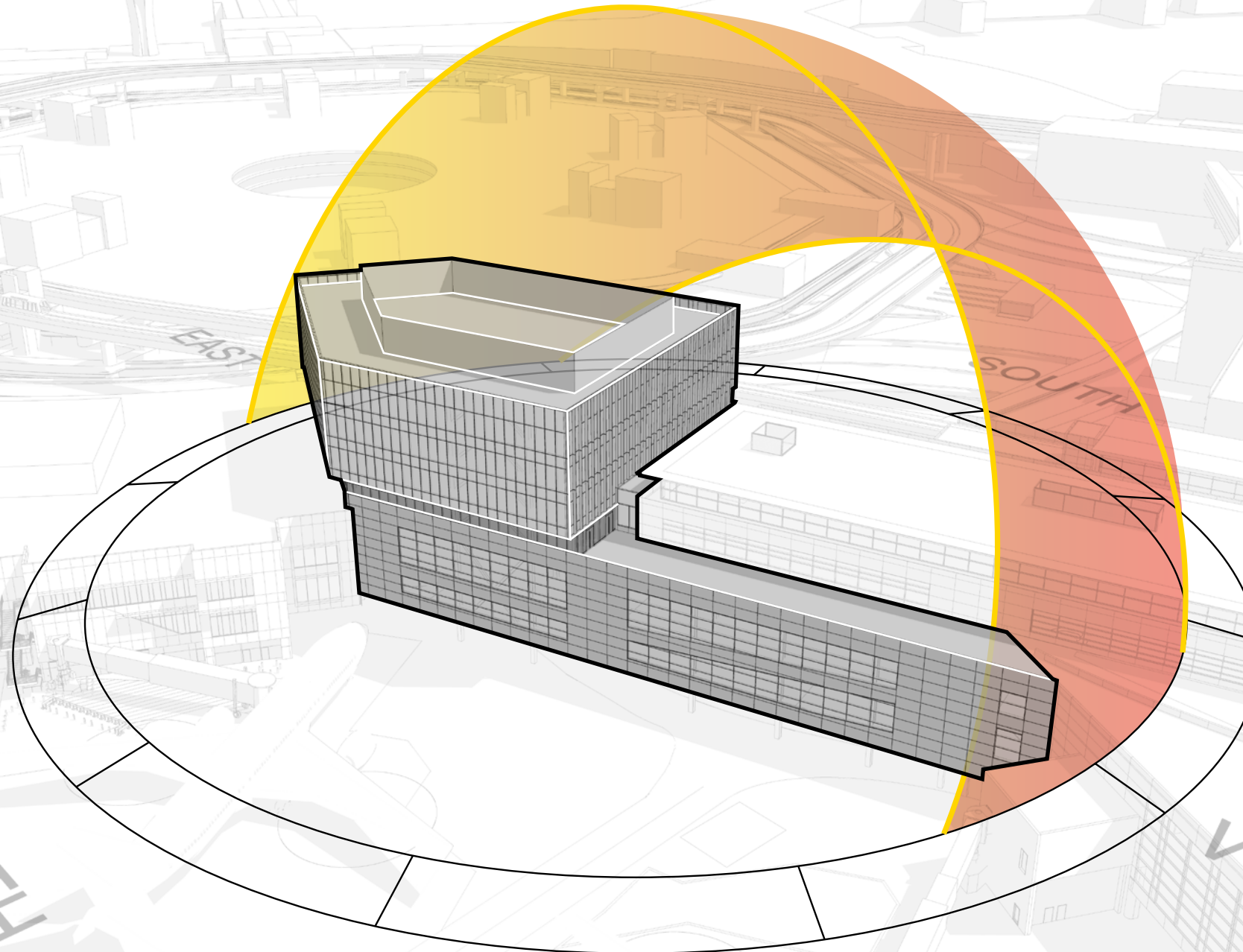
- HIGH ANGLE OF SUN
- LONGEST SOLAR EXPOSURE
- HIGHEST % OF SOLAR SHADING

## NORTH

- MINIMAL SOLAR EXPOSURE
- HIGHER % OF GLAZING

## WEST

- LOW ANGLE OF SETTING SUN
- HIGHER SOLAR EXPOSURE
- HIGHER % OF OPAQUE GLAZING



## Part II

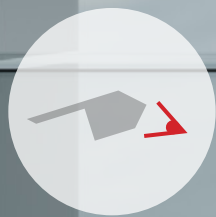
---

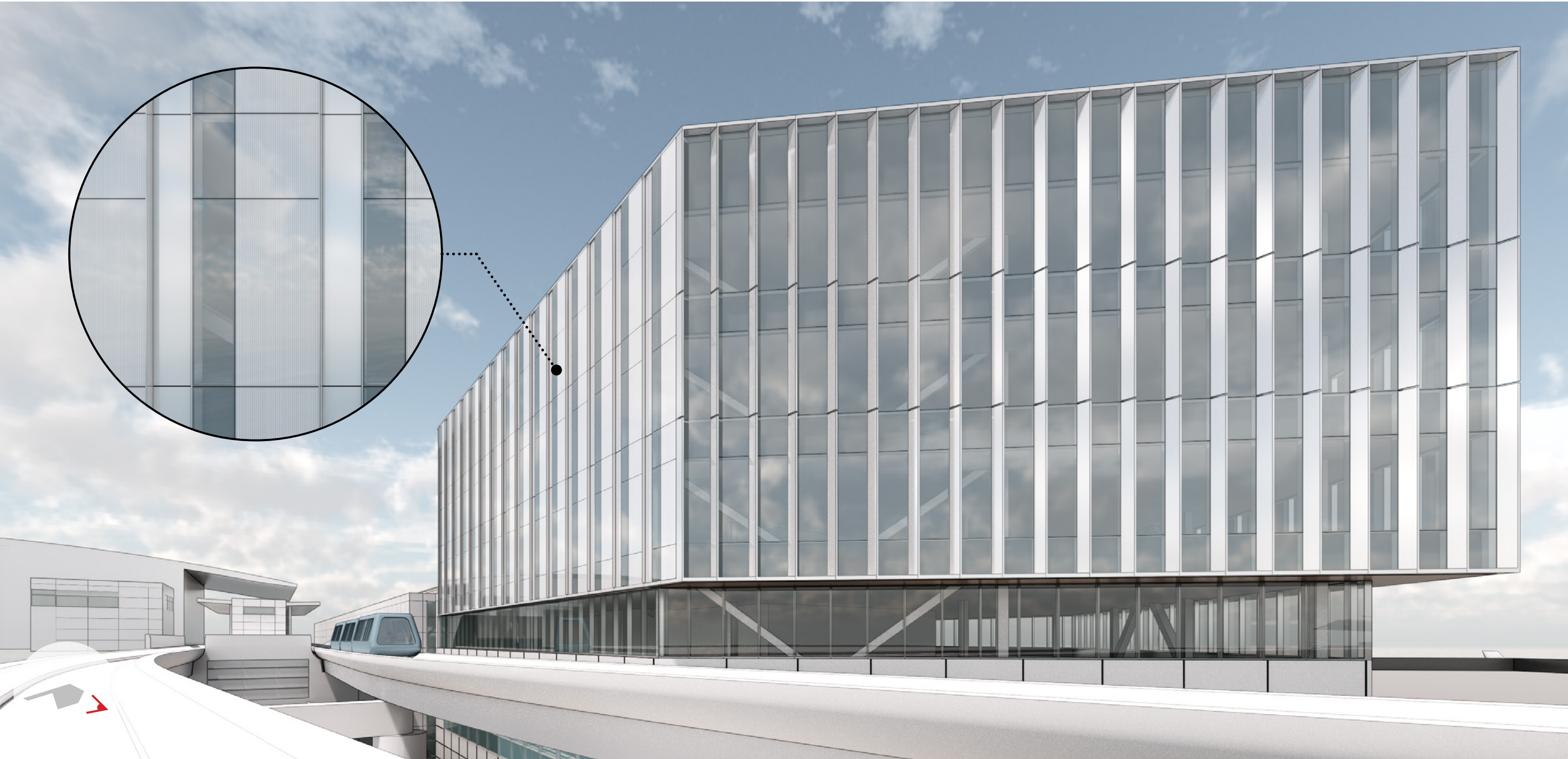
# Exterior Development

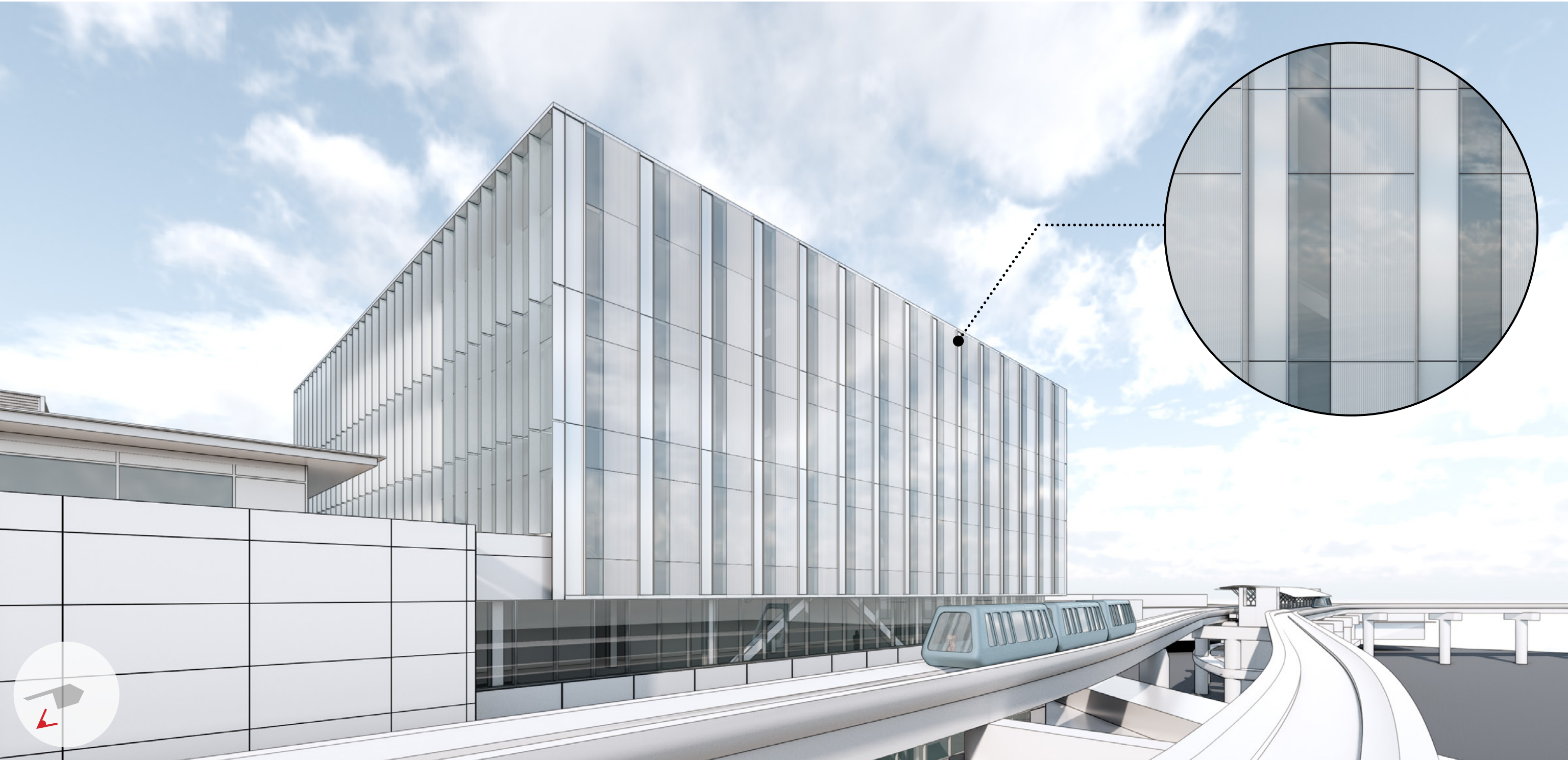
# Exterior Development **Landside**













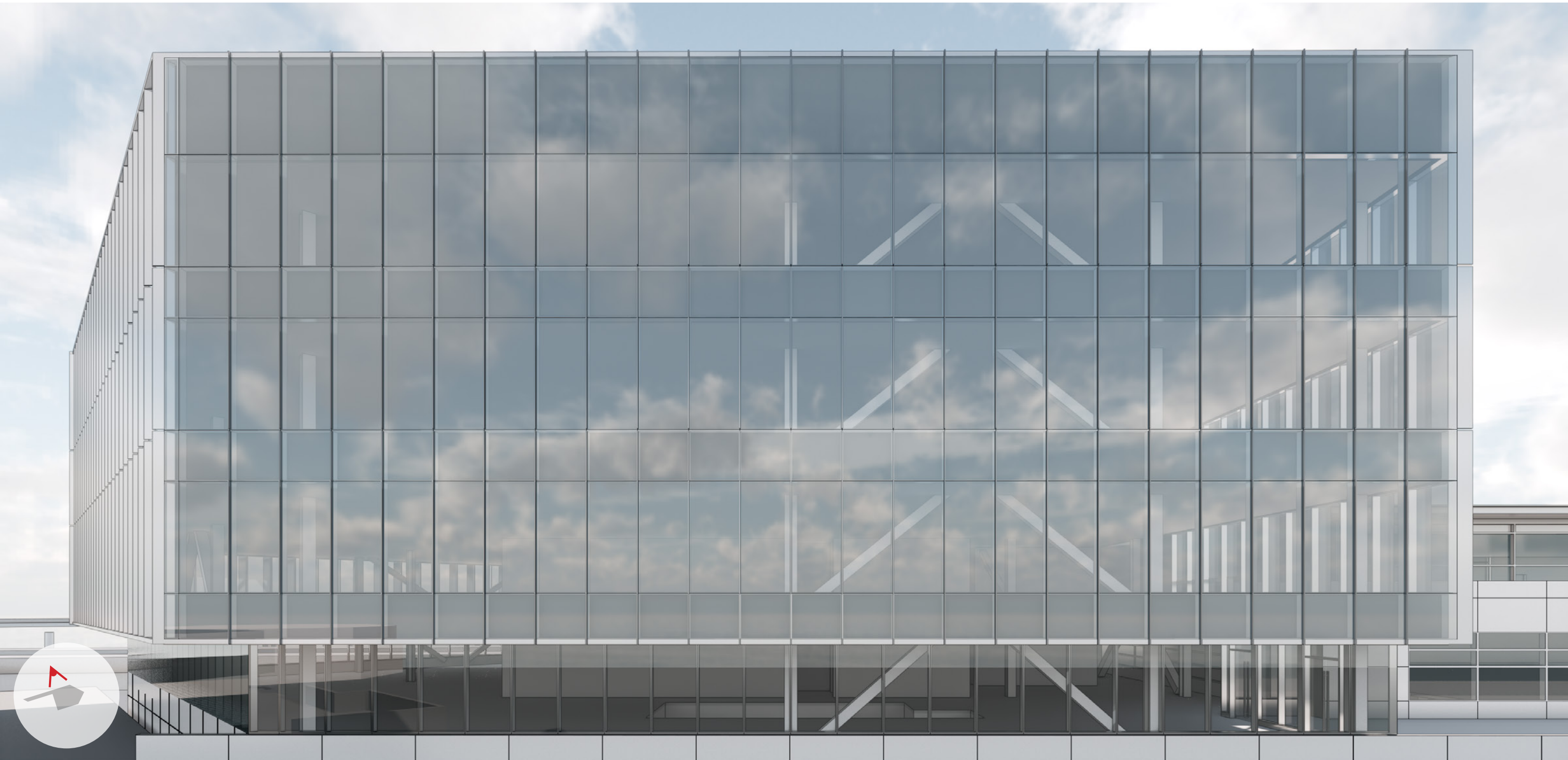


# Exterior Development

# **Airside**



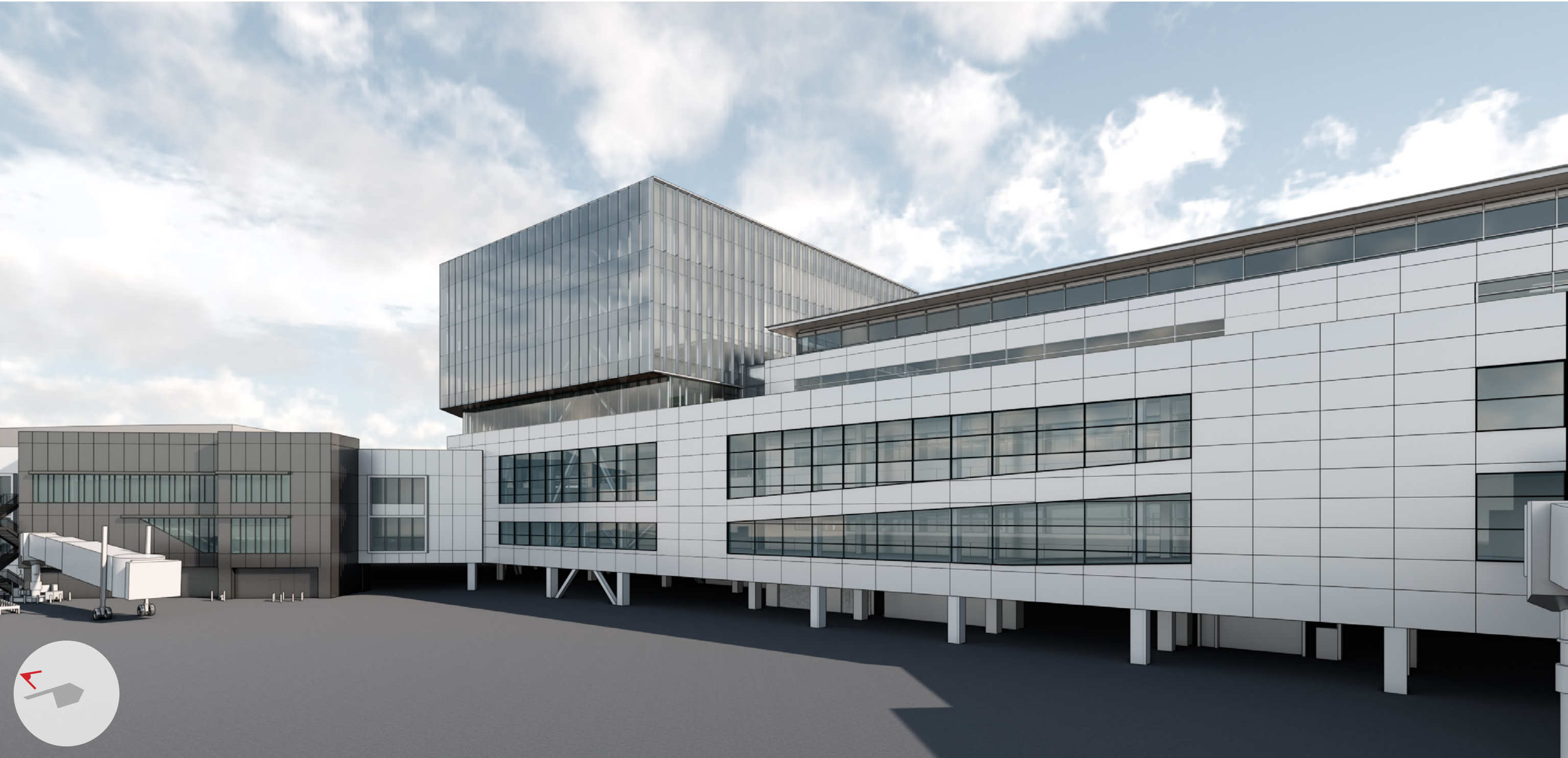






5'-0"





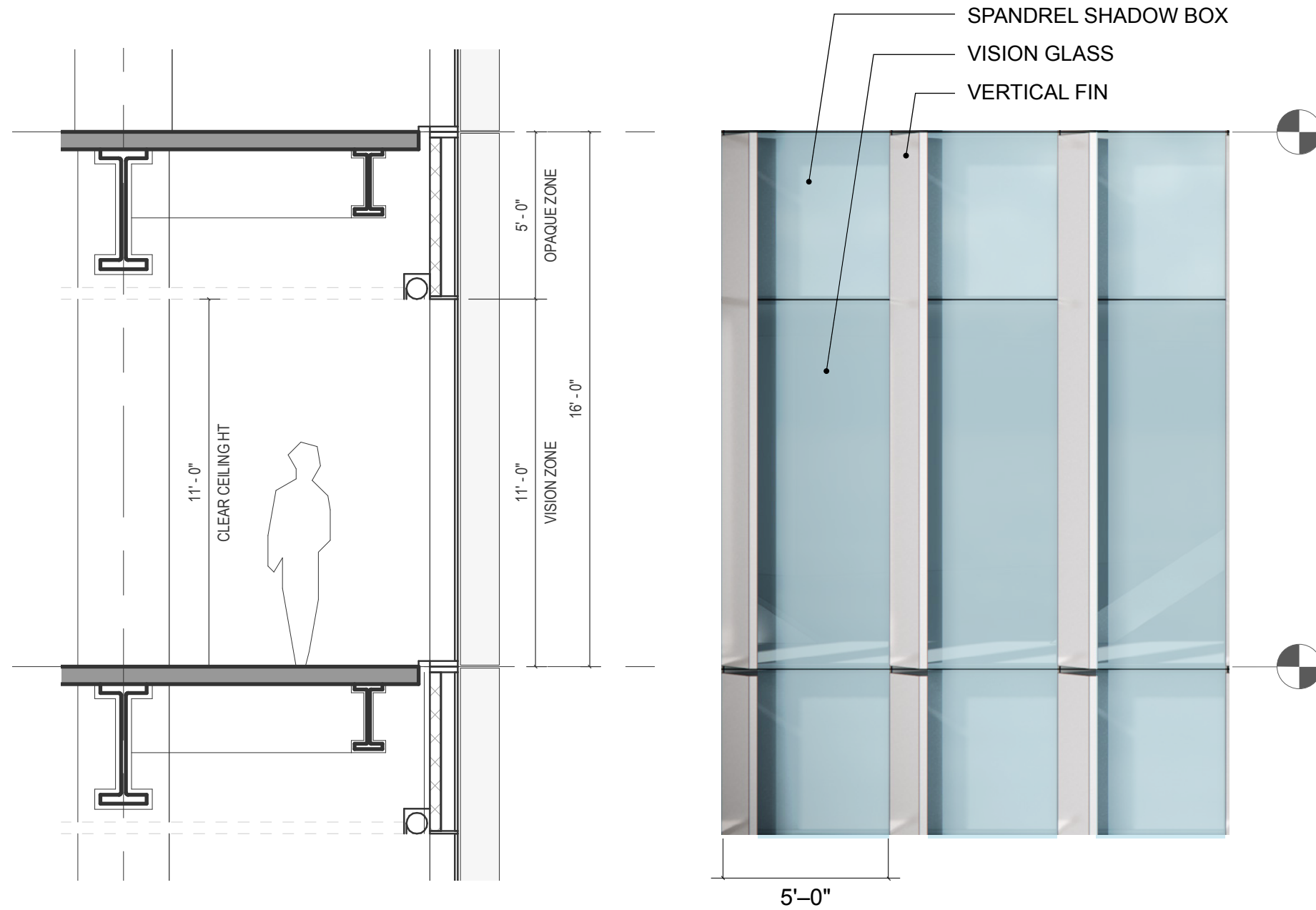
# Exterior Development

# **Animated Flythrough**

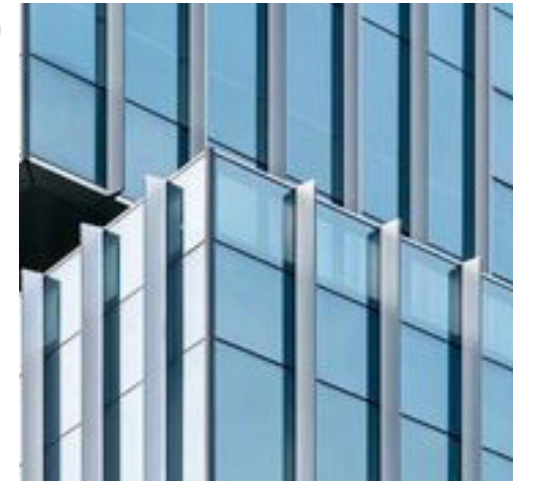
## Part III

---

# Facade Design Strategy



**EXTERIOR SHADING**  
BENT ALUMINUM PLATE FIN




**GLASS**  
IGU LOW-E COATING  
+FRIT




+ROLLER SHADES

WINDOW-TO-WALL RATIO: **60% VISIBLE** **40% SOLID**

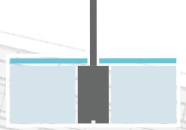
**TOWER**  
OPTIMIZE SHADE  
WITH VERTICAL FINS



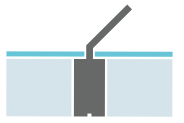
**LANDSIDE**  
MINIMIZE PROJECTIONS  
INCREASE OPACITY FOR  
SOLAR PROTECTION



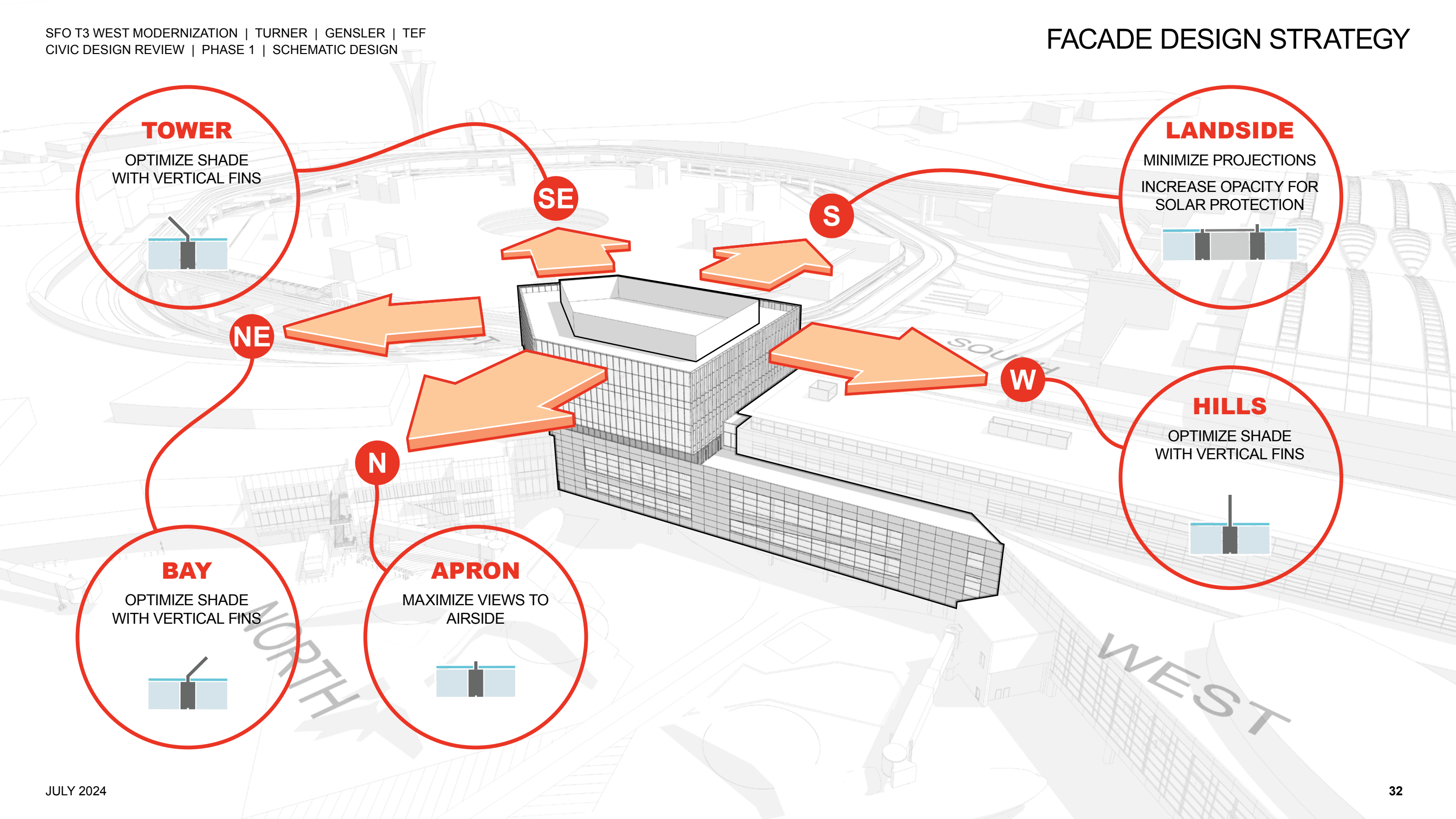
**HILLS**  
OPTIMIZE SHADE  
WITH VERTICAL FINS



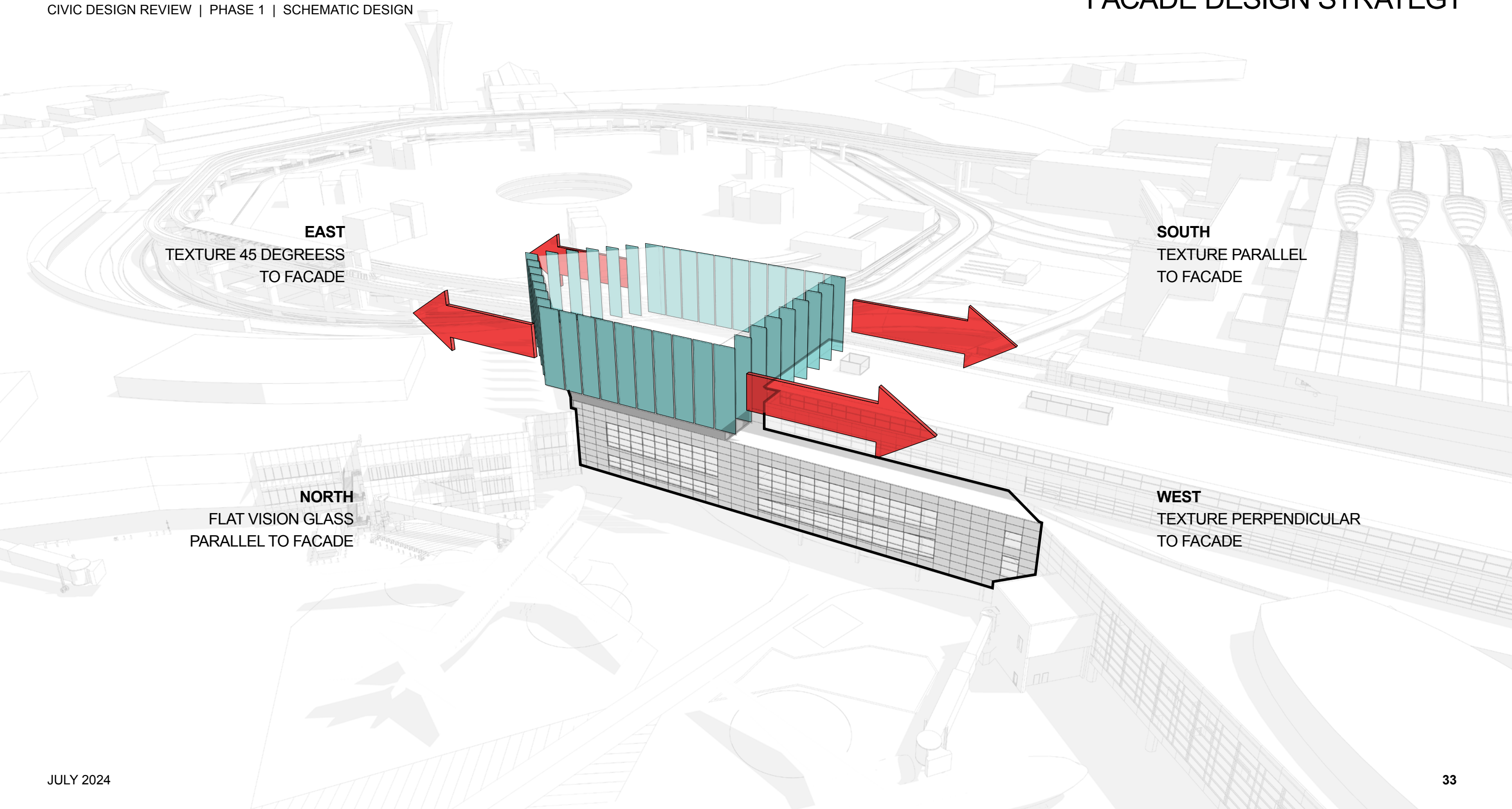
**BAY**  
OPTIMIZE SHADE  
WITH VERTICAL FINS



**APRON**  
MAXIMIZE VIEWS TO  
AIRSIDE







**EAST**  
TEXTURE 45 DEGREES  
TO FACADE

**SOUTH**  
TEXTURE PARALLEL  
TO FACADE

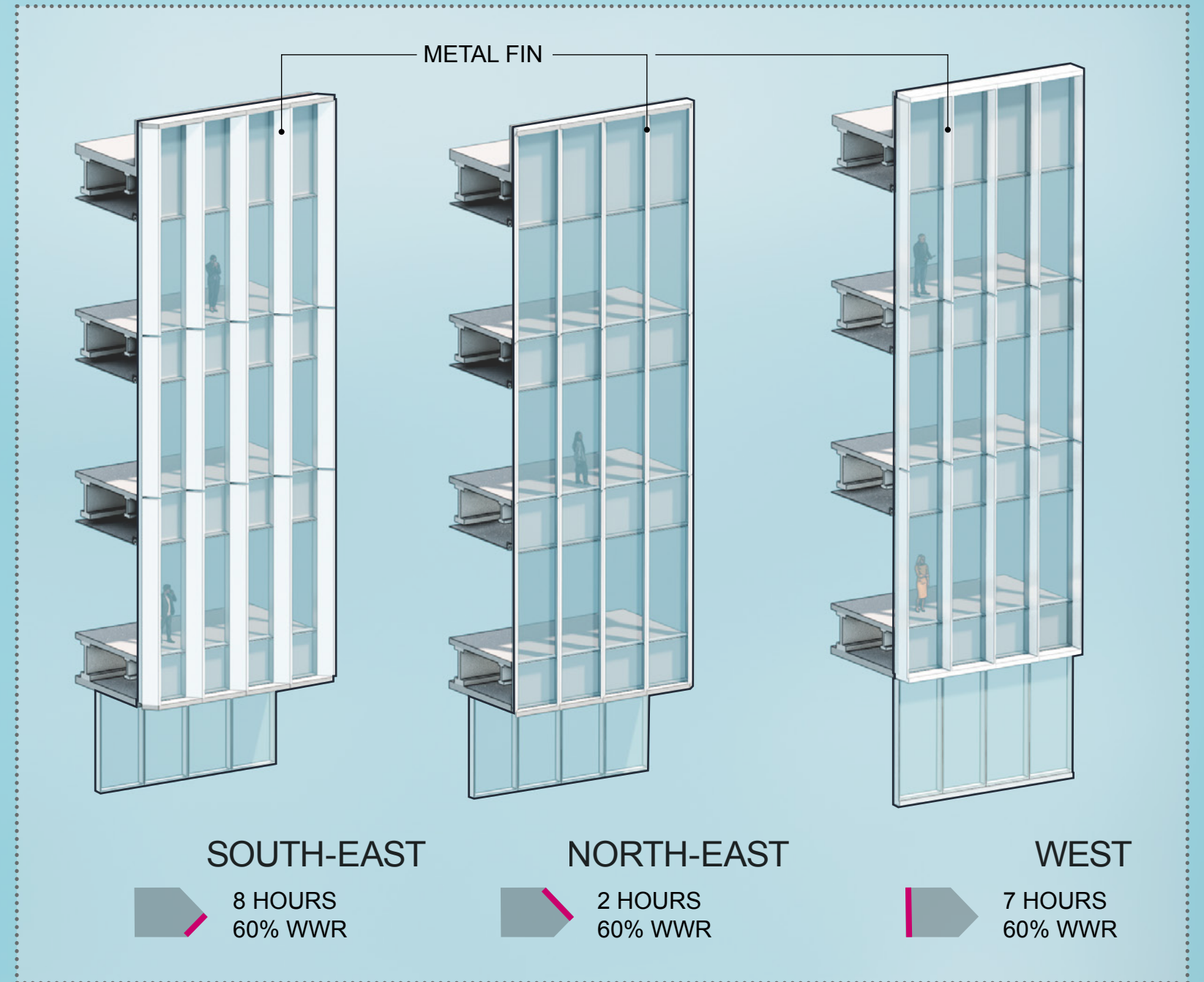
**NORTH**  
FLAT VISION GLASS  
PARALLEL TO FACADE

**WEST**  
TEXTURE PERPENDICULAR  
TO FACADE

SYSTEM 1: FLAT GLASS + PANEL



SYSTEM 2: VERTICAL FINN

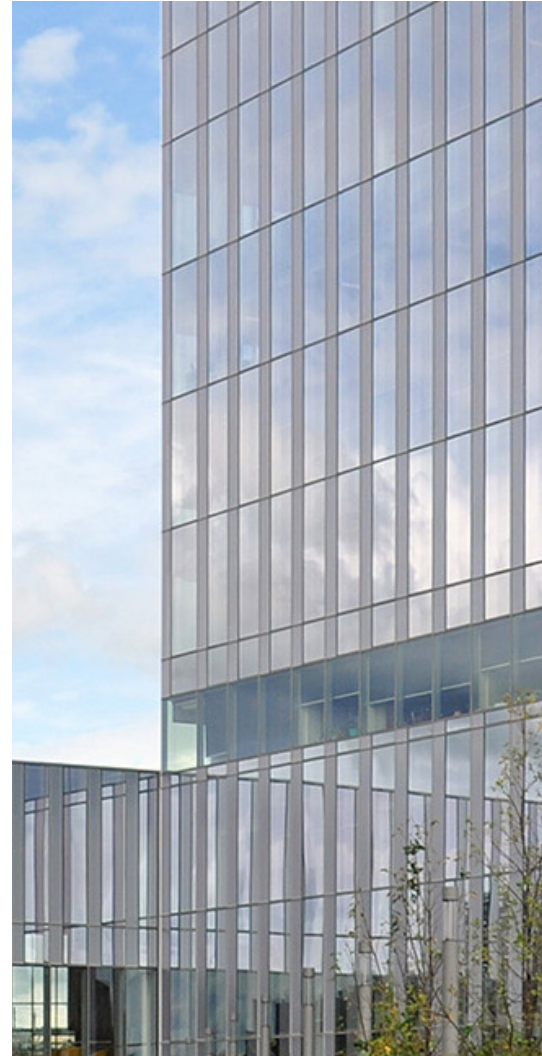




**WHITE METAL PANEL**  
PODIUM



**FRITTED GLASS**  
SOUTH FACADE



**TRANSPARENT GLAZING**  
LEVEL 4 REVEAL



**GLAZING WITH LOW-E COATING**  
LEVELS 5-7



**ALUMINUM FINNS AND PANELS**  
LEVELS 5-7

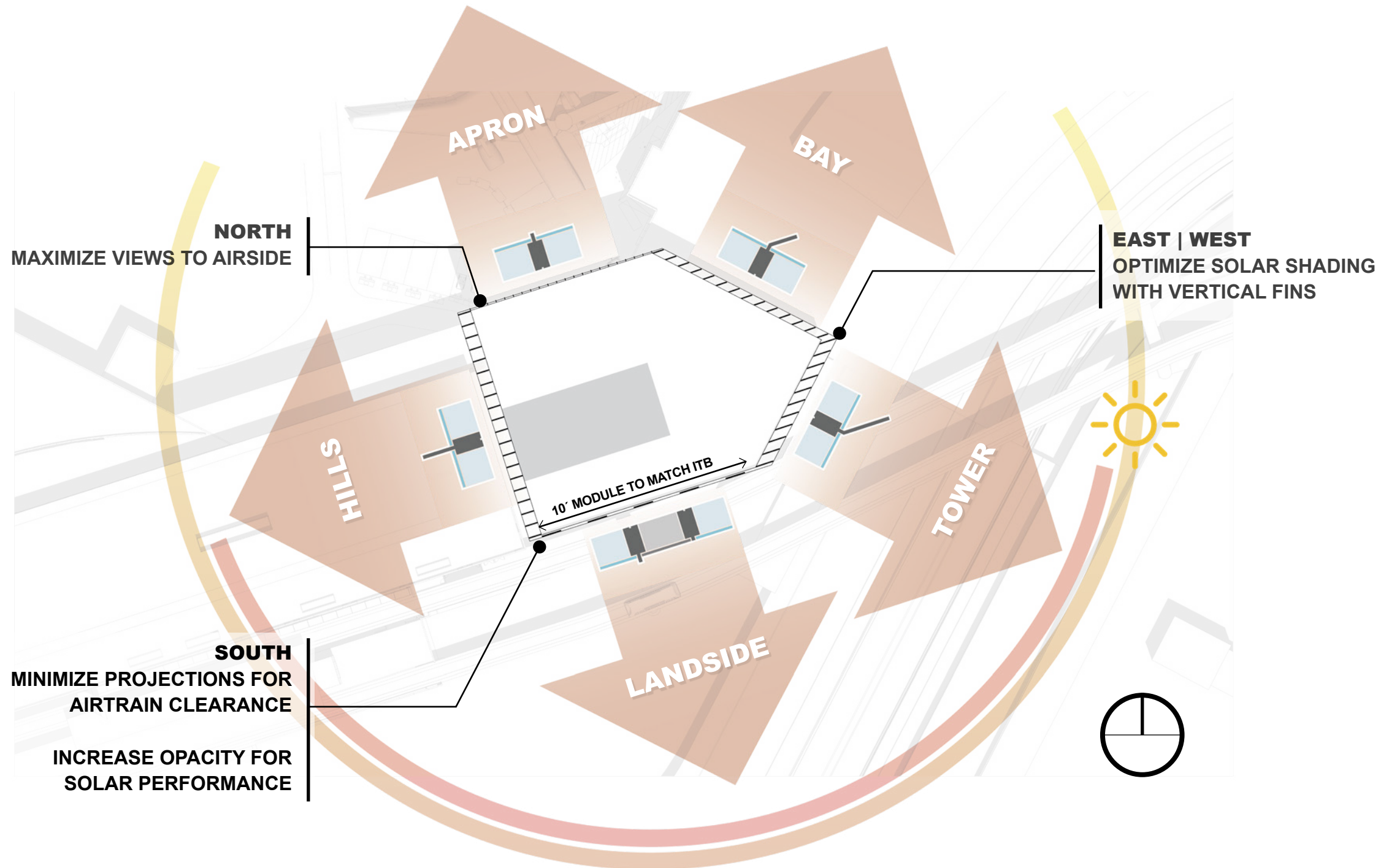
## Part IV

---

# Appendix

**C4C** IS NOT VISIBLE ABOVE THE  
**DFIT4** BUILDING FROM THE  
APPROACHING ROAD





**Thank you**



SAN FRANCISCO INTERNATIONAL AIRPORT

