



PUBLIC HEALTH LABORATORY: EMERGENCY RESPONSE READINESS.

Godfred Masinde, PhD, MBA, HCLD(ABB)
Public Health Laboratory Director

Health Commission Updates
Tuesday, June 18, 2024



POPULATION HEALTH DIVISION
SAN FRANCISCO DEPARTMENT OF PUBLIC HEALTH

Outline

DPH/PHD Org Chart/PHLs Core Functions/Networks

National/State Laboratory Response Network/Present Threats

How are we ready to respond to emergency testing

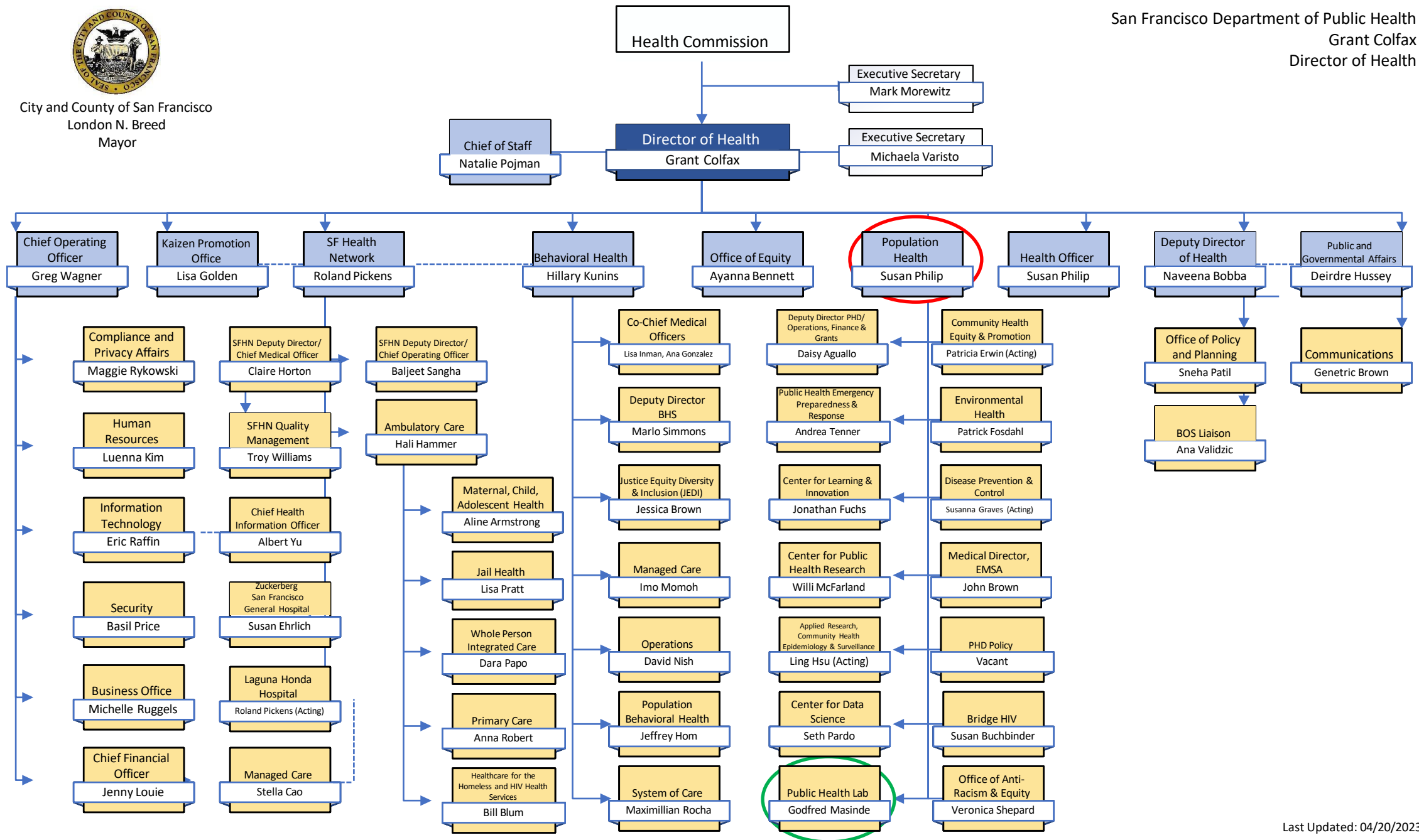
COOP/New home of PHL/BSL3





City and County of San Francisco
London N. Breed
Mayor

San Francisco Department of Public Health
Grant Colfax
Director of Health



Population Health Division (PHD)

Organizational Chart – Executive and Branches

Revised September 2023



Grant Colfax
Director of Health

Susan Philip
Health Officer
PHD Director &
SF Health Officer

Shonika Kumar
(1840)

(2233 Vacant)
Deputy Health Officer
Research, Learning and
Development

Bridge HIV
Susan Buchbinder (2233)

**Center for Public Health
Research (CPHR)**
Willi McFarland (2232)

**Center for Learning and
Innovation (CLI)**
Jonathan Fuchs (2232)

**Information & Guidance
(I&G)**
Vacant (0922)

Daisy Aguallo
Deputy Director of Operations,
People & Infrastructure (0941)

**Policy, Contracts & Government
Affairs**
Eduardo Sida (acting)
Vacant (0923)

Performance Improvement
Vacant (2593)
Radha Rai (acting)

Central Management
Charles Fann (0931)

Operations
Vacant (0931)

Vital Records
Erika Campos (1823)

DPH/PHD Finance
Maggie Han
(1823)

Compliance
Joseph Gorndt
(1824)

(0943 Vacant)
Deputy Director Surveillance, Data
and Analytics

**Applied Research
Community Health Epi &
Surveillance (ARCHES)**
Vacant (0931)
AJ Jones (HIV)
Melissa Sanchez
(TB/CD/Viral Hep)
Trang Nguyen (STD)

**Center for Data
Science (CDS)**
Seth Pardo (0922)

(2233 Vacant)
Deputy Health
Officer, Public Health
Services

**Disease Prevention &
Control (DPC)**
Susannah Graves (acting)
(2233)

**Public Health Lab Services
(PHL)**
Godfred Masinde (0932)

Environmental Health (EH)
Patrick Fosdahl (0953)

**Public Health Emergency
Preparedness and
Response Branch (PHEPR)**
Andi Tenner (2233)

**Emergency Medical
Services Agency (EMSA)**
Medical Director
John Brown (2233)

Asa King
Deputy Director
Community Health (0953)

**Office of Anti-Racism &
Equity (OARE)**
Veronica Shephard (0922)

**Community Health and Equity
Promotion (CHEP) (0931)**
Nikole Trainor (Admin)
Christina Goette (Wellness)
Nyisha Underwood
(Sexual/Drug use)

**Equity and Community
Engagement (ECE)**
Isela Ford (acting) (0922)

Color Key

PHD Executive Deputies

PHD Branches



The 11 Core Functions



Disease Prevention,
Control and
Surveillance



Food Safety



Public Health
Related Research



Integrated Data
Management



Laboratory
Improvement and
Regulation



Training and
Education



Reference and
Specialized Testing



Policy
Development



Partnerships and
Communication



Environmental
Health and
Protection

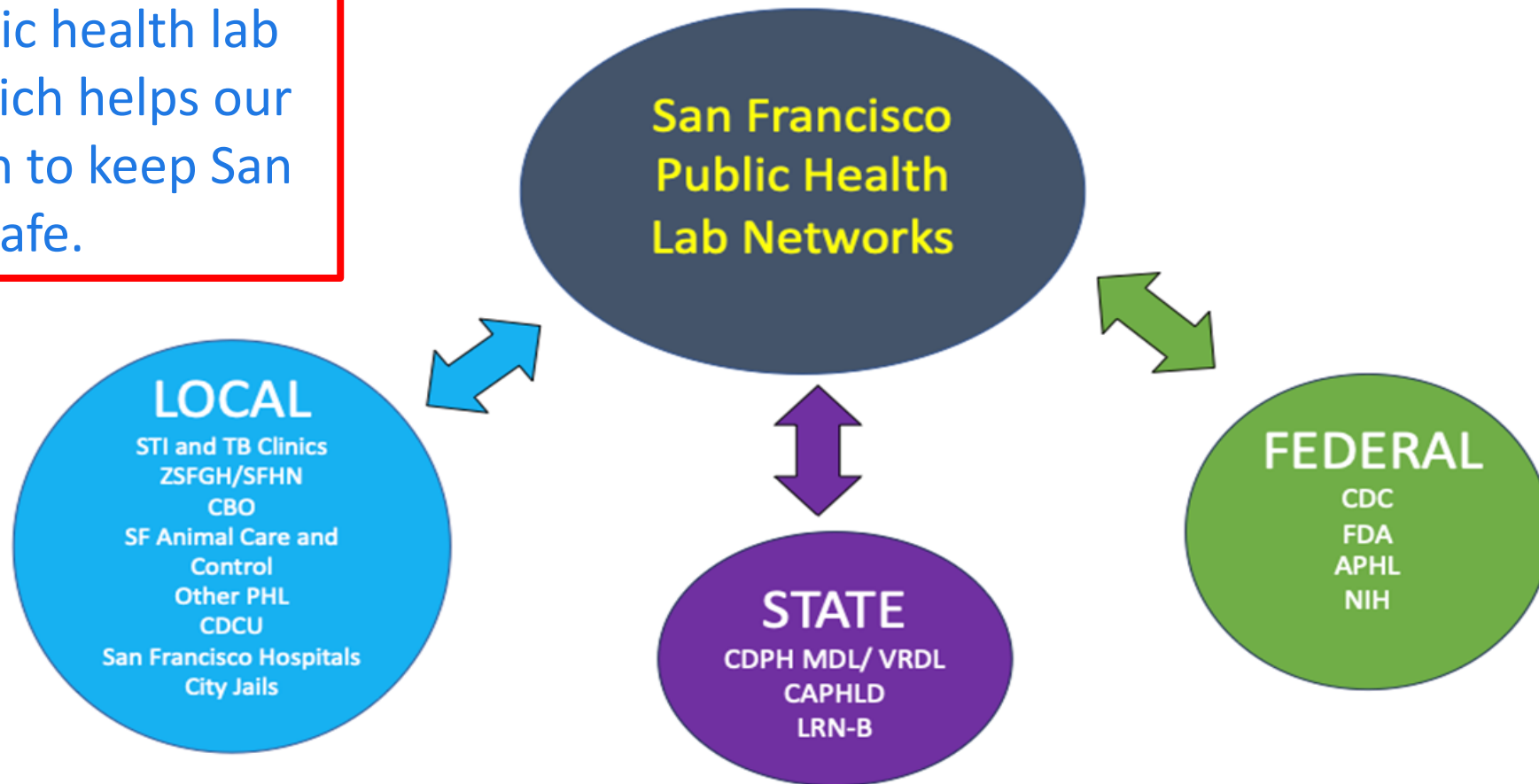


Public Health
Preparedness and
Response



Public Health Laboratory Networks

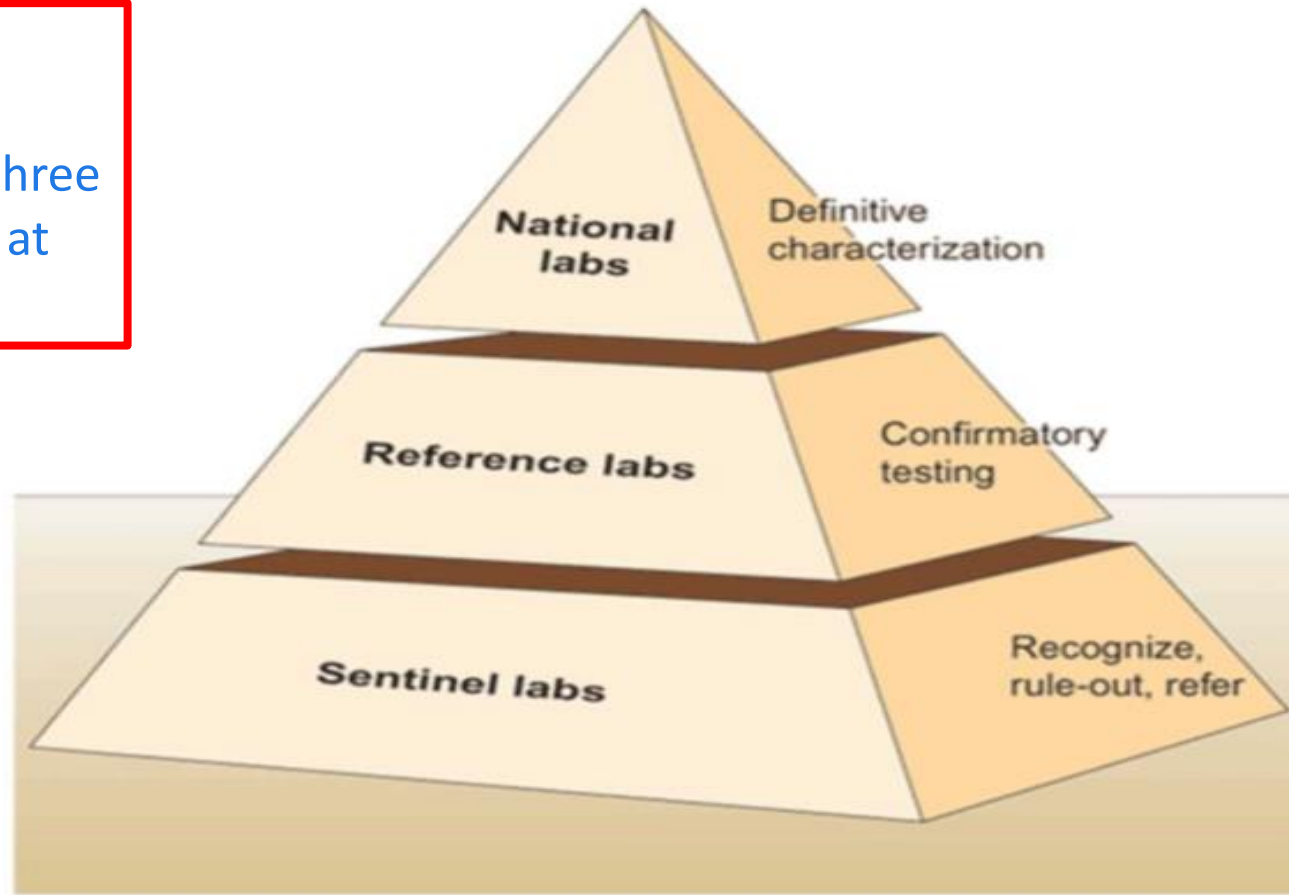
PHL is the link for SF to the broader public health lab networks which helps our work/mission to keep San Franciscans safe.



National Laboratory Response Network

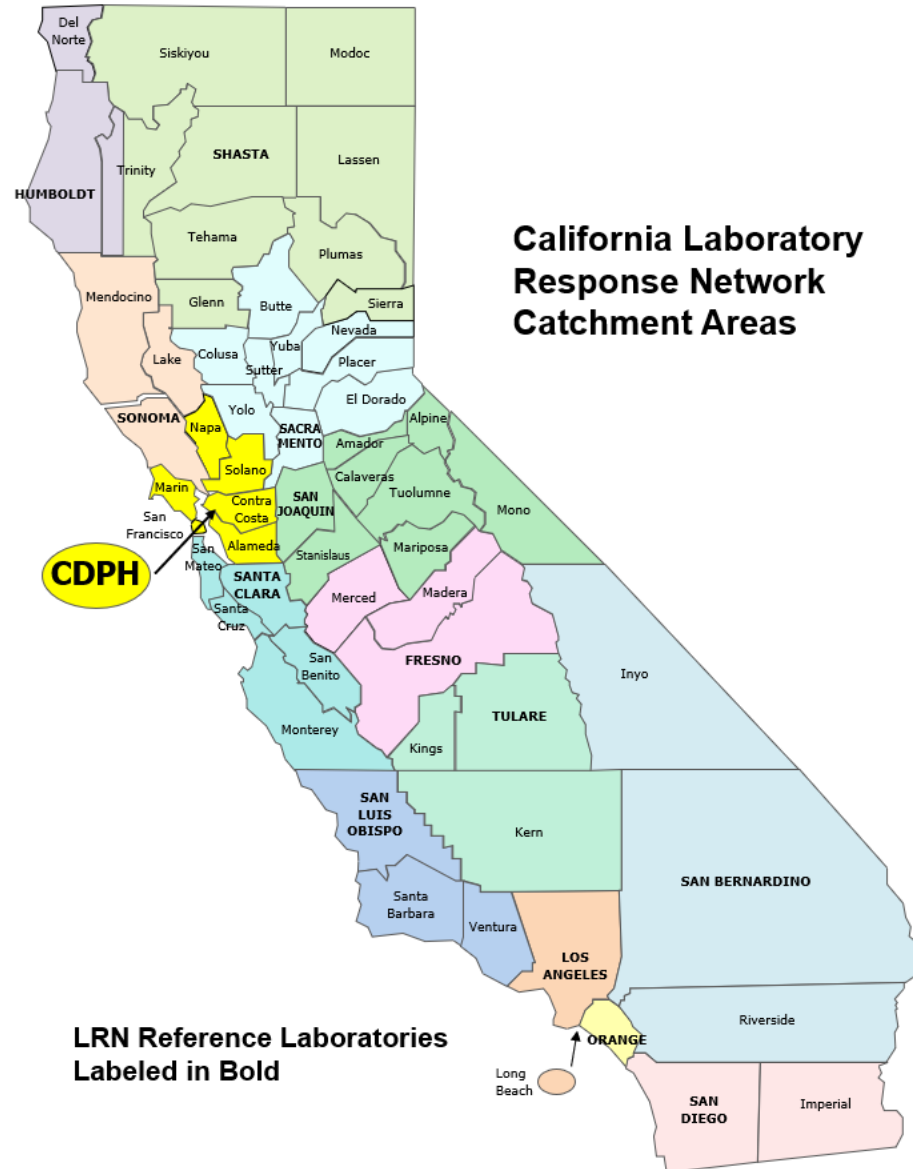


National Emergency Laboratory Response testing is divided into three areas, presently PHL is at Sentinel level



California Laboratory Response Network

California Emergency Laboratory Response testing is divided into 12 catchment areas, PHL is under CDPH.



Looming Outbreak: Two chickens in SF tested positive for H5N1 avian flu in May 2024



The San Francisco public health department found two cases of H5N1 avian flu at a live poultry market and DNA traces in wastewater, but there are no signs of public exposure or illness.
Michael Short/Special to the Chronicle



BREAKING

Bird Flu (H5N1) Explained: Third U.S. Dairy Farm Worker Infected With Bird Flu—With New Symptoms

Arianna Johnson Forbes Staff

Johnson is a reporter on the Forbes news desk who covers explainers.

Follow

1

May 30, 2024, 02:52pm EDT

OPINION
GUEST ESSAY

Why the New Human Case of Bird Flu Is So Alarming

June 2, 2024



POPULATION HEALTH DIVISION
SAN FRANCISCO DEPARTMENT OF PUBLIC HEALTH

Resources Ready



PHL Laboratory Staffing

Technical Managers/ Supervisors	2463 Micro I/II	Lab Tech I/II	Operational Staff
5 FTE	9 FTE	9 FTE	3 FTE
1 Vacant Positions	No Vacant Positions	2 Vacant Positions	No Vacant Positions

Maintaining enough Staff



Diverse Equipment for Testing

Allows
Redundancy,
flexibility and
Scaling up.

Abbott Alinity



Hologic Panther



Cepheid GeneXpert



Roche Cobas 5800



BioMerieux BioFire



Clear Labs sequencer



DiaSorin Liaison XL



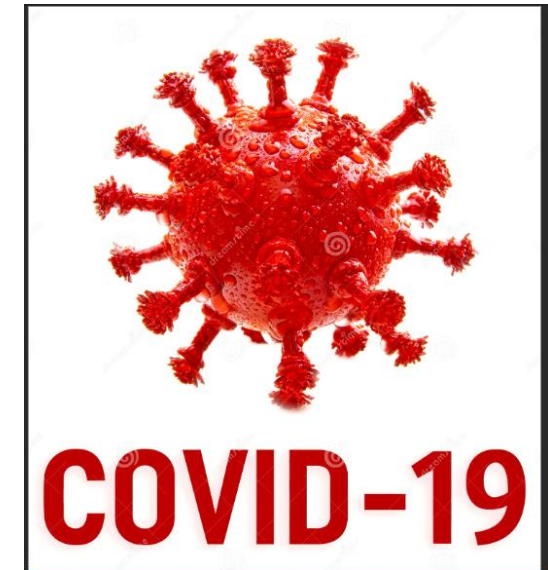
QuantStudio DX



Maintaining a State of Readiness

Reemerging diseases:

Presently testing at lower volumes but ready to scale up if need be.



Mpox Fourplex PCR shared with PHLs in USA

Shared Lab Developed Test (LDT) with 18 other PHLs around the country



Electronic Data Exchange

Faster data delivery to all our partners electronically.



eCW



PHLIP



HL7



California Public Health Laboratories

ETOR



POPULATION HEALTH DIVISION
SAN FRANCISCO DEPARTMENT OF PUBLIC HEALTH

PHL Continuation of Operations (COOP)

If there is an earthquake, fire or flooding and building is not safe, PHL would be temporarily closed, testing will need to be rerouted to partners.



Alameda County Public Health Lab
San Mateo County Public Health Lab



Future Home of PHL with BSL3 by July 25



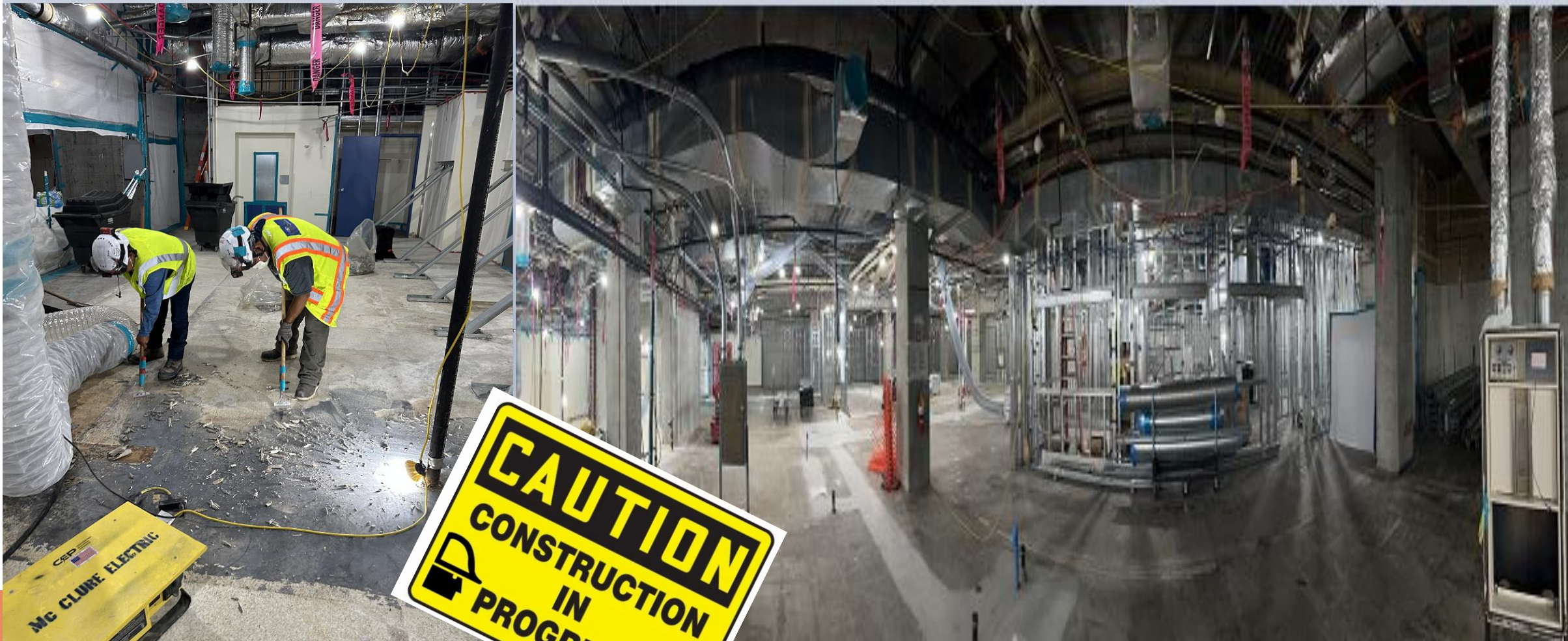
BSL3 View

Biosafety levels (BSL) dictate the types of work practices allowed to take place in a lab setting; they influence the overall design of a facility and the type of specialized safety equipment in it.

New Lab



ZSFGH Building 5 PHL Construction in progress





THANK YOU!

Godfred.masinde@sfdph.org | 415-554-2685 |



Design by Mehroz Baig v. 2017-4-14



POPULATION HEALTH DIVISION
SAN FRANCISCO DEPARTMENT OF PUBLIC HEALTH