

ILLUMINATE

Preposed new works for the Golden Mile on JFK Promenade

Submitted by Illuminate for installation in September 2024

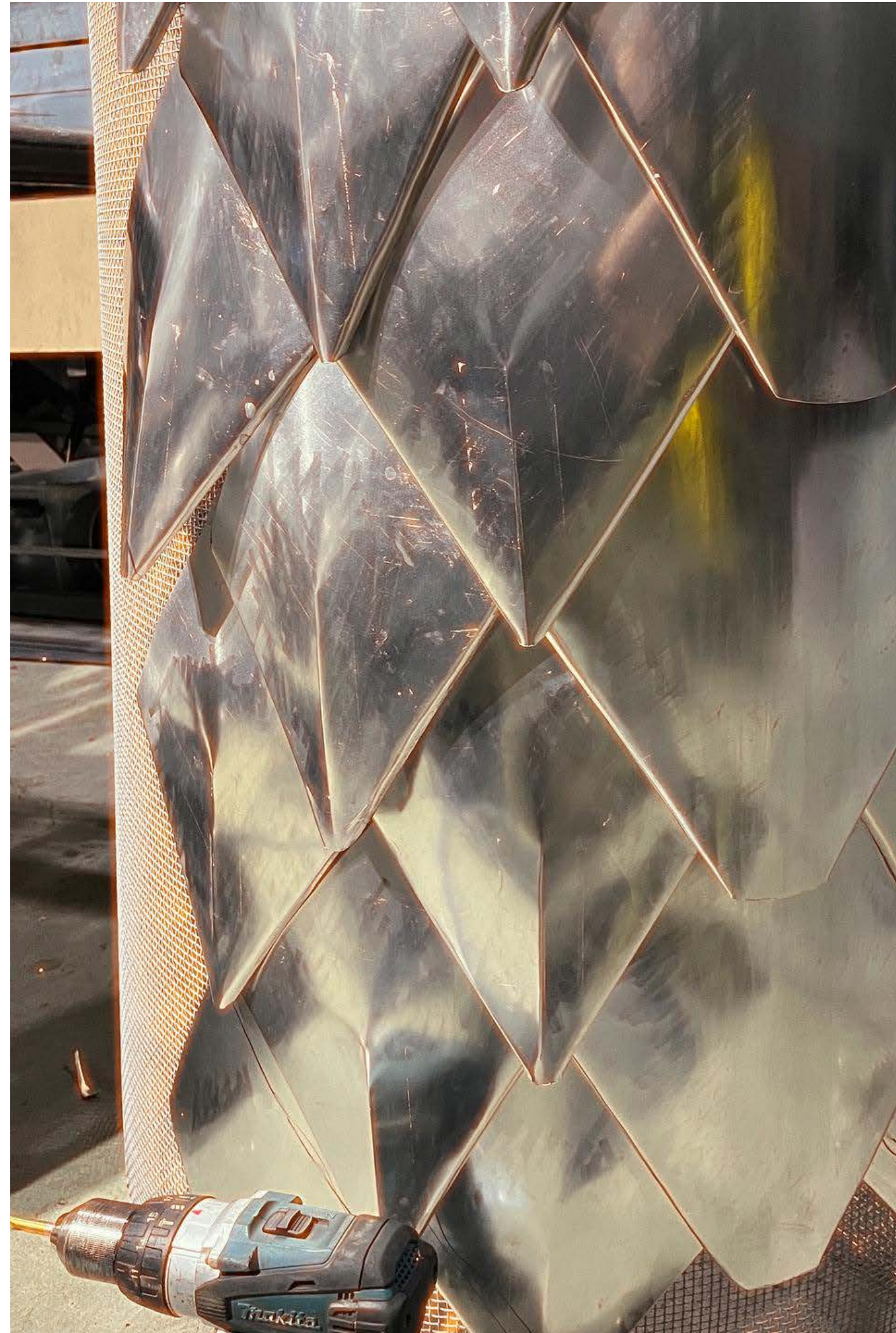
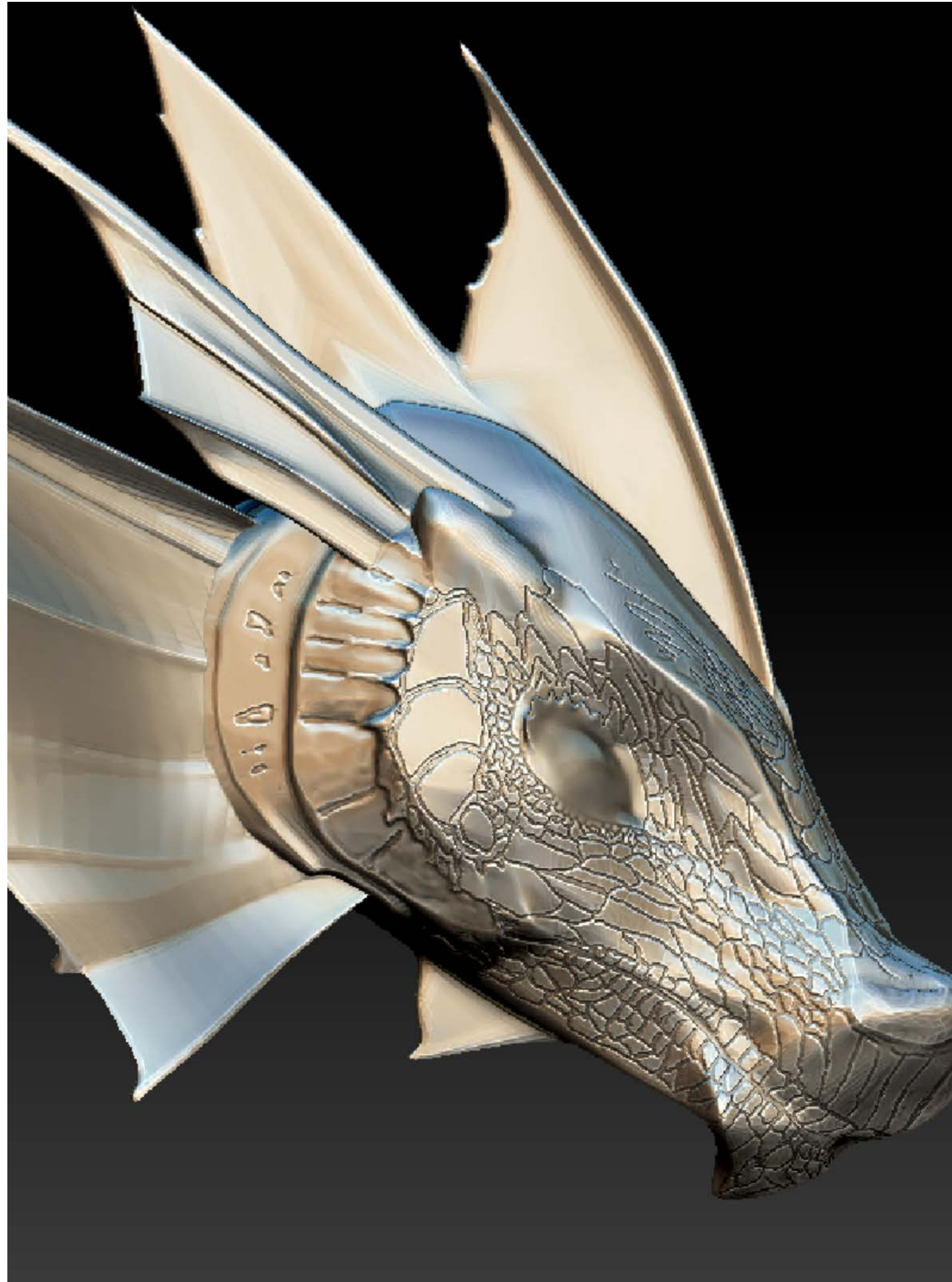
Naga (sea serpent) Installation @ Rainbow Falls

An aerial photograph of a lush, green forest. A paved road with white parking lines and a red curb runs horizontally across the lower half of the image. Above the road, a waterfall cascades down a rocky ledge into a pool of water. The surrounding area is densely packed with trees of various shades of green. The text 'Naga (sea serpent) Installation @ Rainbow Falls' is overlaid in large, white, sans-serif font across the upper portion of the image.

Who is Naga?

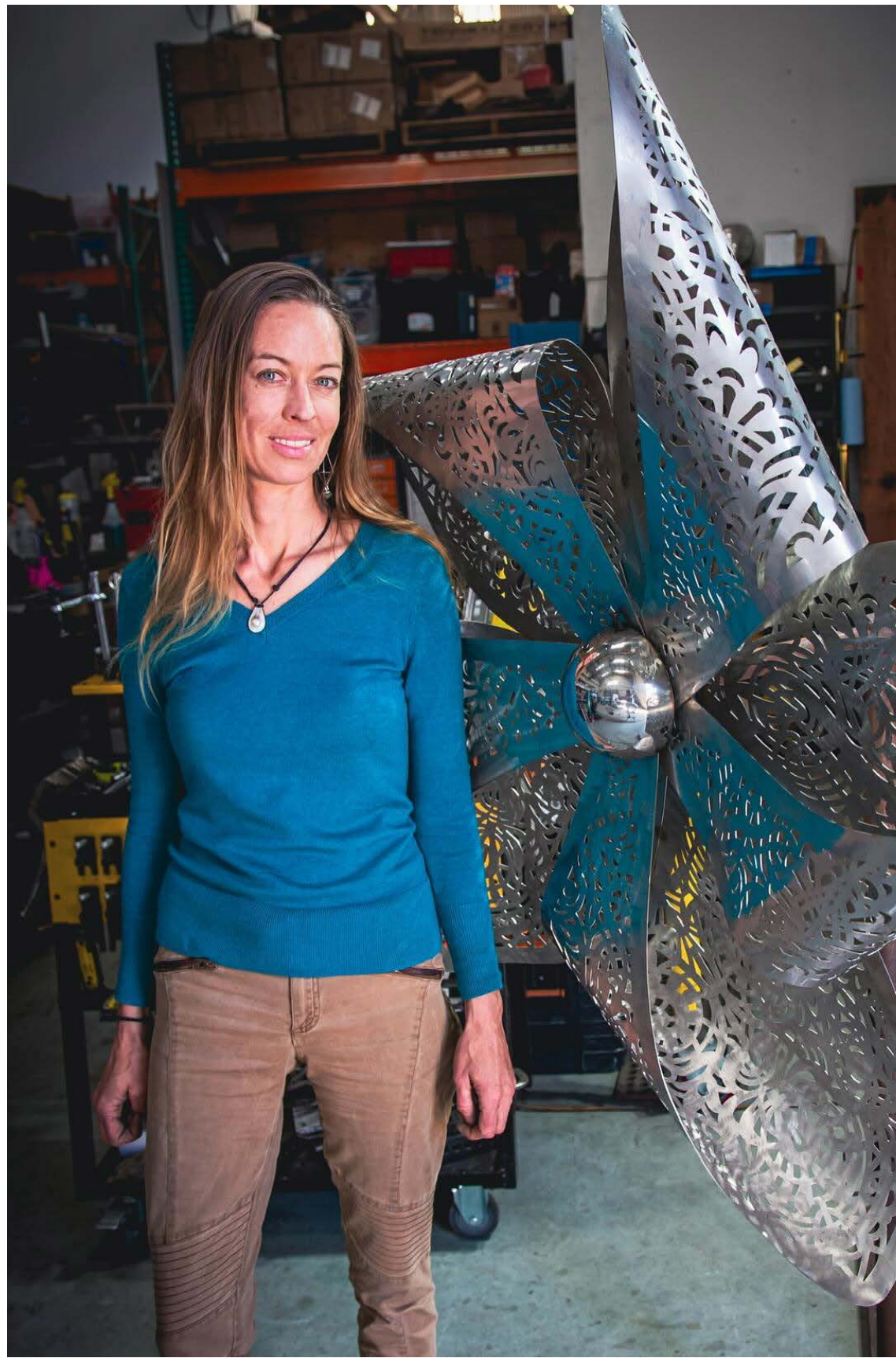
Naga is a 25-foot tall, 100-foot long sea serpent, consisting of five separate sections made of a galvanized steel frame, stainless steel mesh skin, and colored aluminum scales. Naga is designed to be placed outdoors in a public setting - meeting current codes for earthquakes and wind speeds, stamped by a registered structural engineer, and its aluminium scales will be painted with a non-toxic UV resistant outdoor grade paint.

Naga is part of a larger immersive art installation 'Naga and the Captainess' depicting a sea serpent visiting a half-sunken adventurers ship, the Aldrovanda, helmed by the Captainess. The art installation received an honoraria grant for this year's Burning Man event in Black Rock City, Nevada.



The Creators of Naga

The project is led by three female artists from the Bay Area: Cjay Roughgarden, an artist and architectural metal fabricator, Stephanie Shipman, an expert woodworker and arts educator, and Jacqueline Scott, an award-winning production designer and special FX artisan. The team met while volunteering on collaborative art projects of the East Bay based arts collective 'Five Ton Crane', most notably the Raygun Gothic Rocketship (displayed on the Embarcadero in 2010-2012) and The Capitol Theater, which was part of the No Spectator sexhibition at the Smithsonian, as well as the Oakland Museum of California.



Cjay Roughgarden



Stephanie Shipman



Jacquelyn Scott



Raygun Gothic Rocketship by the Five Ton Crane Artist Collective

Naga placement

Rainbow Falls pond is roughly 3 to 4 feet deep with a cement-lined bottom.

A final plan is being developed to place cement blocks in the pond to provide a solid foundation for the Naga sculpture.





Rainbow Falls

50.00 ft

100. ft

John F Kennedy Dr



Jax: LOVE BLOCKS companion



A photograph of a park with large wooden blocks and a metal sculpture. The blocks are made of weathered wood and are painted with various colors and patterns. One block in the foreground has a large yellow number '2' on it. In the background, there are several other blocks, some with green and red patterns. A person is standing near one of the blocks in the background. The sky is blue with some clouds, and there are trees in the background.

Jax is a new work from Misfit Toys, creators of the Remember When

Jax is a series of repeating sculptural elements (10 large-scale replicas of Jax) that complement the scale of the LOVE Blocks and continue to bring the childlike spirit of joy and exploration to the Golden Mile.

Earth-anchored into place

Jax will be solidly positioned into place via earth-anchors in the grass, and welds between touching pieces.

