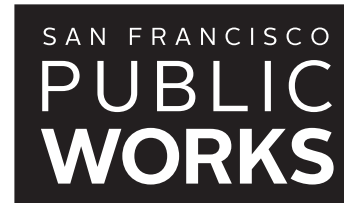




JAPANTOWN PEACE PLAZA

**CIVIC DESIGN REVIEW
MAY 20, 2024**



EXISTING PLAZA



PROJECT DESIGN GOALS

from Vision Plan, May 2019

Make Post Street visually open and inviting

while mitigating wind and providing seating and shade.

Provide a large permanent stage

and seating to accommodate 200-300 people.

Make Peace Plaza an inviting and playful space

for people of all ages to discover and explore.

Create an inviting visual expression along the Geary Boulevard edge

that draws people into the plaza and mitigates noise levels from Geary Boulevard.

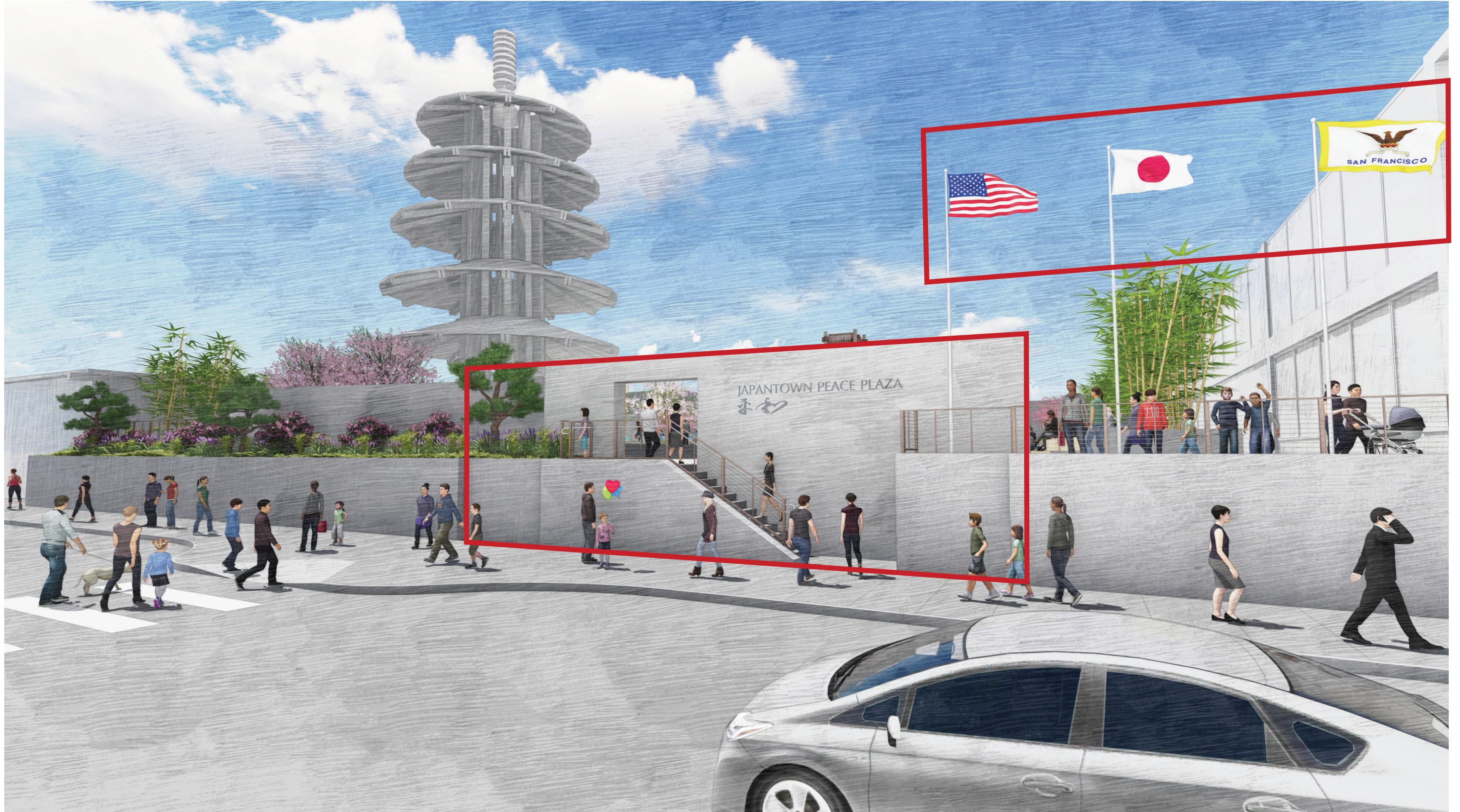
Incorporate significant cultural elements

included in the original design for Japantown Peace Plaza.

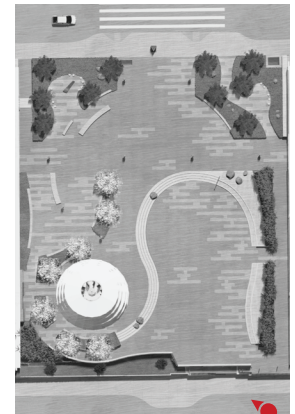
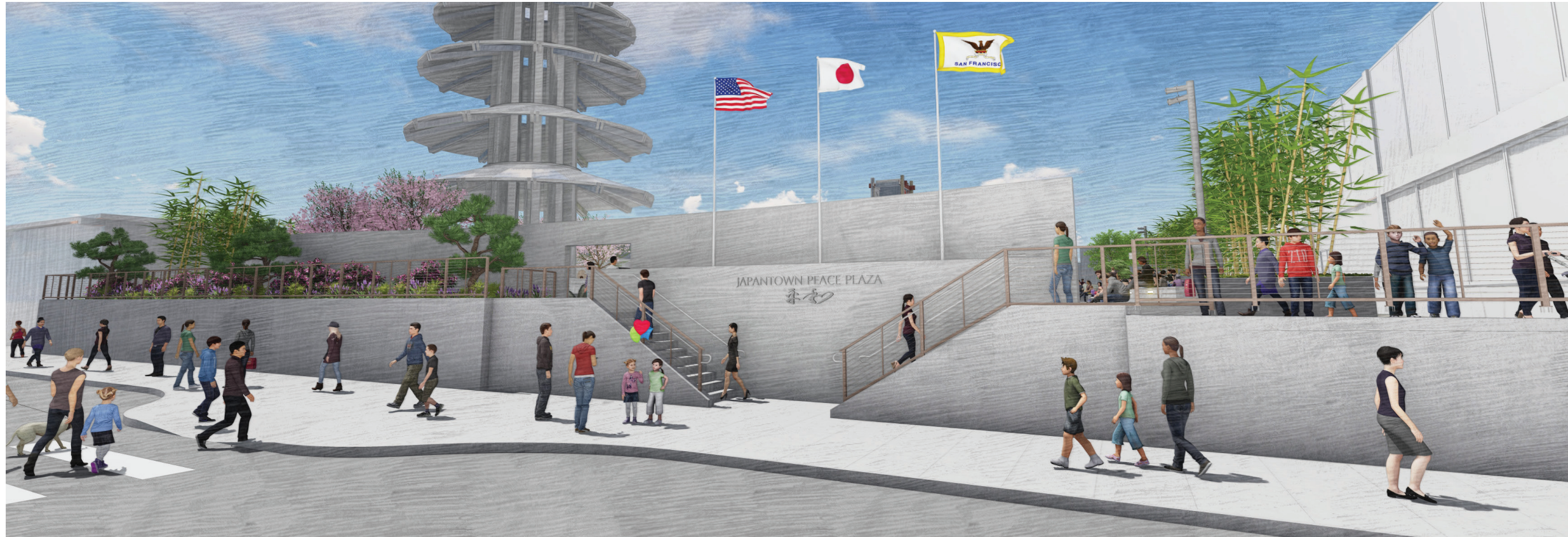
CONCEPT PLAN, *current*



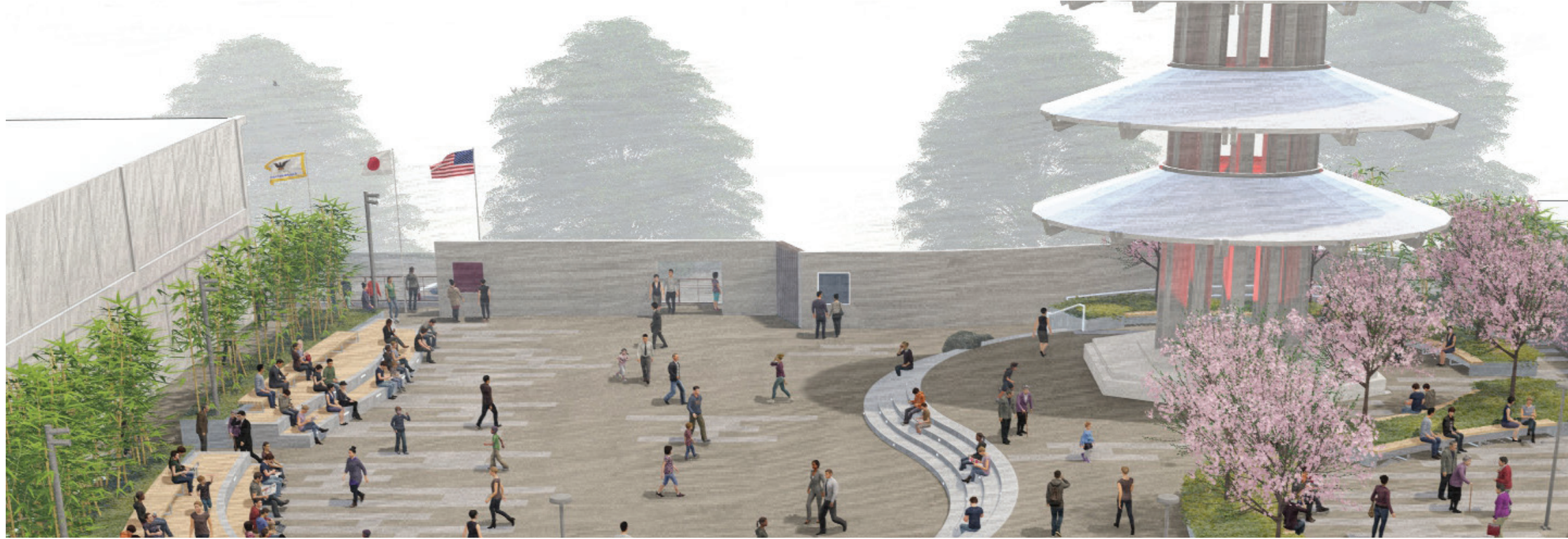
GEARY BLVD ENTRANCE, *current*



GEARY BLVD ENTRANCE, *current & proposed*



GEARY BLVD ENTRANCE, (plaza view) current & proposed

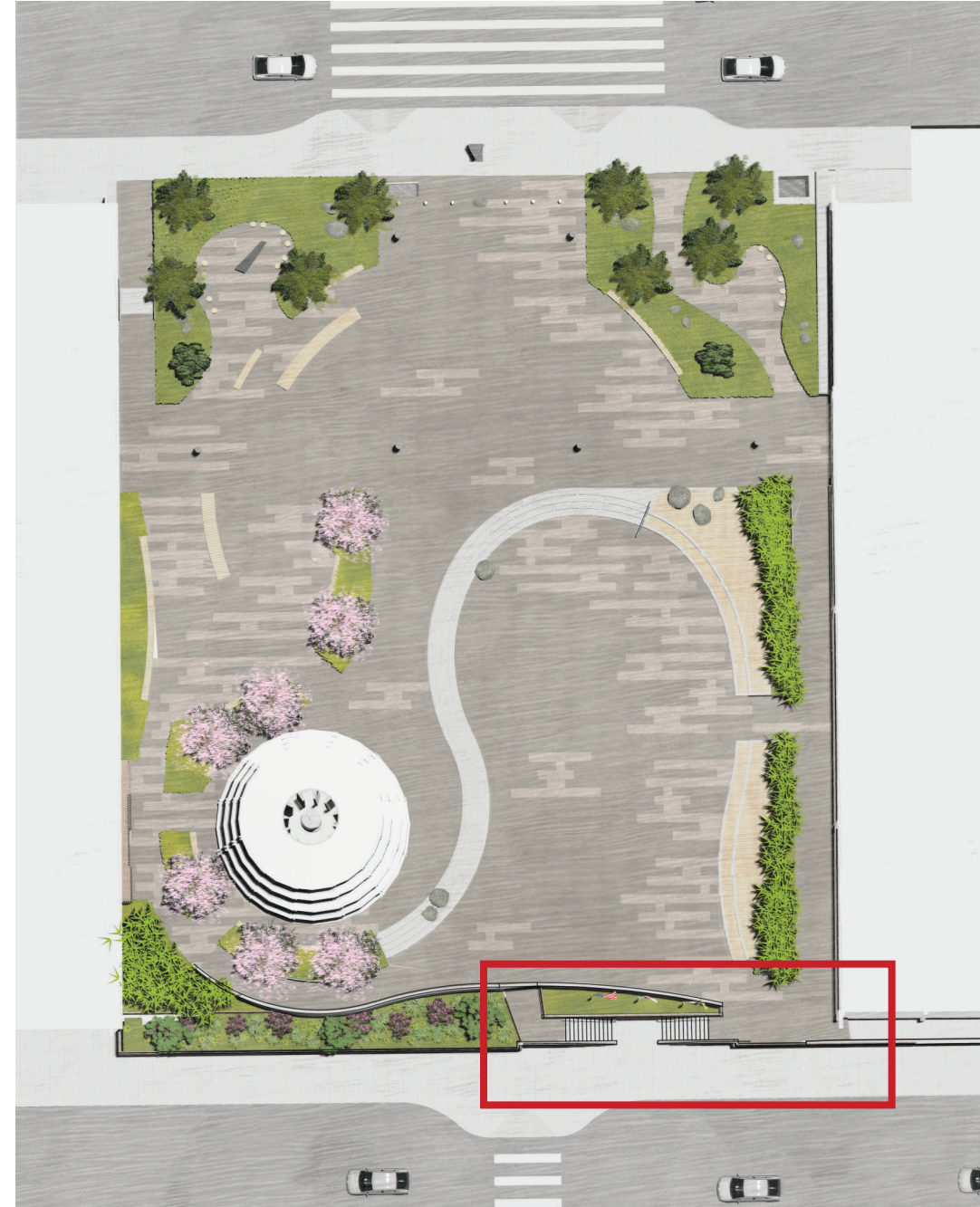


PEACE PLAZA SITE PLAN, *current & proposed*

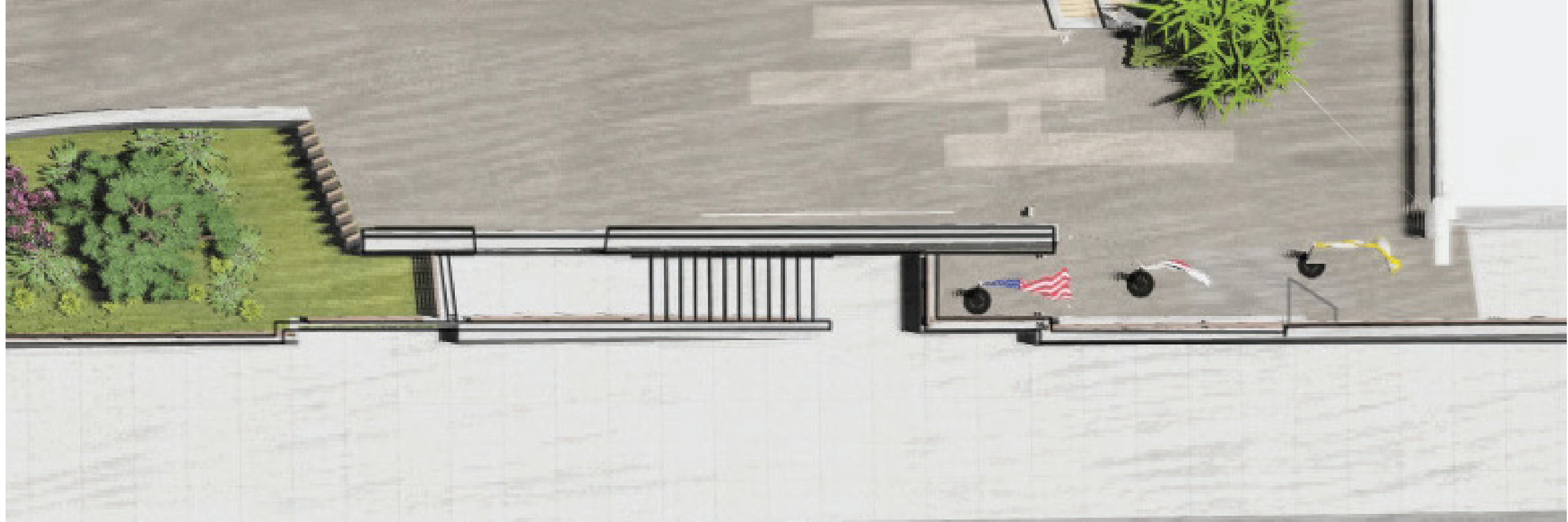
CURRENT PLAN



PROPOSED PLAN



PEACE PLAZA SITE PLAN, *current & proposed*



GEARY BLVD ENTRANCE, *proposed*



PLAZA DAYTIME AERIAL VIEW, *proposed*



PLAZA NIGHTTIME AERIAL VIEW, *proposed*

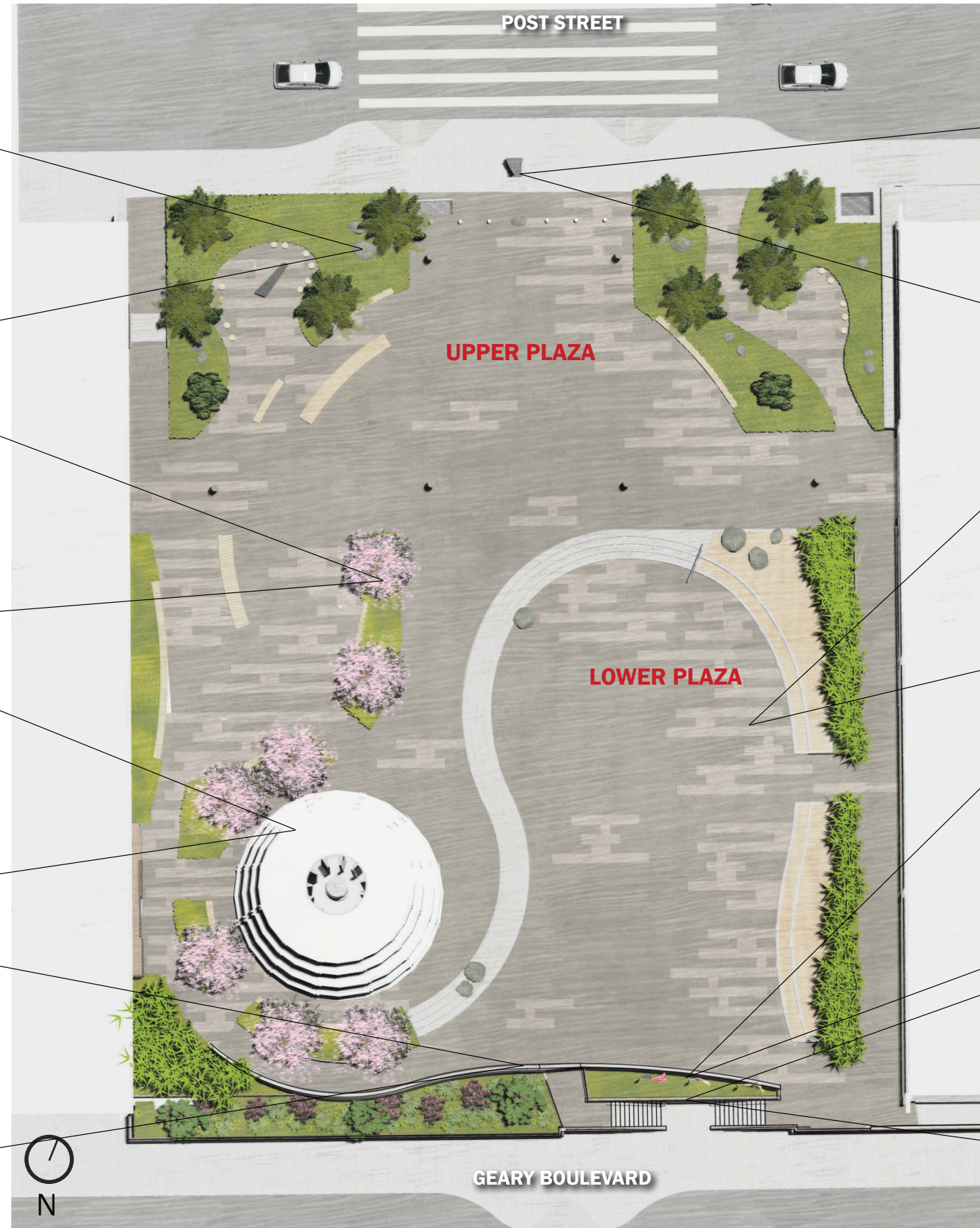


APPENDIX

GEARY BLVD ENTRANCE



CULTURAL ELEMENTS



BOULDERS
(relocated in plaza)



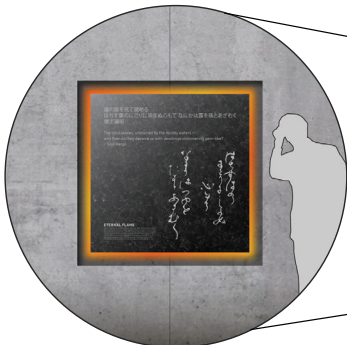
CHERRY TREES
(new trees embrace pagoda)



PEACE PAGODA
(structural upgrade)



ETERNAL FLAME
(reinterpreted w/ lights)



POST STREET

UPPER PLAZA

LOWER PLAZA

GEARY BOULEVARD



CULTURAL HERITAGE MONUMENT
(in current location)



WATER FEATURE
(expressed w/ lights)



FLAGPOLES
(relocated in plaza)



HEIWA CALLIGRAPHY
(recreated in Geary Blvd entrance)



GEARY BLVD ENTRANCE, *proposed*

