



**TRANSBAY BLOCK 3 PARK & ALLEY
ARTIST REVIEW PANEL ONE SUMMARY**

MEETING DATE

March 25, 2022

VOTING SELECTION PANELISTS

Mike Arcega, Artist

Jaimie Cruz, Commission Administrator, Commission on Community Investment and Infrastructure

Jennifer Dunlop Fletcher, Helen Hilton Raiser Curator of Architecture and Design, SFMOMA

Katina Johnson, Community Representative

Sanaz Mazinani, Artist

Monica Scott, Project Manager, San Francisco Recreation and Parks Department

PROCESS

Arts Commission staff presented the qualifications of 24 artists selected from Transbay Block 3 Park & Alley Qualification Panel. "Yes/No" majority votes based on the criteria of Artistic Merit, Relevant Skills and Experience, and Meeting the Project Goals yielded 9 artists to move to Round Two.

Round Two:

The Artist Selection Panel discussed the qualifications of the semi-finalists and scored each artist on the following criteria (1= low score):

- Artistic Merit (1-10)
- Relevant Skills and Experience (1-10)
- Assessed Ability to Meet the Project Goals (1-10)

Round Two voting yielded 4 finalists to recommend to the Arts Commission.

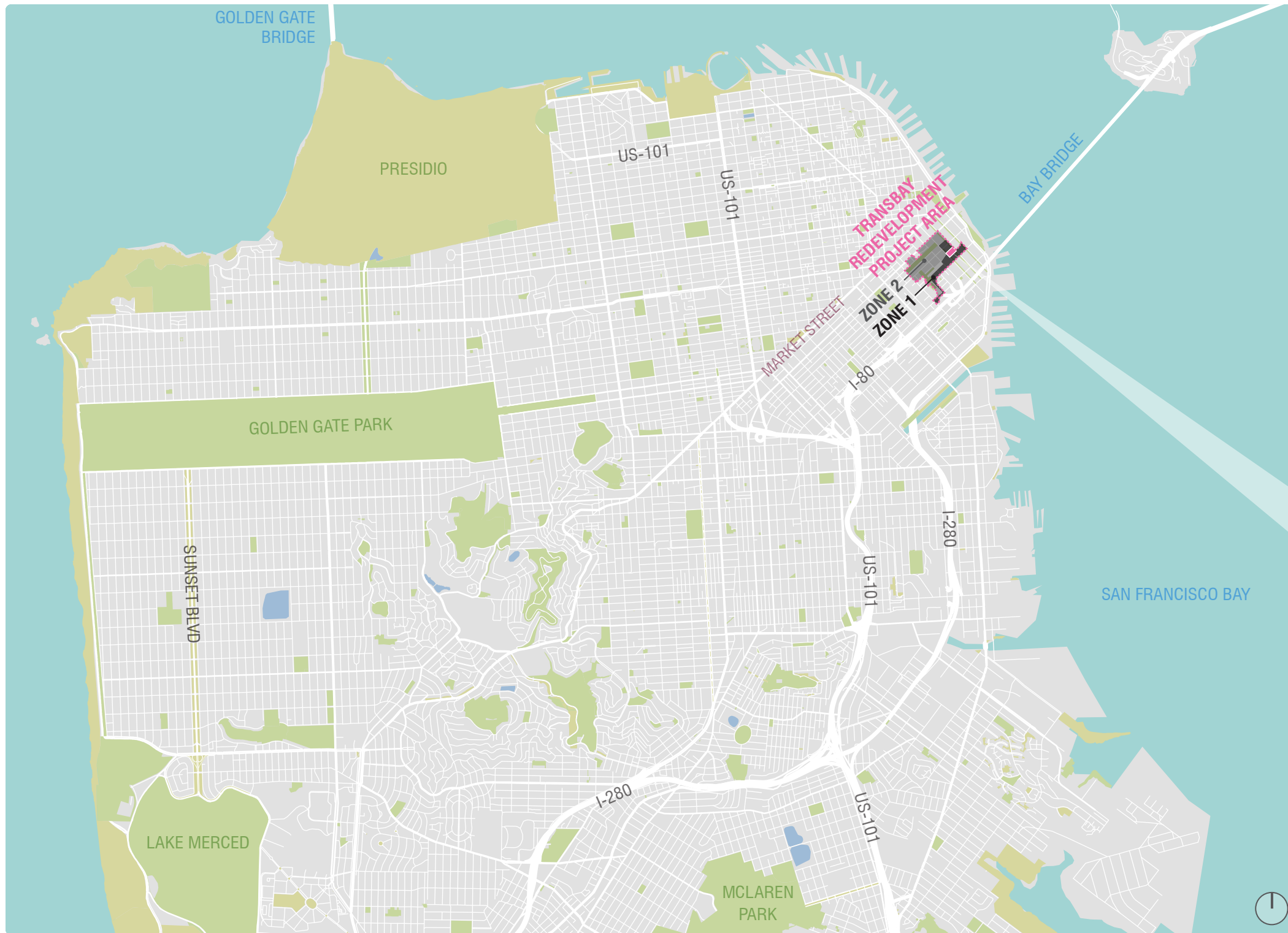
RESULTS

| | |
|-------------------|-----|
| Kota Ezawa | 181 |
| Terry Berlier | 163 |
| Mark Baugh-Sasaki | 152 |
| Cheryl Derricotte | 152 |

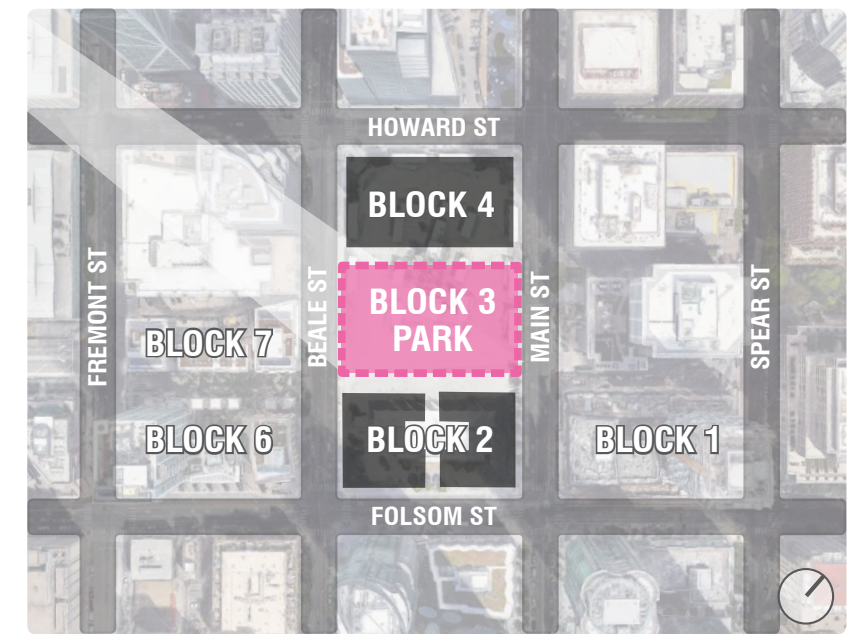
ARTS COMMISSION APPROVAL

Discussion and possible action: to approve the selected finalists, Kota Ezawa, Terry Berlier, Mark Baugh-Sasaki, and Cheryl Derricotte for the Transbay Block 3 Park & Alley Project, as recommended by the artist review panel.

FUTURE BLOCK 3 PARK LOCATION

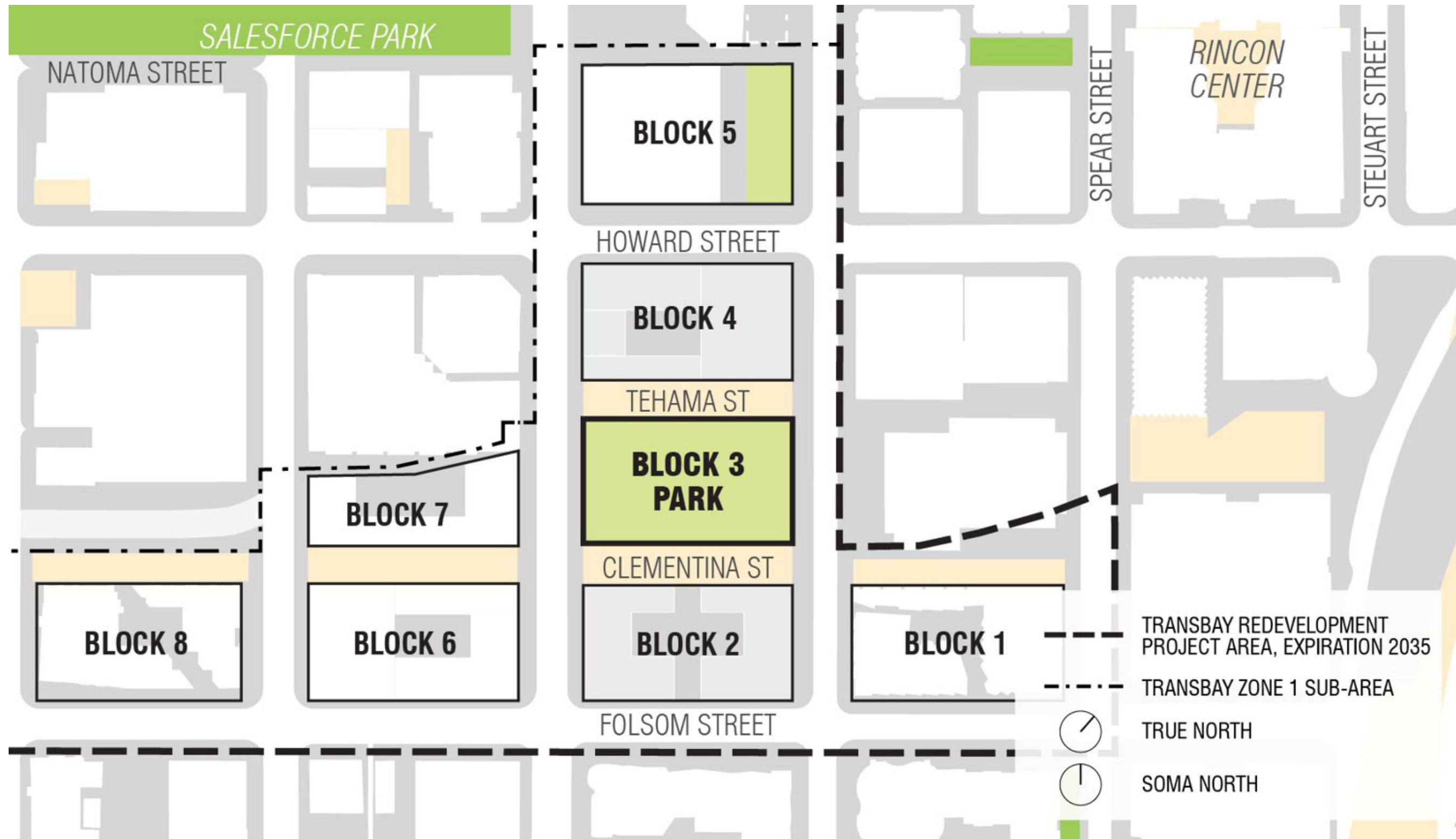


Map of San Francisco



Block 3 Park Located in Zone 1 - Area Enlargement

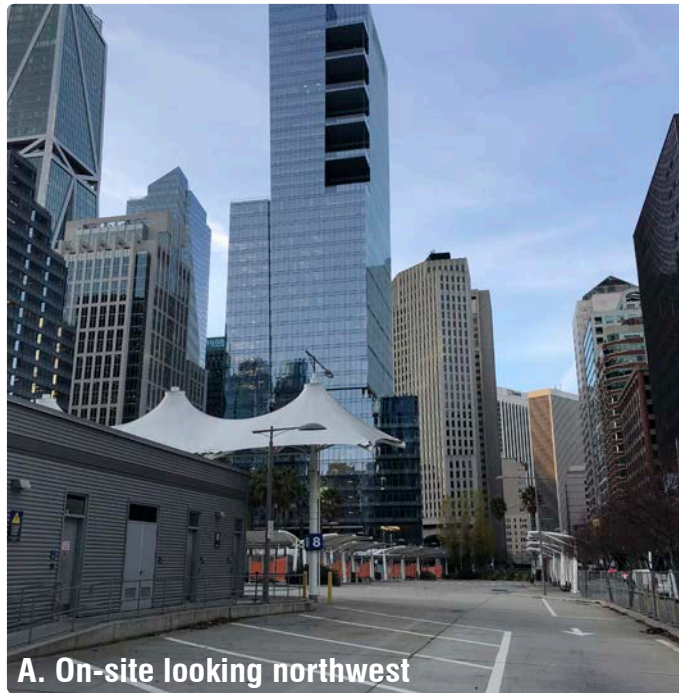
TRANSBAY PARK CONTEXT



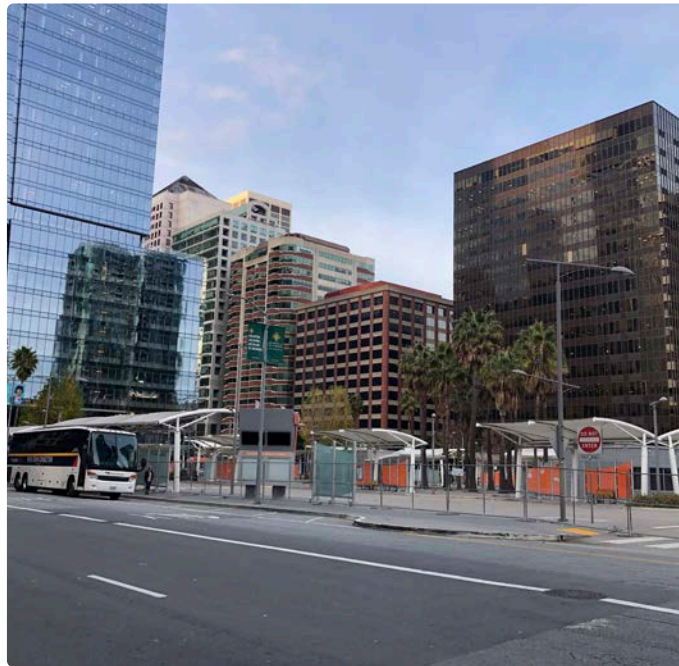
ADJACENT OPEN SPACE



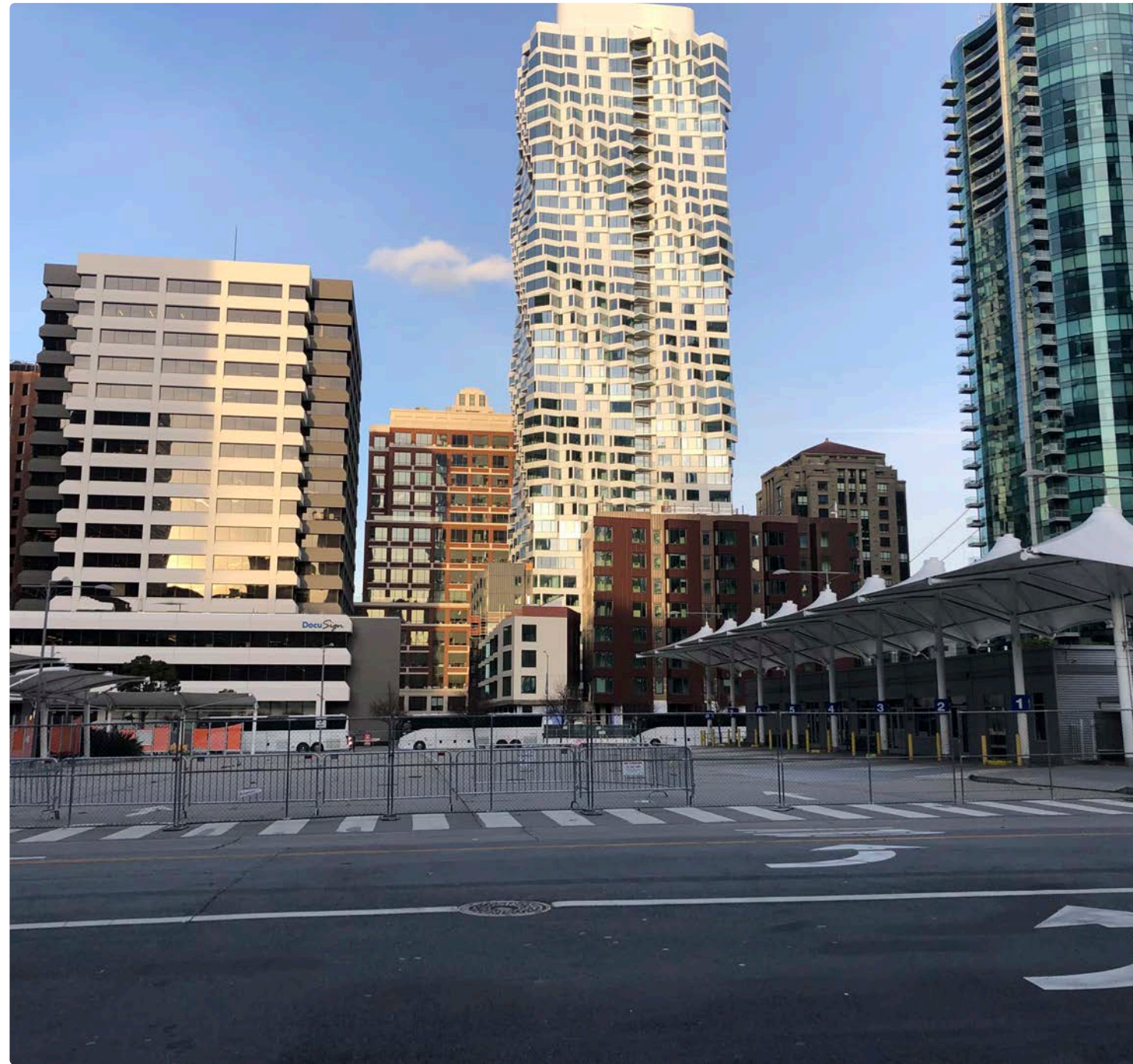
EXISTING SITE CONTEXT



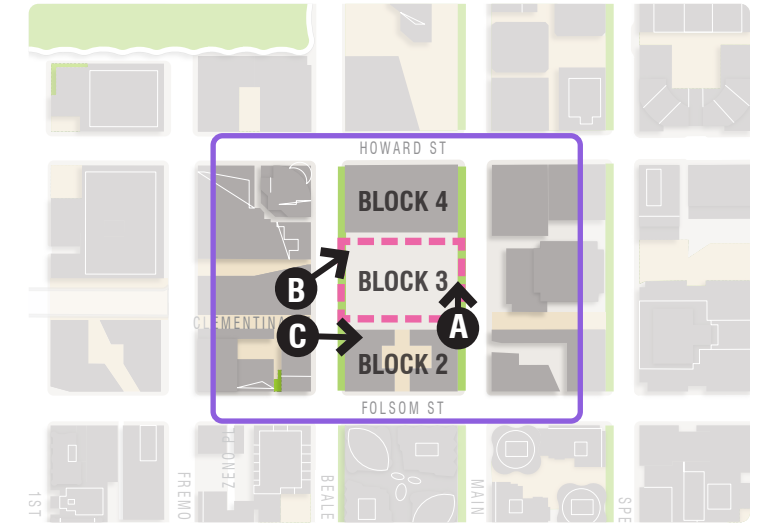
A. On-site looking northwest



B. Beale Street looking north





C. Beale Street looking northeast




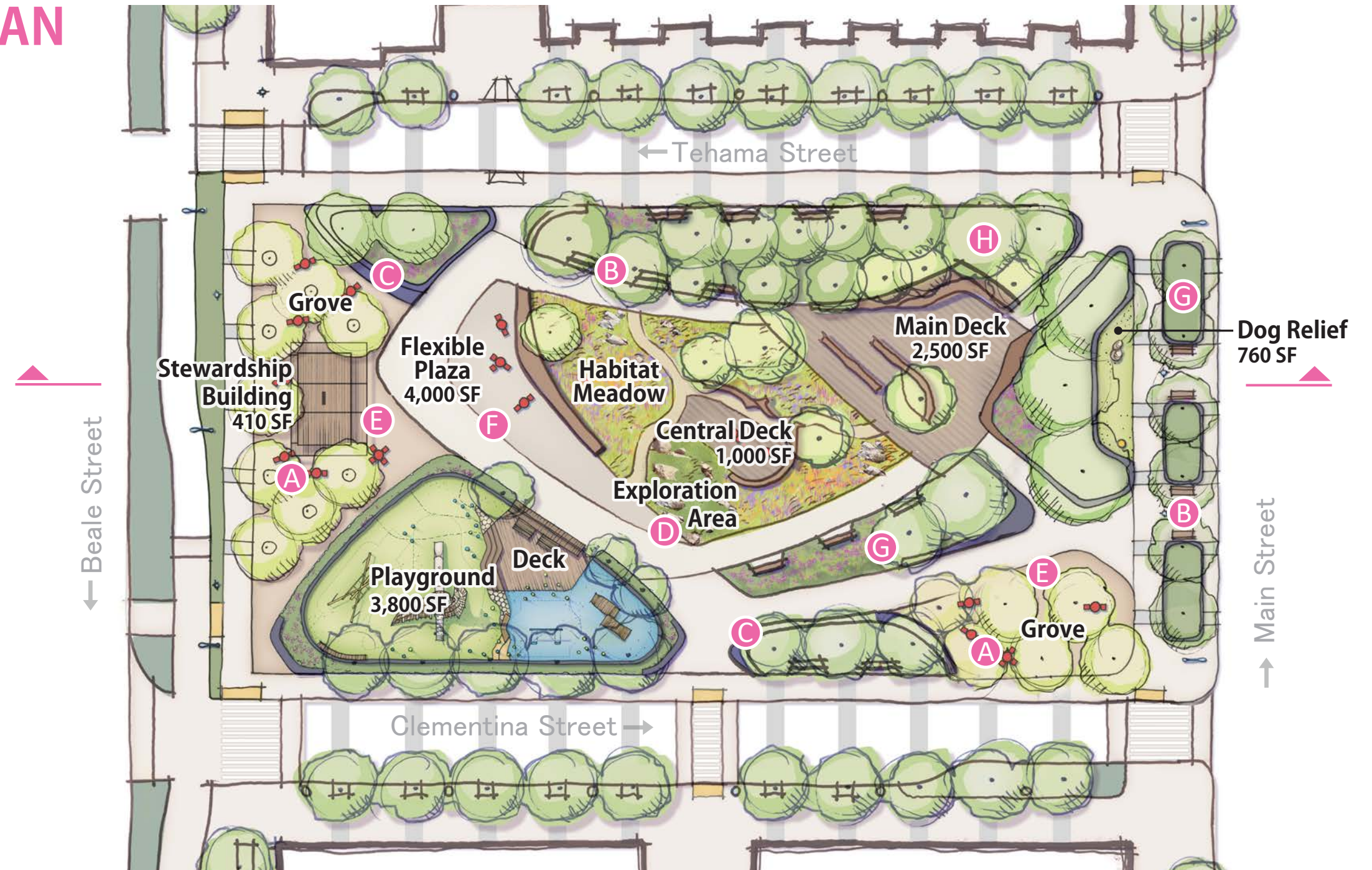
ILLUSTRATIVE SITE PLAN

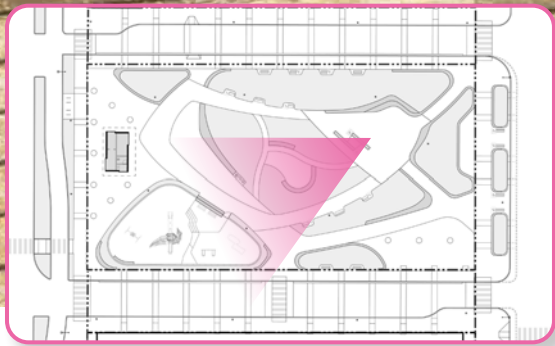
LEGEND

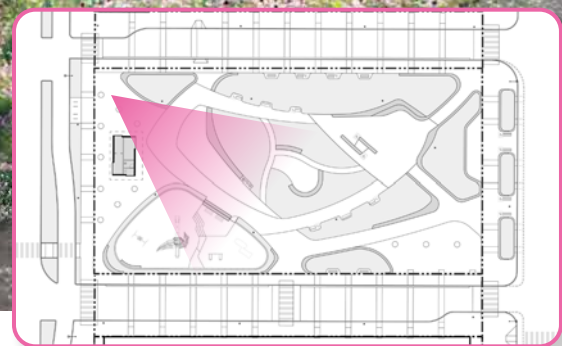
- A** Flexible Tables & Chairs
- B** Benches/Seating
- C** Seatwalls
- D** Boulders
- E** Permeable Paving
- F** Paving
- G** Plantings
- H** Trees

 True North
 SOMA North











SAN FRANCISCO
PUBLIC WORKS
Building Design & Construction

ILLUSTRATIVE RENDERING - BIRD'S EYE VIEW LOOKING NORTHEAST TOWARDS MAIN ST

BLOCK 3 PARK
Schematic Design | February 2022



Kota Ezawa



Terry Berlier



Mark Baugh-Sasaki



Cheryl Derricotte

Freedom's Threshold

To honor Harriet Tubman's rich legacy, I have designed a free standing sculpture in metal and glass. Drawing on the traditional architecture of Harriet Tubman's home, we see Harriet standing in the doorway, giving us the physical reminder not to be bound by convention and to step into freedom.

The sculpture is 12 ft tall, rising from a 4 ft footprint as specified in the RFP. The 8 ft image of Harriet Tubman is constructed out of 10" x 10" glass tiles. These dimensions were designed to give Harriet Tubman presence but still be relatable to human scale. The overall 12 ft height of the sculpture was designed to work in relationship to the surrounding new buildings with 16 ft doorways.

