

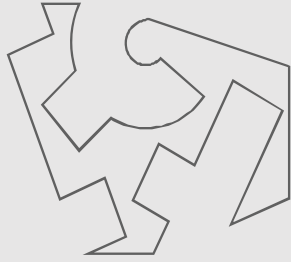
Artist Selection for Balboa Park Upper Yard





Around the Way
Aaron De La Cruz



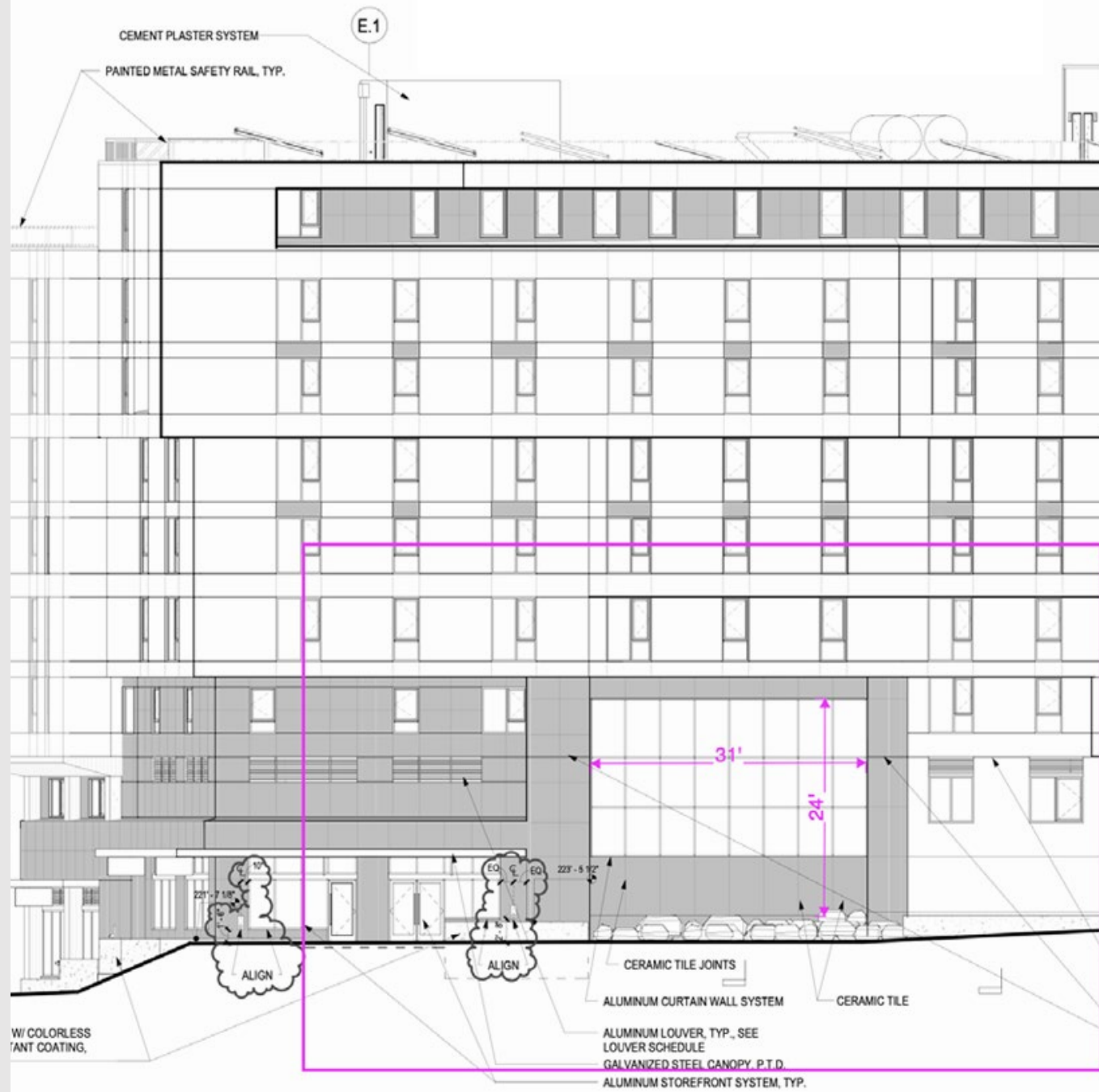


This work is created with one continuous line. Mission Housing mentioned that one of its primary goals is to provide a place where its residents can live ,work comfortably and not have to fear about being relocated; this would allow the possibility of having multiple generations housed under the same roof. The continuous one line is symbolic of this continuation.

During the process, I was conscious of three Intentions:

- *To create a unique work that utilized my visual language and symbolized my three kids.*
- *To meet with architect and have sculpture incorporate architectural angles and measurements of the building.*
- *To keep the residents of the building in mind through the design process. This piece has a lot of negative space allowing the audience from inside the building to see through easily and vice versa.*

Statement from Aaron De La Cruz



W/ COLORLESS PAINT COATING,

ALIGN

ALIGN

CERAMIC TILE JOINTS

CERAMIC TILE

ALUMINUM LOUVER, TYP., SEE LOUVER SCHEDULE

GALVANIZED STEEL CANOPY, P.T.D.

ALUMINUM STOREFRONT SYSTEM, TYP.

E.1

CEMENT PLASTER SYSTEM

PAINTED METAL SAFETY RAIL, TYP.

31'

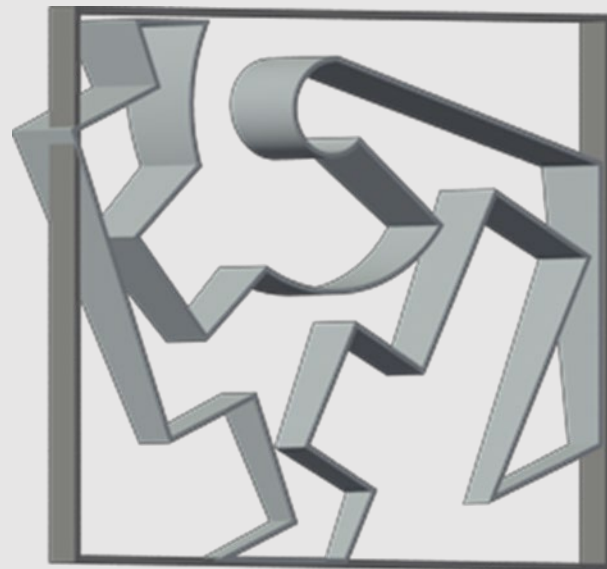
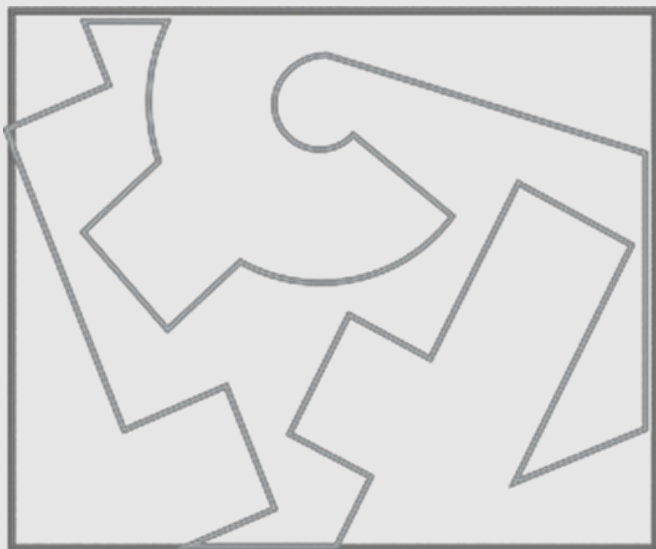
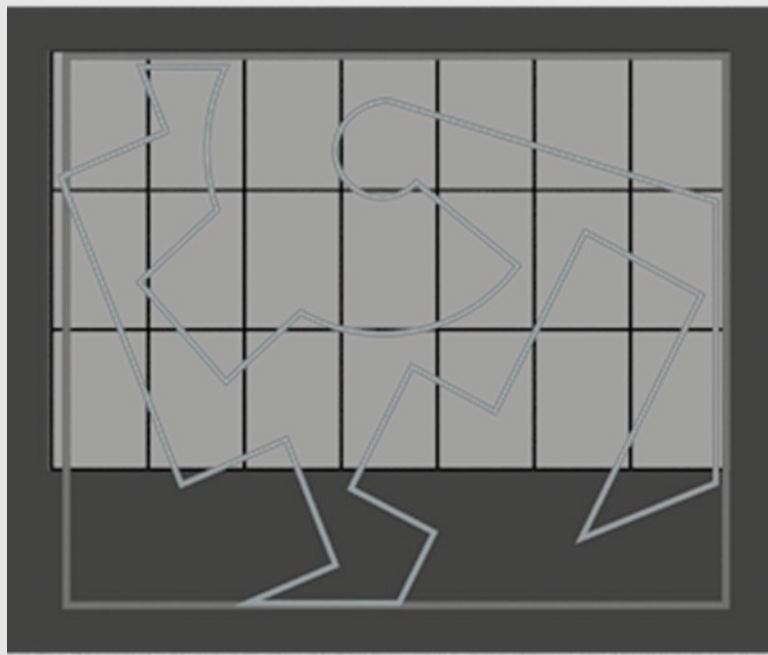
24'

ZZ3 - 5' 1 1/2"

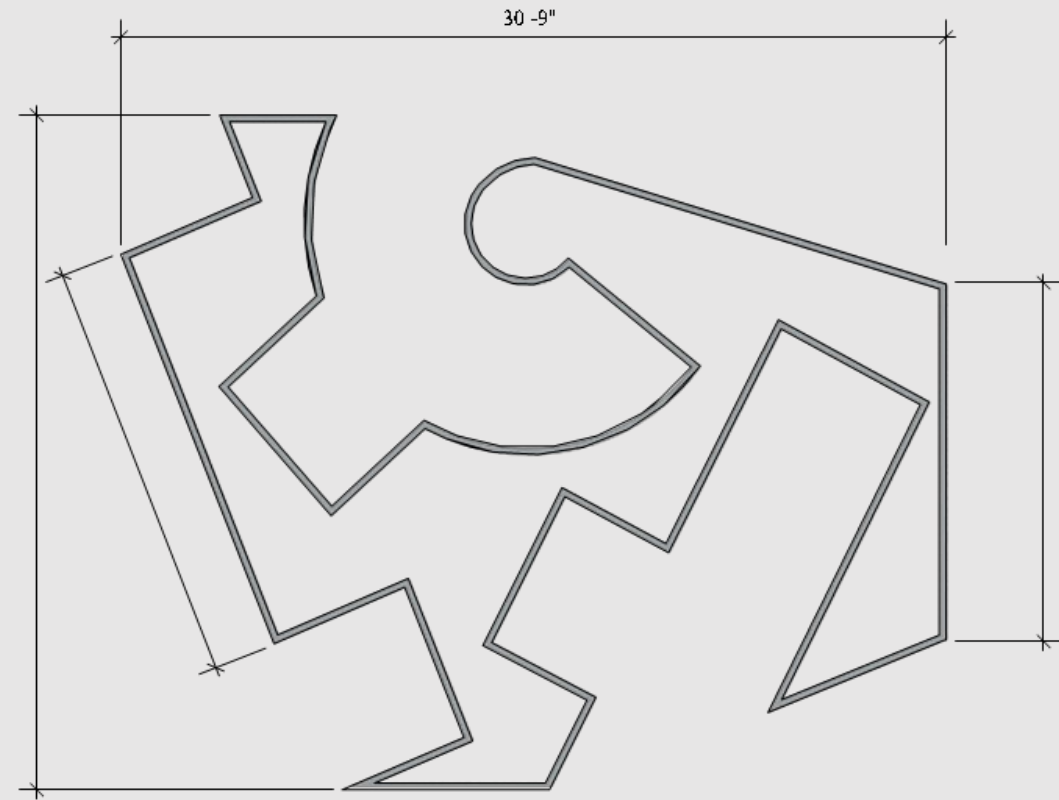
ZZ1 - 7' 1 1/2"

EQ

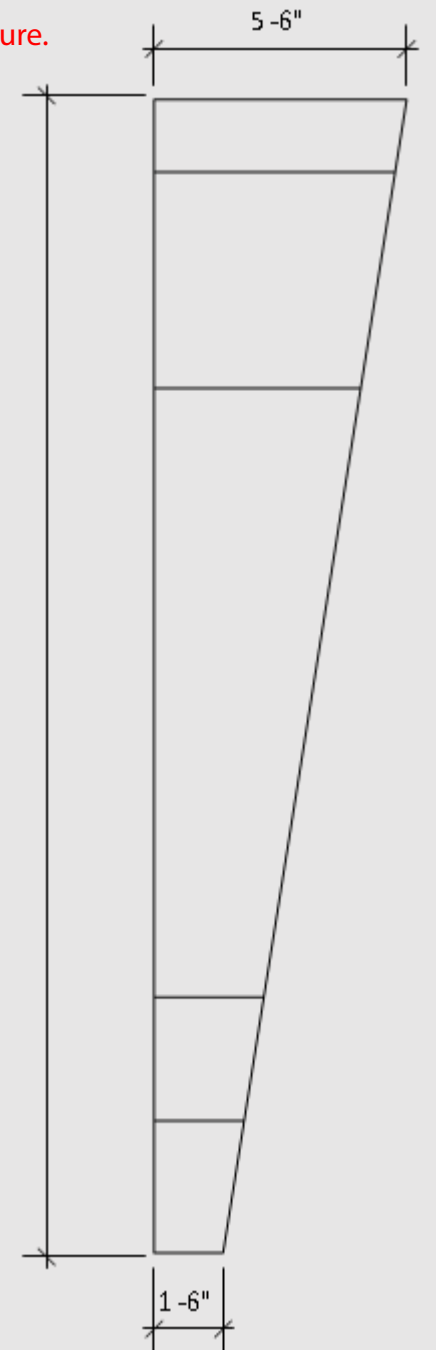
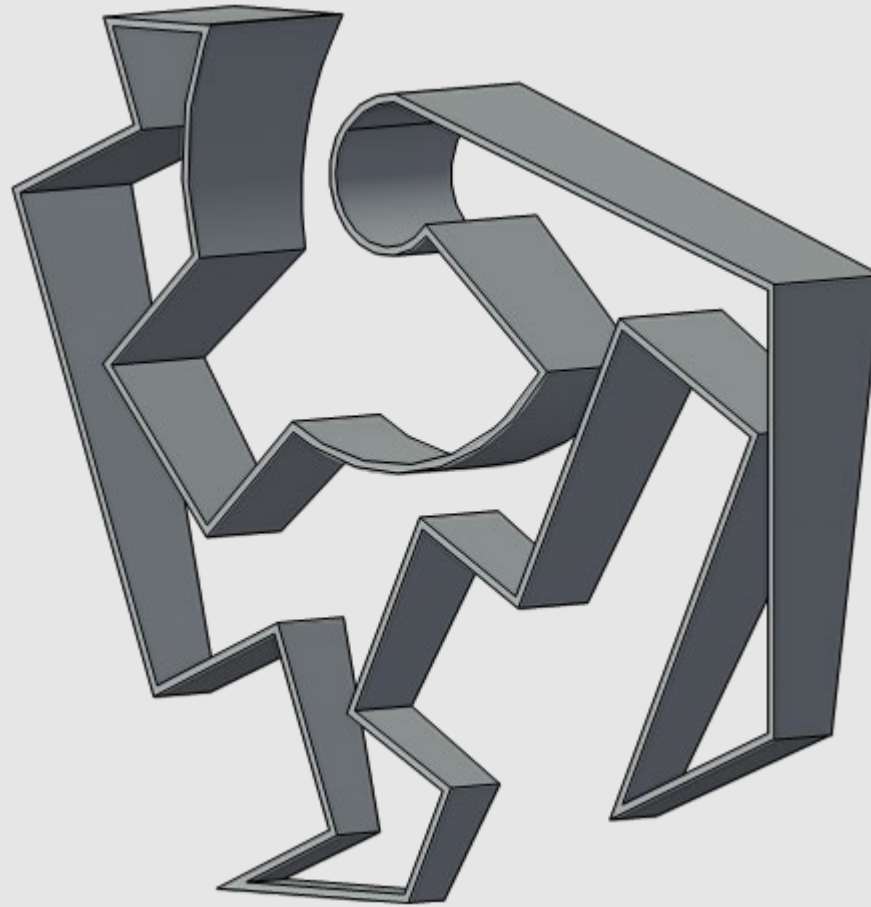
EQ



Angle is intentionally matching measurements of building's architecture.

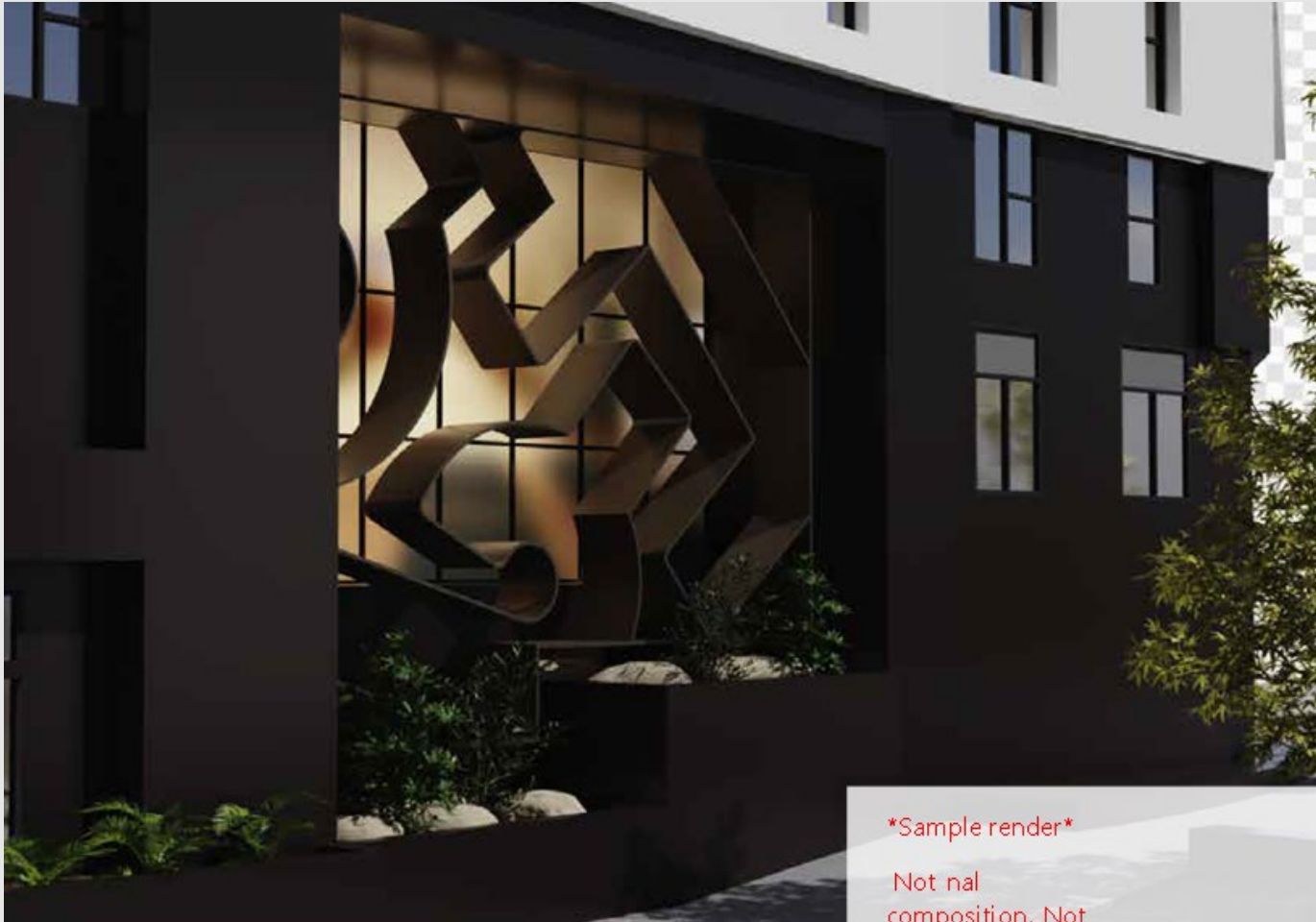


Sculpture Material: powder-coated Aluminum plate



Around the Way

Aaron De La Cruz



Sample render

Not final
composition. Not



3D SAMPLE. Final composition