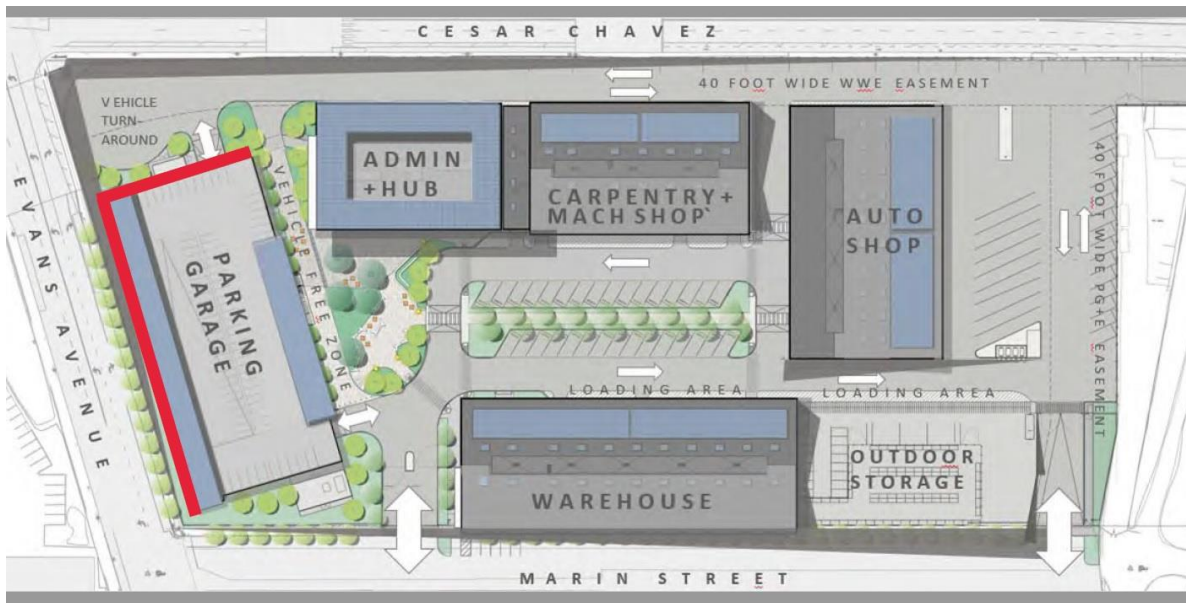


# sfac san francisco arts commission

## SFPUC'S CITY DISTRIBUTION DIVISION (CDD) AT 2000 MARIN ST. PUBLIC ART PROJECT PLAN



### BACKGROUND (CAPITAL IMPROVEMENT PROJECT OVERVIEW)

San Francisco Public Works is currently designing a new location for the San Francisco Public Utilities Commission's (SFPUC) City Distribution Division (CDD) at 2000 Marin Street, along the Islais Creek watershed. CDD manages the City's water distribution, including maintenance of 1250 miles of water mains, 12 reservoirs and 9 pump stations. The project will replace CDD's existing location at 1990 Newcomb Avenue. The campus will include administrative offices, an auto-shop, warehouse, meter shop, and a six-story, 244,000 square foot parking garage with 570 vehicle capacity. Community green space will be built outside the administrative office by parking for thirty-five large vehicles. The administrative offices will include space for engineers, business, operations, and retail management.

### ART OPPORTUNITY

In consultation with the SFPUC, the Arts Commission has identified the North and West façades of the parking garage as the optimal public art location. This is an opportunity for an artist to architecturally integrate an artwork into the two façades. The following are the approximate areas for an artwork: North façade at 43 feet high by 134 feet wide, and West façade at 43 feet high by 300 feet wide. The artwork will be highly visible along Cesar Chavez and Evans Avenue, and will constitute a monumental artwork for the surrounding Potrero Hill, Dogpatch and Islais Creek neighborhoods.

**PROJECT GOAL**

The goal of the project is to create a site-specific, landmark artwork that is inspired by water and reflects the activities of the SFPUC’s City Distribution Division including connecting all residences and business within the City and County with high quality, efficient and reliable water. The artwork shall also reflect the SFPUC’s mission to provide their customers with high quality, efficient and reliable water, power, and sewer services in a manner that is inclusive of environmental and community interests, and that sustains the resources entrusted to their care.

**ART ENRICHMENT and ARTWORK BUDGET**

Total Art Enrichment: \$3,420,000

Total Artwork Budget (artist design, fabrication, transportation and installation): \$1,859,800

An architectural credit of \$150 per square foot can be applied to the artwork in areas where the artwork replaces the existing metal cladding.

**ARTIST RECRUITMENT APPROACH AND ELIGIBILITY**

Arts Commission staff will issue an RFQ for this specific opportunity. Professional practicing artists residing in the United States are eligible to apply. Arts Commission staff may also select artists from other prequalified artist lists to be considered.

**ARTIST SELECTION PROCESS**

After the application deadline, applications will be presented to an Artist Qualification Panel consisting of one representative from the PUC, one arts professional and one SFAC staff member. The qualification panel will review and score the applications to identify the short list of qualified artists to be considered for the project opportunity.

The shortlisted artists will be presented to the CDD Headquarters at 2000 Marin Artist Review Panel consisting of one representative of the PUC, three arts professionals, one Arts Commissioner, and one stakeholder or community member. The Review Panel will identify three to four finalists who will be invited to develop conceptual site-specific proposals after attending an orientation session with the project team and key stakeholders. These finalists will be paid an honorarium of \$4,000 for development of a proposal.

The Review Panel will reconvene to consider the finalists’ proposals in an interview format and will select one artist for the project for recommendation to the Art Commission.

**COMMUNITY INVOLVEMENT**

- A community representative or stakeholder will serve on the Review Panel and will participate in the Artist Orientation
- The finalist’s proposals will be on display for public comment near the project site and on the SFAC website for two weeks prior to the final review panel meeting
- All review panels, Visual Arts Committee (VAC) and Commission meetings are open to the public.

**TIMELINE (Subject to change)**

Project Plan Approval (VAC)	January 19, 2022
RFQ Issued	January 24, 2022
RFQ Deadline	March 21, 2022
Qualification Panel	March 2022
First Project Artist Review Panel	May 2022
Artist Finalist Orientation	May 2022
Finalist Proposals Due	July 2022

Final Project Artist Review Panel  
VAC Approval  
Arts Commission Approval  
Artist Under Contract

August 2022  
August 17, 2022  
September 21, 2022  
January 2023

**FURTHER INFORMATION**

Contact Zoe Taleporos, Public Art Project Manager at (415)252-2243 or by email at [zoe.taleporos@sfgov.org](mailto:zoe.taleporos@sfgov.org).

**APPROVED BY SFPUC AND SFAC:**



1/18/2022

---

Ronnie Versher, Jr.  
*Director, Community Benefits, External Affairs*  
San Francisco Public Utilities Commission

Date

DocuSigned by:  
  
EB3B6364235E4AA

1/18/2022

---

Joanne Lee  
*Deputy Director of Programs*  
San Francisco Arts Commission

Date

# NEW CDD HEADQUARTERS AT 2000 MARIN STREET

CDR PHASE 1 PRESENTATION | 11.15.2021



Services of the San Francisco Public Utilities Commission



# WHO IS CDD...SFWD...WATER!

- Potable, recycled, groundwater, auxiliary
- 1250 miles of water mains
- 15 miles of pipe replaced per year
- 12 reservoirs
- 9 pump stations
- 176,000 water meters







## CAMPUS LOCATION + CONTEXT

NEW CDD HEADQUARTERS





**NEW CDD HEADQUARTERS**



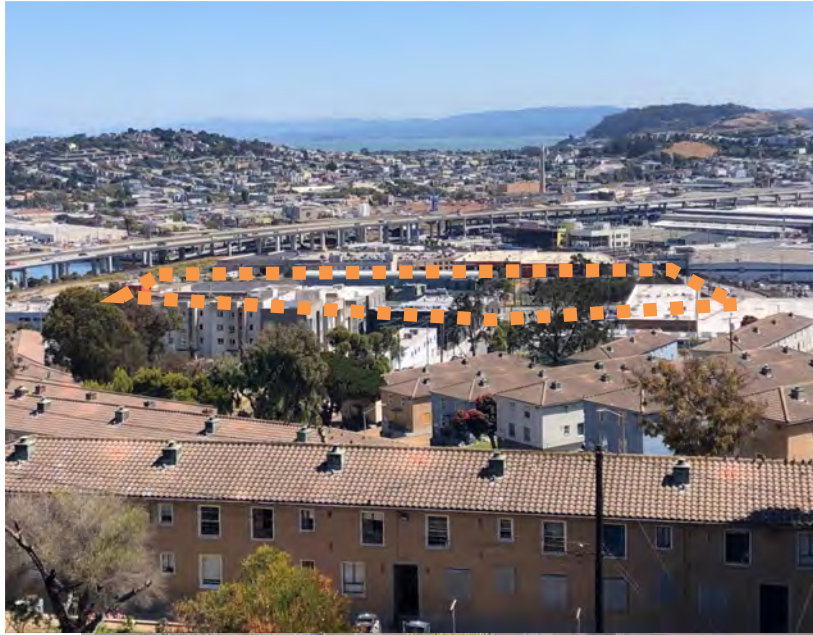
**VICINITY** | A SERIES OF MUNICIPAL OPERATIONS YARDS ALONG CESAR CHAVEZ





SITE | 2000 MARIN STREET

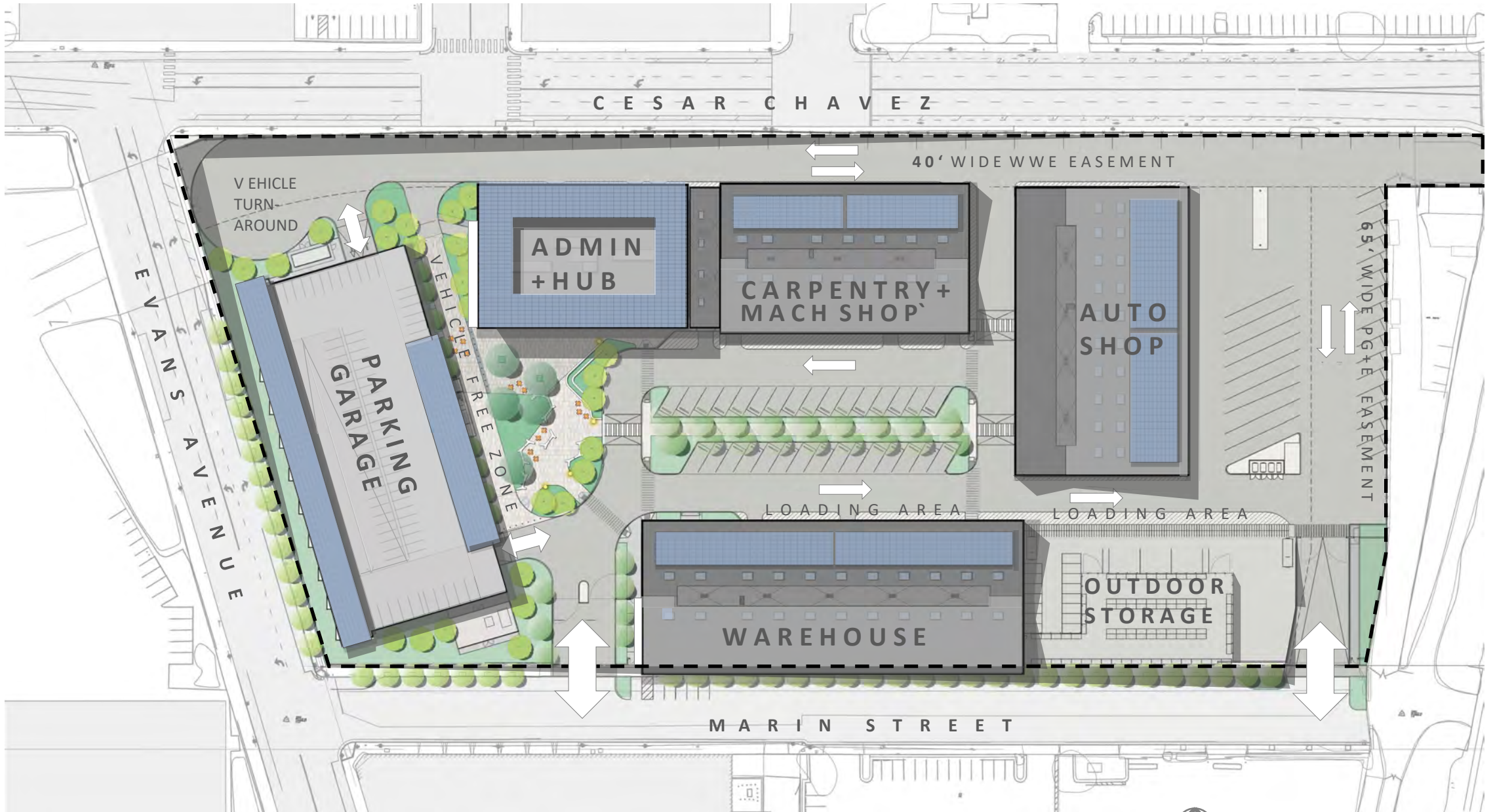




**VICINITY** | VIEW SOUTH FROM POTRERO HILL



**VICINITY** | VIEW WEST FROM 280







## CAMPUS DESIGN: VIEWS

NEW CDD HEADQUARTERS





**CAMPUS VIEW** | MAIN ENTRY GATE + METER SHOP PICK-UP



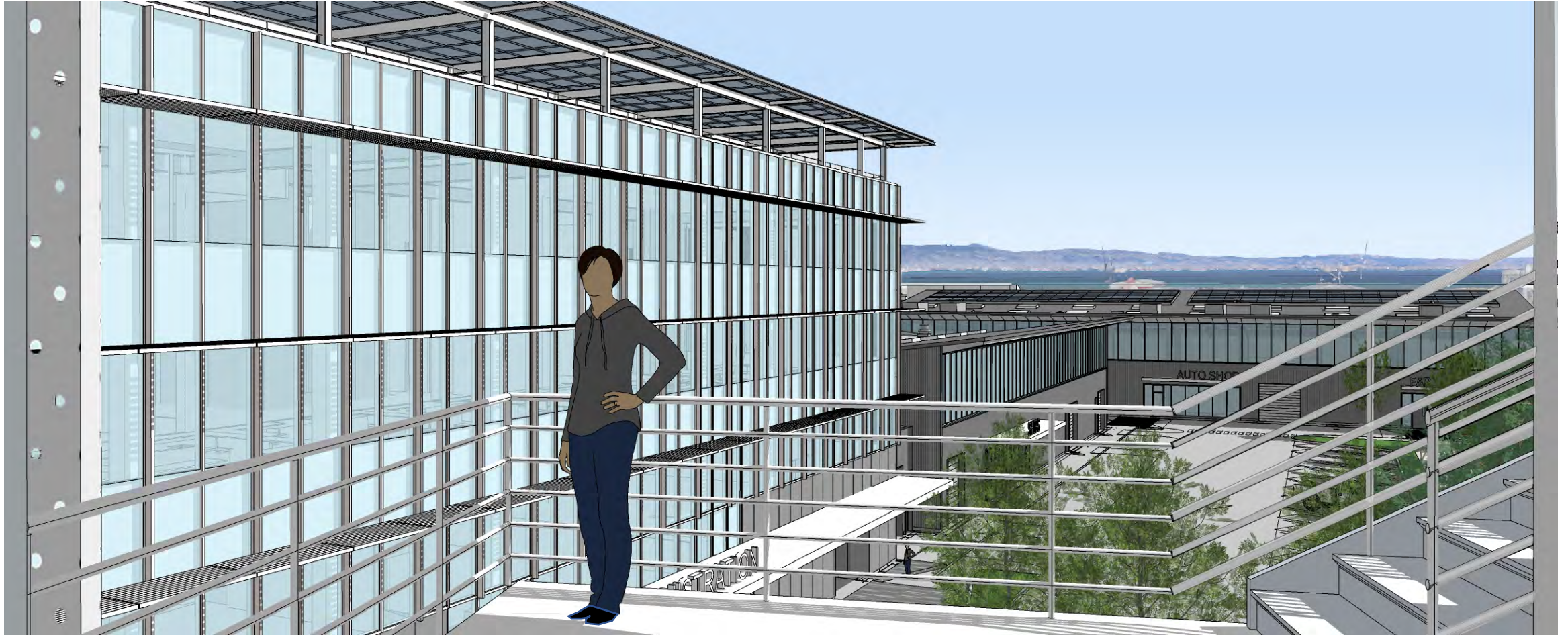




**CAMPUS VIEW** | ADMIN BUILDING ENTRY FROM CAMPUS QUAD







**CAMPUS VIEW** | MAIN STAIR AT PARKING GARAGE TOWARDS CAMPUS QUAD







CAMPUS VIEW | LOOKING NORTHWEST TOWARDS POTRERO HILL







**CAMPUS VIEW** | LOOKING SOUTHWEST ALONG CESAR CHAVEZ ST.







**CAMPUS VIEW** | LOOKING WEST AT CESAR CHAVEZ







**CAMPUS VIEW** | LOOKING EAST AT CESAR CHAVEZ/EVANS INTERSECTION



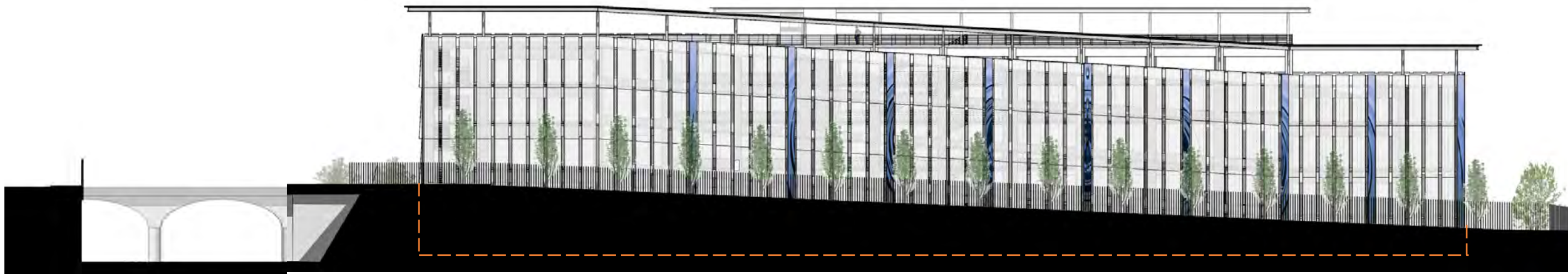




**PARKING STRUCTURE EAST ELEVATION | FACING CAMPUS**







**PARKING STRUCTURE WEST ELEVATION | FACING EVANS AVENUE**

