



SAN FRANCISCO PUBLIC UTILITIES COMMISSION

525 GOLDEN GATE AVE., SAN FRANCISCO, CA 94102 • TEL. (415) 554-1516



NOTICE OF PLANNED ELECTRICAL SERVICE INTERRUPTION TREASURE ISLAND COMMERCIAL PROPERTIES

The San Francisco Public Utilities Commission (SFPUC) High Voltage Crew needs to make necessary repairs to ensure reliable service to all customers. In order to perform this work safely, the crew needs to temporarily interrupt your electric service. The crew will do its best to minimize the length of the service interruption.

Date: Monday January 24, 2022

Time: 8:00 AM to 11:00 AM

AFFECTED SERVICE AREAS:

Treasure Island Gym – 749 9th Street
SFFD Station 48
ShipShape Community Center – 850 Avenue I
Building 570 – 950 Avenue M

If you are a Landlord with tenant(s) in the areas listed above and the SFPUC bill is in your name, **it is your responsibility** to notify the tenant(s) of the planned service interruption.

Unsafe weather conditions or any unforeseen emergency will require the High Voltage Crew to cancel the work at the last minute and the crew will be unable to notify you of this cancellation. However, you will receive notification of the rescheduled date and time.

SAFETY WARNING: Do not use generators under any circumstances without the knowledge of TIDA and the SFPUC. If you use a generator during the service interruption you must isolate your generator from the SFPUC system. Failure to do so will not only damage your generator but can cause serious injury to electric crew personnel. The SFPUC apologizes for this inconvenience and thanks you for your patience.

- **Computers and other electronic equipment** are particularly sensitive to power interruption. We highly recommend unplugging this equipment before the shutdown period.
 - **Security systems, clocks, irrigation timers,** and similar equipment will likely require resetting after the shutdown is completed.
 - For information about how to **safeguard perishable foods** in your refrigerator or freezer, visit the website www.foodsafety.gov/blog/power_outages.html
-



SAN FRANCISCO PUBLIC UTILITIES COMMISSION

525 GOLDEN GATE AVE., SAN FRANCISCO, CA 94102 • TEL. (415) 554-1516



NOTICE OF PLANNED ELECTRICAL SERVICE INTERRUPTION

The San Francisco Public Utilities Commission (SFPUC) High Voltage Crew needs to make necessary repairs to ensure reliable service to all customers. In order to perform this work safely, the crew needs to temporarily interrupt your electric service. The crew will do its best to minimize the length of the service interruption.

Date: Saturday January 15, 2022 and Sunday January 16, 2022

Time: 8:00 AM to 6:00 PM each day

AFFECTED SERVICE AREAS:

Treasure Island Administration Building, 1 Avenue of the Palms

If you are a Landlord with tenant(s) in the areas listed above and the SFPUC bill is in your name, **it is your responsibility** to notify the tenant(s) of the planned service interruption.

Unsafe weather conditions or any unforeseen emergency will require the High Voltage Crew to cancel the work at the last minute and the crew will be unable to notify you of this cancellation. However, you will receive notification of the rescheduled date and time.

SAFETY WARNING: Do not use generators under any circumstances without the knowledge of TIDA and the SFPUC. If you use a generator during the service interruption you must isolate your generator from the SFPUC system. Failure to do so will not only damage your generator but can cause serious injury to electric crew personnel. The SFPUC apologizes for this inconvenience and thanks you for your patience.

- **Computers and other electronic equipment** are particularly sensitive to power interruption. We highly recommend unplugging this equipment before the shutdown period.
- **Security systems, clocks, irrigation timers,** and similar equipment will likely require resetting after the shutdown is completed.
- For information about how to **safeguard perishable foods** in your refrigerator or freezer, visit the website www.foodsafety.gov/blog/power_outages.html





Treasure Island Community Development (TICD) STAGE 1 CONSTRUCTION ADVISORY Macalla Traffic Control with Flaggers

Treasure Island Community Development (TICD) and its contractor have scheduled a tree transplant and installation work at the newly constructed stormwater garden at the west end of Macalla Road on Monday, 1/31/2022. Traffic control with flaggers will be implemented to temporarily close a single lane on Macalla Road for this work. The community can expect the following:

Date/Time of Work:

- Work is on Monday, January 31, 2022.
- Work and associated traffic control hours are between 8am to 3pm.

Nature of Work and Impact

- Transport and installation of a tree to newly built stormwater garden
- One way traffic control with flaggers will be implemented
- Please plan accordingly for slight delays traveling through this area



TICD Construction Hotline (888) 469-0797

Please call the TICD Construction Hotline with any questions or concerns related to construction activities associated with the redevelopment of Treasure Island or Yerba Buena Island.

sftreasureisland.org/construction



PAUNAWA NG NAKAPLANONG PAGHINTO NG SERBISYO NG KURYENTE

Petsa: _____

Oras: _____

Ang mga apektadong Pasilidad ng Treasure Island ay kabilang ang:

Ang Mga Tauhan ng Mataas na Boltahe ng San Francisco Public Utilities Commission (SFPUC) ay dapat gumawa ng kailangang mga pagkukumpuni upang masiguro ang maaasahang serbisyo sa lahat ng parokyano. Upang ligtas na magawa ang trabahong ito, kailangan ng mga tauhan na pansamantalang ihinto ang iyong serbisyo ng kuryente. Gagawin ng mga tauhan ang makakaya upang paliitin hanggang maaari ang haba ng paghinto ng serbisyo.

Kung ikaw ay isang Nagpapaupa na may (mga) umuupa sa mga lugar na nakalista sa itaas at sinisingil ka ng SFPUC sa iyong pangalan, **responsibilidad mo** na bigyan ng paunawa ang (mga) umuupa ng tungkol sa nakaplanong paghinto ng serbisyo.

Ang di-ligtas na mga kondisyon ng panahon o anumang di-inaasahang emerhensiya ay magtutulak sa mga Tauhan ng Mataas na Boltahe na kanselahin ang trabaho sa huling minuto at hindi magagawa ng mga tauhan na bigyan ka ng paunawa ng pagkanselang ito. Gayunman, tatanggap ka ng paunawa ng binagong petsa at oras.

BABALANG PANGKALIGTASAN: Ang mga residente ay hindi dapat gumamit ng mga generator sa ilalim ng anumang pangyayari nang hindi nalalaman ng tagapagkaloob ng Pabahay. Kung ikaw ay gagamit ng generator sa panahon ng paghinto ng serbisyo dapat mong ihiwalay ang iyong generator mula sa sistema ng SFPUC. Ang kabiguang gawin ito ay hindi lamang makakapinsala sa iyong generator kundi maaari ring maging dahilan ng seryosong pinsala sa mga tauhan ng kuryente. Humihingi ng paumanhin ang SFPUC para sa abalang ito at nagpapasalamat sa iyong pang-unawa.

Kung ikaw ay umaasa sa mga kagamitang sumusuporta sa buhay, mangyaring isaalang-alang ang mga sumusunod:

HUMANAP NG PANGHALILING TIRAHAN SA ISANG LOKASYON NA HINDI APEKTADO NG PAGHINTO.

- **Ang mga computer at ibang elektronikong kagamitan** ay partikular na sensitibo sa paghinto ng serbisyo ng kuryente. Malakas na inirekomenda namin ang paghugot sa kagamitang ito mula sa saksakan bago ang panahon ng paghinto.
- **Ang mga sistemang panseguridad, orasan, pantakda ng oras ng patubig,** at katulad na kagamitan ay malamang na mangailangan ng muling pagbabalik sa kaayusan pagkakumpleto ng paghinto.

Para sa impormasyon tungkol sa kung paano dapat **pangalagaan ang mga nasisirang pagkain** sa iyong refrigerator o freezer, bisitahin ang website www.foodsafety.gov/blog/power_outages.html

NOTICE OF PLANNED ELECTRIC SERVICE INTERRUPTION

Date: _____

Time: _____

Affected Areas of Treasure Island Facilities include:

The San Francisco Public Utilities Commission (SFPUC) High Voltage Crew needs to make necessary repairs to ensure reliable service to all customers. In order to perform this work safely, the crew needs to temporarily interrupt your electric service. The crew will do its best to minimize the length of the service interruption.

If you are a Landlord with tenant(s) in the areas listed above and the SFPUC bill is in your name, **it is your responsibility** to notify the tenant(s) of the planned service interruption.

Unsafe weather conditions or any unforeseen emergency will require the High Voltage Crew to cancel the work at the last minute and the crew will be unable to notify you of this cancellation. However, you will receive notification of the rescheduled date and time.

SAFETY WARNING: Residents should not use generators under any circumstances without the knowledge of the Housing provider. If you use a generator during the service interruption you must isolate your generator from the SFPUC system. Failure to do so will not only damage your generator but can cause serious injury to electric crew personnel. The SFPUC apologizes for this inconvenience and thanks you for your patience.

If you rely **on life support devices**, please consider the following:

FIND ALTERNATE LODGING AT A LOCATION NOT AFFECTED BY THE INTERRUPTION.

- **Computers and other electronic equipment** are particularly sensitive to power interruption. We highly recommend unplugging this equipment before the shutdown period.
- **Security systems, clocks, irrigation timers,** and similar equipment will likely require resetting after the shutdown is completed.

For information about how to **safeguard perishable foods** in your refrigerator or freezer, visit the website www.foodsafety.gov/blog/power_outages.html



AVISO DE INTERRUPCIÓN PROGRAMADA DE SERVICIO ELÉCTRICO

Fecha: _____

Hora: _____

Las Áreas Afectadas de la Instalación de Treasure Island incluyen:

El Equipo de Obreros de Alto Voltaje de la Comisión de Utilidades Públicas de San Francisco (SFPUC por sus siglas en inglés) necesita hacer reparaciones para asegurar un servicio fiable para todos sus clientes. Para realizar estas obras de manera segura, el equipo necesita interrumpir temporalmente su servicio eléctrico. El equipo se esforzará para mantener la interrupción de servicio a un mínimo.

Si usted es un propietario con inquilino(s) dentro de las áreas listadas anteriormente y la factura de la SFPUC está a su nombre, **es su responsabilidad** notificar a cada inquilino de esta interrupción programada de servicio.

Condiciones climáticas o cualquier otra emergencia imprevista requerirá que el equipo de obreros de Alto Voltaje cancele las obras a último momento y el equipo no será capaz de avisarle de dicha cancelación. Sin embargo usted recibirá una notificación sobre la fecha y horario de la reprogramación de las obras.

AVISO DE SEGURIDAD: Los residentes no deberán usar generadores bajo ninguna circunstancia sin el conocimiento del propietario. Si usted usa un generador durante la interrupción de servicio, debe aislar su generador del sistema de la SFPUC. De no hacerlo, no solo dañará su generador si no que puede causar heridas graves al personal del equipo eléctrico. La SFPUC le pide disculpas por estas molestias y le agradece de antemano por su paciencia.

Si usted depende de algún **dispositivo de soporte de vida**, por favor considere lo siguiente:

ENTRE VIVIENDA ALTERNATIVA EN UNA UBICACIÓN NO AFECTADA POR LA INTERRUPCIÓN.

- **Las computadoras y otro equipo electrónico son particularmente sensibles a la interrupción de energía.** Le recomendamos sumamente que desconecte este equipo antes del periodo de interrupción.
- **Los sistemas de Seguridad, relojes, cronómetros de riego, y otros equipos similares seguramente requerirán reprogramación después que termine la interrupción.**

Para información sobre como **resguardar alimentos perecederos** dentro de su refrigerador o congelador, visite la página Web www.foodsafety.gov/blog/power_outages.html

暫停計劃供電服務通知

日期: _____

時間: _____

金銀島設施受影響地區包括：

三藩市水利局（SFPUC）高壓機組人員需要做必要的維修，以確保為所有顧客提供可靠的服務。為安全執行此項工作，機組人員需要暫時停止你的電力服務。工作人員會儘力將暫停此服務的時間減至最少。

如你是房東，有住客住在上述的地區而三藩市水利局的帳單是以你的名字發出，**你有責任**通知住客計劃暫停此服務之事宜。

如天氣情況不安全或有任何未能預料到之緊急情況，高壓機組人員可能在最後一分鐘取消此工作，而他們將無法通知你此取消行動。但是，你將會收到重新安排時間和日期的通知。

安全警告：在任何情況下未經屋主知曉前，住客不應使用發電器。如果你在服務暫停的時間使用發電器，你必須將你的發電器和三藩市水利局的系統分開。如沒有這樣做你不只可損壞你的發電器同時可導致電力組工作人員嚴重受傷。三藩市水利局對此造成之不便謹以致歉，並感謝你的耐心。

如果你**依賴維生儀器**，請考慮以下方法：

在暫停供電之前在另一個地點找住宿

- **電腦和其他電子儀器**對電力中斷特別敏感。我們極力建議你在關閉期間將這些設備的電擊除出。
- **保安系統，鐘，灌溉計時器**和類似的設備可能需要在暫停供電結束之後重新設定。

有關如何保持你冰箱或冷藏庫易腐食物的安全，請上網：www.foodsafety.gov/blog/power_outages.html



PAUNAWA NG NAKAPLANONG PAGHINTO NG SERBISYO NG KURYENTE

Petsa: _____

Oras: _____

Ang mga apektadong Pasilidad ng Treasure Island ay kabilang ang:

Ang Mga Tauhan ng Mataas na Boltahe ng San Francisco Public Utilities Commission (SFPUC) ay dapat gumawa ng kailangang mga pagkukumpuni upang masiguro ang maaasahang serbisyo sa lahat ng parokyano. Upang ligtas na magawa ang trabahong ito, kailangan ng mga tauhan na pansamantalang ihinto ang iyong serbisyo ng kuryente. Gagawin ng mga tauhan ang makakaya upang paliitin hanggang maaari ang haba ng paghinto ng serbisyo.

Kung ikaw ay isang Nagpapaupa na may (mga) umuupa sa mga lugar na nakalista sa itaas at sinisingil ka ng SFPUC sa iyong pangalan, **responsibilidad mo** na bigyan ng paunawa ang (mga) umuupa ng tungkol sa nakaplanong paghinto ng serbisyo.

Ang di-ligtas na mga kondisyon ng panahon o anumang di-inaasahang emerhensiya ay magtutulak sa mga Tauhan ng Mataas na Boltahe na kanselahin ang trabaho sa huling minuto at hindi magagawa ng mga tauhan na bigyan ka ng paunawa ng pagkanselang ito. Gayunman, tatanggap ka ng paunawa ng binagong petsa at oras.

BABALANG PANGKALIGTASAN: Ang mga residente ay hindi dapat gumamit ng mga generator sa ilalim ng anumang pangyayari nang hindi nalalaman ng tagapagkaloob ng Pabahay. Kung ikaw ay gagamit ng generator sa panahon ng paghinto ng serbisyo dapat mong ihiwalay ang iyong generator mula sa sistema ng SFPUC. Ang kabiguang gawin ito ay hindi lamang makakapinsala sa iyong generator kundi maaari ring maging dahilan ng seryosong pinsala sa mga tauhan ng kuryente. Humihingi ng paumanhin ang SFPUC para sa abalang ito at nagpapasalamat sa iyong pang-unawa.

Kung ikaw ay umaasa sa mga kagamitang sumusuporta sa buhay, mangyaring isaalang-alang ang mga sumusunod:

HUMANAP NG PANGHALILING TIRAHAN SA ISANG LOKASYON NA HINDI APEKTADO NG PAGHINTO.

- **Ang mga computer at ibang elektronikong kagamitan** ay partikular na sensitibo sa paghinto ng serbisyo ng kuryente. Malakas na inirekomenda namin ang paghugot sa kagamitang ito mula sa saksakan bago ang panahon ng paghinto.
- **Ang mga sistemang panseguridad, orasan, pantakda ng oras ng patubig,** at katulad na kagamitan ay malamang na mangailangan ng muling pagbabalik sa kaayusan pagkakumpleto ng paghinto.

Para sa impormasyon tungkol sa kung paano dapat **pangalagaan ang mga nasisirang pagkain** sa iyong refrigerator o freezer, bisitahin ang website www.foodsafety.gov/blog/power_outages.html

NOTICE OF PLANNED ELECTRIC SERVICE INTERRUPTION

Date: _____

Time: _____

Affected Areas of Treasure Island Facilities include:

The San Francisco Public Utilities Commission (SFPUC) High Voltage Crew needs to make necessary repairs to ensure reliable service to all customers. In order to perform this work safely, the crew needs to temporarily interrupt your electric service. The crew will do its best to minimize the length of the service interruption.

If you are a Landlord with tenant(s) in the areas listed above and the SFPUC bill is in your name, **it is your responsibility** to notify the tenant(s) of the planned service interruption.

Unsafe weather conditions or any unforeseen emergency will require the High Voltage Crew to cancel the work at the last minute and the crew will be unable to notify you of this cancellation. However, you will receive notification of the rescheduled date and time.

SAFETY WARNING: Residents should not use generators under any circumstances without the knowledge of the Housing provider. If you use a generator during the service interruption you must isolate your generator from the SFPUC system. Failure to do so will not only damage your generator but can cause serious injury to electric crew personnel. The SFPUC apologizes for this inconvenience and thanks you for your patience.

If you rely **on life support devices**, please consider the following:

FIND ALTERNATE LODGING AT A LOCATION NOT AFFECTED BY THE INTERRUPTION.

- **Computers and other electronic equipment** are particularly sensitive to power interruption. We highly recommend unplugging this equipment before the shutdown period.
- **Security systems, clocks, irrigation timers,** and similar equipment will likely require resetting after the shutdown is completed.

For information about how to **safeguard perishable foods** in your refrigerator or freezer, visit the website www.foodsafety.gov/blog/power_outages.html



AVISO DE INTERRUPCIÓN PROGRAMADA DE SERVICIO ELÉCTRICO

Fecha: _____

Hora: _____

Las Áreas Afectadas de la Instalación de Treasure Island incluyen:

El Equipo de Obreros de Alto Voltaje de la Comisión de Utilidades Públicas de San Francisco (SFPUC por sus siglas en inglés) necesita hacer reparaciones para asegurar un servicio fiable para todos sus clientes. Para realizar estas obras de manera segura, el equipo necesita interrumpir temporalmente su servicio eléctrico. El equipo se esforzará para mantener la interrupción de servicio a un mínimo.

Si usted es un propietario con inquilino(s) dentro de las áreas listadas anteriormente y la factura de la SFPUC está a su nombre, **es su responsabilidad** notificar a cada inquilino de esta interrupción programada de servicio.

Condiciones climáticas o cualquier otra emergencia imprevista requerirá que el equipo de obreros de Alto Voltaje cancele las obras a último momento y el equipo no será capaz de avisarle de dicha cancelación. Sin embargo usted recibirá una notificación sobre la fecha y horario de la reprogramación de las obras.

AVISO DE SEGURIDAD: Los residentes no deberán usar generadores bajo ninguna circunstancia sin el conocimiento del propietario. Si usted usa un generador durante la interrupción de servicio, debe aislar su generador del sistema de la SFPUC. De no hacerlo, no solo dañará su generador si no que puede causar heridas graves al personal del equipo eléctrico. La SFPUC le pide disculpas por estas molestias y le agradece de antemano por su paciencia.

Si usted depende de algún **dispositivo de soporte de vida**, por favor considere lo siguiente:

ENTRE VIVIENDA ALTERNATIVA EN UNA UBICACIÓN NO AFECTADA POR LA INTERRUPCIÓN.

- **Las computadoras y otro equipo electrónico son particularmente sensibles a la interrupción de energía.** Le recomendamos sumamente que desconecte este equipo antes del periodo de interrupción.
- **Los sistemas de Seguridad, relojes, cronómetros de riego, y otros equipos similares seguramente requerirán reprogramación después que termine la interrupción.**

Para información sobre como **resguardar alimentos perecederos** dentro de su refrigerador o congelador, visite la página Web www.foodsafety.gov/blog/power_outages.html

暫停計劃供電服務通知

日期: _____

時間: _____

金銀島設施受影響地區包括：

三藩市水利局（SFPUC）高壓機組人員需要做必要的維修，以確保為所有顧客提供可靠的服務。為安全執行此項工作，機組人員需要暫時停止你的電力服務。工作人員會儘力將暫停此服務的時間減至最少。

如你是房東，有住客住在上述的地區而三藩市水利局的帳單是以你的名字發出，**你有責任**通知住客計劃暫停此服務之事宜。

如天氣情況不安全或有任何未能預料到之緊急情況，高壓機組人員可能在最後一分鐘取消此工作，而他們將無法通知你此取消行動。但是，你將會收到重新安排時間和日期的通知。

安全警告：在任何情況下未經屋主知曉前，住客不應使用發電器。如果你在服務暫停的時間使用發電器，你必須將你的發電器和三藩市水利局的系統分開。如沒有這樣做你不只可損壞你的發電器同時可導致電力組工作人員嚴重受傷。三藩市水利局對此造成之不便謹以致歉，並感謝你的耐心。

如果你**依賴維生儀器**，請考慮以下方法：

在暫停供電之前在另一個地點找住宿

- **電腦和其他電子儀器**對電力中斷特別敏感。我們極力建議你在關閉期間將這些設備的電擊除出。
- **保安系統，鐘，灌溉計時器**和類似的設備可能需要在暫停供電結束之後重新設定。

有關如何保持你冰箱或冷藏庫易腐食物的安全，請上網：www.foodsafety.gov/blog/power_outages.html

The Connector

Volume 6 . January 2022



For more information visit:
Onetreasureisland.org
 Or call:
(415) 274-0311

IMPORTANT UPCOMING DATES:

- Mon Jan 31 - Deadline to register to vote for the Feb 2022 election
- Thurs Feb 3 - VITA Tax Site opens for appointments
- Tues Feb 15 - Consolidated Special Municipal Election
- Mon March 7 - Emergency Prep Workshop #1
- Mon March 14 - Emergency Prep Workshop #2
- Mon March 21 - Emergency Prep Workshop #3
- Mon March 28 - Emergency Prep Workshop #4
- Sat April 16 - Oral History Project Launch
- Sat April 30 - Spring Fling/ Health Fair



To learn more about the Tues Feb 15 election, scan here:



TAX SEASON IS HERE!

It's that time of year again! One Treasure Island is happy to host a VITA Tax Site once again for all Treasure Island residents at the Ship Shape Community Center.

Tax Site will be open every Thursday from February 3rd - April 14th from 10 am – 8 pm, BY APPOINTMENT ONLY.

Tax Site will also be open for Super Saturdays: 10 am to 1 pm, NO APPOINTMENT NEEDED

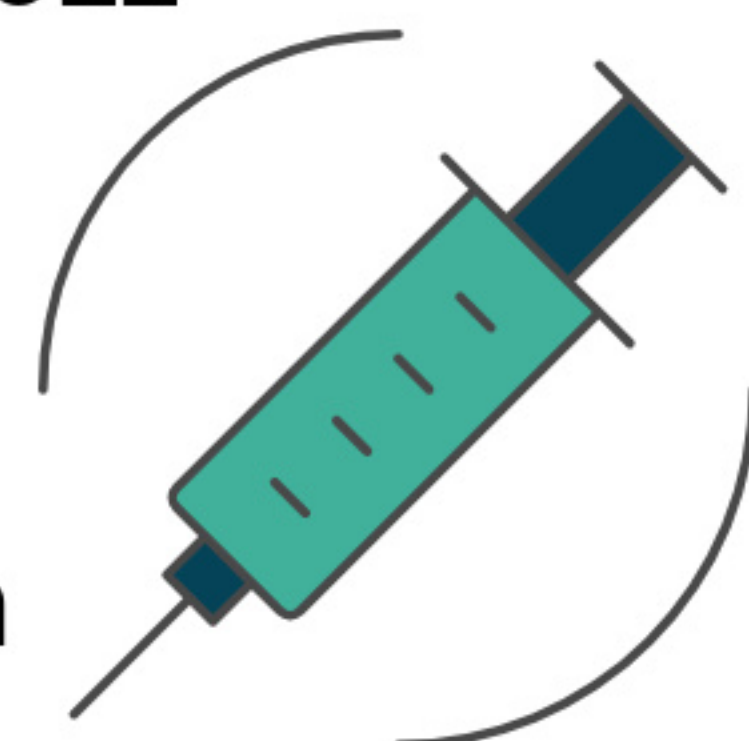
- Saturday, January 29th
- Saturdays, February 12th & 26th
- Saturdays, March 12th & 26th

QUESTIONS? Please call:
 Sherryl Hairston
 415-274-0311 x 303



COVID Vaccines and Testing Available on Treasure Island

Nurse Clinic : vaccinations
 Tuesdays, 2pm-6pm
 Please call: 415-767-2011
 Location: YMCA



Testing
 Tuesdays, 12pm-6pm
 Walk-ups welcome
 Location: Across from Island Cove Market

COVID NUMBERS ARE UP, HERE ARE SOME REMINDERS ON HOW TO STAY SAFE

Everyone is required to wear masks in the following settings:

- Indoor public spaces (until January 15, 2022)
- Workplaces (until January 15, 2022)
- Public transit
- Healthcare settings (including long term care facilities)
- Adult and senior care facilities
- Indoors in K-12 schools, childcare, and other youth settings
- State and local correctional facilities and detention centers
- Homeless shelters, emergency shelters, and cooling centers

Do

- Get vaccinated
- Wear a mask where required, in public indoor spaces, and on public transit
- Turn on exposure notifications on your phone
- Get tested if you're sick
- Honor mask rules in place at a private business
- Get tested if required by your workplace
- Wear a mask when you travel

Don't

- Lose your proof of vaccination
- Think you can't get the virus or pass it on because you feel well
- Assume everyone is vaccinated
- Expect all COVID-19 rules everywhere to be lifted
- Travel into the U.S. without proof of vaccination or a negative COVID-19 test
- Attend large events if you're sick
- Travel if you're sick

EMERGENCY PREP WORKSHOPS RETURN IN MARCH

One Treasure Island and SF CARD are so happy to announce our second series of Emergency Prep Workshops that will be offered in March 2022. If you are interested in learning more about how to prep for, survive during or thrive after a disaster, this FREE workshop series is for you! If you attend all 4 workshops, you will receive a 'starter kit' that includes many useful and potentially life-saving items.

Registration will be open soon, so stay tuned!

The workshop dates are:

Mon March 7 from 6:00-7:30pm Mon March 14 from 6:00-7:30pm

Mon March 21 from 6:00-7:30pm Mon March 28 from 6:00-7:30pm

First 3 classes will be via Zoom, if COVID permits, our last class will be in-person.



Do you have an interest in being on the front lines for your community after a disaster? NERT may be for you! Since COVID, the Treasure Island chapter of NERT is looking to rebuild its team.

Are you brand new to the NERT program?

The full NERT training consists of six class sessions that are approximately three hours each. NERT Training is free to anyone who lives or works in San Francisco.

If you are interested in learning more about 2022's trainings, please scan the QR code and register your information.



HOLIDAY SUPPORT AT FOOD PANTRY

One Treasure Island partnered with the YMCA and the Community Youth Center of San Francisco (CYC) to bring LOTS of PPE, toys and other goods to the residents of Treasure Island on Tues Dec 23, the last food pantry of the year. It was amazing to help make ends meet for TI families over another COVID holiday season. What a wonderful way to end the year!



For updates on services and island happenings

FOLLOW US ON SOCIAL MEDIA!



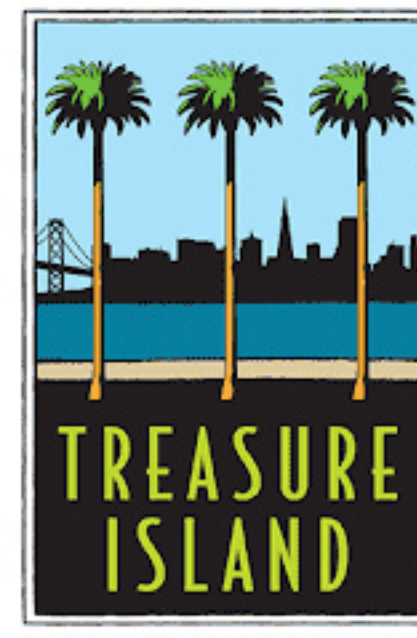
Instagram: @onetreasureisland_sf

Facebook: One Treasure Island

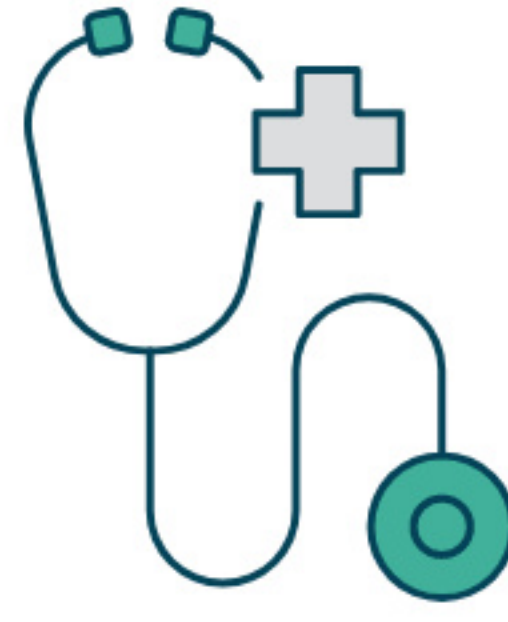
Twitter: onetreasureisla



...WHERE COMMUNITY CONNECTS



Do you use an at-home medical device



AND suffer during power outages?

You may qualify to receive a

FREE backup battery!



Call: 415-426-4795 to see if you qualify today!

Treasure Island

COMMUNITY MEETING



Please join One Treasure Island as we provide this opportunity for information sharing and communication amongst the Treasure Island community about community engagement activities/events and the island development.

Wed Feb 16 @ 6:00-7:30pm

Meetings will occur every other month through June 2022 and be on Zoom due to COVID.



No registration needed. Just scan this QR code to join the meeting.



Be the boss



8 Week Entrepreneurs Training Workshop

Sponsored by Operation HOPE and SELACO WDB Cerritos AJCC

Location: Virtual

Starting February 09, 2022 - March 31, 2022

Wednesdays 4-5:30 PM

Learn about the advantages and challenges of owning a business and Legal Business Entities. We'll show you how to get started, build a business plan, advertise your business and look for startup funding.

For more information or to RSVP call (818) 584-6131 or email

sherrie.simmons@operationhope.org

Click [here](#) to register

Operation HOPE is a 501(c)3 non-profit organization. HOPE Inside is a program delivery model of Operation HOPE. © 2016 Operation HOPE, Inc. All rights reserved.

OperationHOPE.org



Have a business idea or plan?

We want to help you execute it to reality!

One Treasure Island in conjunction with Operation Hope will be offering an Eight (8) week Virtual Business Class



**Wednesday, February 9th –
Thursday, March 31st 2022
from 4 pm – 5:30 pm.**

Interested participants must register no later than

Monday, January 31st 2022

Please email Sherryl Hairston at

Shairston@onetreasureisland.org to register.

Benefits Package:

1. 8 weeks virtual training program
2. Complete business plan
3. One on one Credit Coaching Session
4. One on one Money Management Coaching session
5. Shark Tank presentation to investors (you will have an opportunity to pitch your business idea to potential investors)
6. Stipend for your participation
7. Seed Grant



EarnIt!
KeepIt!
\$aveIt!



LOS IMPUESTOS SON DIFÍCILES. LO HACEMOS FÁCIL.

Nuestros **expertos** están listos para ayudarle—**gratuitamente**.

Lugar: Treasure Island
Nombre: Ship Shape Community Center
Dirección: 850 Avenue I
Ciudad, Estado, San Francisco, CA
Zip: 94130
Teléfono: (415) 986-4810

ABIERTO
ENERO 29 HASTA ABRIL 14, 2022

Jueves: 10 AM – 8 PM

Super Sábados:
Enero 29: 10:00 am - 1:00 pm
Febrero 12 & 26: 10:00 am - 1:00 pm
Marzo 12 & 26: 10:00 am - 1:00 pm

Instrucciones especiales: Se requiere hacer cita para los jueves. Por favor llame al (415) 274-0311 x 303

¡Usted podría ser elegible para recibir más de \$ 5,000 cuando reclame el crédito tributario estatal y federal por ingresos del trabajo!

Traiga su:

- Identificación y tarjeta de seguro social o número ITIN para cada persona en su declaración
- Todos los formularios W-2, 1099, 1098 y otros formularios de impuestos
- Su declaración de impuestos del año pasado
- Información del proveedor de cuidado de sus hijos
- Nombre, dirección y número de teléfono de su arrendador
- Información de cobertura médica para su hogar (Formularios 1095-A, B o C)
- Cuenta bancaria de ahorros y cheques para depósito directo

ES DIFÍCIL AHORRAR.
DÉJENOS HACERLO FÁCIL.



¡Ahorre una parte de su reembolso para tener la oportunidad de ganar \$100!

www.earnitkeepitsaveit.org

EarnIt!
KeepIt!
\$aveIt!



TAXES ARE HARD. WE MAKE IT EASY.

Let our **experts** do the work for you—for **free**.

Location: TREASURE ISLAND
Name: Ship Shape Community Center
Address: 850 Avenue I
City, State, San Francisco, CA
Zip: 94130
Phone: (415) 986-4810

OPEN
January 29th thru April 14, 2022

Every Thursdays: 10 AM – 8 PM

Super Saturdays:
January 29th: 10 am - 1pm
February 12th & 26th 10 am - 1 pm
March 12th & 26th 10 am - 1 pm

Special Instrctions: Thursdays appointment requires an appointment. Please call (415) 274-0311 x 303

You could be eligible for more than \$5,000 when you claim both the state and federal Earned Income Tax Credit!

Bring your:

- Photo ID for each person on your tax return
- Social Security card or ITIN for each person on your tax return
- W-2s from all jobs
- All 1099s, 1098s and any other tax forms
- Last year's tax return
- Child care provider information
- Landlord's name, address and phone number for CA Renter's Credit
- Your household's health coverage information (Forms 1095-A, B or C)
- Savings and checking account and routing numbers for direct deposit

SAVING IS HARD.
WE MAKE IT EASY.



Save a part of your refund for a chance to win \$100.

www.earnitkeepitsaveit.org



**You're invited to be a part of
the NEW mobile farmers market
FOCUS GROUP**

**The Rollin' Root Mobile Farmers
Market is coming to Treasure
Island in March 2022 and we want
to hear from YOU!**

- Have your voice heard!**
 - Contribute to community!**
 - Represent your neighborhood!**
-

**If you are interested in participating in
the focus group, please email:
communityevents@onetreasureisland.org**

**Paid ambassador
roles also available!**

Thank you!

EMERGENCY PREP

Virtual Workshop Series



GET EDUCATED. GET READY.

Please join OneTI and SF CARD to learn everything you need to know about how to prep for, survive during, and thrive after a disaster.

REGISTER TODAY!

TI residents and staff welcome!

Mon March 7
6:00 - 7:30pm

BEFORE a Disaster

Mon March 14
6:00 - 7:30pm

DURING a Disaster

Mon March 21
6:00 - 7:30pm

AFTER a Disaster

Mon March 28
6:00 - 7:30pm

Get Involved!

More Info TBD for our in-person but socially-distanced celebration!

SCAN HERE

To Register



OR CALL or TEXT:
415-426-6906

**GIVEAWAYS!
CONTESTS!
FREEBIES!
AND MORE!**



Cal OES
GOVERNOR'S OFFICE
OF EMERGENCY SERVICES



Volunteer as a Tax Preparer



The Volunteer Income Tax Assistance (VITA) is a national program created by the IRS to assist low-income individuals or families with their taxes and designated sites. Volunteers also help tax filers find out if they are eligible to claim the Earned Income Tax Credit.

You can help your community and volunteer as a tax preparer or any of the other important roles at **Treasure Island Tax Site**. As a volunteer tax preparer or reviewer, you will need to complete free training to receive your IRS certification before tax season begins. All volunteers will be asked to commit some time during the tax season from January 29th thru April 14th 2022.

We are especially seeking volunteers who are available to work on Thursdays between the hours of 10 am to 8 pm.

If you would like more information about the VITA program, contact **Sherryl Hairston** at 415-986-4810 or shairston@onetreasureisland.org

You can also learn more and sign up for a specific site by visiting United Way's Earn It! Keep It! Save It! (EKS) website: <http://earnitkeepitsaveit.org/new-volunteer> .

Thank you!



FREE!!

AT-HOME COVID TEST KITS

1. Scan the QR code
2. Fill in your name and address
3. Receive 4 FREE tests in the mail!





Treasure Island's

Spring Fling

Health Fair

SAVE
THE
DATE!



Sat April 30
12:00pm-3:00pm
Treasure Island Location:
TBD



Activities Include:

- Magic Tooth Bus!
- Tree Frog Treks
- COVID vaccines
- Health Screenings
- Rolling Root Market
- Nutrition info
- Food trucks
- Yard games
- Kids activities
- Giveaways
- Vendors
- Music

AND MORE!

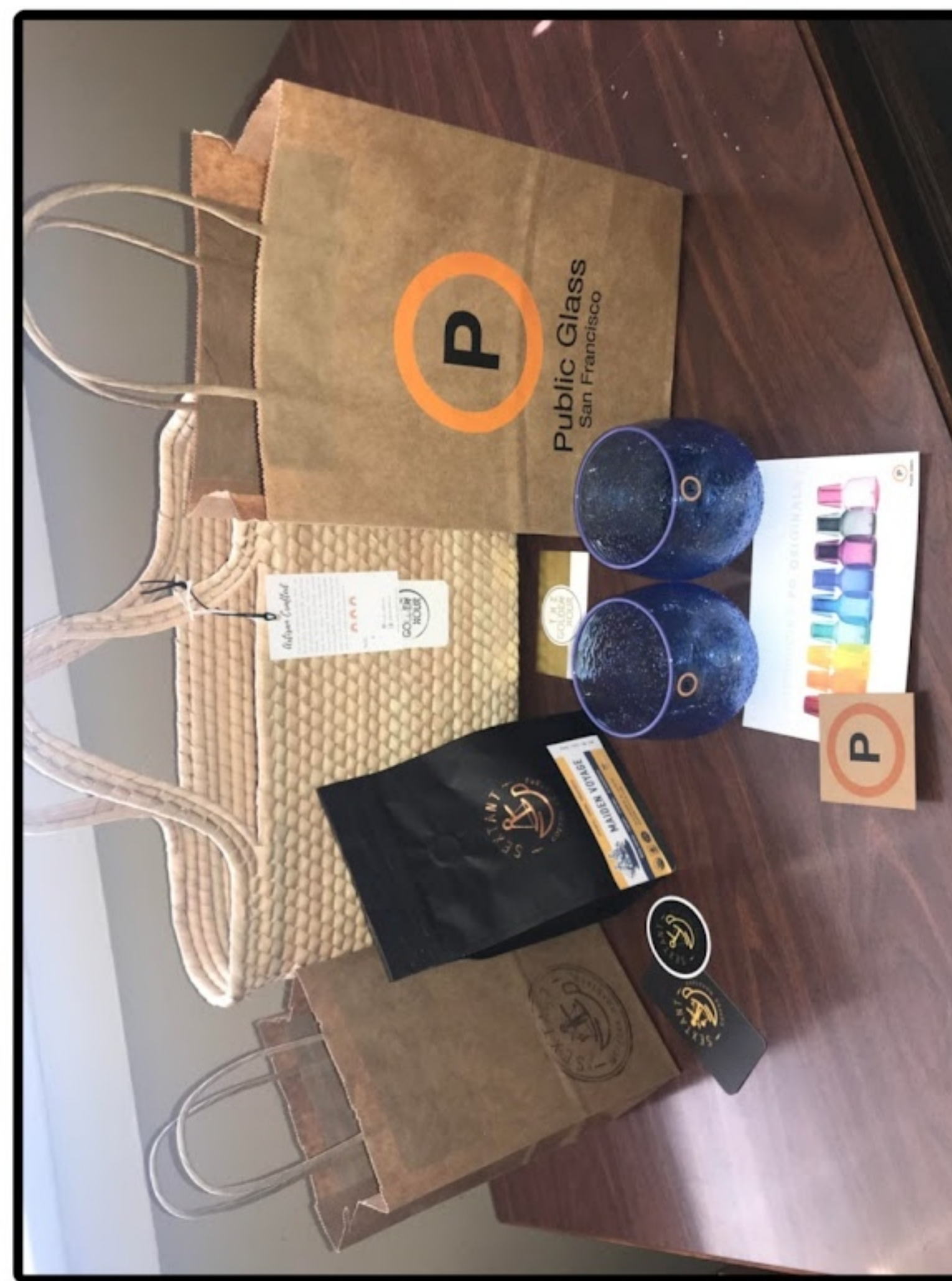




GIFT BASKET RAFFLE!

Each basket contains products from small, black owned, Bay Area businesses.

Basket #1 Tues Feb 1



INCLUDES:

- 12oz. Maiden Voyage Coffee from **Sextant Roasters**
- An Artisan Crafted handbag from **The Golden Hour**
- 2 Blue Stemless Wine Glasses from **Public Glass**

TO ENTER RAFFLE:

- Text 415-426-6906
- Include your name and address and the word RAFFLE
- Entries will be accepted until next Tues Feb 8

Earn It!
Keep It!
Save It!



LOS IMPUESTOS SON DIFÍCILES. LO HACEMOS FÁCIL.

Nuestros **expertos** están listos para ayudarle—**gratuitamente**.

Lugar: Treasure Island
Nombre: Ship Shape Community Center
Dirección: 850 Avenue I
Ciudad, Estado, San Francisco, CA
Zip: 94130
Teléfono: (415) 986-4810

ABIERTO
ENERO 29 HASTA ABRIL 14, 2022

Jueves: 10 AM – 8 PM

Super Sábados:
 Enero 29: 10:00 am - 1:00 pm
 Febrero 12 & 26: 10:00 am - 1:00 pm
 Marzo 12 & 26: 10:00 am - 1:00 pm

Instrucciones especiales: Se requiere hacer cita para los jueves. Por favor llame al (415) 274-0311 x 303

¡Usted podría ser elegible para recibir más de \$ 5,000 cuando reclame el crédito tributario estatal y federal por ingresos del trabajo!

Traiga su:

- Identificación y tarjeta de seguro social o número ITIN para cada persona en su declaración
- Todos los formularios W-2, 1099, 1098 y otros formularios de impuestos
- Su declaración de impuestos del año pasado
- Información del proveedor de cuidado de sus hijos
- Nombre, dirección y número de teléfono de su arrendador
- Información de cobertura médica para su hogar (Formularios 1095-A, B o C)
- Cuenta bancaria de ahorros y cheques para depósito directo

ES DIFÍCIL AHORRAR.
DÉJENOS HACERLO FÁCIL.



¡Ahorre una parte de su reembolso para tener la oportunidad de ganar \$100!

Earn It!
Keep It!
Save It!



TAXES ARE HARD. WE MAKE IT EASY.

Let our **experts** do the work for you—for **free**.

Location: TREASURE ISLAND
Name: Ship Shape Community Center
Address: 850 Avenue I
City, State, San Francisco, CA
Zip: 94130
Phone: (415) 986-4810

OPEN
January 29th thru April 14, 2022

Every Thursdays: 10 AM – 8 PM

Super Saturdays:
 January 29th: 10 am - 1pm
 February 12th & 26th 10 am - 1 pm
 March 12th & 26th 10 am - 1 pm

Special Instructions: Thursdays appointment requires an appointment. Please call (415) 274-0311 x 303

You could be eligible for more than \$5,000 when you claim both the state and federal Earned Income Tax Credit!

Bring your:

- Photo ID for each person on your tax return
- Social Security card or ITIN for each person on your tax return
- W-2s from all jobs
- All 1099s, 1098s and any other tax forms
- Last year's tax return
- Child care provider information
- Landlord's name, address and phone number for CA Renter's Credit
- Your household's health coverage information (Forms 1095-A, B or C)
- Savings and checking account and routing numbers for direct deposit

SAVING IS HARD.
WE MAKE IT EASY.



Save a part of your refund for a chance to win \$100.

Have a business idea or plan?

We want to help you execute it to reality!

One Treasure Island in conjunction with Operation Hope will be offering an Eight (8) week Virtual Business Class



**Wednesday, February 9th –
Thursday, March 31st 2022
from 4 pm – 5:30 pm.**

Interested participants must register no later than
Monday, January 31st 2022

Please email Sherryl Hairston at
Shairston@onetreasureisland.org to register.

Benefits Package:

1. 8 weeks virtual training program
2. Complete business plan
3. One on one Credit Coaching Session
4. One on one Money Management Coaching session
5. Shark Tank presentation to investors (you will have an opportunity to pitch your business idea to potential investors)
6. Stipend for your participation
7. Seed Grant



Clinica de Treasure Island

MARTES

2-6pm

749 9th St. (Dentro de YMCA)
entrar por las puertas en 9th St.

**Cita necesaria
para vacuna o
refuerzo**

415-767-2011



NUESTROS SERVICIOS

CHEQUEO DE PRESIÓN ARTERIAL/SIGNOS VITALES

**Cita necesaria
para vacuna o
refuerzo
415-767-2011**

EXAMEN DE AZÚCAR EN LA SANGRE

PRUEBAS DE TB

VACUNA CONTRA LA INFLUENZA

LESIONES LEVES

ENFERMEDADES MENORES (RESFRIADO/GRIPE, DOLOR DE GARGANTA,
INFECCIÓN DE OÍDO, SARPULLIDO)

EXAMEN DE EMBARAZO

PRUEBA DE ORINA (INFECCIÓN DEL TRACTO URINARIO)

CONDONES

ANTICONCEPTIVOS

ENFERMEDADES DE TRANSMISIÓN

CONSULTA DE ENFERMERA

REFERENCIAS A MÉDICO DE ATENCIÓN PRIMARIA

VACUNAS CONTRA COVID-19



San Francisco
Health Network

SAN FRANCISCO DEPARTMENT OF PUBLIC HEALTH

**Cita necesaria
para vacuna o
refuerzo
415-767-2011**

Treasure Island Nurse Drop-in Clinic

TUESDAYS

2-6pm

749 9th St. (Inside YMCA)

enter through doors on 9th St

**APPOINTMENT
NEEDED FOR
VACCINE OR
BOOSTER!**

Call: 415-767-2011



OUR SERVICES

BLOOD PRESSURE CHECKS/VITAL SIGNS

**APPOINTMENT
NEEDED FOR
VACCINE OR
BOOSTER!**

Call: 415-767-2011

BLOOD SUGAR TESTING

TB TESTING

FLU SHOTS

MINOR INJURIES

MINOR ILLNESSES (COLD/FLU, SORE THROAT, EAR INFECTION, RASH)

PREGNANCY TESTING

URINE TESTING (UTI - URINARY TRACT INFECTIONS)

CONDOMS

CONTRACEPTION

STI SCREENING (SEXUALLY TRANSMITTED INFECTIONS)

NURSE CONSULTATION

REFERRALS TO PRIMARY CARE AND MEDICAL PROVIDERS

FUTURE OFFERING: COVID-19 VACCINATION!



San Francisco
Health Network

SAN FRANCISCO DEPARTMENT OF PUBLIC HEALTH

**APPOINTMENT
NEEDED FOR
VACCINE OR
BOOSTER!**
Call: 415-767-2011

Ferry service from S.F. to Treasure Island is finally on the horizon

J.K. Dineen

Updated: Feb. 1, 2022 3:11 p.m.



Long-awaited ferry service between downtown San Francisco and Treasure Island is finally looming on the horizon.

The California Public Utilities Commission is poised to vote on Feb. 10, to establish the fare for the rapid San Francisco-to-Treasure Island service, which will likely commence by the end of the month.

Service was supposed to start on Jan. 1, but has been delayed while waiting for the CPUC to sign off on the fare, which will reduce the price of an “unscheduled, prearranged service” from \$20 to \$5 a ride.

Customers will also have the option of buying a \$150 per month unlimited ride.

Treasure Island Community Development will subsidize the ferry service until the Water Emergency Transportation Authority takes over. That is likely to happen in two to three years as more housing is completed on the 400-acre man-made island and demand for the commuter ferry rises.

Chris Meany, whose company Wilson Meany is the master developer of the 8,000-unit Treasure Island project, said the six to eight week delay has been disappointing but not a major set back.

“Unfortunately what I thought could be done by the first of the year is going to be slightly delayed,” he said. “If it takes another few weeks, so be it. We have our ferry boat ready to go, and have built a magnificent breakwater and ferry terminal. It’s going to be a game-changer.”

The ferry start date comes as the first new housing built in decades is set to open on both Treasure Island and the adjacent Yerba Buena Island. On Treasure Island, Chinatown Community Development Corp. and Swords to Plowshares are finishing up 105 deeply affordable homes, some of which will be set aside for formerly homeless veterans. On Yerba Buena Island, Wilson Meany is building 124 condos. Those will open in April.

San Francisco Chronicle

Currently, about 600 residents live on Treasure Island — mostly in old military housing constructed when the island was a Navy base — although that number could hit 12,000 over the next decades as the island community takes shape. The next residential complex set to break ground, a 20-story, 248-unit apartment complex called Tidal House, will likely be under construction by the summer, Meany said.

“Fast convenient ferry service has always been essential to integrate the Treasure Island community into the fabric of San Francisco,” said Treasure Island Development Authority Executive Director Bob Beck. Beck said the fact that the developer is subsidizing the ferry means the service will be available “years earlier than originally envisioned.”

The 48-foot ferry, owned and operated by by Prop SF, will take about six minutes to cross the bay to Treasure Island and will run between 12 and 17 times a day.

San Francisco resident Shanan Delp, who lives in the Polk Gulch neighborhood, said he has been eagerly awaiting a day when he can take his two young kids by ferry to Treasure Island and then bike the rest of the way across the eastern span of the Bay Bridge to visit his mom in Berkeley.

He said the fact that the subsidized ferry will offer fast and convenient public transportation well before most of the housing is built could be a model for other stalled San Francisco “mega-developments” like ParkMerced. Building the terminal and breakwater cost about \$50 million.

“Maybe it will become the first chapter of a new model for density,” Delp said. “I’m hopeful that Treasure Island will become a new neighborhood of San Francisco that will draw people for concerts and food and recreation — as well as the new housing.”

Motorists could soon have to pay to enter and exit Treasure Island. Here's what it would cost

Ricardo Cano

Updated: Jan. 27, 2022 5:42 p.m.



By mid-2024, people visiting San Francisco's Treasure Island by car could have to start paying tolls to enter and leave the man-made island as a way to subsidize more transit options in preparation for an expected population boom over the next decade.

Plans to implement a toll on Treasure Island have been in the works for more than a decade, and the tolls' projected 2024 launch coincides with efforts to develop 8,000 housing units on the island, with the first residents moving in this month.

Under the plan, which is being developed by the San Francisco County Transportation Authority, motorists would have to pay \$5 tolls to both enter and leave the island during peak morning and afternoon weekday commute hours on the Bay Bridge. One-way tolls on weekends and during off-peak hours on weekdays would cost \$2.50. Access to Treasure Island via car would be free between 8 p.m. and 8 a.m. on weekends and 7 p.m. and 5 a.m. on weekdays.

Residents who've lived on the island since 2019 will be exempt from having to pay the tolls, though new residents would not. The tolling plan also includes discounted rates for "moderate-income" and "low-income" motorists, similar to a delayed effort by the SFCTA to implement congestion pricing in downtown San Francisco. The tolls wouldn't apply to motorists who make less than 55% of the region's median income.

The aim of the tolling plan is twofold, according to SFCTA planners: Mitigate traffic congestion by discouraging driving to the island, and pay for more public transit as the island's population grows with added development.

San Francisco Chronicle

Still, the toll plan remains unpopular among several of the island's residents and businesses who question its need and are worried about the potentially high costs people would incur if they want to visit the island by car. East Bay visitors looking to access the island by car during peak weekday hours, for example, would have to pay \$17 in round-trip tolls — two \$5 Treasure Island tolls, along with a \$7 Bay Bridge toll — to access the island.

Jim Mirowski, owner of Treasure Island Wines, said the toll's rates and hours of operation as they're currently proposed "would just kill my business."

"No customer-facing business is going to be on Treasure Island, essentially, because it's going to discourage anybody from coming on the island," Mirowski said.

The tolls are expected to help fund a menu of public transit alternatives as the money would sustain ferry service from San Francisco to Treasure Island at half-hour frequencies, expanded bus service to downtown Oakland as well as a shuttle service that would transport residents to key destinations on the island.

Treasure Island ferry service will be operated by the Water Emergency Transportation Authority, which runs the San Francisco Bay Ferry, starting in 2024, though will be privately managed in the interim. The tolling plan would generate about \$33 million in toll revenues and cost nearly \$18 million to operate over a five-year period, according to city projections. It's expected to begin operated at a funding shortfall, and SFCTA planners project the toll system would become "revenue positive" in its seventh year of operation.

Several island residents and businesses have said they are worried that the transit alternatives funded by the tolls won't be robust enough to substitute for the convenience of driving to the island. It's a point Supervisor Matt Haney, who represents Treasure Island, acknowledged at a Tuesday meeting of the Treasure Island Mobility Management Agency Committee.

Though the pandemic resulted in steep drops in traffic and congestion across the region, San Francisco officials believe that the return of congestion levels from 2019 — when the issue hit its apex — is imminent, necessitating policies such as tolling and congestion pricing to manage future gridlock in the region.

Since the pandemic, remote work has flattened congestion peaks during weekday mornings and afternoons, traffic on the Bay Bridge has just about returned to pre-pandemic levels, and the region's weekend congestion, in some instances, has worsened since March 2020.

Specifics about the tolling plan, such as rates and hours of enforcement, are subject to change, and Tuesday's approval by the Treasure Island Mobility Management Agency Committee was just the latest step in a lengthy bureaucratic process that began in the late 2000s. An SFCTA spokesperson said the proposed toll and discount policies have to be approved by the full Treasure Island transportation board, as well as the Board of Supervisors. Dates for those meetings have not been scheduled. But Tuesday's vote gave the county transportation authority's staff the clearance to begin implementation of the electronic toll collection system that would enforce the policy.

"Just to be clear to folks, we're not committing right now to launch the toll at a certain time and guaranteeing that that will happen even if there's not transit in place," Haney said. "I hear that concern a lot."

New Treasure Island transit and tolling plan takes shape

Fees would begin in 2024, with exemptions for low-income drivers and current residents

By Benjamin Schneider • January 11, 2022 1:30 pm - Updated January 11, 2022 2:16 pm



As apartment building construction and infrastructure improvements continue on Treasure Island, officials are seeking to approve a tolling and transit plan. (Craig Lee/The Examiner)

With apartment buildings under construction and new residents arriving in a matter of months, San Francisco officials are seeking final approvals for a tolling and transit plan for Treasure Island.

The proposal includes a \$2.50-\$5 one-way toll for private cars (with deep income-based discounts), a brand new ferry service to downtown and enhanced bus service to San Francisco and the East Bay.

“It is a multimodal, comprehensive new transportation system to support a growing neighborhood,” said Rachel Hiatt, acting deputy director for planning at the San Francisco County Transportation Authority (SFCTA). The plan’s three goals are to encourage the use of transit to and from the island, provide a sustainable source of transit funding and ensure that the tolls are affordable, Hiatt said.

Starting in mid-2024, drivers would pay \$5 to enter or leave the island during peak commute hours. About 1,800 residents living on Treasure Island as of late 2019 would be exempt from the tolls, as would all households earning less than 55% of the Bay Area median income. Moderate-income people would pay half-price tolls.

Tolls would drop to \$2.50 in the middle of the weekday and on weekends, or \$1.25 for those eligible for discounts. Unlike on the region’s bridges, there would be no toll during the night when transit service is

less reliable. All tolls will be collected electronically using license-plate reading cameras on the reconstructed on- and off-ramps to the Bay Bridge.

Base Rates and Discounts (1-Way)



PERIOD	TIMES	BASE TOLL BASE TOLL (1-WAY)	DISCOUNTED TOLL LOW AND MODERATE INCOME HHS	DISCOUNTED TOLL VERY LOW INCOME HHS
Weekday Peak Toll	Weekdays 5:00 a.m. – 10:00 a.m. 3:00 p.m. – 7:00 p.m.	\$5.00	\$2.50	FREE
Weekday Off-Peak Toll	Weekdays 10:00 a.m. – 3:00 p.m.	\$2.50	\$1.25	FREE
Weekend Toll	Weekends 8:00 a.m. – 8:00 p.m.	\$2.50	\$1.25	FREE
NO TOLL	WEEKDAYS 7:00 P.M. – 5:00 A.M. WEEKENDS 8:00 P.M. – 8:00 A.M.	FREE	FREE	FREE

Tolls for accessing Treasure Island would vary for weekdays and weekends, with increases during peak hours. People residing on the island as of 2019 will be exempt from the tolls, as would households earning less than 55% of the Bay Area median income. (Treasure Island Mobility Management Agency)

The toll is expected to generate \$33 million in its first five years of implementation, with revenues increasing as Treasure Island’s population grows. Toll revenues would flow directly into improved public transit on the island, creating new service without dipping into The City’s general fund. Eight thousand new homes are slated to be built on the island by the late 2030s, housing around 20,000 people.

Muni’s 25 bus would increase its frequency on its route between Treasure Island and the Salesforce Transit Center. A new Muni line would link the island to the Civic Center neighborhood, and a new AC Transit line would travel the other direction to the East Bay. The plan also calls for bike share, car share and an on-island shuttle.

The centerpiece of the Treasure Island transit plan would be a ferry offering 15-minute rides to the Ferry Building downtown. Eventually, two zero-emissions electric vessels could ply the route, offering departures every quarter hour. The fully fledged service, operated by WETA, the same agency that runs most of the ferries in the Bay, would begin in 2024. However, a smaller ferry service provided by Treasure Island Community Development is expected to begin operation as early as this month, or whenever it gains final state approval.



Treasure Island transit improvements include a new on-island shuttle, increased frequencies of Muni's 25 bus as well as a new Muni line to Civic Center, and a new AC Transit line heading to the East Bay. (Treasure Island Mobility Management Agency)

County transportation authority planners expect to present the plan to a committee of the Treasure Island Mobility Management Agency (TIMMA) board in a public meeting on January 25. If the plan moves out of committee, the full board, comprising the 11 members of the Board of Supervisors, would then vote to authorize the plan.

This milestone would follow years of back and forth with the Treasure Island community. A vote to authorize the tolling plan was [delayed](#) in 2018, after residents criticized the outreach process, as well as the toll's burden on the island's low-income, public housing residents. As a result, TIMMA developed a tolling [exemption](#) for existing Treasure Island residents the following year. The current plan was developed in partnership with Treasure Island community groups, Hiatt said.

The latest plan includes higher tolls than the \$3.50 fee proposed in 2019. However, it also includes broader subsidies. Only the top two income quintiles would pay the full toll, with 60% of the Bay Area population eligible for discounts. "Everyone eligible for below market rate housing will have a discount and very low income folks will be exempt," Hiatt said.

If successful, the Treasure Island tolling program could provide a model for congestion pricing in downtown San Francisco, a policy The City has mulled for years. "We've learned a lot about the program structure: the toll and discount policy, the affordability structure, the fee levels, and also the use of funds," said Tilly Chang, executive director of SFCTA. "The ability to reinvest all of the funds into transit and affordability, those are the priorities for reinvesting the revenues."

bschneider@sfexaminer.com

Southern Station NewsLetter



Inside this issue:

Captain's Message	1
Community Meeting	2
Officer of the Month/ Citizen of the Month	3-4
Definition of suspicious activity	5
Definition of Community Policing	6
Crime Definition	7
Community Engagement	8
Weekly Recap/ List of Part 1 and Part ii crimes	9-10
Addressing Crime / Safety Tips	11-19
Safety Tips	20-21
Vision Zero SFMTA	
Weekly Recap/ List of Part 1 and Part ii Crime Data Maps	22-28
Comparisons of bi-annual/ monthly crime maps	29-30
Notable Arrest/ incidents	31
Monthly Comparison of Crime	32-33
Summaries of Supreme Courts Case Laws	34
Department News Release	35-37
ADs w/ Police Partners	38-43
Community Feedback	44
CPAB— Project updates	45
Vision and Values	46-47
Contacts	48

Captain Timothy Falvey's Message

January 28, 2022

Dear Southern District Community Members,

Please , join me in congratulating three Southern Station Officers on their recent promotions.

Captain Timothy D. Paine
Lieutenant Joshua A. Espinoza
Lieutenant Robert J. Imbellino

We would like to thank them for their years of service to the Southern Community and wish them luck in their new assignments.

Along with the recent promotions, Southern Station will be welcoming four new Lieutenants.

Lieutenant Romina Izaguirre
Lieutenant Luke Martin
Lieutenant Brendan O'Connor
Lieutenant Anthony Ravano

These four Lieutenant bring a wealth of knowledge and experience to Southern Station. Please join me in welcoming them to our Community.

Stay Safe!



*Captain Timothy Falvey
Commanding Officer
Southern Station*

Next Community Meeting:

Wednesday, February 16th at 6:00 pm

Locations: Zoom

RSVP by email for link at Community@sfsafe.org or SFPDSoutherstation@sfgov.org

Chief William Scott's message

<http://sanfranciscopolice.org/chief-police>

Community Meeting

February 16th Community Meeting

The December Southern Station Community Meeting will be held, **Wednesday, 02/16/2021 at 6:00pm**. We will be hosting this meeting on Zoom.

This community meeting with Captain Falvey shall dedicate a portion of monthly community meetings to a discussion of use of force and officer involved shootings.

The President's Task Force on 21st Century Policing's Pillar #2 Policy & Oversight. This will include information on what the Department is doing to support this pillar Policy & Oversight and how it affects the community.

Community Surveys:

The San Francisco Police Department is committed to excellence in law enforcement and is dedicated to the people, traditions and diversity of our City. Our mission is to provide service with understanding, response with compassion, performance with integrity and law enforcement with vision.

As part of our ongoing outreach to engage with the community and measure our success, the Department has created a community survey link to obtain valuable community feedback for our community events and programs, which will assist the Department in the development of our strategies to meet the needs of the community. If you have recently attended or participated in an event or program hosted by the Department (such as Coffee with a Cop, National Night Out, ALERT program, Youth Summer program, Community Academy or Town Hall Meeting), and have feedback regarding the event or program you attended, please take some time to fill out our community survey.

The Department has also developed a Foot Beat/Bike Patrol survey to gather valuable community feedback on the effectiveness of the Foot Beat/Bicycle Patrol, as it relates to community policing and crime strategies and an Implicit Bias survey to measure progress in the Department's commitment to impartial policing and procedural justice. Please take the time to fill out the Foot Beat/Bicycle and Implicit Bias surveys. If you have already filled out a survey, thank you! Your response will help SFPD better serve our City and continue to support our community through Safety with Respect.

SFPD Website: [Community Surveys | San Francisco Police Department](#) .

Use this link [Take Our Community Events Survey](#) and select a survey from the list.

Featured Employee of the Month

PSA Alan Li

This month's Featured Employee of the Month is Police Service Aide (PSA) Alan Li. Police Service Aide's are civilian employees of the Police Department that conduct a wide range of duties. PSA Li is a native San Franciscan and graduate of San Francisco State University.

After graduating State, Alan worked in retail while also interning for the SFPD at Taraval Station. He joined the SFPD as a PSA in 2016. Since joining the SFPD, Alan has been assigned to both Tenderloin and Southern Stations. At Southern Station, he has worked at the front desk and in the Station Investigations Office.

When not at work Alan enjoys Camping in Oregon, Fishing in Bodega Bay and Traveling. He also enjoys carpentry and has recently completed construction of a Tiny Home.

If you ever find your self at Southern Station say hello.



Featured Citizen of the Month

Katy Liddell

January 2022's featured citizen of the month is Katy Liddell. Katy a charter member of Southern Station Community Police Advisory Board or CPAB, is "retiring." She joined the board in 2009 and has enjoyed getting to know all the Southern Captains. A highlight for her is that she could have a voice for her particular neighborhood. She had co-founded the South Beach / Rincon / Mission Bay Neighborhood Association in 2008 and was adamant about assuring it got the attention it needed. She has also been an advocate for pedestrian safety and will continue that work as she walks around her part of the City. Katy values her relationships with her SFPD friends and hopes to keep in touch going forward.

Thank you Katy, for your hard work and dedication over the years.



Featured Citizen of the Month

Katy Liddell

This month's featured Citizen of the month is Katy Liddell. Katy a charter member of Southern Community Police Advisory Board or CPAB, is "retiring." She joined in 2009 and has enjoyed getting to know all the Southern Captains. A highlight for her is that she could have a voice for her particular neighborhood. She had co-founded the South Beach / Rincon / Mission Bay Neighborhood Association in 2008 and was adamant about assuring it got the attention it needed. She has also been an advocate for pedestrian safety and will continue that work as she walks around her part of the City. Katy values her relationships with her SFPD friends and hopes to keep in touch going forward.

Thank you Katy, for your years of hard work and dedication to the CPAB and the Southern Community.

Definition of suspicious activity

Suspicious activity is any observed behavior that could indicate a crime-related incident has been committed, or about to be committed. Unusual items or situations: A vehicle is parked in an odd location, a package/luggage is unattended, a window/door is open that is usually closed, or other out-of-the-ordinary situations occur.

Examples of Suspicious Activity:

- ◆ An individual peering into vehicles, to try, and locate any valuables left unattended.
- ◆ An individual trying door handles to vehicles, and/or residences to gain access to the vehicle and/ or residence.
- ◆ An individual checking front doors of residences to locate any unattended packages, or individuals following delivery trucks to see where the truck is dropping off packages.



**See something.
Say something.**

DEFINITION OF COMMUNITY POLICING

Community policing, or community-oriented policing, is a strategy of policing that focuses on the police building ties and working closely with members of the communities.

- Homeless Outreach and Outreach to Drug Users: Southern Station officers coordinate with city agencies to provide outreach and assistance to rehabilitate those who are dependent on illegal drugs and outreach to homeless individuals to connect them with resources and support.
- Foot Patrols: Southern Station has beat officers assigned to the Mission Street corridor from 4th St to 9th St and on 6th St between Mission St and Howard St.
- Monthly Police Community Relations Meetings: Community Meetings are held continuously. Officers also attend meetings with merchants groups, business groups, development authorities and others. Concerns are voiced and addressed through problem solving.
- Email Updates: Southern Station sends out newsletter updates to residents in the district that alerts residents of crime trends, upcoming community events, crime prevention tips, and information on how to contact officers at the district station.
- Twitter: Southern Station's Twitter sends out the updates on upcoming community events, notable arrests and crime alerts.



CRIME DEFINITION

Robbery – Robbery is the taking of property from another by using force or by using fear.

Assault – An assault is an unlawful attempt, coupled with the present ability, to commit a violent injury on another person.

Battery - (Misdemeanor battery) is any willful and unlawful touching of another.
(Felony battery) is the use of force or violence upon the person of another that causes serious bodily injury.

Assault is when a person swings their arm and battery is when that arm makes contact with another person.

Aggravated Assault – Assault upon another person with a deadly weapon or instrument other than a firearm or by any means of force likely to produce great bodily injury.

Burglary – The intent upon entry into a property to commit grand theft, petty theft, or any felony.

Grand Theft – Grand theft is theft committed when the value of the money, labor, or property taken exceeds \$950.

Petty Theft – Theft where the value of the property taken is less than \$950.

Community Engagement

2021 Community Engagement Bike Give Away



Weekly Recap

January 17, 2022 – January 23, 2022

Crime	Incidents	Number Arrested
Homicide	0	0
Arson	1	0
Rape	0	0
Robbery	4	0
Agg. Assault	12	3
Burglary	7	0
Auto Boost	19	0
Vehicle Theft	5	0
Other	9	2
Total	57	5

List of Part 1 and Part ii crimes

January. 17, 2022– January. 23, 2022 Crime Data Maps

Southern District Incidents	
BURGLARIES:	
Attempted Forcible Entry	0
Forcible Entry	6
Unlawful Entry - No force	3

Southern District Incidents	
ROBBERY:	
Firearm	1
Knife or Cutting Instrument	0
Other Dangerous Weapon	1
Strong-arm (No Weapon)	3

Southern District Incidents	
ASSAULTS:	
Firearm	0
Hands, Fists, Feet, Etc.	1
Knife or Cutting Instrument	1
Other Assaults (Misdemeanors)	2
Other Dangerous Weapon	6

Crime Data portal

Have you seen our Crime Data portal? This portal gives you access to items such as Crime Reports and Traffic Violation Reports. These items are updated on a quarterly basis and can be viewed here -<https://bit.ly/3foN2dD>

SF is **OPEN**

SF ya está abierto • 三藩市現已開放 • Bukas ang SF

San Francisco celebrates a safer reopening! Protect yourself, your family, and your community by following these prevention measures:

¡San Francisco está celebrando una reapertura segura! Siga estas medidas de prevención para protegerse y proteger a su familia y a su comunidad:

三藩市慶祝安全重開! 採取以下防護措施, 保護自己, 家人及社區

Ipinagdiriwang ng San Francisco ang isang mas ligtas na muling pagbubukas! Protektahan ang iyong sarili, ang iyong pamilya, at ang iyong pamayanan sa pamamagitan ng pagsunod sa mga hakbang sa pag-iwas:



Get vaccinated

Vacúnese
接種疫苗
Magpabakuna



Stay home if sick, and talk to your doctor

Quédese en casa si está enfermo
y consulte a su médico
如果身體不適, 請留在家中
並諮詢您的醫生
Manatili sa bahay kung may sakit,
at kausapin ang iyong doktor



Maximize fresh air

Aumente al máximo el
flujo de aire fresco
保持大量新鮮空氣
Padaluyin ang sariwang hangin

Wear a mask for added protection and clean your hands.

Póngase un cubrebocas para obtener protección adicional y lávese las manos.
佩戴口罩加強保護及清潔雙手。
Magsuot ng mask para sa karagdagang proteksyon at hugasan ang iyong mga kamay.



Stay healthy by getting vaccinated
and protect yourself and your community.



Get your vaccine today.
[SF.gov/getvaccinated](https://sf.gov/getvaccinated)



San Francisco
Department of Public Health

Addressing Crime / Safety tips



Child Safety

Customized Child Safety Presentations

SF SAFE's SAFE Kids workshops help kids ages 3-17 develop their own emotional language and awareness so they can make good choices and respond appropriately to sensitive situations. By moving away from a strict "victim vs. bully" approach, SAFE Kids offers children ways they can work together to avoid creating unsafe, disrespectful and damaging interactions.

Topics for children include

- "Stranger Danger vs. Trusted Adults"
- "How and When to Call 911"
- "The Importance of Knowing Parents Names and Phone Numbers" and
- "Pedestrian Safety and Street Crossing."

Topics for adults include

- "Knowledge That Parents and Caregivers Need to Keep Kids Safe"
- "When Children Should Have Cell Phones"
- "Internet Safety"
- "Safety Rules at Home When Parents Are Not Present"



Addressing Crime / Safety tips

Rewards Offered for Info Convicting Auto Burglary Fencing Operators

On Oct. 19, Mayor London Breed informed the community about a privately funded cash reward being offered for info leading to the arrest and conviction of people involved in organized criminal fencing operations behind many vehicle smash-and-grabs.



The new initiative is an essential part of an overall auto burglary strategy that looks to educate motorists and visitors; deter, investigate and arrest auto burglars; and cease the criminal enterprises that traffic in stolen goods and propel street-level auto burglaries, per the mayor's office. San Francisco Police Department (SFPD) investigations and those of partner Northern California regional law enforcement agencies point to less than a dozen auto burglary crews being responsible for most of the auto burglaries that have beset Bay Area cities of late.

"The frequent auto burglaries in San Francisco are not victimless crimes, they have real financial and emotional consequences for the victims and we're continuing to work to hold people who commit these crimes accountable," said Mayor Breed. She added that the break-ins "hurt our residents, especially working families who do not have the time or money to deal with the effects, as well as visitors to our City whose experiences are too often tarnished after an otherwise positive experience."

The mayor thanked the private sector partners for understanding "the urgency of this issue" and offered a stern warning to the organized groups responsible for the majority of these crimes "that we are committing the resources and the manpower to hold you accountable."

Private donors in the hospitality and tourism industry are funding the new cash reward system, which the mayor's office said will offer monetary incentives in exchange for info re: the leaders of organized auto burglary fencing operations. Those providing "accurate and transparent info" will be compensated up to \$100,000 pending the arrest and conviction of individuals involved; in all more than \$225,000 in funding has been raised to date, said the mayor's office.

"Organized crime has been driving a lot of the theft in this city," said Sharky Laguana, president of the Small Business Commission. "The people at the top have been raking in huge sums of money by paying street-level criminals to do all their stealing for them, making working families miserable in the process. This initiative is going to help us take these rings apart."

Continued on next page:



Addressing Crime / Safety tips

Rewards Offered for Info Convicting Auto Burglary Fencing Operators

Throughout recent months, Mayor Breed has announced the strategic deployments of police and community-based ambassadors to, in part, deter property crimes—including auto burglaries—anticipated to accompany renewed economic activity as the city reemerges from pandemic restrictions.

Announced this summer, the mayor’s Tourism Deployment Plan added 26 police officers on bike and foot patrols to high-traffic and highly sought-after travel destinations throughout the city, per the mayor’s office. Officer and community-based partner deployments were also part of the mayor’s Mid-Market Vibrancy and Safety Plan and Organized Retail Crime Initiative.

According to Mayor Breed’s office, “The combined emphasis on high-visibility patrols in areas long targeted by auto burglars has been instrumental in reducing auto burglary rates—even as tourism and economic activity begin returning to pre-pandemic levels.”

In unison with the mayor’s efforts, the SFPD has also doubled down on its “Park Smart” public awareness campaign in recent months—a collaboration between the department, SF SAFE, the San Francisco Municipal Transportation Agency, the Department of Emergency Management, the Fisherman’s Wharf Community Benefit District and local tourism and travel partners.

SFPD CompStat data for the week ending Oct. 17, 2021, show that a total of 358 auto break-ins were committed in San Francisco, which is a drop of 37 percent from the July 4 holiday, said the mayor’s office, pointing to the success of the Tourism Deployment Plan to date.

Those with info are asked to call the SFPD Tip Line at (415) 575-4444 or Text a Tip to TIP411 and begin the text message with “SFPD.” Although callers may remain anonymous, eligibility for rewards for information leading to arrests and convictions of offenders requires individuals to identify themselves to SFPD investigators.

Learn more about this initiative [here](#).



Addressing Crime / Safety tips

With the Covid-19 restrictions lifting in phases and many of us are starting to venture out again, here are some Package Theft Prevention Guide from SFSafe to help prevent your packages from being stolen.



PACKAGE THEFT PREVENTION GUIDE

☛ WON'T BE HOME?

Use the "Hold Package" option at USPS.com to have packages held at location post office for pick up. You can also arrange for neighborhoods to pick up any packages that might be delivered.

☛ CUSTOMIZE DELIVERIES

Customize deliveries by adding specific delivery instructions using USPS.com and your tracking number. You can also schedule packages to arrive when you are home or reroute packages.

☛ USE SPECIAL SERVICES

Use USPS special services like *Signature Confirmation* or *Registered Mail* to add a layer of security.

☛ DELIVER TO SECURE LOCATIONS

Send packages to secure locations such as Amazon Lockers, FedEx and UPS locations, P.O. Boxes, and local post office.

☛ REQUEST NONDESCRIPT PACKAGING

When completing your online order, opt for packaging that conceals the item or select the 'gift' option to ensure package arrives in a plain box especially when ordering from a high-end store.

☛ USE MODERN ALTERNATIVES

Take advantage of contemporary options like smart lockers, lockboxes, cameras, motion detection lighting, alarms like Package Guard, and services like Doorman.

☛ NETWORK WITH NEIGHBORS

Neighborhood groups on social media or community apps can provide a system for reporting suspicious activity. This is also a good way to keep your deliveries and neighborhood secure.

☛ PORCH AREA VISIBILITY

Keep the porch area clear and visible. The more likely a would-be thief is to be seen, the more likely they are to choose another target.





PREVENT GARAGE DOOR BREAK-INS



Garages can sometimes be the most vulnerable area of the home and they are often the entry point most targeted by thieves because of the easy access to the home. Here are some tips to help secure your garage and protect it from theft.



ALWAYS CLOSE YOUR GARAGE DOOR

This may seem obvious, but just drive through any residential neighborhood and you'll likely see a few wide-open garage doors. This is an invitation to burglars and at the very least, you're allowing passersby to easily view the contents of your garage.



INSTALL MOTION-SENSITIVE LIGHTS

Homes and garages with poor exterior lighting become more appealing targets for burglars. Ensure all entry points are well-lit. Constant lighting supplemented by motion sensitive lighting is best.



REINFORCE THE GLASS ON THE GARAGE DOOR

Add vinyl adhesive to reinforce garage windows. You can also opt for a frosted or translucent glass design to allow sunlight in while obscuring contents inside.



DON'T LEAVE GARAGE DOOR REMOTE IN YOUR CAR

A garage door remote is basically another key into your home and thieves won't hesitate to use it if they find it. Opt to use a remote on a keychain.



INSTALL AN INTERIOR MANUAL GARAGE DOOR LOCK

When leaving on a vacation or for extended periods of time, disconnect automatic door motor and install a manual lock.



TIE EMERGENCY RELEASE CORD

Tying your emergency release cord into a small ball will make it more difficult to reach by thieves who manage to break the garage windows.



INSTALL SURVEILLANCE CAMERAS

There should be at least 1 exterior mounted camera facing the street and registered with the D.A.'s office.



SECURE ANY VALUABLES

Keep all tools in cabinet systems with locks and be sure to hang and lock any bicycles. As much as possible, try to avoid keeping valuable items in the garage or inside vehicles.



HAVE A QUALITY, FUNCTIONING GARAGE DOOR

Garage doors should be as secure, sturdy, and well-built as your front door and should remain in good condition and tight fitting. Deadbolts should also be added to the garage-to-house door.



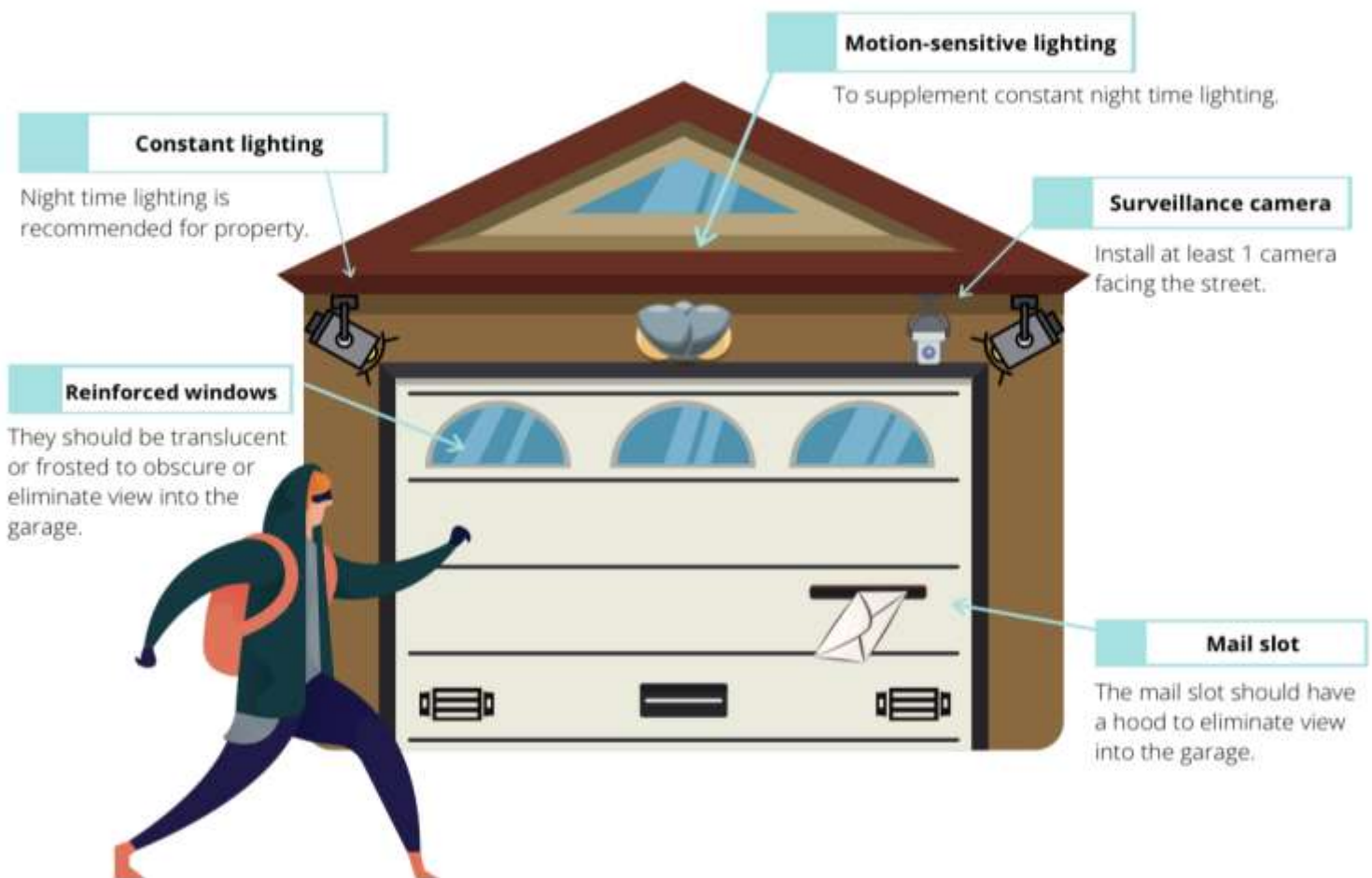
INSTALL INTERIOR MAIL SLOT HOOD COVER

If the garage door is equipped with a mail slot, a hood cover will prevent any view into the garage and its contents, eliminating enticement to enter.



PREVENT GARAGE DOOR BREAK-INS

ANATOMY OF A SAFE GARAGE



Your home is only as safe as its weakest entry point.

Your garage is an important part of your home and securing your garage is one of the most essential steps to securing your entire home. It is always recommended to regularly check and update your home's security system and safety measures.

For more information, please contact SF SAFE at (415) 553-1984 or visit sfsafe.org.

Addressing Crime / Safety tips

PREVENT THEFT FROM YOUR VEHICLE

Remember when parking your vehicle to ensure it is properly secured before walking away. Be sure that your windows are up, and your doors are locked. Thieves often check door handles to see if a car is unlocked. Remove all valuables from the inside of your car and take them with you. **PARK SMART!** Flyers available in English -Chinese - Spanish

Park Smart!



Safe Habits to Adopt:



Turn off the ignition

Never leave your car running unattended



Keep your vehicle & tires in good condition

to prevent breakdowns—stranding you in a dark or unfamiliar place



Lock your doors

when you get in your car



See something, say something

If you see a motorist in distress, call 9-1-1 versus stopping to help



Clear your trunk

and take your valuables with you every time you leave your car



If you are being followed,

drive to the nearest police or fire station—a populated area is a good default



Addressing Crime / Safety tips

Vision Zero SFMTA



In an effort to improve vehicular and pedestrian safety Citywide, TransBASEsf.org has identified dangerous intersections in the Southern District. We have implemented the “**Focus on the Five**” traffic safety initiative. Southern Station Officers will be engaging in increased traffic enforcement at these intersections and other locations in the district. Refer to the TransBASEsf.org for more detailed information.

Focus on the Five Dangerous Intersections

- Mission St @ 8th St
- 5th St @ Bryant St
- Howard St @ 6th St.
- 6th St @ Harrison
- 10th St @ Mission St

22450(a) CVC: The driver of any vehicle approaching a stop sign at the entrance to, or within, an intersection shall stop at a limit line, if marked, otherwise before entering the crosswalk on the near side of the intersection

21453 (a) CVC: A driver facing a steady circular red signal alone shall stop at a marked limit line, but if none, before entering the crosswalk on the near side of the intersection, and shall remain stopped until an indication to proceed is shown.

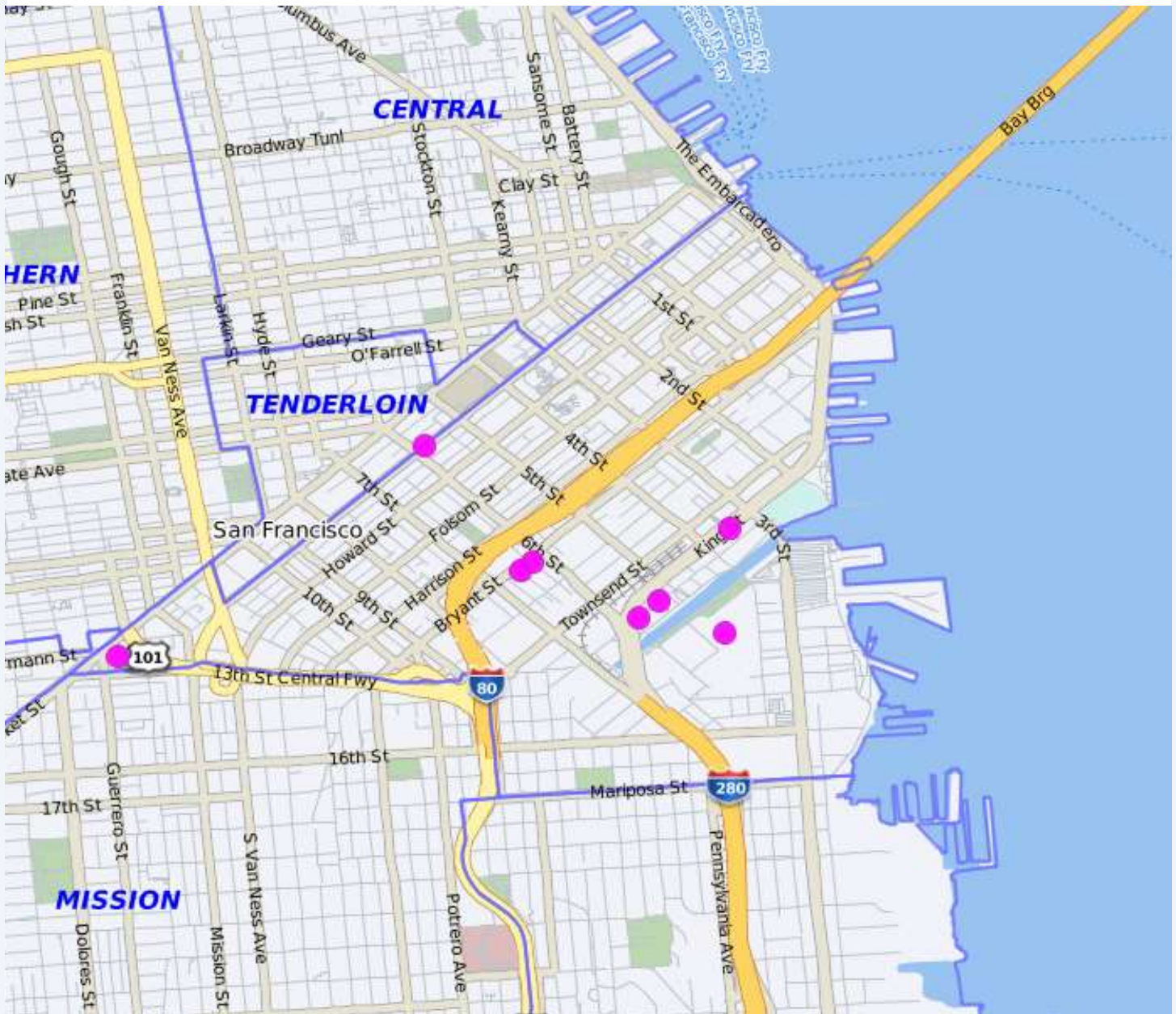
22350 CVC: No person shall drive a vehicle upon a highway at a speed greater than is reasonable or prudent having due regard for weather, visibility, the traffic on, and the surface and width of, the highway, and in no event at a speed which endangers the safety of persons or property.

21950(a) CVC: The driver of a vehicle shall yield the right-of-way to a pedestrian crossing the roadway within any marked crosswalk or within any unmarked crosswalk at an intersection, except as otherwise provided in this chapter.

22107 CVC: No person shall turn a vehicle from a direct course or move right or left upon a roadway until such movement can be made with reasonable safety and then only after the giving of an

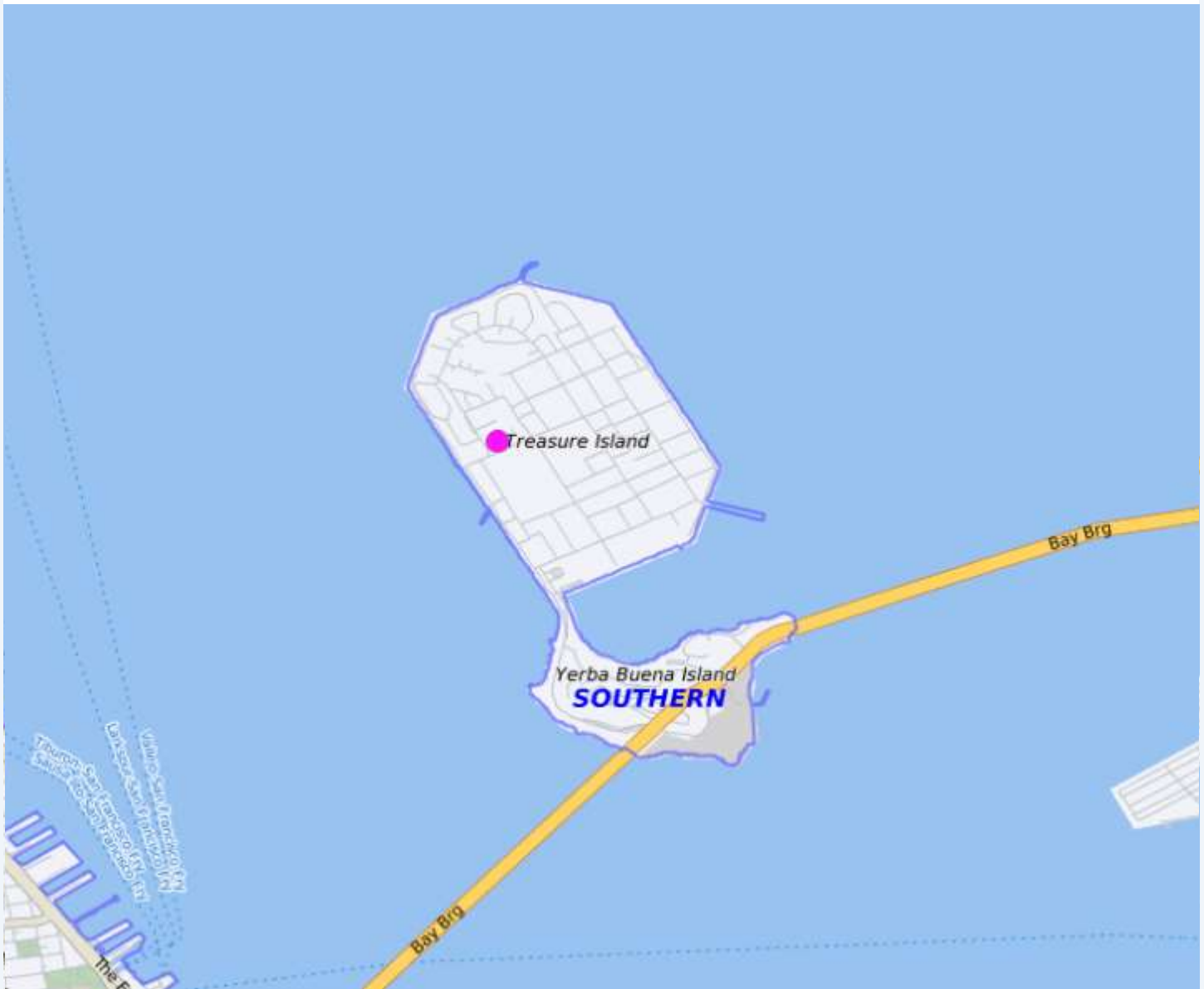
Crime data map (Week)

BURGLARIES / SOUTH OF MARKET January. 17, 2022– January. 23, 2022



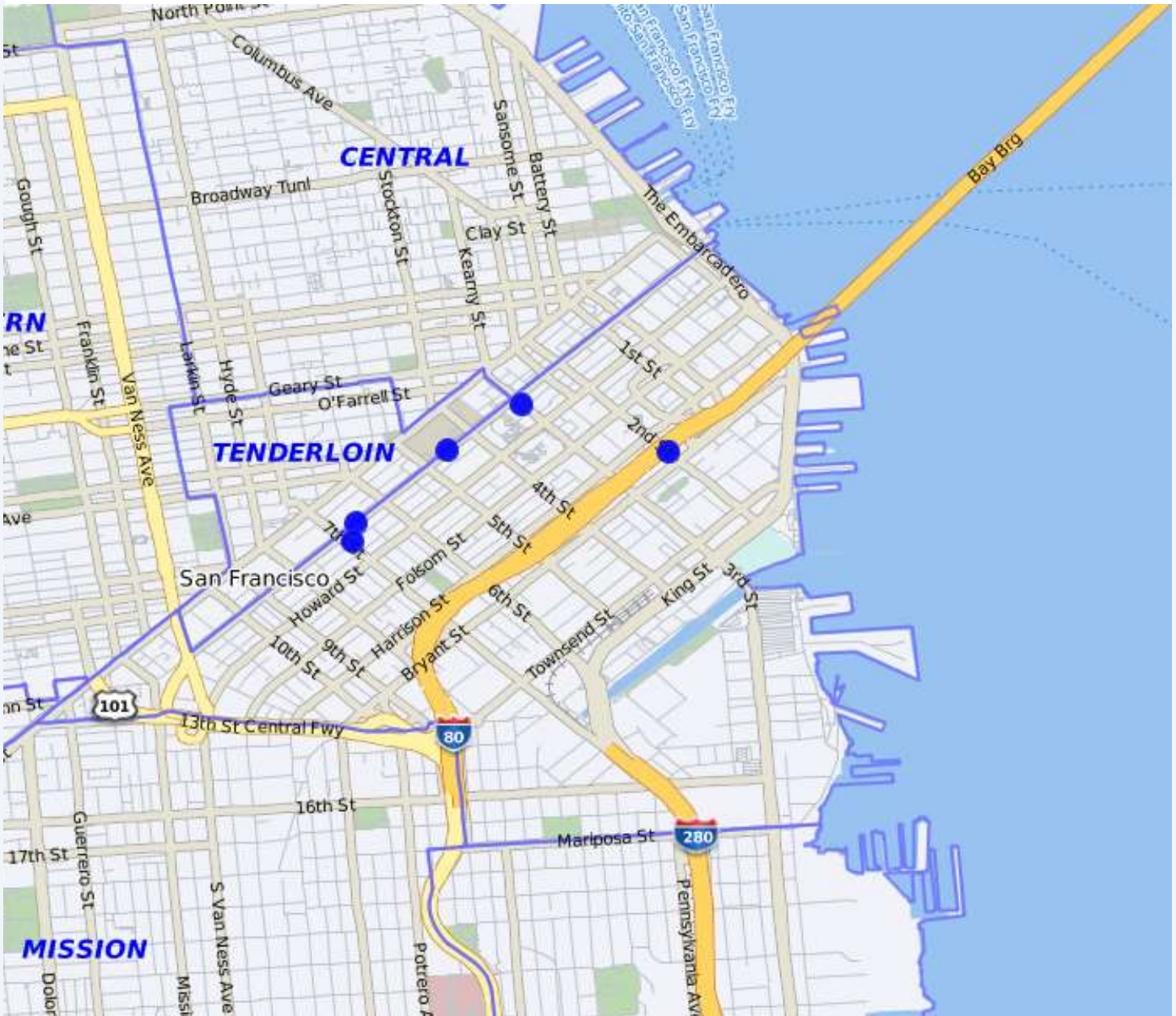
Crime data map (Week)

BURGLARIES / TREASURE ISLAND & YBI January. 17, 2022– January. 23, 2022



Crime data map (Week)

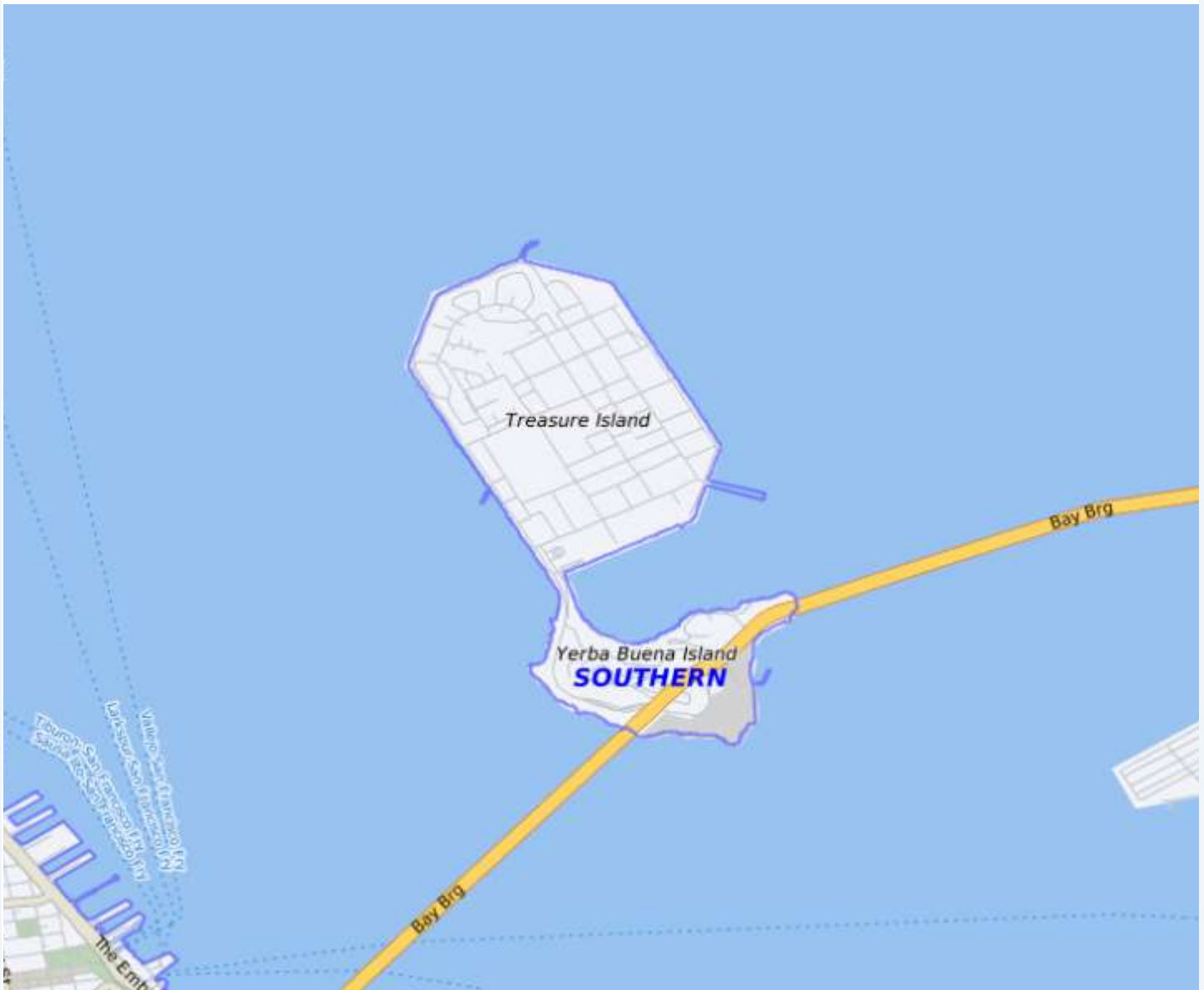
ROBBERIES / SOUTH OF MARKET January. 17, 2022– January. 23, 2022



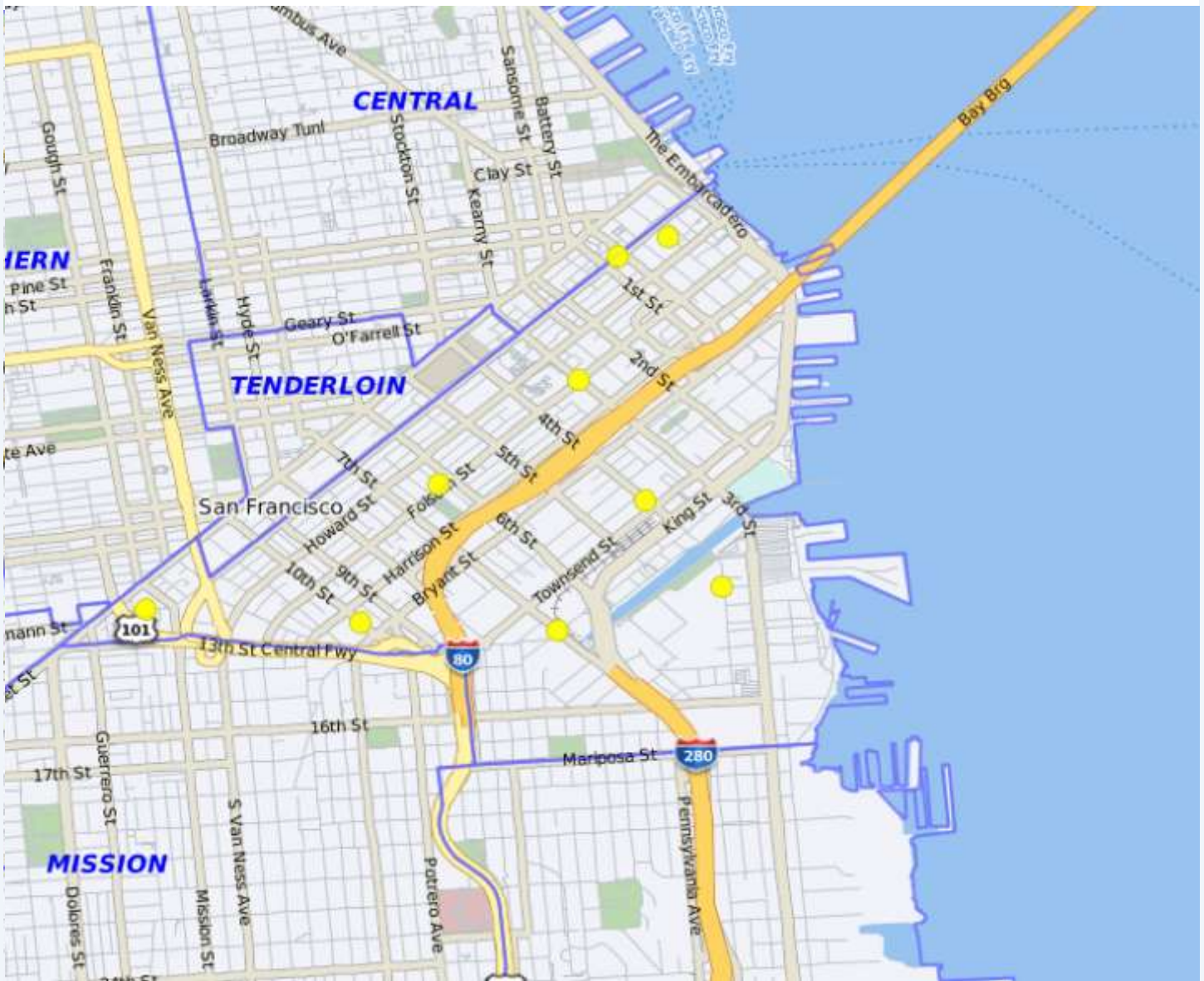
Crime data map (Week)

ROBBERIES / TREASURE ISLAND & YBI

January. 17, 2022– January. 23, 2022

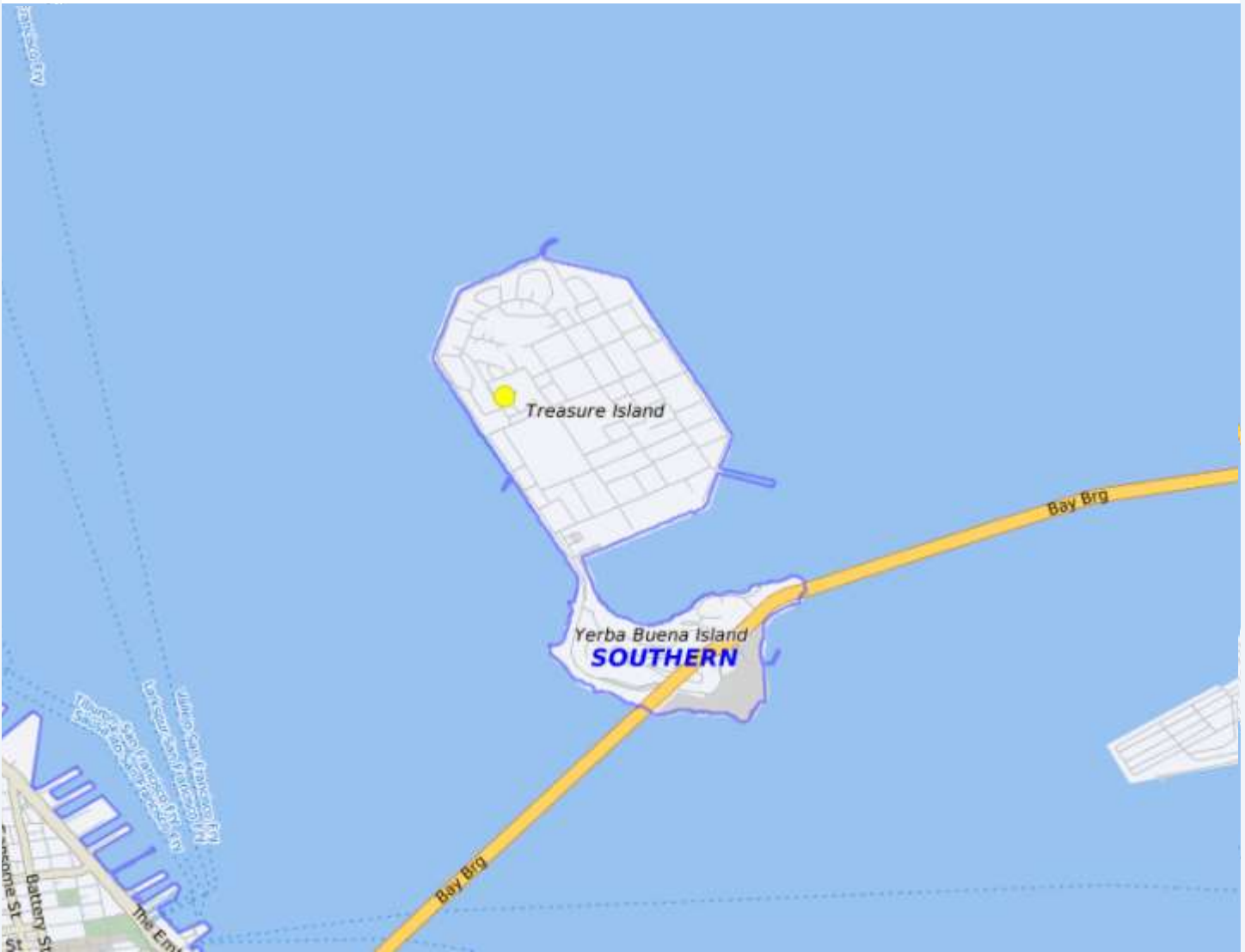


Crime data map (Week)

ASSAULTS / SOUTH OF MARKET
January. 17, 2022– January. 23, 2022

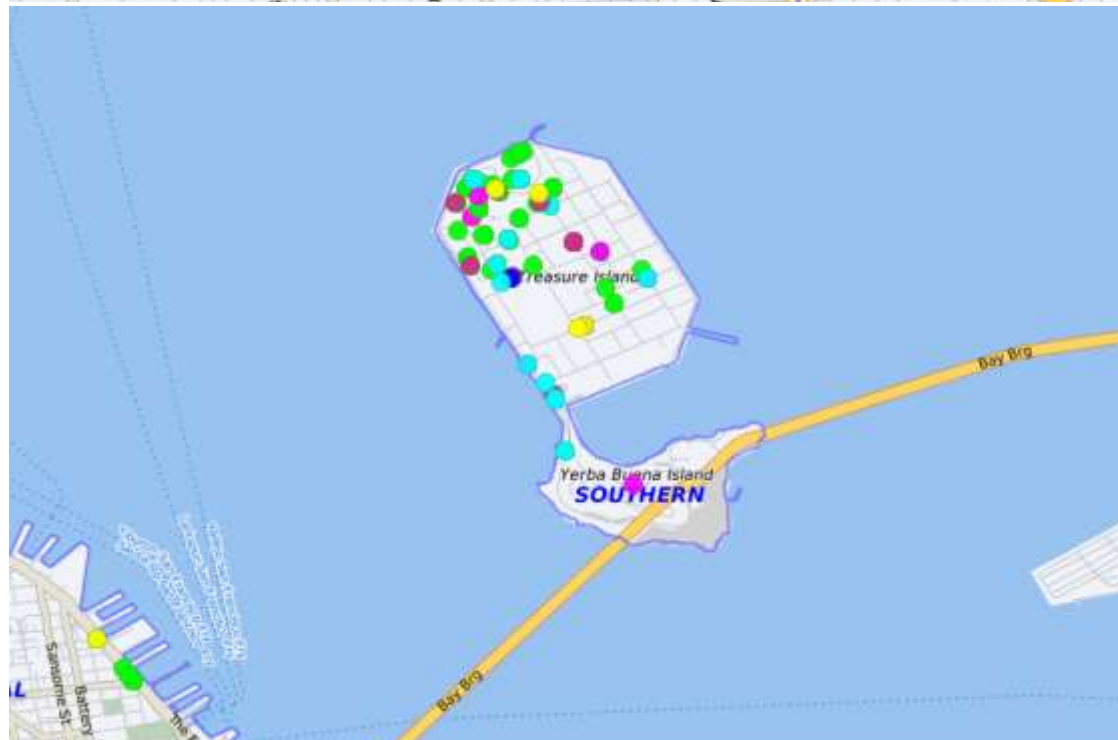
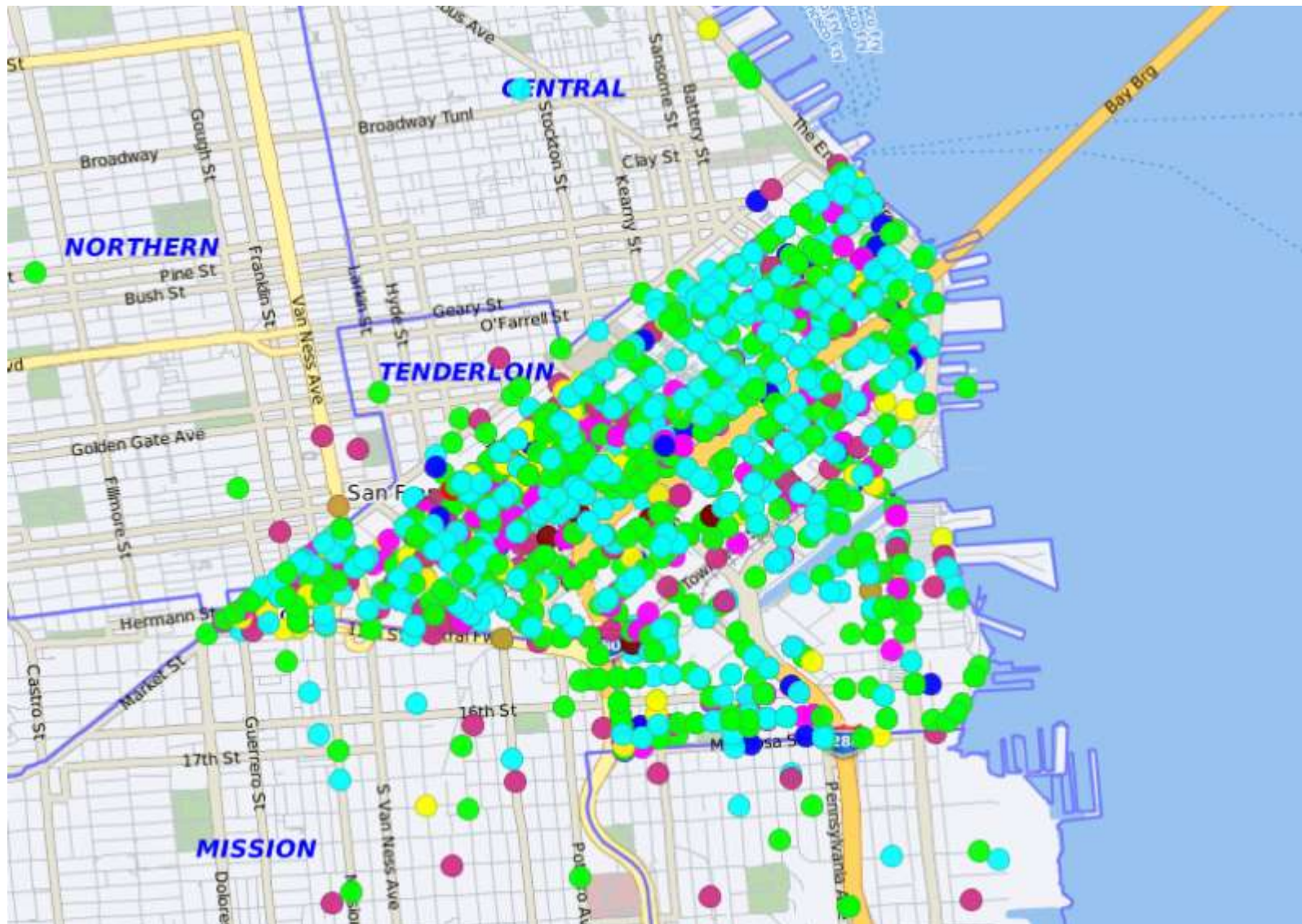
Crime data map (Week)

ASSAULTS / TREASURE ISLAND & YBI January. 17, 2022– January. 23, 2022



Comparisons of bi-annual crime maps

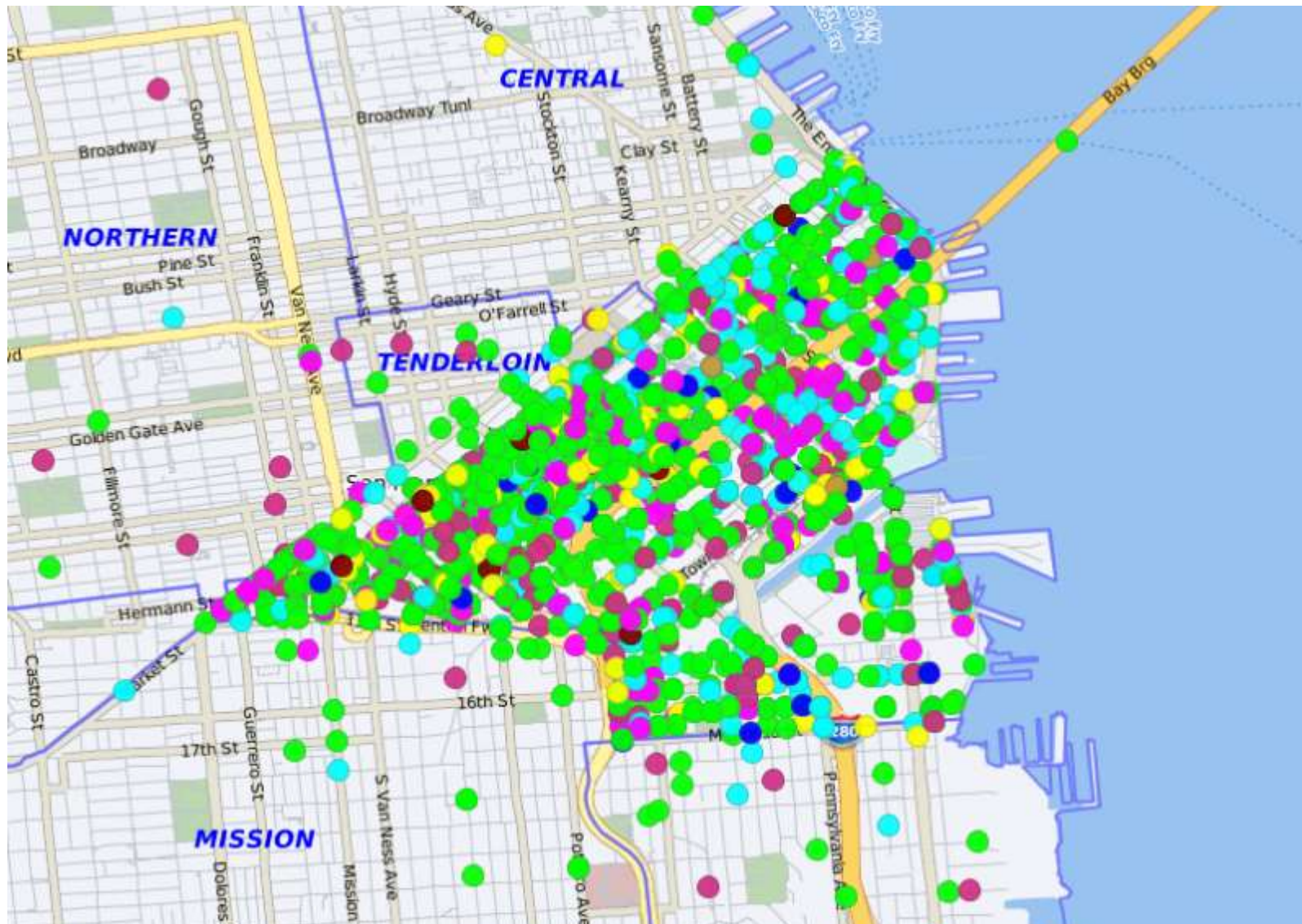
August 01, 2021– Dec 31, 2021



- INCIDENT**
COLOR CODES, INCIDENT COUNT
- Homicide
 - Rape
 - Assault
 - Arson
 - Burglary
 - Robbery
 - Larceny
 - Motor Vehicle Theft
 - Human Trafficking Sex Act
 - Other

Comparisons of bi-annual crime maps

Jan 01, 2021– July 31, 2021



INCIDENT COLOR CODES, INCIDENT COUNT

■	Homicide
■	Rape
■	Assault
■	Arson
■	Burglary
■	Robbery
■	Larceny
■	Motor Vehicle Theft
■	Human Trafficking Sex Act
■	Other

Notable arrest/incidents of note

Firearms Seized

On 01/27/2020, Southern Station Officers assigned to the midnight watch recovered 2 firearms in unrelated cases. The first was seized during an attempted vehicle theft investigation. The second was seized as the result of a warrant arrest. Case #220058766 and 220058954



Narcotic Sales Arrest

On 01/23/2022, officers patrolling the area near 7th St and Mission St took 3 suspects in to custody for narcotic sales. During the course of the investigation officers seized methamphetamine, crack cocaine, fentanyl and marijuana. In total officers seized nearly 165 grams of fentanyl, 28 grams of methamphetamine and 4.1 grams of crack cocaine. Case # 220050994



Monthly comparison of crimes

(provided last week of the month)

December 2021

Southern District Incidents	
BURGLARIES:	
Attempted Forcible Entry	5
Forcible Entry	26
Unlawful Entry - No force	25

Southern District Incidents	
ROBBERY:	
Firearm	8
Knife or Cutting Instrument	0
Other Dangerous Weapon	4
Strong-arm (No Weapon)	11

Southern District Incidents	
ASSAULTS:	
Firearm	3
Hands, Fists, Feet, Etc.	8
Knife or Cutting Instrument	3
Other Assaults (Misdemeanors)	47
Other Dangerous Weapon	12

Monthly comparison of crimes

(provided last week of the month)

November 2021

Southern District Incidents	
BURGLARIES:	
Attempted Forcible Entry	3
Forcible Entry	37
Unlawful Entry - No force	35

Southern District Incidents	
ROBBERY:	
Firearm	4
Knife or Cutting Instrument	4
Other Dangerous Weapon	2
Strong-arm (No Weapon)	10

Southern District Incidents	
ASSAULTS:	
Firearm	0
Hands, Fists, Feet, Etc.	5
Knife or Cutting Instrument	4
Other Assaults (Misdemeanors)	40
Other Dangerous Weapon	13

Summaries of Supreme Courts Case Laws

(released every 3 months-First week January, April, July, October)

Kansas v. Glover (2020) 140 S.Ct. 1183.

A Kansas deputy sheriff ran a license plate check on a truck and discovered that the registered owner had a revoked driver's license. The deputy assumed the registered owner was driving the vehicle and pulled it over. The registered owner, Glover, was in fact driving and charged with being a habitual offender. Thereafter, Glover moved to suppress the evidence, claiming that the deputy lacked reasonable suspicion to detain him.

The United States Supreme Court held that, "when the officer lacks information negating an inference that the owner is the driver of the vehicle, the stop is reasonable." The Court noted that the Fourth Amendment permits an officer to detain an individual when that officer has a "particularized and objective basis for suspecting the particular person stopped of criminal activity." Officers must be permitted to make commonsense judgments and inferences regarding human behavior. The Court found that prior to pulling the vehicle over, the deputy observed an individual operating the vehicle, he knew the registered owner had a revoked license, and the model of the vehicle matched what he observed. From these facts the deputy drew the commonsense inference that the driver was the registered owner and the Court found that provided more than reasonable suspicion to initiate the traffic stop.

People v. Henderson (2020) 9 Cal.5th 1013

Henderson was convicted of first degree murder with special circumstances, the personal use of a deadly weapon, and sentenced to death which triggered an automatic appeal to the California Supreme Court. Following his arrest, and during a custodial interrogation, Henderson initially waived his Miranda rights. When asked if he was present at the scene of the crime, Henderson stated, "Uhm, there's some things that I, uhm, want uh ...". He was again asked if he was present and Henderson continued, "[want] uh, want to speak to an attorney first, because I, I take responsibility for me, but there's other people that..."

Under established Miranda law, officers must terminate a custodial interrogation of a suspect when that individual invokes their right to counsel or to be silent. That being said, "various cases have held that a suspect's use of equivocal words or phrases does not constitute a clear request for counsel." A suspect must unambiguously assert his right to counsel or to remain silent. Courts objectively look to whether the suspect expressed their desire for counsel with sufficient clarity "that a reasonable police officer in the circumstances would understand the statement to be a request for an attorney." Courts have found the following statements to be equivocal and not an invocation: "maybe I should talk to a lawyer;" "[i]f you can bring me a lawyer;" "I think it'd probably be a good idea for me to get an attorney." In this case the court found that by stating, "[I] want to, speak to an attorney first," Henderson did not use equivocal language and the California Supreme Court found this was a violation of the Fifth Amendment.

Department Press Releases

Language Access Community Survey

About this survey: This survey is being conducted by San Francisco's Office of Civic Engagement and Immigrant Affairs (OCEIA) and the Immigrant Rights Commission to learn about how to improve language access for San Francisco communities.

The [survey](#) is anonymous and available in:

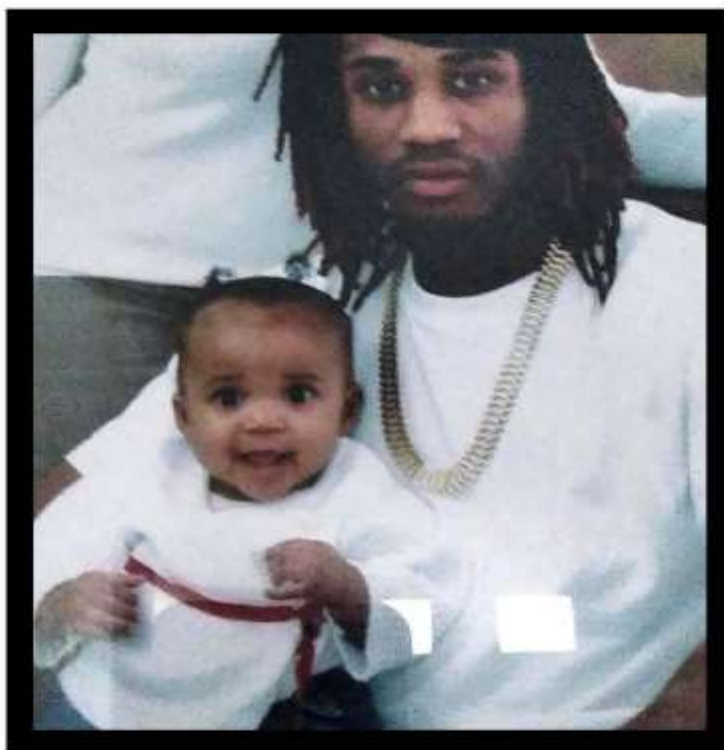
- English
- Español (Spanish)
- 繁體中文 (Traditional Chinese)
- Filipino
- 简体中文 (Simplified Chinese)
- Tiếng Việt (Vietnamese)
- العربية (Arabic)
- Русский (Russian)
- 한국어 (Korean)
- Tigrinya
- Amharic
- Samoa (Samoan)

Crime Bulletin



\$ 250,000 Reward

Re-Issue 06-032
01/03/2022



Jermaine Cooper with Daughter

The City & County of San Francisco has authorized a reward in the amount of \$250,000.00 for information leading to the identification, and apprehension of the person(s) responsible for the murder of Jermaine Cooper.

On February 15, 2006, at 2302 hours, Jermaine Cooper was shot and killed while inside the residence at 1130 Palou Avenue. Jermaine Cooper is believed to be the target of a home invasion robbery. Cooper was shot once and died in the hospital a few hours later. Jermaine Cooper was a college student in the East Bay and the father of a baby daughter.

Anyone with information or questions are urged to contact: San Francisco Police Department Homicide Detail Cold Case Sgt. Alan Levy (415)553-9245, Investigator Daniel Cunningham (415)553-9515, Investigator Daniel Dedet (415)553-1450, After hours contact SFPD Operations Center (415)553-1071. Persons wishing to stay anonymous may contact the SFPD Anonymous Tip Line: (415)575-4444.

CASE: 060 178 841

Crime Bulletin



\$ 200,000 Reward

Leading to the identification, apprehension and conviction of a serial homicide suspect.

01/03/2022

A series of homicides occurred on or near Ocean Beach between January 1974-June 1975. Throughout the years it was believed that there were five (5) homicide victims. As a result of a new investigation, it is believed that Warren Andrews may be the sixth victim of the same suspect. On April 27, 1975, Andrews was a victim of an assault/battery at Land's End. Andrews was found unconscious and never regained consciousness, dying approximately seven weeks later. All six (6) victims were believed to be Gay Caucasian males.

In July 1975, two different attacks on Gay Caucasian males occurred within two weeks of each other in the Fox Plaza Apartments. Both of the victims who were attacked lived on the same floor but did not know each other. It was determined by Homicide Inspectors at the time that there was a connection between the attacks at/near Ocean Beach and the attacks at the Fox Plaza Apartments.

One of the survivors from the Fox Plaza attacks had met the Suspect after the bars closed in July of 1975 at the "Truck Stop" diner near Market/Church St. The Suspect was drawing animal figures on a napkin. The suspect commented to the Victim that he was attending art school and was studying to be a cartoonist. The Victim believed the suspect to be skillful in drawing as he himself had a background in art. In October 1975, this survivor who spent the most significant amount of time with the suspect was able to provide Homicide Inspector's with specific suspect information which generated a composite of the suspect who committed the two attacks in the Fox Plaza.

Soon after, a phone call was made to police with a name and a vehicle plate of a suspect. After this call, additional citizens contacted police with information naming the same suspect. The person named was interviewed by SFPD Homicide in January 1976 and he was considered a strong suspect. This same person interviewed by police in 1976 is still the focus of our investigation in 2022.

We believe there are other persons who may have survived attacks by this same suspect or may have information regarding this suspect and these attacks



African American Male 19-25 years old
5'11"-6'0" Medium Complexion, smooth skin
lanky in appearance.

1975 Forensic Sketch



This is an age progression sketch (based on the original composite which appears on the left), as to how the suspect may possibly look in 2018.

2018 Forensic Sketch

If you have any information regarding these homicides/attacks please contact Cold Case Investigators Sergeant Alan Levy (415 553-9245) alan.leavy@sfgov.org , Daniel Dedet (415 553-1450) daniel.dedet@sfgov.org or Daniel Cunningham (415 553-9515).

CASE: 75-038615

SAN FRANCISCO POLICE DEPARTMENT



Auxiliary **L**aw **E**nforcement **R**esponse **T**eam

A.L.E.R.T.



Are you someone who is interested in disaster preparedness and wants to help out your community while working hand in hand with Law Enforcement? If so, then the ALERT program is for you!



What is the ALERT Program?

The San Francisco Police Department Auxiliary Law Enforcement Response Team (ALERT) is a volunteer civilian disaster preparedness program. The ALERT program trains unpaid members of the public to assist Law Enforcement in various tasks after a major disaster, and in other identified non-disaster activities throughout the year.

Volunteers must be at least 16 years of age and must live, work, or attend school in San Francisco. ALERT volunteers must pass a DOJ/FBI background check and complete two, 8-hour classes to graduate.

Active members must participate in one 4-hour drill in each calendar year to remain active but may also donate more time during various Station support and outreach activities. ALERT members also have many opportunities to work alongside Officers and to support the community throughout the year.

Day #1 Class

- Introduction to ALERT
- The Law
- Deployment Protocols
- Traffic Control
- Radio Communications

Day #2 Class

- Conflict Resolution
- Medical Assistance
- Missing Person Search
- Patrolling & Site Protection
- Graduation

2021 NEW VOLUNTEER CLASS SCHEDULE

Classes are conducted remotely using Zoom during the COVID-19 Pandemic.

We are forming our next training class now. To join the class, contact Lt. Chacon using the information below.

How To Join ALERT

Contact **Lt. Marina Chacon** (SFPD Retired)

ALERT Program Coordinator

Phone: **415-558-5545**

E-mail: sfpdalert@sfgov.org



Web: www.sf-police.org/alert

Facebook: www.facebook.com/sfpdalert



The San Francisco Neighborhood Emergency Response Team (NERT) is free training from the San Francisco Fire Department in how to help yourself and your neighbors prepare for and respond to a disaster by working together. The 20-hour training includes personal preparedness, light search and rescue, disaster medicine, shutting off your utilities, and how to participate as a member of a neighborhood response team. NERT also offers continuing training for graduates, and activities that support building robust neighborhood teams.

For more information, visit the NERT website at <http://sf-fire.org/NEIGHBORHOOD-EMERGENCY-RESPONSE-TEAM-NERT> or contact Captain Erica Arteseros at (415) 970-2022 or sffdnerf@sfgov.org.



San Francisco Police
Activities League



LAW ENFORCEMENT CADETS

- Gain leadership and career skills
- Character development
- Community Service
- Internship at SFPD stations/Bureaus

4-Week summer training

Minimum qualifications:

- 14 - 20 years old
- Reside or attend school in San Francisco
- Enrolled in high school/college
- Have and maintain a 2.0 GPA
- Pass SFPD criminal history background check

Would you like to learn more about the
program or SFPAL?

Please visit our website @sfpal.org or contact
our office (415) 401-4666



San Francisco Police Activities League



We offer the following programs to SF youth:

- Fishing
- Flag Football
- SFPAL 49ers Football & Cheer
- Jiu-jitsu
- CrossFit
- Law Enforcement Cadets
- Virtual Chess
- Virtual Art

Building Community through Youth Sports and Healthy Activities



For More information or registration visit our website @ sfpal.org



SFPAL
PO Box 31114
San Francisco, CA 94131

SFPAL Girls Basketball I



SFPAL's Girls Basketball program, in partnership with the Academy of Art University, is scheduled again for March 2022. The program will focus on teaching kids the fundamentals of basketball in a safe and structured environment.

Practice will be held twice a week at the Academy of Art University gym located at 2225 Jerrold Ave. San Francisco. Teams will compete in their division within the CYO League. All teams will be coached by active police officers and supported by the Urban Knights Basketball coaches and players, as well as Frank Allocco, Executive Senior Associate Athletic Director at the University of San Francisco.

SFPAL HAS WAIVED ALL REGISTRATION FEES.

If you have any questions about the Basketball program, please feel free to contact the PAL Office at (415)401-4666 or email us at admin@sfpal.org

Registration Starts: January 1, 2022

Registration Ends: when all available spots are filled.

All forms must be submitted to be considered fully registered, and ensure a spot on the team. Space is limited and spots will be filled on a first-come, first-served basis.

****Please note that players with prior AAU experience are not allowed to compete in the CYO League.**

Feedback provided by Community on crime trends or events

The SFPD wants to hear from YOU.

We are committed to excellence in law enforcement and are dedicated to the people, traditions and diversity of our City. Our mission is to provide service with understanding, response with compassion, performance with integrity and law enforcement with vision.

We welcome your comments. Let us know how we're doing, what we could be doing better and your thoughts on how your police department can work more closely with the community we proudly serve.

Visit us at [sanfranciscopolice.org/feedback](https://www.sanfranciscopolice.org/feedback). Your feedback will help SFPD better serve our City. Comments will be reviewed by our Community Engagement Unit and forwarded to the relevant unit, department office or neighborhood station for review and follow up, if appropriate.

(If this is an emergency, please call 911. For non-emergencies, call 415-553-0123. You may also visit <http://sanfranciscopolice.org/police-commendation-complaint> for more information on providing input on SFPD policies and practices.)

Help SFPD solve homicide cold cases.

<https://www.sanfranciscopolice.org/stay-safe/ongoing-investigations/homicides-and-cold-cases>

Other SFPD tip line

[Narcotics Tip Line | San Francisco Police Department](#)

Narcotics Tip Line 1-800-272-2548



CPAB— Project updates

(provided monthly 1st week)

December 2021

Community Police Advisory Board (CPAB) “CPABs” are community-oriented police advisory boards for each police district. Each CPAB, led by the District Captain for that police district, is comprised of approximately 10 to 15 committed volunteer community members and a representative from the Community Engagement Division of the SFPD. District Captains may choose more members if they wish to accomplish specific tasks. Each district’s Board members live and/or work in the communities within that district, where a community may be either a neighborhood with specific needs or a specific demographic. Each member thus represents the diversity of their community. In addition to the district CPABs, there will also be a City-wide CPAB Steering Committee facilitated by SF Safety Awareness For Everyone (SAFE). Two representatives from each Community Police Advisory Board shall be selected to participate in this Committee, with the purpose of sharing information across districts.

Captain Falvey held his monthly CPAB meeting on 07/18. Time was spent discussing upcoming community events including National Night Out which is to be held August 3rd.

Station / Department Vision and Values



Everyone deserves to be treated fairly.

SFPD officers undergo Implicit Bias & Procedural Justice training. Our goal is ensure fair, impartial community policing.

We're dedicated to providing *Safety With Respect for All.*



Learn about our ongoing efforts to eliminate bias and increase accountability at [sanfranciscopolice.org/bias-free](https://www.sanfranciscopolice.org/bias-free).

A guiding principle of the San Francisco Police Department is its commitment to treating all people with dignity, fairness, and respect. It is crucial for our members to carry out their duties in a manner free from bias and eliminate any perception of policing that appears biased. Biased policing is unsafe, unjust, and ineffective. It also alienates the public, fosters distrust of police, and undermines legitimate law enforcement efforts.

The SFPD is dedicated to ensuring our officers and professional staff provide unbiased, quality service to the diverse communities we work for. Our goal is to provide fair and positive interactions between San Francisco officers and the people we are proud to serve.

<https://www.sanfranciscopolice.org/your-sfpd/policies/bias-free-policing>



每個人都應該得到公平的對待。

SFPD 官員接受不偏不倚的程序及正義培訓。我們的目標是確保公平公正的警務。

我們致力提供所有安全及尊重。



想了解更多地消除偏見並增加同責制，請上網到我們的網站 [sanfranciscopolice.org/bias-free](https://www.sanfranciscopolice.org/bias-free)。



Todos merecemos ser tratados con justicia.

Los oficiales de SFPD se someten a entrenamiento de imparcialidad y justicia procesal. Nuestro objetivo es garantizar policía comunitaria justa y imparcial.

Estamos dedicados a brindar seguridad con respeto para todos.



Conozca nuestros esfuerzos para eliminar el sesgo y elevar la responsabilidad en: [sanfranciscopolice.org/bias-free](https://www.sanfranciscopolice.org/bias-free).

Station / Department Vision and Values

NOW'S THE TIME

JOIN THE SFPD
GO TO SFPDCAREERS.COM



Join the SFPD – and be part of San Francisco's finest!

San Francisco is a world-class city with a world-class police force. From Fisherman's Wharf to Golden Gate Park and from Nob Hill to the Tenderloin, whether we're on foot patrol, horseback, or in squad cars, investigating felonies, responding to emergencies or leading classes on public safety, we're working with you to help keep our community safe.

"The San Francisco Police Department offers qualified men and women the opportunity to make a positive difference in our citizens' daily lives. I encourage you to apply today to see how you can become one of San Francisco's finest."

– Chief William Scott

Applying is easy!

We are accepting Entry Level (Q-2) Police Officer applications. To apply please follow the 2-step process:

1. Apply with the City and County of San Francisco at www.jobaps.com/sf (Entry Level (Q-2) Police Officer)
2. Go to www.nationaltestingnetwork.com, choose law enforcement and register to take the San Francisco Police Department's Written Examination*.

*As part of this process, you will need to establish an account with NTN. A fee is required to take the written examination. Candidates with demonstrated financial hardship may submit a request to have the fee waived prior to test registration. See "Candidate FAQ #27" on the NTN website (<https://nationaltestingnetwork.com/publicsafetyjobs/faqs.cfm>) to learn more on how to apply for a fee waiver.

Have Questions? Contact the San Francisco Police Department Recruitment Unit

1245 3rd Street, 5th Floor, San Francisco, CA 94158
Phone: 415-837-7270
Fax: 415-575-6095

 joinsfpd@sfgov.org

   @SFPDRecruitment

The San Francisco Police Department values diversity in its workforce, and is committed to fair and equal treatment of all applicants for employment. Discrimination on the basis of sex, race, religion, color, national origin, ancestry, disability, medical condition, marital status, sexual orientation, or other protected categories is prohibited and unlawful.

Contact numbers and email s

EMERGENCY:	911
Non-Emergency:	553-0123
Cell Phone 911:	911
SF Services Center:	311 / www.sf311.org
Southern Station:	575-6000 sfpdsouthernstation@sfgov.org
Captain Timothy Falvey	575-6000 sfpdsouthernstation@sfgov.org
Patrol Lieutenants	575-6000
Anonymous Tip-Line	552-4901
SF S.A.F.E.	553-1984 community@sfsafe.org
Website:	SFPD Southern Station Website
SFPD Tip Line:	575-4444
Text a Tip:	847411 (Tip 411)
SF Homeless Outreach: HSOC	734-4233
Graffiti Abatement:	278-9454
Southern Events:	575-6000 Sgt. D. McDonnell
Southern Permits/ Code Abatement:	575-6000 Ofc. L. Gabriel
Deputy DA, Southern:	553-9407
Dept. of Parking & Traffic:	553-1943
DPW Dispatch	311
Deputy City Attorney	554-3887 - Jennifer Choi
D6 Supervisor	Matt Haney Matt.Haney@sfgov.org 415-554-7970 https://sfbos.org/roster-members https://sfbos.org/supervisor-haney-district-6

