



TREASURE ISLAND CONSTRUCTION ADVISORY

Treasure Island Road, Hillcrest Road and TI Causeway Intermittent Traffic Control

Monday November 29 through Tuesday December 7, 2021

Starting Monday November 29, 2021 City and County of San Francisco Department of Technology will be installing communications lines associated with the Development Project along Yerba Buena Island Northgate Road and Treasure Island Road, and along Treasure Island Causeway. See diagram of overall project area below.

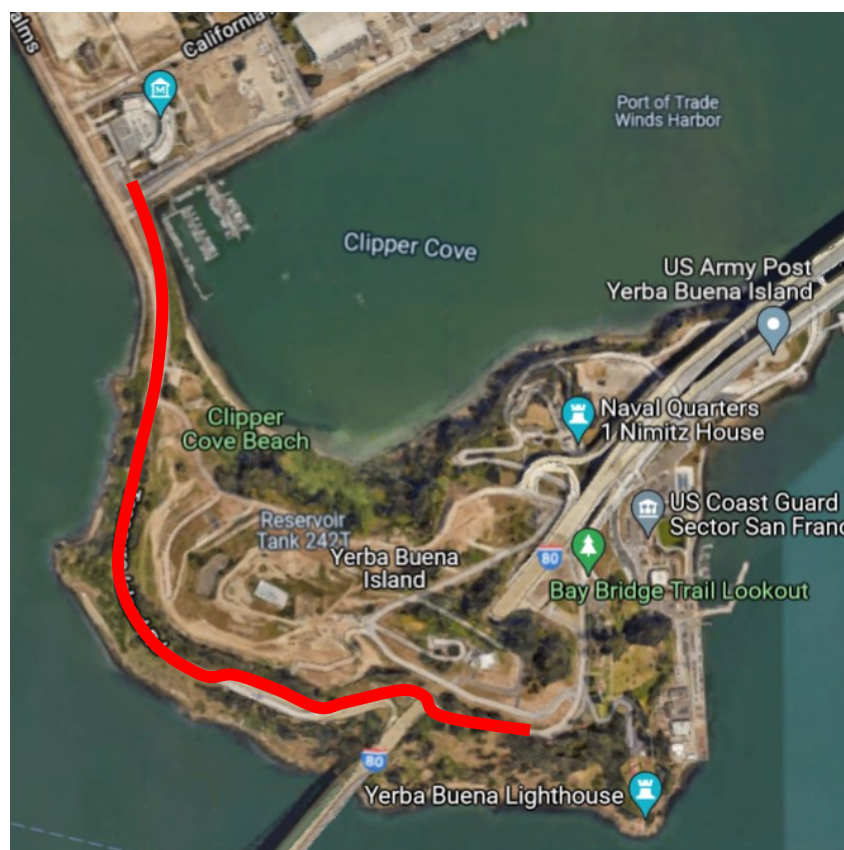
Rolling one-way traffic control with flaggers will be in place along Northgate Rd., Treasure Island Rd. and Treasure Island Causeway at various times through the work period to assure worker safety. The Island community can expect the following:

Dates/Time of Work:

- Monday through Saturday, Monday November 29, 2021 through Tuesday, December 7, 2021.
- Between 7:00 AM and 7:00 PM each workday.

Nature of Work and Traffic Impacts:

- Crews installing infrastructure inside underground trenches and along existing streetlight poles.
- One-way traffic control with flaggers will be in effect at each end of an active work zone when on-street work is taking place.
- No impacts to MUNI 25 bus route or stops.
- Please plan for slight delays through work zones when traffic control flaggers are present.





Treasure Island Community Development (TICD)
PHASE ONE CONSTRUCTION ADVISORY
Treasure Island Road and Causeway Realignment

On Thursday morning December 2, 2021, TICD and its contractors will realign traffic lanes on the Causeway connecting Treasure and Yerba Buena Islands. Current traffic lanes with one lane in each direction on the western half of the Causeway will be switched to the eastern half.

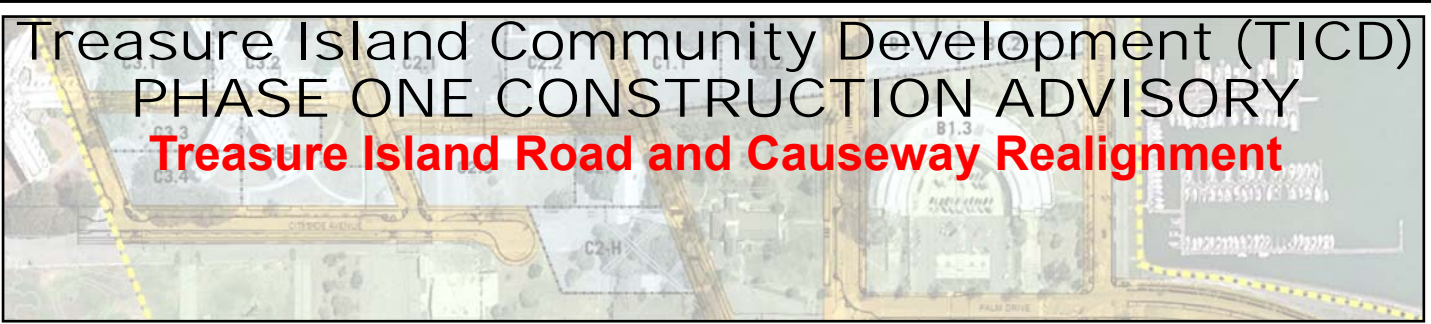
See traffic circulation and detour diagram on the reverse of this flyer.

The Island community can expect the following new Island traffic circulation as of Thursday, December 02, 2021:

- Development contractor will set up traffic control to guide inbound and outbound traffic to drive on the eastern half of the Causeway starting around 9am in the morning.
- All vehicle will travel on the eastern half of the Causeway with one lane for each direction.
- Inbound and outbound SFMTA-MUNI 25 Treasure Island bus stops at Building 1 will shift east to match the realigned roadway.
- Building 1 driveway entrance and parking spaces will remain unchanged
- Traffic will be guided by traffic control to get back on the current Ave of the Palms detour north of the California Ave.
- Pedestrian and bicycle access will remain restricted along Treasure Island Causeway with this new alignment. Opening of dedicated Causeway pedestrian and bicycle paths is currently scheduled for April 2022.
- All other on-Island streets and intersections will remain unchanged from the current condition.

Drive safely and share the road at all times on-Island!

Treasure Island Community Development (TICD) PHASE ONE CONSTRUCTION ADVISORY **Treasure Island Road and Causeway Realignment**



TICD Construction Hotline (888) 469-0797

Please call the TICD Construction Hotline with any questions or concerns related to construction activities associated with the redevelopment of Treasure Island and Yerba Buena Island.

sftreasureisland.org/construction



NOTICE



scan to view on
NAVSTA TI website

Transportation and Disposal Activities Solid Waste Disposal Area Westside Installation Restoration Site 12, Housing Area Former Naval Station Treasure Island

Work Will Be Performed Between

Monday, November 15, 2021 – Friday, April 1, 2022 from 8:00

AM to 5:00 PM,

Monday – Friday, excluding holidays

The Navy's contractor, Gilbane, will be working at Former Naval Station Treasure Island within the Solid Waste Disposal Area (SWDA) Westside Drive

WHY IS WORK BEING DONE?	The Navy is preparing to dispose of the remaining excavated material removed as part of the NTCRA and import material to restore pre-excitation grade.
WHAT WILL BE DONE?	<ul style="list-style-type: none"> Excavated material has been cleared for radiological and munitions concerns; and, chemically sampled to facilitate proper disposal of at an offsite landfill. Clean soil material will be imported to restore the SWDA to pre-excitation grade. Dust control and air monitoring will be implemented to prevent airborne particulates during transportation of material for disposal and dust control measures will be applied to the stockpiles of clean imported fill material. All trucks entering and exiting the Site will be tarped and marked with a green dot. Trucks will also abide by the US Department of Transportation Safety Compliance measures.
WHERE WILL IT BE DONE?	See the map attached to this notice for the blue arrows depicting the route the large trucks carrying soil will follow. An alternate route (in red arrows) depicts the trucking route in the case of closed or blocked roads. Noise associated with heavy equipment backup alarms is anticipated in the work area located between Gateview Avenue and Perimeter Road. Additionally, heavy equipment, such as street sweepers, and field vehicles will be travelling to and from the site on nearby roads.
HOW WILL IT IMPACT TENANTS?	<u>Possible noise and traffic issues are anticipated. All work will be performed within the fenced SWDA boundary between 8:00 AM and 5:00 PM Monday through Friday, excluding holidays.</u>


For More Information

PROGRAM CONTACTS AVAILABLE FOR PROJECT-RELATED QUESTIONS OR CONCERNS:



Tahirih Linz
BRAC PMO
Naval Station Treasure Island
33000 Nixie Way, Bldg. 50, 2nd floor
San Diego, CA 92147
(619) 524-6073
Tahirih.Linz@navy.mil

Peyton Ward
Site Mitigation and Restoration
California Department of
Toxic Substances Control
700 Heinz Avenue, Suite 200
Berkeley, CA 94710
(510) 540-3798
Peyton.Ward@dtsc.ca.gov

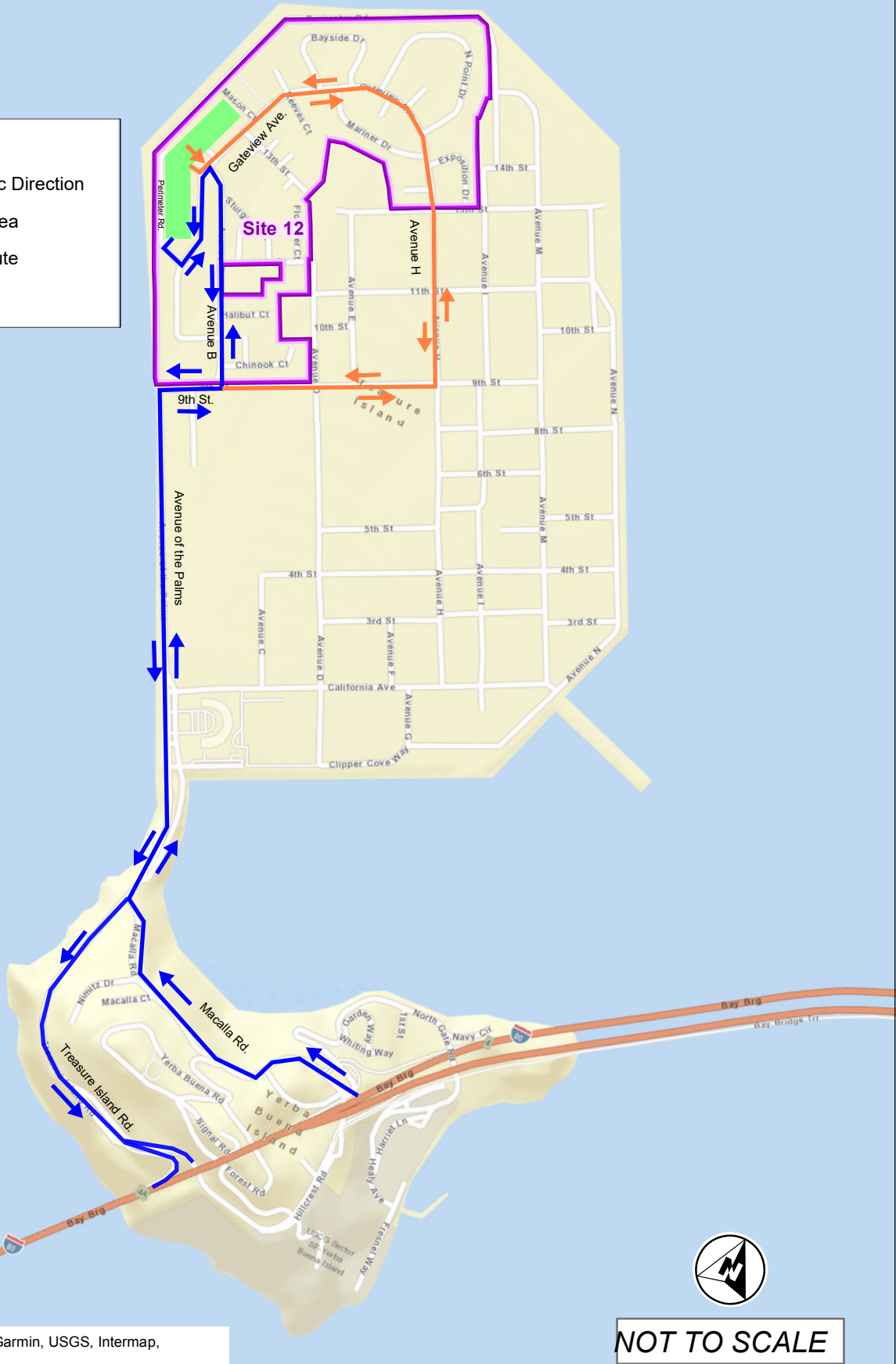


You may visit the Navy's web site www.bracpmo.navy.mil/nsti to view historical and current information, including the Work Plan for this project, and how to become a Restoration Advisory Board member.

請聯絡您的住房提供者以獲取更多資訊

Para más información, favor de contactar su proveedor de alojamiento.

- Work Area
- Truck Route / Traffic Direction
- Site 12, Housing Area
- Alternate Truck Route



Basemap Sources: Esri, HERE, Garmin, USGS, Intermap,



NOT TO SCALE



**Transportation and Disposal Activities
SWDA Westside
IR Site 12, Housing Area**

Figure 1



AVISO



Escanear para ver en
el sitio web de NAVSTA TI

Actividades de transporte y eliminación de desechos Área de eliminación de desechos sólidos de Westside Restauración de instalaciones en el sitio 12, zona de viviendas de la antigua estación naval de Treasure Island

El trabajo se realizará en las siguientes fechas:

Lunes, 15 de noviembre, 2021 – Viernes, 1 de abril, 2022 de 8:00 AM a 5:00 PM,
de lunes a viernes, excepto los días feriados

El contratista de la Marina, Gilbane, trabajará en la antigua estación naval de Treasure Island en el área de eliminación de desechos sólidos (o SWDA) en Westside Drive

¿POR QUÉ SE HACE
EL TRABAJO?

La Marina se está preparando para deshacerse del material de excavación restante removido como parte de la NTCRA y para importar material para restaurar el nivel de pre-excavación.

¿QUÉ SE HARÁ?

- El material excavado ha sido removido por cuestiones radiológicas y de municiones, y se han tomado muestras químicas para la disposición adecuada en un vertedero externo.
- Se importará material de tierra limpia para restaurar el SWDA al grado de pre-excavación.
- Se aplicarán medidas de control del polvo y de vigilancia del aire para evitar las partículas en el aire durante el transporte del material para su disposición y se aplicarán medidas de control del polvo a las reservas de material de relleno limpio importado.
- Todos los camiones que entren y salgan del recinto estarán cubiertas por una lona y marcadas con un punto verde. Los camiones también respetarán las medidas de cumplimiento de la seguridad del Departamento de Transporte de los Estados Unidos.

¿DÓNDE SE
REALIZARÁ?

Consulte el mapa adjunto a este aviso para ver las flechas azules que representan la ruta que seguirán los camiones cargados de tierra. Una ruta alternativa (en flechas rojas) representa la ruta de los camiones en caso de carreteras cerradas o bloqueadas. Se anticipa que haya ruido asociado a las alarmas de respaldo de los equipos pesados en el área de trabajo ubicada entre Gateview Avenue y Perimeter Road. Además, los equipos pesados, como los camiones de limpieza de calles y vehículos en el terreno viajarán hacia y desde el sitio por calles cercanas.

¿CÓMO AFECTARÁ
A LOS INQUILINOS?

Se anticipan posibles problemas de ruido y tráfico. Todos los trabajos se realizarán dentro del límite cercado del SWDA entre las 8:00 AM y las 5:00 PM de lunes a viernes, excluyendo los días festivos.

Cómo obtener más información

CONTACTOS DEL PROGRAMA DISPONIBLES PARA PREGUNTAS O INQUIETUDES RELACIONADAS CON EL PROYECTO:



Tahirih Linz
BRAC PMO
Estación Naval de Treasure Island
33000 Nixie Way, Bldg. 50, 2nd floor
San Diego, CA 92147
(619) 524-6073

Tahirih.Linz@navy.mil

Peyton Ward
Mitigación y restauración del sitio
Departamento de Control de
Sustancias Tóxicas de California
700 Heinz Avenue, Suite 200
Berkeley, CA 94710
(510) 540-3798

Peyton.Ward@dtsc.ca.gov



Puede visitar el sitio web de la Marina en www.bracpmo.navy.mil/nsti para ver información histórica y actual, incluyendo el Plan de Trabajo para este proyecto, y cómo convertirse en miembro de la Junta Consultiva de Restauración.
請聯絡您的住房提供者以獲取更多資訊 Para más información, por favor comuníquese con su proveedor de alojamiento.

- Área de trabajo
- Ruta de camiones / dirección del tráfico
- Sitio 12, Zona de Viviendas
- Ruta alternative de camiones



NO ESTÁ A ESCALA

Fuentes para el mapa: Esri, HERE, Garmin, USGS, Intermap,



**Field Support Activities
SWDA Westside
IR Site 12, Housing Area**

Figura 1



通知



請掃描二維碼造訪

金銀島海軍基地 (NAVSTA TI) 網站

運輸和處理活動 固體廢物處理區西側 12 號安裝修復現場，前金銀島海軍基地住宅區

施工時間為

2021 年 11 月 15 日，週一——2022 年 4 月 1 日，週五，上午 8 點
至下午 5 點，
週一至週五，節假日除外

海軍承包商 Gilbane 將在前金銀島海軍基地的固體廢物處理區 (Solid Waste Disposal Area, SWDA) 的西側車道上
進行施工

施工原因？

海軍正準備處理剩餘的根據非緊急清理行動 (Non-Time Critical Removal Action, NTCRA) 移
除的挖掘物，並運進材料以恢復至挖掘前的等級。

工作內容？

- 由於放射性和彈藥問題，挖掘物已被清除；並進行化學採樣，以便在場外填埋場妥善處理。
- 運進乾淨的土料以將 SWDA 恢復至挖掘前的等級。
- 在處理物料運輸過程中，將實施粉塵管控和空氣監測，以防止產生空氣懸浮微粒。此外，將對運進的乾淨填料堆積物實行粉塵管控措施。
- 所有進出場地的卡車都將覆蓋防水布並用綠點做標記。卡車須遵守美國運輸部 (US Department of Transportation) 的安全合規 (Safety Compliance) 措施。

施工地點？

請檢視本通知隨附的地圖，地圖中的藍色箭頭表示大型土料運輸卡車的行駛路線。備用路線（紅色箭頭表示）指的是道路關閉或封閉時卡車的行駛路線。預計在 Gateview 大道和 Perimeter 路之間的施工區域會出現重型設備備用警報產生的噪音。此外，街道清掃車、工程車輛等重型設備將透過施工場地附近的道路進出施工場地。

會對住戶造成哪些影響？

可能會產生噪音和造成交通問題。所有工作將在 SWDA 的圍欄區域內開展，時間為週一至週五，上午 8 點至下午 5 點，節假日除外。

瞭解更多資訊

如有項目相關疑問或擔憂，請聯絡項目負責人：



Tahirih Linz
BRAC PMO
Naval Station Treasure Island
33000 Nixie Way, Bldg. 50, 2nd floor
San Diego, CA 92147
(619) 524-6073
Tahirih.Linz@navy.mil

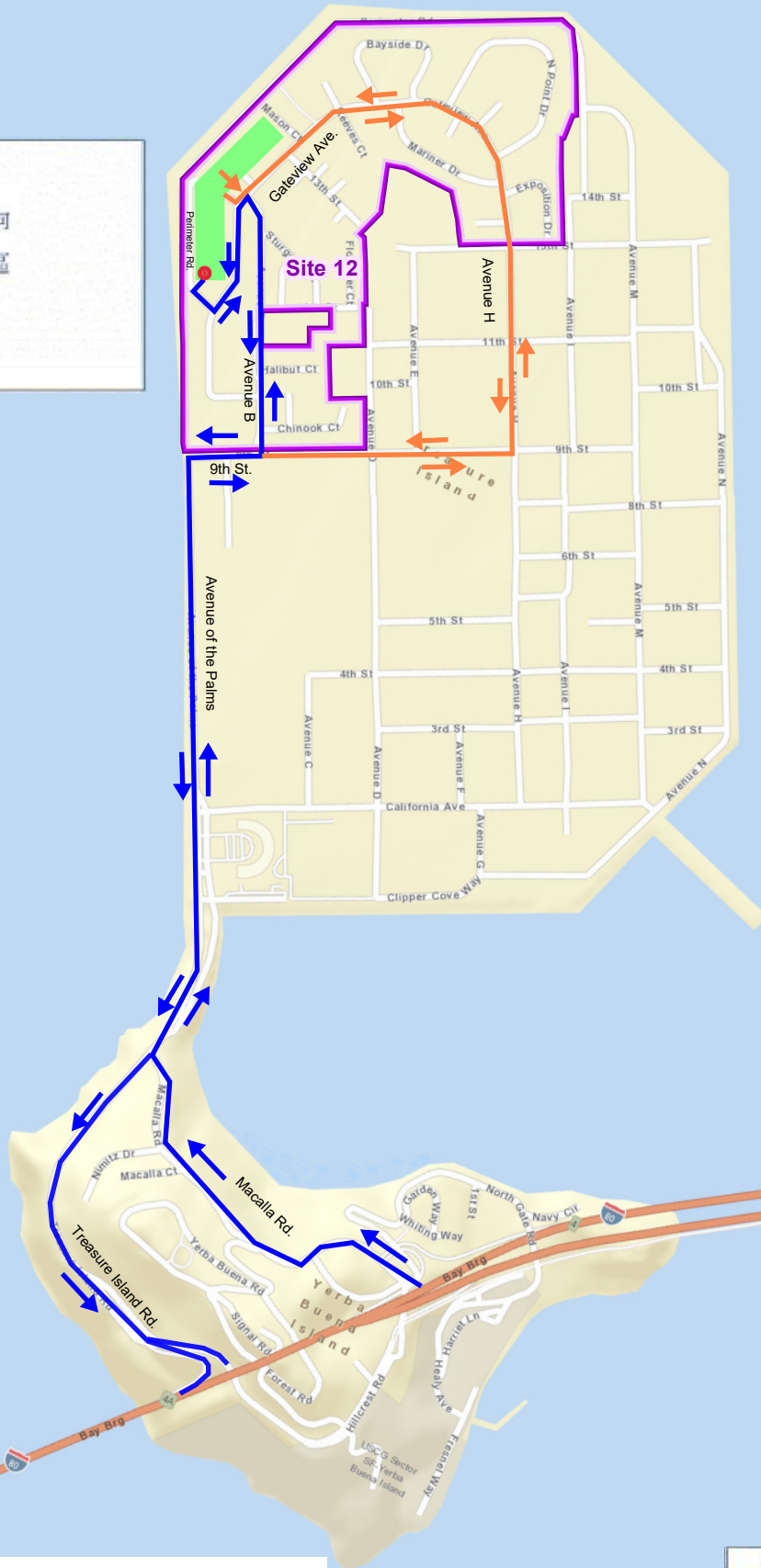
Peyton Ward
Site Mitigation and Restoration
California Department of
Toxic Substances Control
700 Heinz Avenue, Suite 200
Berkeley, CA 94710
(510) 540-3798
Peyton.Ward@dtsc.ca.gov



您可前往海軍網站 www.bracpmo.navy.mil/nsti 以瞭解歷史或最新資訊，包括關於該項目的工作計劃，以及成為重建顧問委員會成員的資訊。

請聯絡您的住房提供者以獲取更多資訊 Para más información, favor de contactar su proveedor de alojamiento.

- 施工區域
- 卡車路線/交通方向
- 12 號場地、住宅區
- 備用卡車路線



未按比例尺

施工草圖來源: Esri, HERE, Garmin, USGS, Intermap,



現場支援活動
SWDA 西側
12 號安裝修復現場住宅區

Figure 1



You are invited to the Navy's next
Restoration Advisory Board Meeting
Wednesday, December 8th
at 7:00 p.m.

Presentation Topic: 2021 Look Back & 2022 Look Ahead
at Navy's Environmental Program

Q&A Topic: Munitions at Former NSTI

Held Virtually on Microsoft Teams

(Closed Captioning Available)

For Restoration Advisory Board meeting details,
Click the Meeting Materials tabs at

<https://www.bracpmo.navy.mil/nsti>

To receive only electronic copies of future mailings and be added to the Navy's
website mailing list, please email Tahirih Linz, the Navy BRAC Environmental
Coordinator

Tahirih.p.linz.civ@us.navy.mil

請聯絡您的住房提供者以獲取更多資訊

Para más información, favor de contactar su proveedor de
alojamiento

Postage



Ms. Tahirih Linz
BRAC Environmental Coordinator
Navy BRAC Program Management Office West
33000 Nixie Way, Building 50
San Diego, CA 92147



SEE INSIDE FOR INFORMATION ABOUT NAVY MUNITIONS AT FORMER NAVAL STATION TREASURE ISLAND

Approved for public release: distribution unlimited



Former Naval Station Treasure Island San Francisco, California Munitions Fact Sheet

December 2021



Introduction

The Department of the Navy has developed this fact sheet to provide an update on cleanup at Site 12 and to communicate information on expanded munitions response site (MRS) boundaries in the Westside and Bayside SWDAs (Solid Waste Disposal Areas) to account for recently discovered munitions buried several feet below the surface. All munitions were found in areas of the SWDAs that were inaccessible to the public at the time of discovery.

Key Information to Know

- As cleanup work progressed between 2007 and 2017, munitions were found in the Westside and Bayside SWDAs.
- Based upon these findings, portions of the SWDAs were defined as Mmunition Response Sites.
- An MRS is an area requiring safety precautions for soil excavation within the Westside and Bayside SWDAs.
- Over the past nine months, the Navy screened excavated soil at Westside SWDA and encountered additional munitions. This led the Navy to conduct additional historical research and adjust the boundaries of the Mmunition Response Sites.
- To date, the Navy has encountered 303 munitions-related items. Of these, approximately 90% were determined to have no explosives. The remaining items were safely detonated per approved procedures.
- No munitions have been recovered outside of the SWDAs, and there is no evidence to indicate munitions were disposed or transported elsewhere on the island.
- Residential dig restrictions are in place as a safety precaution to prevent contact with potential contamination remaining in soil at Site 12 and also prevents contact with any munitions.

What are Munitions?

Military Munitions are ammunition products and components produced for, or used by, the military for national defense and security. *Ammunition* is the material that is either fired, scattered, dropped, or detonated from a weapon or weapon system. Common examples include projectiles of various sizes, hand grenades, and mortar rounds (see image below).

These types of larger munitions are the focus of the investigations at Former Naval Station Treasure Island (NSTI) and described in this fact sheet. Small arms munition, such as a bullet and gunpowder in a casing, have less explosive hazard and are not included in the munition items count.





Former Naval Station Treasure Island San Francisco, California Munitions Fact Sheet

December 2021



Most munitions include a fuze or primer that triggers the explosives in a munition. When a munitions item is located during fieldwork, the Navy inspects it to assess if any explosive component remains. Most recovered munitions at former NSTI are empty cartridge casings (no explosive component left) associated with anti-aircraft guns (40mm as shown in Photograph 1) used on Naval vessels during World War II (WWII).

Material Documented as Safe (MDAS) is a munitions item that has been assessed and documented as not containing explosives.

Munitions and Explosives of Concern (MEC) is a term used to describe discarded or used military munitions that could potentially contain explosive material and pose an explosive hazard.



Photograph 1: 40mm Rounds

History of Munitions Storage & Disposal at Former Naval Station Treasure Island

Storage of munitions is common on military bases, including, for a short time, at former NSTI. Munitions storage at former NSTI was associated with activities in support of WWII. From 1942 to 1944, the Navy constructed 21 ammunition bunkers at the north end of NSTI within Site 12. An ammunition bunker is designed to securely store explosive items and contain any internal explosions. From 1944 to 1946, the Ammunition Facility at NSTI was used for loading and unloading munitions to or from ships.



Photograph 2: Example of an ammunition bunker

Following the surrender of Japan in 1945, NSTI became a major disembarkation point for returning marines and sailors. It is likely this led to disposal of WWII-era munitions in the SWDAs at NSTI. The Ammunition Facility was decommissioned in 1946 and munitions operations at NSTI ceased. Decommissioning involved the relocation of munitions to other facilities for future use and, by 1948, all ammunition bunkers were documented as converted to other storage uses.



Former Naval Station Treasure Island San Francisco, California Munitions Fact Sheet

December 2021



Previous Westside SWDA Munition Cleanup Actions

Based on the Navy's historical research and investigations conducted to date, waste from NSTI operations and activities were primarily discarded in SWDAs. Areas of munitions disposal are specifically identified as Munition Response Sites within the Navy cleanup program.

During previous Navy investigations, a primary objective was removing chemical contamination and debris by excavation. This work at Westside SWDA was first conducted in 1999 as a Time Critical Removal Action (TCRA) for lead in soil. No munitions items were recovered during this action.

Between 2007 and 2014, additional excavation work at Westside SWDA continued as Phase I of a Non-Time Critical Removal Action (NTCRA). Rubbish (trash) and contaminated soil was removed in one large area of approximately 2 acres. Nineteen MDAS items were found, which led the Navy to determine that there was potential for finding additional munition items.

Munitions experts established an MRS, followed strict safety protocols, excavated, and screened soil from the MRS for MEC. Three additional munitions items were found in 2014 as Phase I excavation work was completed. A total of 22 munitions items were recovered during Phase I activities. All were determined to have no explosive hazard (in other words, the items were MDAS or inert).

Phase II of the NTCRA involved demolition of buildings in order to continue excavation activities. No munitions items were recovered during this action.

From 2015 to 2017, Phase III NTCRA excavation activities were conducted at Westside SWDA. Four MEC items and 135 MDAS items were recovered at

Westside SWDA, almost all in a single 60 x 60-foot area that was excavated to a depth of around 16 feet below ground surface.

Previous Bayside SWDA Munition Cleanup Actions

During the Phase III NTCRA excavation activities, one MEC item and 33 MDAS items were recovered at Bayside SWDA. As a result, explosive safety protocols and dig restrictions were implemented for soil disturbing activities at Bayside SWDA, along with the establishment of a second MRS. These items were found in areas of deep rubbish burial, at depths between 7 and 11 feet below ground surface.

Approximately 80% of the Bayside MRS has been excavated to an average depth of around 7 feet.

Conclusions from the Previous Munitions Cleanup Actions

Most of the recovered munition items, approximately 90%, did not contain any explosives or pose a hazard. **Futhermore, no munitions have been recovered outside of the SWDAs, and there is no evidence to indicate munitions were disposed or transported elsewhere on the island.**

While it is not expected that munitions will be found in shallow soil or outside of the SWDAs, residential dig restrictions are in place as a safety precaution for contamination remaining in soil at Site 12.



Photograph 4: Recovered 40mm Projectile from the former NSTI MRS



Former Naval Station Treasure Island San Francisco, California Munitions Fact Sheet

December 2021



Current Phase IV NTCRA Fieldwork

During Phase IV of the NTCRA, which began in 2021, Navy munitions contractors have continued to screen soil stockpiles excavated during the earlier Phase III NTCRA at Westside SWDA. To date, an additional 27 MEC and 81 MDAS items have been recovered.

The specifics of each individual munition item found are documented and will be available on the Base Realignment and Closure (BRAC) website when the post-construction summary report (PCSR) is finalized at the end of 2022. The PCSRs for the previous three phases of work at Westside SWDA can be found in the Navy's [Administrative Record on the "Documents" page of the BRAC website](#) (full website address on page 10). The work plan, including safety procedures for the current fieldwork, is available on the BRAC website under the ["Treasure Island Residents"](#) tab. Periodic updates on former NSTI environmental projects are provided during Restoration Advisory Board meetings.

Assessing Potential Hazards

When working in an area where munitions may be encountered (an MRS), the Navy follows strict safety protocols:

- All work is performed under an Explosive Safety Submission (ESS) Plan approved by Naval Ordnance Safety and Security Activity (NOSSA).
- When a munition is encountered, qualified safety professionals assess whether it poses an explosive hazard.
- Munition items which can be determined to present no explosive hazard are documented as MDAS and disposed of.
- Munition items which cannot be determined to be MDAS are treated as MEC.
- MEC items are detonated beneath sandbags using a small explosive charge to punch a hole in the item for safe disposal.
- Additional analysis is performed to ensure remaining fragments are not an explosive hazard.
- Inert fragments are safely disposed of as scrap metal.



Photograph 3: Munitions Screening at Westside SWDA



Former Naval Station Treasure Island San Francisco, California Munitions Fact Sheet



Summary

To-date, a total of 303 munitions items (90% of which were MDAS) have been recovered within the SWDAs and disposed of during removal actions. More than three-quarters of the munition items were found deeper than 6 feet below ground surface at a single 60-foot by 60-foot location in Westside SWDA. Items found at Bayside SWDA (only 11% of total items found at Site 12 and only one of which was MEC) were in areas of deep rubbish burial between 7 and 11 feet below ground surface.

Munitions Items Found at Former NSTI			
	Total	MDAS	MEC
Westside SWDA	269	238 (88.5%)	31 (11.5%)
Bayside SWDA	34	33 (97.1%)	1 (2.9%)

Notes: % - percent out of total number of munition items found in the specific SWDA

MEC – munitions item determined to have an explosive hazard

MDAS – munitions item determined to no longer have an explosive charge or hazard

SWDA – Solid Waste Disposal Area

The majority, approximately 90%, of discarded munitions items recovered were confirmed to not pose a hazard because they did not contain explosives. The shallowest depth of an item that was assumed to have explosives was a cartridge casing found buried at a depth of around 2 to 3 feet below ground surface. However, the explosive component (i.e., primer) of this munition item could not be verified as live or inactive. This munition item was located within the fenced in area of Westside SWDA and posed no risk to public safety.

No munitions have been recovered outside of the SWDAs and there has been no evidence to indicate munitions were disposed or transported elsewhere on the island.

The Navy has conducted historical research and field investigations (i.e., soil borings and trenching) across Site 12 to identify areas that may have been used for debris disposal. Based on a review of this information, the proposed MRS boundaries for Westside SWDA and Bayside SWDA were expanded beyond locations where munitions items have been recovered to include additional adjacent areas. These areas include historical aerial photographic evidence of debris disposal during the operation of the Ammunition Facility and disembarkation activities (See adjacent munitions table). The majority of these areas have already been excavated, most typically to a depth of 4 feet below ground surface.

The new MRS boundaries will require safety precautions for any future soil excavation within the identified portions of Westside SWDA and Bayside SWDA. The proposed MRS boundaries encompass the previous boundaries in addition to the newly expanded areas that include areas of historical debris disposal.



Photograph 5: Recovered Projectile Fuze (MEC)



Former Naval Station Treasure Island San Francisco, California Munitions Fact Sheet

December 2021



Explosives Safety

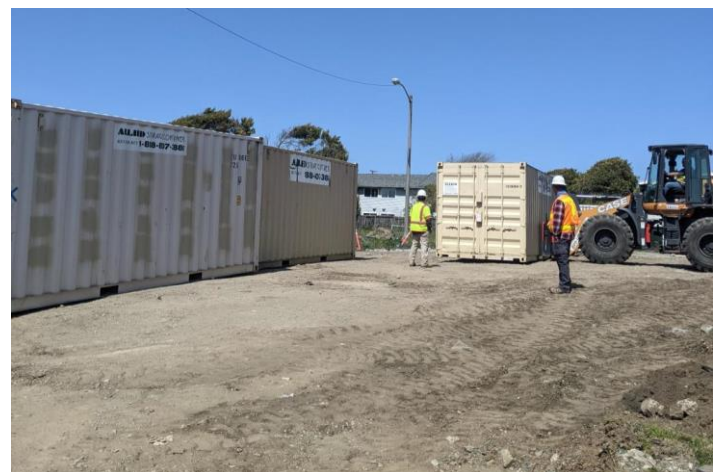
Explosive safety is a high priority of the Navy. Explosive safety measures for a specific site are established in an Explosive Safety Submission (ESS), which is reviewed and approved by the Navy explosive safety experts. The ESS is designed to provide the maximum possible protection to people and property.

A trained and qualified unexploded ordnance (UXO) Safety Officer (UXOSO) is assigned during excavation work within any Munition Response Sites. Their sole responsibility is to establish and ensure compliance with site-specific explosive safety requirements.

Prior to the start of fieldwork, an Exclusion Zone is placed around the MRS, work areas are fenced, and personnel entry is controlled. An Exclusion Zone is designed to prevent unauthorized entry of civilians for their own safety.

Specific explosive safety controls for the current Phase IV NTCRA Fieldwork include:

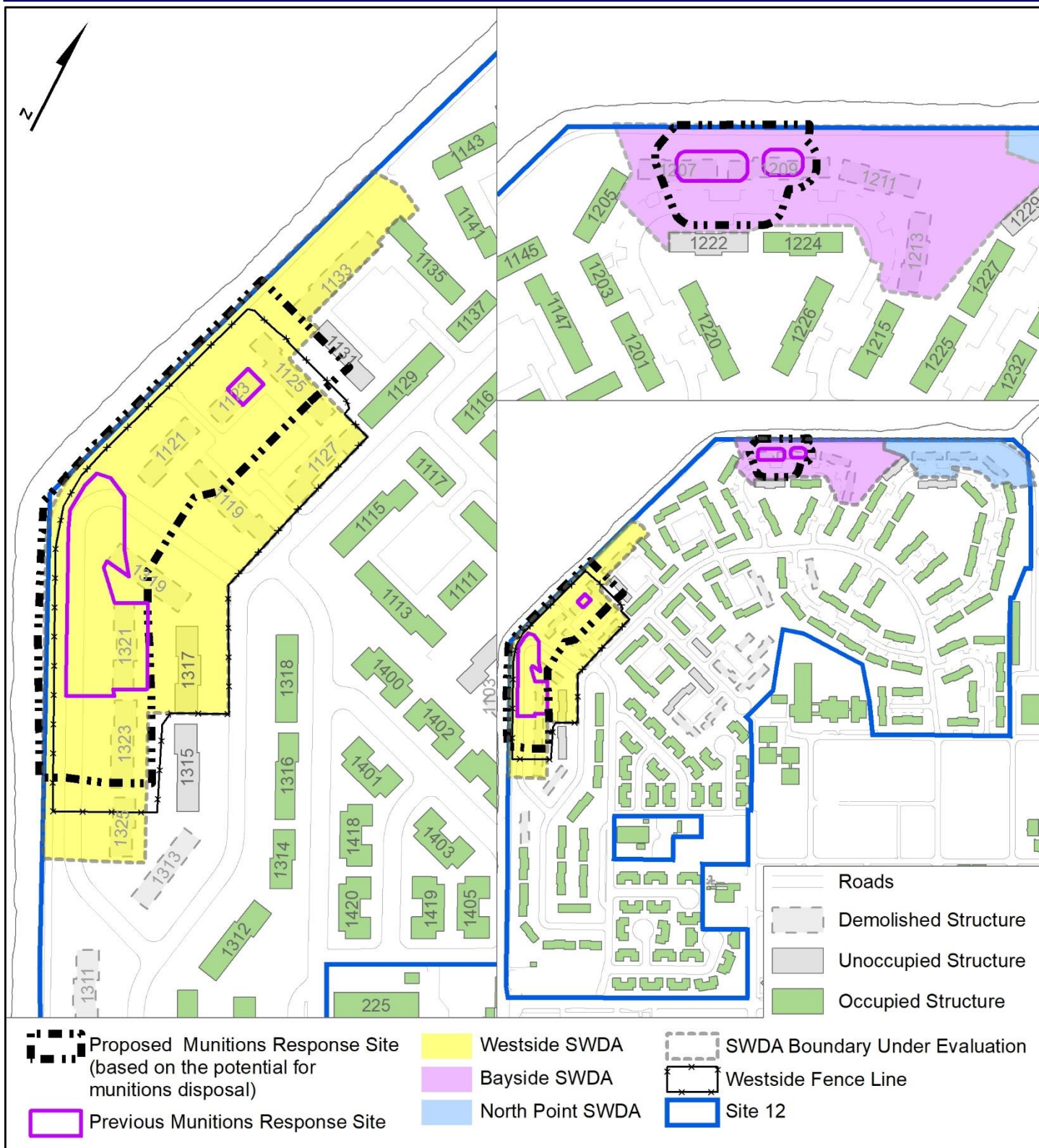
- Use of Engineering Controls that include specialized boxes to physically-obstruct potential explosives hazards. These metal shipping containers are situated between the work area and existing nearby residential structures (see photographs 6 and 7).
- Implementation of 360-degree boundaries -- or Exclusion Zones -- based on the maximum fragmentation distance (the farthest distance an explosive fragment could travel during detonation) of the largest anticipated munition item that may be encountered.
- Monitoring of Exclusion Zones by UXOSO personnel to ensure the community is protected during earthmoving activities.
- MEC is protected onsite beneath sandbags and detonated using a small explosive charge to punch a hole in the items to ensure they are safe for disposal and free of explosives.
- All methods, procedures, and safety protocols are under strict supervision by a UXOSO and Independent Third Party oversight.



Photographs 6 and 7: Engineering Controls at Westside SWDA



Proposed MRS Boundaries at Site 12





Former Naval Station Treasure Island San Francisco, California Munitions Fact Sheet

December 2021



Timeline of Munitions Fieldwork

- **2007** – Phase I excavation begins in Westside SWDA
- **2009-2012** – First munitions discovered in Westside SWDA
- **2014** – Phase I excavation completed
- **2015** – Phase III excavation begins in Westside SWDA and Bayside SWDA; additional munitions recovered in Westside SWDA
- **2016** – First munitions discovered in Bayside SWDA
- **2017** – Phase III excavation completed
- **2021** – Phase IV project (in progress) to screen and dispose of materials excavated from Westside SWDA during Phase III; additional munitions recovered. Review of historical munitions disposal conducted.
- **Today** – Revision to MRS boundaries for Westside SWDA and Bayside SWDA for future assessments and controls soil disturbing activities

Glossary of Terms:

Explosive Safety Submission (ESS): The risk management process associated with explosives activities to ensure the minimum risk to personnel, equipment/buildings, and the environment. The ESS process includes conducting and documenting a comprehensive assessment of existing and/or future potential explosion sites.

Material Documented as Safe (MDAS): A munitions item that has been assessed and documented as not presenting an explosive hazard and for which the chain of custody has been established and maintained. This material is no longer considered to be an explosive hazard.

Maximum Fragmentation Distance: The maximum distance a piece of blasted fragment can travel at a velocity that does damage and/or potential harm to individuals.

Military Munitions: All ammunition products and components produced for, or used by, the military for national defense and security. The term includes explosives, pyrotechnics, rockets, bombs, warheads, mortar rounds, artillery ammunition, grenades, mines, torpedoes, depth charges, and components thereof.

Munitions and Explosives of Concern (MEC): A classification that includes those discarded or used military munitions that pose an explosive safety hazard. If an item cannot be fully inspected and documented as MDAS, it is treated as MEC as a safety precaution.

Munitions Response Site (MRS): A discrete location on a defense site that is known or suspected to contain MEC.

Naval Ordnance Safety and Security Activity (NOSSA): Organization responsible for providing munitions safety for the Navy, which provides technical policies, procedures and design criteria associated with weapons systems safety, and manages all programmatic policy requirements the Navy Explosives Safety Program.



Former Naval Station Treasure Island San Francisco, California Munitions Fact Sheet

December 2021



Three Rs of Explosive Safety

Safety measures such as dig restrictions are in place for Site 12. While it is not expected that munitions will be found in shallow soil or outside of the SWDAS, it is important to understand the 3Rs of Explosives Safety.

To protect yourself, your family, your friends, and your community, it is important to follow the 3Rs of Explosive Safety should you know or suspect you have come across a military munition:

Recognize: When you may have come across a munition, and that munitions are dangerous.

Retreat: Do not approach, touch, move or disturb a suspected munition. Carefully leave the area.

Report: Immediately report what you saw and where you saw it to local law enforcement – call 911.

For more information on Explosive Safety, visit the Department of Defense Munition Response website at:

<https://denix.osd.mil/uxo/>

Contact Information

The Navy appreciates the cooperation of residents during ongoing work in the Housing Area.

For general information, please contact:

Ms. Tahirih Linz

Navy BRAC Environmental Coordinator

Email: Tahirih.p.linz.civ@us.navy.mil

Phone: (619) 524-6073

Ms. Peyton Ward

California Department of Toxic Substances Control

Email: Peyton.ward@dtsc.ca.gov

Phone: (510) 540-3798

To be added to the Base Realignment and Closure (BRAC) website mailing list, please email Tahirih Linz, the Navy BRAC Environmental Coordinator at tahirih.p.linz.civ@us.navy.mil.

Visit the Former Naval Station Treasure Island BRAC website for Public Notices and Restoration Advisory Board meeting details: <https://www.bracpmo.navy.mil/nsti>. Use the tabs on the left-hand side to select "Meeting Material" or "Public Notices".

THIS PAGE INTENTIONALLY LEFT BLANK.



How are we doing? We want to hear from you!

One Treasure Island is seeking resident feedback on our Nourish Treasure Island project.

Please use the QR code below to access a short 5 question survey.

We appreciate your feedback as we continue to look for ways to improve Nourish Treasure Island.

Thank you for your time.



SCAN ME



Want a job in construction?



FREE! CONSTRUCTION READINESS WORKSHOPS

	Session C
Orientation	Wednesday December 15 th @ 10:00 AM
Apprenticeship Research I	Thursday December 16 th @ 10:00 AM
Apprenticeship Research II	Friday December 17 th @ 10:00 AM

YOU MUST BE FULLY VACCINATED FOR COVID TO PARTICIPATE

PHYSICAL TEST PREP

(Wear boots if you have them and clothing you do not mind getting dirty)

Physical ability tests your ability to perform job-related tasks requiring manual labor or physical skill. The PTP will measure your physical abilities such as strength, muscular flexibility, and stamina.

APPRENTICESHIP RESEARCH I

(Bring a pen and notepad)

Apprenticeship research workshop provides an overview of the building trades and pre-requisites for each trade. Prior to entering apprenticeship training, these workshops help prepare participants to research and select three to five trades.

APPRENTICESHIP RESEARCH II

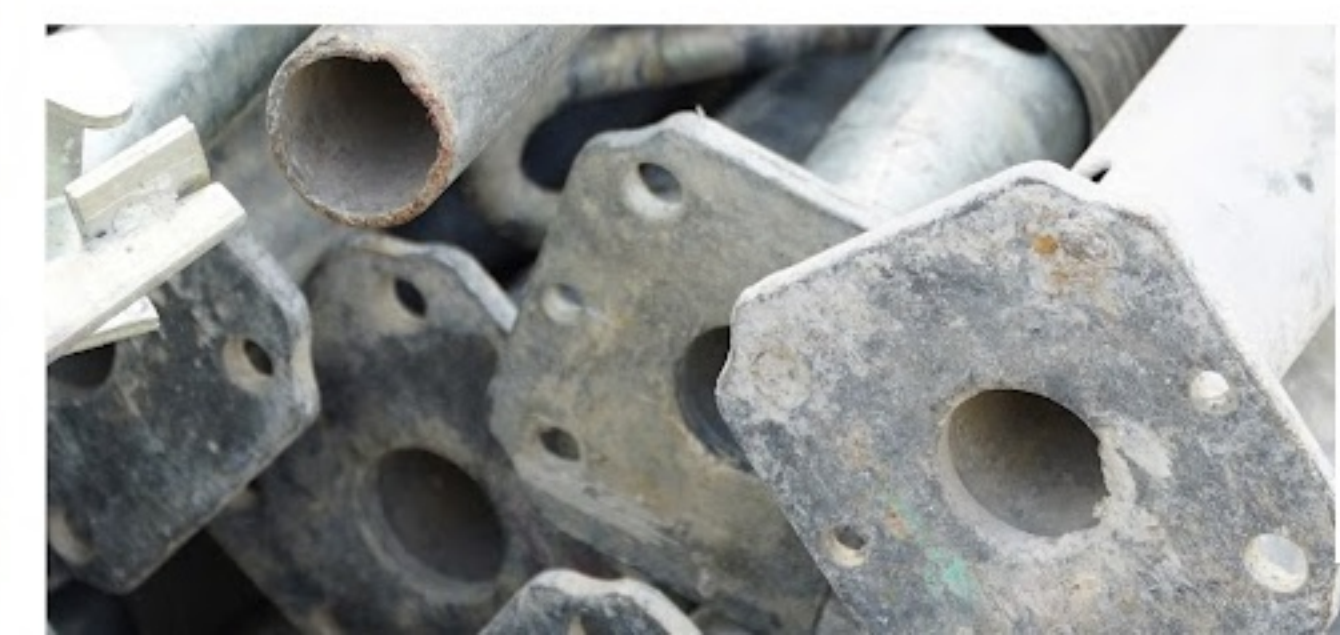
(Bring a pen and notepad)

Beyond group training sessions, we also work with individuals on a one-on-one basis to develop a customized job development plan. Once the plan is developed, we coach you with the hiring plan so it is successfully implemented.

Please contact
(415) 426-6902 to express
an interest in participating.
Or register online by scanning
the QR code.



**Treasure Island residents,
women and formerly
incarcerated individuals
strongly encouraged to apply.**





Important Announcement!



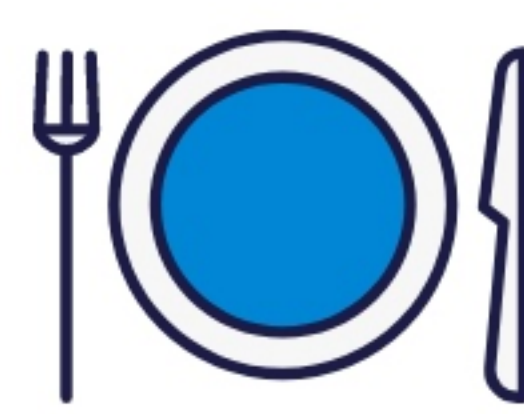
The FOOD PANTRY
will be CLOSED on:

→ **TUES DEC 28** ←

If you need assistance with food
or any other basic needs, please call the

RESIDENT SUPPORT LINE:

415-800-5937





**Win three tickets to a
Golden State Warriors game
in 2022!**

**All you have to do is complete and
submit a survey by Friday
(11/19/2021).**

How it works:

If choose to complete online version, once complete please send a screenshot of the completed survey and email it to Slewis@ymcasf.org with their name and contact information and we will add them to the raffle container.

If they complete a paper survey, once they turn it in, they will get added into our raffle container.

**SCAN
HERE!**

The survey deadline is this Friday, November 19th.

The winner will be announced on December 1st.



FLU SHOTS

AT THE TI NURSE CLINIC

WHEN: EVERY TUESDAY
(Closed Nov 30)
2:00-6:00pm



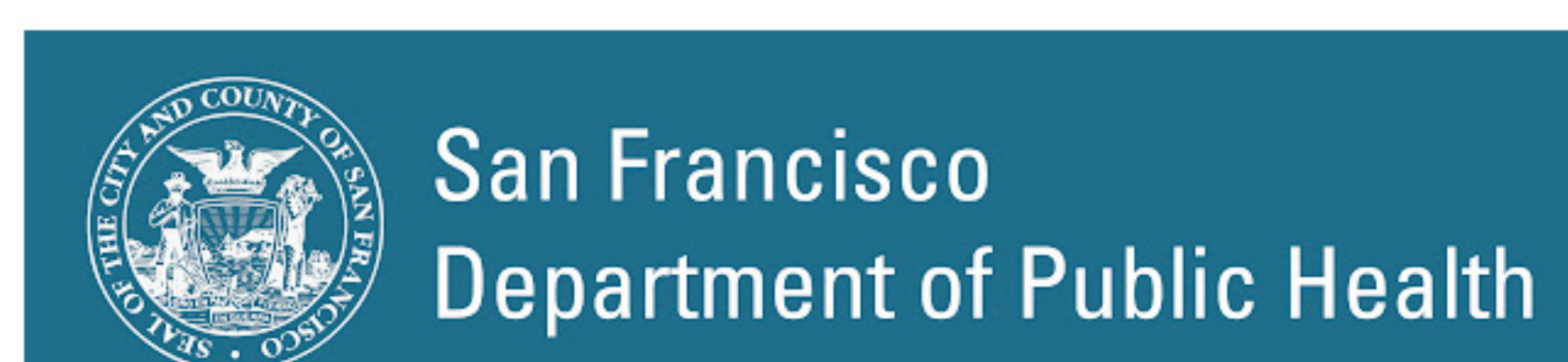
WHERE: 749 9th St. (Inside YMCA)
Enter through doors on 9th St.

WHO: Island residents 18+ years old

no appointments needed

Questions?

Call the Treasure Island RN Clinic at (415)767-2011





Nourish Treasure Island will be

CLOSED

Fri Dec 24 - Mon Jan 3

If you need assistance with food or any other basic needs, please call the

RESIDENT SUPPORT LINE:

415-800-5937

Deadline to call: Mon Dec 20

OR

Stop by the Food Pantry on Tues Dec 14,
we will be offering support





Nourish Treasure Island estará

CERRADO

Viernes Dic 24 a Lunes Enero 3

Si necesita ayuda con comida o alguna otra necesidad básica, por favor llame a

LA LÍNEA DE APOYO A RESIDENTES:

415-800-5937

Fecha límite para llamar: Lunes diciembre 20

O

Venga a la despensa de comida el martes 14 de diciembre, donde estaremos ofreciendo apoyo





Introduces...

Sandwich Saturdays!



What: No more Food Trucks!

Where: Island Cove Market
800 Avenue H, Treasure Island

When: **STARTING SAT NOV 6**
12:00-2PM

Who: Island Residents



FIRST COME, FIRST SERVED
4 SANDWICH LIMIT PER FAMILY



Interested in volunteering for \$15 an hour?
Email Chantel at cginochio@onetreasureisland.org
ADULT VOLUNTEERS ONLY PLEASE

One Treasure Island's CALL FOR VOLUNTEERS for our 2022 VITA Tax Site

Time Commitment: Every Thursday Evening
February - April 2022
From 4:00-8:00pm

Location: Ship Shape Community Center
850 Avenue I, Treasure Island

**We are particularly interested in MALE volunteers.*

If you or someone you know is interested,
please contact Sherryl Hairston at:
415-426-6903





Important Announcement!



One Treasure Island
will be enforcing the local
San Francisco County Covid
Vaccination policy and guidelines

→ **Effective immediately** ←

This means that to come inside our Facility,
(Ship Shape) you **MUST** be fully Vaccinated.
This applies to **EVERYONE** who wants services.

In order to join our
Construction Training Program
beginning in February 2022,
EVERY PARTICIPANT MUST BE FULLY VACCINATED.

Should you decide **NOT** to get vaccinated, **you are still eligible for services.**
(Not Construction) Please understand that for safety reasons, we will assist
you virtually, on the phone or in person, outside in the parking lot. Please
continue to make appointments in lieu of dropping in unannounced.