



San Francisco Health Network
Laguna Honda Hospital
and Rehabilitation Center

Laguna Honda Hospital Executive Team Report

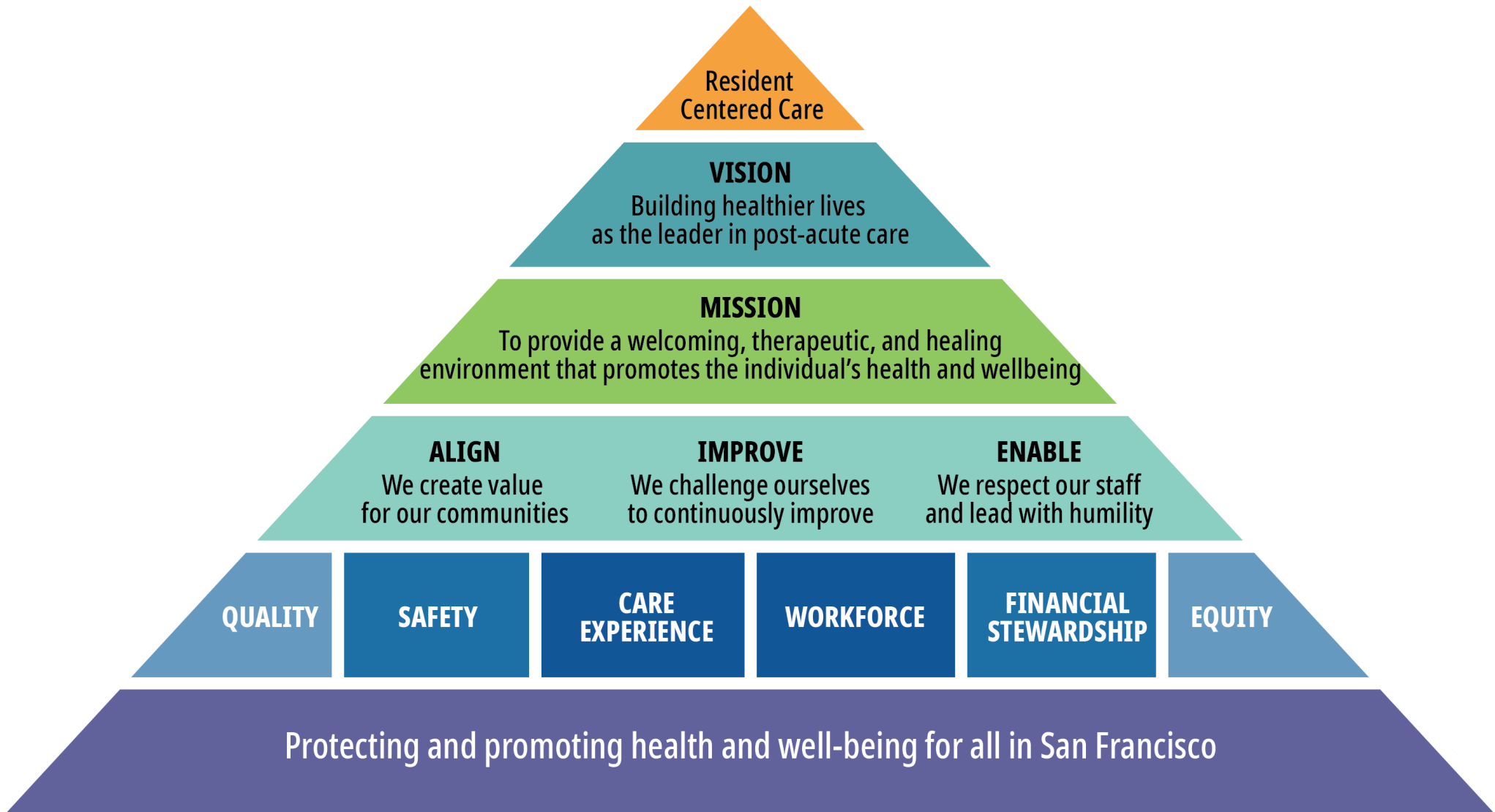
Michael T. Phillips, MHA, FACHE
October 12, 2021



San Francisco Department
of Public Health



San Francisco Health Network Laguna Honda Hospital and Rehabilitation Center



OCTOBER 2021 Updates

SAFETY

Pages 4 to 9

- COVID-19 Update
- COVID-19 Cases at Laguna Honda
- COVID-19 Vaccine Updates
- Influenza and COVID-19 Booster Campaigns

CARE EXPERIENCE

Page 10

- State of the Hospital

WORKFORCE

Page 11

- Employee of Month of Recognition – Rita Ng, Medical Social Worker in the Social Work Department

EQUITY

Pages 12 to 13

- Department of Equity and Culture Updates
- Latina/o/x/e Heritage Month

SAFETY



COVID-19 Update

- COVID-19 response remains one of our highest priorities.
- Due to our low positivity rate and high vaccination rate, effective October 4, 2021, the staff testing cadence was reduced from twice weekly to once weekly.

Staff and Resident Cases				
	Total Confirmed Positive Cases	Recovered Cases	Active Cases	Deaths
Staff	217	214	3	0
Residents	63	57	0	6
Total	280	271	3	6

Data as of 10/4/2021



SAFETY



COVID-19 Cases at Laguna Honda

- The surge in staff COVID-19 cases driven by the Delta variant appears to have subsided; LHH identified three total cases in September.

	Resident	Staff	Grand Total
Total 2020 Cases	46	129	175
Jan 2021	17	36	53
Feb 2021	0	5	5
March 2021	0	1	1
April 2021	0	2	2
May 2021	0	1	1
June 2021	0	2	2
July 2021	0	21	21
August 2021	0	17	17
September 2021	0	3	3
Total	63	217	280

Data as of 10/4/2021



SAFETY



COVID-19 Vaccine Mandate for Healthcare Workers

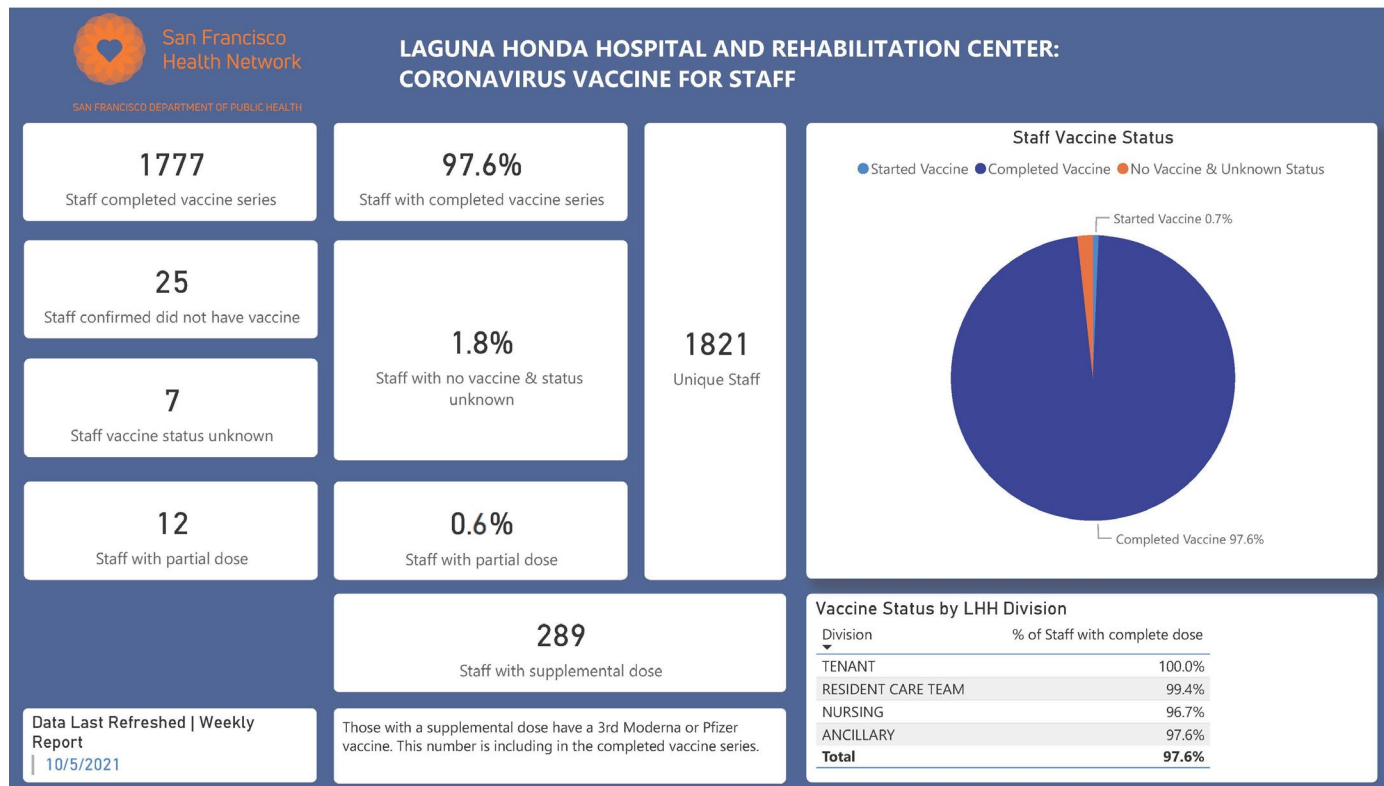
- On September 30, 2021, the California Department of Public Health vaccine mandate went into effect. All healthcare employees were required to have their first dose of a one-dose regimen or their second dose of a two-dose regimen by the deadline.
- City employees who remain out of compliance have been placed on paid administrative leave until their due process hearing takes place. A decision will be made by a third-party hearing officer regarding the employee's dismissal from their position based on their failure to comply.
- **LHH has strongly supported vaccinations through education on the safety and efficacy of the vaccine and accessibility by providing the vaccine on campus.**
- We are mitigating the impacts any reduction in our workforce might have and are fortunate to have over 98 percent compliance.



SAFETY



COVID-19 Vaccine Update for Staff



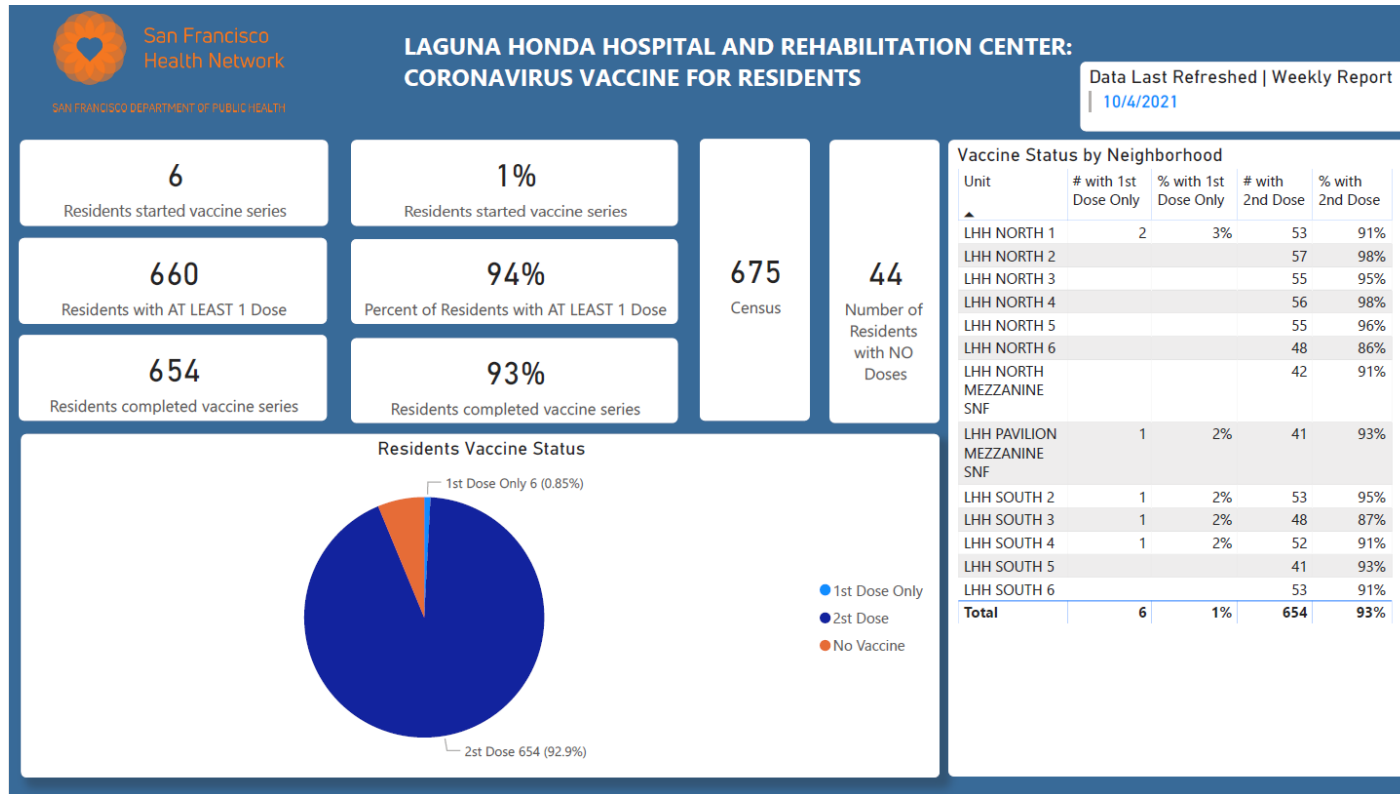
Data as of 10/1/2021



SAFETY



COVID-19 Vaccine Update for Residents



Data as of 10/1/2021



SAFETY



COVID-19 Vaccine Pfizer Boosters and Influenza (Flu) Vaccines

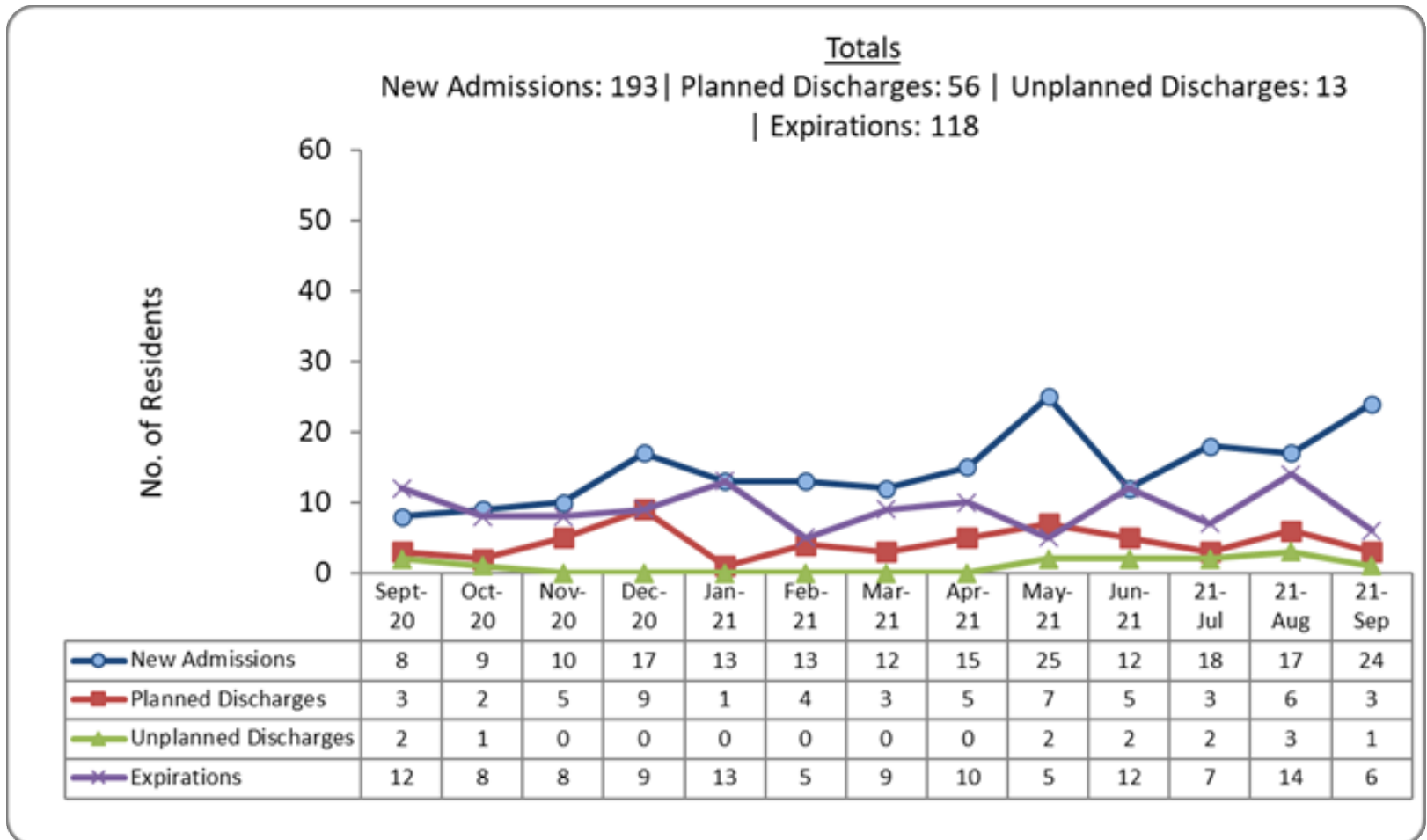
- **All Laguna Honda residents and employees who received the Pfizer vaccine at least six months ago are now eligible for booster doses.**
- Staff boosters began on Monday, October 4, 2021, in our Wellness Hub. Staff have the option to receive the flu and COVID-19 boosters at the same time. Like past years, the flu vaccine is mandated by October 30th for healthcare workers.
- For symptom monitoring and observation purposes, resident COVID-19 and flu vaccines will be staggered. During the week of October 12th, the North Tower begins boosters, and the South Tower begins the flu vaccine. During the week of October 18th, the South Tower begins boosters, and the North Tower begins the flu vaccine.



CARE EXPERIENCE



State of the Hospital – Admissions, Discharges, and Expirations



WORKFORCE



Employee of the Month Recognition: Rita Ng, Medical Social Worker in the Social Work Department

- Rita began her career with LHH in 1987. We celebrate her decades long dedication to our families and residents and thank her especially for the ways in which she supported our Chinese-speaking LHH community during the pandemic.
- Rita translates resident communication into Chinese and recorded the daily resident COVID-19 hotline for many months. She also schedules all the family visits for her units.
- North 5 shared that Rita is compassionate, patient, and respectful. They added that she has wonderful skills in communication and customer service, and that she works hard to meet residents' needs.



EQUITY



Department of Equity and Culture Updates

- Continued participation in the Anti-Racism Fellowship
 - Ten LHH fellows participating in the current cycle
 - Current focus: Anti-Racist Organizational Assessment and Transformation
- Racial Equity Action Council and workgroups monthly meetings
- Soliciting LHH participation in the DPH Racial Equity Champions program
 - Thus far, 14 LHH staff members have applied



EQUITY



Latina/o/x/e Heritage Month

- In recognition of Latina/o/x/e Heritage Month, LHH hosted a presentation and dialogue with Dr. Ritchie Rubio on *The Search for a More Inclusive Name*; 40 participants attended.

The Search for a more Inclusive Name

What? We are inviting you to a conversation and reflection on the use of Latina/o, Latinx, Latine, and Hispanic as pan-ethnic names to refer to people from the Latin American community, as this has vast implications in terms of how we communicate and represent, on a system-level and in our engagement with clients/patients, their families, and the community.

When? October 5 (Tuesday) from 12 noon to 1 pm.

How? Join this Zoom virtual meeting. Link to join will be sent separately.

Who? This conversation will be facilitated by Ritchie Rubio from SFDPH

Thank you and I look forward to seeing you.





San Francisco Health Network Laguna Honda Hospital and Rehabilitation Center



PHOTO CREDIT: HEIDI ALLEZHAUSER PHOTOGRAPHY