



San Francisco
Health Network

SAN FRANCISCO DEPARTMENT OF PUBLIC HEALTH

Jail Health Services

Lisa A. Pratt, MD, MPH
Director / Medical Director
Jail Health Services

July 20, 2021

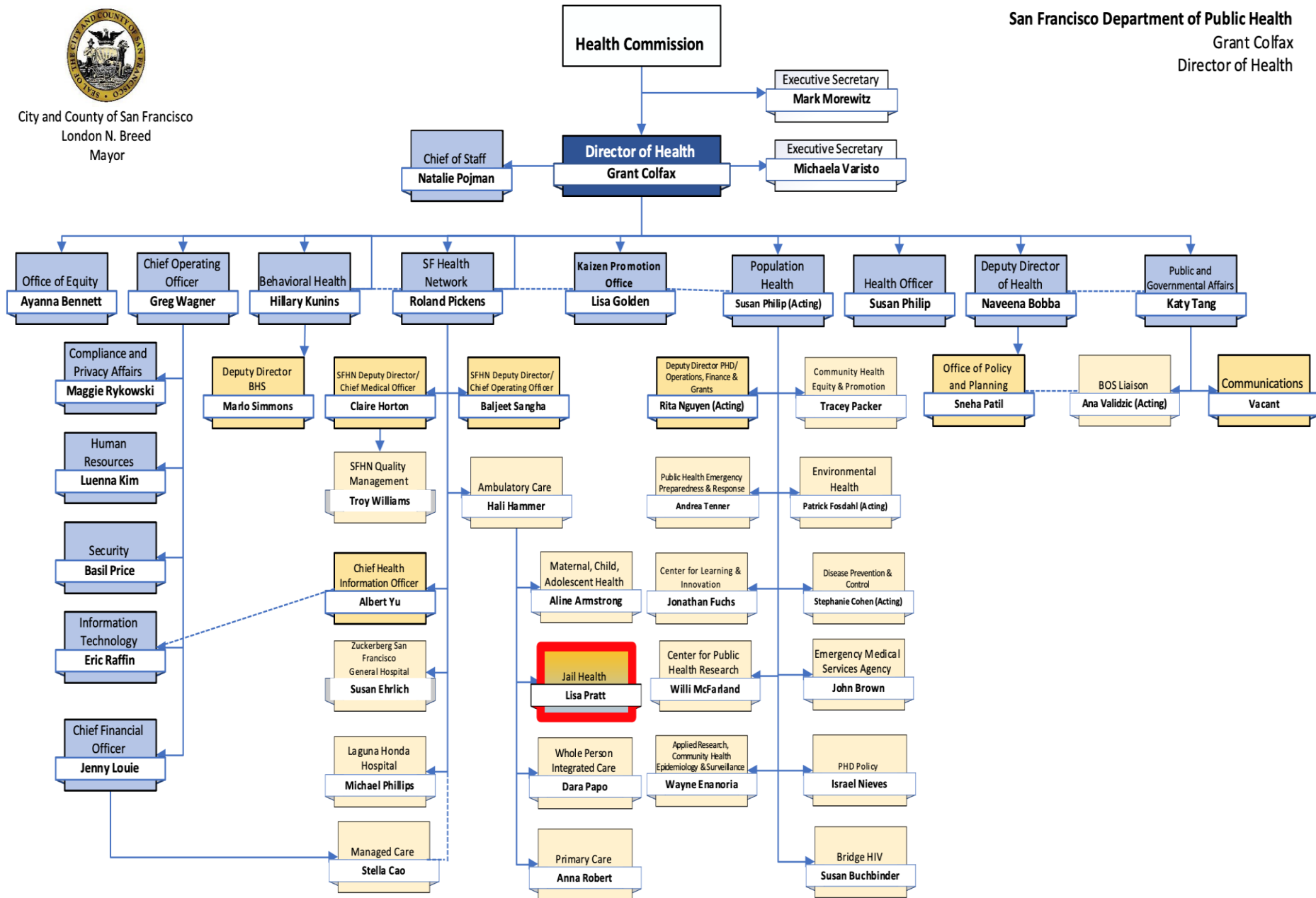


- Overview of Jail Health Services
- Incarceration as a public health issue
- Demographics of San Francisco's jail population
- Response to COVID-19
 - Testing
 - Vaccination



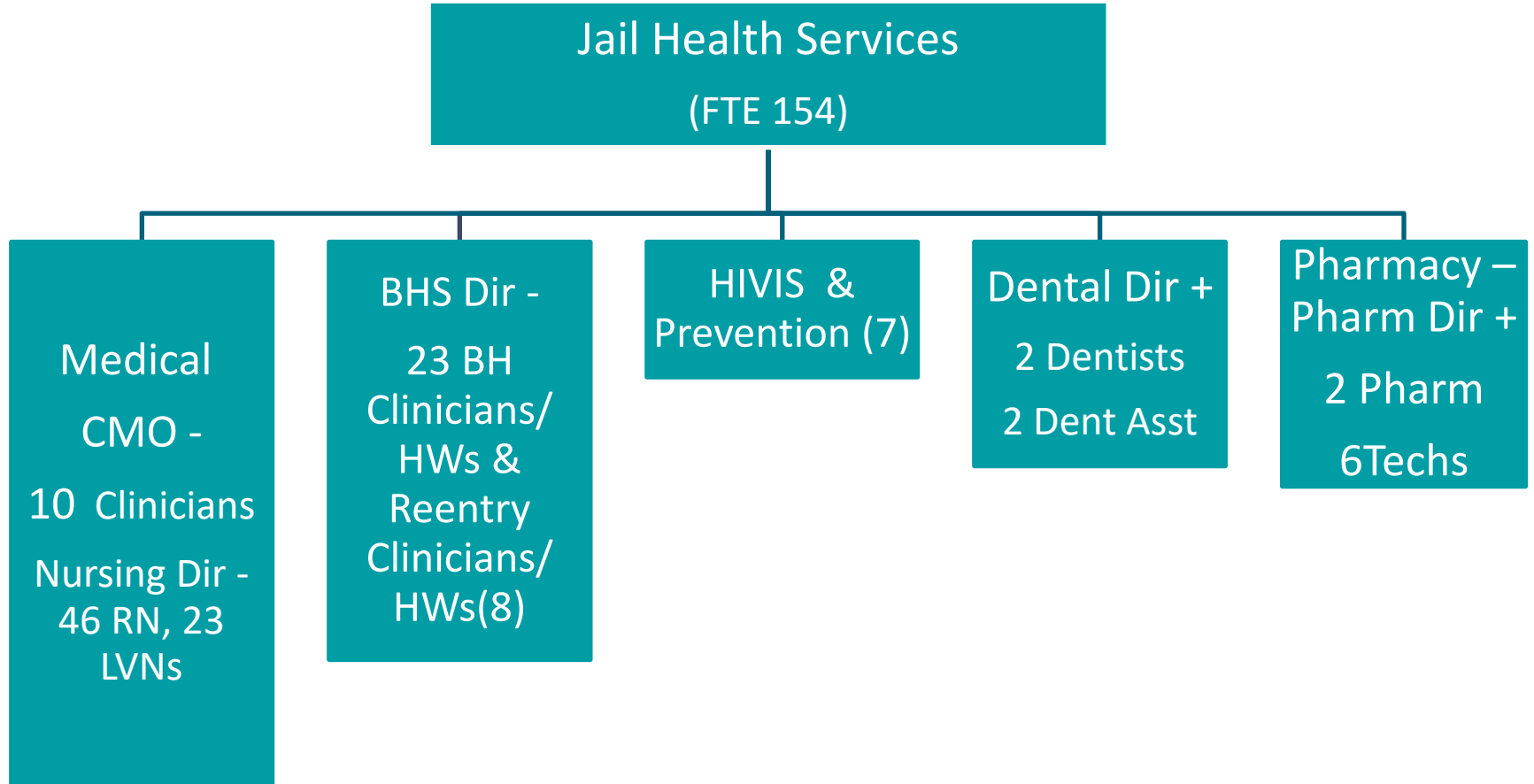
City and County of San Francisco
London N. Breed
Mayor

San Francisco Department of Public Health
Grant Colfax
Director of Health





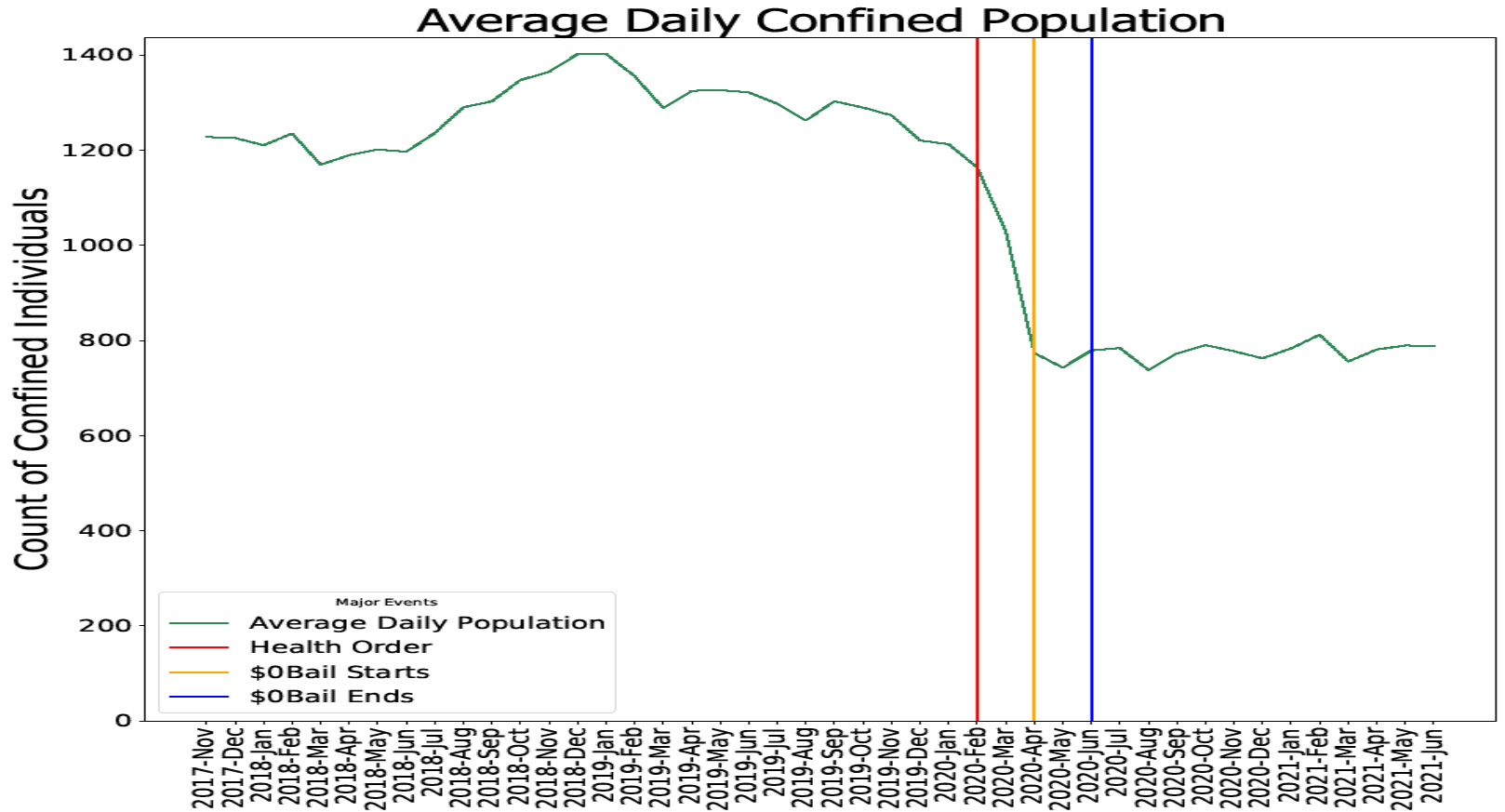
JHS Organizational Structure





Incarceration as a Public Health Issue

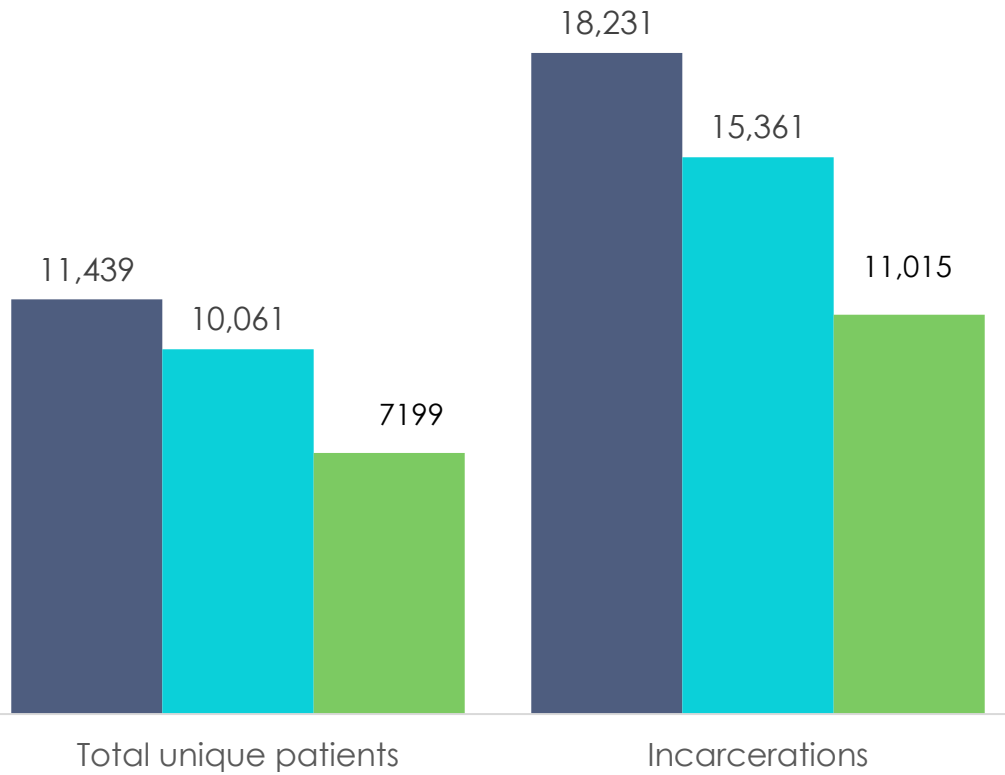
- Health Commission resolution adopted on March 24, 2019
- DPH demonstrates critical role of public health to prevent criminal justice involvement and address its negative effects
- Social, economic and environmental determinants of health predict criminal justice involvement
- Criminalization of race, homelessness and poverty, substance use disorders and mental illness leads to incarceration



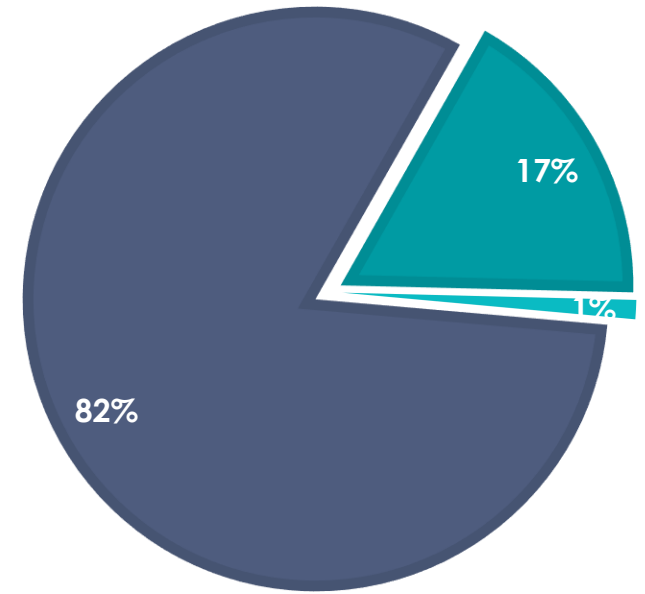


Jail Population 2018-2021

■ FY18-19 ■ FY19-20 ■ FY20-21



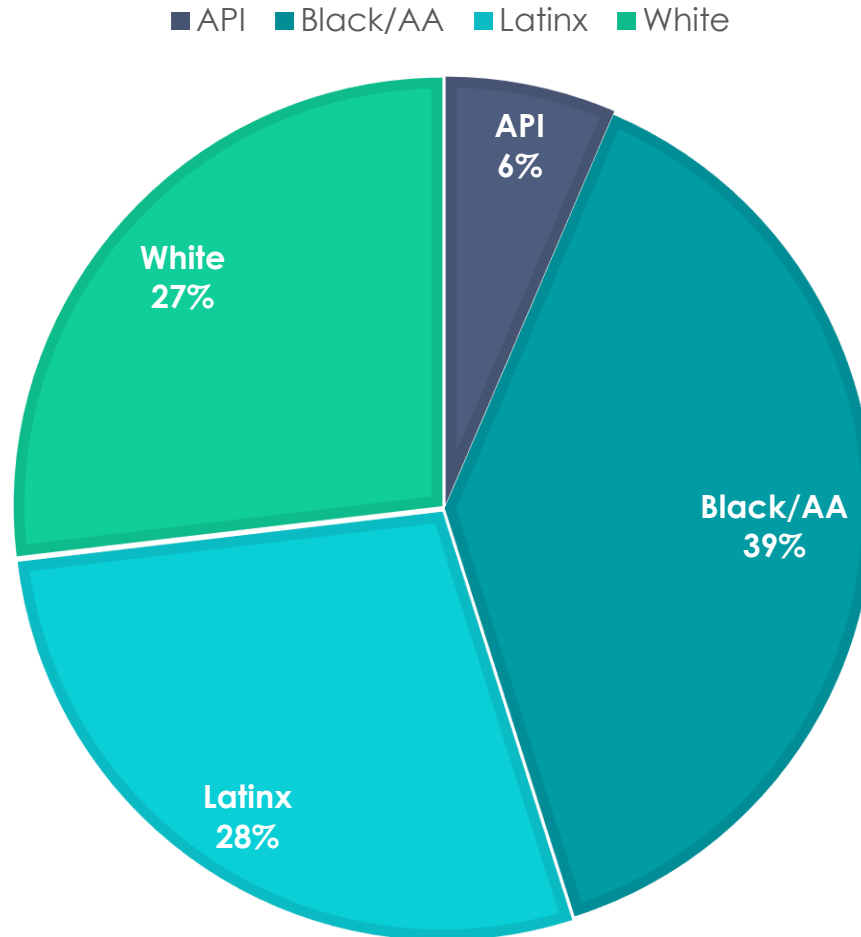
■ M ■ F ■ GQ/TGNB



FY20-21



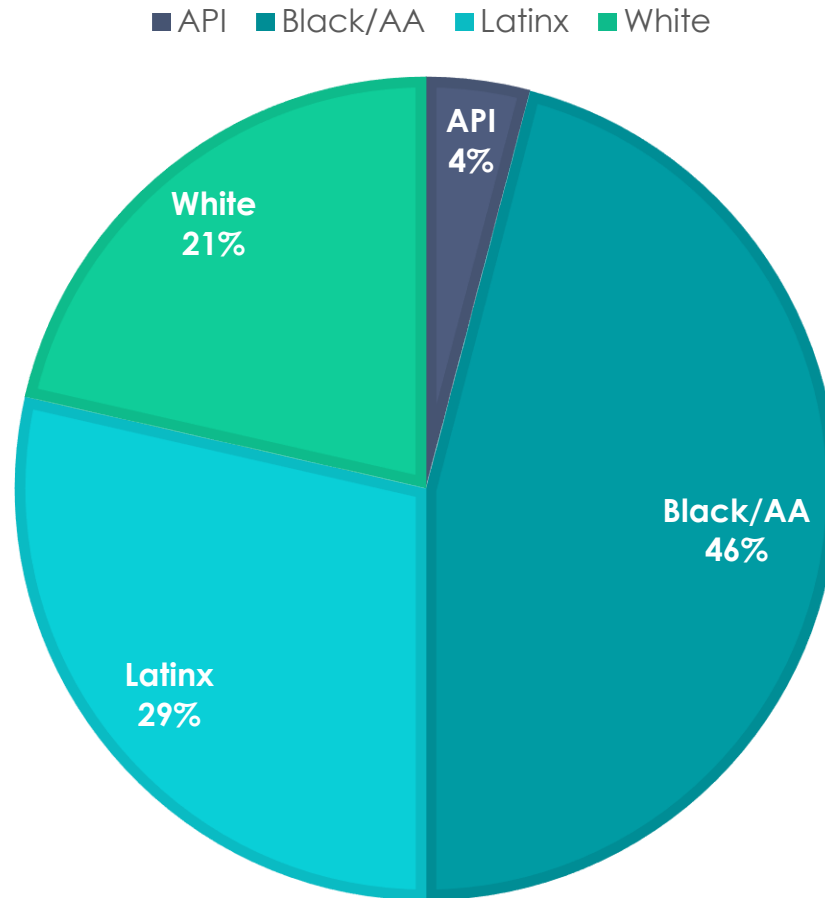
Race/Ethnicity Booking FY 20-21





Race/Ethnicity

Point in Time 5.20.21





People in custody throughout US:

Dangerous conditions, dire consequences

America's prisons, jails and detention centers have been among the nation's most dangerous places when it comes to infections from the coronavirus. Over the past year, more than 1,400 new inmate infections and seven deaths, on average, have been reported inside those facilities each day.

New York Times, April 10, 2021



Covid Outcomes in the Jail

Among Incarcerated People in SF:

- 161 people who tested positive for COVID:
 - No COVID deaths
 - No COVID hospitalizations
 - No in-jail transmission of COVID



JHS and Sheriff's Office Partnership

- Staff and patient education
 - Hand washing, masking, distancing, symptoms
- Jail closed to all non-essential personnel
- Symptom screening and temp checks for all
- Masking requirement for all staff (JHS, SFSO) and incarcerated people
- Increased cadence of cleaning/sanitizing facilities



COVID Safety Strategies

- Identify and mitigate risk to incarcerated people
 - Test all people at booking – April 12, 2020
 - Rapid turn-around-time essential for quick isolation
 - Designate isolation and quarantine housing at entry and test at day 5/day 10
 - Cohort medically vulnerable
- Identify and mitigate risk imposed by staff
 - Mandatory testing of all staff and workers entering the jail – pursuant to a Health Officer order, testing began March 29, 2021
 - Mandatory vaccination order for staff issued July 8, 2021



Creating Safe Places

Decrease population density

- Move incarcerated people to all available locations with single cell where possible
- Work with criminal legal partners to reduce jail population –
 - Police Depts, District Attorney, Public Defender, Court, Adult Probation, Pre-Trial Services



Open Dorm Pods





Covid Isolation Cells



Chronicle / Paul Chinn



Safety and Justice Challenge

- Grant from MacArthur Foundation to DA's office
- Goal: reduce jail population by 17% (1250 ->1044)
- Strategies:
 - **Reduce** time to treatment (1 2930 staff person in JHS Reentry)
 - **Reduce** case processing time
 - **Reduce** case resolution time
 - Identify & prioritize **HUMS/Shared Priority** patients for review/expedited processing
 - Create cross-system education to facilitate allowable **data sharing/collaboration**

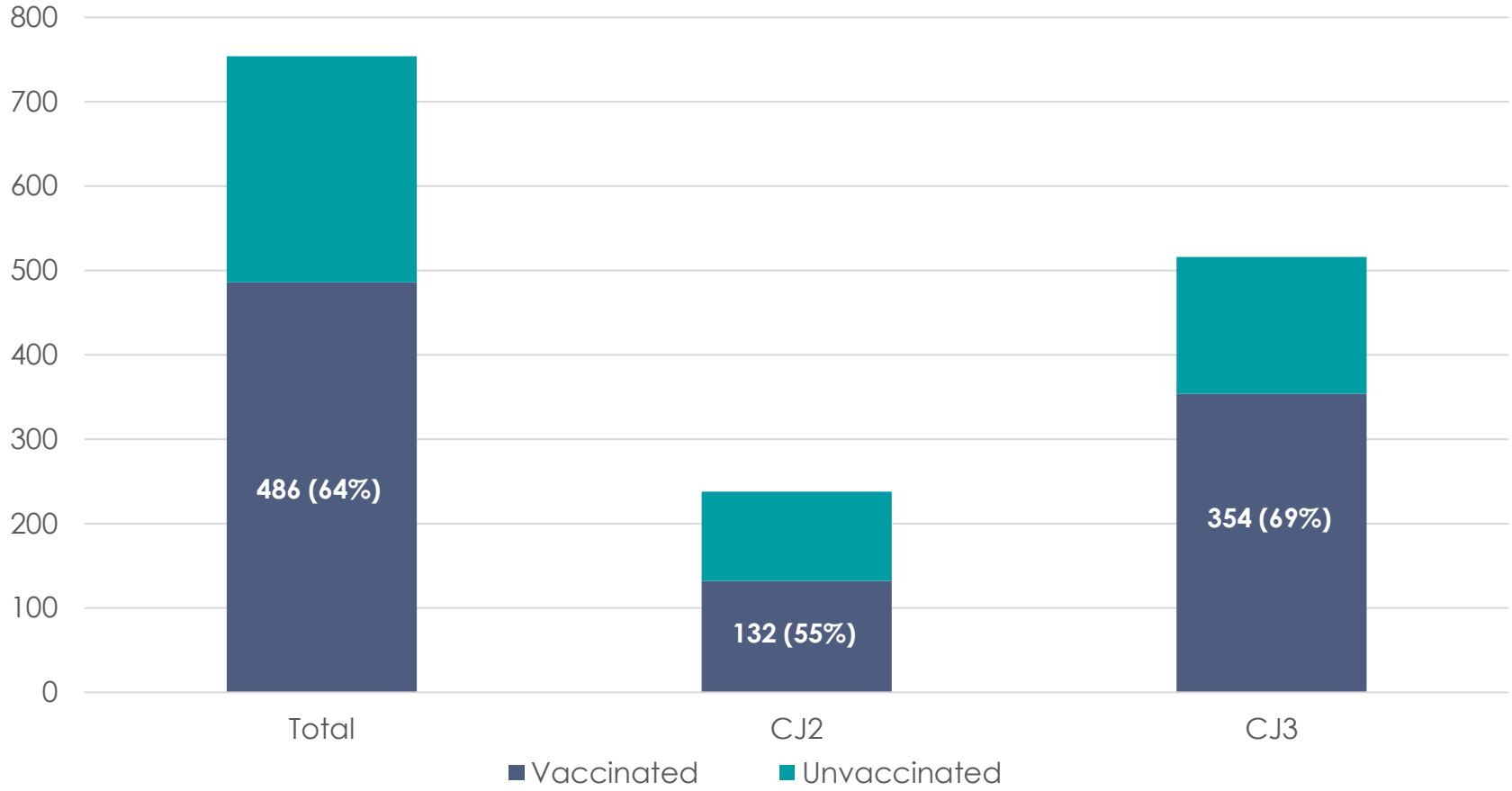


Decreasing Days in Jail

- Decrease arrests
 - SIP, citations
- Rapid charging decisions from DA
- Zero dollar bail
- Mar 2021 CA Supreme Ct Humphreys Ruling - cash bail is not illegal but bail must not exceed ability to pay and alternatives to incarceration must be considered



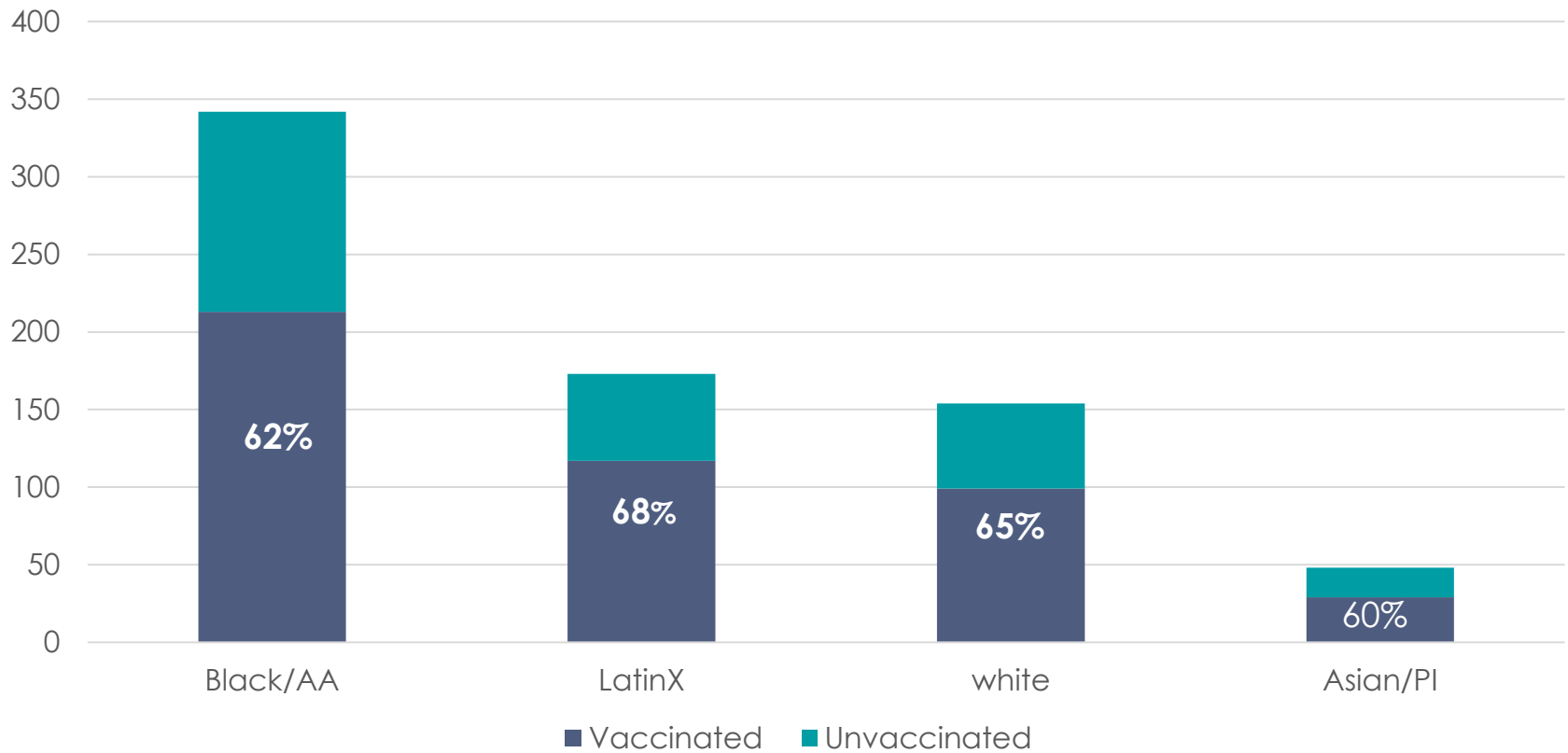
Vaccinated in Jail by Site (N-755 on 7/17/21)





Vax Status by Race/Ethnicity

Population of 755 on 7/17/21





SF County Jail COVID-19 Cases





Challenges/Assets

- **Delta variant**
 - Increased rate of transmission
- **Limited vaccination at jail entry**
 - At most, 10% of people previously vaccinated
- **Reopening the jail to community - programs, legal team, family visits**
- **Required vaccination and testing for staff, outside entities entering jail facility**
- **Reduced population**



Thank You

- CCC, SFHN: Drs. Hammer, Horton, Philip, Colfax, Bobba
- ZSFG Micro lab – Drs. Whitmore and Haller
- Jeff Schmidt at CCC, ZSFG
- CI/CT: Drs. Cohen and Sachdev
- Sheriff Miyamoto, DA Boudin, Dr. Wilson
- Team at Jail Health Services