



# ENVIRONMENTAL HEALTH BRANCH



Patrick Fosdahl, MS, REHS  
Acting Director – Environmental Health Branch  
Department of Public Health  
7/20/2021

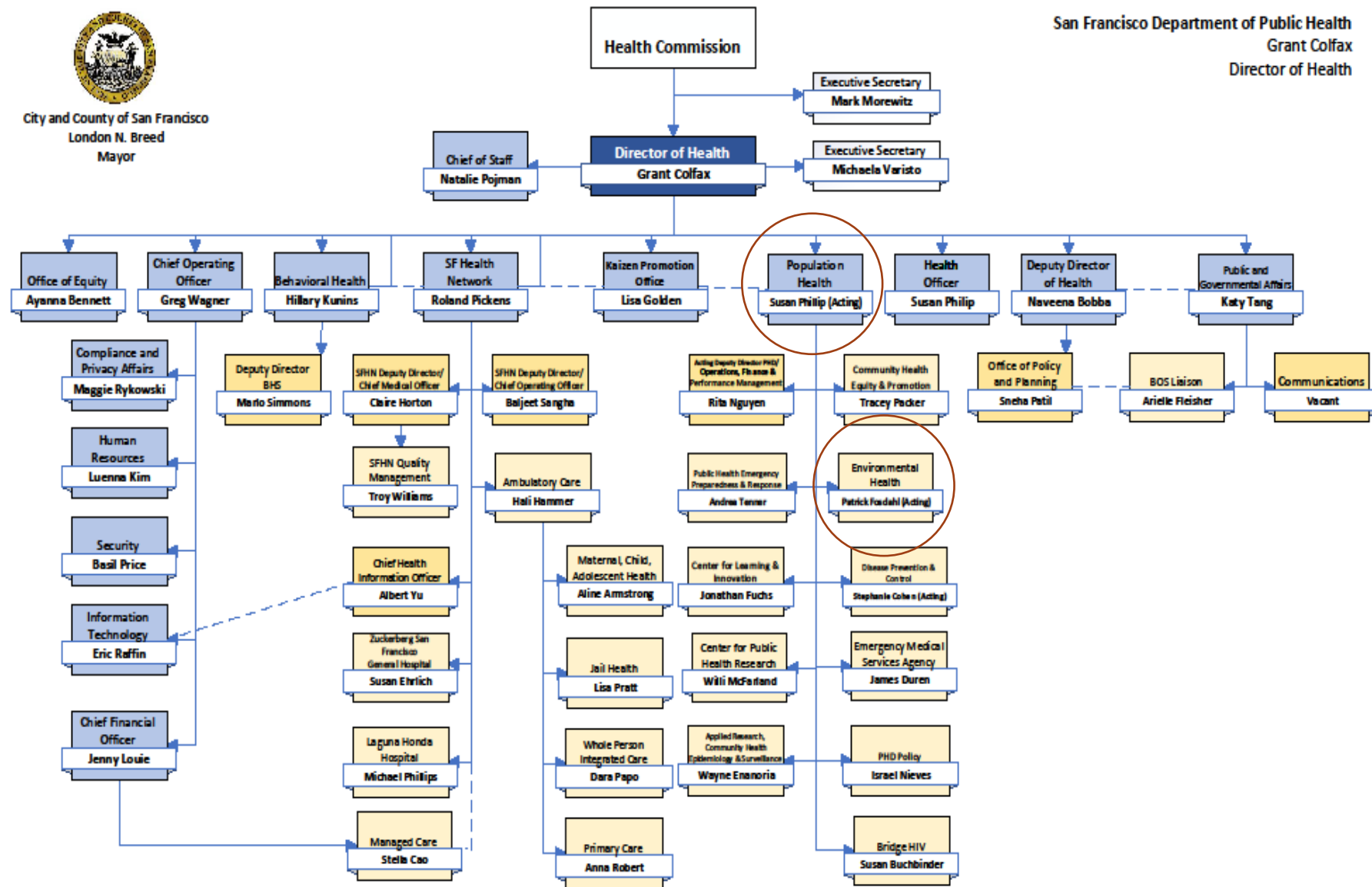


**POPULATION HEALTH DIVISION**  
SAN FRANCISCO DEPARTMENT OF PUBLIC HEALTH



City and County of San Francisco  
London N. Breed  
Mayor

San Francisco Department of Public Health  
Grant Colfax  
Director of Health



Last Updated: 04/28/2021

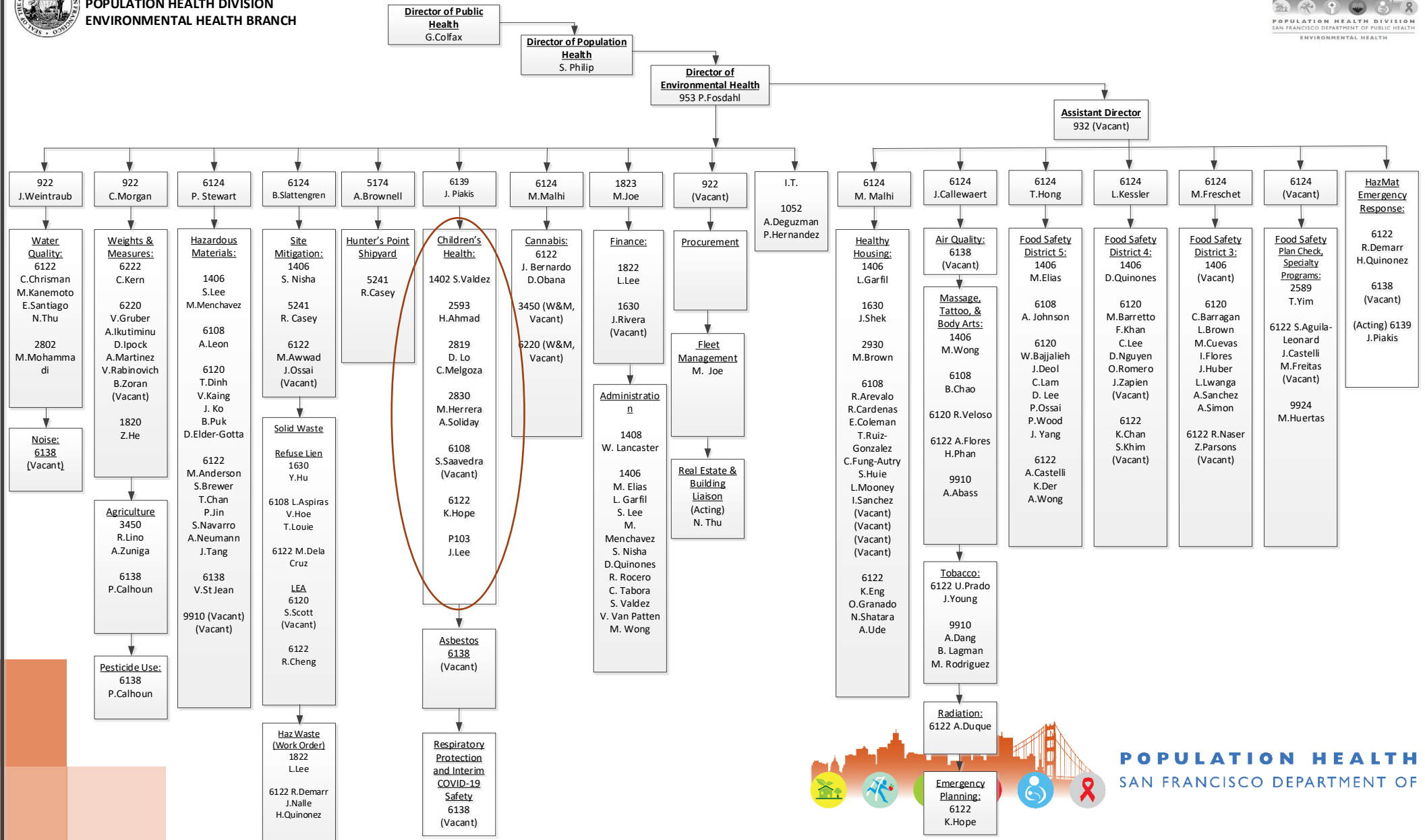


# Environmental Health Branch



**SAN FRANCISCO DEPARTMENT OF PUBLIC HEALTH  
POPULATION HEALTH DIVISION  
ENVIRONMENTAL HEALTH BRANCH**

## ORGANIZATIONAL CHART



**POPULATION HEALTH DIVISION**  
SAN FRANCISCO DEPARTMENT OF PUBLIC HEALTH

# HEALTH COMMISSION OUTLINE

- Environmental Health's COVID Work
- Children's Environmental Health Promotion Program
  - Lead Paint Settlement Program



# Health Order Compliance

- Prevention Tools
  - Outreach Efforts
    - Community Education Response Team (CERT) and DPH
    - Email Blasts and Phone Calls – well over 50K
    - Guidance Documents
    - Staff Visits
    - Webinars
- Enforcement Tools
  - City Attorney's Office and DPH
  - Notice of Violations
  - Notice to Close
  - Fines and Penalties
  - Increased enforcement after-hours and on weekends
  - Other Agency Referrals – ABC, Entertainment, etc.



# Enforcement Steps

- Step #1 - Notice of Violation
  - Violation Noted With 24 Hours To Correct
- Step #2 – Closure Notice Business
  - Up To Two Weeks
- Step #3 – Closure Notice Plus Fines
  - Up to Two Weeks & Up to \$1,000



# Health Order Enforcement Statistics

- DPH has performed over 8,200 compliance inspections
- Cited violations at 2,200 or about 27%
- Most Common Violations
  - Complete and Posted Health and Safety Plan/Social Distancing Protocols
  - Inadequate Social Distancing
  - Lack of Health Screening
  - Inadequate Facial Coverings and PPE
  - Inadequate Cleaning and Sanitizing
- Historically closing about 0 to 3 businesses a week





# CEHP Program

- Jonathan Piakis, MPH, CIH. Program Manager
- Haroon Ahmad, MPH. Program Coordinator
- Karen Yu, MPH, REHS. Sr. Environmental Inspector





# Mission

*We promote healthy home, child care, and school settings so that children can develop to their full potential. We help families by linking them to needed services or code enforcement. We provide information, education and training to community agencies, medical providers, and interested groups in support of these goals.*

*At the heart of our core values is our commitment to ensuring the health and well-being of the whole child. Our diverse partnerships are very valuable in staying true to our core values.*



**POPULATION HEALTH DIVISION**  
SAN FRANCISCO DEPARTMENT OF PUBLIC HEALTH



San Francisco Department of Public Health  
Environmental Health Branch  
**Children's Environmental Health Promotion Program**

**CHILDHOOD LEAD PREVENTION PROGRAM**

LEAD SETTLEMENT PROJECT

ASTHMA HOME VISITING PROGRAM

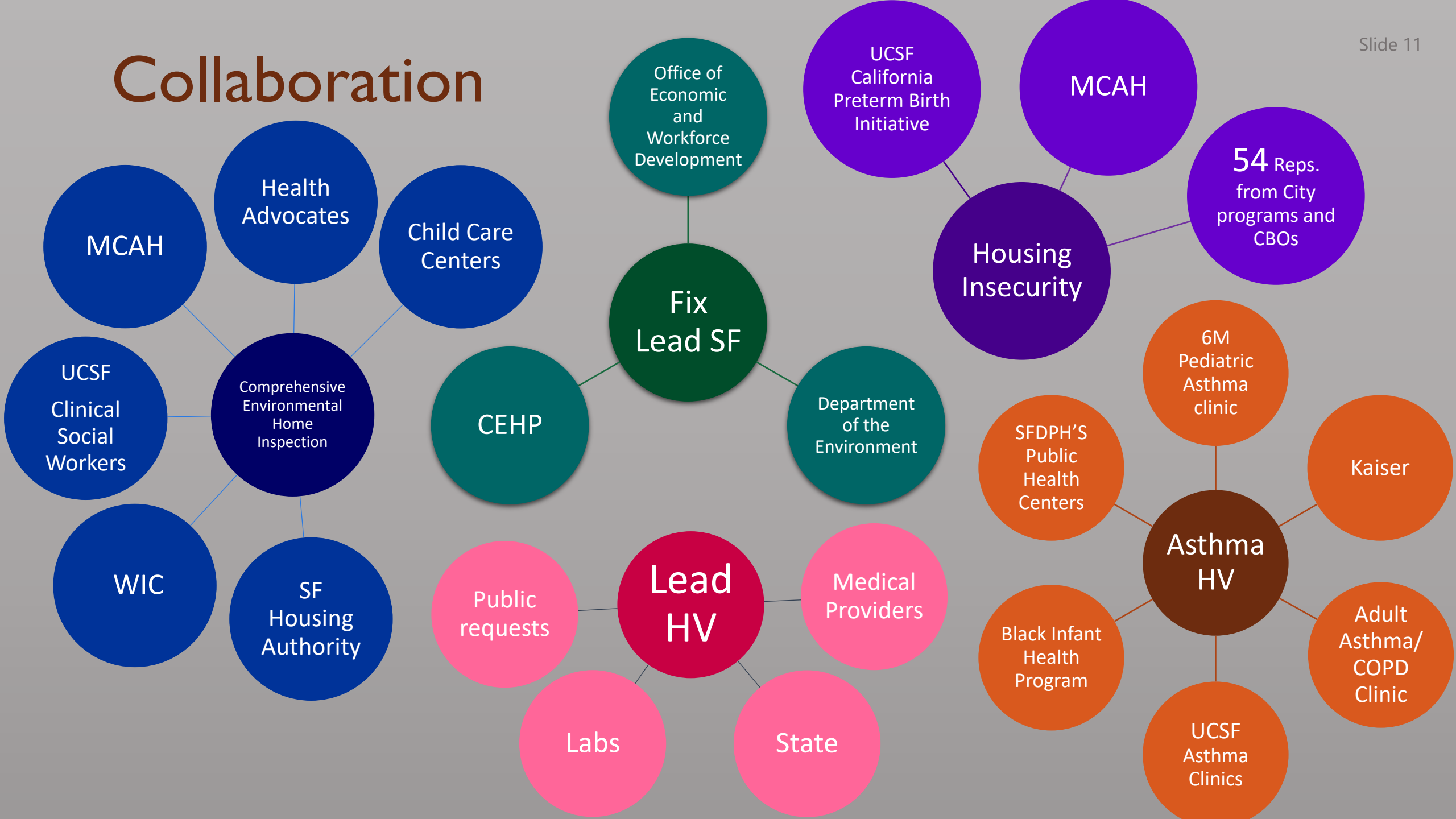
COMPREHENSIVE HOME ENVIRONMENTAL ASSESSMENT SERVICES

FAMILY HOUSING INSECURITY WORK GROUP



**POPULATION HEALTH DIVISION**  
SAN FRANCISCO DEPARTMENT OF PUBLIC HEALTH

# Collaboration

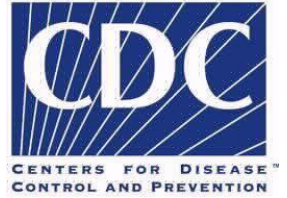


## Key Functions and Day-To-Day Activities

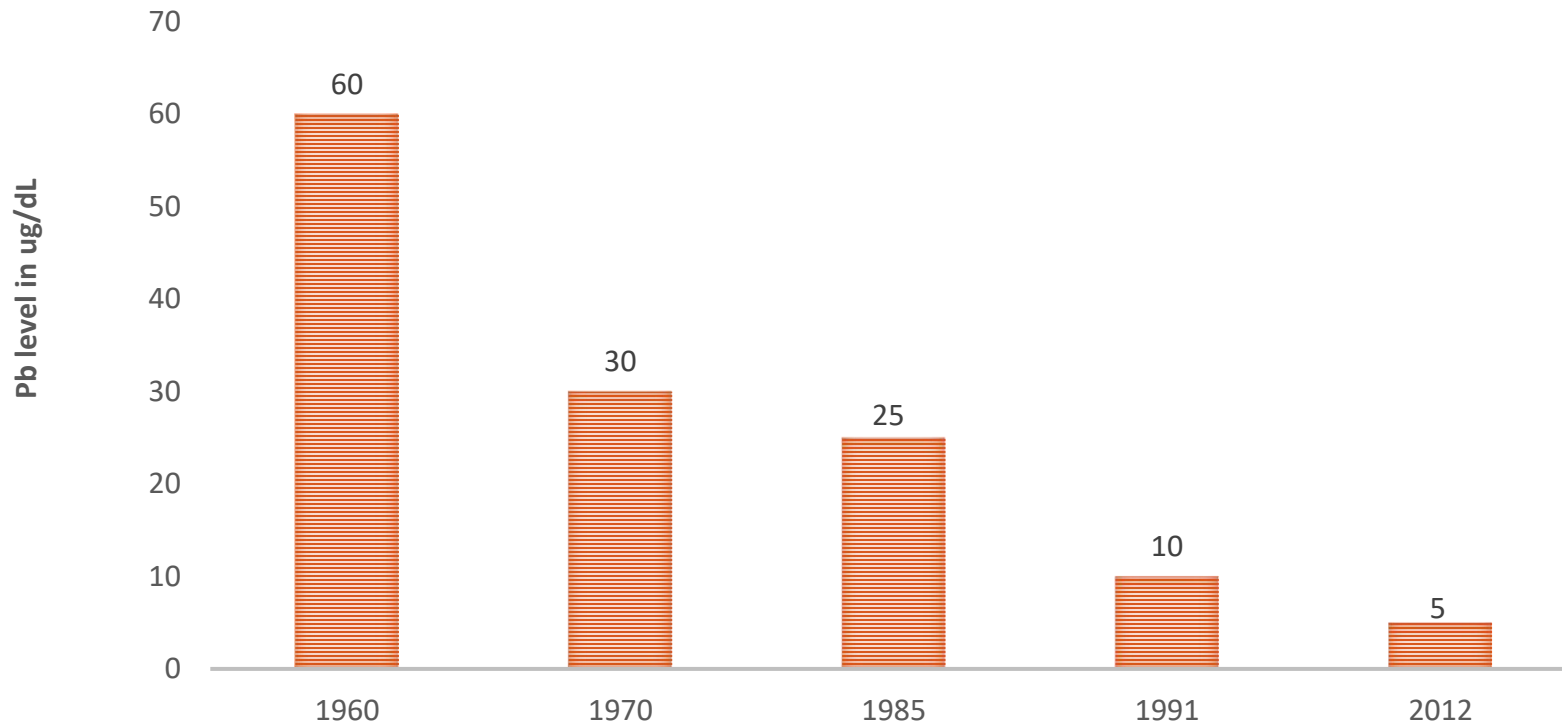
<b>INTAKE</b>	Receive Cases from State, Providers, Laboratories. Requests from Public, Other Agencies
<b>TRIAGE</b>	Route incoming cases and requests for appropriate follow-up
<b>INVESTIGATE</b>	Conduct site visits to obtain information to inform public health response
<b>MANAGE</b>	Ensure appropriate public health follow-up is implemented including medical case management and environmental code enforcement
<b>EDUCATE</b>	Provide information to cases, providers, property owners, public at large
<b>COORDINATE</b>	Collaborate with state and local agencies, health care providers and community
<b>ANALYZE &amp; REPORT</b>	Clean Data. Produce and submit timely reports to State. Answer interagency and public inquiries



# There is no safe level of lead in human body



History of Centers for Disease Control and Prevention (CDC)  
Blood Lead “Levels of Concern” in the US



In 2012 CDC eliminated the term “level of concern”

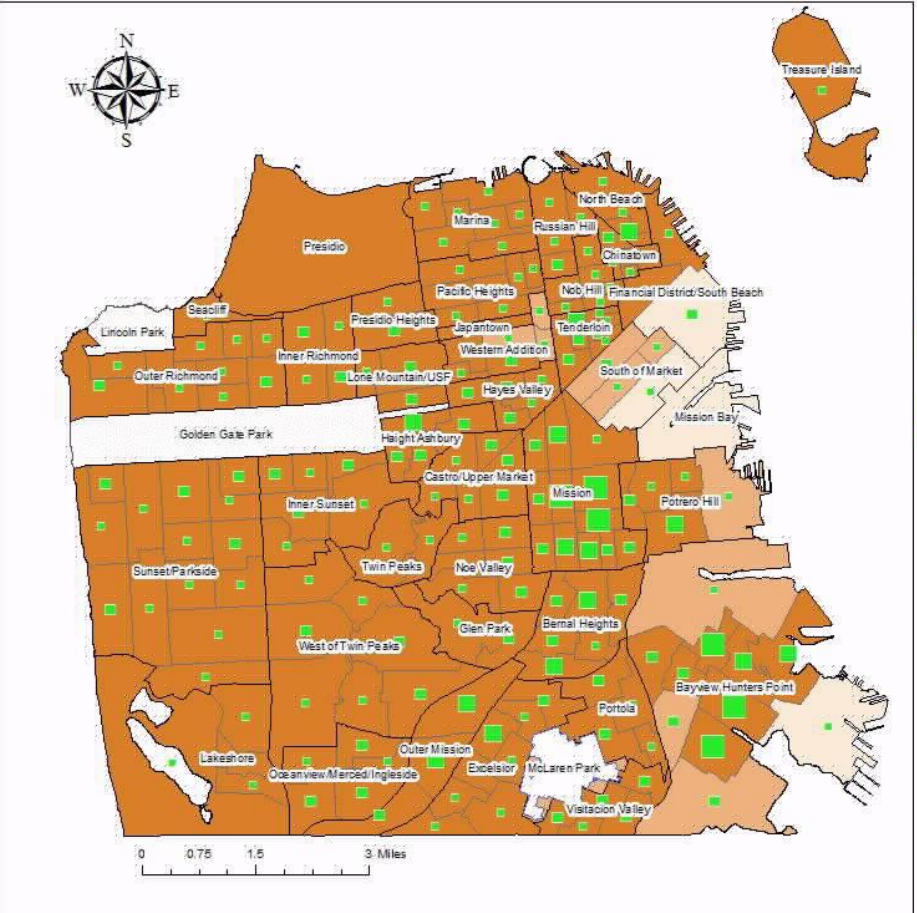
All levels need to be considered



POPULATION HEALTH DIVISION  
SAN FRANCISCO DEPARTMENT OF PUBLIC HEALTH

San Francisco Homes Built 1979 or Before

compared to No. of Children with Detectable Blood Lead Levels ( $\geq 2\mu\text{g}/\text{dL}$ ) reported to DPH, 2013-2016



**% of homes built 1979 or before**  
 Less than 30%  
 30.1% - 80.0%  
 More than 80%

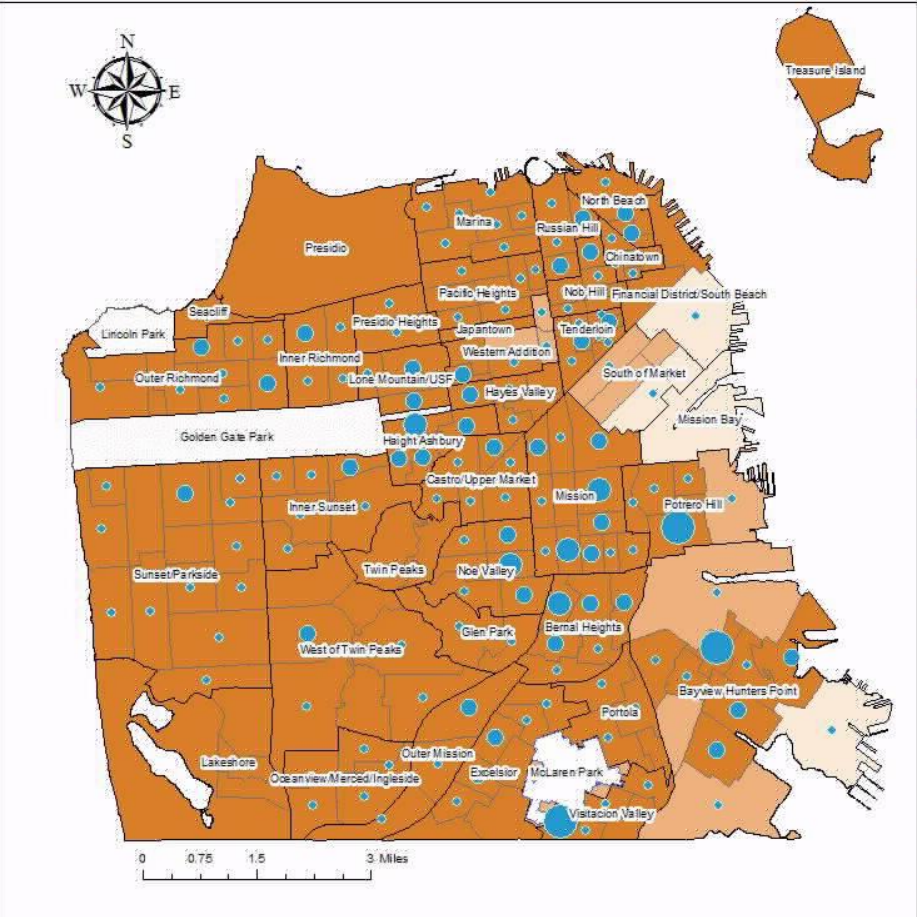
**No. of Children w detectable blood lead levels, N=**  
 1-9  
 10-19  
 20-29  
 30-44

83% of homes in San Francisco were built before 1979, year lead based paint was banned from residential use

2010-2014 American Community Survey (5 Year Estimates)

San Francisco Department of Public Health: Children's Environmental Health Promotion Program, 2017

San Francisco Homes Built 1979 or Before compared to Notice of Violations, 2013-2016



**% of homes built 1979 or before**  
 Less than 30%  
 30.1% - 80.0%  
 More than 80%

**No. of Lead Violations, N=604**  
 1-5  
 6-10  
 11-15  
 16-37

83% of homes in San Francisco were built before 1979, year lead based paint was banned from residential use

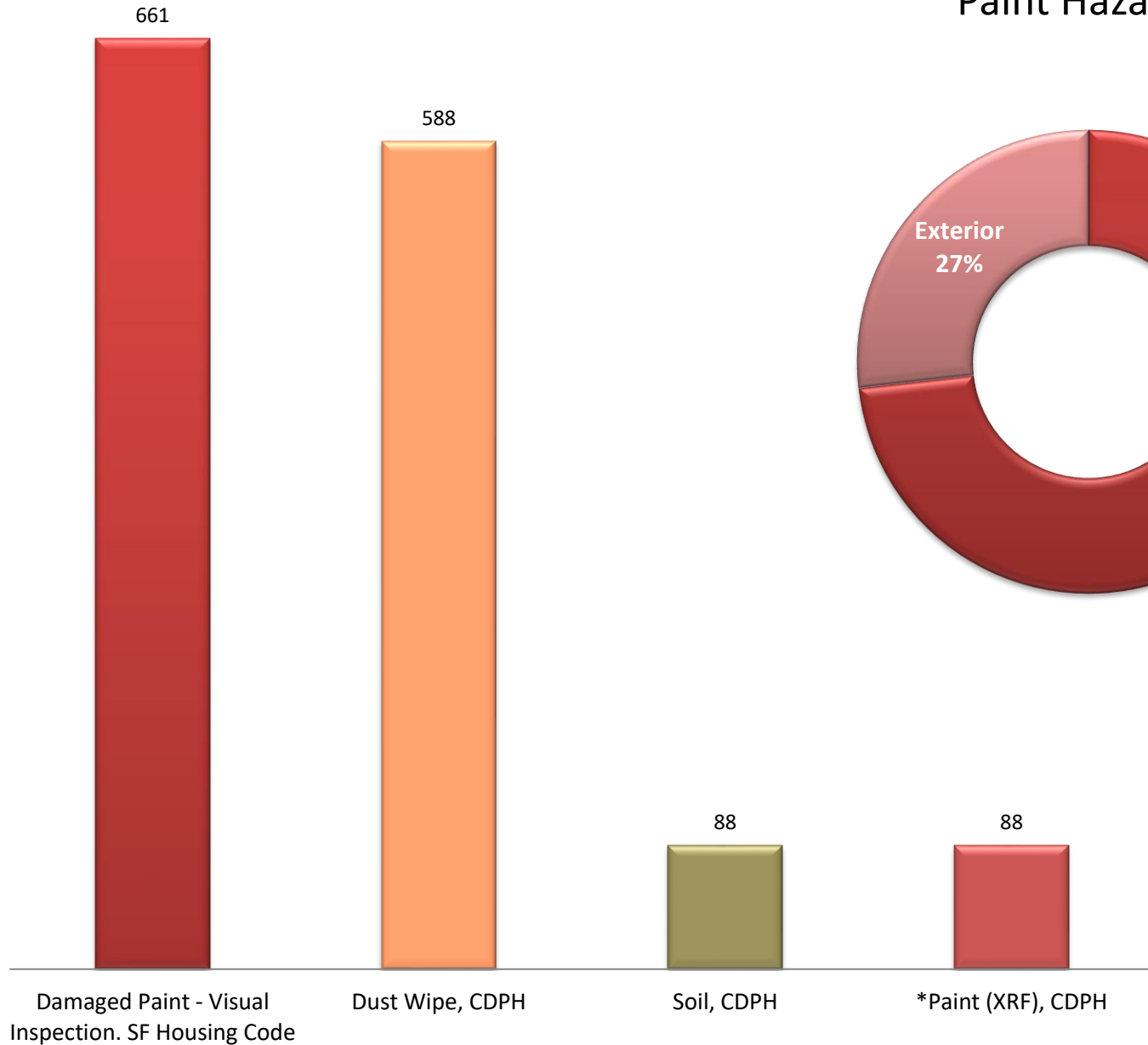
2010-2014 American Community Survey (5 Year Estimates)

San Francisco Department of Public Health: Children's Environmental Health Promotion Program, 2017

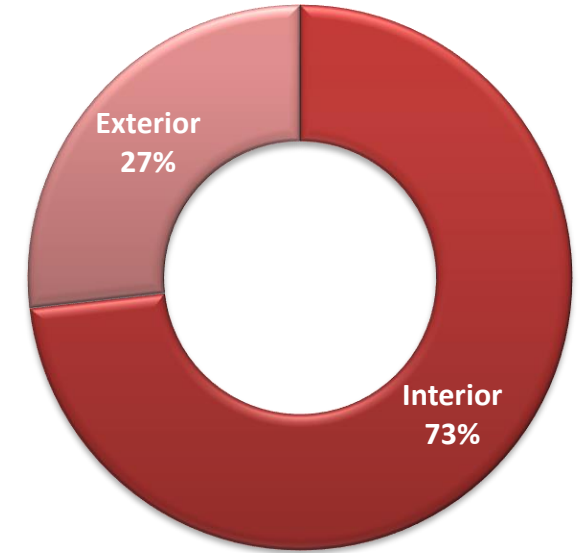


**POPULATION HEALTH DIVISION**  
 SAN FRANCISCO DEPARTMENT OF PUBLIC HEALTH

Environmental Sources  
of Lead classified as  
violations FY2013-2016  
Total Number of  
Violations = 1,425

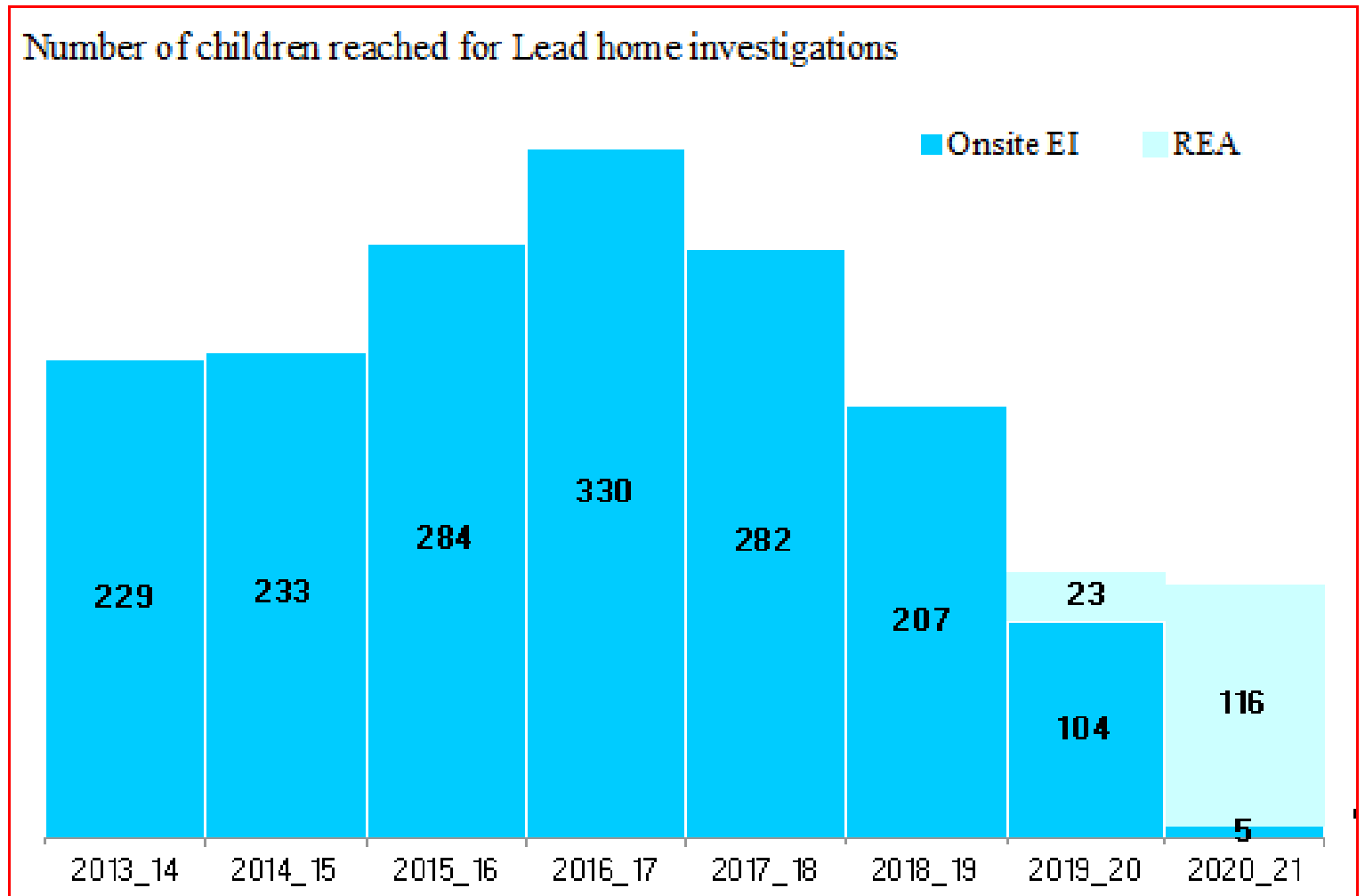


### Paint Hazard Identified



Source: SFCLPP Nuisance Database

Services continued during COVID-19





# Lead Settlement Project

- Fix Lead SF
- 2020-2026 \$21 million
- Background
  - 2000—Santa Clara County on behalf of the People of CA vs. 3 former lead manufacturing companies
  - 2014—Ruled liable
  - 2017-2018—Appeals, upheld decision
  - \$35 million divided based on number of homes with lead paint



# Fix lead SF Project Team

- Multidisciplinary Collaboration
- City Departments Lead
  - DPH—Development, Outreach
  - SFE—Development, Abatement
  - OEWD—Workforce Development



# Fix lead SF Project Plan

- Proactive
  - with or without poisoned child, current lead hazards, children present
- Prioritizing:
  - Homes built prior to 1950
  - Units/homes with children under the age of 6 and expecting mothers
  - Low-income families
  - Section 8 housing providers
  - Zip codes with historically higher number of lead-poisoned children, beginning with 94110 (Mission, Bernal), 94112 (Outer Mission, Excelsior), and 94124 (Bayview)
  - Abatement vs Interim Controls

