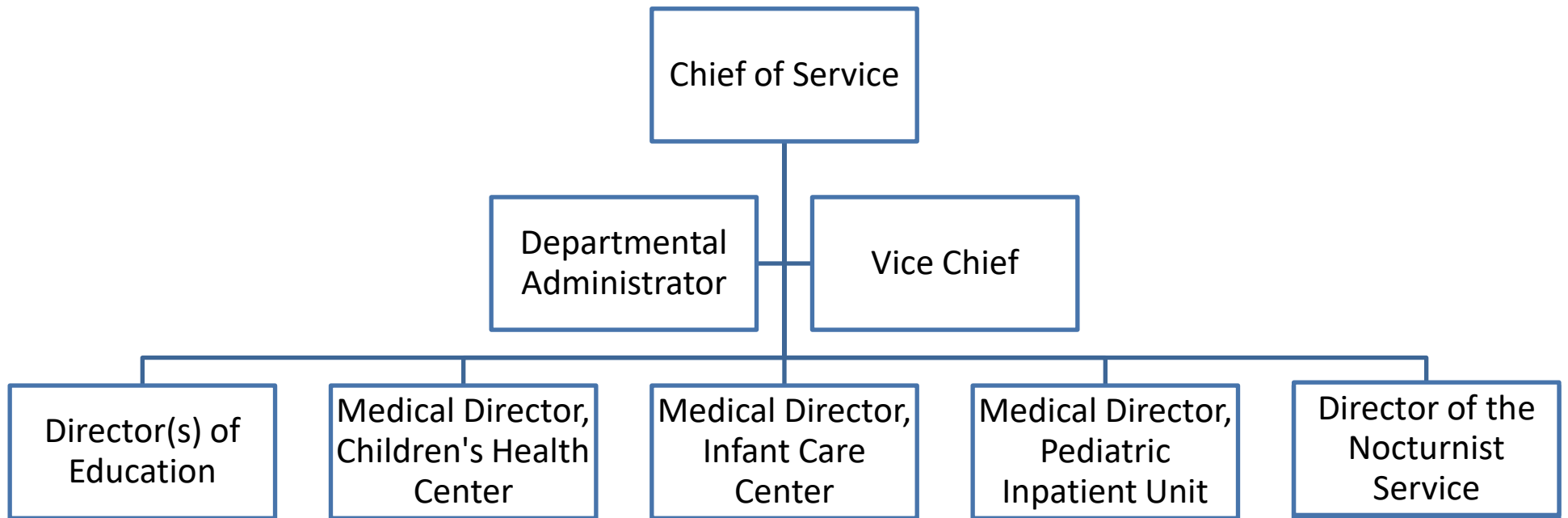


Appendix A

Organizational structure

Pediatric Department at the ZSFG



Chief of Service
Elena Fuentes-Afflick, MD, MPH

Departmental
Administrator
Emily Leang, MBA

Vice Chief
Shonul Jain, MD

Director(s) of Education
Taylor Clark, MD
Ellen Laves, MD

Medical Director,
Children's Health Center
Shonul Jain, MD

Medical Director, Infant
Care Center
Cindy Tran, MD

Medical Director,
Pediatric Inpatient Unit
Mabel Chan, MD

Director of the
Nocturnist Service
Holly Martin, MD